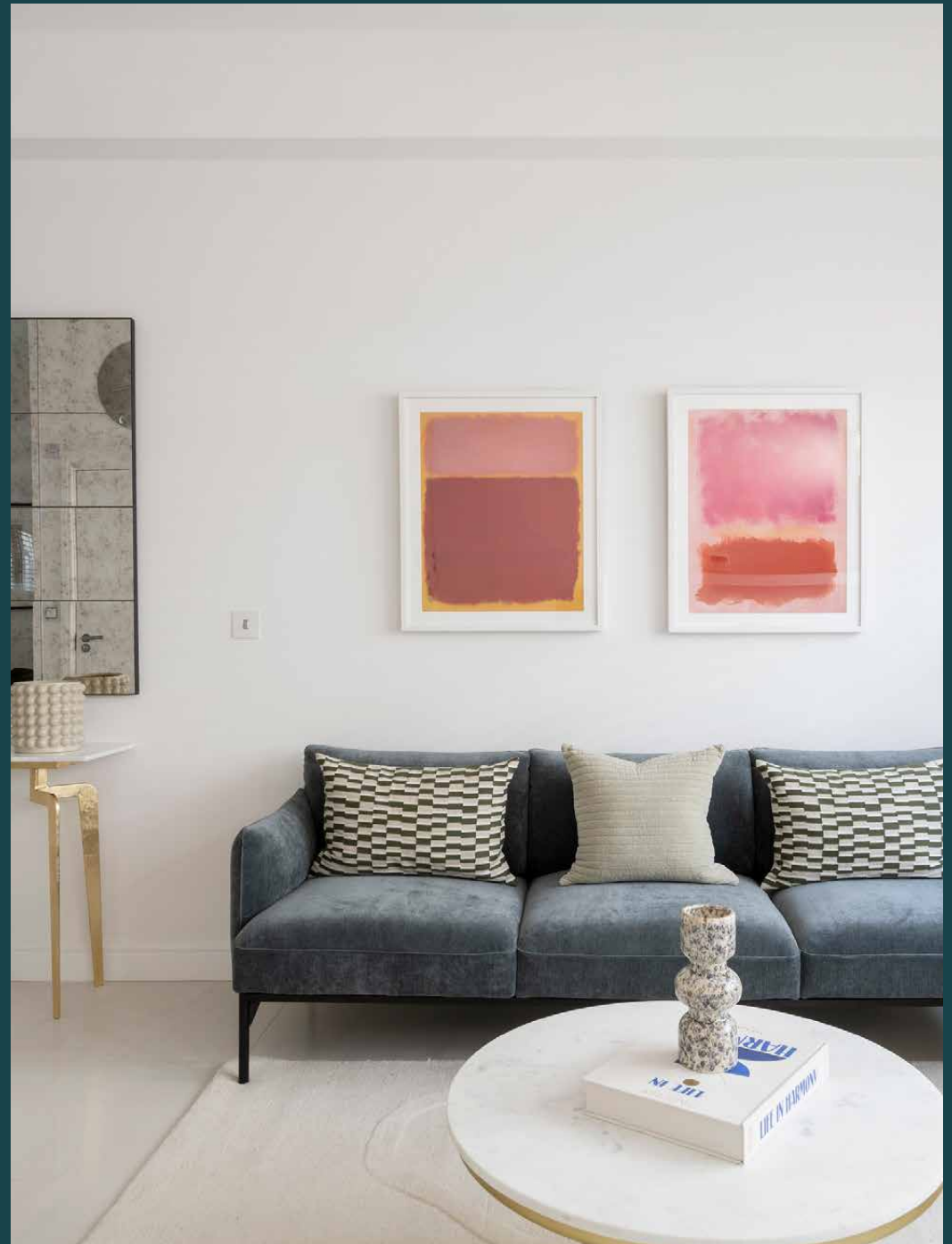

Queens Mews

Notting Hill W2

4 Bedrooms, 3 Bathrooms
For 8 guests





A peaceful mews setting, plus proximity to the city. This four-bedroom home presents an exceptional sense of calm.

A contemporary take on the traditional mews, this transformed home captives from the onset. Nestled along a picturesque, cobbled lane just a stroll from Hyde Park, its brick façade and glossy green door serve an inviting first impression.

Inside, a contemporary canvas unfurls. Approach to design is pared-back throughout, lending an airy feel to the open-plan living area. A pristine backdrop to drift between lounging and dining, this space is a study in minimalist elegance. An L-shaped kitchen to the left makes culinary affairs effortless, coupling sleek surfaces with integrated appliances, and an American-style fridge discreetly housed in the pantry. Uniting form and function, heated stone tiles connect the dining area.

Across from the dining area lies the reception space, where comfort and creative touches coalesce. White walls serve as a pristine canvas for Mark Rothko artworks, while a sumptuous navy sofa beckons you to sink in and slow down.



Surrounded by plush olive seats, an oval glass table is an indulgent spot to gather for up to eight guests.



“

A pristine setting to drift between lounging and dining, this space is a study in minimalist elegance.



The principal suite crowns the top floor, a private haven illuminated with an entire wall of windows.

A substantial dressing area brings an ease to mornings, while the en suite bathroom features a dramatic backdrop of slate-toned tiles, a walk-in shower and a luxurious bathtub. Situated opposite, a versatile, sky-lit study is a versatile nook to retreat to when work calls, plus hosts a sofa bed for occasional guests. The lower floor reveals three serene bedrooms, each designed as a sanctuary of rest. One enjoys its own en suite shower room, while the remaining two share a thoughtfully appointed family bathroom.

















LOCATION

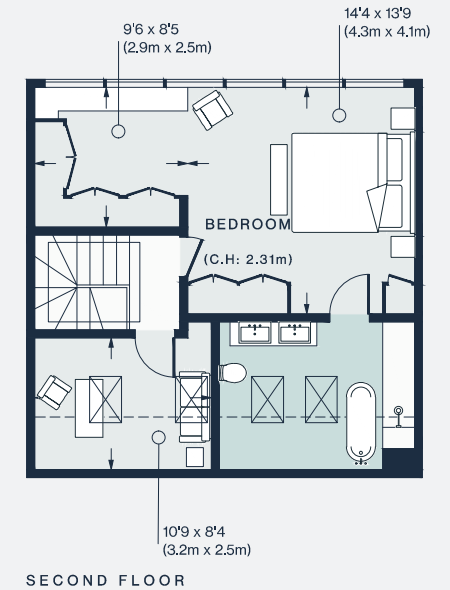
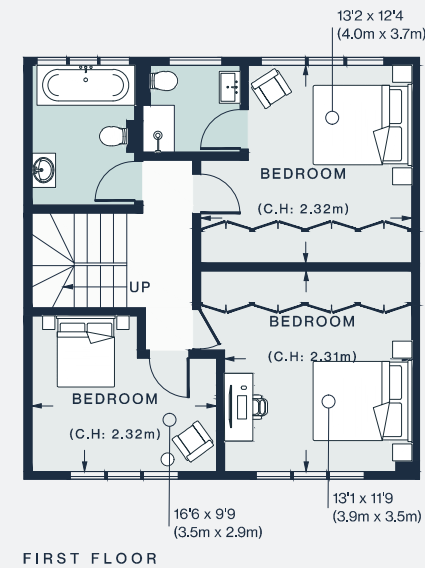
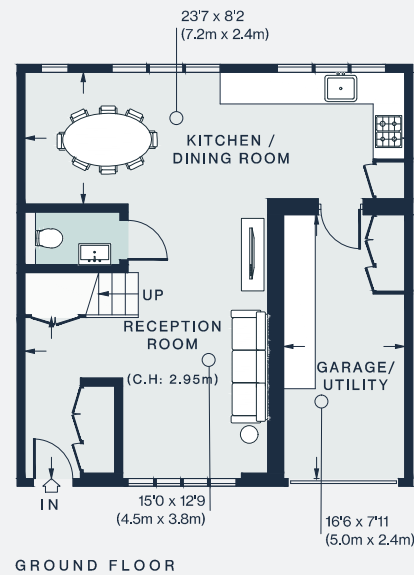
Located in a quiet cul-de-sac of Mews houses, this tranquil setting offers a breather from bustling city life.

Take in the Albert Memorial in Kensington Gardens, stroll around the lake in Hyde Park or – if you're feeling brave – dive into the Serpentine Lido. Recharged and ready to go, the best of Bayswater and Notting Hill is within walking distance. Ease into the day with a flat white at Guillam Coffee House, a workout at Psycle, or brunch at Farm Girl. Then continue along Portobello Road for a spot of vintage shopping. Come evening, head to Gold for a lively dinner.



PROPERTY HIGHLIGHTS

- Open-plan kitchen and dining room
- Reception room
- Principal bedroom suite with dressing area
- Guest bedroom suite
- Two further bedrooms
- Family bathroom
- Versatile study
- Utility room
- Cloakroom
- Nest temperature control throughout



Approx. Gross Internal Area = 1,754 sq ft / 163 sq m

Floor plans are for illustrative purposes only and not to scale. Compliant with RICS code of measuring practice.



Please don't hesitate to get in touch if you have any questions or require any further information.

hello@domusstay.com

+44 (0)20 8168 8880

Domus Stay provides the perfect combination of property, place and personal service for the world's most remarkable people. If you have any questions, or if we can help in any way, please contact us on the above number. Be it about a property you have, a property you want, dates to check or any special requirements you may need, we'd love a chat.

