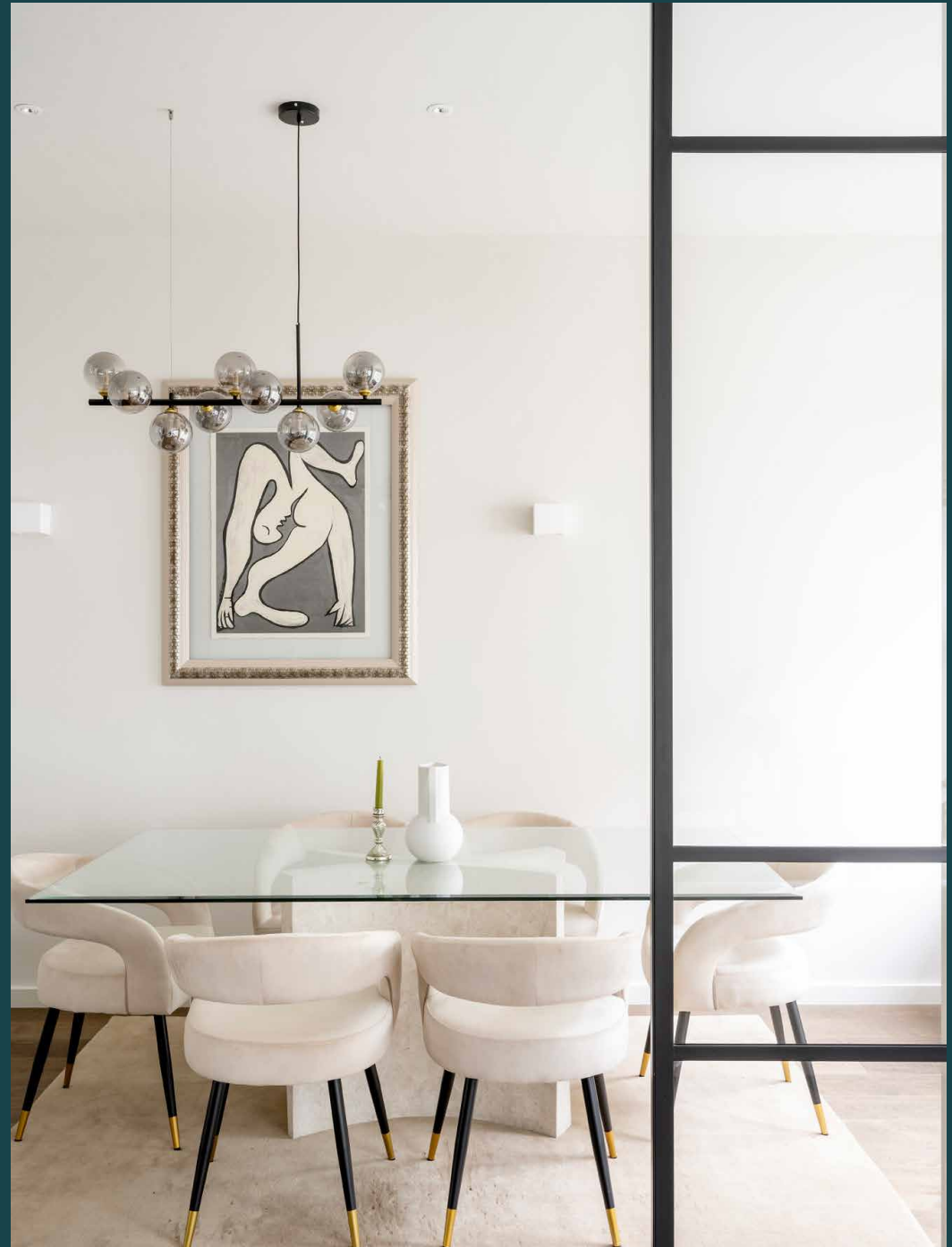

Princes Gate Mews

South Kensington SW7

2 Bedrooms, 2 Bathrooms
For 4 guests





Moments from South Kensington's museum heartland, a two-bedroom mews home that's a gateway to world-class culture.

On a quiet, cobbled cul-de-sac off Exhibition Road, the best of the capital's galleries and museums are within easy walking distance here. Tucked just far enough away from the action, this is a peaceful setting amid vibrant surroundings.

From the outside, Princes Gate Mews is all tradition and charm. Inside, a contemporary reimagining by architecture and design practice Studio Ulanowski has created a calming, considered home arranged over three floors.

Bright and uplifting, the open-plan kitchen, living and dining room sets the tone for the rest of the house. White walls and wooden floors provide a blank canvas for design touches – from sculptural lighting to a striking feature fireplace. Eyes are immediately drawn to the standout kitchen. Finished in Italian marble, its ergonomic layout and high-spec Miele and Siemens appliances will suit the most sociable and serious of cooks. For hosting, a more formal dining space features a six-seater glass-topped table. Or kick back in the tub armchairs and large L-shaped sofa after a long day of sightseeing; numerous sash windows bathe the room in natural light.

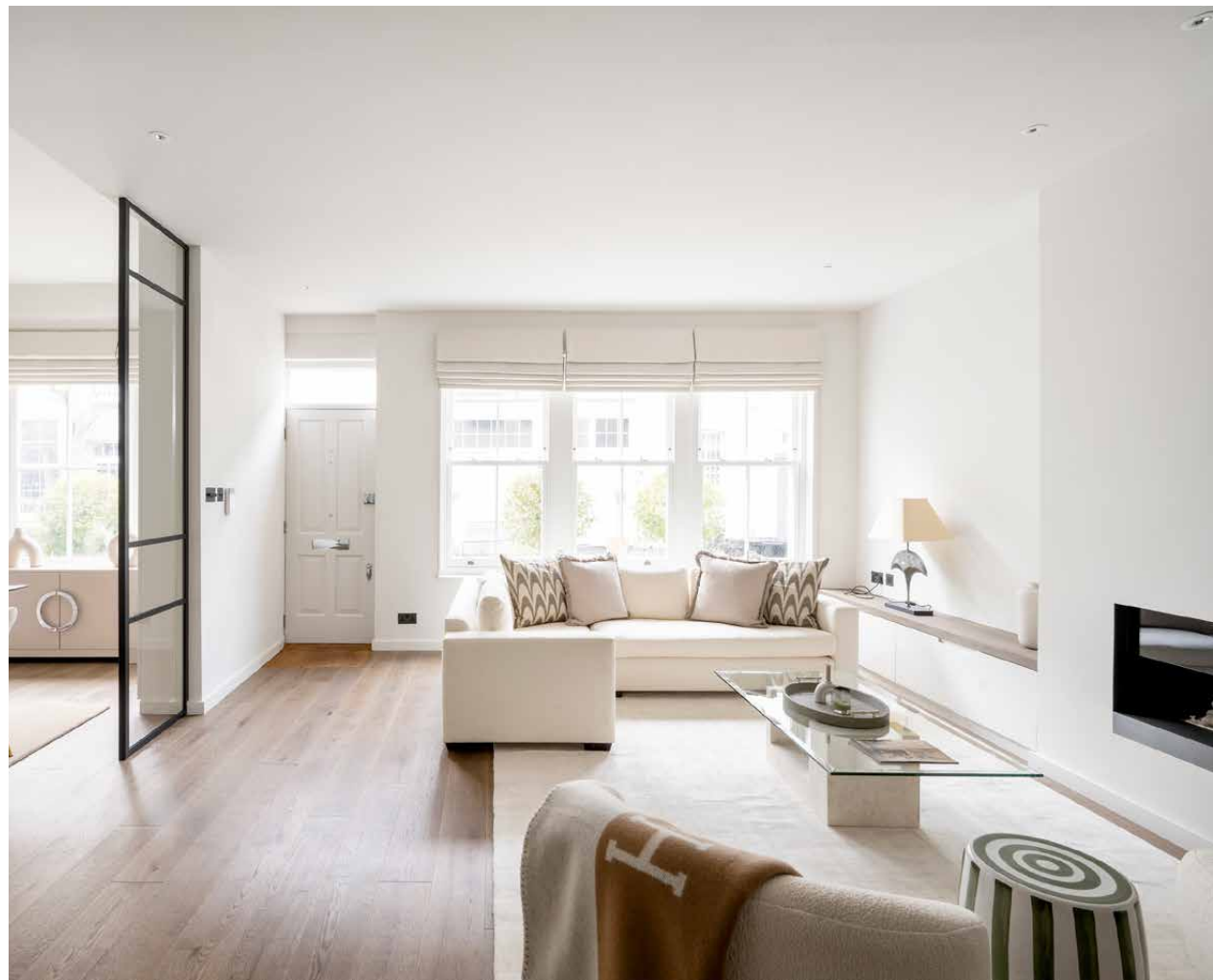


White walls and wooden floors provide a blank canvas for design touches – from sculptural lighting to a striking feature fireplace.



“

Shut the door on lively South Kensington at this quiet mews. Recharge in peaceful surroundings, ready to rejoin the action.

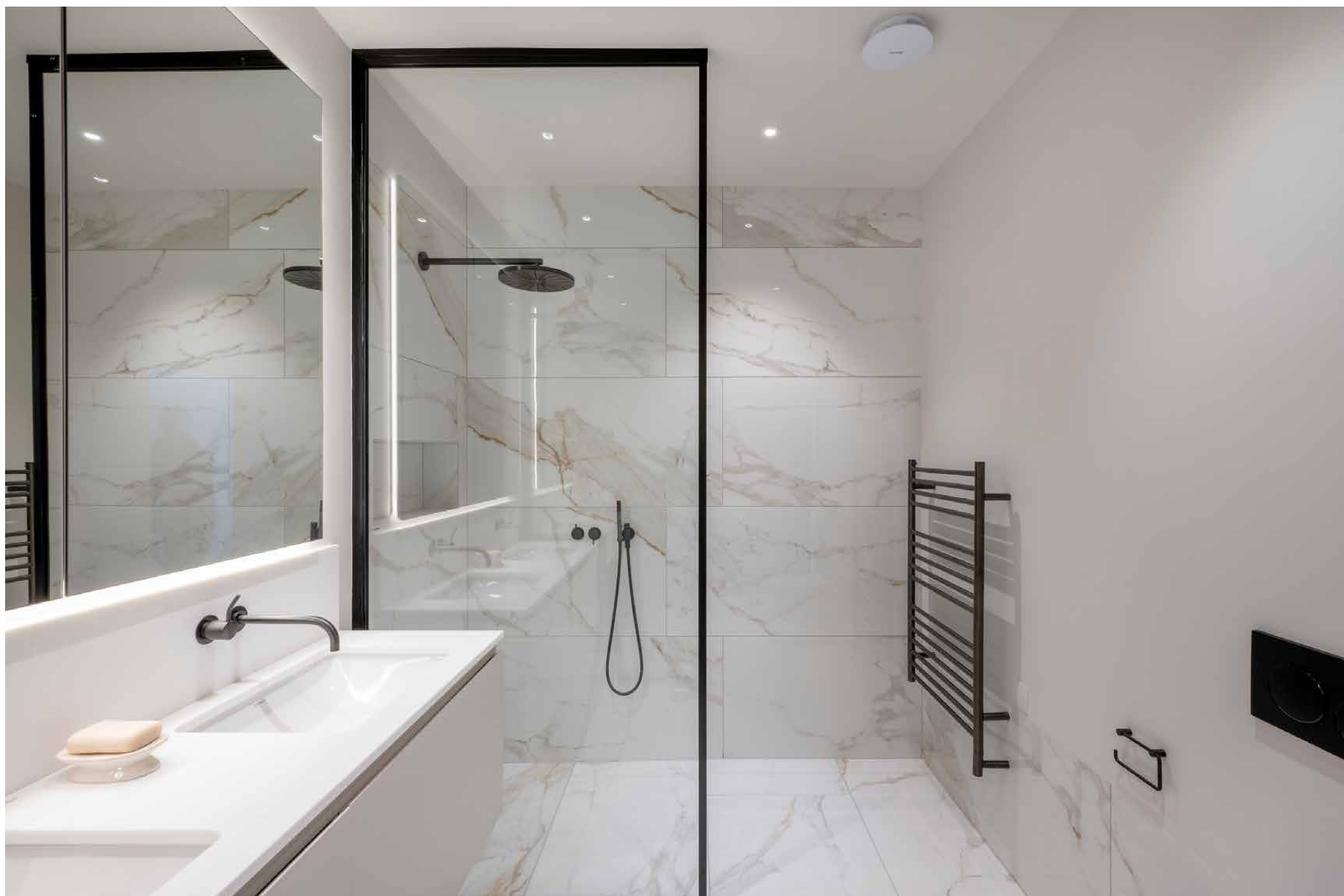




Both bedrooms are found on the first floor, each featuring bespoke joinery. The elevated principal suite offers a touch of luxury, with a walk-in wardrobe and an en suite shower room clad in stone and marble. An equally inviting guest bedroom is also served by its own shower room.













Capitalising on its second-floor vantage point, find a cosy TV den at the top of the home. With its contemporary fireplace and French doors out to a sizeable terrace, it's a space for all seasons. Mix a drink at the bar area – complete with wine fridge – and turn up the Devialet sound system. The perfect way to unwind after catching up on emails in the adjoining study.





LOCATION

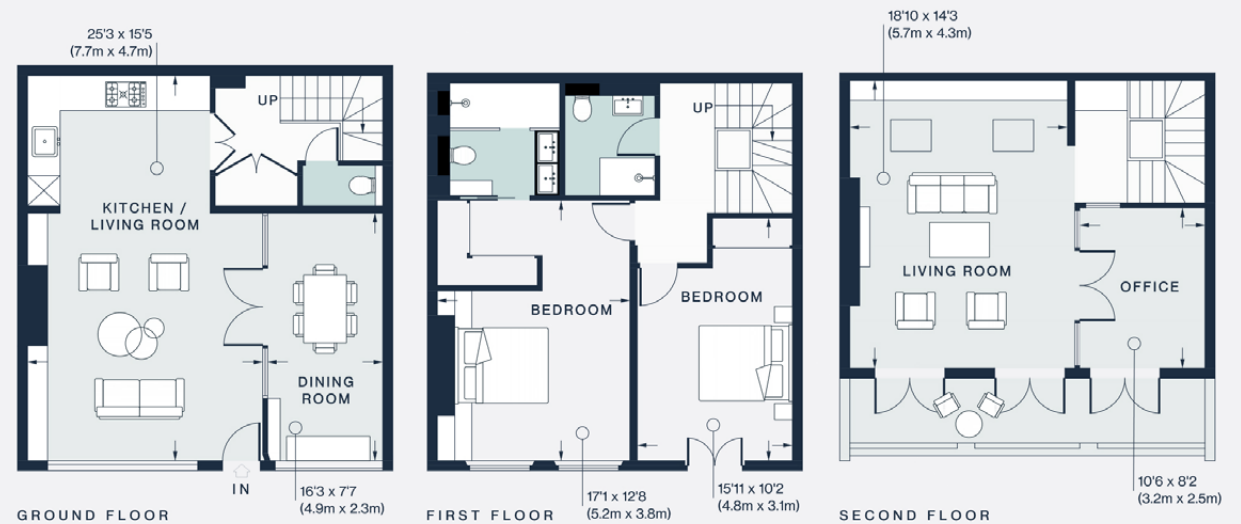
With its array of cultural institutions, sightseeing takes centre stage in this South Kensington enclave.

From The Science Museum to The Victoria & Albert Museum, tick off the hotspots here, or leave the guidebook at home – there's plenty to occupy your days either way. Wander down Exhibition Road to get your fill of culture. Or switch off with a stroll around sprawling Hyde Park – just two minutes' walk from your front door. For shopping, head to Knightsbridge or the King's Road. Dining options are plentiful; choose between local favourites Wild Tavern or Le Petit Beefbar. For special occasions, book a table at Zuma for contemporary Japanese cuisine, or catch a performance at The Royal Albert Hall.



PROPERTY HIGHLIGHTS

- Open-plan kitchen, reception and dining room
- Sought-after location, close to museums and galleries
- Second living room and study
- Principal bedroom suite with bespoke carpentry
- Guest bedroom
- Contemporary shower room
- Separate cloakroom
- Terrace
- Royal Borough of Kensington & Chelsea



Approx. Gross Internal Area = 1607 sq ft / 149.3 sq m

Floor plans are for illustrative purposes only and not to scale. Compliant with RICS code of measuring practice.
Prepared for Domus Stay. Copyright © All Rights Reserved.



Please don't hesitate to get in touch if you have any questions or require any further information.

hello@domusstay.com

+44 (0)20 8168 8880

Domus Stay provides the perfect combination of property, place and personal service for the world's most remarkable people. If you have any questions, or if we can help in any way, please contact us on the above number. Be it about a property you have, a property you want, dates to check or any special requirements you may need, we'd love a chat.

