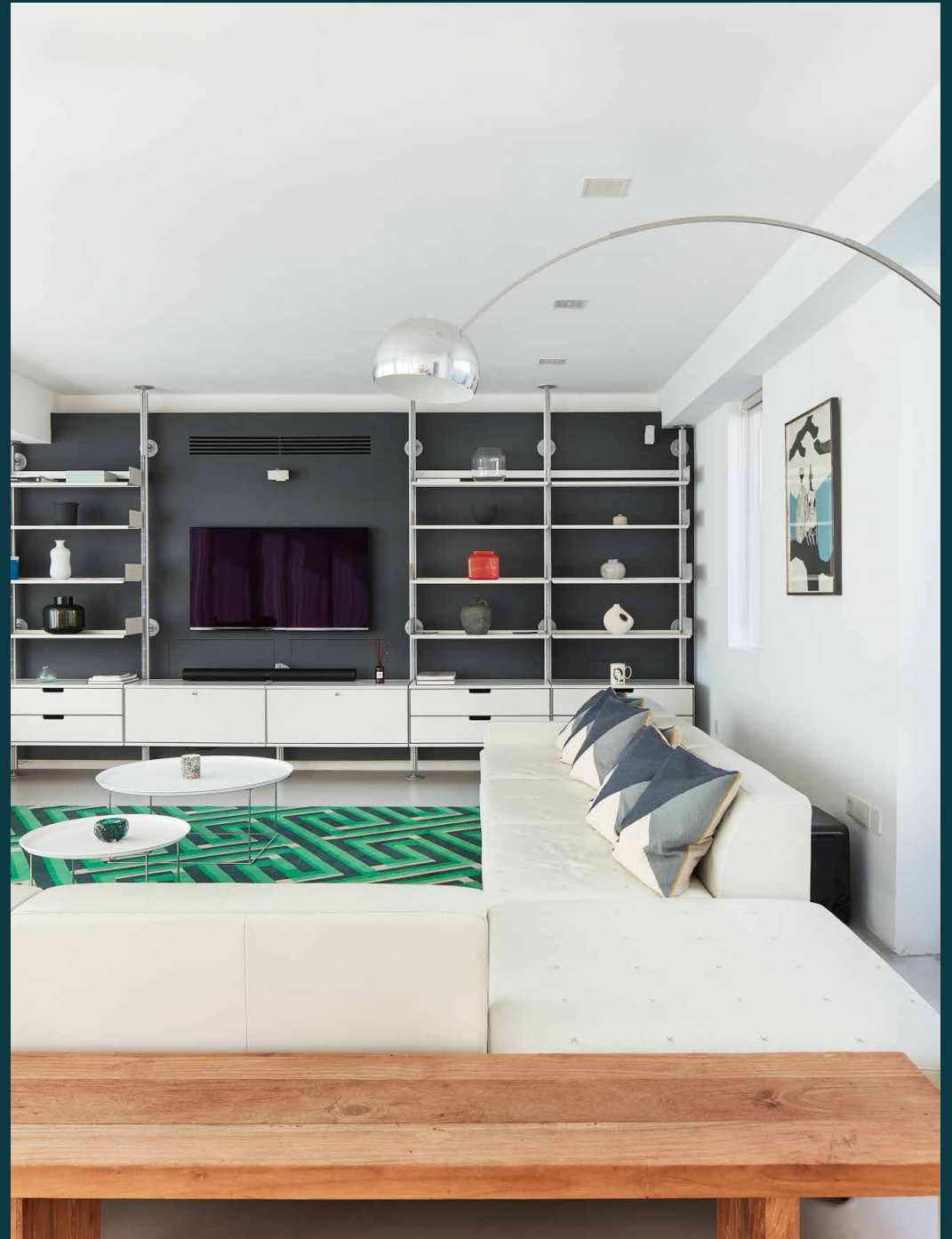

Notting Hill Gate

Notting Hill W11

4 Bedrooms, 4 Bathrooms
For 8 guests





Swathes of light, gallery-like proportions and a sweeping roof terrace. This four-bedroom triplex raises the bar higher with every storey.

Feel the energetic bustle of one of West London's main thoroughfares fade away as you shut the front door here. In place of the electric activity of Notting Hill Gate, cubist design by ng architecture toes the line between calming and captivating.

Minimalist interiors lend attention to modern details, and a rooftop terrace offers sweeping city views. Minimalist interiors that lend attention to modern details. A rooftop terrace with sweeping city views.

Reaping the benefits of its third-floor positioning, the open-plan kitchen and reception room is a vast and light-filled space. There's gallery-like precision to the clean-line columns, swathes of floor-to-ceiling glazing and considered zoning. At one end, the chequered wooden island brings warmth to the whitewashed room, offering an expansive surface for devoted culinary practice. At the other, an ode to the mid-century is realised with white tuxedo sofas, arranged with conversation in mind. Entertaining is streamlined here, with a dining table set at the heart of the space. For peace-and-quiet working, there's a study nestled on this floor.



“

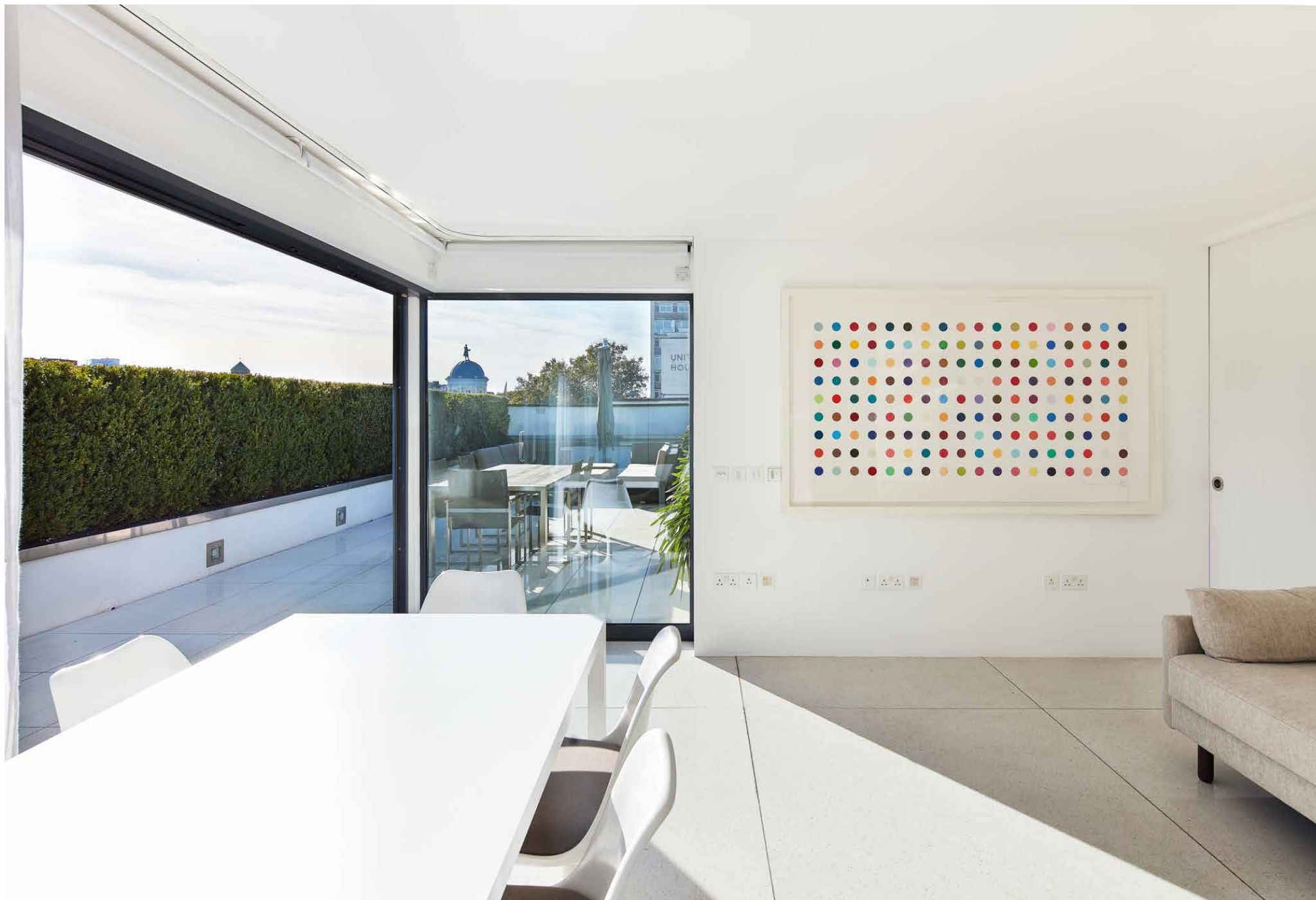
The home is bright and voluminous with light cascading through full-length windows, glass walls and ceilings.



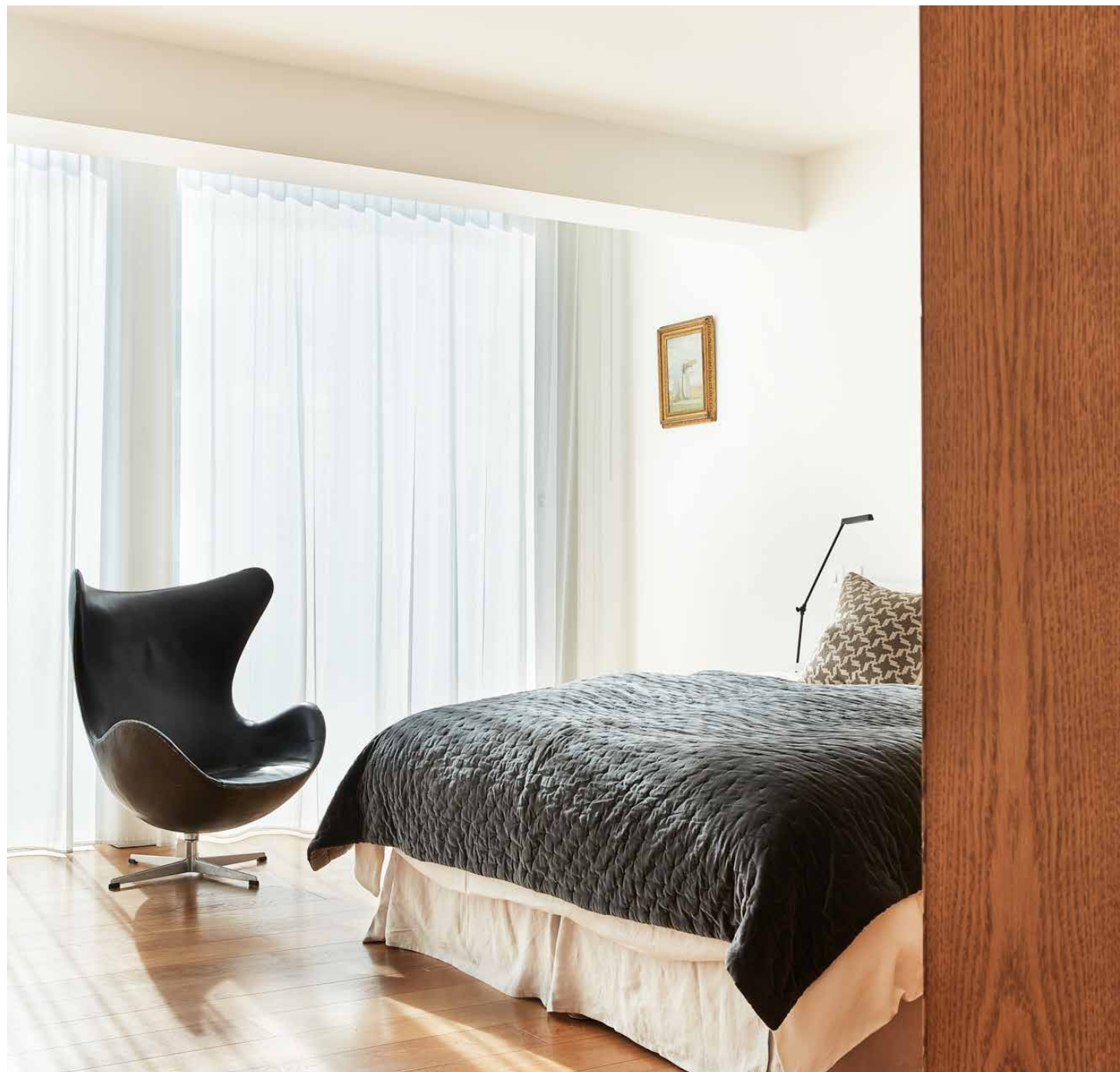


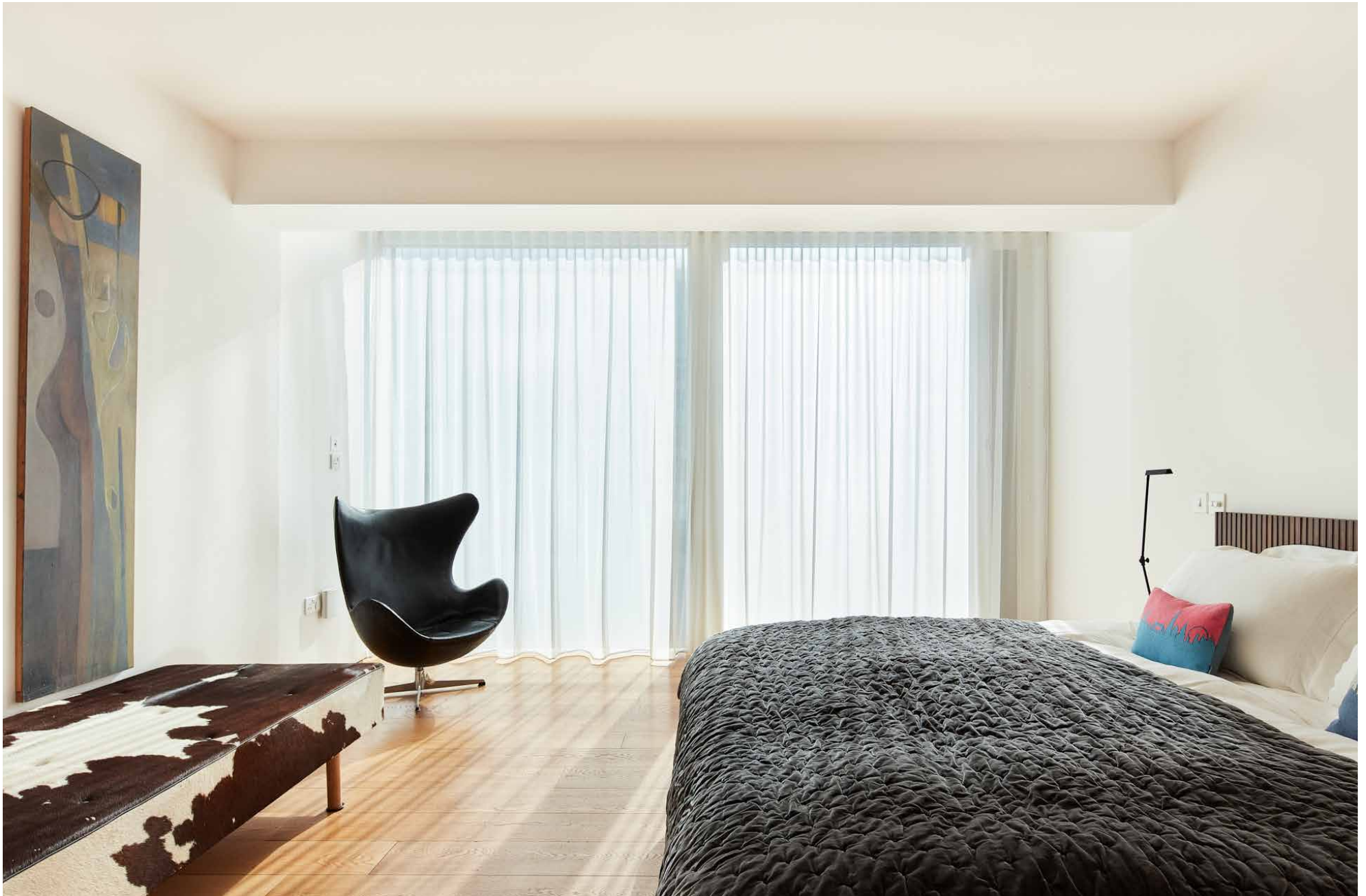






Three further bedrooms epitomise beauty in simplicity. Set on the second floor, the master suite uplifts and it soothes. Next door, there's spa-like serenity to the free-standing tub in its ensuite bathroom. Serving the two additional bedrooms, a family bathroom is finished in striking greyscale marble. Notting Hill Gate offers sanctitude in the city.













As you ascend to the fourth floor, note the urban flair afforded through concrete stairs and stainless-steel balustrades – a precursor to the rooftop views. A sunlit games and television room leads out to the terrace, boasting commanding views across the city skyline. The home's minimalist interior palette is effortlessly translated outside, with pale marble tiles and contemporary seating. After a day along Portobello Road, invite friends and family over for evening drinks and a barbecue. Manicured greenery creates a backdrop of verdant privacy, whilst the electric activity of Notting Hill Gate plays out beyond.





LOCATION

Notting Hill Gate is the nucleus that connects the vibrant locales of Holland Park, Kensington and Notting Hill together.

Stroll along Holland Park Avenue to pick up a new page-turner from Daunt Books, followed by a pastry at Buns From Home. Or head to the tranquil lawns of Hyde Park; grab your swimming costume for a dip in the Serpentine Lido. Notorious for its vintage boutiques and global eateries, get lost amongst Portobello Road eclectic thoroughfares. Get your cultural fix at the Design Museum and Royal Albert Hall. An evening at Gold or Core by Clare Smyth – be home in just a few minutes.





PROPERTY HIGHLIGHTS

- Open-plan kitchen and reception room
- One further reception room
- Master bedroom suite
- Two further ensuite bedrooms
- Occasional bedroom / games room
- Family bathroom
- Roof terrace
- Study
- Private entrance and lift
- Royal Borough of Kensington & Chelsea



Approx. Gross Internal Area = 3824 sq ft / 355 sq m

Floor plans are for illustrative purposes only and not to scale. Compliant with RICS code of measuring practice.



Please don't hesitate to get in touch if you have any questions or require any further information.

hello@domusstay.com

+44 (0)20 8168 8880

Domus Stay provides the perfect combination of property, place and personal service for the world's most remarkable people. If you have any questions, or if we can help in any way, please contact us on the above number. Be it about a property you have, a property you want, dates to check or any special requirements you may need, we'd love a chat.

