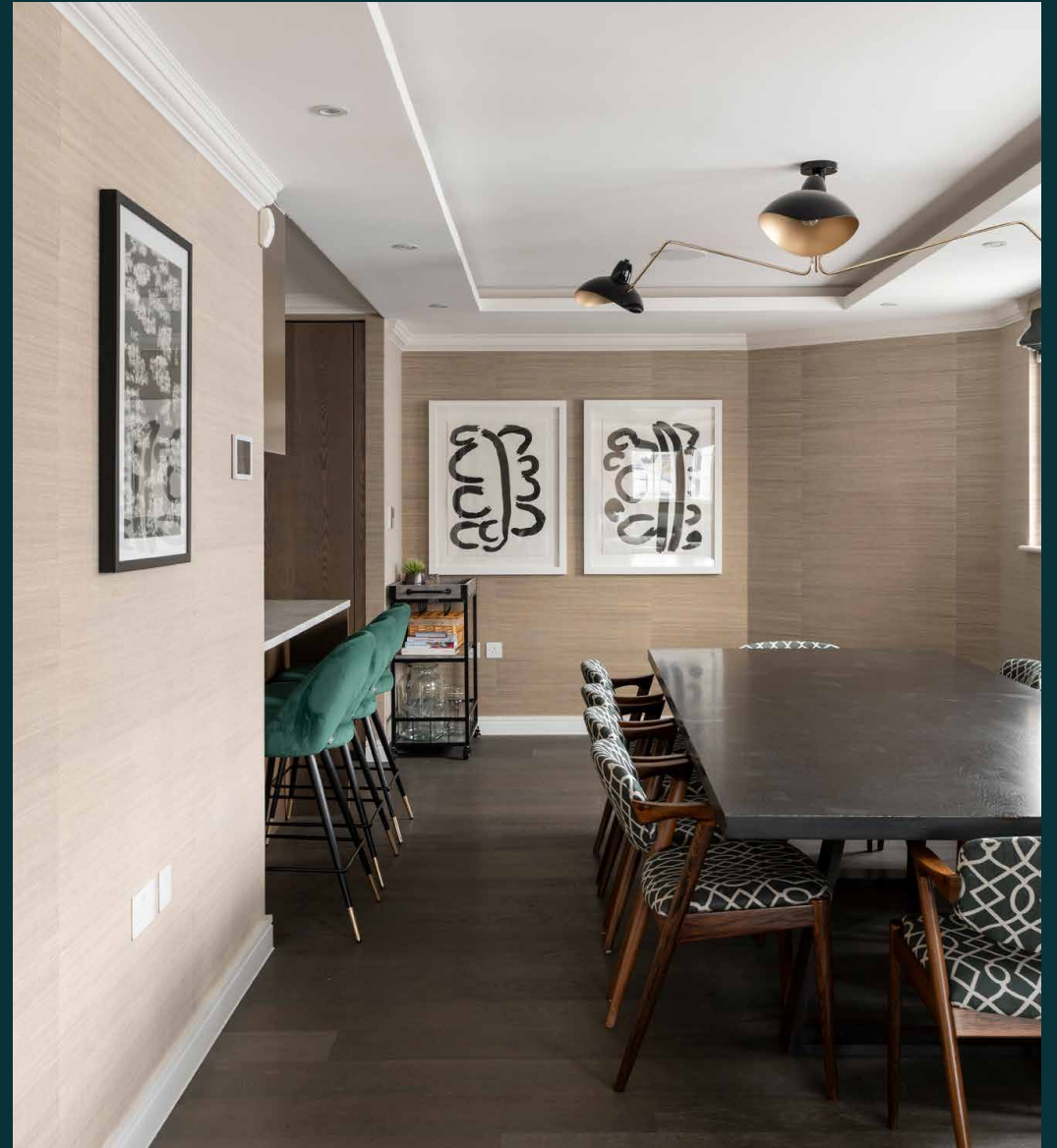


domus
stay.

New Cavendish Street

MARYLEBONE

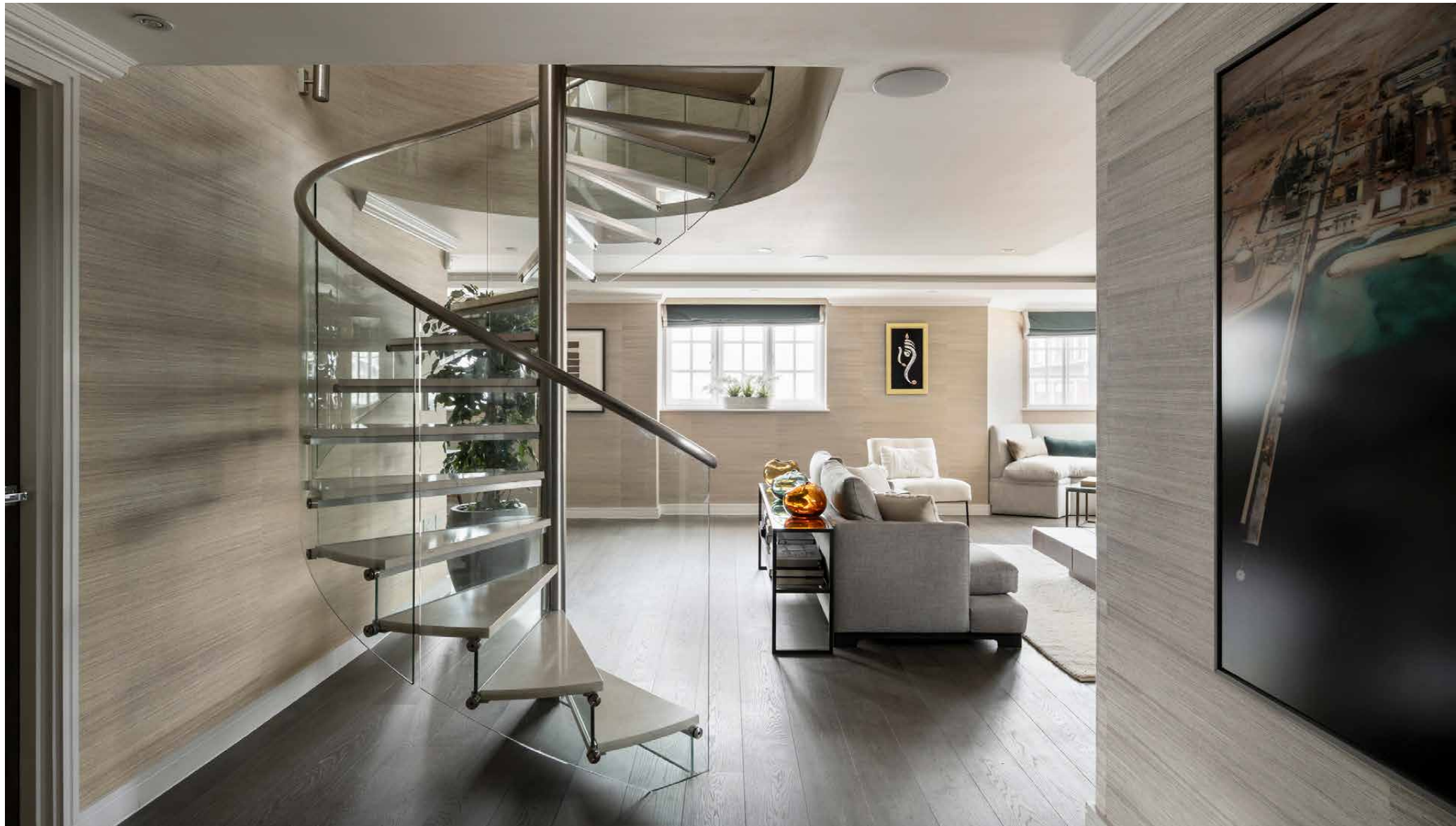
3 Bedrooms, 3 Bathrooms
For 6 guests





This luxury penthouse to rent in London impresses with urbane interiors.

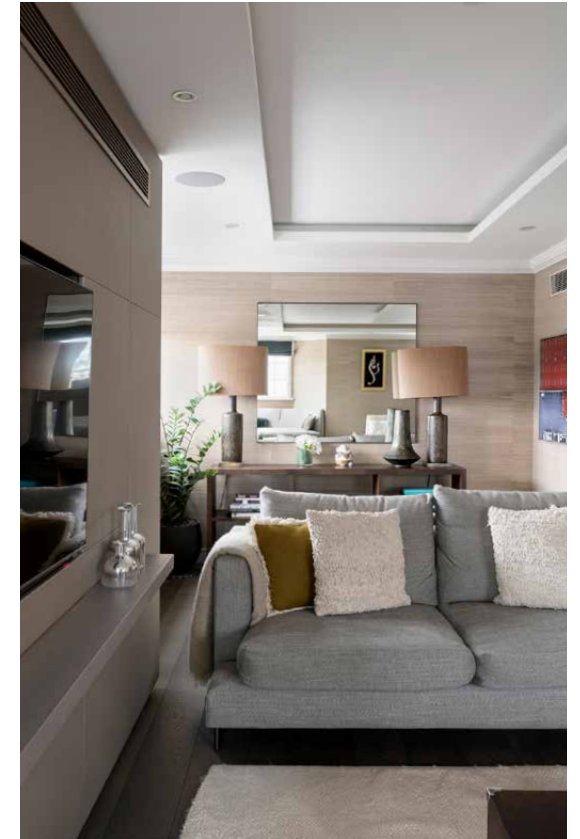
In a central London spot famed for its 20th-century literary links, a towering Victorian mansion block has been reinterpreted with contemporary style. Equidistant from Oxford Street and Regent's Park, an exceptional penthouse sits at the heart of the action. Arranged across two sprawling floors plus a private roof terrace, this considered duplex comes with space to spread out. The home additionally benefits from a weekday porter, plus air conditioning throughout.



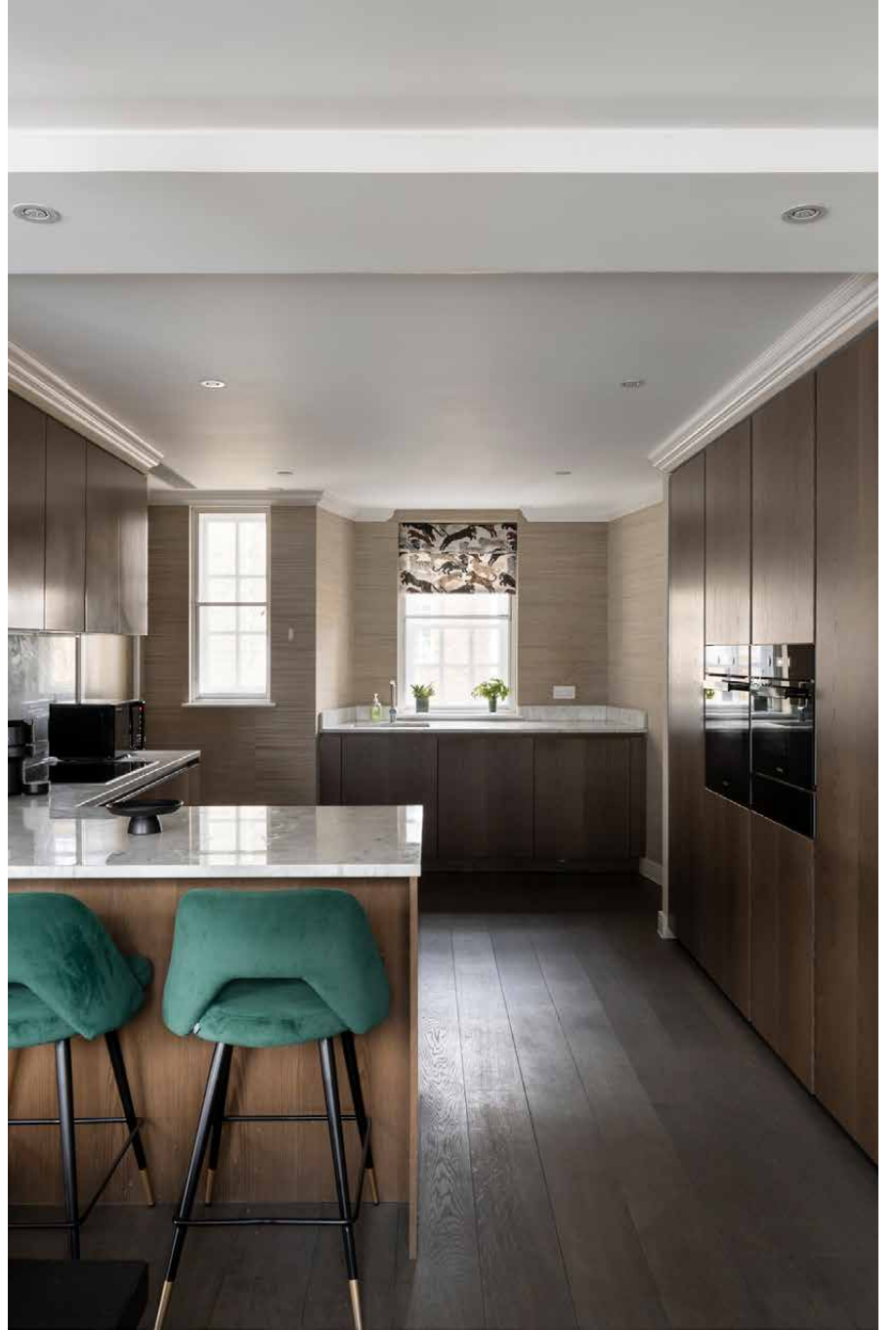


The living spaces

Take the lift directly to the fourth floor, and step inside to a social hub awash with light. Featuring design by Louisa Penn Interiors, a dialogue between light and dark plays out. Neutral walls and dark wooden floors set the stage for entertaining in the lounge – sip coffees at the window seat or settle back into the sofa for movies on the widescreen TV. The German-engineered Hacker kitchen is equally as impressive – an open-plan layout and Miele appliances offer versatility for the most serious or sociable chefs. Grab a bottle from the wine cooler and gather friends at the ten-seat dining table.



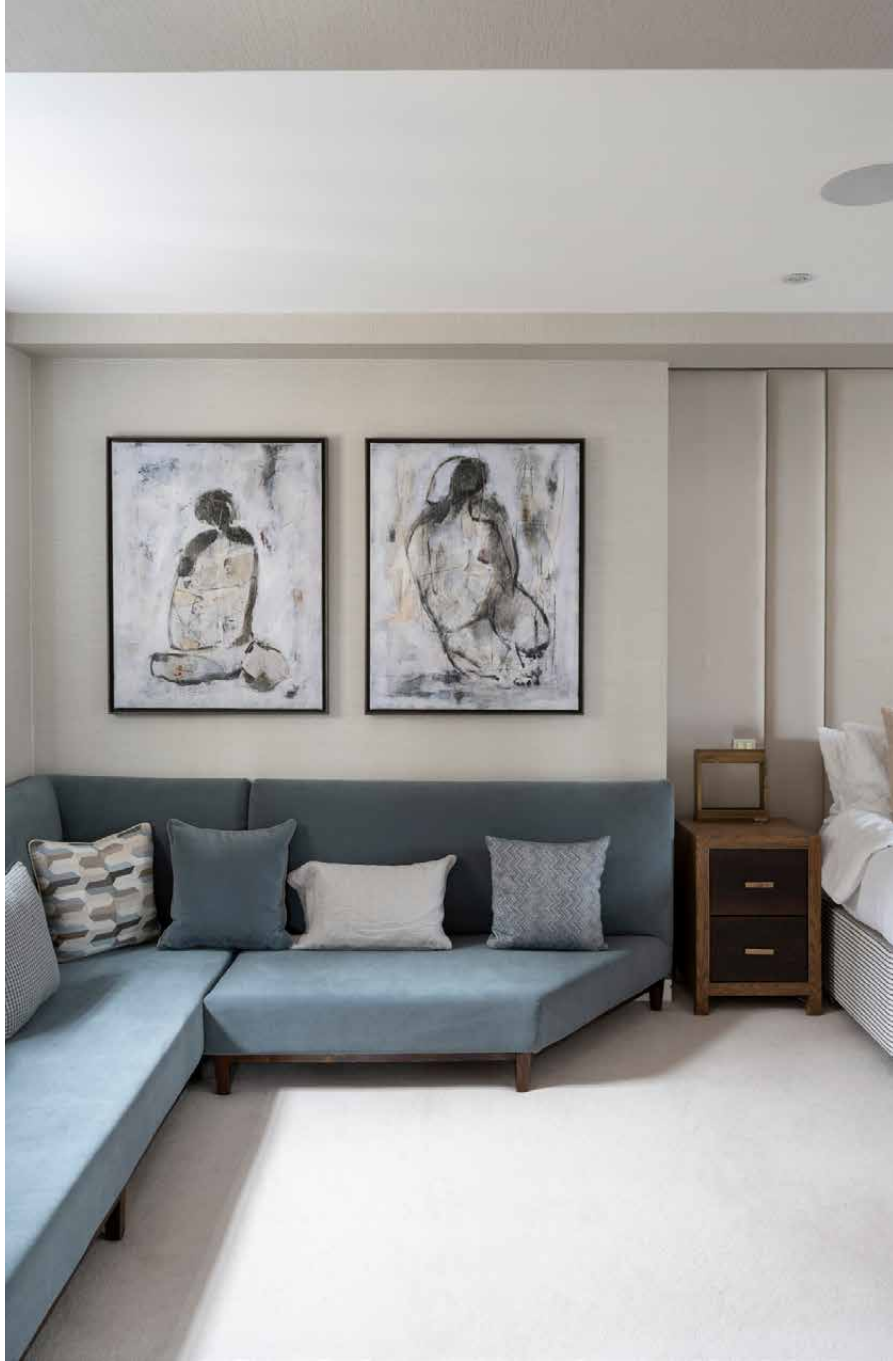


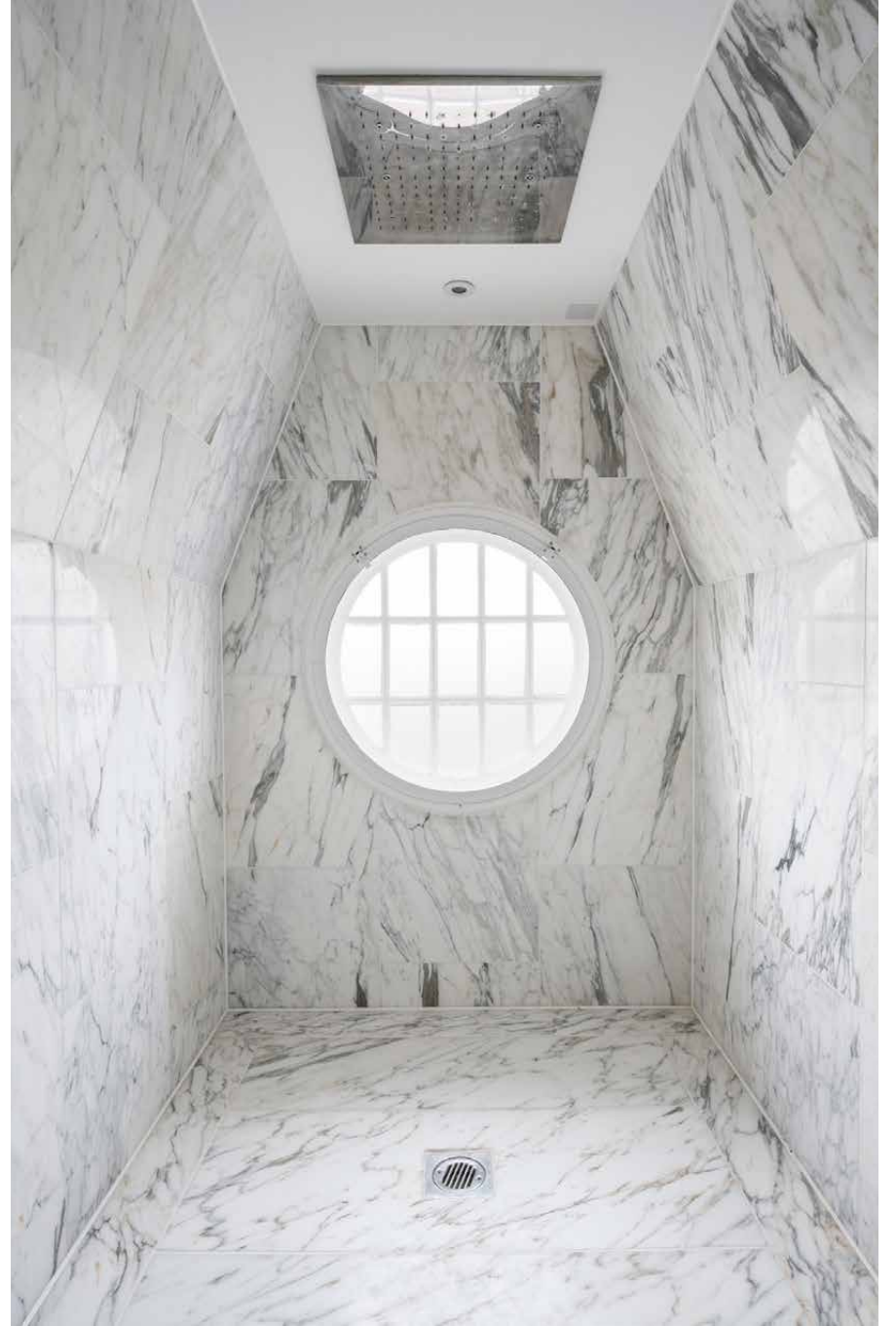




Bedrooms & bathrooms

Ascending a striking spiral staircase to the upper floor, the principal bedroom emulates your own private enclave. Sleeping quarters are pared-back for a restful feel, while a walk-in wardrobe leads to the pièce de résistance. Decked out in Italian marble, the en suite bathroom is sky-lit and showstopping. Sink into the freestanding tub or wash the day away under the rainfall shower. Two further bedroom suites are found on the fourth and fifth floor, the former connecting directly with a private study.







Outdoor space

At the top of the home, capitalise on the exceptional setting with afternoons on the roof terrace. Featuring panoramic city views, it's the perfect spot to soak up the sun or enjoy sundowners with friends.



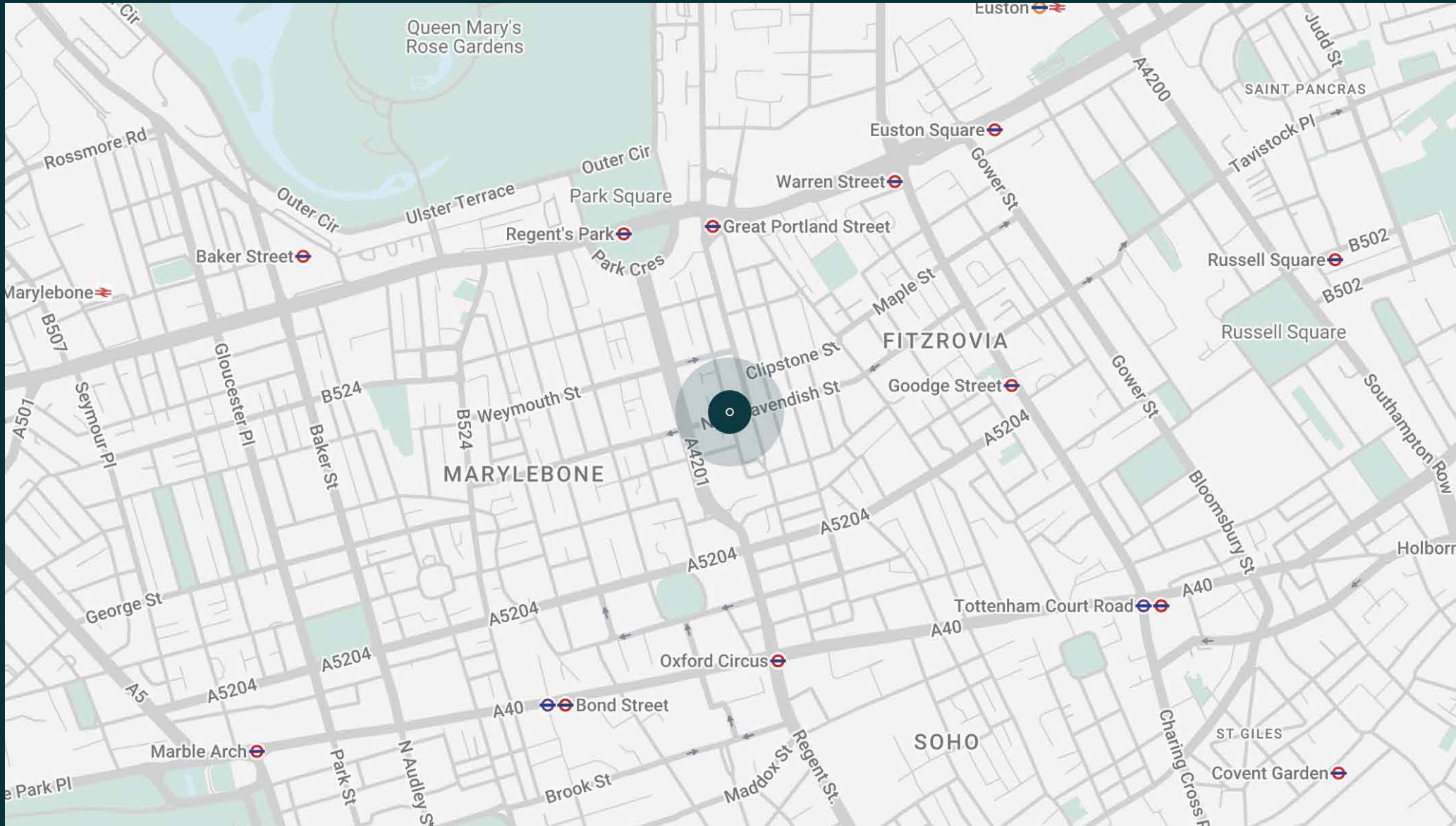


The neighbourhood

Set between Regent's Park and Oxford Street, New Cavendish Street is an exceptional setting for easy access to the city.

Only a short walk away from some of London's best sights, this penthouse apartment sits in a sought-after spot. Start the day with brunch and coffee from Drunch, before heading south to Oxford Street for an array of retail therapy options. For Michelin-starred Indian cuisine, dine at Trishna. For culture, head to Moco Museum London. On sunny days, the lawns and gardens of Regent's Park are within a 10-minute walk.



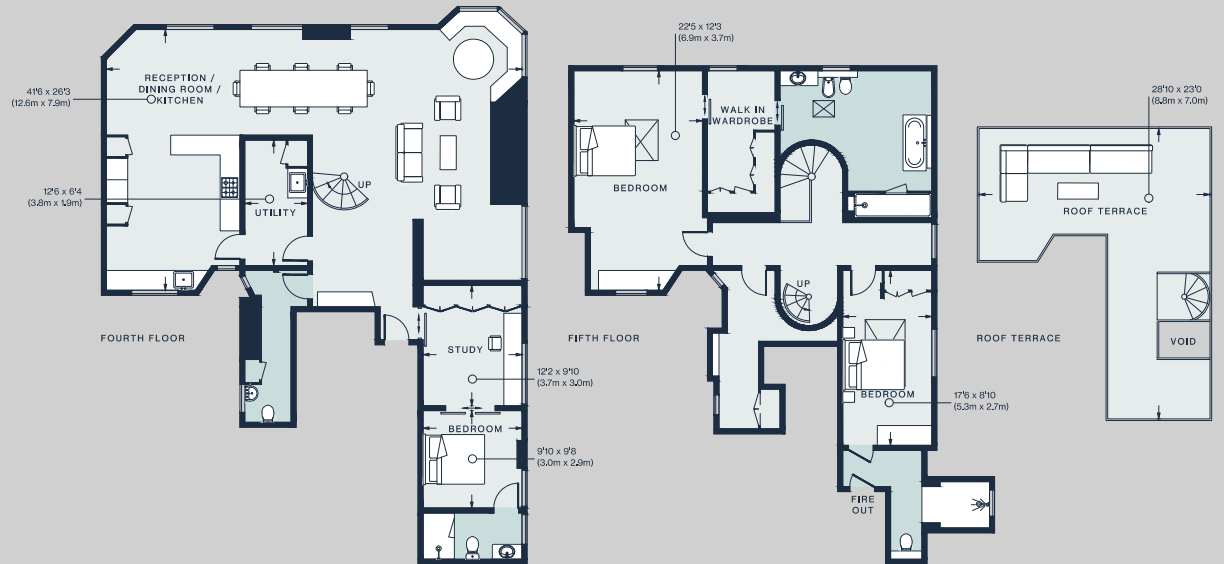




Property features

- Open-plan kitchen, dining and reception room
- Principal bedroom suite
- Two guest bedroom suites
- Study
- Roof terrace
- Air conditioning
- Lift access
- Porter

Approx. 2,551 sq ft / 233.3 sq m



Approx. Gross Internal Area = 2,511 sq ft / 233.3 sq m

Floor plans are for illustrative purposes only and not to scale. Compliant with RICS code of measuring practice.

Guest & concierge services

Our concierge team are here to help guests settle in, seamlessly. Centre court tickets to Wimbledon, Premier League seats with the best views, Savile Row tailors on standby, or a private chef to cater to individual tastes – we aim to elevate every stay.

From the moment of booking with us, each guest has a single point of contact to finesse the details. Our statement spaces are just the starting point – to ensure everyone feels at home, our rates include:

- Weekly housekeeping
- Flexible check-in/out
- Luxury linens and Bamford toiletries
- Legal compliance on all our homes
- A personal welcome and arrival essentials
- Unlimited access to guest services and tailored experiences
- Professional inventory inspection before and after every stay
- Access to a curated portfolio of sole agency properties



domus stay.

Please get in touch if you have any questions
or require any further information.

hello@domusstay.com

+44 (0)20 8168 8880

The property particulars are a guide not statements. Descriptions, photographs, and plans are for guidance only. The Property is offered "subject to contract and references". No warranties, representations, License or Tenancy is given by Domus Stay. Our full disclaimer together with trading names and our Privacy Policy is shown on our website

© Domus Stay 2025. All rights reserved.

