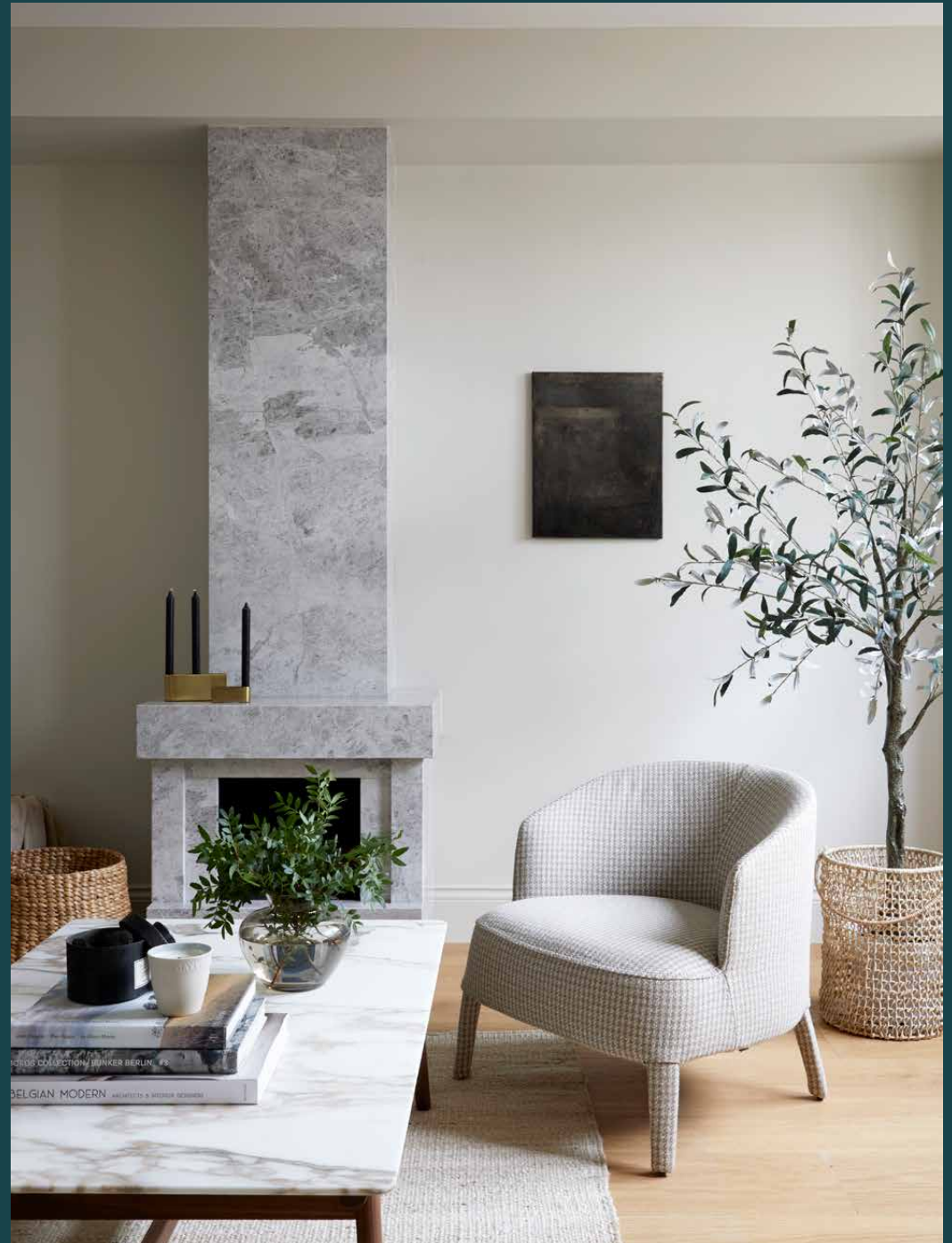

Napier Place

Kensington W14

3 Bedrooms, 2 Bathrooms
For 6 guests





**This three-bedroom mews townhouse
in Kensington exudes elegant and
serene simplicity.**

Crafted with the expert eye of Finkerngal Ross architects, this three-bedroom townhouse is a lesson in timeless sophistication. Tucked away in the heart of Kensington is Napier Place, a cobbled mews street that feels worlds away from London's metropolitan thrum. A sage green door makes a stylish first impression, entering into the spacious open-plan ground floor. The kitchen is all smooth marble worktops and sleek integrated appliances, making for a streamlined culinary set-up. The minimalist dining table seats six. At the other end of the room, there's a relaxed and organic feel to the living area — complete with pebble-toned seating, textured fabrics and a modern stone fireplace.



Thanks to Finkernagel Ross' acute understanding of colour, texture and layout, these architects have transformed Napier Place into a soothing minimalist setting.



“

The kitchen is all smooth marble worktops and sleek integrated appliances, making for a streamlined culinary set-up.



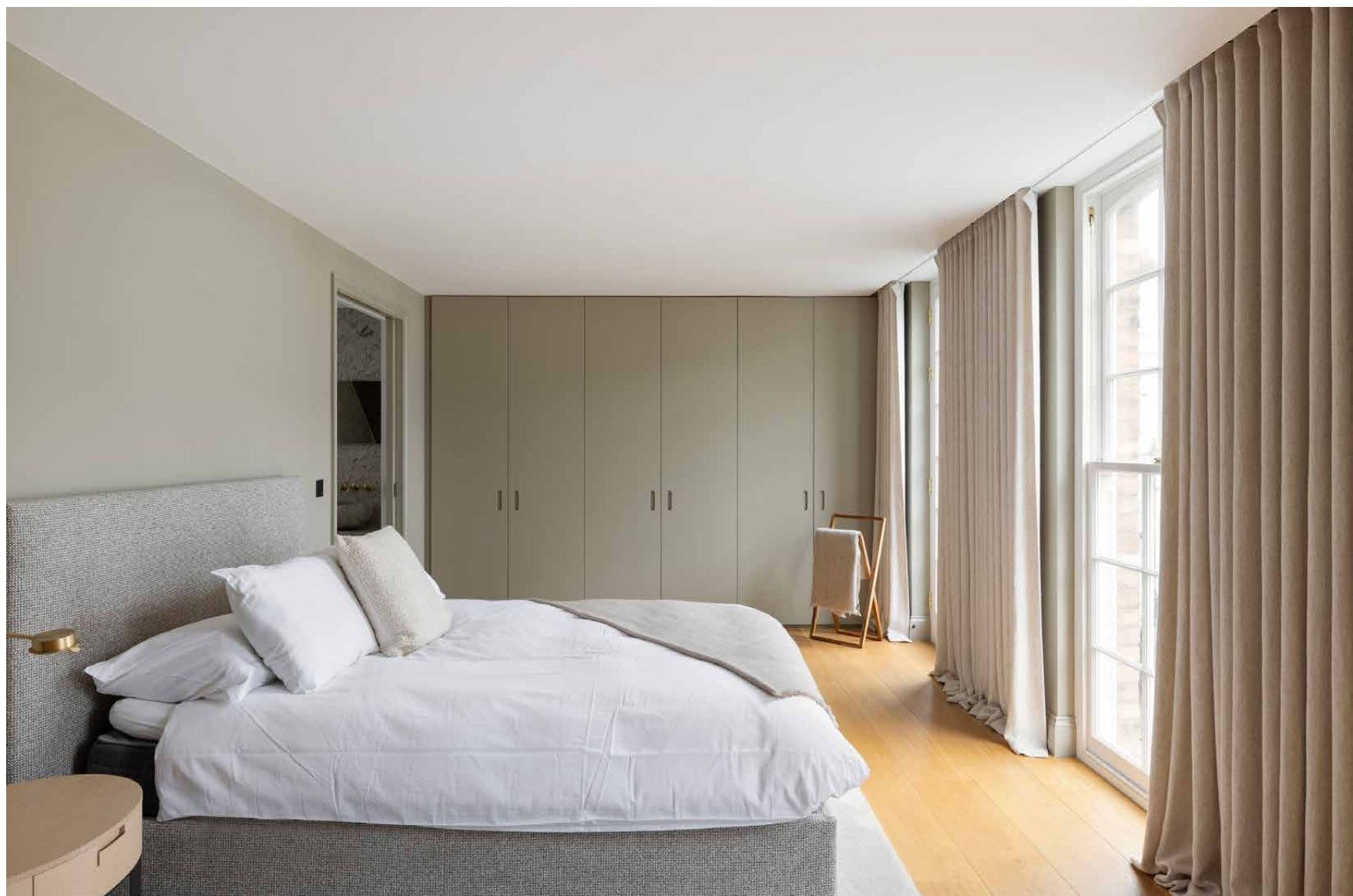




An immaculately engineered staircase winds up to the first floor principal bedroom. It's a thoroughly calming setting, bathed in sunlight through full-height fenestration. Two of them are French windows, which open onto Juliet balconies that gazes across the mews. Comfort is prioritised here, from the king-size bed to the row of floor-to-ceiling wardrobes. The en suite bathroom is a masterstroke of marble tiling, wrapping around a freestanding bathtub and walk-in rainfall shower. Two guest bedrooms and an additional bathroom are located on the second floor, each maintaining the home's characteristic muted colour palette and refined furniture.

















LOCATION

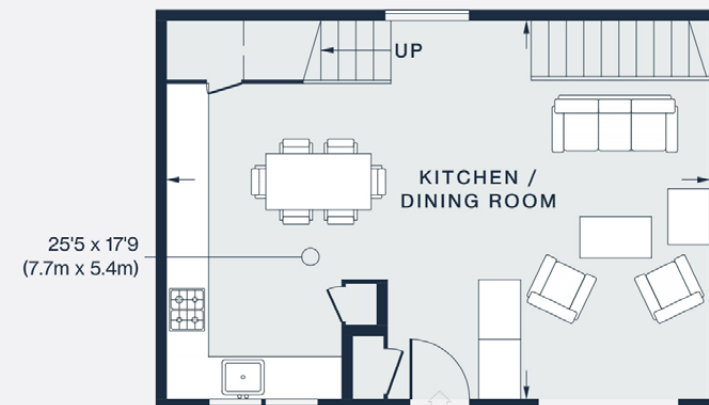
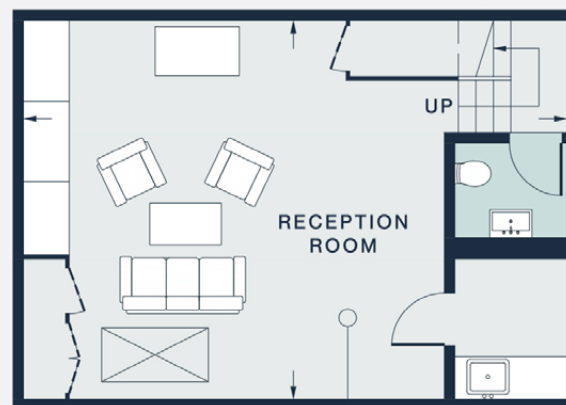
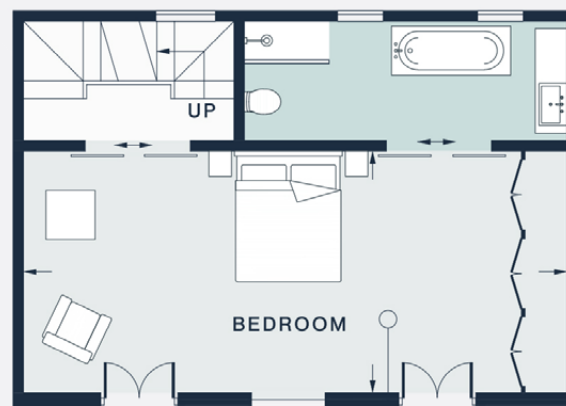
Caught between the storied streets of Kensington and the vibrant bustle of Shepherd's Bush, Napier Place enjoys west London's most diverse offerings.

A short walk gets you to the verdant lawns of Holland Park; admire the beautiful Kyoto Gardens or head to the Design Museum for a world-class exhibition. The Village at Westfield Shopping Centre is home to renowned luxury boutiques, High Street Kensington for your essentials or venture further into Notting Hill for its notorious vintage shopping. For a night of fine-dining, Kitchen W8 is just ten minutes' away for a Michelin-starred, modern European menu.



PROPERTY HIGHLIGHTS

- Architecture by Finkernagel Ross
- Open-plan kitchen and living room
- Principal bedroom suite
- Two guest bedrooms
- One further bathroom
- Royal Borough of Kensington & Chelsea



Approx. Gross Internal Area = 1,809 sq ft / 168.1 sq m

Floor plans are for illustrative purposes only and not to scale. Compliant with RICS code of measuring practice.
Prepared for Domus Stay. Copyright © All Rights Reserved.



Please don't hesitate to get in touch
if you have any questions or require
any further information.

hello@domusstay.com

+44 (0)20 8168 8880

Domus Stay provides the perfect combination of property, place and personal service for the world's most remarkable people. If you have any questions, or if we can help in any way, please contact us on the above number. Be it about a property you have, a property you want, dates to check or any special requirements you may need, we'd love a chat.

