

domus  
stay.

---

## Moore Park Road

FULHAM SW6

4 Bedrooms, 4 Bathrooms  
For 9 guests

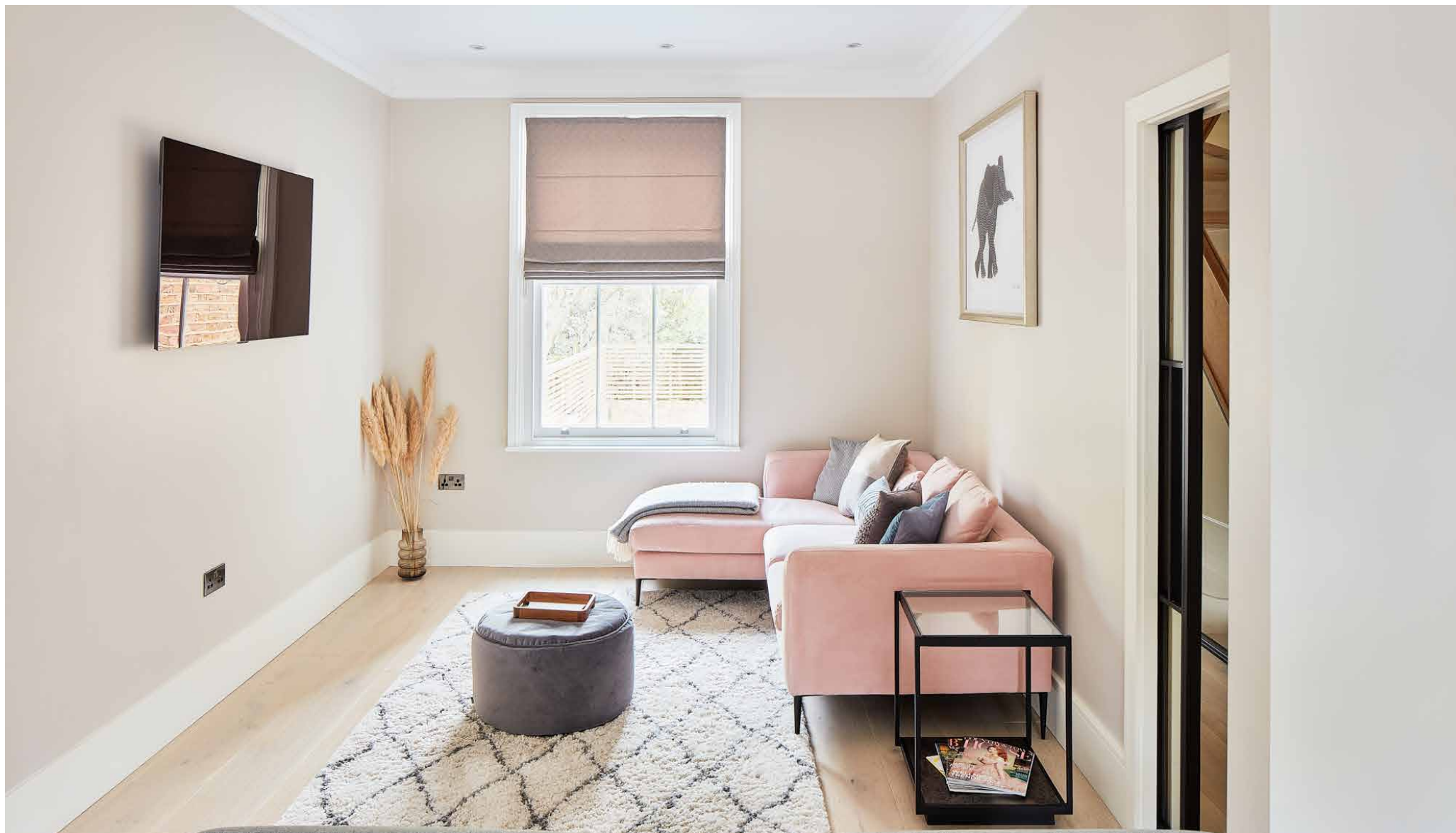
---





Stylish and serene. A four-bedroom city sanctum meticulously finished for the demands of family life.

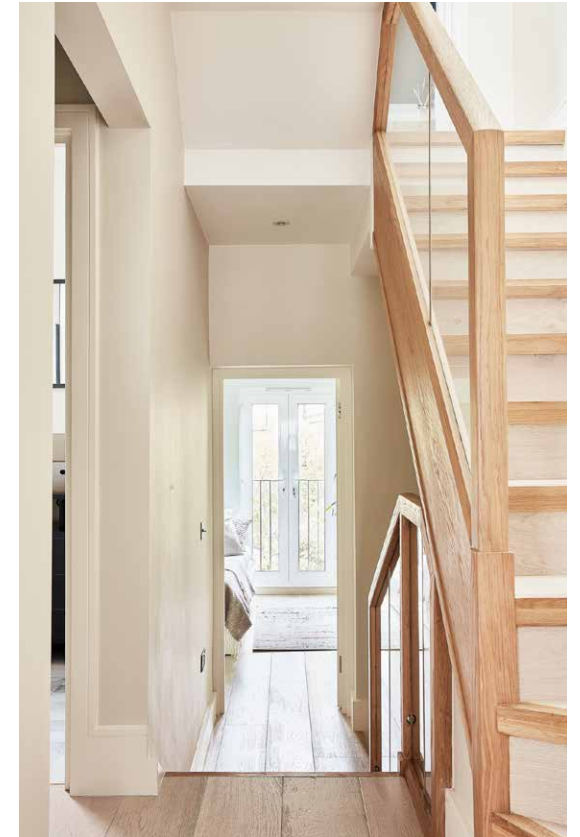
There's sophisticated poise to this terraced house, which enjoys excellent proximity to the sleek streets of Fulham and Chelsea. Tucked away in a peaceful road, the muted grey façade, with immaculate cast-iron railings, is a precursor to the home's sleek interior palette. Exceptional attention to detail spanning four floors; tranquil homeliness and elevated design in equal measure. The sweeping hallway showcases period cornicing – an ode to the property's heritage – which has been updated with a New York-inspired industrialism.





# The living spaces

Head downstairs to the open-plan kitchen and dining room – a conversation in colour and materiality: a custom-made brass extractor hood converses with steel-blue cabinets. Clusters of Edison-style lights illuminate the island, and the glass roof provides the perfect spot to read the morning papers. Back up to the ground floor, a light-flooded living space purposed for entertaining and relaxing sits alongside a peaceful study for home workers – there's fantastic privacy, courtesy of a corrugated Crittall door.













Fully integrated appliances, sweeping surfaces and an engaging palette of materials. A Qooker tap provides boiling water on demand. Perfect for the keenest of cooks.



# Outdoor space

In warmer moments, open the doors from the kitchen onto the south-facing patio garden. A dining table invites long summer lunches, with a hammock for those mid-afternoon snoozes.







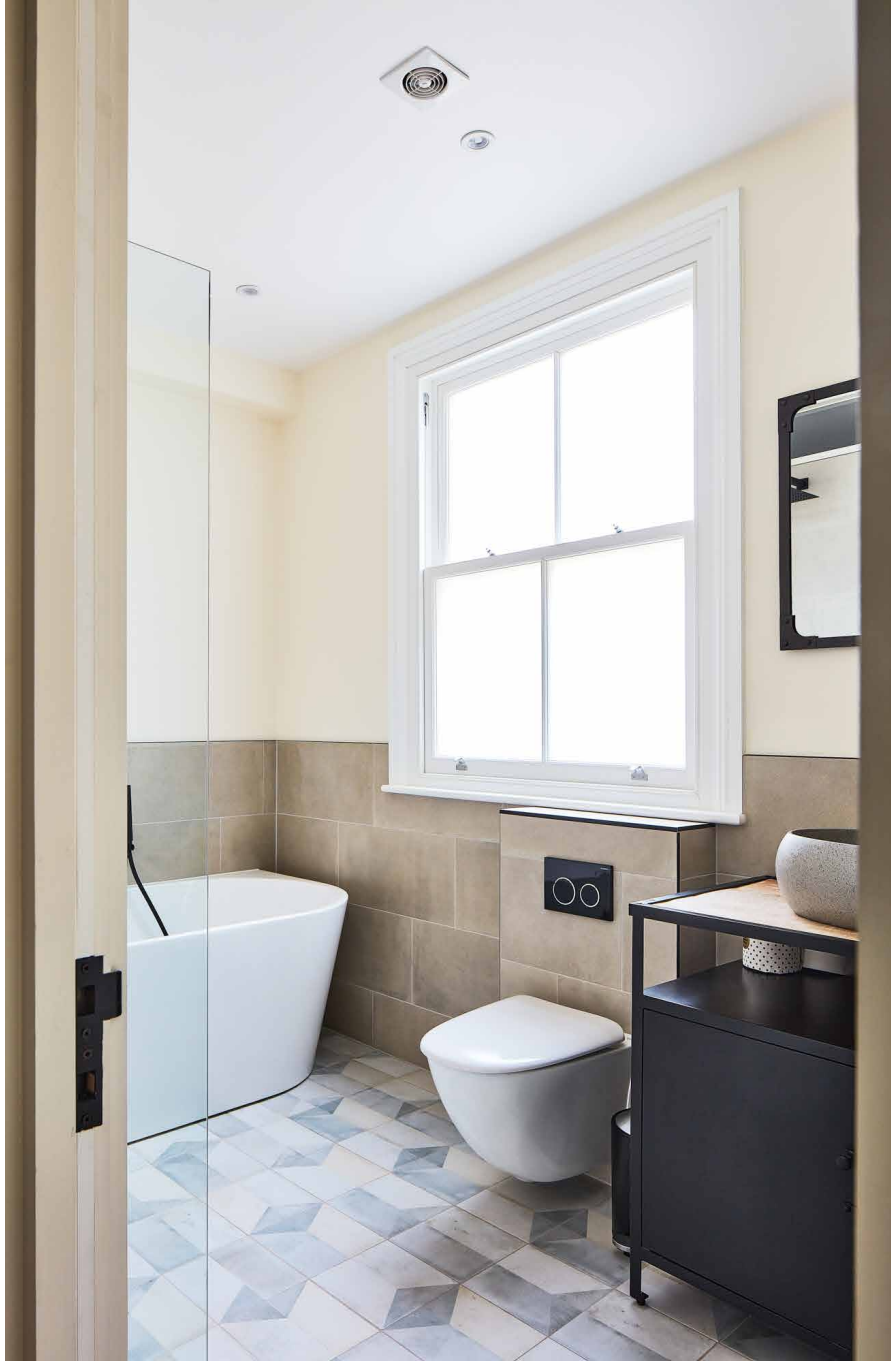
## Bedrooms & bathrooms

Upstairs, the sleeping quarters are at once laid-back and polished. The master suite is a pared-back haven, with soaring wardrobes for to store treat-yourself retail purchases. An absorbing en-suite wrapped in glossy white tiles sits next door. Pale wood stairs lead to the remaining bedrooms, all characterised by an understated luxe and served by immaculate bathrooms.

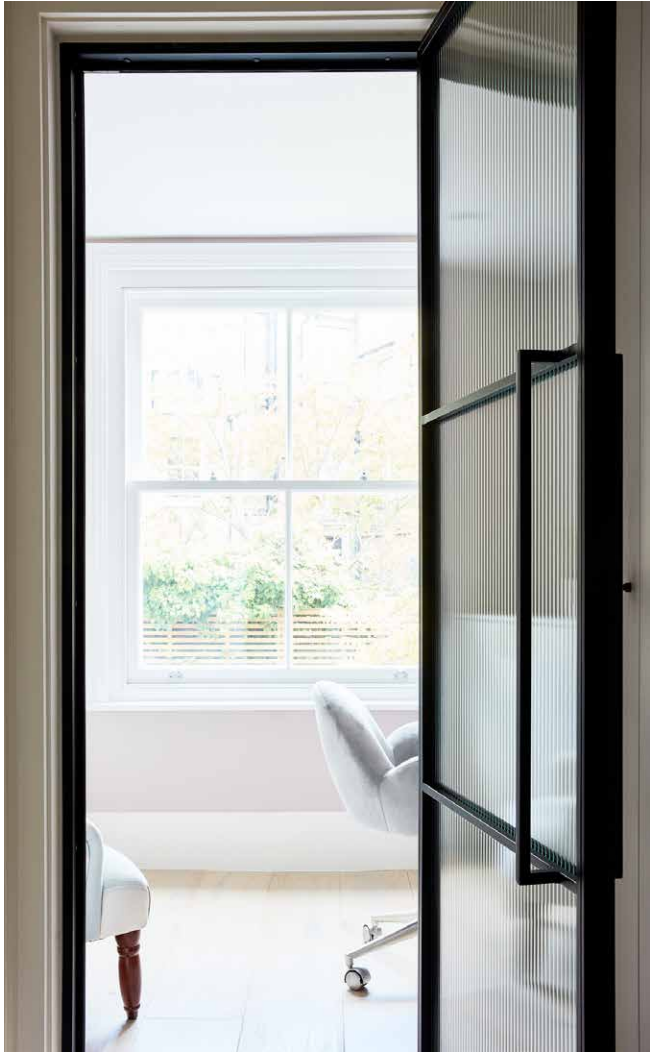












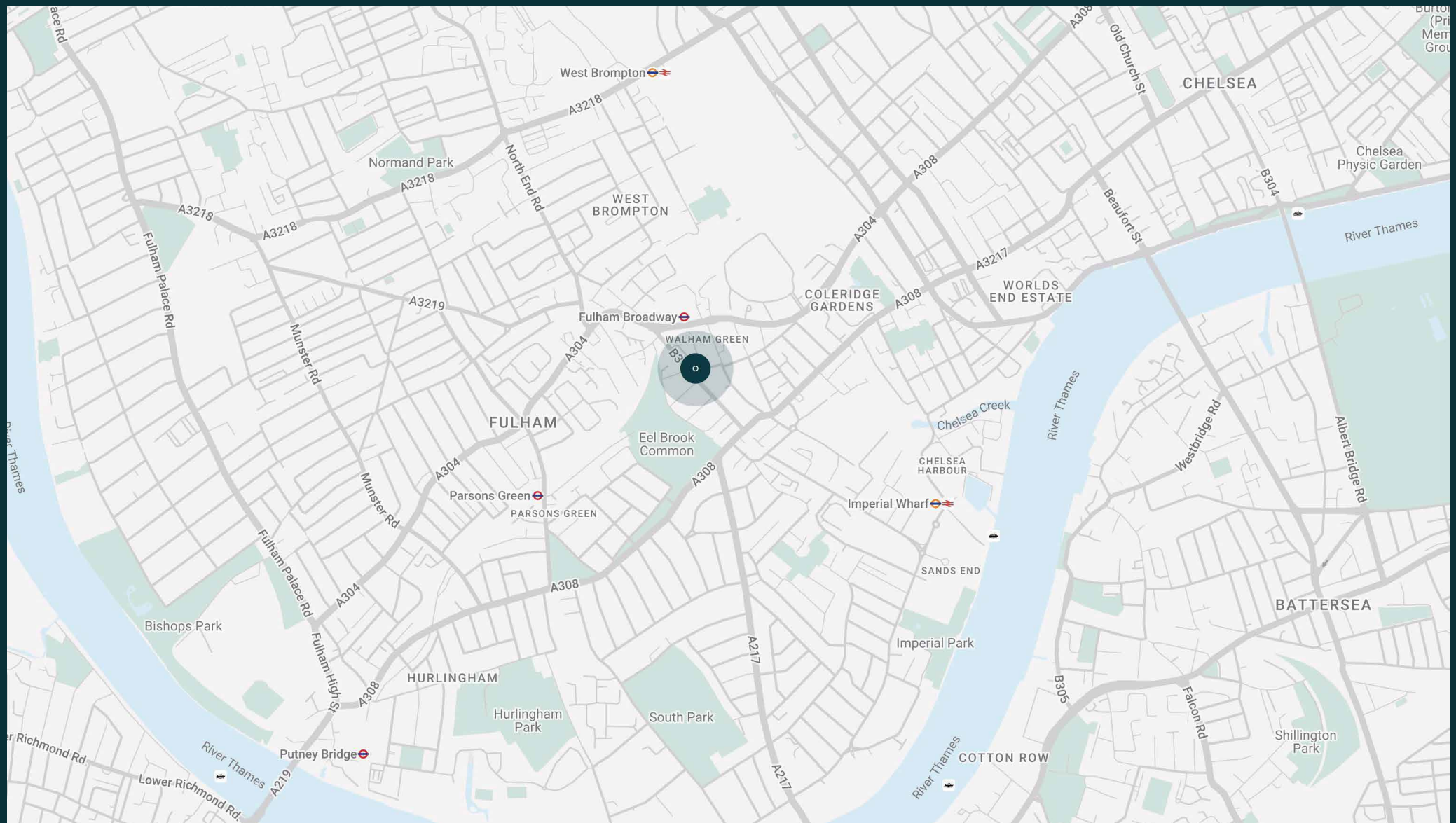
# The neighbourhood

At once serene and vibrant, Fulham is a neighbourhood notorious for its sense of community, array of shops, eateries and its riverfront scenery.

Take your pick of leafy green spaces to explore, from Imperial Park to Parsons Green and Eel Brook Common, or enjoy a game of tennis at the Hurlingham Club or Harbour Club. For creative inspiration, check out the showrooms at The Design Centre at Chelsea Harbour and refuel with pastries from French deli Chanteroy or brunch at Hally's. Make Brook House your local and be home in five. With Fulham Broadway station just up the road, it's easy to head into central London and beyond.







# Property features

- Open-plan kitchen and dining room
- Formal reception room
- Principal bedroom suite
- Three further bedrooms
- Study
- Private garden
- Laundry room
- Cloakroom
- London Borough of Hammersmith and Fulham

Approx. 186.8 sq m / 2,011 sq ft



Approx. Gross Internal Area = 2011 sq ft / 186.8 sq m  
(Excluding External Cupboards)

Floor plans are for illustrative purposes only and not to scale. Compliant with RICS code of measuring practice.  
Prepared for Domus Stay. Copyright © All Rights Reserved.



# Guest & concierge services

Our concierge team are here to help guests settle in, seamlessly. Centre court tickets to Wimbledon, Premier League seats with the best views, Savile Row tailors on standby, or a private chef to cater to individual tastes – we aim to elevate every stay.

From the moment of booking with us, each guest has a single point of contact to finesse the details. Our statement spaces are just the starting point – to ensure everyone feels at home, our rates include:

- 
- Weekly housekeeping
  - Flexible check-in/out
  - Luxury linens and Bamford toiletries
  - Legal compliance on all our homes
  - A personal welcome and arrival essentials
  - Unlimited access to guest services and tailored experiences
  - Professional inventory inspection before and after every stay
  - Access to a curated portfolio of sole agency properties





Please get in touch if you have any questions  
or require any further information.

---

[hello@domusstay.com](mailto:hello@domusstay.com)

+44 (0)20 8168 8880

The property particulars are a guide not statements. Descriptions, photographs, and plans are for guidance only. The Property is offered "subject to contract and references". No warranties, representations, License or Tenancy is given by Domus Stay. Our full disclaimer together with trading names and our Privacy Policy is shown on our website

© Domus Stay 2025. All rights reserved.

