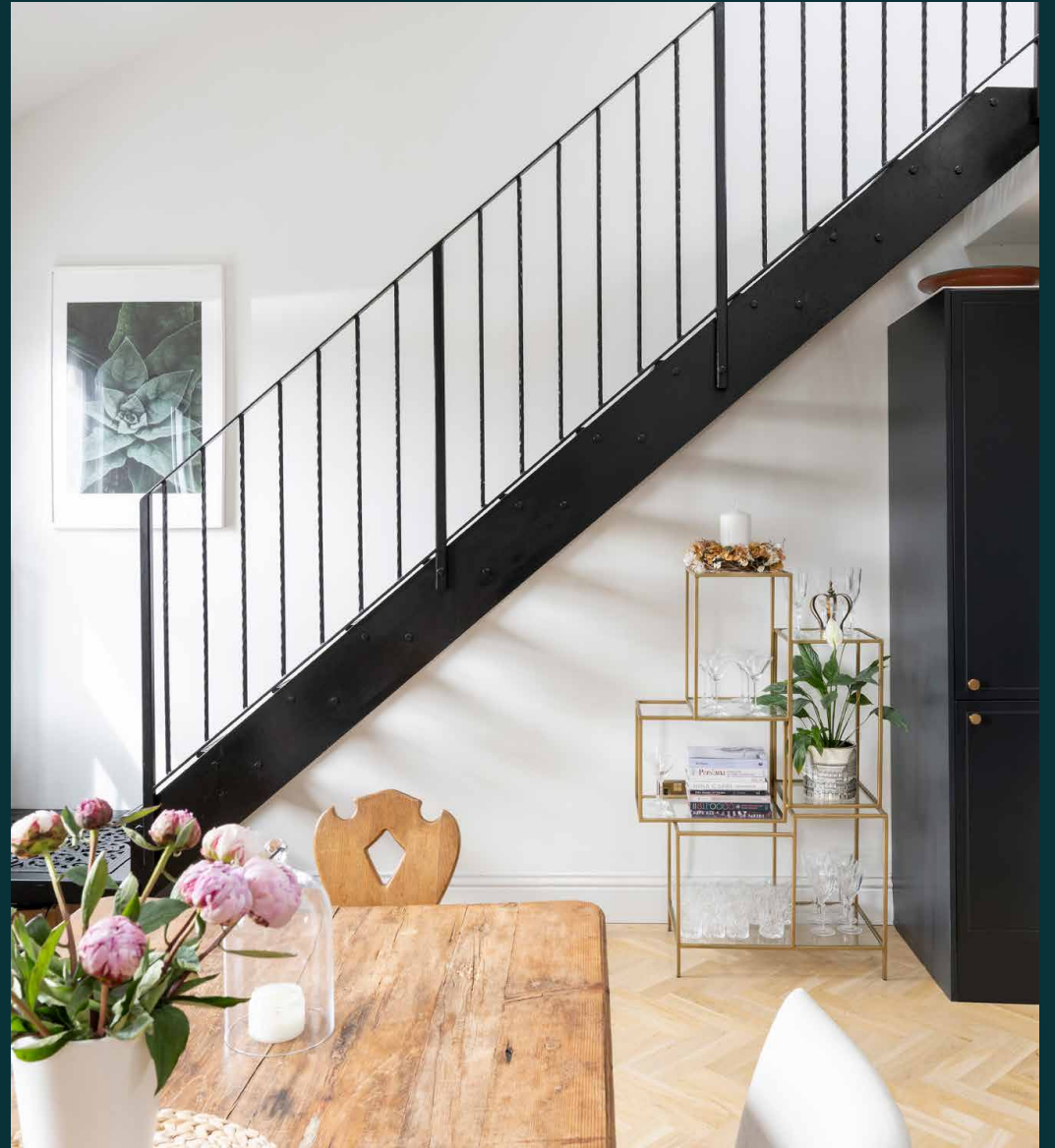


domus
stay.

MacFarlane Road

SHEPHERD'S BUSH W12

3 Bedrooms, 2 Bathrooms
For 6 guests





This three-bedroom duplex apartment in Shepherd's Bush marries heritage charm with contemporary design.

Bright open spaces are what this statement-making three-bedroom duplex is all about. Arranged across three floors of a classic townhouse in Shepherd's Bush, period features combine with clean lines and sleek finishes to create a truly elegant setting.



The living spaces

The open-plan kitchen and dining room sits at the heart of the apartment. Sash windows bookend the space, while a double-height ceiling and Velux windows allow plenty of natural light to stream in. Honey-hued parquet floors and an emerald-tiled fireplace highlight the apartment's period heritage, while a pine kitchen table for six brings a country-pile feel. A rangemaster-style cooker with gold finishes is a welcome addition alongside white marble countertops and a breakfast bar, ensuring all your hosting needs are met. You'll also find a guest WC finished with pale blue herringbone tiling on this floor. In the corner of the dining area, an iron staircase winds its way up to the mezzanine living room. Neutral tones and leafy houseplants bring a calming atmosphere.







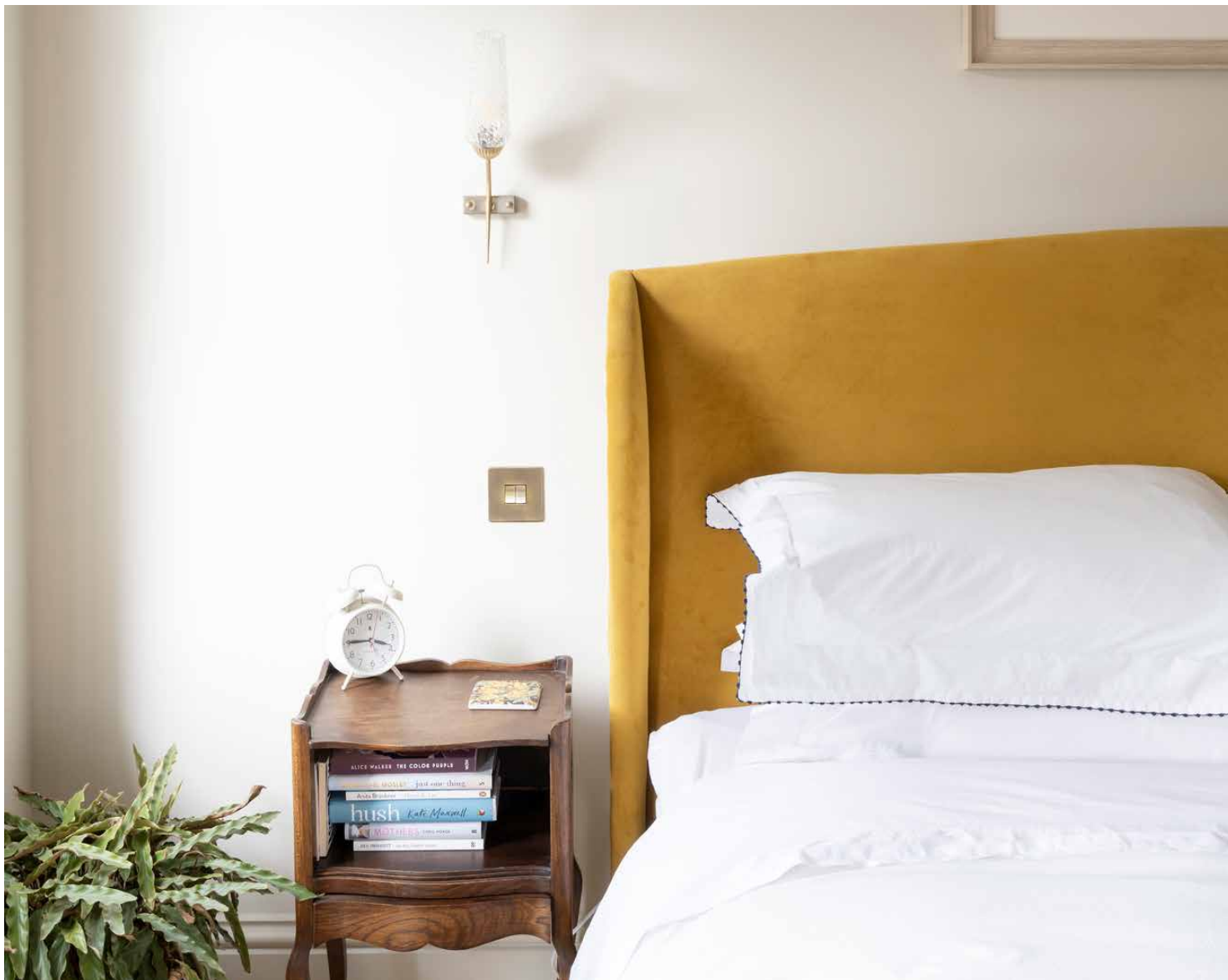
“Sash windows and a double height ceiling let natural light wash through the apartment.”



Outdoor space

From the mezzanine living room, French doors open onto a terrace, creating a streamlined flow between inside and out. Enjoy views out over the rooftops with a morning coffee.





Bedrooms & bathrooms

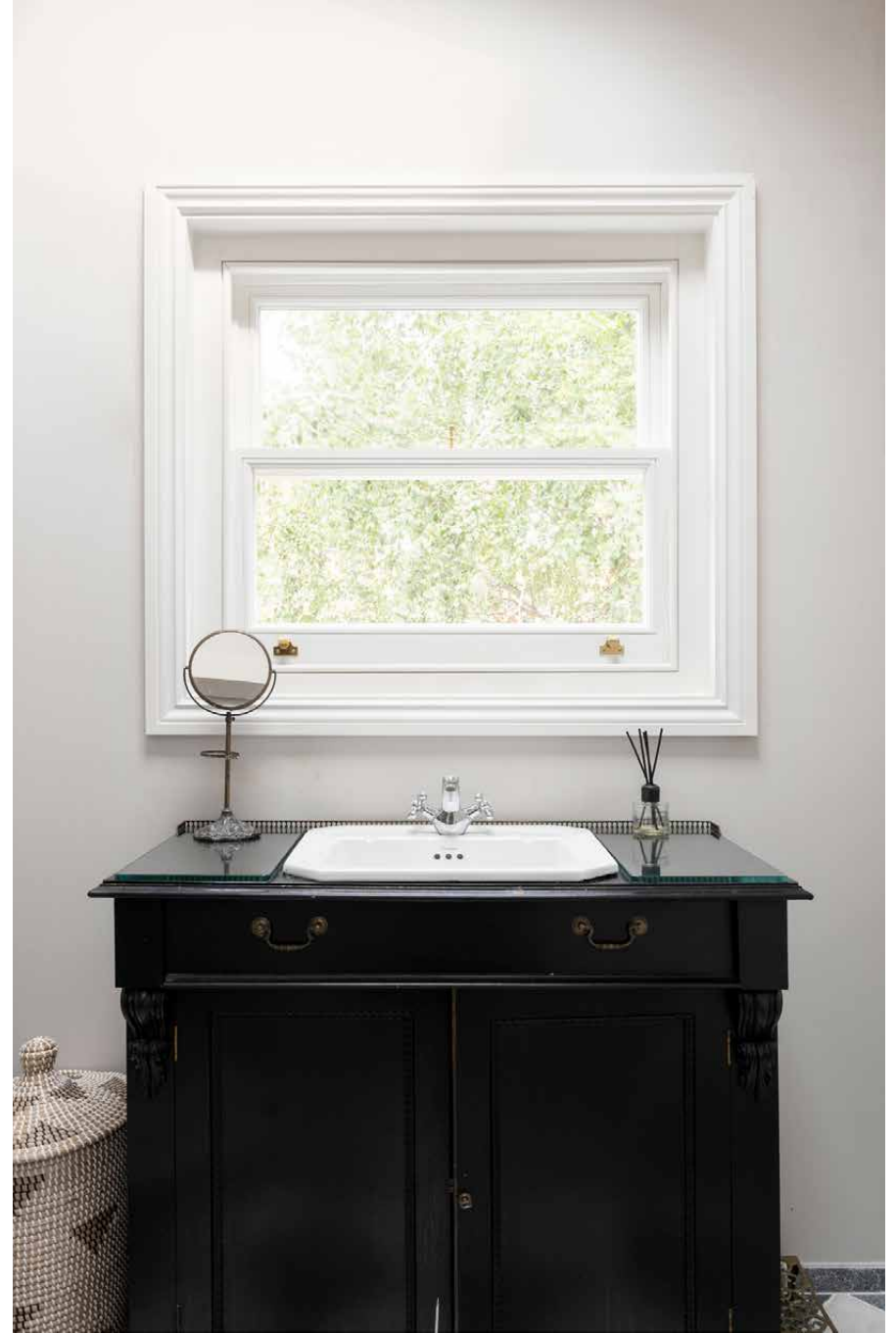
Back downstairs, a guest bedroom sits behind a barn door and comes complete with an exposed brick feature wall, period cornicing and a desk – a versatile addition that could be useful for home working. These considered finishes continue into the bedroom suites below.

The principal suite features custom-made wardrobes and a green statement fireplace that pays homage to the apartment's past. The adjoining bathroom offers a refreshing interplay between old and new with an enticing stand-alone bathtub and antique basin unit, alongside a walk-in shower. The guest suite is similarly inviting, with its striking stork wall mural and elegant en suite bathroom.







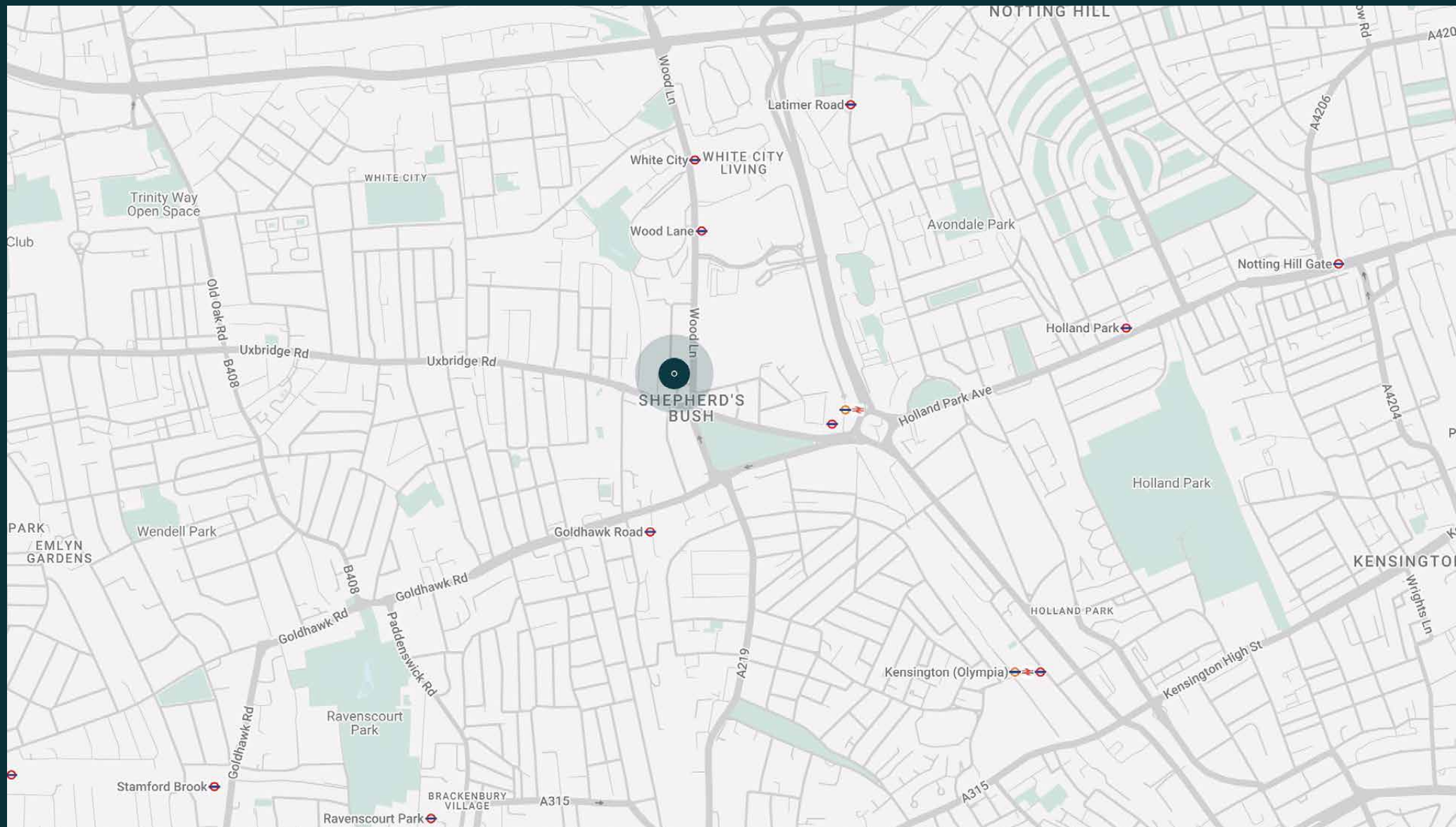


The neighbourhood

With Shepherd's Bush and Holland Park just a short walk away, MacFarlane Road is within easy reach of some of west London's best offerings.

Start your day with a laid-back breakfast at Proud Mary's or Wild Thyme, both just a short walk away. Then head to Westfield shopping centre to find Louis Vuitton, Prada and Mulberry at The Village. Alternatively, stroll into Hammersmith and enjoy a walk along the river, or venture north to White City House and nearby restaurants Waka, Bluebird or Michelin-starred Endo at the Rotunda. Leafy Holland Park is also just down the road, or hop on the Central Line to Notting Hill Gate to explore Portobello Road Market.





Property features

- Open-plan kitchen and dining room
- Mezzanine living room
- Principal suite
- Guest bedroom suite
- One further bedroom
- Family bathroom
- Cloakroom
- Private terrace



Guest & concierge services

Our concierge team are here to help guests settle in, seamlessly. Centre court tickets to Wimbledon, Premier League seats with the best views, Savile Row tailors on standby, or a private chef to cater to individual tastes – we aim to elevate every stay.

From the moment of booking with us, each guest has a single point of contact to finesse the details. Our statement spaces are just the starting point – to ensure everyone feels at home, our rates include:

-
- Weekly housekeeping
 - Flexible check-in/out
 - Luxury linens and Bamford toiletries
 - Legal compliance on all our homes
 - A personal welcome and arrival essentials
 - Unlimited access to guest services and tailored experiences
 - Professional inventory inspection before and after every stay
 - Access to a curated portfolio of sole agency properties





Please get in touch if you have any questions
or require any further information.

hello@domusstay.com

+44 (0)20 8168 8880

The property particulars are a guide not statements. Descriptions, photographs, and plans are for guidance only. The Property is offered "subject to contract and references". No warranties, representations, License or Tenancy is given by Domus Stay. Our full disclaimer together with trading names and our Privacy Policy is shown on our website

© Domus Stay 2025. All rights reserved.

