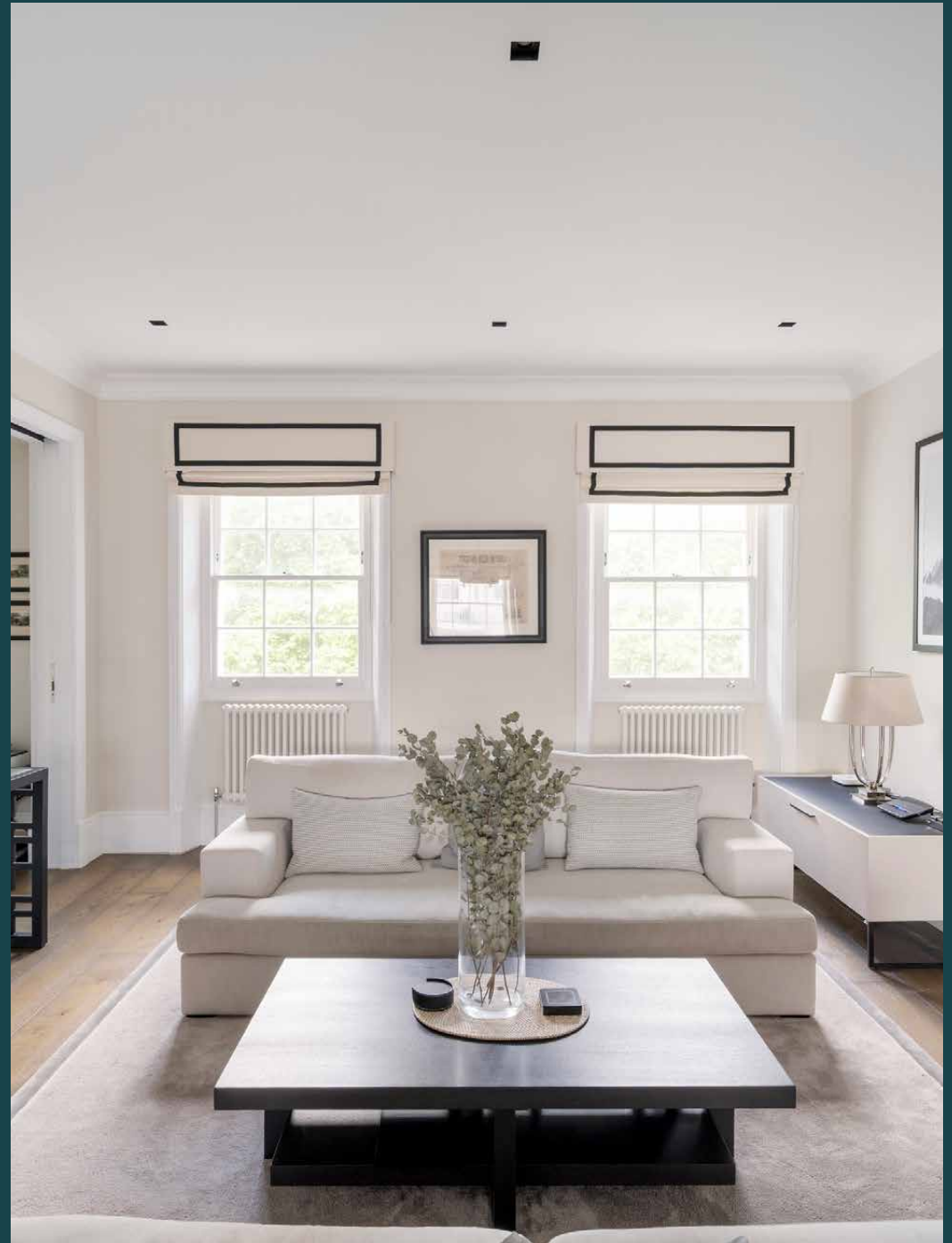

Lowndes Square

Knightsbridge SW1X

3 Bedrooms, 2 Bathrooms
For 6 guests





Elegance in every detail, this three-bedroom Knightsbridge duplex to rent is a masterclass in quiet refinement.

A blue plaque hints at this home's storied past – once occupied by the 2nd Duke of Wellington – but beyond the white stucco façade, a duplex has been reimagined for modern life. Positioned moments from Hyde Park, Sloane Square and Brompton Road's boutiques, its setting is as exclusive as it is central.

Arranged over the third and fourth floors, the home opens to a sweeping reception space. Warm wood floors and neutral tones frame a lounge where cream sofas gather around an ornate period fireplace – a soft interplay of classical and contemporary. Corning and column radiators nod to the home's past, while monochrome artwork and sculptural lighting add a more modern rhythm. Sash windows welcome in light, while a vintage Chesterfield armchair tucked into a corner study offers a moment of retreat.

The adjoining kitchen and dining space is set up for both ease and occasion. Grey stone tiles distinguish the culinary zone, where clean-lined cabinetry and a central island keep things purposeful. Hanging pendant lights lend warmth, while a wooden table for six and a built-in bar ensure the space is as suited to casual coffees as it is to hosting.

Completing the experience: a private roof terrace offers a rare opportunity to take in London's skyline from one of its most coveted addresses.



“

Cornicing and column radiators nod to the home's past, while monochrome artwork and sculptural lighting add a more modern rhythm.



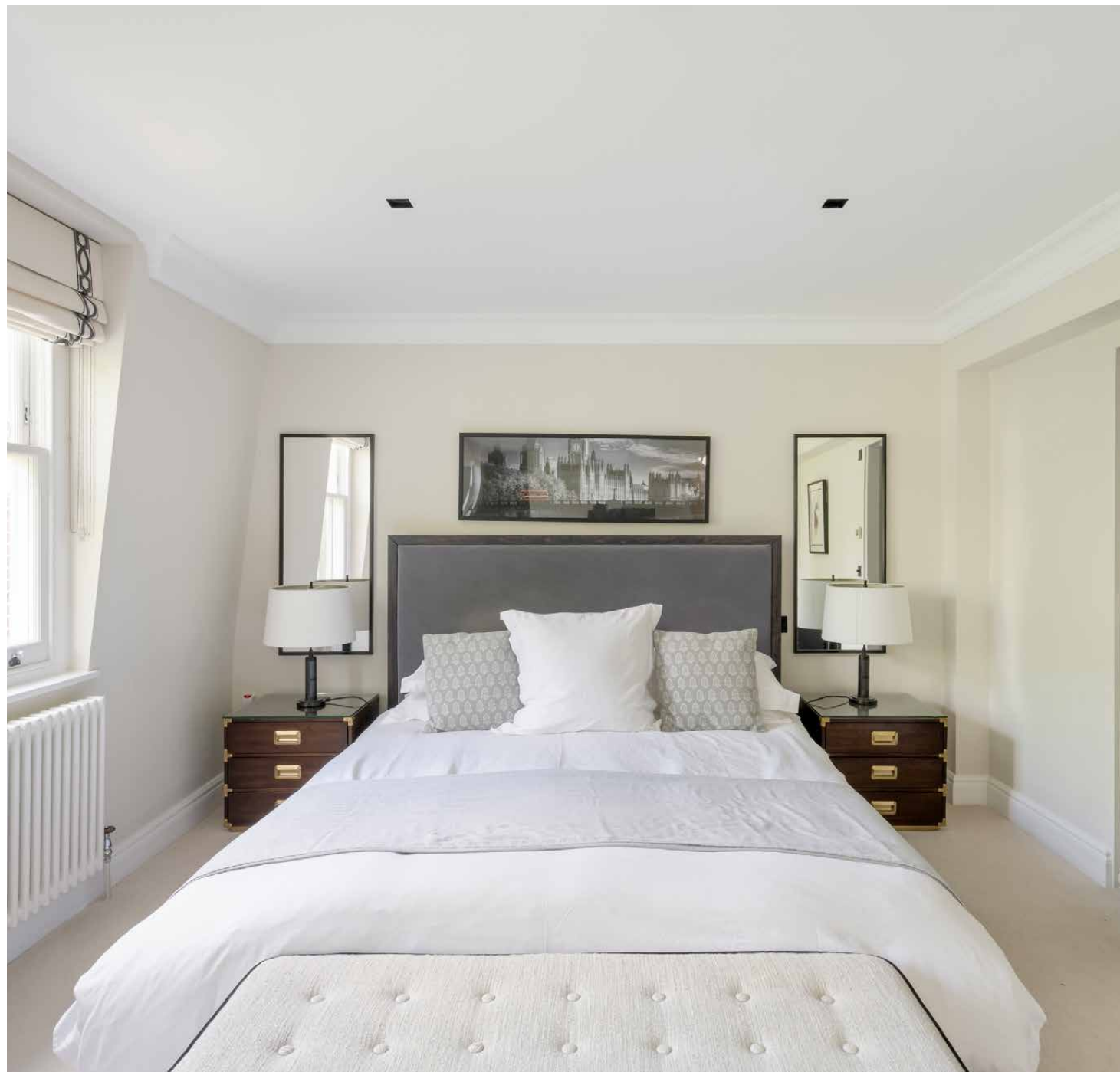








Upstairs, the principal bedroom suite feels hushed and restful. Soft carpet, neutral finishes and custom wardrobes bring texture and order, while the en suite bathroom is lined in oversized marble tiles – with a rainfall shower and deep-set bathtub for unwinding. A second en suite bedroom offers floor-to-ceiling storage and a similarly pared-back feel, while a third southeast-facing bedroom is bright and restrained.







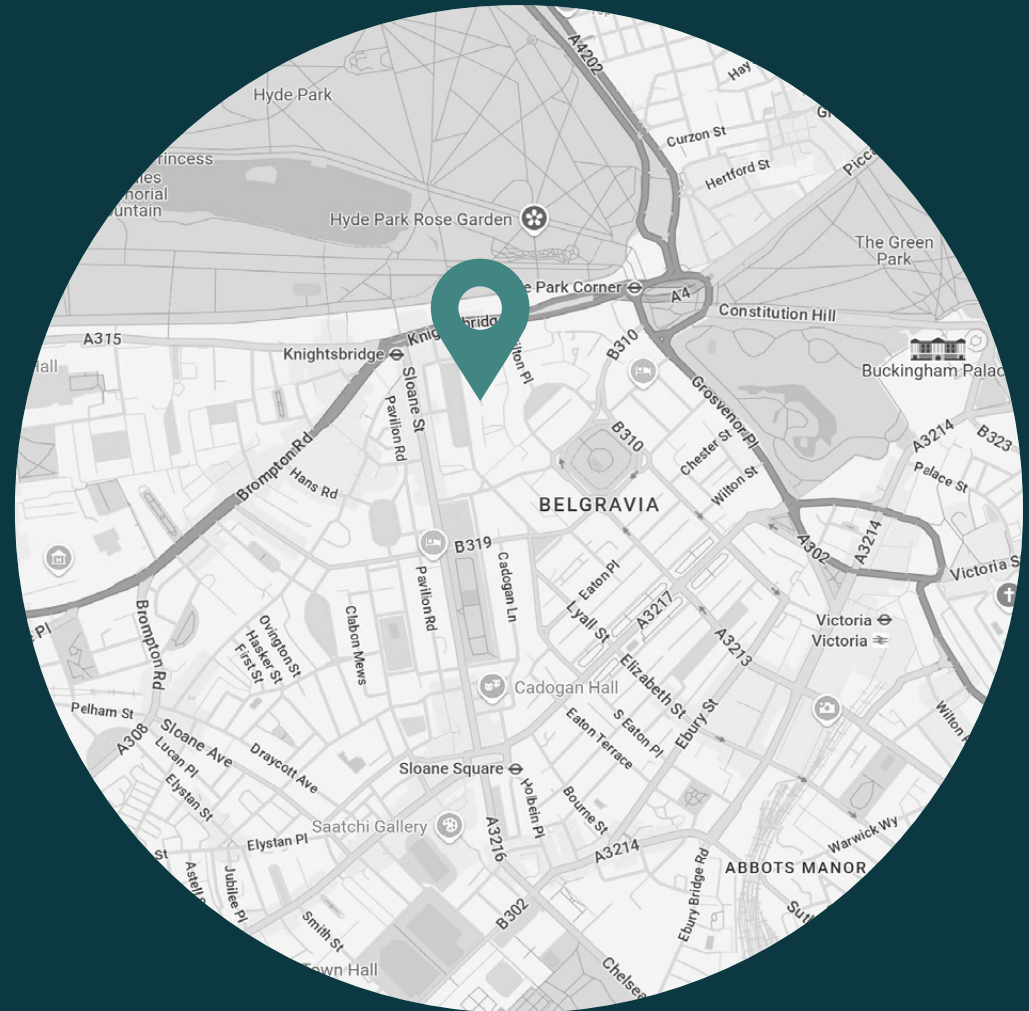




LOCATION

Tucked between Hyde Park and Sloane Square, Lowndes Square is one of Knightsbridge's most prestigious settings – a peaceful backdrop with world-class amenities on its doorstep.

Stroll to Harvey Nichols in under two minutes or explore the boutiques lining Brompton Road. Refuel at Zuma London for refined Japanese flavours, Sale e Pepe for a classic Italian feel or Mosimann's – one of the world's most prestigious private dining clubs. For international labels and independent flair, Sloane Square is under 15 minutes on foot. Hyde Park offers a burst of greenery, while nearby galleries and members' clubs complete the neighbourhood's refined rhythm.



PROPERTY HIGHLIGHTS

- Open-plan kitchen, dining and reception room
- Principal bedroom suite
- Guest bedroom suite
- One further bedroom
- Home office
- Laundry room
- Roof terrace
- Cloakroom



Approx. Gross Internal Area = 1547 sq ft / 143.8 sq m

Floor plans are for illustrative purposes only and not to scale. Compliant with RICS code of measuring practice.
Prepared for Domus Stay. Copyright © All Rights Reserved.



Please don't hesitate to get in touch if you have any questions or require any further information.

hello@domusstay.com

+44 (0)20 8168 8880

Domus Stay provides the perfect combination of property, place and personal service for the world's most remarkable people. If you have any questions, or if we can help in any way, please contact us on the above number. Be it about a property you have, a property you want, dates to check or any special requirements you may need, we'd love a chat.

