

domus
stay.

Horbury Crescent

NOTTING HILL

5 Bedrooms, 4 Bathrooms
For 10 guests





This sprawling five-bedroom house to rent is awash with industrial-tinged design, courtesy of 3W Architects.

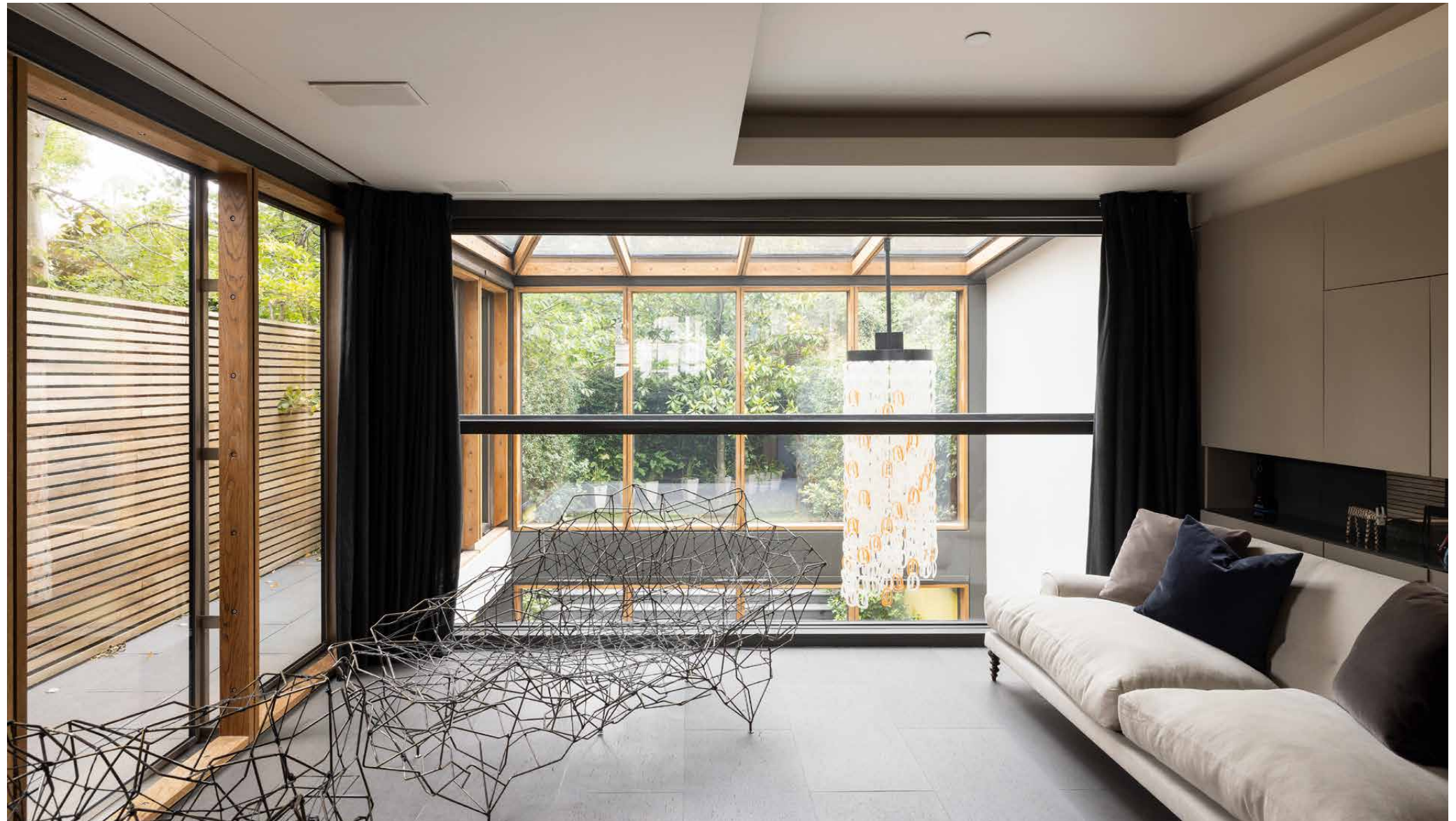
Period design finds a contemporary rhythm at Horbury Crescent – a five-bedroom home arranged over five levels. From the street, its stucco frontage and porticoed entrance read classically Victorian. Inside, the narrative shifts with interiors that lend an industrial edge.

The living spaces

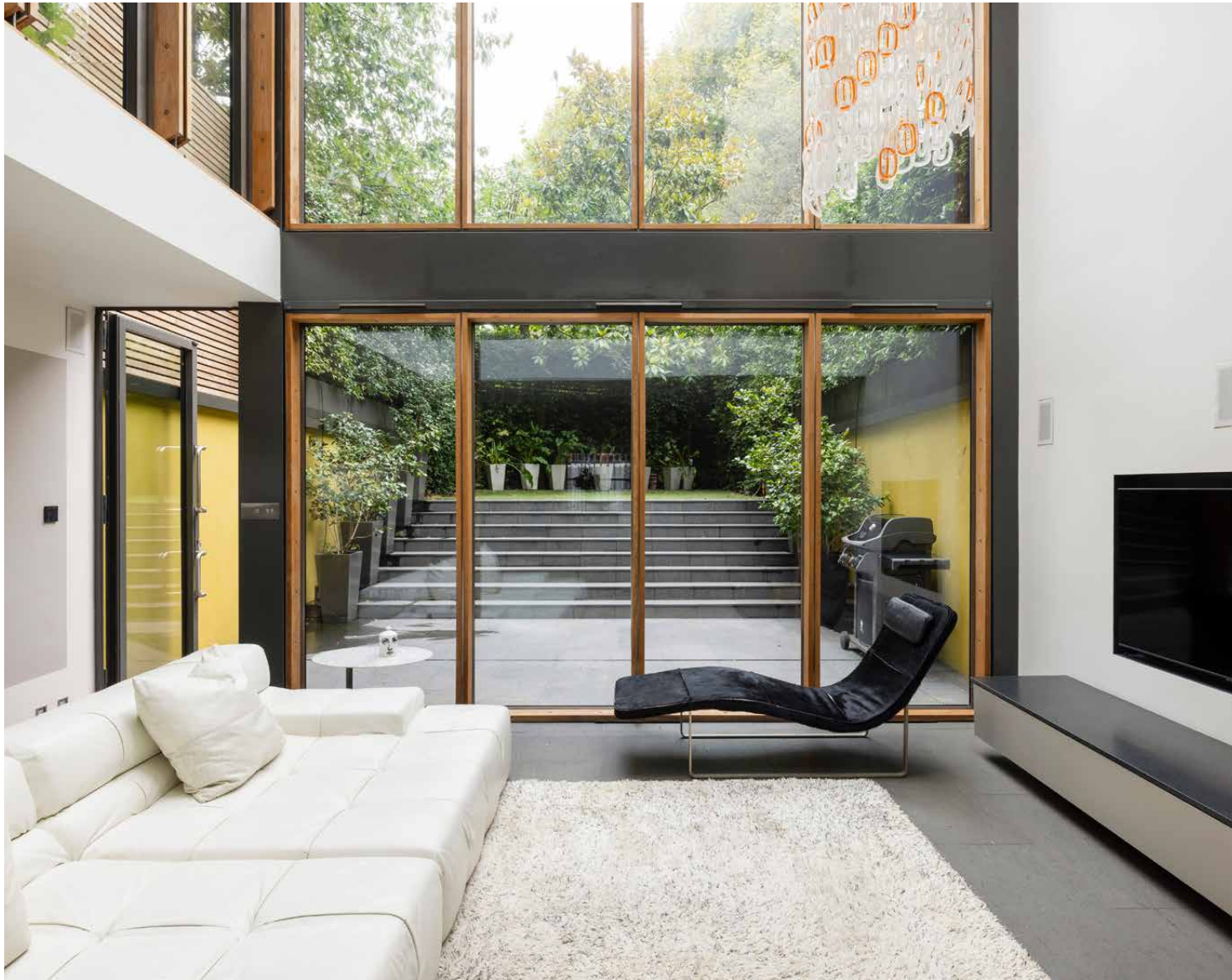
The principal reception room sets the stage: original corning and a black slate fireplace sit in deliberate contrast to a full-height glass wall. Bathed in daylight, the space is intuitively zoned: a relaxed living area at one end, a cocooned media room at the other, complete with projector, surround sound and acoustic panelling. Below, the home's social core unfolds across the lower-ground floor. Italian Basaltina stone grounds the space, lending depth beneath the double-height void. The bespoke Danish kitchen is finely put together: Verde Fantastico quartzite, honed Nero Assoluto granite and fully integrated Miele, Gaggenau, Vola and Quooker appliances.



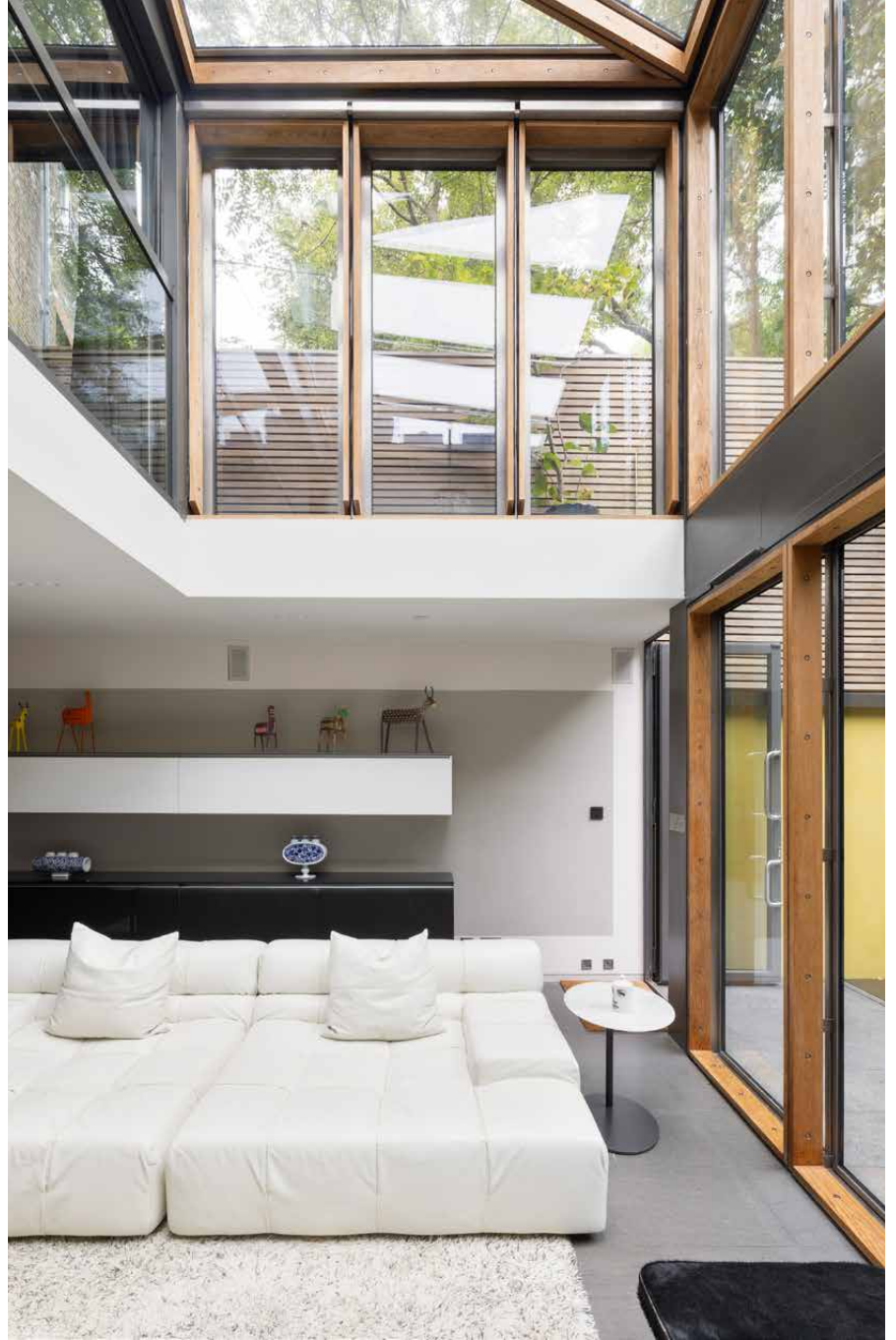


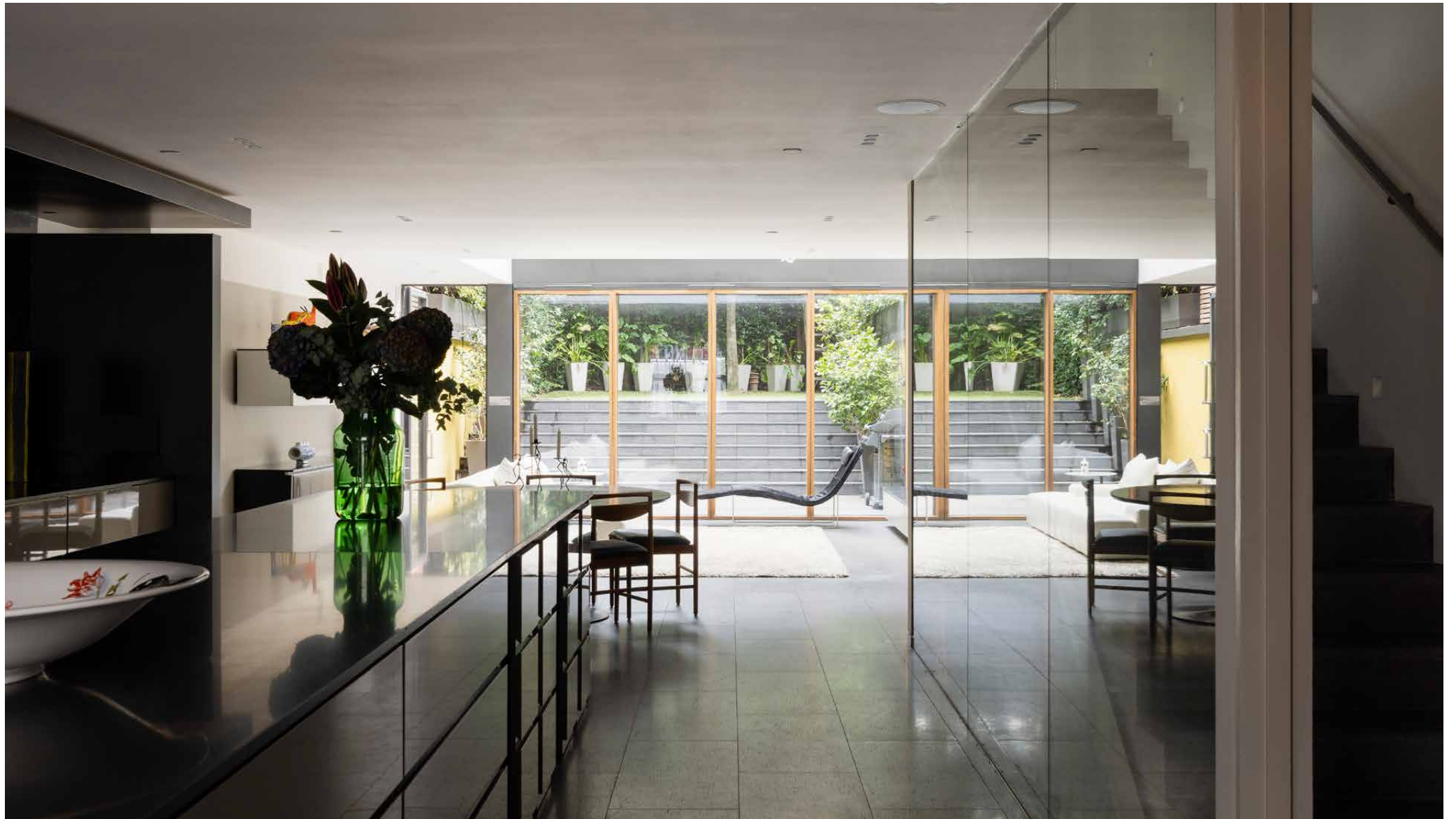




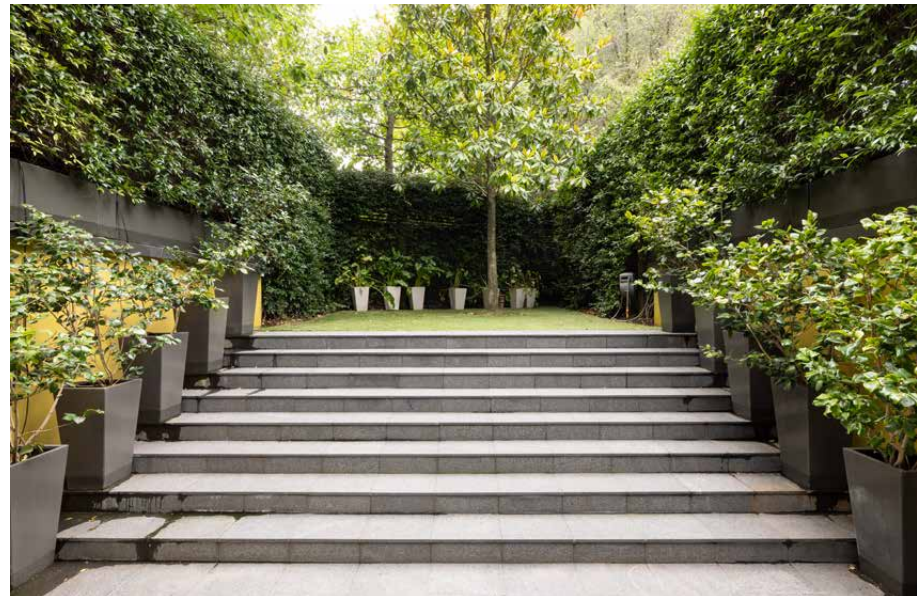


Floor-to-ceiling timber-framed glazing pulls the garden into view, while a vintage 1960s Vistosi chandelier punctuates the volume overhead. A feat of engineering sits to the rear, where a mechanical extension can be lowered into the basement – transforming the space into an open-air setting for warmer months. Outside, the garden is calm and contained, split between patio and a raised lawn wrapped in mature planting.









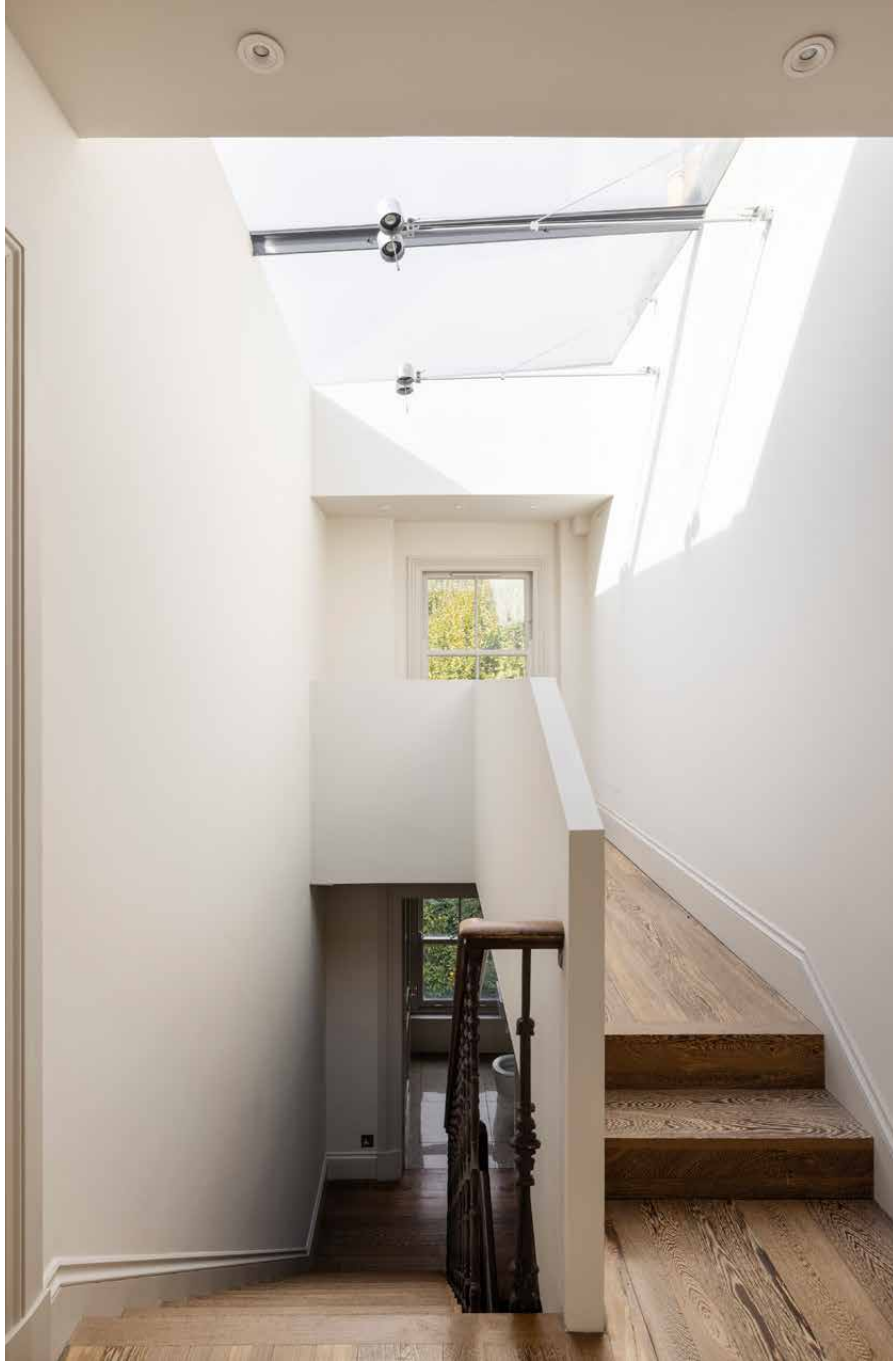




Bedrooms & bathrooms

Upstairs, the entire first floor is devoted to the principal suite. Wenge wood floors, decorative corning and an antique fireplace nod to the home's origins, while a dedicated dressing area leads through to a bathroom finished in Verde Fantastico quartzite, with a double shower and bespoke vanity. Four further bedrooms are arranged across the upper levels, each restrained in tone and served by three additional bathrooms, finished in a mix of Bisazza mosaics, white ceramics and a sculptural freestanding bath.





The neighbourhood

With Notting Hill's best spots on your doorstep, you're at the centre of the action at Horbury Crescent. Start your day with a workout at SoulCycle, then head for brunch at local favourite Farm Girl. Groceries are best from Sally Clarke's or Notting Hill Meat + Fish Shop, with Westbourne Grove and Portobello Road set with high-end and vintage boutiques to explore. Celebrate special occasions at three-Michelin-starred Core by Clare Smyth or more casual dining inspired by Grecian culture at Zephyr – both a short walk away.

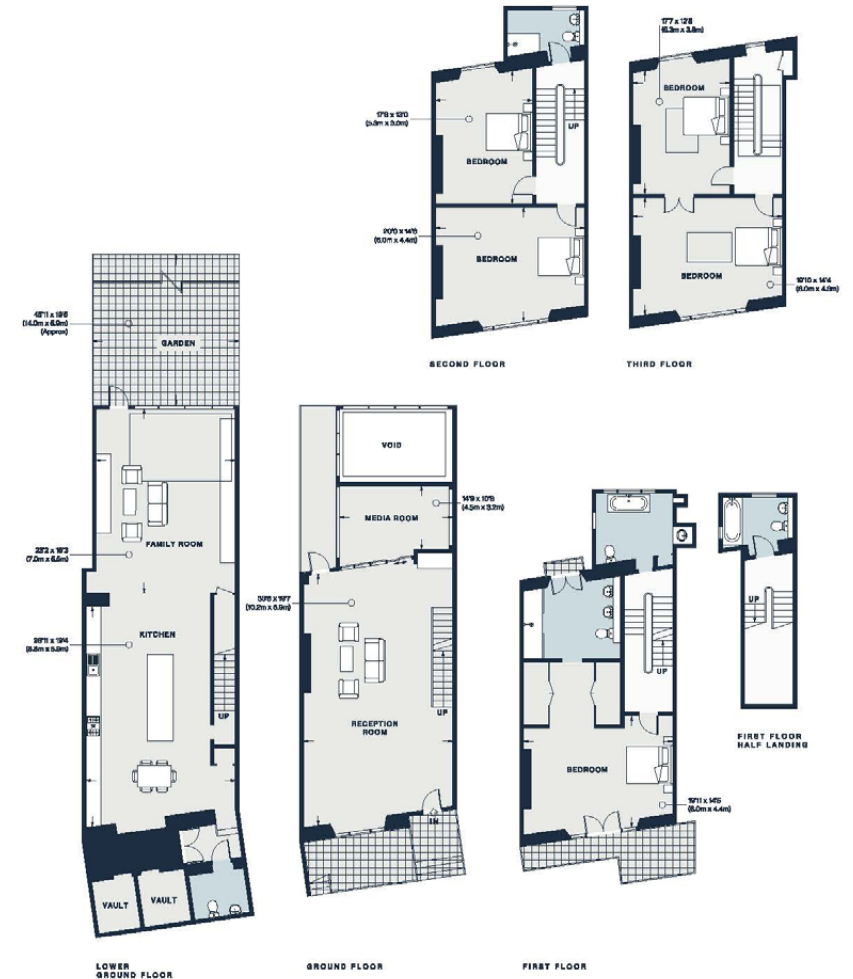




Property features

- Designed by 3W Architects
- Reception and media room
- Open-plan kitchen, dining and living room
- Principal bedroom suite with dressing room
- Four guest bedrooms
- Three further bathrooms
- Additional WC
- Private garden
- Royal Borough of Kensington and Chelsea

Approx. 4394 sq ft / 408.3 sq m



Lower Ground Floor = 1154 sq ft / 107.2 sq m
Ground Floor = 816 sq ft / 75.8 sq m
First Floor = 765 sq ft / 71.1 sq m
First Floor Half Landing = 195 sq ft / 18.1 sq m
Second Floor = 725 sq ft / 67.4 sq m
Third Floor = 658 sq ft / 61.1 sq m
Vaults = 81 sq ft / 7.6 sq m
Approx. Gross Internal Area = 4394 sq ft / 408.3 sq m

Floor plans are for illustrative purposes only and not to scale. Compliant with RICS code of measuring practice.

Guest & concierge services

Our concierge team are here to help guests settle in, seamlessly. Centre court tickets to Wimbledon, Premier League seats with the best views, Savile Row tailors on standby, or a private chef to cater to individual tastes – we aim to elevate every stay.

From the moment of booking with us, each guest has a single point of contact to finesse the details. Our statement spaces are just the starting point – to ensure everyone feels at home, our rates include:

- Weekly housekeeping
- Flexible check-in/out
- Luxury linens and Bamford toiletries
- Legal compliance on all our homes
- A personal welcome and arrival essentials
- Unlimited access to guest services and tailored experiences
- Professional inventory inspection before and after every stay
- Access to a curated portfolio of sole agency properties



domus stay.

Please get in touch if you have any questions
or require any further information.

hello@domusstay.com

+44 (0)20 8168 8880

The property particulars are a guide not statements. Descriptions, photographs, and plans are for guidance only. The Property is offered "subject to contract and references". No warranties, representations, License or Tenancy is given by Domus Stay. Our full disclaimer together with trading names and our Privacy Policy is shown on our website

© Domus Stay 2025. All rights reserved.

