

domus  
stay.

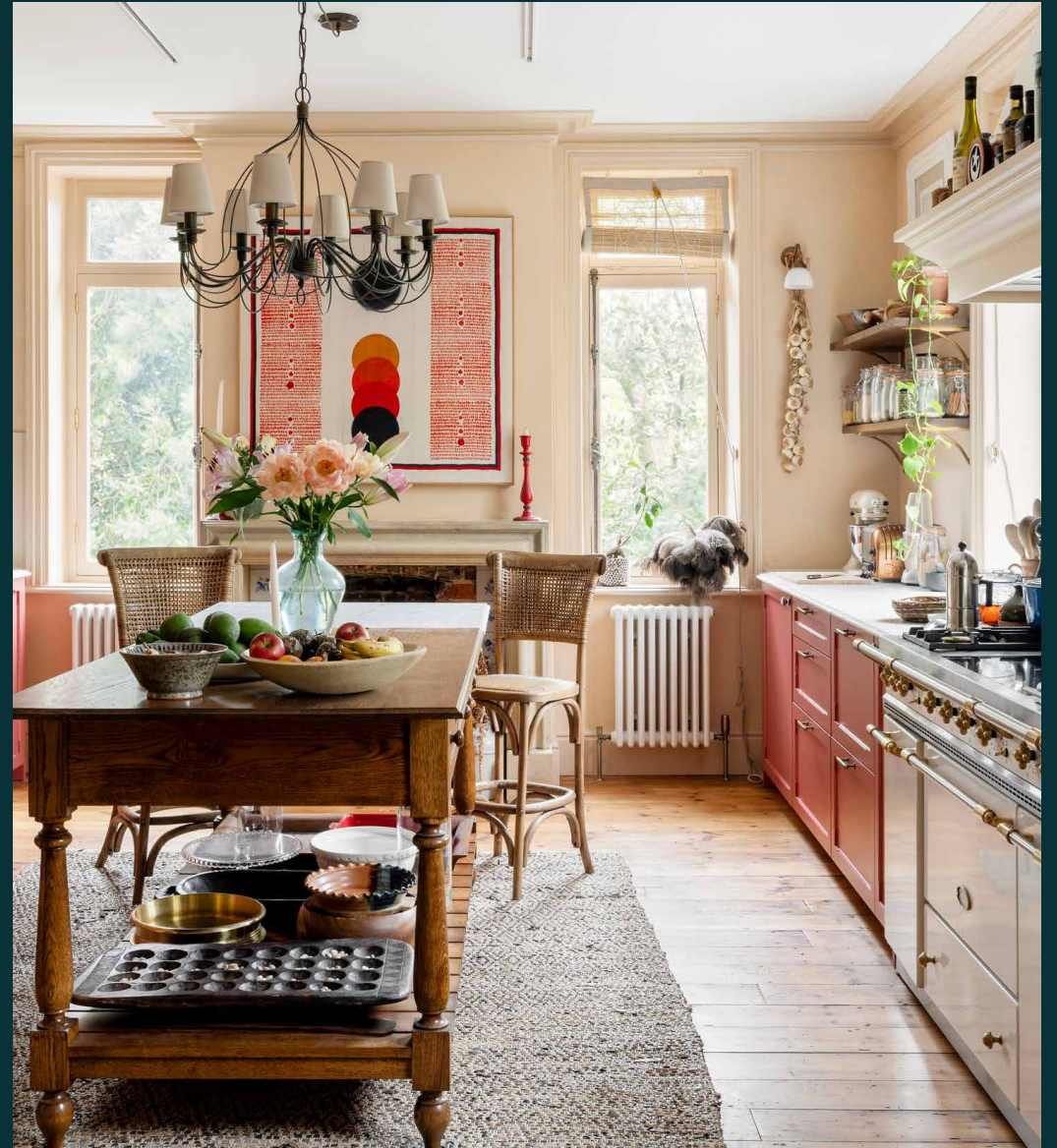
---

## Hollycroft Avenue

HAMPSTEAD

2 Bedrooms, 2 Bathrooms  
For 4 guests

---





In this Hampstead apartment, countrypile charm is given a contemporary twist – rich in pattern, colour and personality.

Warm, characterful and creatively composed, this two-bedroom home reimagines pastoral living through a distinctly modern lens. Eclectic patterns, antique furniture and a carefully balanced colour palette bring flair to every corner – while the nearby green expanse of Hampstead Heath feels like a natural extension of the countrypile atmosphere.

## The living spaces

This open-plan space invites slow mornings, long conversations and easy evenings — backdropped by vintage pieces and layered textiles inspired by the owners' Asian heritage and African upbringing. A library ladder hints at shelves filled with well-thumbed books, while a reupholstered antique George Smith sofa creates inviting places to unwind.

The living room centres around a French Louis XV-style marble chimneypiece, while sculpture by Chelenge and Robert Glen, alongside paintings by Waseki Maori and Jebet, add a gallery-like quality to the interiors. Original windows and restored floors keep the home's heritage esteem within mind.



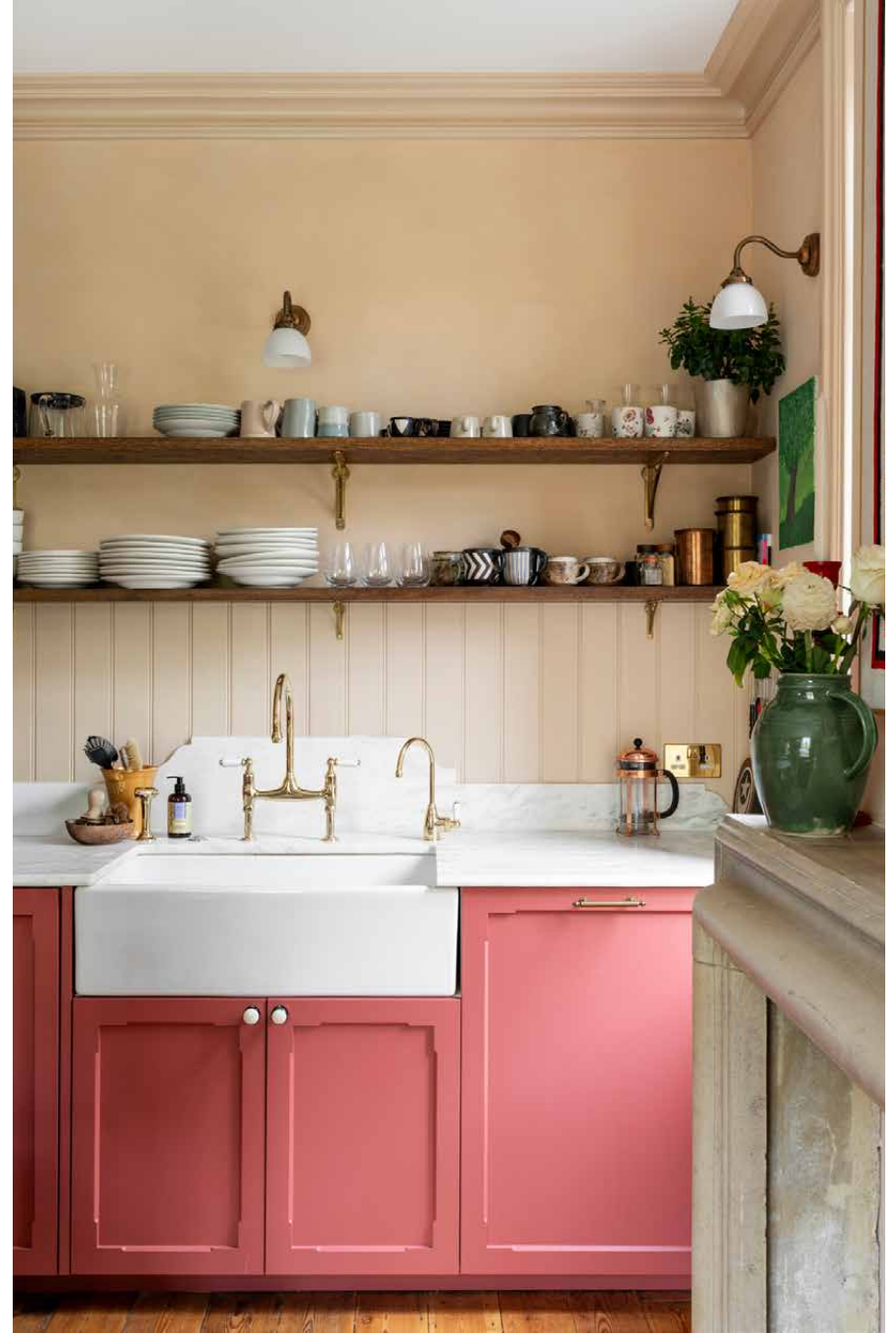


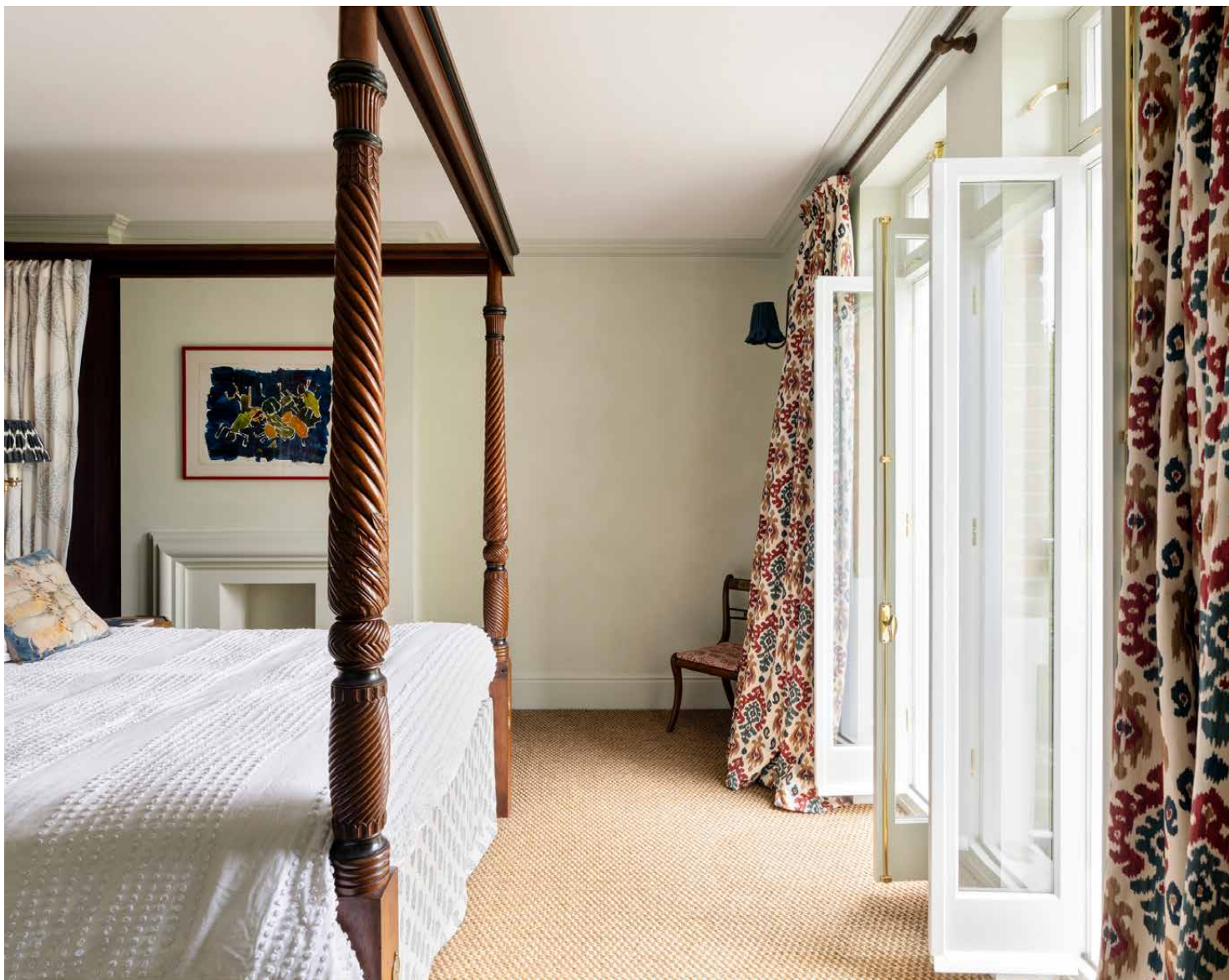


## Kitchen & dining

At the heart of the home is the kitchen — designed with entertaining and cooking in mind by one of the owners, a professional chef. From the restored timber flooring to the antique Bath stone fire surround, the space balances rustic warmth with contemporary detailing: a Shaws double sink is paired with Perrin & Rowe brassware and an instant hot water tap, while the convivial dining area is anchored by an 1820s Gillow's dining table surrounded by eclectic upholstered seating. Serving as the eye-catching functional showpiece, the handmade burgundy Lacanche range cooker is suited to all manner of culinary creativity.







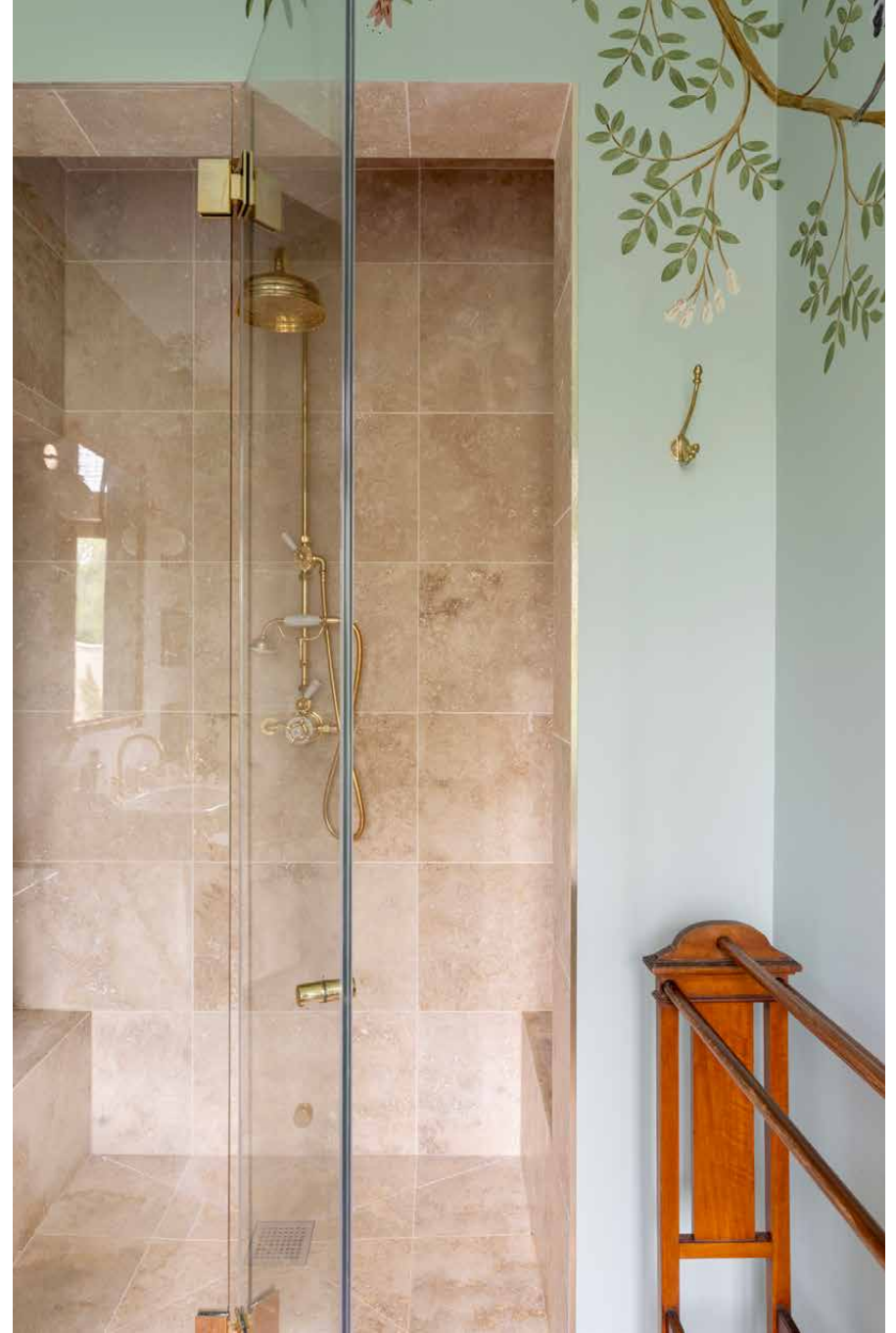
## Bedrooms & bathrooms

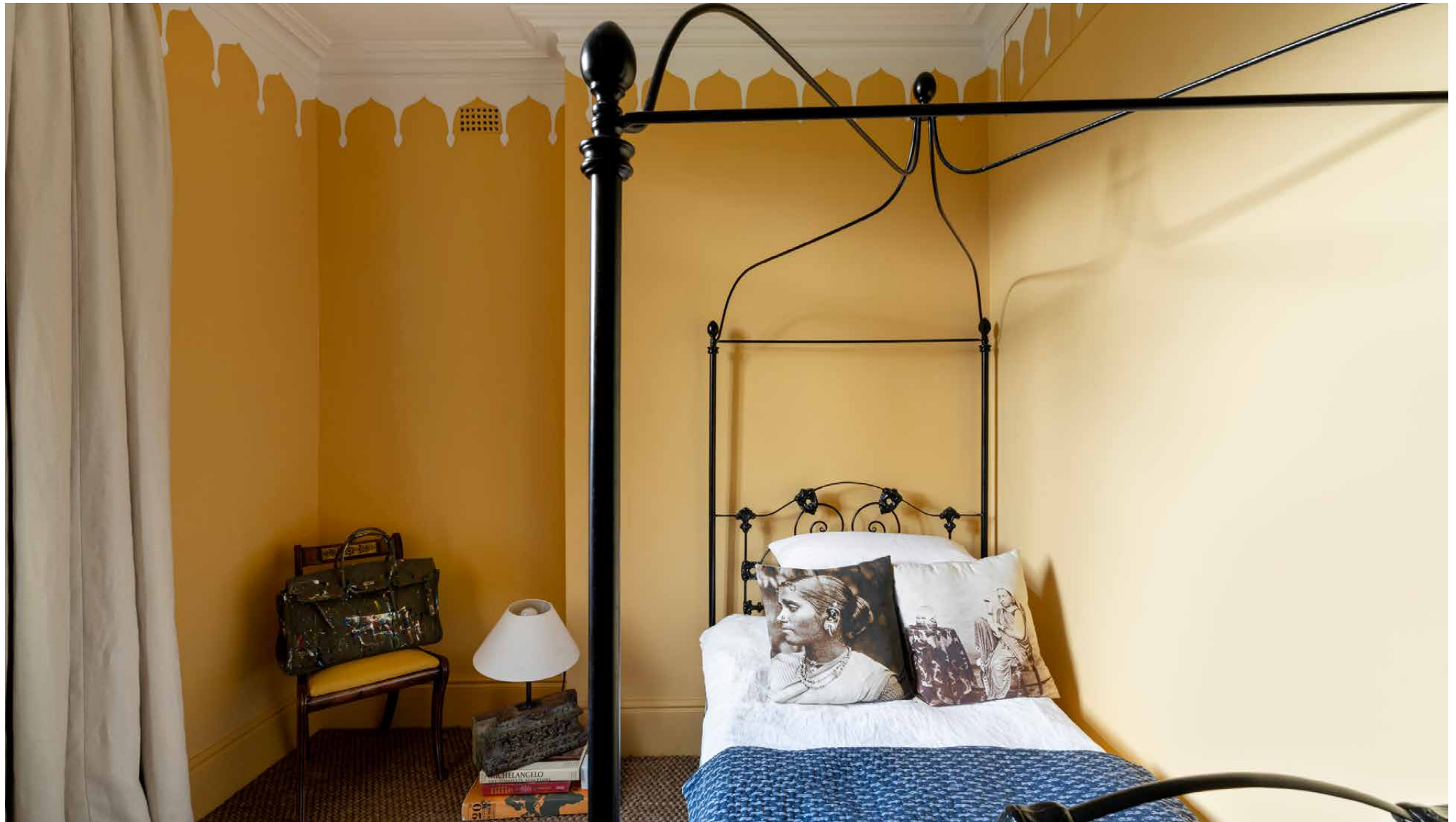
The principal bedroom suite is eclectic and materially engaging. Pale-toned walls and French doors opening to a Juliet balcony create an uplifting atmosphere, while a reclaimed mahogany four-poster bed forms a dramatic focal point. An antique Indian pichwai hangs above with intricate gold-leaf detailing gently reflecting the light.

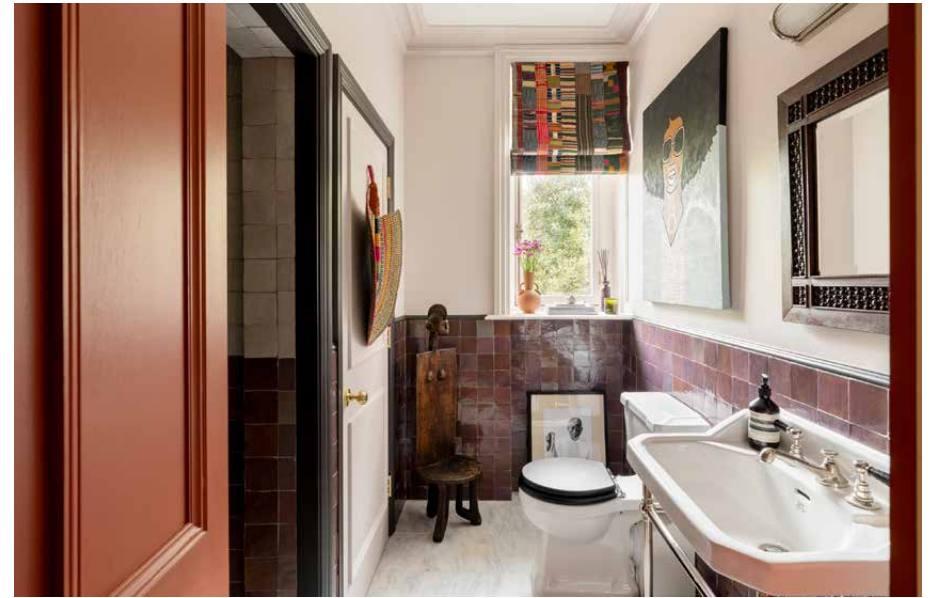
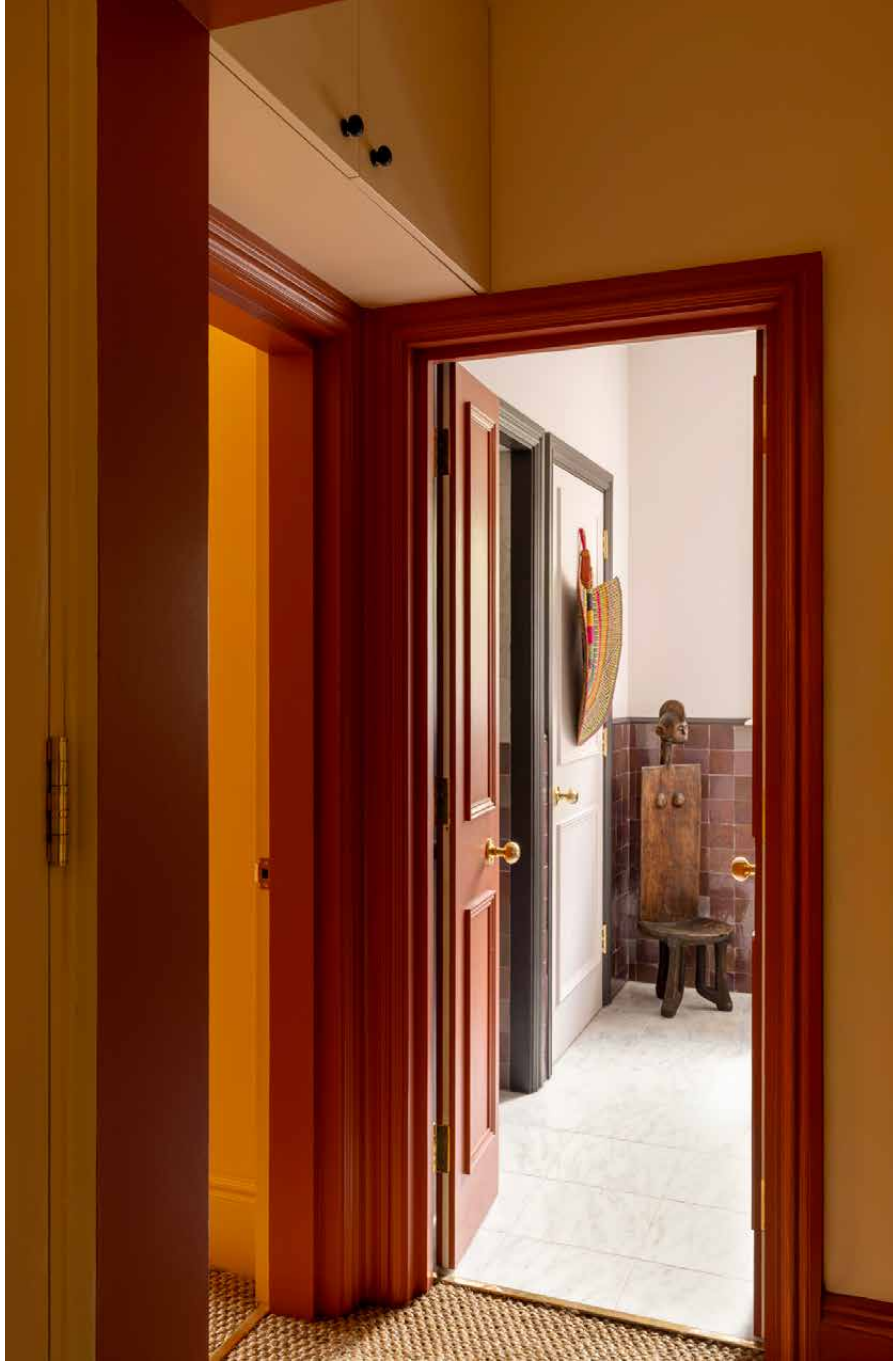
In the en suite bathroom, hand-painted walls and ceilings set a theatrical tone. A striking wooden bathtub - crafted from restored iroko school desks sourced from Retrouvius - sits alongside Lefroy Brooks brassware and terracotta floor tiles with underfloor heating.

The guest bedroom, arranged with an antique iron bed, has a quieter, cocooning feel. It's served by a separate bathroom finished with handmade Moroccan zellige tiles, marble flooring with underfloor heating and nickel brassware. Demonstrating the home's commitment to artful craftsmanship, a Ghanaian Ewe cloth has been repurposed as a distinctive window blind.



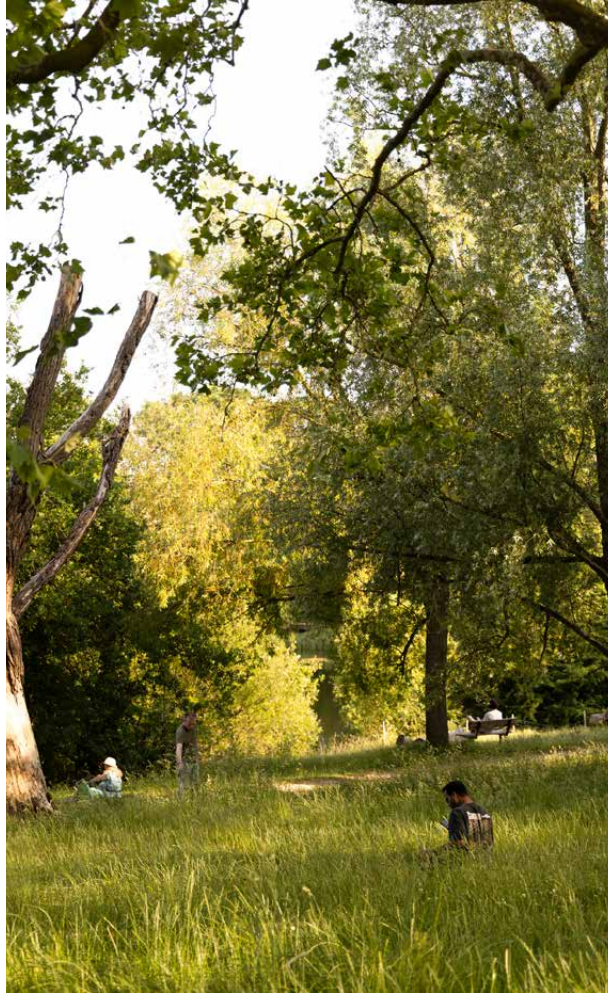


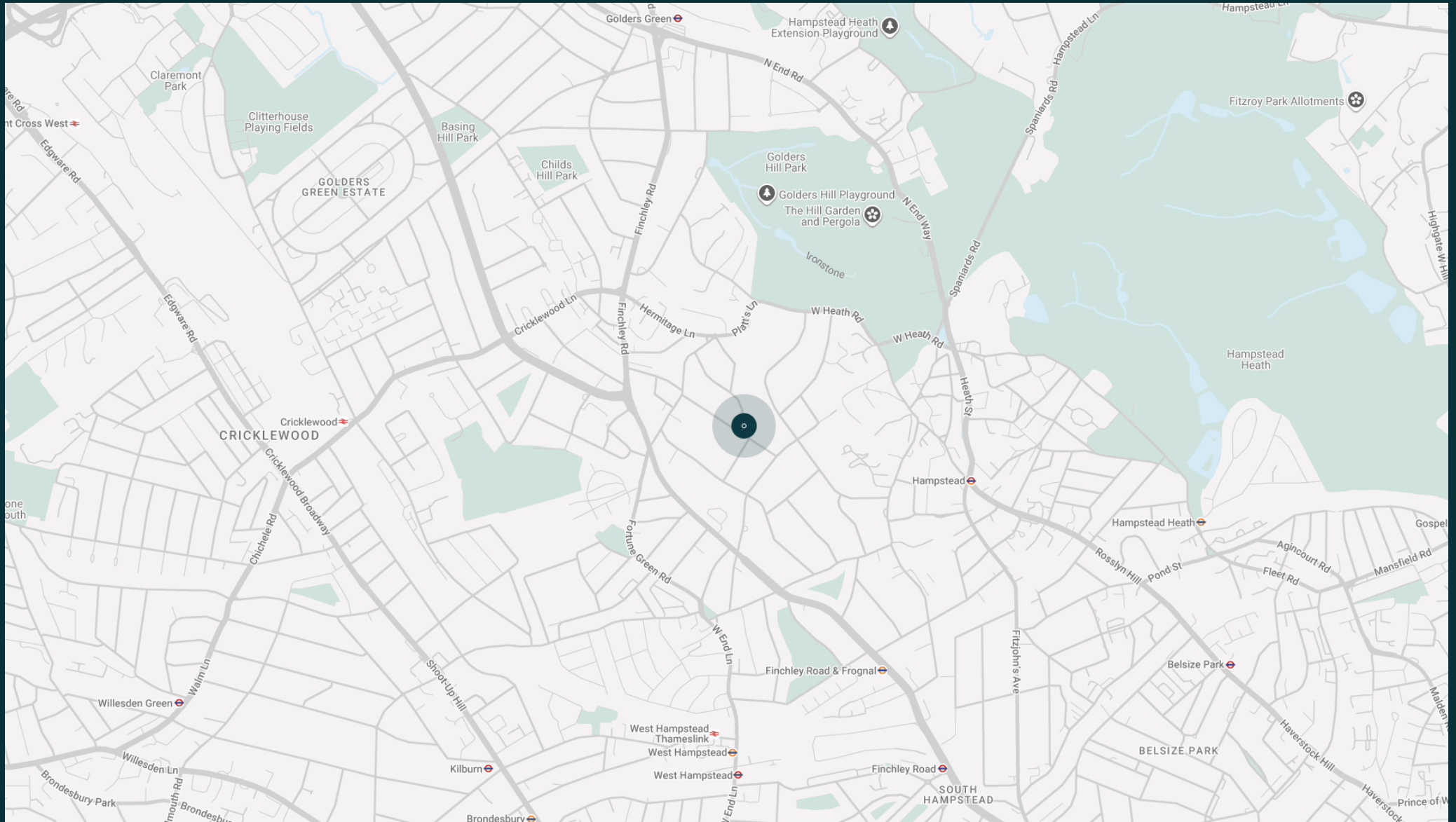




# The neighbourhood

Life at Hollycroft Avenue unfolds at the pace of nearby Hampstead Heath - London's highest and most expansive wild parkland, spanning almost 800 acres. Walk to Kenwood House to explore works by Vermeer, Rembrandt, Gainsborough and Henry Moore, browse the Saturday farmers' market at Parliament Hill or spend afternoons swimming in the Heath's bathing ponds. Local favourite foodie spots include Jin Kichi, Takagiya, London Shell Co and The Wells Tavern. The original Everyman Cinema is a classic neighbourhood institution, while excellent transport links connect easily across the city.

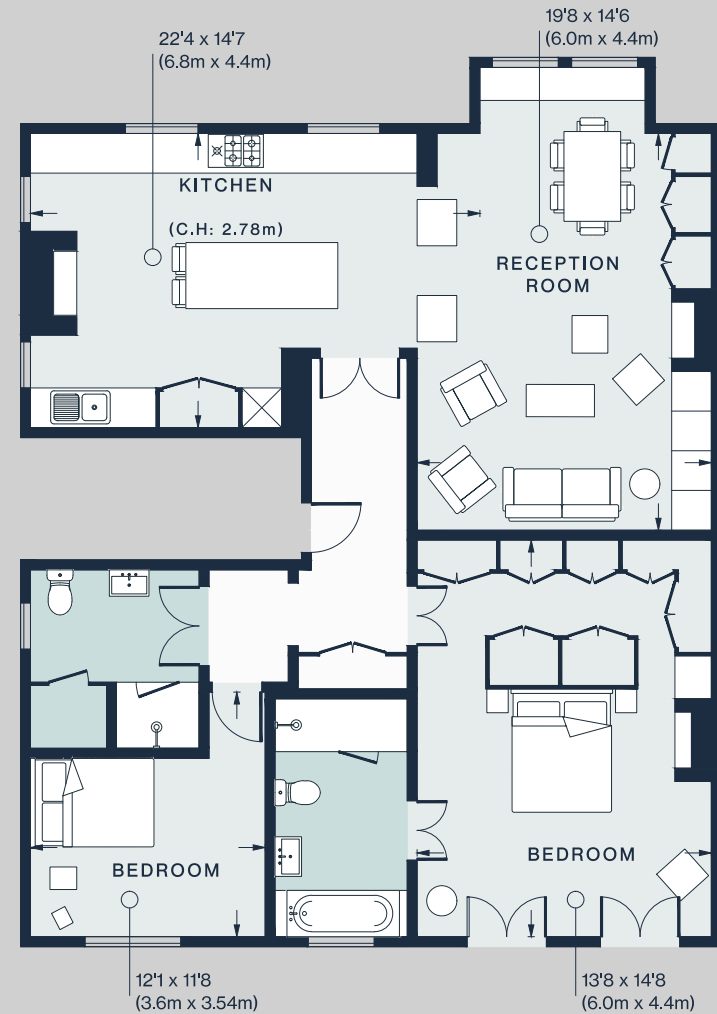




# Property features

- Open-plan kitchen, dining and reception room
- Chef-grade kitchen
- Principal bedroom suite with dedicated dressing area
- Guest bedroom
- Guest bathroom
- Street parking
- London Borough of Camden

Approx. 1,257 sq ft / 116 sq m



Approx. Gross Internal Area = 1,275 sq ft / 118.5 sq m

Floor plans are for illustrative purposes only and not to scale. Compliant with RICS code of measuring practice.  
Prepared for Domus Stay. Copyright © All Rights Reserved.

# Guest & concierge services

Our concierge team are here to help guests settle in, seamlessly. Centre court tickets to Wimbledon, Premier League seats with the best views, Savile Row tailors on standby, or a private chef to cater to individual tastes – we aim to elevate every stay.

From the moment of booking with us, each guest has a single point of contact to finesse the details. Our statement spaces are just the starting point – to ensure everyone feels at home, our rates include:

- Weekly housekeeping
- Flexible check-in/out
- Luxury linens and Bamford toiletries
- Legal compliance on all our homes
- A personal welcome and arrival essentials
- Unlimited access to guest services and tailored experiences
- Professional inventory inspection before and after every stay
- Access to a curated portfolio of sole agency properties



# domus stay.

Please get in touch if you have any questions  
or require any further information.

[hello@domusstay.com](mailto:hello@domusstay.com)

+44 (0)20 8168 8880

The property particulars are a guide not statements. Descriptions, photographs, and plans are for guidance only. The Property is offered "subject to contract and references". No warranties, representations, License or Tenancy is given by Domus Stay. Our full disclaimer together with trading names and our Privacy Policy is shown on our website

© Domus Stay 2025. All rights reserved.

