

domus
stay.

Hearth House

THE COTSWOLDS & COUNTRY

6 Bedrooms, 5 Bathrooms
For 11 guests





Thoughtfully arranged for family life, this 17th-century house to rent is set in Tetbury's gently rolling countryside.

A Grade II listed home at the heart of the English countryside, Hearth House balances period elegance with characterful, considered design.

Beyond a sweeping private driveway and timeworn stone pillars, the house rises with quiet confidence, its façade softened by climbing wisteria and framed by mature trees. Inside, a rich layering of pattern, artwork and textiles creates interiors that honour the building's heritage, preserving the spirit of a 17th-century house. Outside, a tennis court and stables complete the grounds.







The living spaces

Traditional detailing meets a confident use of colour across the living areas, creating spaces that feel both inviting and composed. Through the front door, flagstone floors lead into the dining room, where classical Dutch artworks sit against rich-hued wallpaper. Cornicing crowns the ceiling, while a stone fireplace anchors the space and tall sash windows frame views of the garden. As evening falls, drawing the curtains creates an intimate setting around the 12-seater dining table.

In the formal sitting room, the same garden outlook is paired with inky blue walls and patterned drapery. A central fireplace and book-lined shelves lend a sense of quiet refinement.

Towards the rear of the house, the atmosphere softens. The snug unfolds beneath a vaulted ceiling with exposed beams where a log burner, skylights and sash windows, create a space designed for slower moments. A study, similarly styled and complete with its own fireplace, offers a more private setting for work.













The kitchen

Country living comes into focus in the kitchen. Soft cream Shaker cabinetry sits beneath a vaulted ceiling, centred around a generous island. A black Everhot oven adds warmth, while a well-appointed pantry supports easy entertaining. A breakfast table with banquette seating looks out to the garden, and on warmer days, doors open directly onto the patio.

Exposed beams continue into the adjoining dining area, where Neisha Crosland's Berry Flower wallpaper adorns the walls. Hardwood floors lead to a log-burning stove set beneath an original stone mantel, alongside a relaxed dining table.





Bedrooms & bathrooms

The same refined feel continues upstairs into the sleeping spaces. Delicate wallpapers cover the walls, paired with striking fabrics and pops of colour. The principal suite features an en suite bathroom, where a statement bathtub sits beneath a full-height sash window, framing views across the garden and fields beyond.

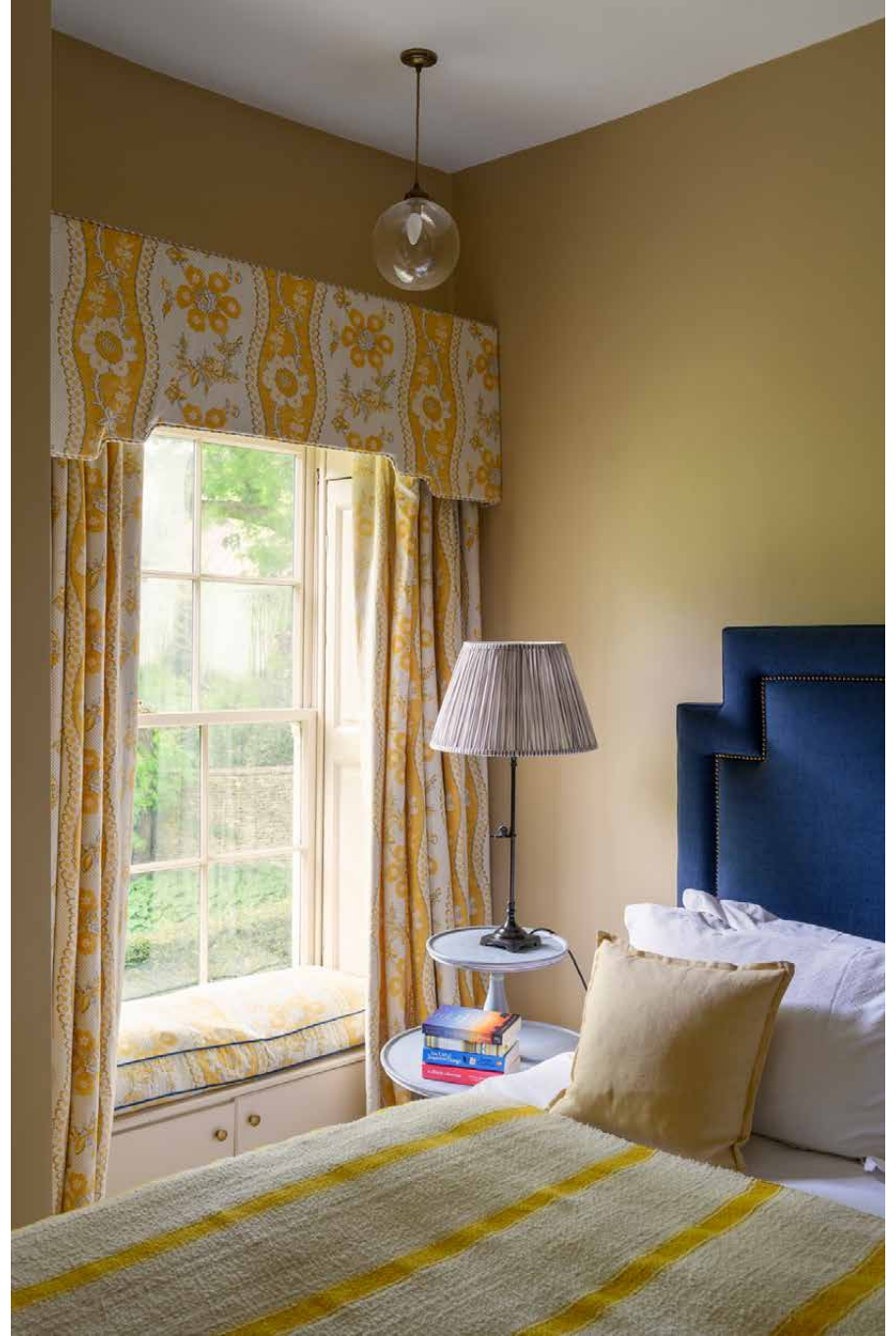
Five further bedrooms are served by accompanying bathrooms, some with showers set beneath vaulted ceilings, others with more traditional farmhouse-style bathtubs.













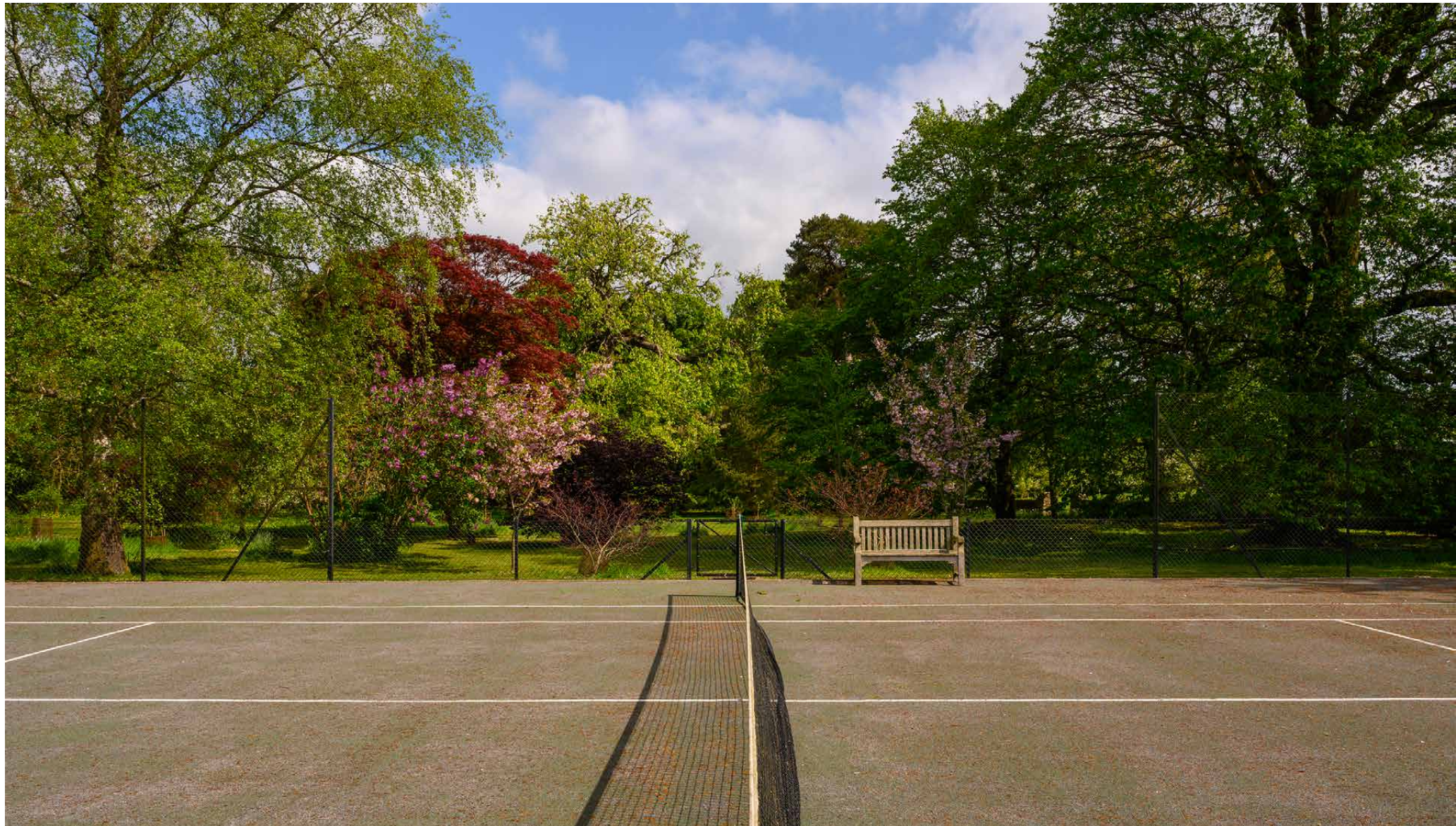




Outside space

Stepping outside, seven acres of garden unfold. Formal box hedges draw the eye down an expansive lawn, past a sundial and into the surrounding fields. A pond, edged by carefully tended planting and mature trees, forms a tranquil focal point, while the wider grounds resemble a private arboretum of established oaks and rare evergreens. Beyond, a tennis court and stables await.

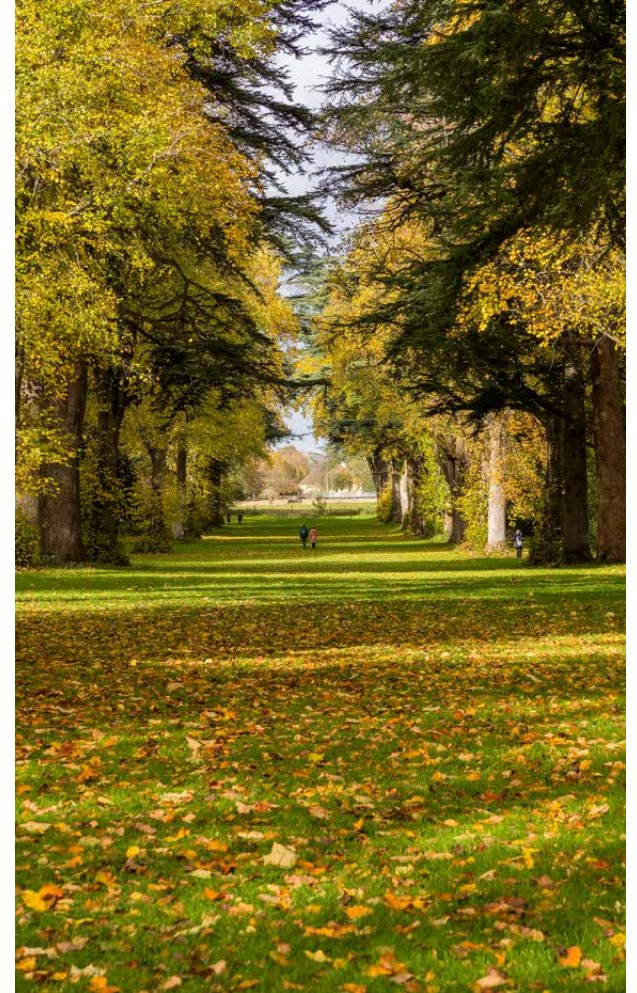






The surroundings

Positioned on the southern edge of the Cotswolds, Hearth House is immersed in an Area of Outstanding Natural Beauty defined by rolling countryside and picture-book villages. Nearby Tetbury offers a historic market town setting, known for its Cotswold stone architecture, independent boutiques and antique shops. A short drive away, Highgrove House – the private residence of Charles III – opens its gardens to visitors. Alternatively, Malmesbury, regarded as England's oldest borough, presents a rich mix of historic landmarks and cultural life.



Hearth House
(DRIVING TIMES)

30MINS 25MINS 20MINS 15MINS 10MINS 5MINS 5MINS 10MINS 15MINS 20MINS 25MINS 30MINS

TETBURY

WESTONBIRT
ARBORETUM

GATCOMBE PARK

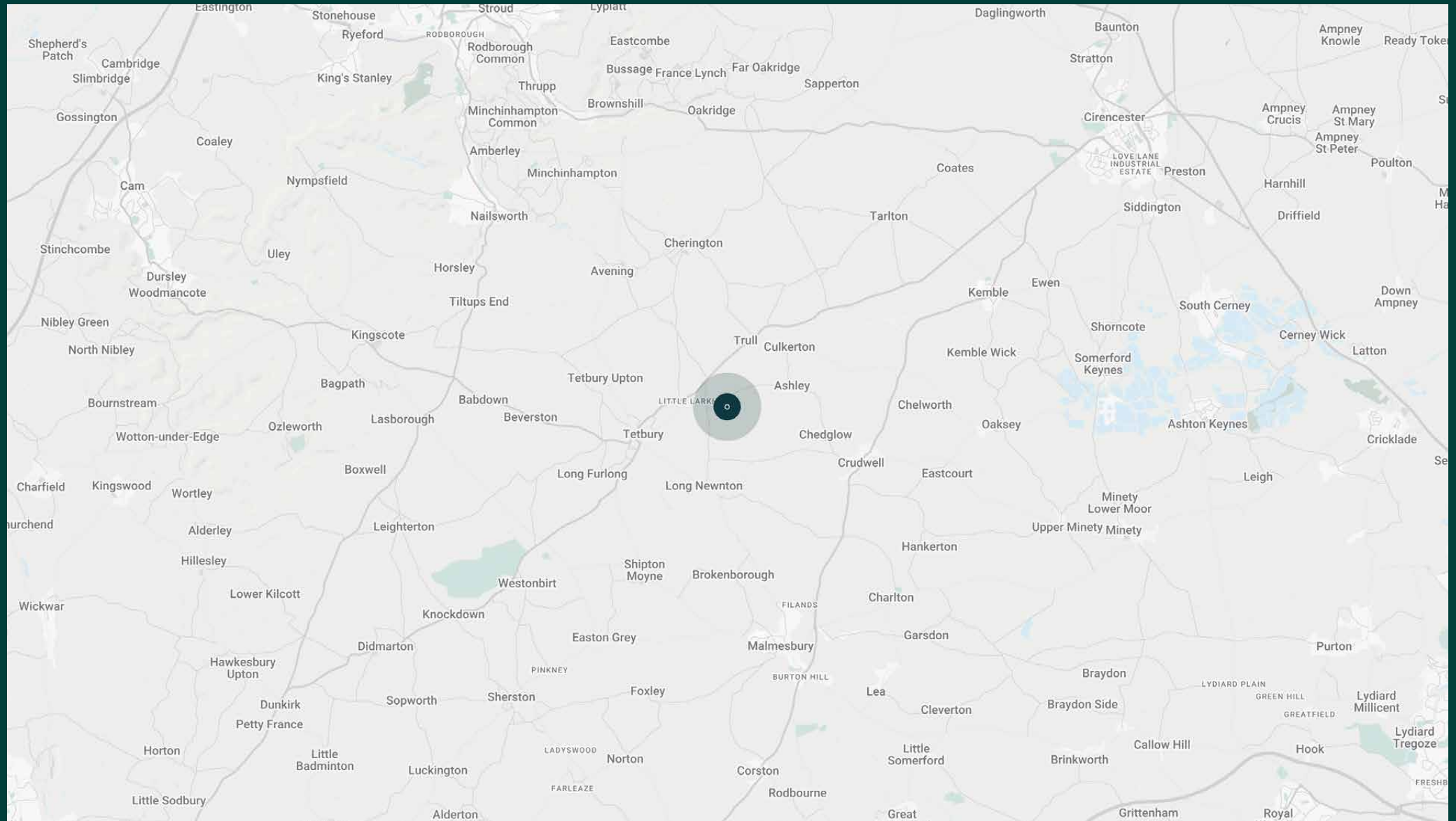
COTSWOLD
AIRPORT

CIRENCESTER

STROUD

COTSWOLD WILDLIFE
PARK & GARDENS

KEMBLE



Property features

- Open-plan kitchen and dining area with vaulted ceiling
- Breakfast room
- Formal dining room
- Drawing room
- Snug
- Six bedroom suites
- Home office
- Utility room
- Large south-facing private garden
- Tennis court
- Barbecue
- Arboretum

What's included?

- Personal check-in
- Weekly housekeeping (for stays over seven nights)
- Customisable amenities and activities available to add



Guest & concierge services

Tennis coach or yoga instructor. Tables at renowned dining institutions, tickets to sporting or music events, and tours of the surrounding countryside: we're here to ensure stays are nothing short of exceptional. Working alongside our carefully selected partners, we put tastemakers and health and wellbeing experts at our guests' fingertips.

Our statement spaces are just the starting point – to ensure everyone feels at home, our rates include:

-
- Housekeeping
 - Flexible check-in/out
 - Luxury linens and toiletries
 - Legal compliance on all our homes
 - A personal welcome and arrival essentials
 - Unlimited access to guest services and tailored experiences
 - Professional inspection before and after every stay
 - Complete discretion



domus stay.

Please get in touch if you have any questions
or require any further information.

hello@domusstay.com

+44 (0)20 8168 8880

The property particulars are a guide not statements. Descriptions, photographs, and plans are for guidance only. The Property is offered "subject to contract and references". No warranties, representations, License or Tenancy is given by Domus Stay. Our full disclaimer together with trading names and our Privacy Policy is shown on our website

© Domus Stay 2025. All rights reserved.

