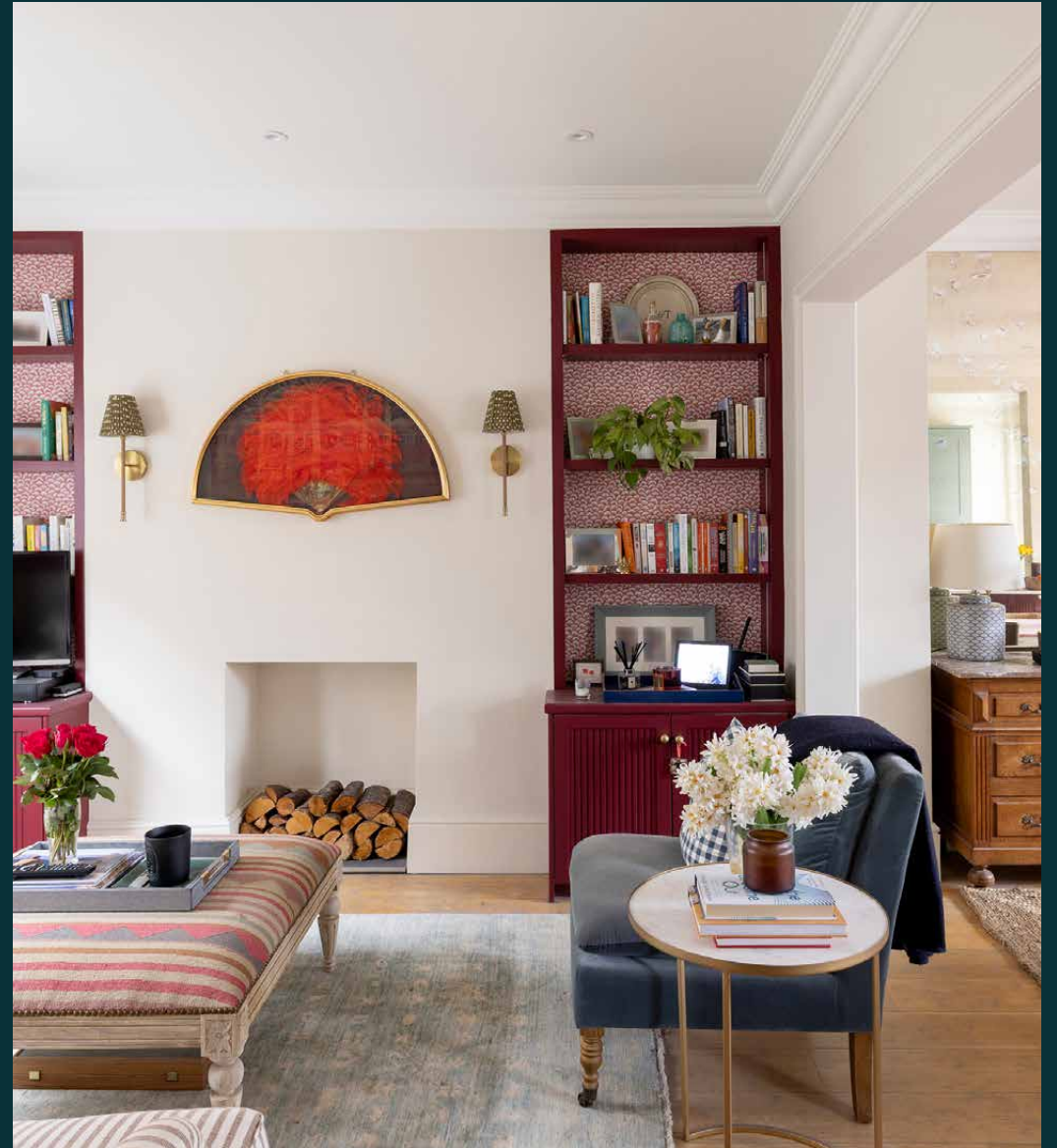


domus
stay.

Garway Road

NOTTING HILL

2 Bedrooms, 2 Bathrooms
For 4 guests





Colour and craftsmanship bring warmth to this duplex in Notting Hill, moments from the energy of Westbourne Grove.

Creative design takes centre stage at Garway Road. Arranged across two bright floors, this duplex balances calm, neutral backdrops with confident bursts of colour. Tall sash windows flood the interiors with light, while the boutiques, restaurants and cafés of nearby Westbourne Grove sit just around the corner.



The living spaces

Stairs ascend to the first floor, where living spaces unfold in an easy, sociable sequence. The reception room sets a welcoming tone: beige walls and warm wooden floors form a soft canvas for artwork, while deep burgundy cabinetry offers space to store the essentials. Thoughtful furnishings invite settling in, whether for lazy afternoons or cosy evenings at home.

From here, the layout flows through to the dining room. Framed by tall windows and dressed in soft pink tones, it's a cheerful, light-filled space centred around a table for six. Just beyond, the kitchen sits neatly tucked into its own nook. Cabinetry from the Allendale range by Howdens is finished in a gentle teal shade, elevated with brass handles from Touch Ironmongery that lend the space a bespoke feel.









Bedrooms & bathrooms

Upstairs, the bedrooms adopt a more restful palette. The principal suite is defined by calm neutral tones and bespoke integrated storage, alongside an en suite bathroom with a bathtub and marble detailing. A second bedroom echoes the understated approach, served by a neighbouring shower room.

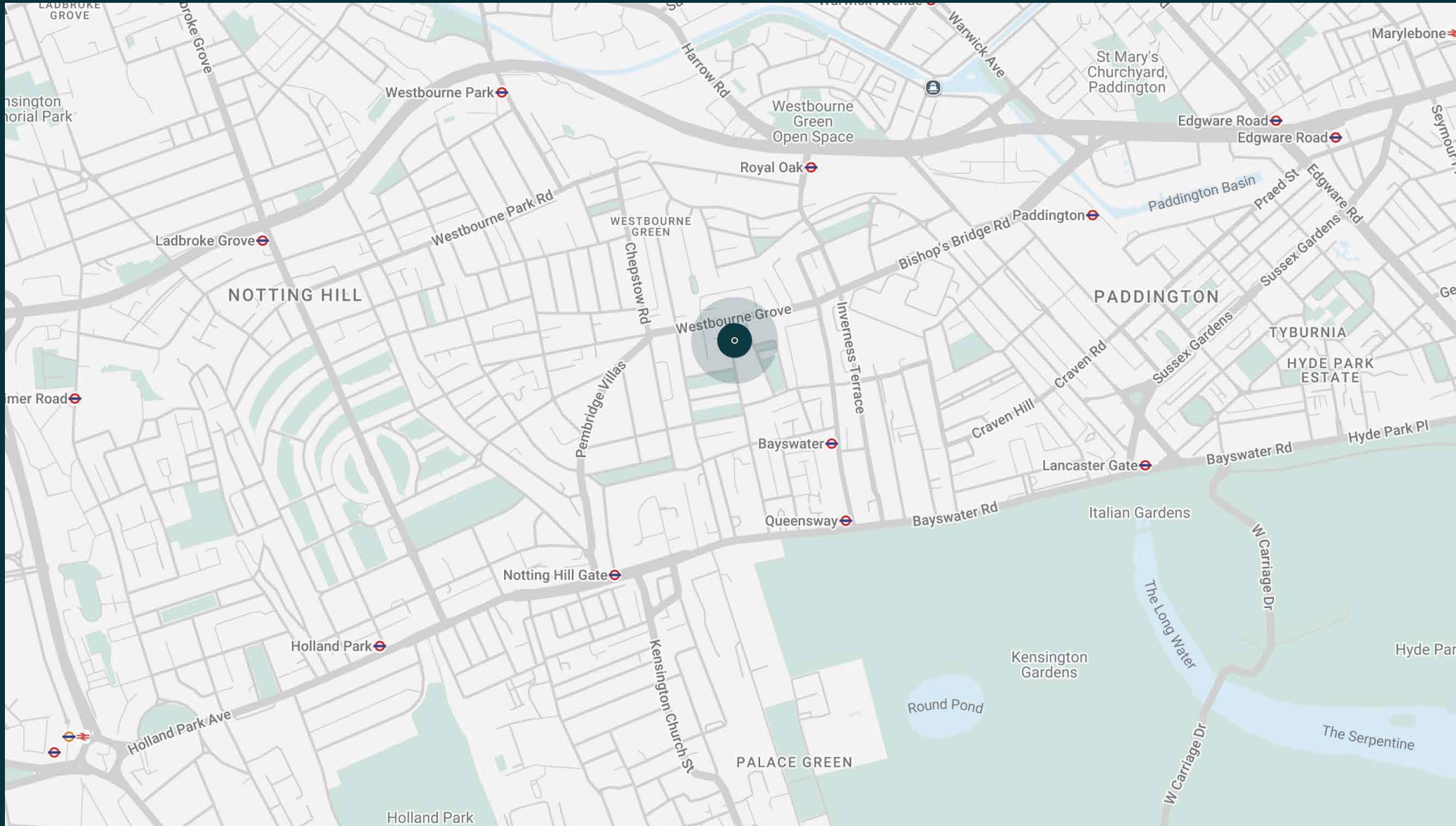




The neighbourhood

Just around the corner from one of Notting Hill's most vibrant and fashionable streets, Garway Road gives you easy access to Westbourne Grove's wealth of boutiques, eateries and amenities. Local produce is best from Ben's, Planet Organic or Daylesford Organic. Favoured brunch spots include Beam, Granger & Co. amongst others. For invigorating workouts, head to 1Rebel or Psyche. It's a short walk to the manicured lawns of Hyde Park – the perfect spot for a summertime picnic.

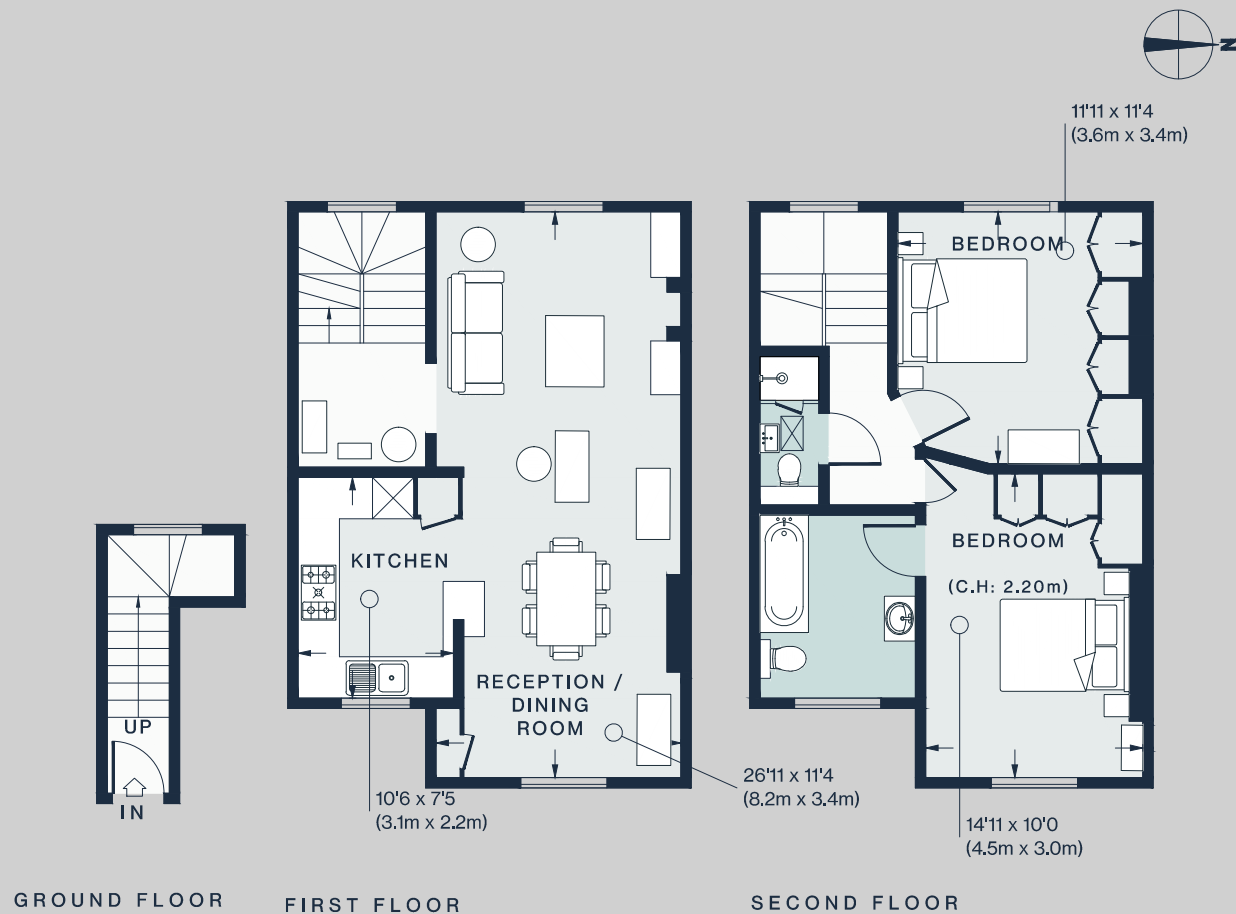




Property features

- Bespoke interior design
- Contemporary kitchen and dining room
- Reception room
- Principal bedroom suite with integrated storage
- Guest bedroom with built-in wardrobes
- Shower room

Approx. 833 sq ft / 77.4 sq m



Approx. Gross Internal Area = 970 sq ft / 90.1 sq m

Floor plans are for illustrative purposes only and not to scale. Compliant with RICS code of measuring practice.
Prepared for Domus Stay. Copyright © All Rights Reserved.

Guest & concierge services

Our concierge team are here to help guests settle in, seamlessly. Centre court tickets to Wimbledon, Premier League seats with the best views, Savile Row tailors on standby, or a private chef to cater to individual tastes – we aim to elevate every stay.

From the moment of booking with us, each guest has a single point of contact to finesse the details. Our statement spaces are just the starting point – to ensure everyone feels at home, our rates include:

- Weekly housekeeping
- Flexible check-in/out
- Luxury linens and Bamford toiletries
- Legal compliance on all our homes
- A personal welcome and arrival essentials
- Unlimited access to guest services and tailored experiences
- Professional inventory inspection before and after every stay
- Access to a curated portfolio of sole agency properties



domus stay.

Please get in touch if you have any questions
or require any further information.

hello@domusstay.com

+44 (0)20 8168 8880

The property particulars are a guide not statements. Descriptions, photographs, and plans are for guidance only. The Property is offered "subject to contract and references". No warranties, representations, License or Tenancy is given by Domus Stay. Our full disclaimer together with trading names and our Privacy Policy is shown on our website

© Domus Stay 2025. All rights reserved.

