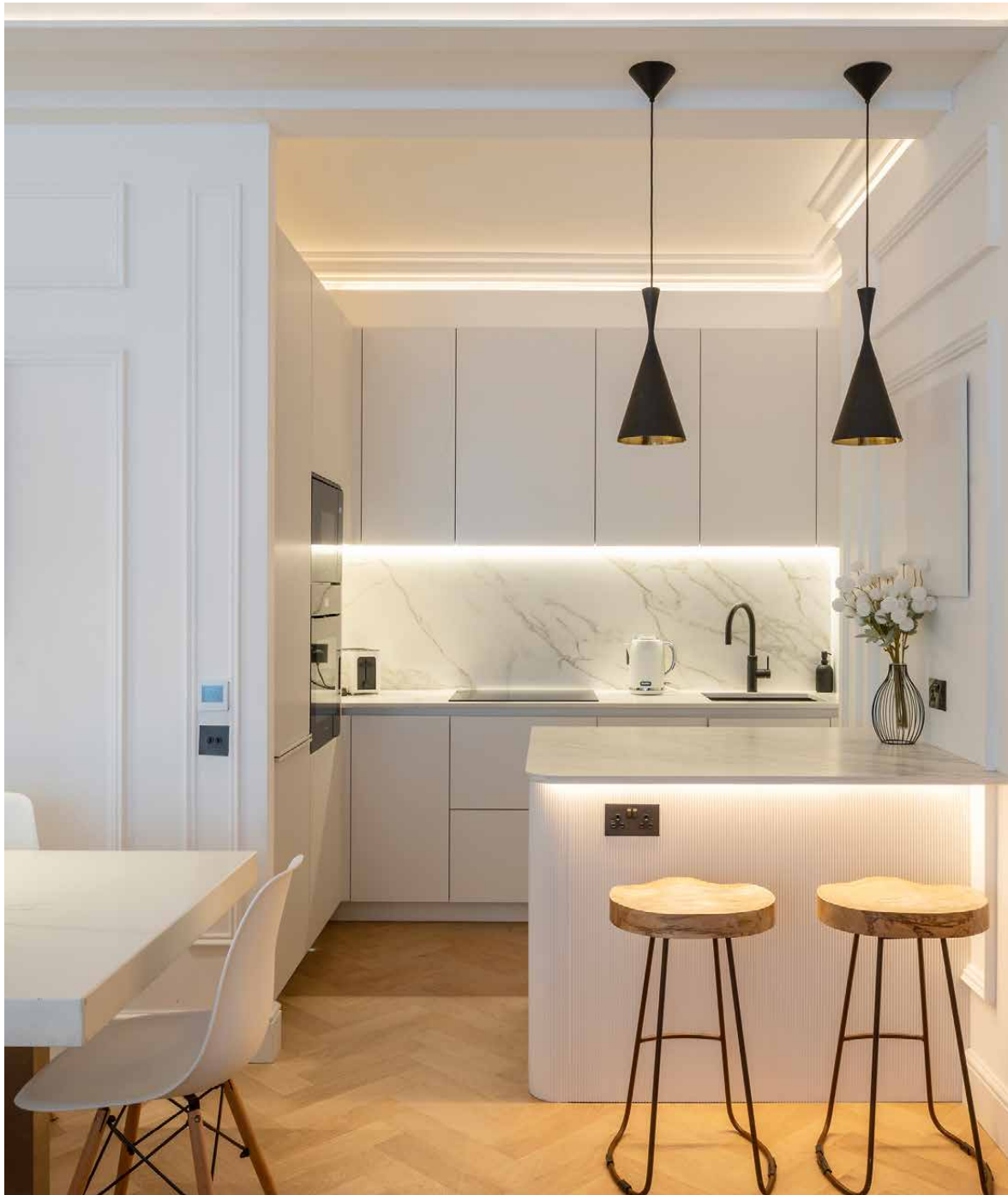

Ennismore Gardens

Knightsbridge SW7

2 Bedrooms, 2 Bathrooms
For 4 guests





An opulent two-bedroom apartment in Knightsbridge. This elegant hideaway pays homage to its prestigious postcode.

Set on the lower level of an elegant period block, an unexpected home is a gallery of timeless design. From the entranceway, expansive fitted mirrors reflect considered design choices. The distinctive aesthetic is defined by recessed lighting, pared-back wainscotting and panelling overhead.

The open-plan kitchen, dining and reception room forms the heart of the home. Sliding doors expand the space or close it off from the hallway. Work up a sweat in the home gym, prepare a meal using Miele appliances then dine at the marble breakfast bar. Alternatively, the dining area provides seating for six.

A dark media wall with gilded detailing adds drama to the room's white monochromatic palette. A bay window with French doors beckons in natural light, creating an uplifting feel.



Herringbone flooring sweeps into the living area. Sink into the boucle sofa and put on a classic film.

“

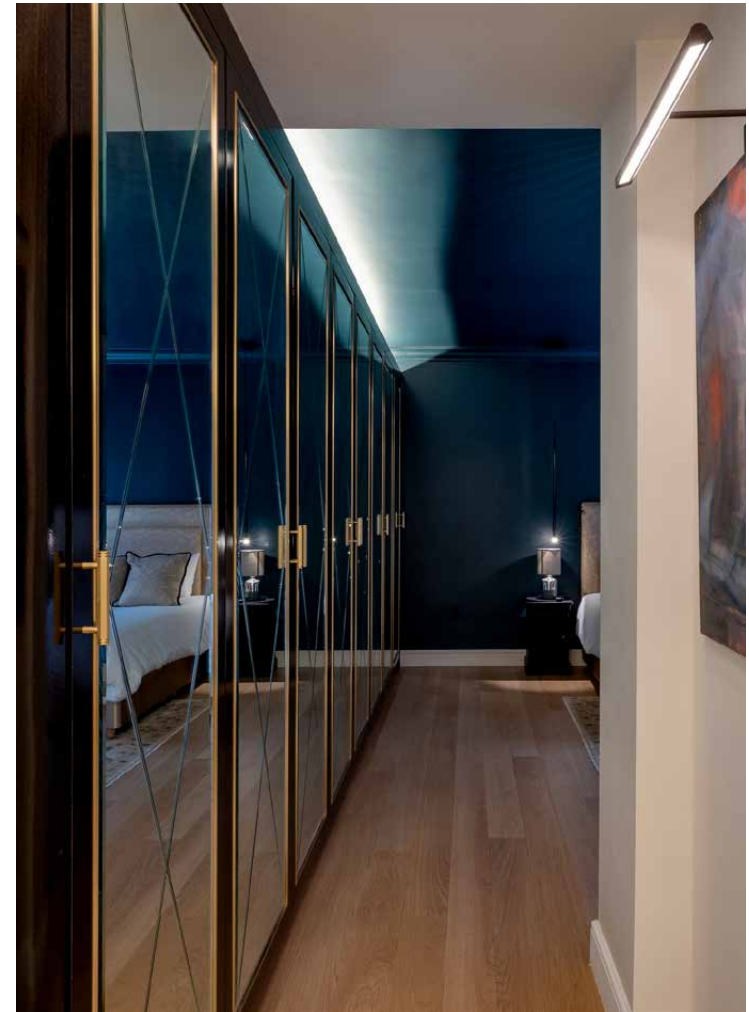
A considered palette of materials and pristine finishes produce a feeling of indulgence.



Double doors grant access to the distinguished principal bedroom suite. Denim blue walls are enlivened by daylight via an expansive skylight and an adjoining patio. The brickwork of a dark fireplace adds rigour. A wall of bespoke joinery provides storage options while the en suite bathroom draws together a countertop basin, freestanding bathtub and a rainfall shower. The guest bedroom suite is a textural sanctum. This space also benefits from courtyard access, thoughtful details and a stylish en suite bathroom.

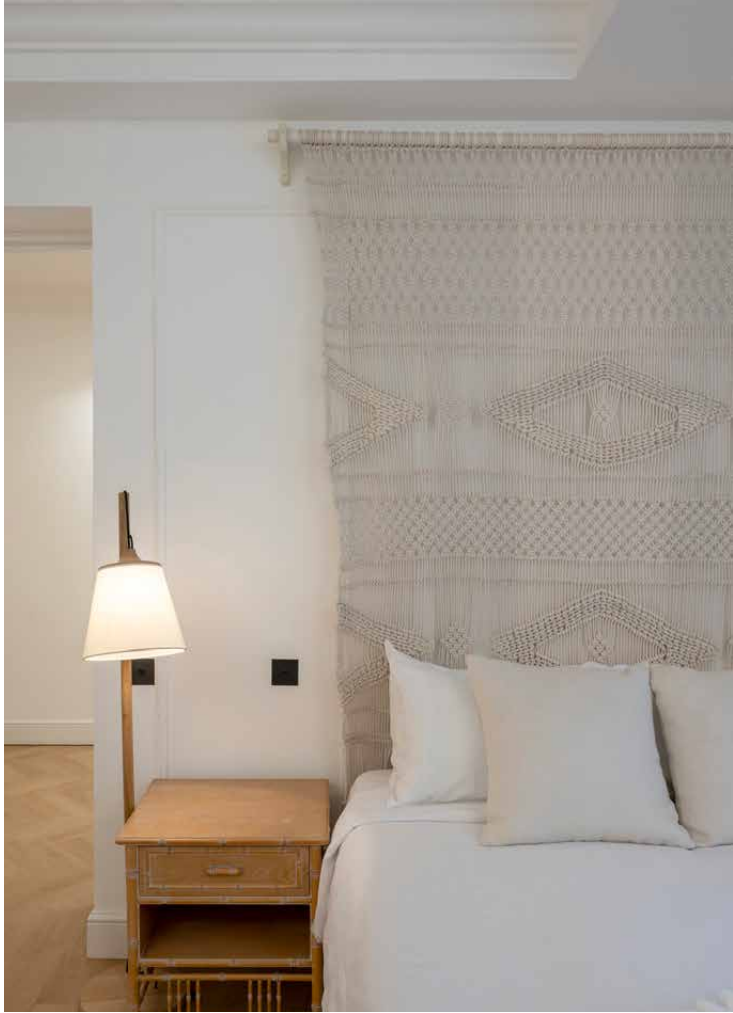














LOCATION

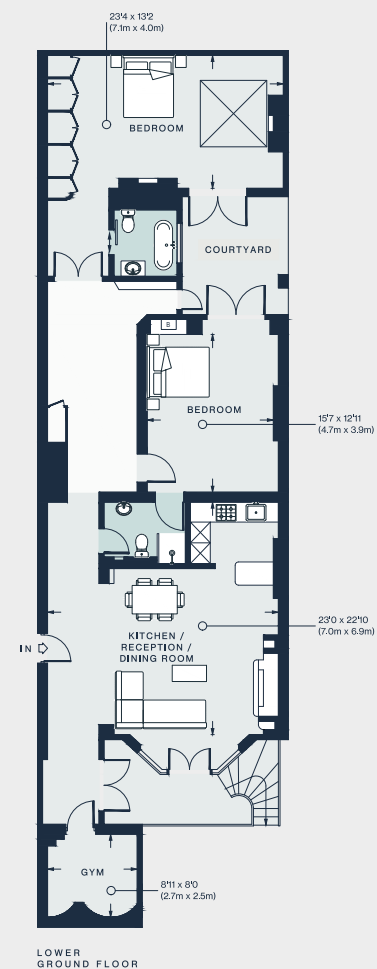
On a handsome street five minutes' walk from Hyde Park, this eye-catching apartment is close to some of London's best attractions and restaurants.

An array of shops are within a short stroll including the city's foremost department store, Harrods. For culture, choose between the V&A Museum and the world-famous Royal Albert Hall. Local Michelin-starred restaurants include Amaya for refined Indian cuisine or Dinner by Heston Blumenthal for molecular gastronomy. Alternatively, dine at Gordon Ramsay's Petrus and enjoy a nightcap at The Alfred Tennyson. For green spaces, choose between Hyde Park and the peaceful oasis of Ennismore Gardens.



PROPERTY HIGHLIGHTS

- Open-plan kitchen, dining and reception room
- Principal bedroom suite
- Guest bedroom suite
- Courtyard patio
- Workspace
- Integrated storage
- City of Westminster



Approx. Gross Internal Area = 1566 sq ft / 145.5 sq m

Floor plans are for illustrative purposes only and not to scale. Compliant with RICS code of measuring practice.



Please don't hesitate to get in touch if you have any questions or require any further information.

hello@domusstay.com

+44 (0)20 8168 8880

Domus Stay provides the perfect combination of property, place and personal service for the world's most remarkable people. If you have any questions, or if we can help in any way, please contact us on the above number. Be it about a property you have, a property you want, dates to check or any special requirements you may need, we'd love a chat.

