

domus  
stay.

---

## Ennismore Gardens

KNIGHTBRIDGE SW7

2 Bedrooms, 2 Bathrooms  
For 4 guests

---





An opulent two-bedroom apartment in Knightsbridge. This hideaway pays homage to its prestigious postcode.

Set on the lower level of an elegant period block, an unexpected home is a gallery of timeless design. From the entranceway, expansive fitted mirrors reflect considered design choices. The distinctive aesthetic is defined by recessed lighting, pared-back wainscoting and panelling overhead.



# The living spaces

The open-plan kitchen, dining and reception room forms the heart of the home. Sliding doors either expand the space or close it off from the hallway. With heritage cornicing and integrated Miele appliances, the kitchen is a culinary haven. Sleek white cabinetry pairs with elegant marble worktops. Dine at the LED-lit breakfast bar, or settle for the evening at the dining table which provides seating for six.

Beneath a coffered ceiling, herringbone flooring sweeps into the living area. Sink into the boucle sofa and put on a classic film. A dark media wall with gilded detailing adds drama to the room's white monochromatic palette. A bay window with French doors beckons in natural light, creating an uplifting feel. Along the corridor, the home-gym is an ideal spot to work up a sweat.









## Bedrooms & bathrooms

Double doors grant access to the distinguished principal bedroom suite. Denim blue walls are enlivened by daylight via an expansive skylight and an adjoining patio. The brickwork of a dark fireplace adds rigour. A wall of bespoke joinery provides storage options while the en suite bathroom draws together a countertop basin, freestanding bathtub and a rainfall shower. The guest bedroom suite is a textural sanctum. This space also benefits from courtyard access, thoughtful details and a stylish en suite bathroom.







“A considered palette of materials and pristine finishes produce a feeling of indulgence.”

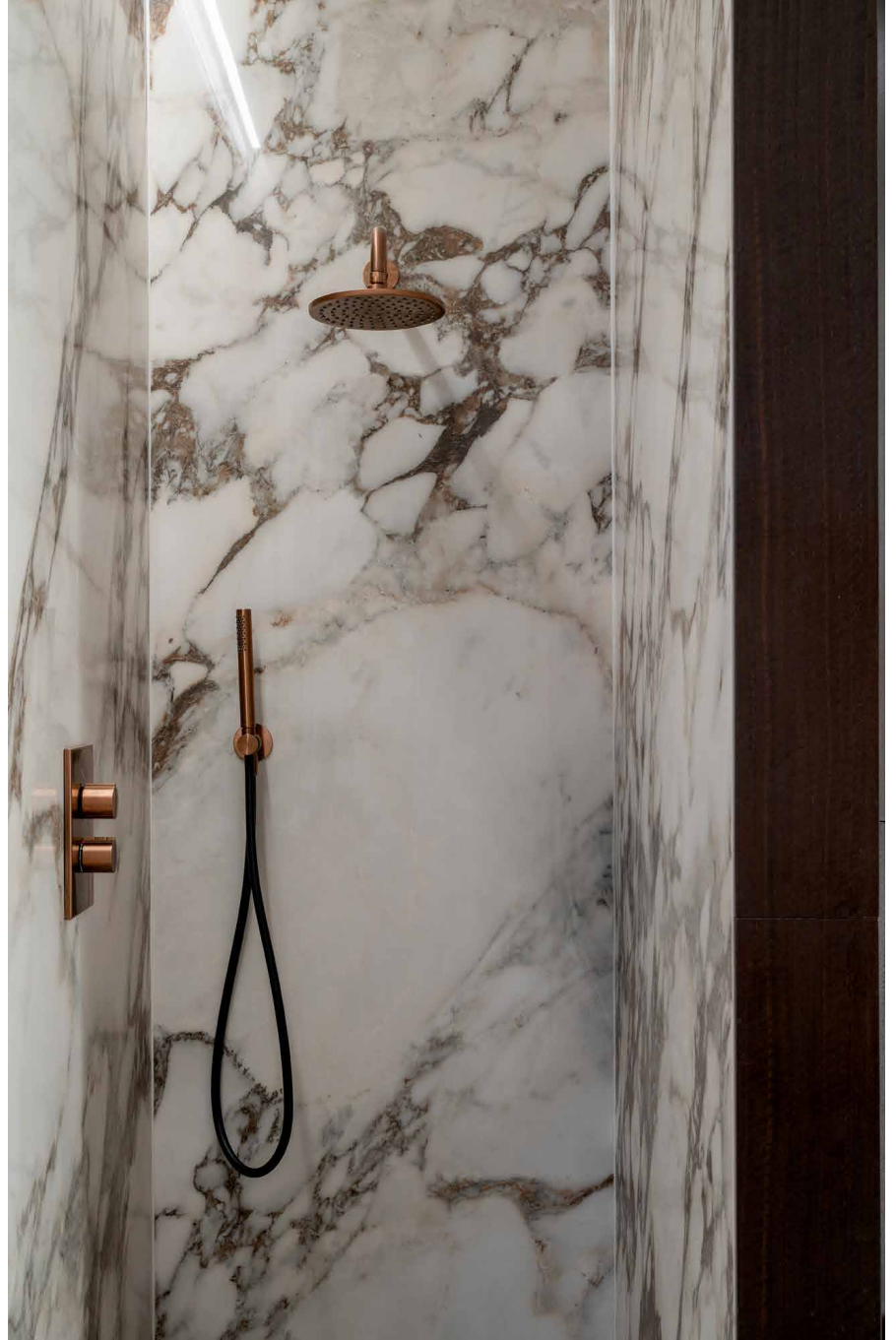


















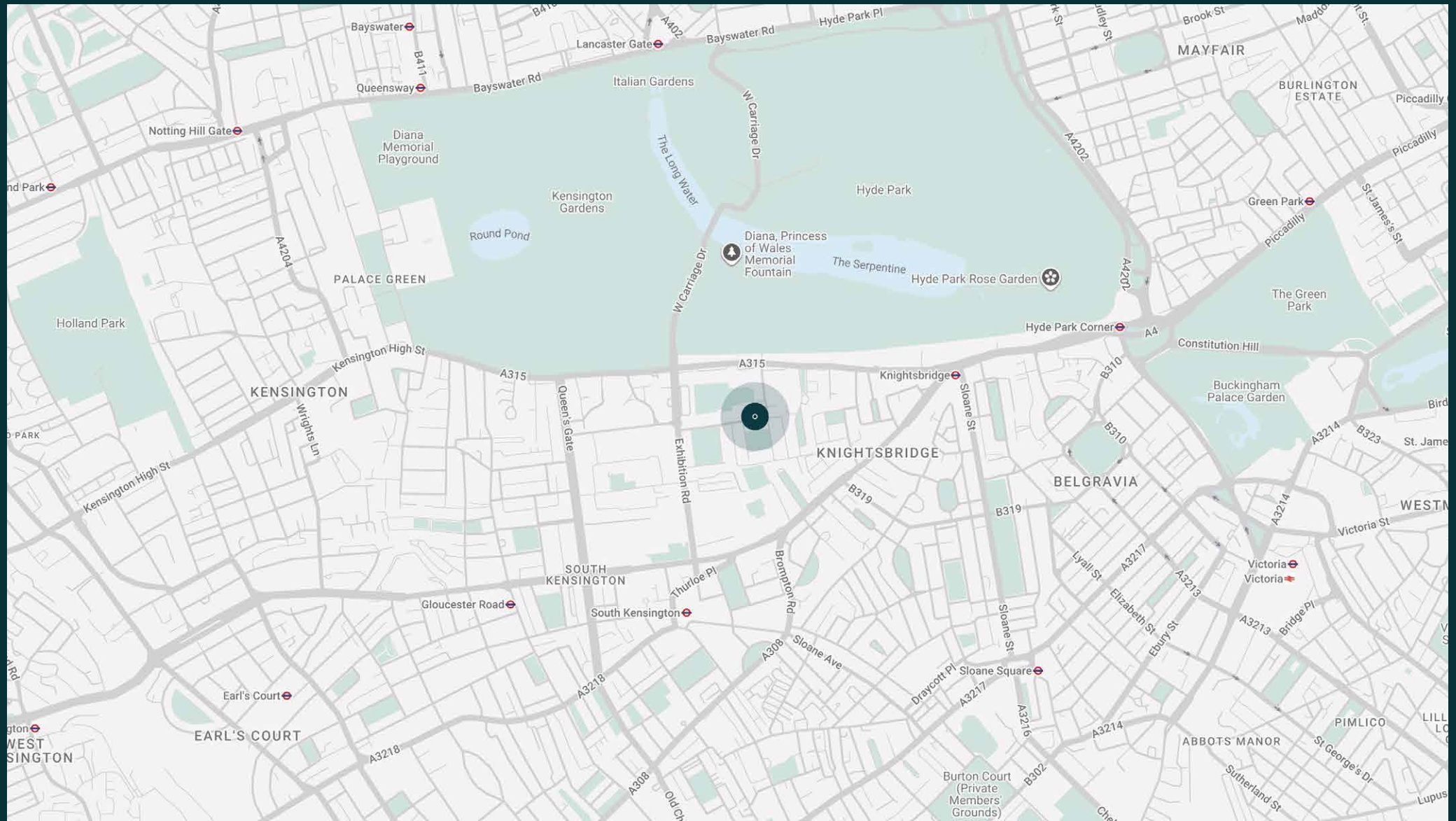
# The neighbourhood

On a handsome street five minutes' walk from Hyde Park, this eye-catching apartment is close to some of London's best attractions and restaurants.

An array of shops are within a short stroll including the city's foremost department store, Harrods. For culture, choose between the V&A Museum and the world-famous Royal Albert Hall. Local Michelin-starred restaurants include Amaya for refined Indian cuisine or Dinner by Heston Blumenthal for molecular gastronomy. Alternatively, dine at Gordon Ramsay's Petrus and enjoy a nightcap at The Alfred Tennyson. For green spaces, choose between Hyde Park and the peaceful oasis of Ennismore Gardens.



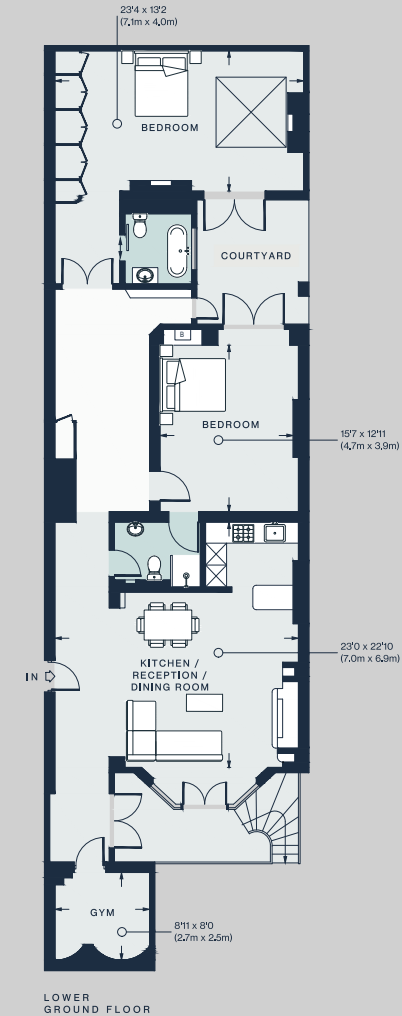




# Property features

- Open-plan kitchen, dining and reception room
- Principal bedroom suite
- Guest bedroom suite
- Internal courtyard
- Gym
- Access to communal gardens
- City of Westminster

Approx. 145.5 sq m / 1,566 sq ft



Approx. Gross Internal Area = 1566 sq ft / 145.5 sq m

# Guest & concierge services

Our concierge team are here to help guests settle in, seamlessly. Centre court tickets to Wimbledon, Premier League seats with the best views, Savile Row tailors on standby, or a private chef to cater to individual tastes – we aim to elevate every stay.

From the moment of booking with us, each guest has a single point of contact to finesse the details. Our statement spaces are just the starting point – to ensure everyone feels at home, our rates include:

- 
- Weekly housekeeping
  - Flexible check-in/out
  - Luxury linens and Bamford toiletries
  - Legal compliance on all our homes
  - A personal welcome and arrival essentials
  - Unlimited access to guest services and tailored experiences
  - Professional inventory inspection before and after every stay
  - Access to a curated portfolio of sole agency properties







Please get in touch if you have any questions  
or require any further information.

---

[hello@domusstay.com](mailto:hello@domusstay.com)

+44 (0)20 8168 8880

The property particulars are a guide not statements. Descriptions, photographs, and plans are for guidance only. The Property is offered "subject to contract and references". No warranties, representations, License or Tenancy is given by Domus Stay. Our full disclaimer together with trading names and our Privacy Policy is shown on our website

© Domus Stay 2025. All rights reserved.

