

domus
stay.

Eaton Square

BELGRAVIA

3 Bedrooms, 2 Bathrooms
For 6 guests





A meticulously reimagined three-bedroom apartment, where classical proportions meet the tailored elegance of Finchatton architects.

Set within the distinguished stucco-fronted terraces of Eaton Square, this three-bedroom apartment captures the quiet grandeur of one of Belgravia's most coveted addresses. Ornate porticos, wrought-iron railings and pristine façades define the square's architectural rhythm, a sophistication which is continued inside thanks to Finchatton's expert design. As a leading developer in the prime real-estate market, expect a considered material palette, bespoke craftsmanship and integrated technology.

The living spaces

The reception room is elegant and inviting, crafted with bespoke joinery, sleek furniture and sculptural lighting. A bold marble fireplace – complete with a remote-controlled gas fire – and television form a cosy focal point for quiet nights in; beyond, French doors draw in reams of natural light and open directly onto the garden, creating an easy sense of indoor-outdoor living.



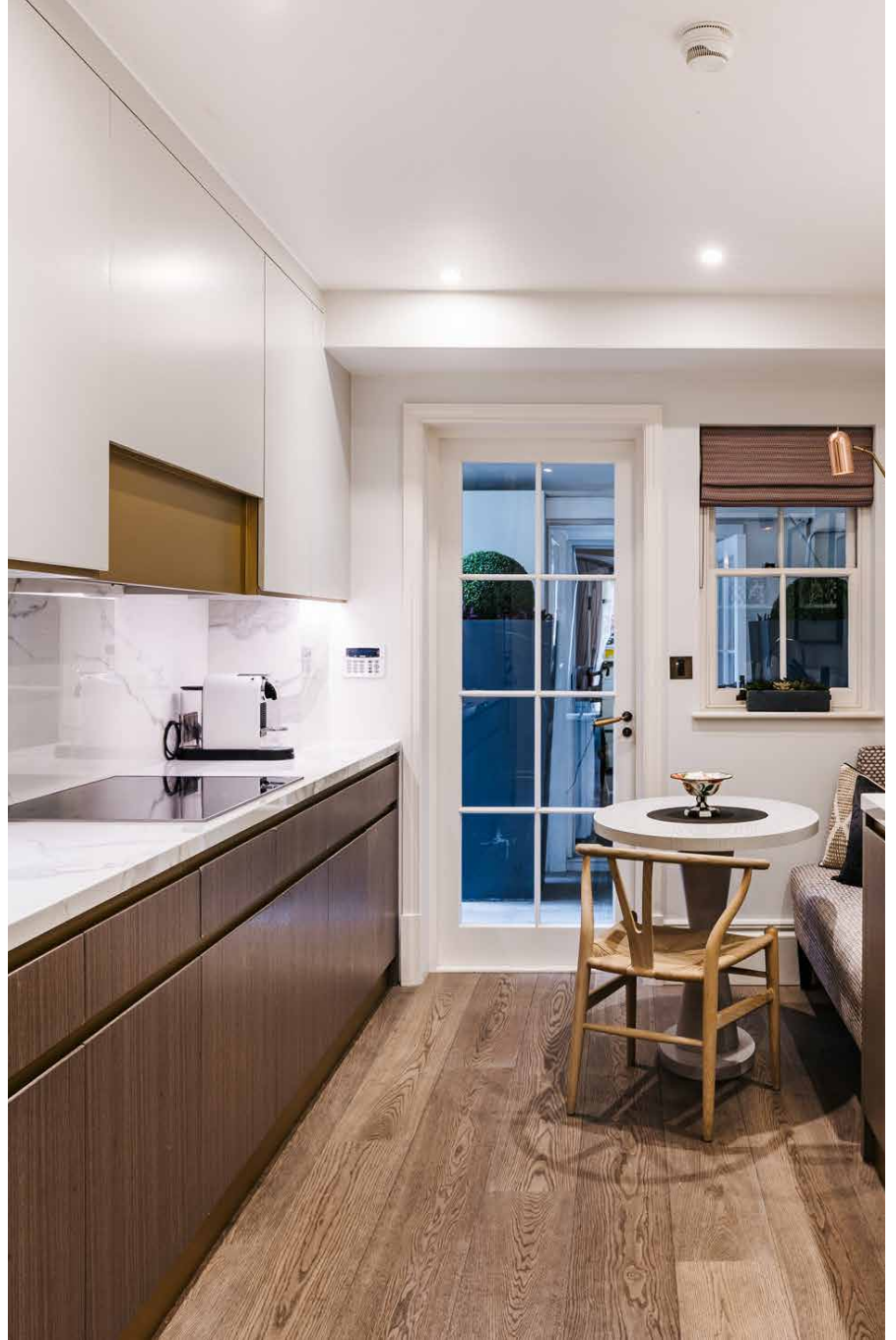






Kitchen & dining

The dining area has an intimate feel, centered by a sleek wood table and upholstered chairs. French doors extend the space outdoors, enhancing the sense of flow. In the kitchen, streamlined cabinetry is paired with crisp Neolith surfaces and integrated Miele appliances. Chrome tapware and antique brass ironmongery introduce subtle contrast, lending accented warmth to the minimalist aesthetic.



Bedrooms & bathrooms

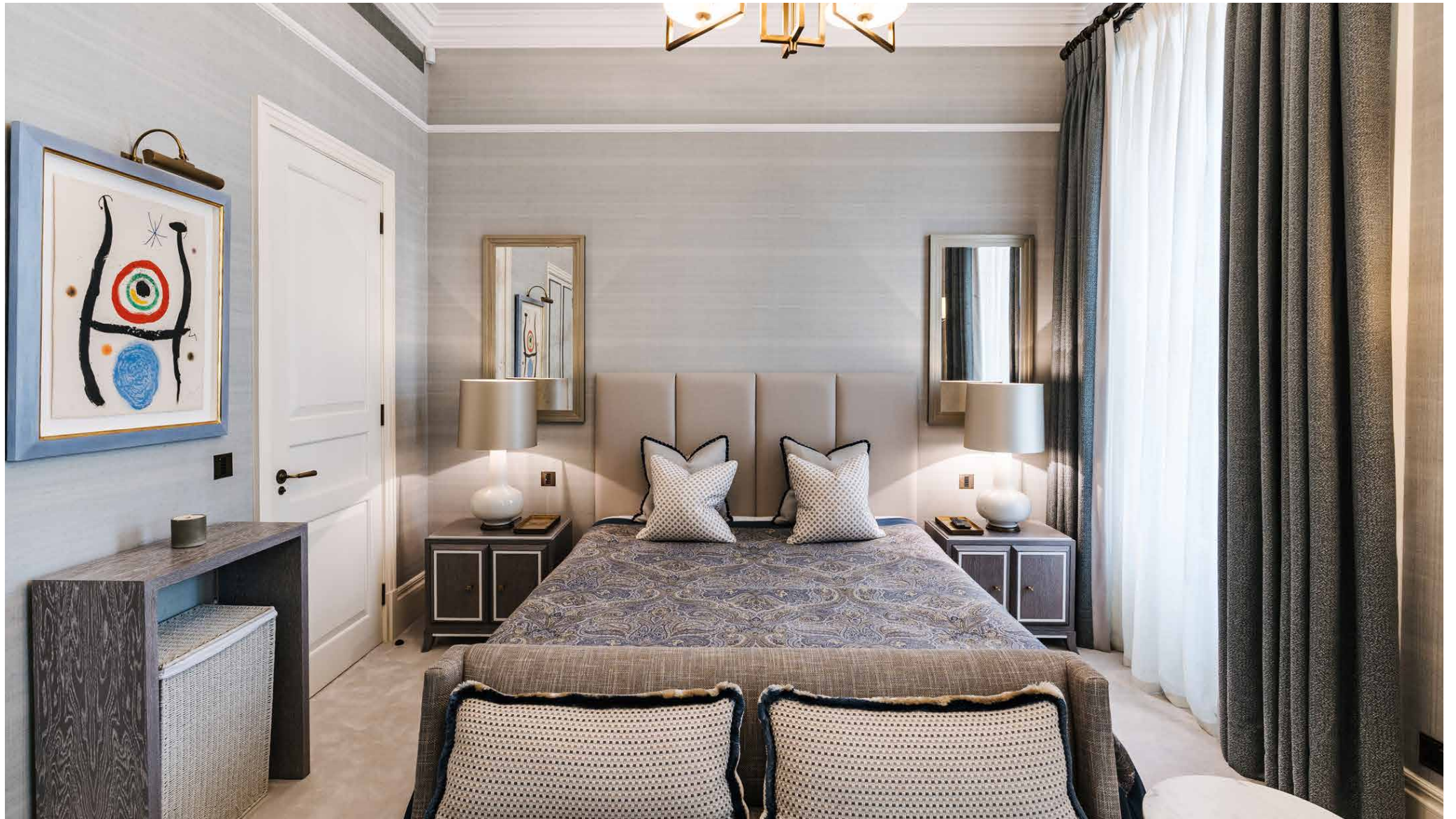
The principal suite is a calm, light-filled retreat. Soft wool carpets run underfoot, while full-height glazing opens onto a private terrace. A bespoke dressing room sits to one side; to the other, an en suite bathroom finished in book-matched marble, complete with a walk-in shower and refined fittings.

Two further bedrooms are equally considered. One benefits from its own en suite, while the third enjoys direct access to the terrace. A further bathroom, finished in marble and refined fittings, serves the home with equal attention to detail.

















Outside space

Tailor-made for warm-weather gatherings, the landscaped garden is a tranquil extension of the living space. Ceramic tiling is softened by mature planting and verdant trees, which create a real sense of privacy to the al fresco setting. Lighting is neatly carved into the design, casting a warm glow as evening draws in.

Residents can also enjoy access to the award-winning Eaton Square Gardens — a serene enclave of blooming borders, water features and shaded pathways, ideal for unhurried afternoons and summertime picnics.

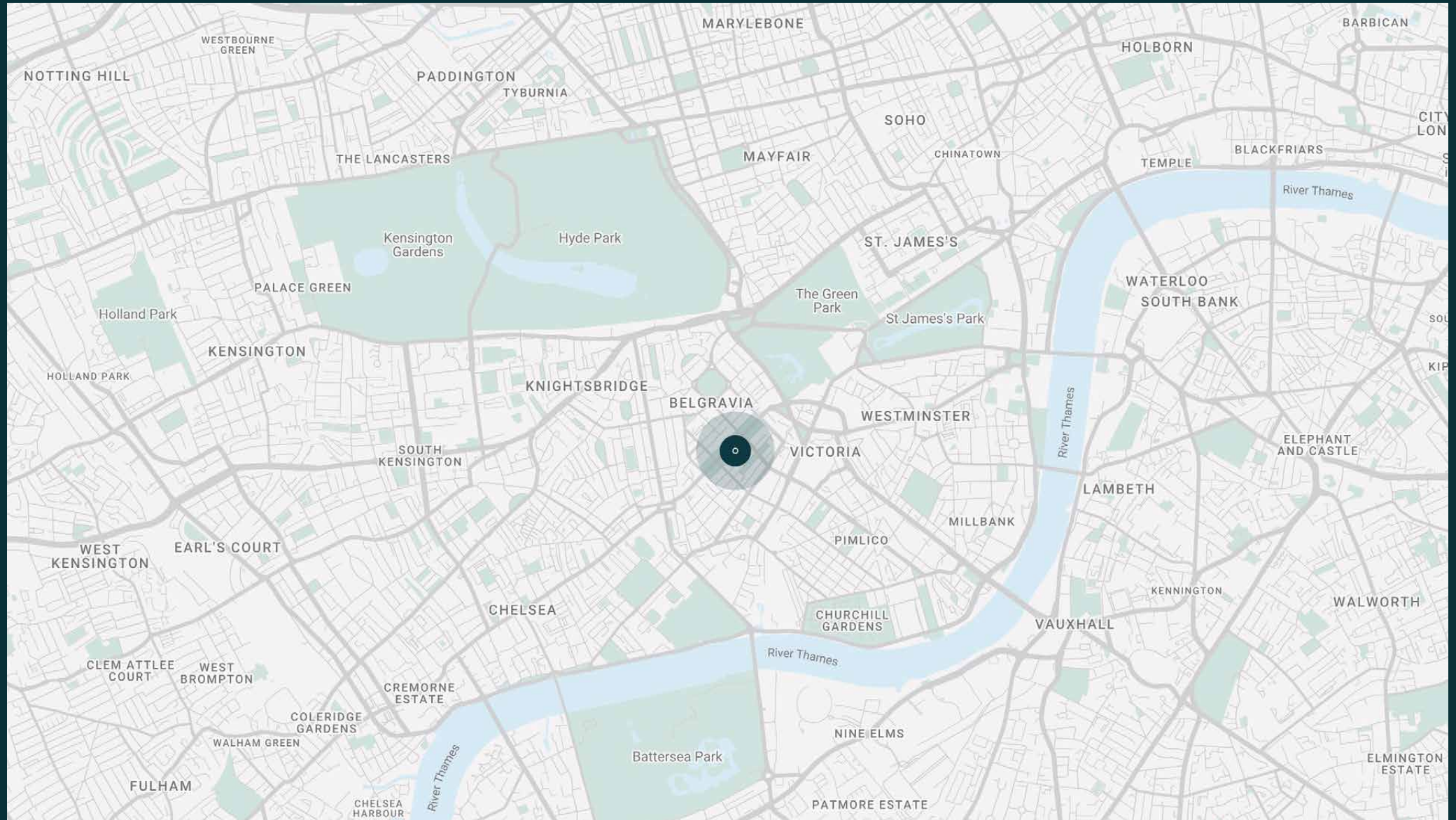




The neighbourhood

Bordered by Knightsbridge and Chelsea, Eaton Square is a springboard to some of London's most well-heeled spots. Start your morning on village-like Elizabeth Street with a coffee from Tomtom, stopping by Chestnut Bakery and Bayley & Sage to source organic produce. Head to the King's Road for an abundance of retail offerings, followed by an art-filled afternoon at the Saatchi Gallery. During springtime, the streets bloom for the infamous FHS Chelsea Flower Show. There are fine dining options aplenty, from La Poule au Pot to Hunan, Pétrus by Gordon Ramsay and The Harwood Arms – London's only Michelin-starred pub. Plus, Victoria Station is nearby, giving you easy access across the rest of the capital.



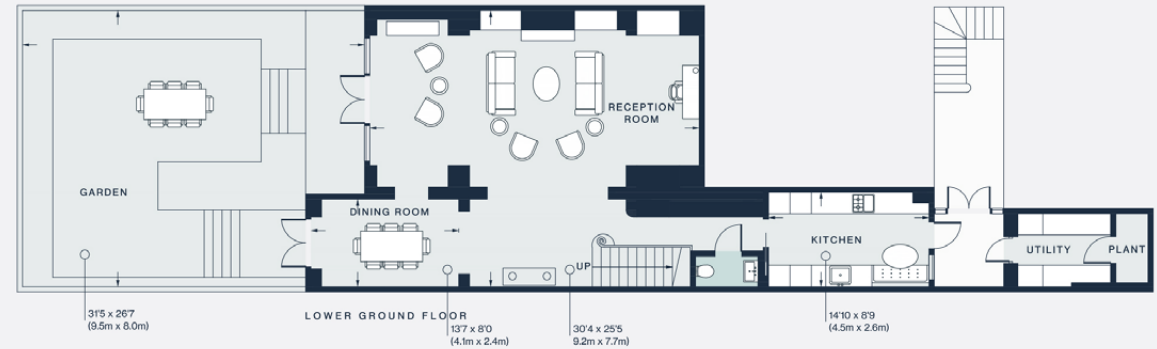
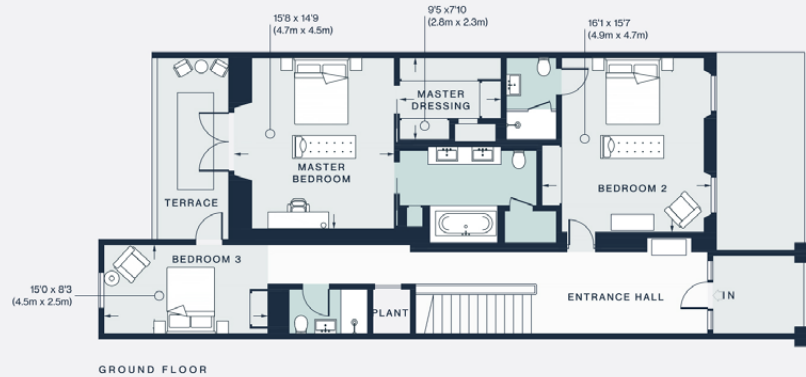




Property features

- Architecture by Finchatton
- Open-plan reception and dining room
- Contemporary kitchen
- Principal bedroom suite with walk-in wardrobe
- Guest bedroom suite
- One further bedroom
- One further bathroom
- Private garden and terrace
- Residents' access to Eaton Square Garden
- Membership available for tennis courts
- City of Westminster

Approx. 2,256 sq ft / 210 sq m



Approx. Gross Internal Area = 2256 sq ft / 210 sq m

Floor plans are for illustrative purposes only and not to scale. Compliant with RICS code of measuring practice.
Prepared for Domus Stay. Copyright © All Rights Reserved.

Guest & concierge services

Our concierge team are here to help guests settle in, seamlessly. Centre court tickets to Wimbledon, Premier League seats with the best views, Savile Row tailors on standby, or a private chef to cater to individual tastes – we aim to elevate every stay.

From the moment of booking with us, each guest has a single point of contact to finesse the details. Our statement spaces are just the starting point – to ensure everyone feels at home, our rates include:

- Weekly housekeeping
- Flexible check-in/out
- Luxury linens and Bamford toiletries
- Legal compliance on all our homes
- A personal welcome and arrival essentials
- Unlimited access to guest services and tailored experiences
- Professional inventory inspection before and after every stay
- Access to a curated portfolio of sole agency properties



domus stay.

Please get in touch if you have any questions
or require any further information.

hello@domusstay.com

+44 (0)20 8168 8880

The property particulars are a guide not statements. Descriptions, photographs, and plans are for guidance only. The Property is offered "subject to contract and references". No warranties, representations, License or Tenancy is given by Domus Stay. Our full disclaimer together with trading names and our Privacy Policy is shown on our website

© Domus Stay 2025. All rights reserved.

