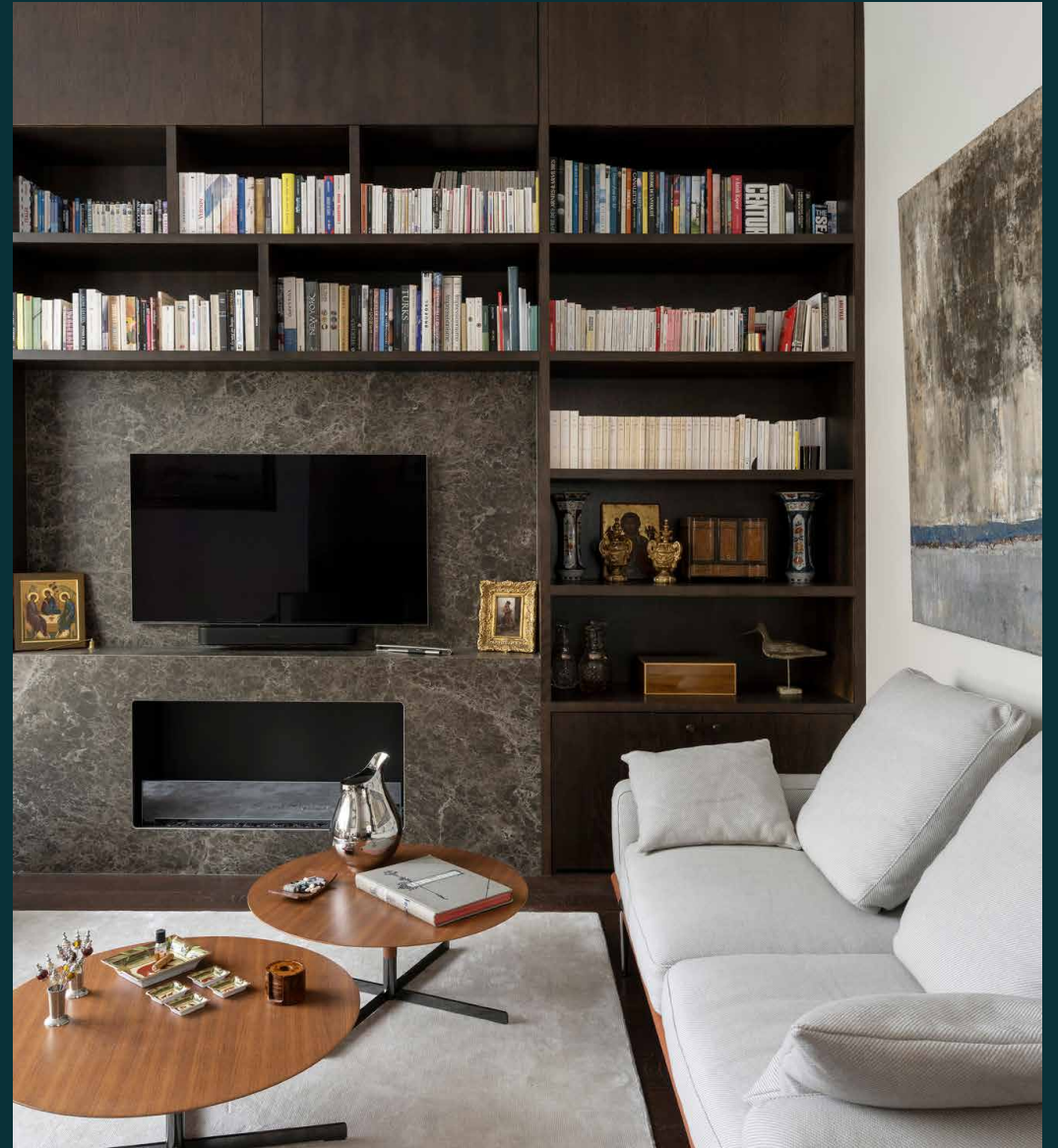


domus
stay.

Draycott Place III

CHELSEA SW3

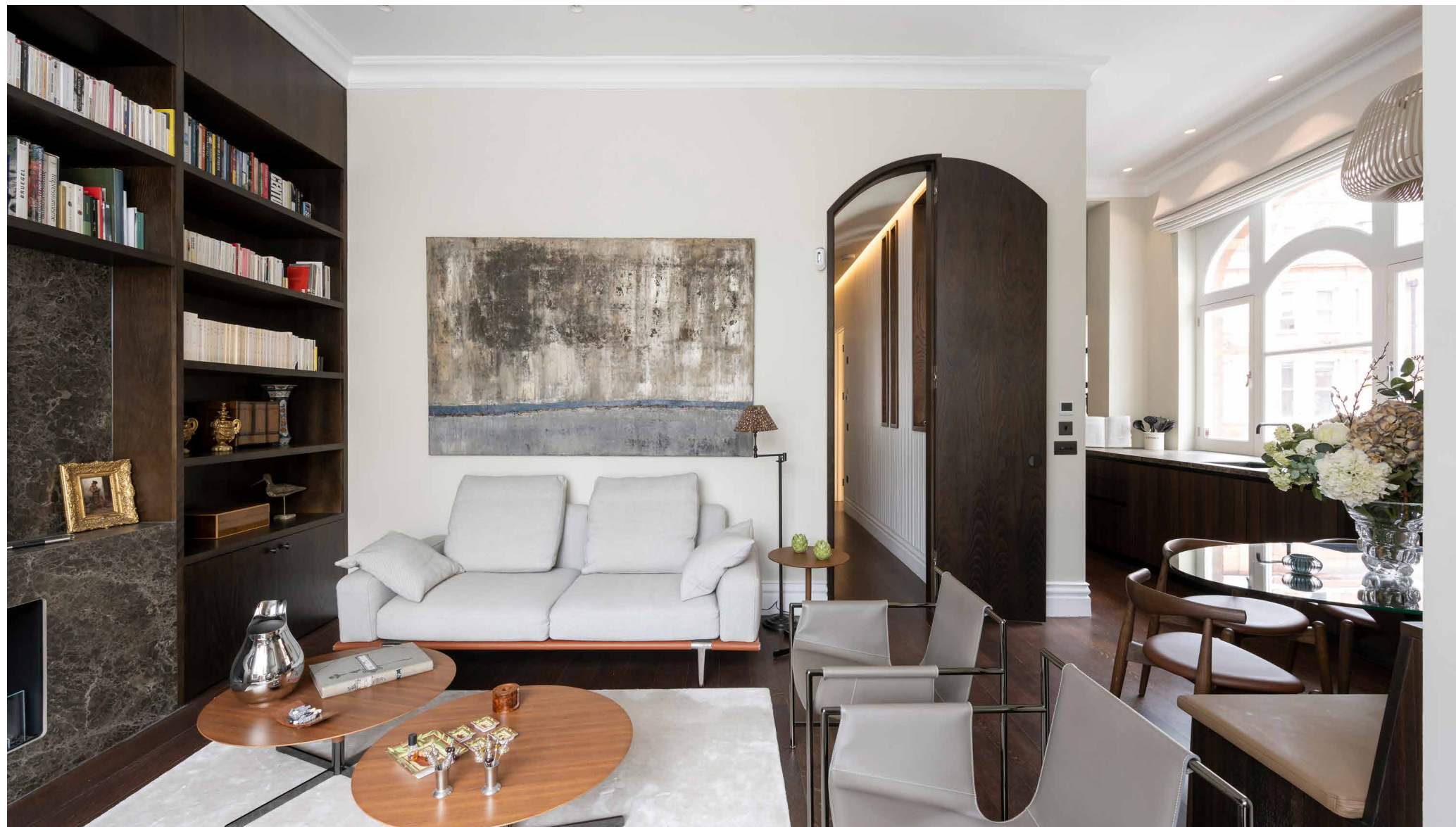
2 Bedrooms, 2 Bathrooms
For 4 guests





Nestled within a redbrick Chelsea terrace, urbane interiors play out across this two-bedroom apartment.

On a handsome street in one of London's most sought-after postcodes, this striking two-bedroom apartment offers an urbane blend of period charm and design-led modernity. Set in a redbrick terrace with pediment-topped windows, expect an array of timeless, eye-catching details.



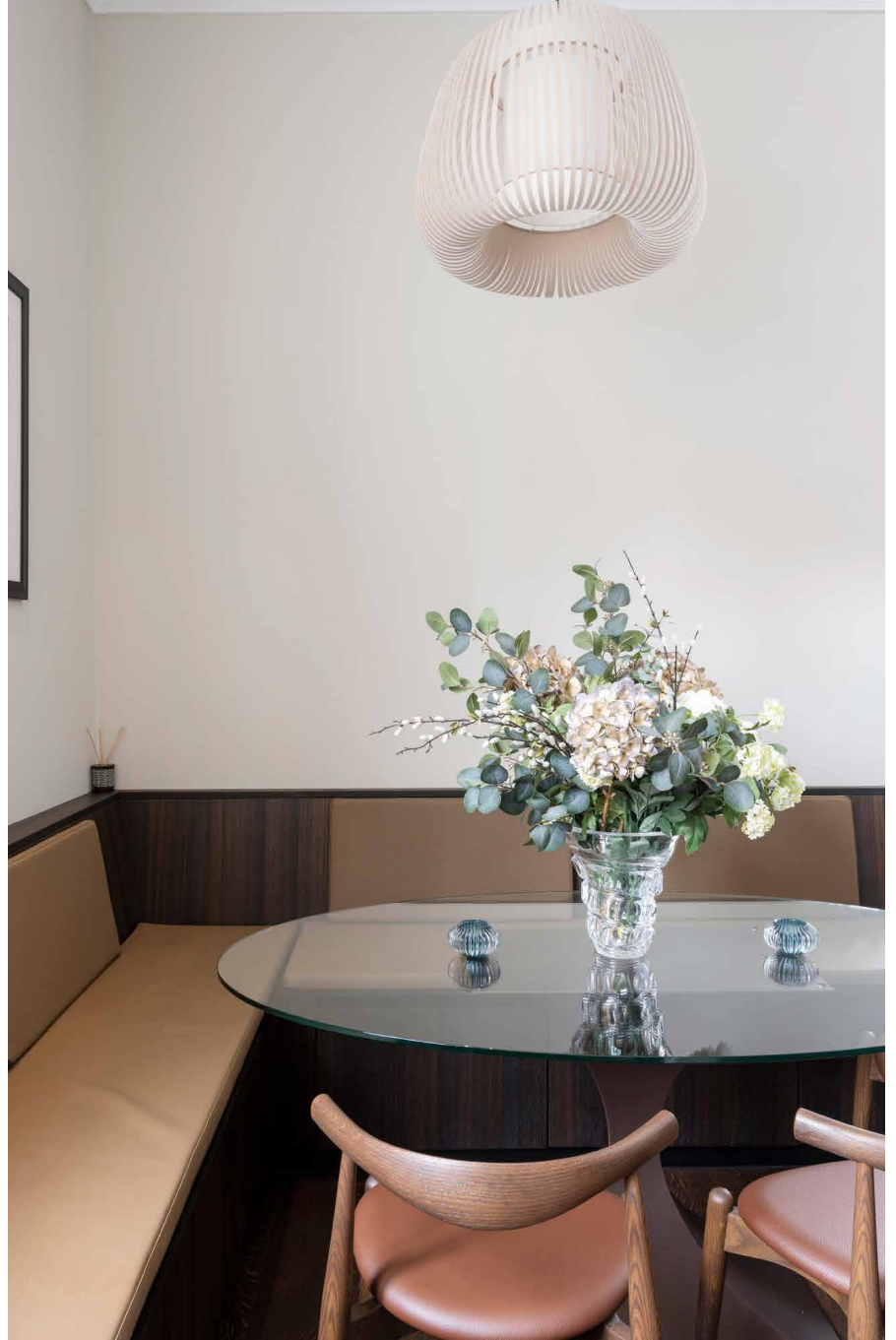
The living spaces

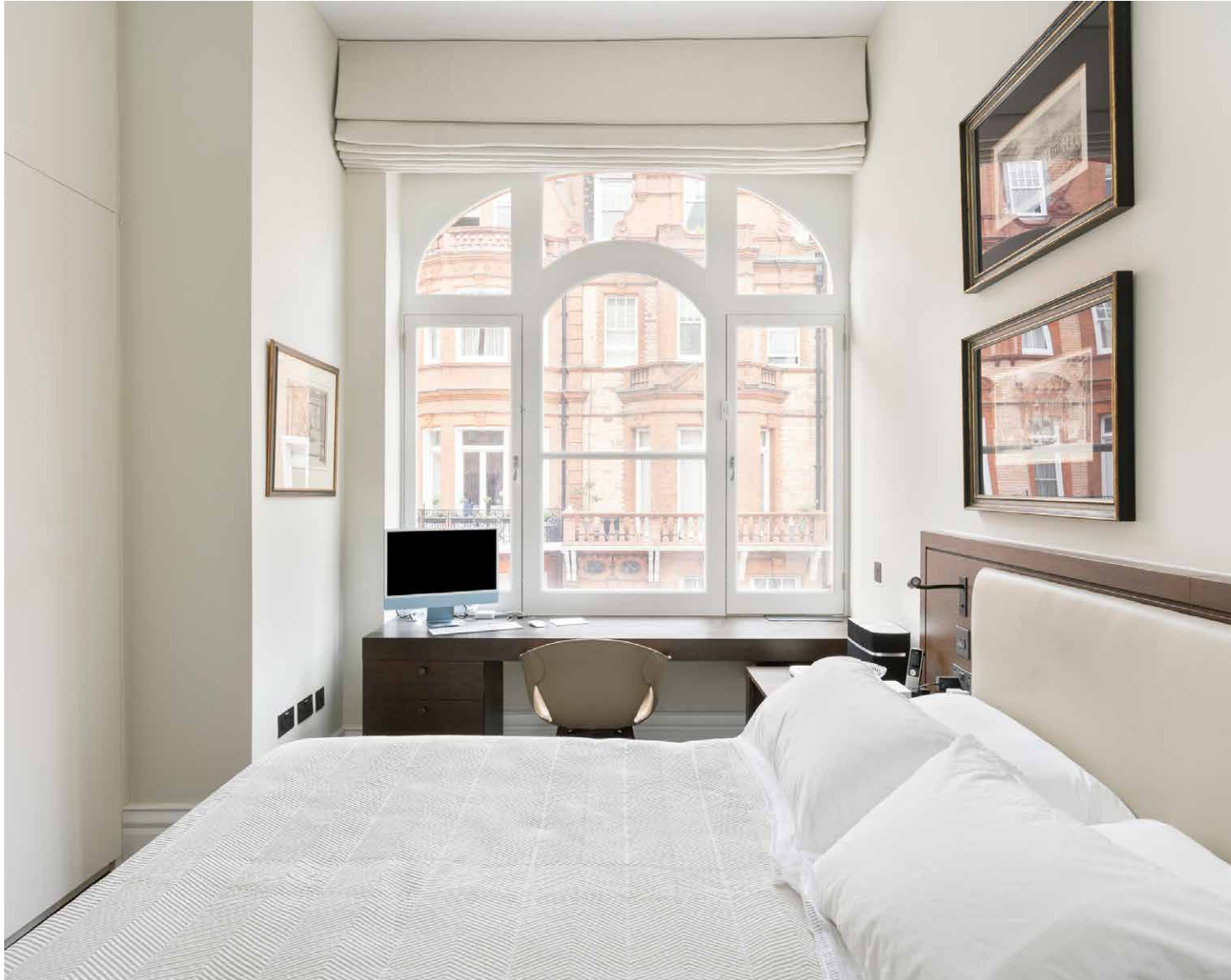
An arched doorway sets the tone for this open-plan space, where refined finishes meet contemporary design. The reception room offers a comfortable seating area perfect for entertaining, with bouclé armchairs and an ultramodern fireplace. A southwest-facing bay window fills the space with natural light, illuminating the bespoke joinery and period proportions. During quieter moments, relax in the handmade leather seat – the perfect spot to enjoy a book from the home library.

The eat-in kitchen extends from the reception room and is designed with minimalism in mind. Dark cabinetry, stone worktops, and integrated appliances create clean lines, while the sleek glass hob and undermount sink make for fuss-free meal prep. A banquette seating area makes dining here particularly cosy.



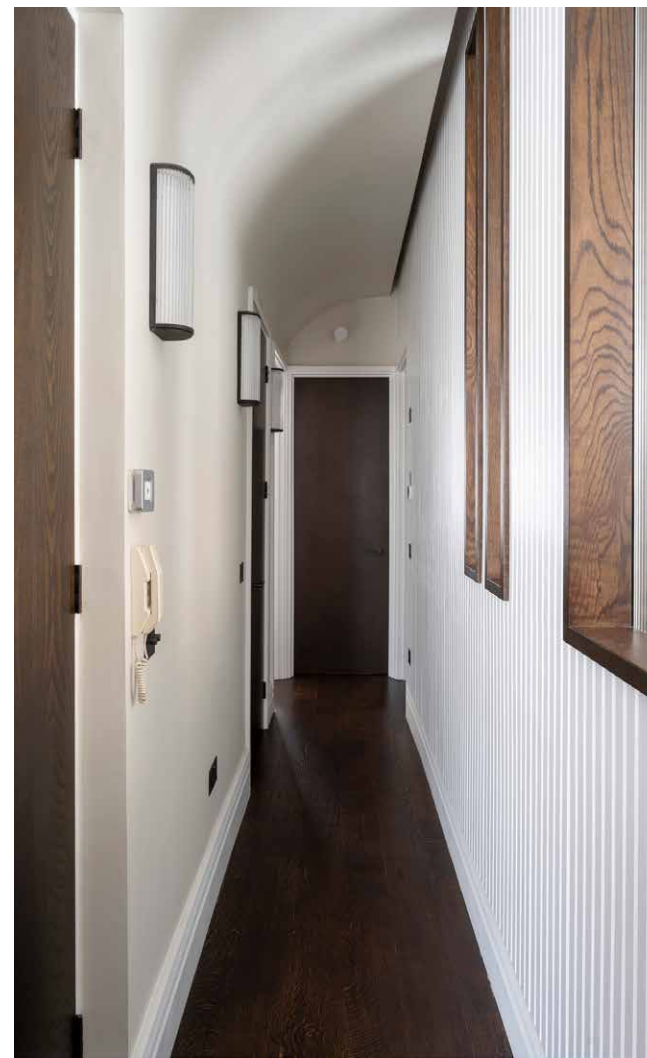






Bedrooms & bathrooms

The principal suite is a sanctuary, where neutral tones and fitted wardrobes create a serene atmosphere. A dedicated study area framed by a large window offers the ideal spot for quiet work. The marble-clad en suite bathroom continues the tranquil theme, with textured wall tiles, modern fittings, and a bathtub with an integrated shower.







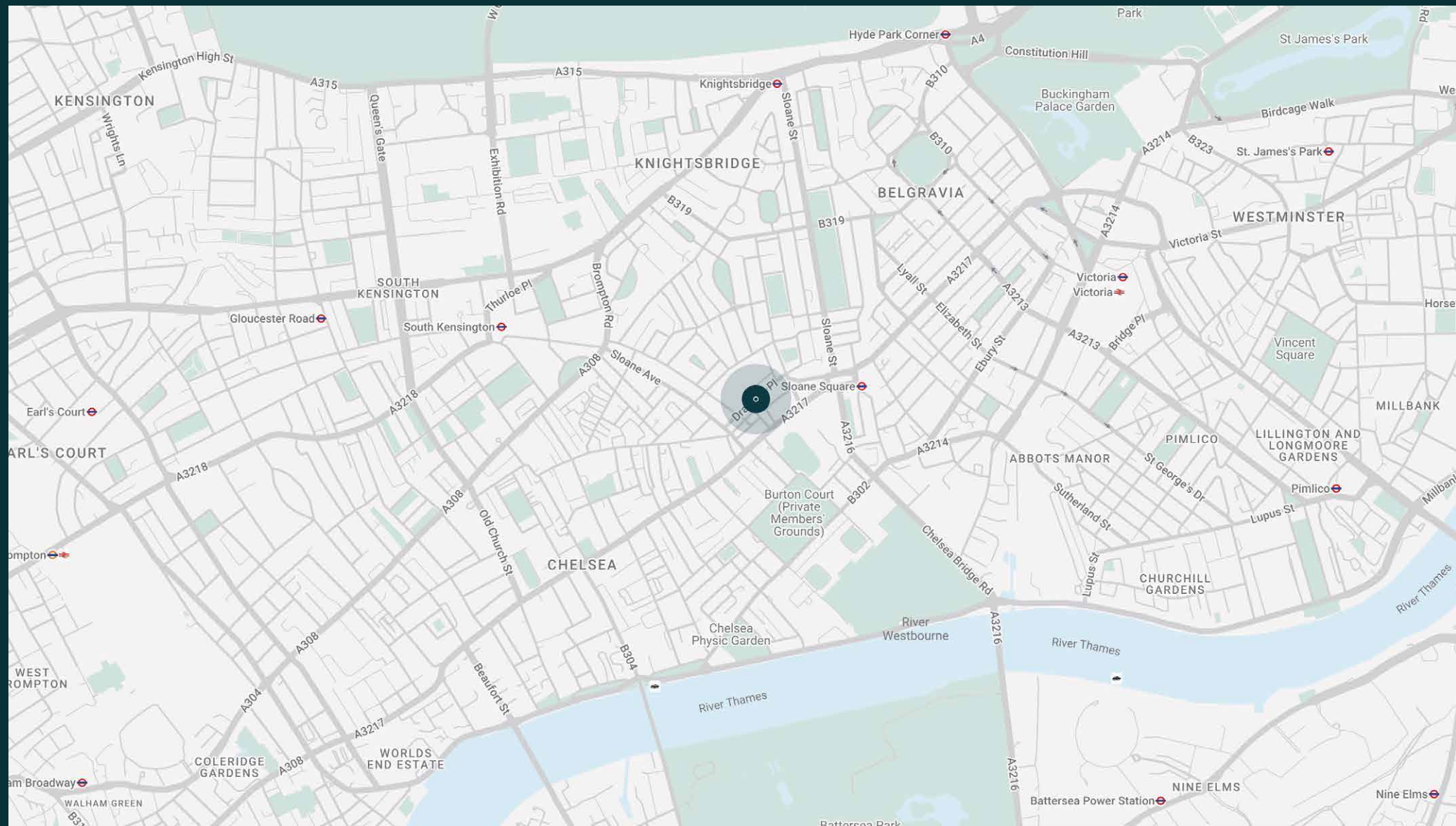


The neighbourhood

Draycott Place is a regal street in Chelsea moments from the area's bustling hotspots.

Within one minute's walk, you'll find Michelin-starred restaurant The Five Fields. A brief stroll will take you past two more. Head to Sloane Square and dine at famed French bistro The Colbert. Alternatively, make a bid for the boutiques of The King's Road. Duke of York Square and the Saatchi Gallery are also both just two minutes' walk from your front door.

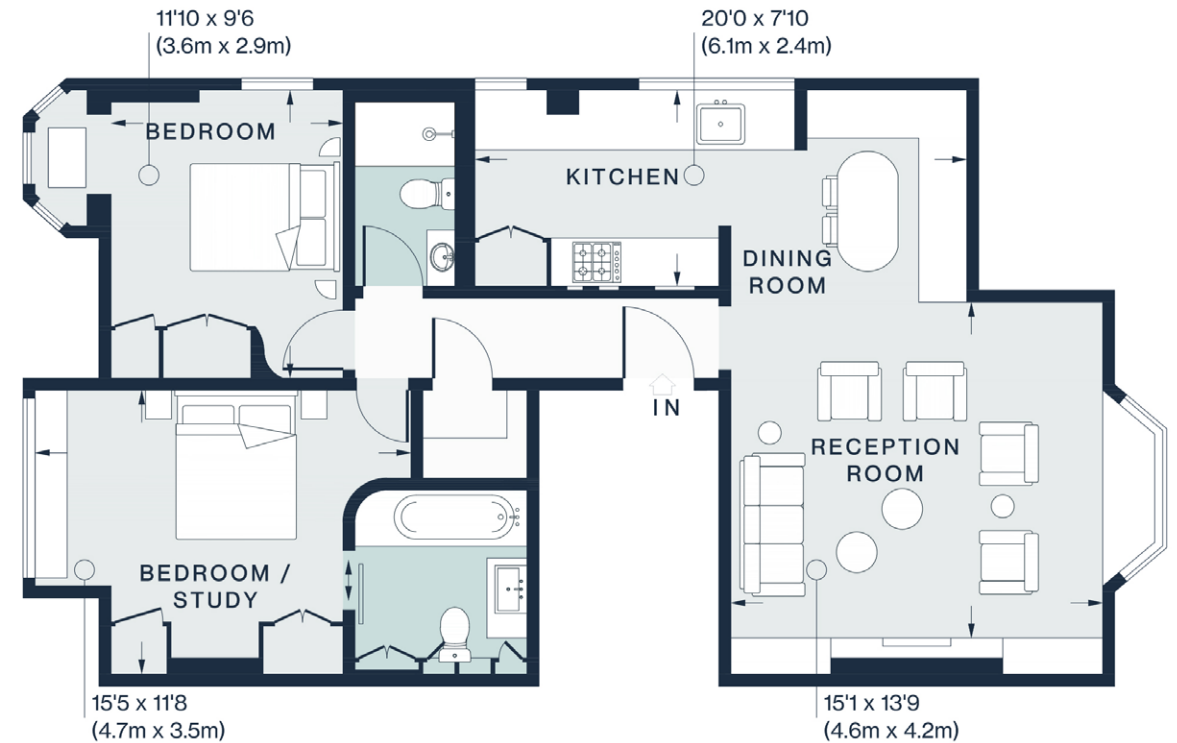




Property features

- Open-plan kitchen and reception room
- Principal bedroom suite with study space
- Guest bedroom suite with study space
- Shower room
- Royal Borough of Kensington & Chelsea

Approx. 614 sq m / 6,611 sq ft



Approx. Gross Internal Area = 870 sq ft / 80.8 sq m

Floor plans are for illustrative purposes only and not to scale. Compliant with RICS code of measuring practice.
Prepared for Domus Stay. Copyright © All Rights Reserved.

Guest & concierge services

Our concierge team are here to help guests settle in, seamlessly. Centre court tickets to Wimbledon, Premier League seats with the best views, Savile Row tailors on standby, or a private chef to cater to individual tastes – we aim to elevate every stay.

From the moment of booking with us, each guest has a single point of contact to finesse the details. Our statement spaces are just the starting point – to ensure everyone feels at home, our rates include:

-
- Weekly housekeeping
 - Flexible check-in/out
 - Luxury linens and Bamford toiletries
 - Legal compliance on all our homes
 - A personal welcome and arrival essentials
 - Unlimited access to guest services and tailored experiences
 - Professional inventory inspection before and after every stay
 - Access to a curated portfolio of sole agency properties





Please get in touch if you have any questions
or require any further information.

hello@domusstay.com

+44 (0)20 8168 8880

The property particulars are a guide not statements. Descriptions, photographs, and plans are for guidance only. The Property is offered "subject to contract and references". No warranties, representations, License or Tenancy is given by Domus Stay. Our full disclaimer together with trading names and our Privacy Policy is shown on our website

© Domus Stay 2025. All rights reserved.

