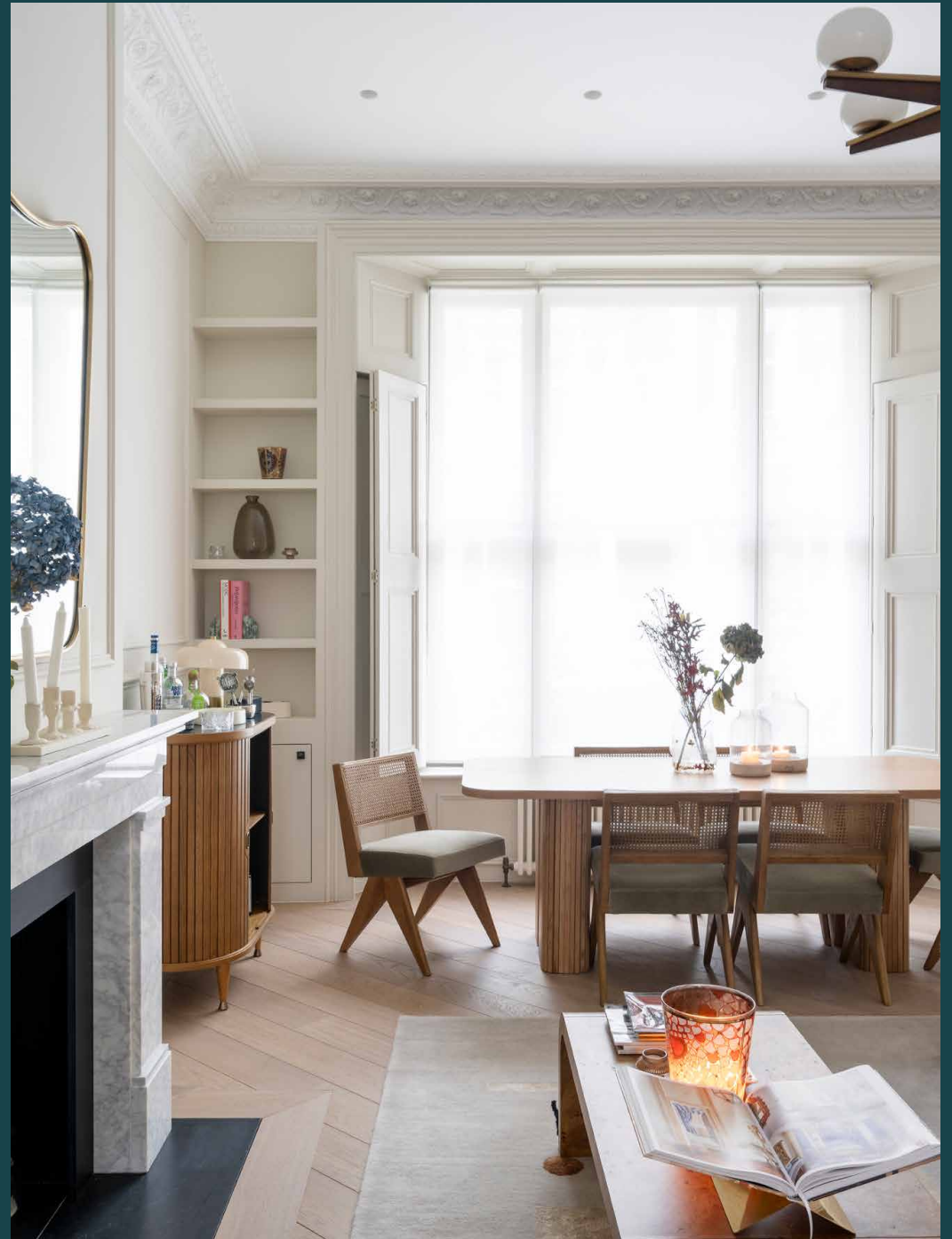


Clanricarde Gardens

Notting Hill W2

2 Bedrooms, 2 Bathrooms
For 4 guests





A lesson in timeless elegance minutes from leafy Hyde Park, there's plenty to energise and soothe at this two-bedroom duplex apartment.

Found in a quintessential period townhouse on a quiet street, this light-filled two-bedroom apartment is both a stepping stone to the city and a calming place to retreat to after a day of exploring. Immaculately presented, it pairs classic features with contemporary comforts and offers the space to tune in or out.

Set on the raised ground floor, the open-plan kitchen and reception room is configured for socialising. A marble fireplace, wainscoting and a three-and-a-half metre high ceiling adorned with cornicing lend an impressive backdrop for gatherings around the six-seater dining table. At the other end of the room, the striking kitchen caters for every type of cook and host. A waterfall marble island doubles as a breakfast bar – pull up a stool to watch chefs at work, mix a drink or linger over your morning coffee.



An elegant colour palette and abundance of natural light offer a calming salve to the lively streets beyond.



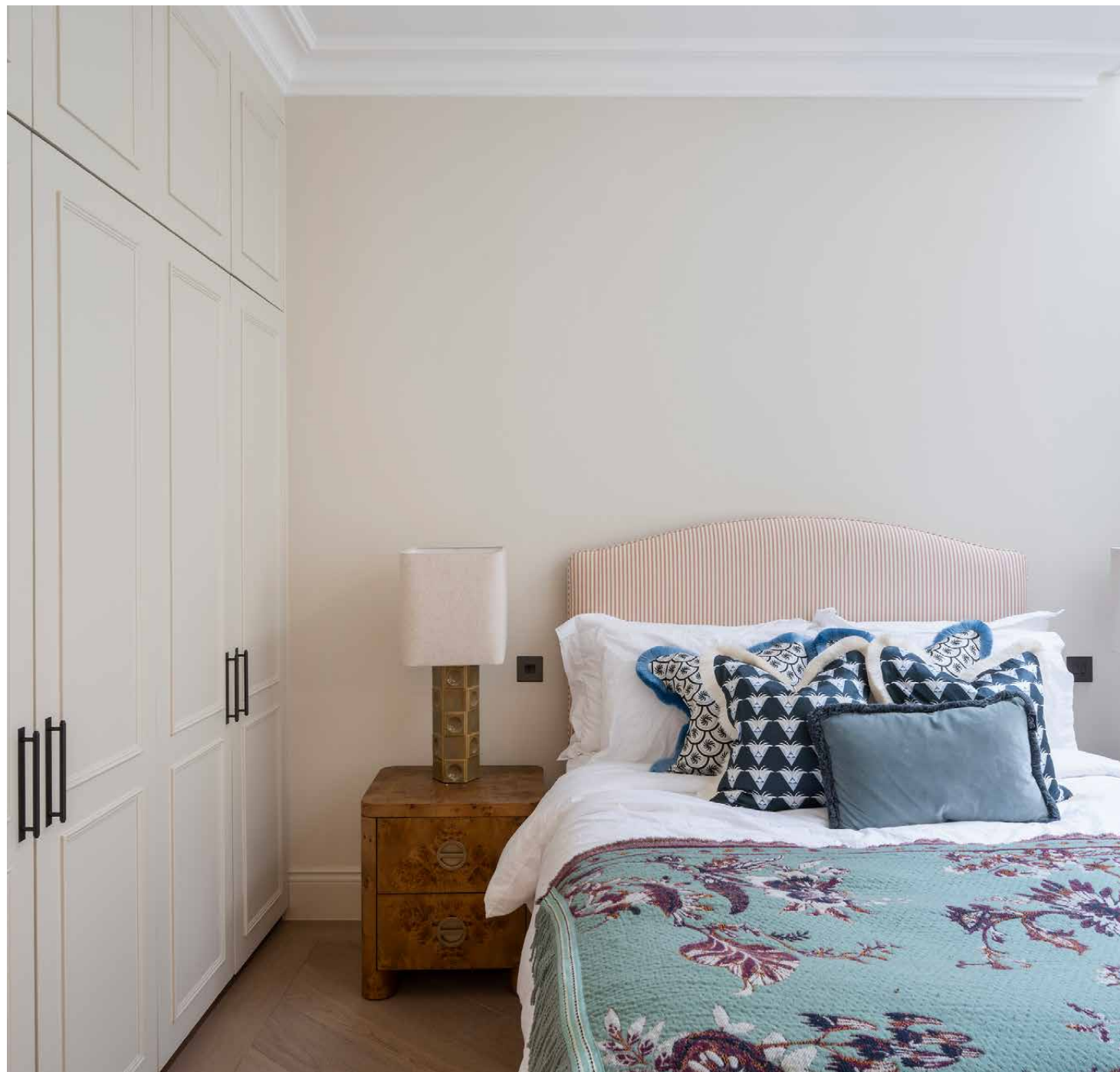
“

Gather friends and family around the dining table or the marble kitchen island for dinner at its most ambient.





Also on this floor, there's a guest bedroom with a peaceful persuasion. Soothing hues and sumptuous soft furnishing set the tone, while a row of fitted wardrobes brings a sense of order. A considered palette of materials continues into the principal bedroom suite below where a large skylight infuses the space with a warm glow. A sleek oak bedframe with a tangerine velvet-upholstered headboard adds a pop of colour. To catch the last of the evening rays, step out onto the secluded patio, accessed from this floor. The ultimate luxury, the adjoining en suite bathroom features a bathtub and dual vanity. One further bathroom features a walk-in rainfall shower with deep blue tiles and a sophisticated finish.











LOCATION

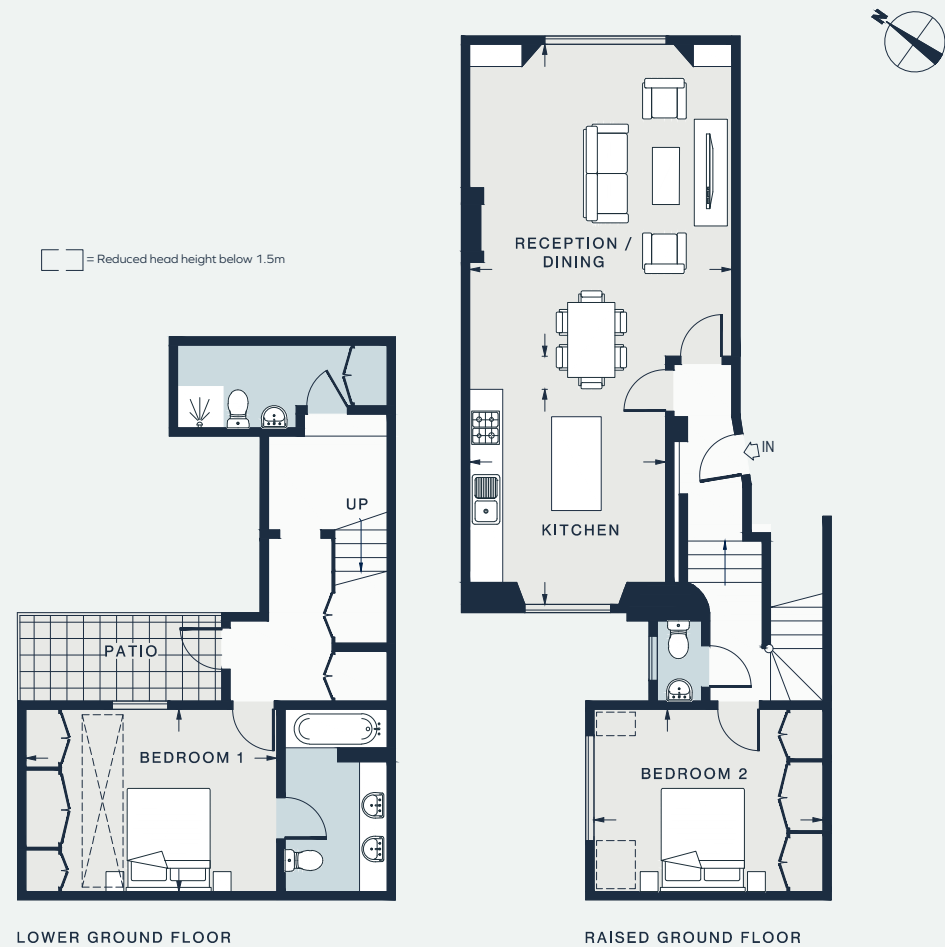
Embrace the energy of invigorating Notting Hill and Bayswater, right on your doorstep.

With the manicured lawns of Hyde Park just minutes away, moments of calm are also easy to come by here. Clear your head with a morning jog or, depending on the season, take a dip in the Serpentine Lido. For retail therapy, the boutiques of Westbourne Grove are nearby. Refuel with coffee and croissants from Sunday in Brooklyn – or venture a little further into Notting Hill for coveted vintage shopping. Come evening, dine at Gold or Mazi before dropping by The Hillgate for a nightcap.



PROPERTY HIGHLIGHTS

- Open-plan kitchen and reception room
- Principal bedroom suite
- Guest bedroom
- One further bathroom
- Guest cloakroom
- Private patio
- Royal Borough of Kensington & Chelsea



BEDROOM 1
13'9 x 10'10 (4.5m x 3.3m)

RECEPTION / DINING
18'4 x 15'5 (5.5m x 4.7m)

BEDROOM 2
13'9 x 11'0 (4.1m x 3.3m)

KITCHEN
12'10 x 12'1 (3.9m x 3.6m)

Approx. Gross Internal Area = 1195 sq ft / 111.0 sq m

Floor plans are for illustrative purposes only and not to scale. Compliant with RICS code of measuring practice.



Please don't hesitate to get in touch
if you have any questions or require
any further information.

hello@domusstay.com

+44 (0)20 8168 8880

Domus Stay provides the perfect combination of property, place and personal service for the world's most remarkable people. If you have any questions, or if we can help in any way, please contact us on the above number. Be it about a property you have, a property you want, dates to check or any special requirements you may need, we'd love a chat.

