

Chelsea Park Gardens II

Chelsea SW3

5 Bedrooms, 3 Bathrooms
For 10 guests





A cottage-like setting, with cosmopolitan Chelsea on the doorstep. Ease into local life at this charming five-bedroom Arts and Crafts home.

There's a real residential feel and sense of community to Chelsea Park Gardens – a quiet, leafy street tucked away from it all. The King's Road is only seconds away, but the atmosphere is overwhelmingly peaceful, enhanced by generous gardens to the front and back.

Inside, all four floors of this family home are well-appointed and attuned to the demands of everyday life. Light floods into the reception and dining room through a south-facing bay window. Classic, timeless style prevails – deep, sofas arranged around a fireplace, a circular six-seater dining table and floor-to-ceiling French doors out to the secluded garden. Lush with greenery and mature trees, follow the path past an outdoor dining area to a studio that doubles as a convenient, distraction free study.

Come evening, the eat-in kitchen is the natural gravitation point. Traditional in feel with solid wooden cabinetry, it's up to the task of entertaining – note the large wine fridge, integrated appliances and separate pantry.



Classic, timeless style prevails – deep, sofas arranged around a fireplace, a circular six-seater dining table and floor-to-ceiling French doors out to the secluded garden.



“

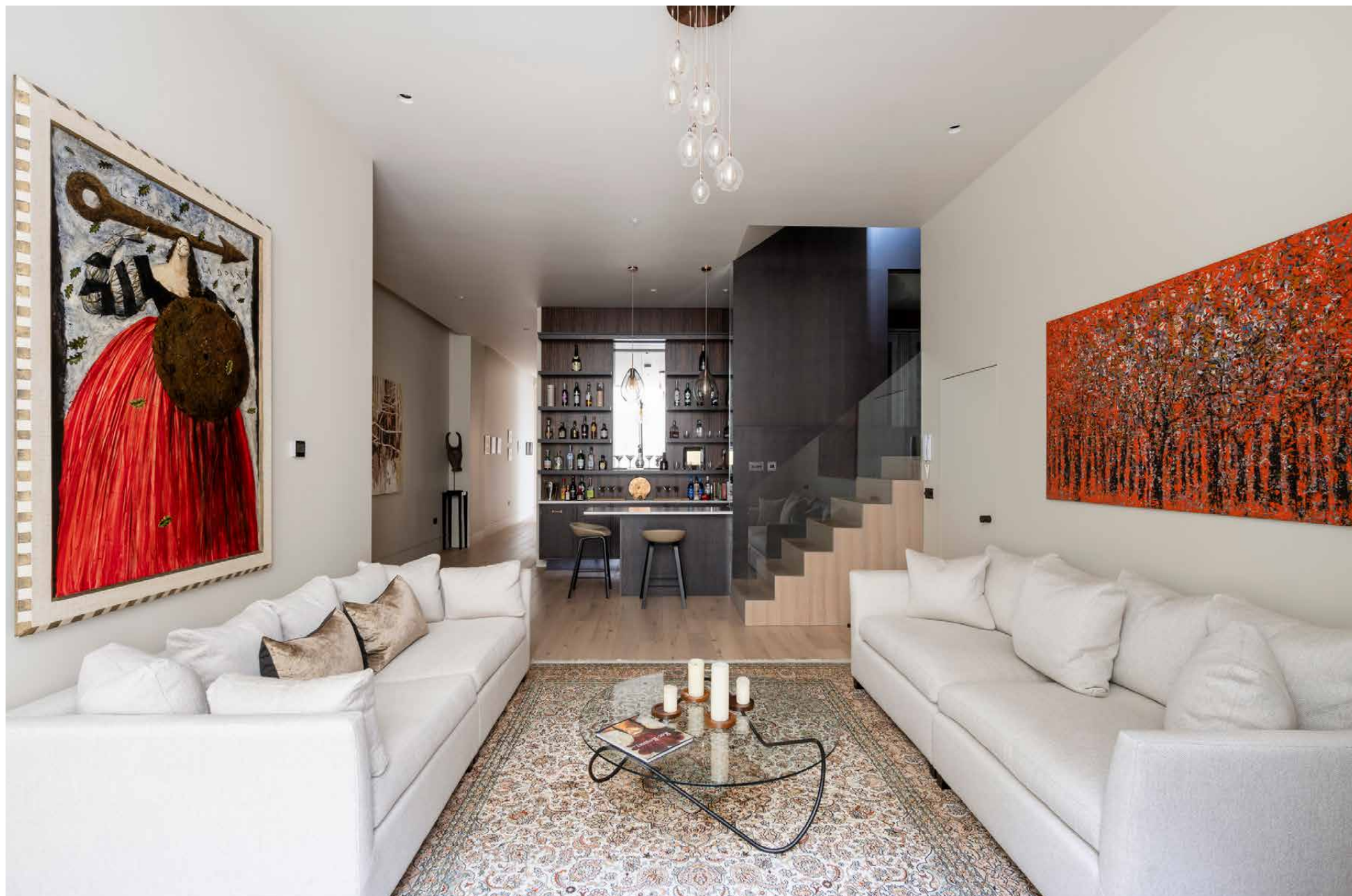
Inside, all four floors of this family home are well-appointed and attuned to the demands of everyday life.







Continue hosting on the lower ground floor – a space dedicated to socialising and switching off. A reception area with access to a terrace is served by a standout bar. Custom-built and well-stocked, it calls for cocktails; leave us to arrange a mixologist. Just along the corridor, a media room awaits, with sink-in sofas to elevate the silver screen experience. Also on this floor, you'll find a cloakroom, a guest bedroom suite and a utility room.











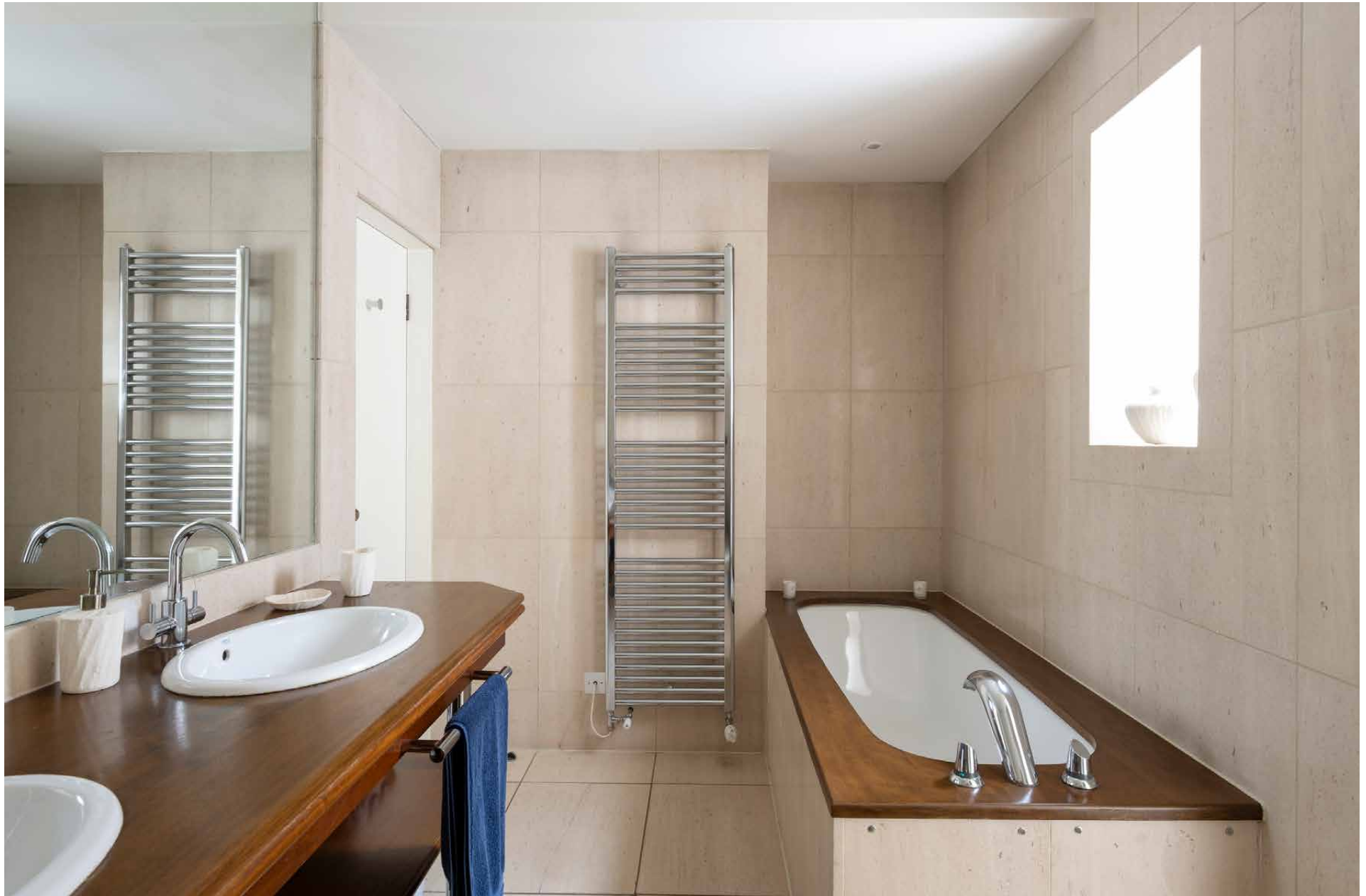


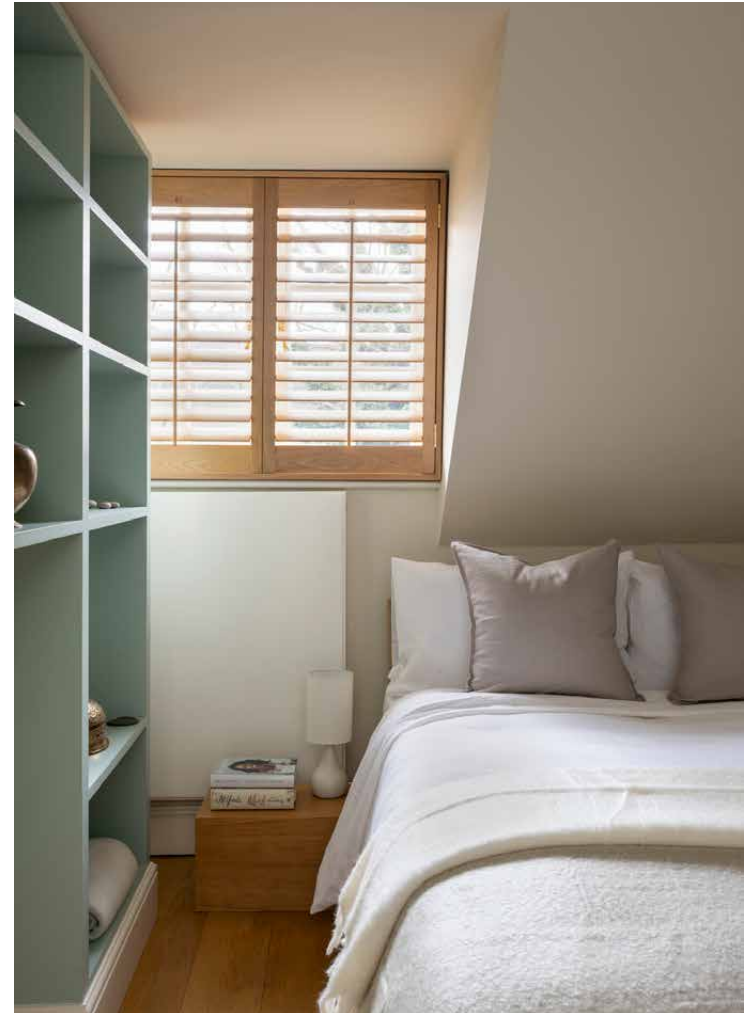


The calming principal suite is found on the first floor. Ample fitted storage and a sleek bathroom with dual vanity, a walk-in shower and separate bathtub create a compelling line up for kicking back. Across the corridor, a study filled with books and a dressing room add a further element of relaxation. Three further bedrooms occupy the second floor – each as comfortable as the next – served by a family bathroom.















LOCATION

A momentary break from the bustle of the King's Road, the best of Chelsea awaits here.

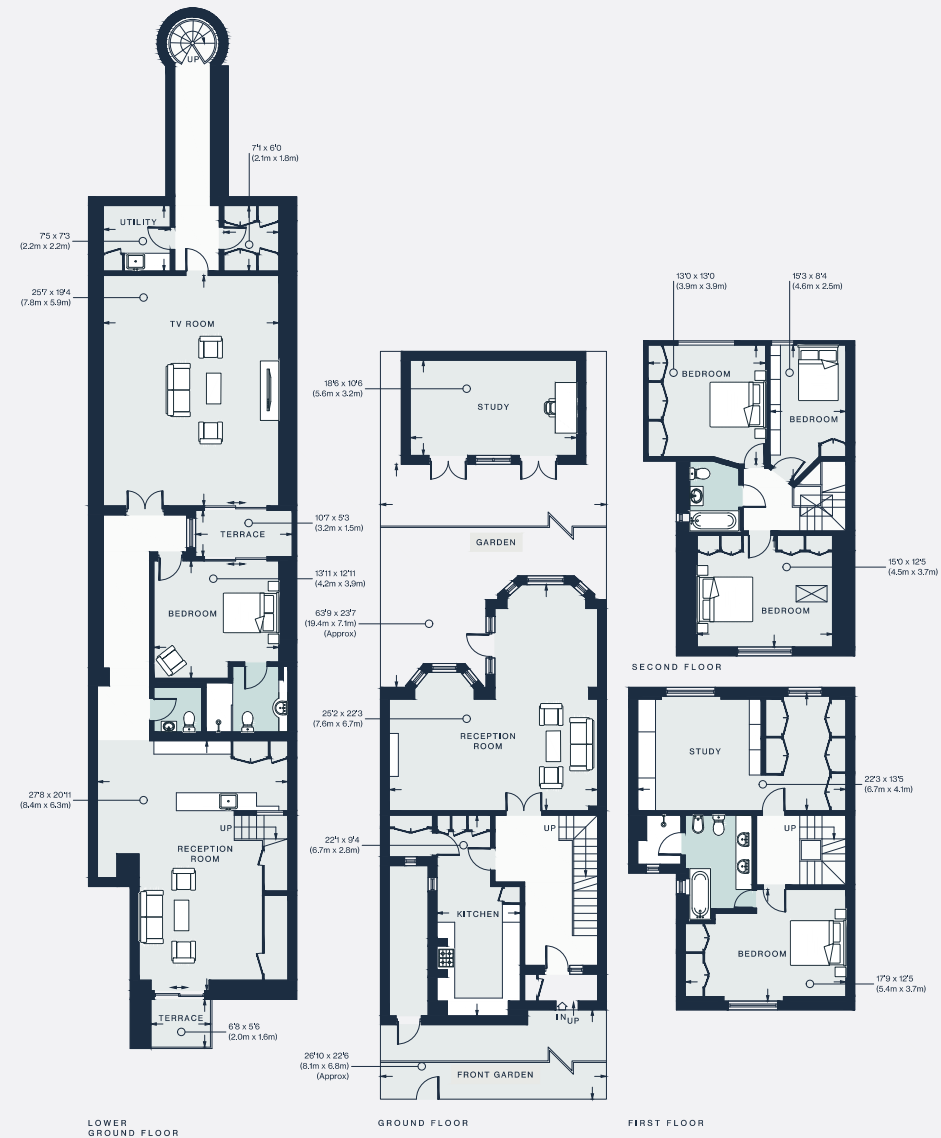
Designer boutiques, Michelin-starred restaurants and people watching potential – all on your doorstep. Good days start with a vinyasa flow session at Triyoga followed by brunch at Bluebird and an afternoon film screening at Everyman. Refresh your wardrobe before dinner at Medlar or Chicama. For special occasions, book a table at two-Michelin-starred Claude Bosi at Bibendum.





PROPERTY HIGHLIGHTS

- Open-plan reception and dining room
- Eat-in kitchen
- Cinema room
- Bar area and separate living room
- Principal suite
- Guest bedroom suite
- Three further bedrooms
- Family bathroom
- Study and dressing room
- Large, private garden
- Garden studio
- Walking distance to the Kings' Road



Lower Ground Floor = 1,808 sq ft / 168.0 sq m
Ground Floor = 857 sq ft / 79.6 sq m
First Floor = 701 sq ft / 65.1 sq m
Second Floor = 645 sq ft / 59.9 sq m
Outbuilding = 200 sq ft / 18.6 sq m
Total = 4,211 sq ft / 391.2 sq m

Floor plans are for illustrative purposes only and not to scale. Compliant with RICS code of measuring practice.



Please don't hesitate to get in touch if you have any questions or require any further information.

hello@domusstay.com

+44 (0)20 8168 8880

Domus Stay provides the perfect combination of property, place and personal service for the world's most remarkable people. If you have any questions, or if we can help in any way, please contact us on the above number. Be it about a property you have, a property you want, dates to check or any special requirements you may need, we'd love a chat.

