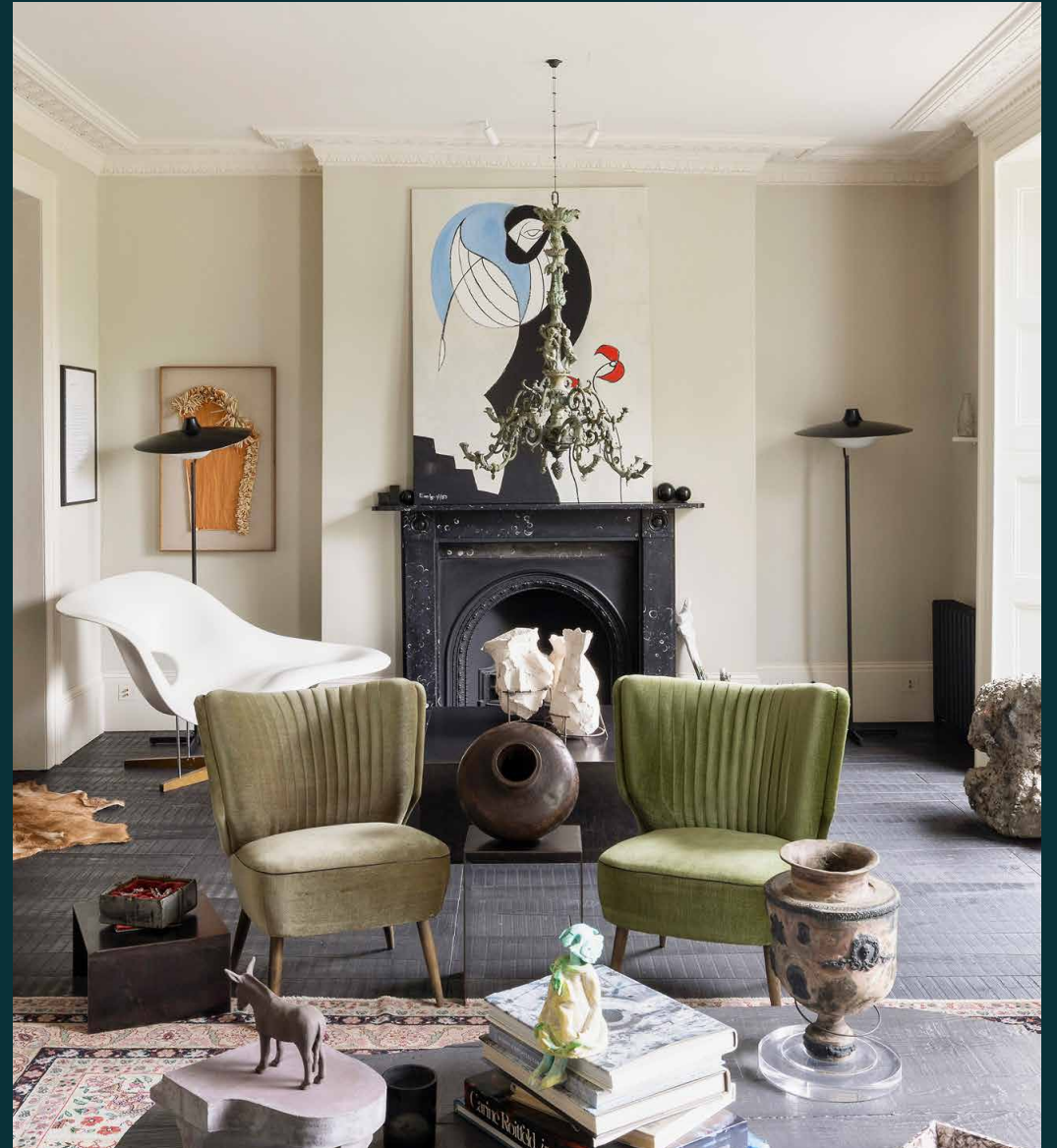


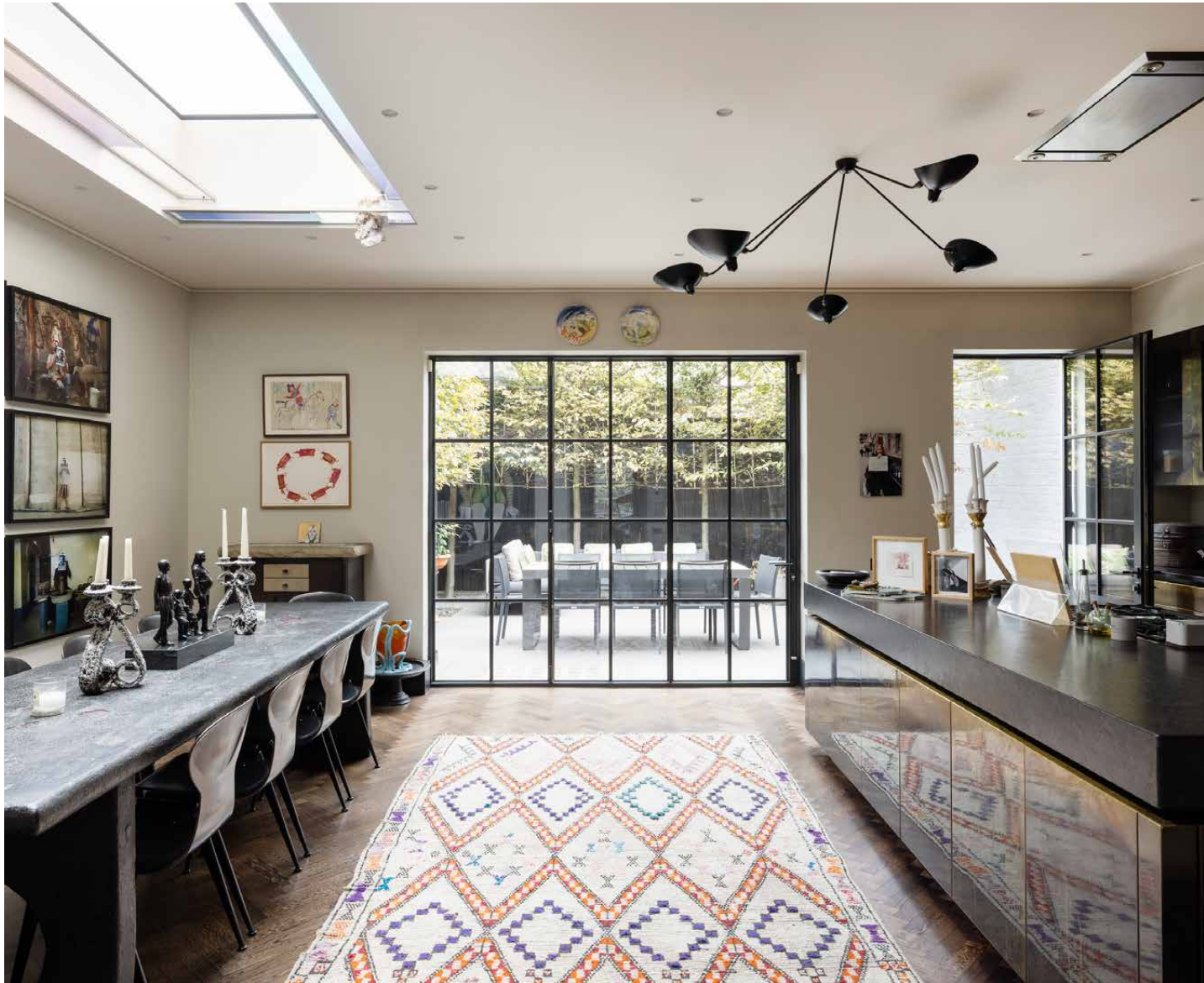
domus
stay.

Campden Hill Square

HOLLAND PARK

6 Bedrooms, 5 Bathrooms
For 12 guests





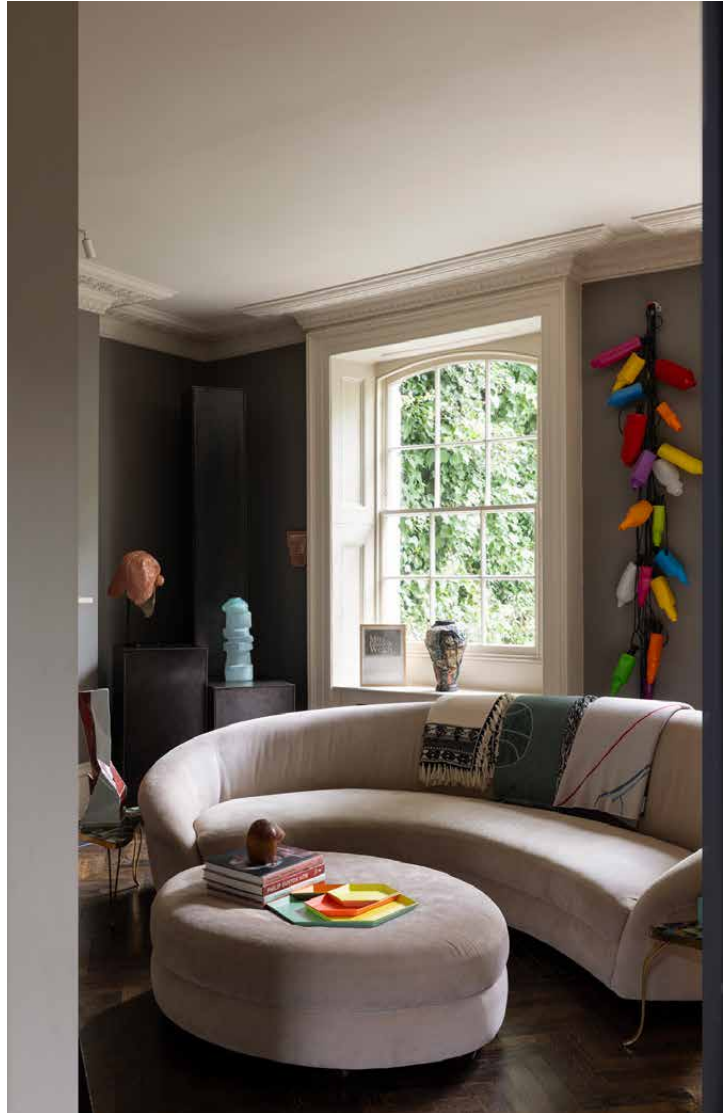
Interior designed and immersed in the arts, this six-bedroom Holland Park townhouse to rent is both home and creative canvas.

Years in the making, this remarkable house channels the soul of a gallery. Collaboratively designed with JamesPlumb studio, its interiors mirror the lives of its creatively inclined owners – a collection in constant motion. The resulting setting is as poetic as it is practical, complete with multiple reception rooms, a library, home cinema and private garden.



The living spaces

The entrance hall sets the tone: dark stone parquet grounds the space while contemporary artworks lift it skyward. In the family room, colour punctuates soft grey walls; a curved velour sofa invites quiet afternoons, whether spent watching films or admiring the ever-evolving art. Steel cabinetry conceals the essentials of daily life while acting as a pedestal for ceramics and sculpture.



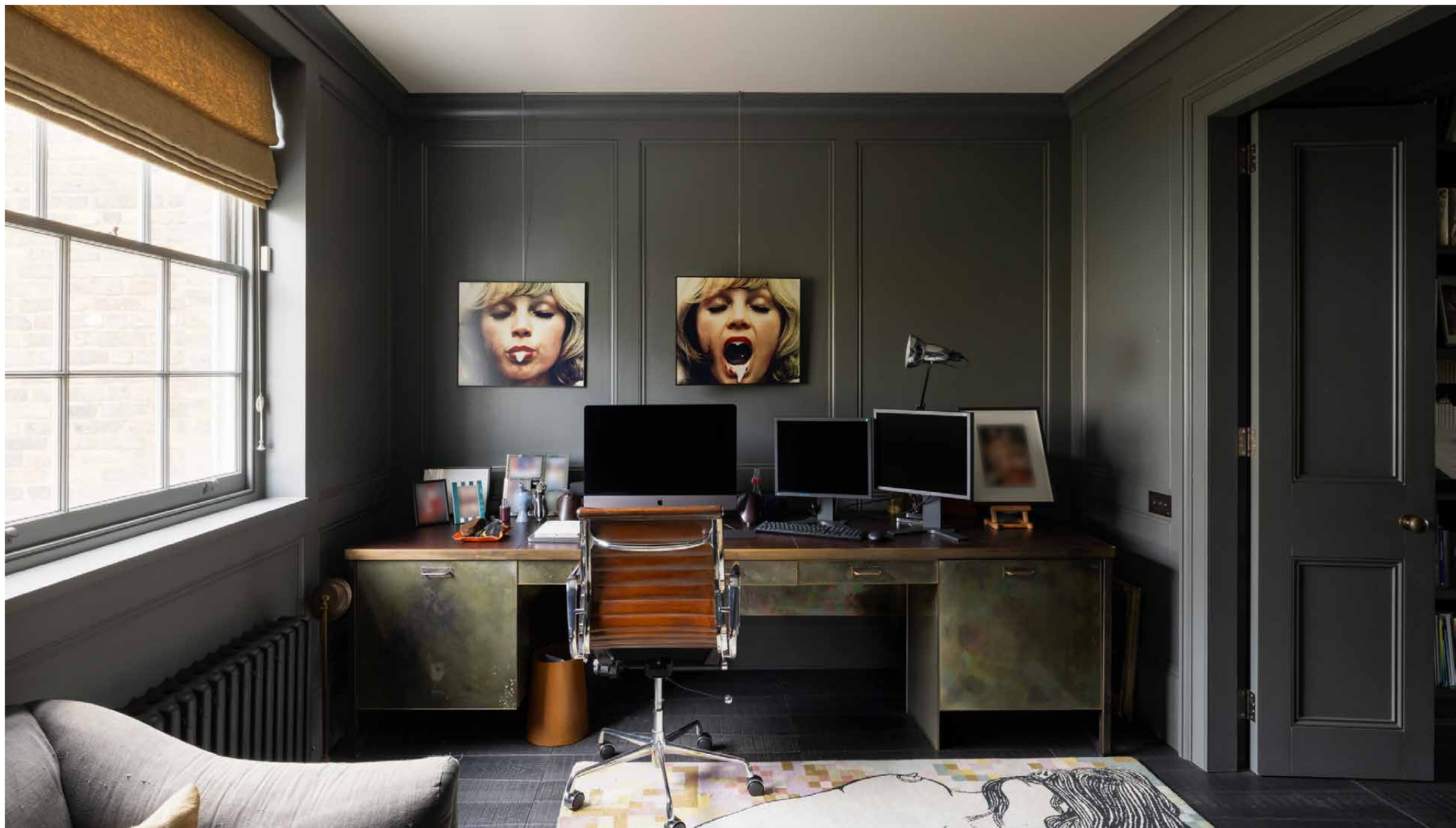


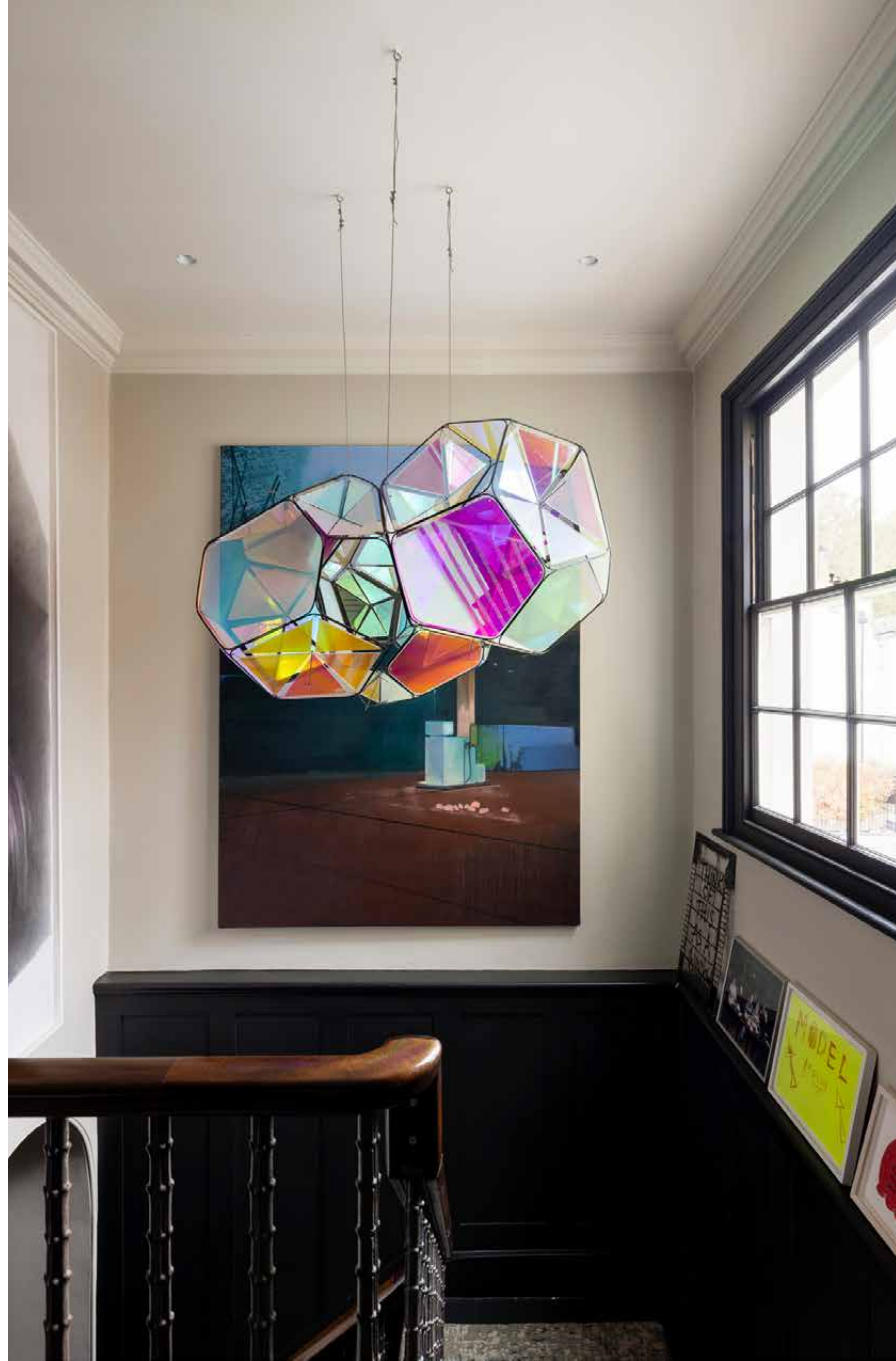
A stair runner woven from the remnants of an 18th-century tapestry leads upward to the living room, where earthy tones and influences find harmony. Recline on mid-century moss-green chairs or Fredrikson Stallard's Pyrenees – part sofa, part sculpture. Next door, the library's open shelves brim with paperbacks, with a central steel loveseat offering the perfect perch to browse them. A study just beyond features a leather desk for focused work. On the lower ground floor, a screening room wrapped in hand-dyed velvet transforms movie nights into cinematic immersion.

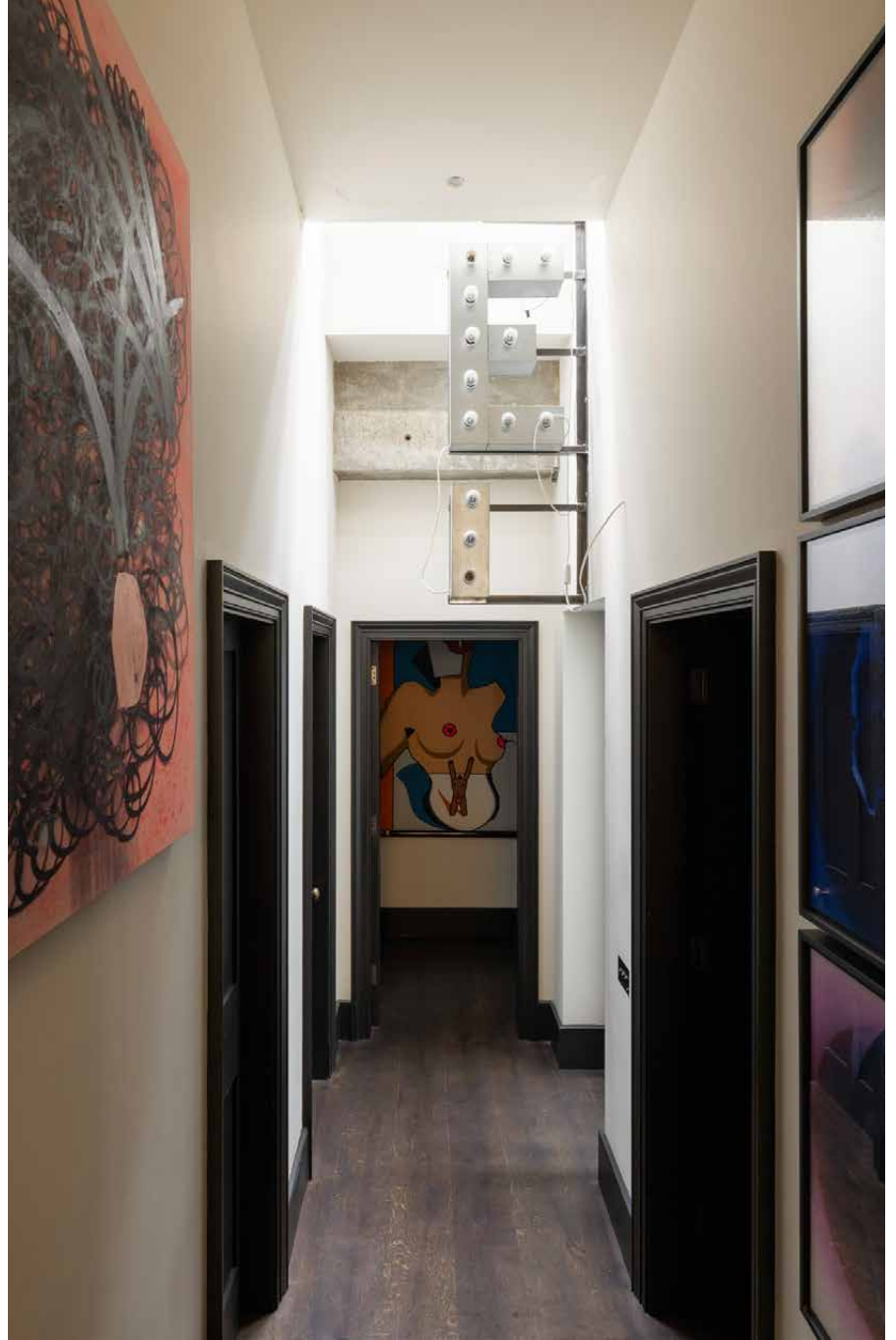












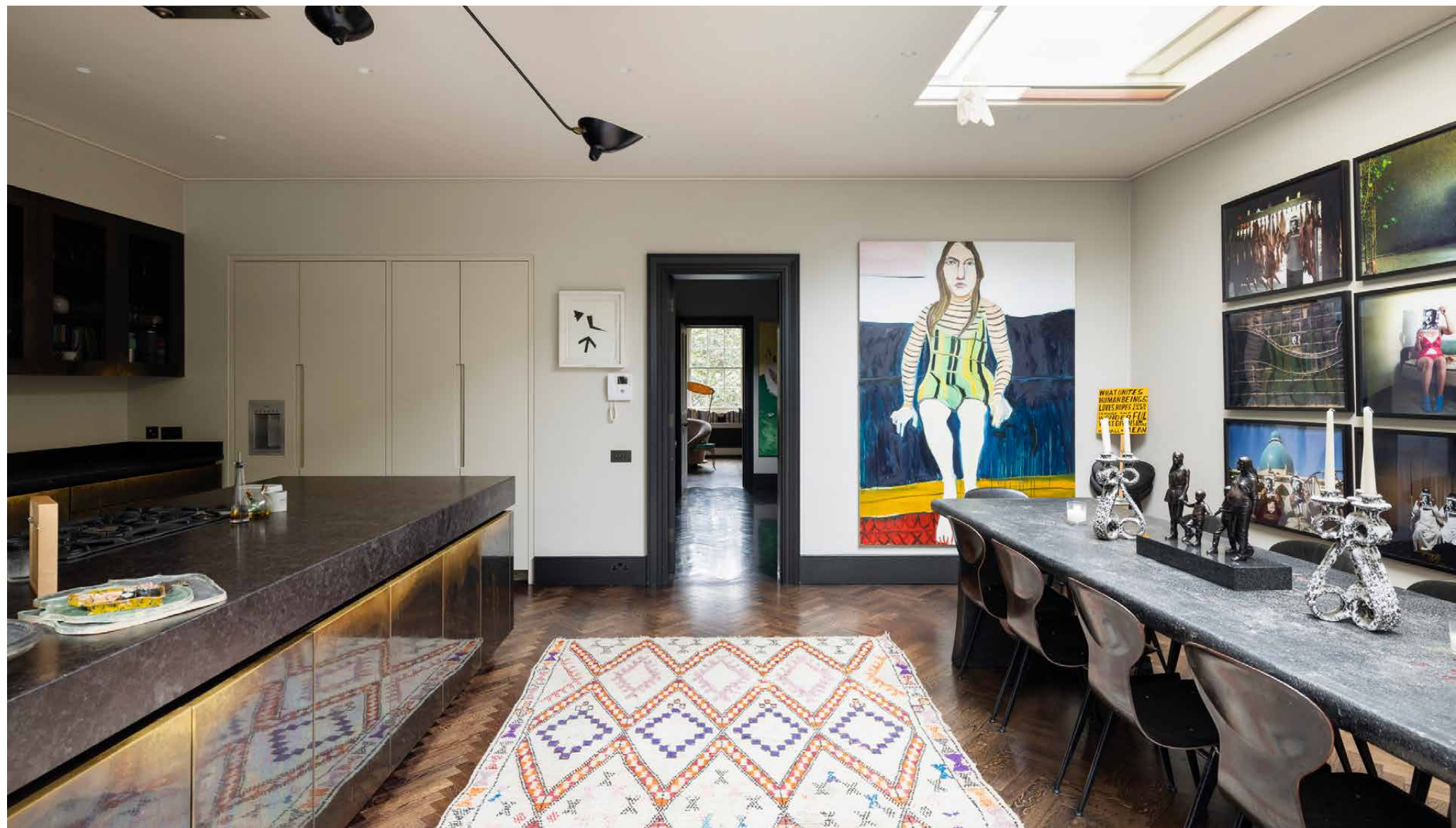


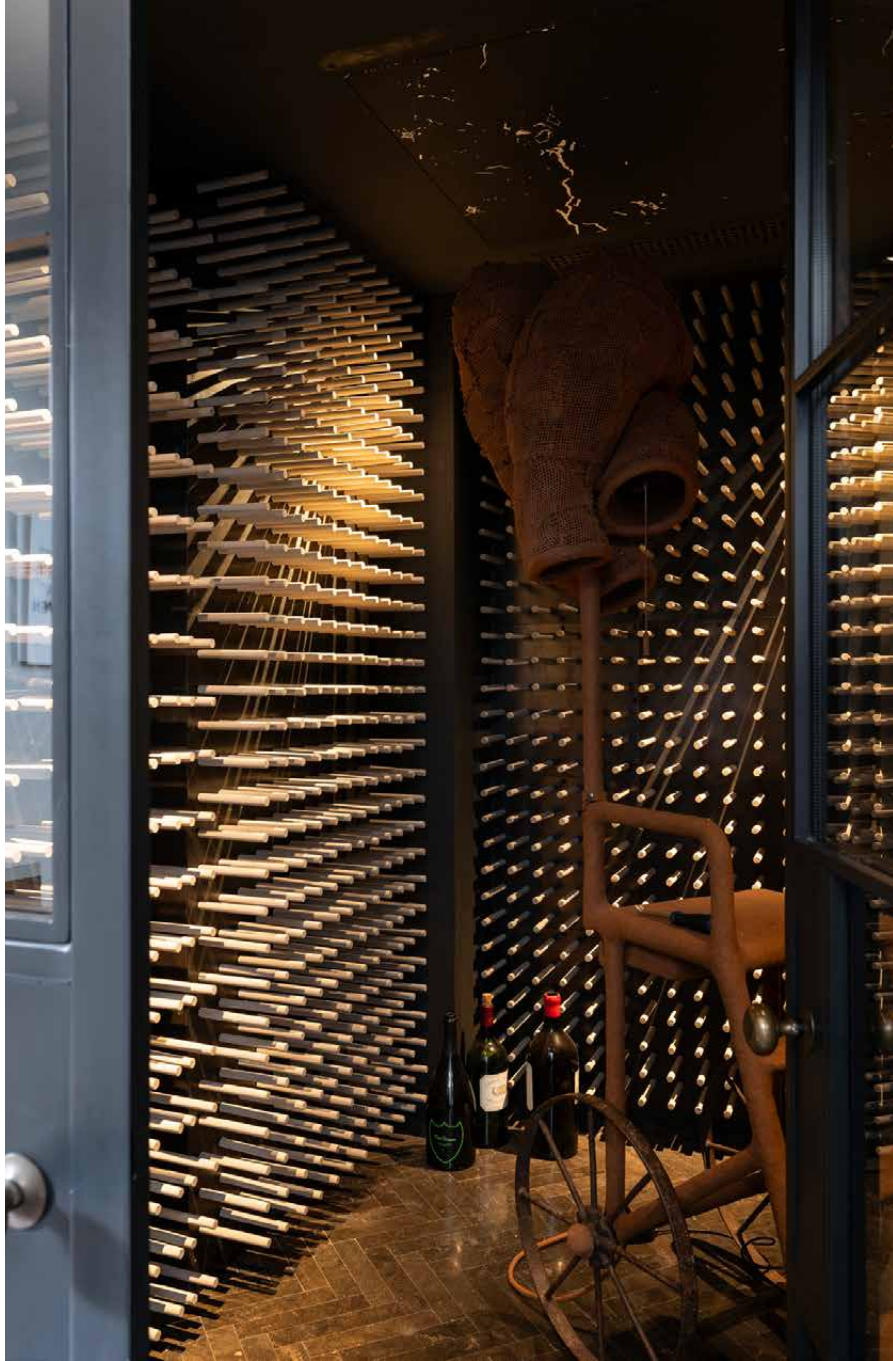


Kitchen & dining

A setting tailor-made to host, the kitchen and dining room blends artistry and function in equal measure. Patinated brass and textured stone introduce a moody depth, while skylights and artwork lend a lively counterbalance. At its centre, a ten-seat Japanese dining table is set up to host. Crittall glazing folds open to the garden, while a theatrical wine cellar lies nearby – with two thousand concrete pegs emerging to hold the collection.





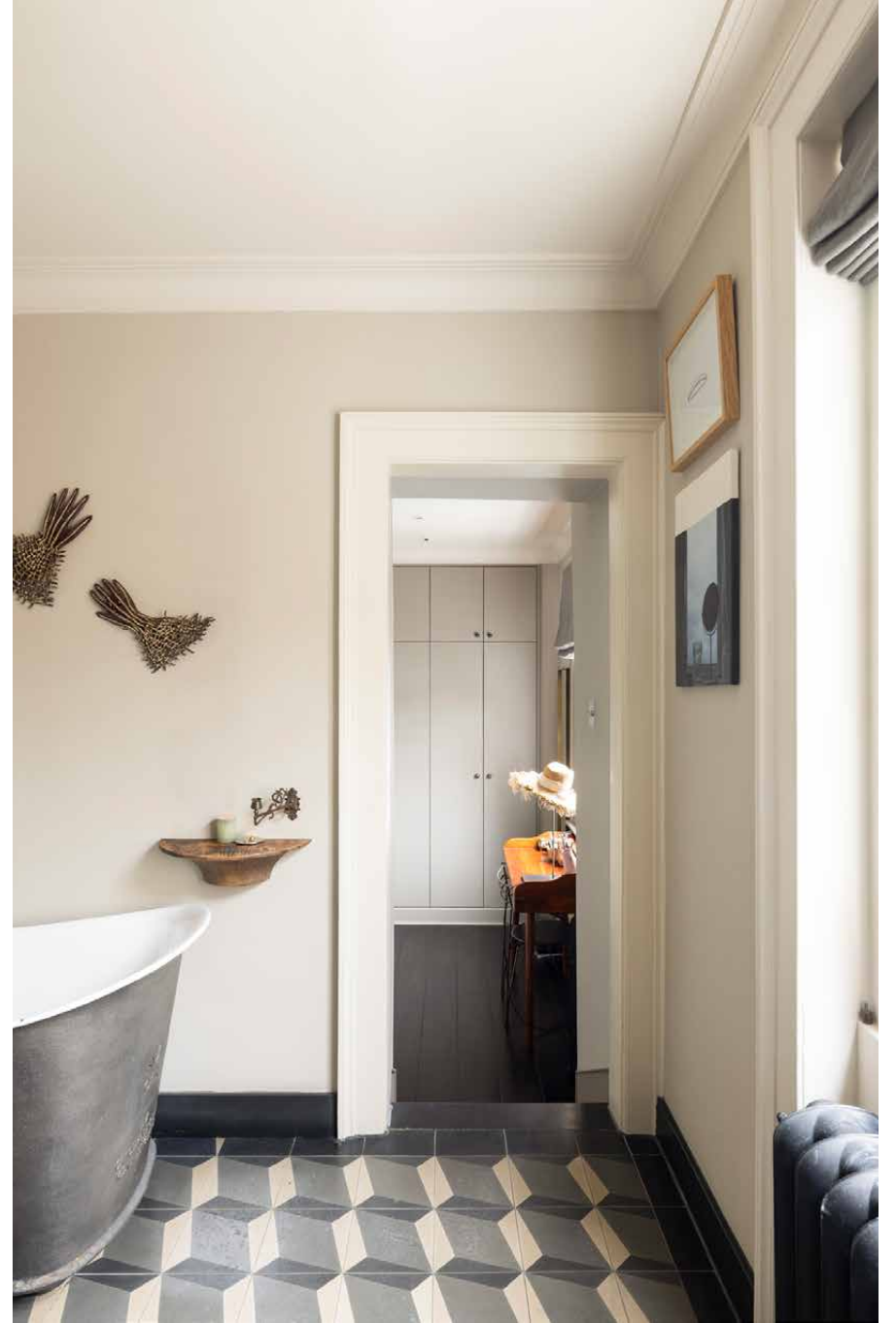


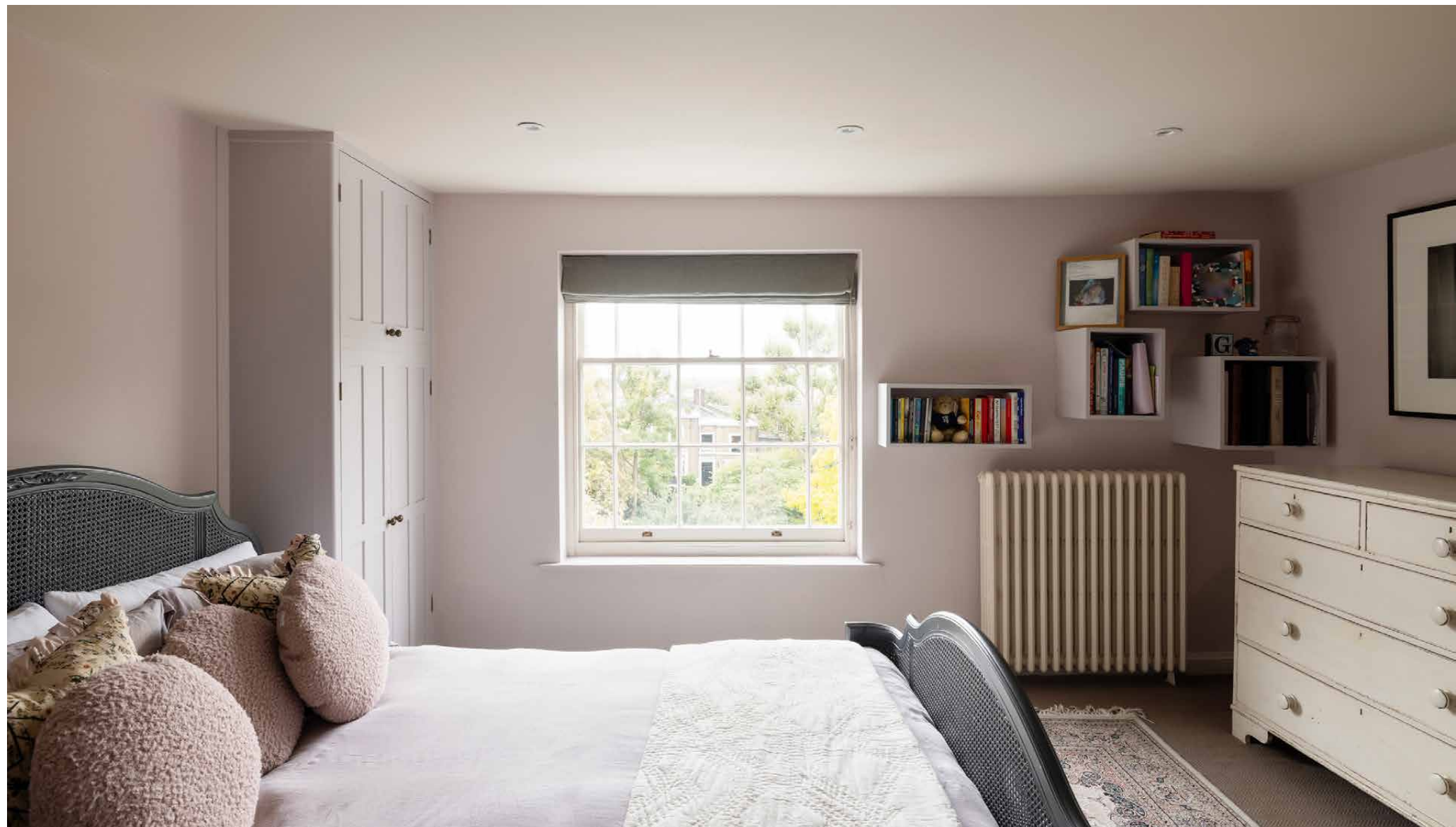


Bedrooms & bathrooms

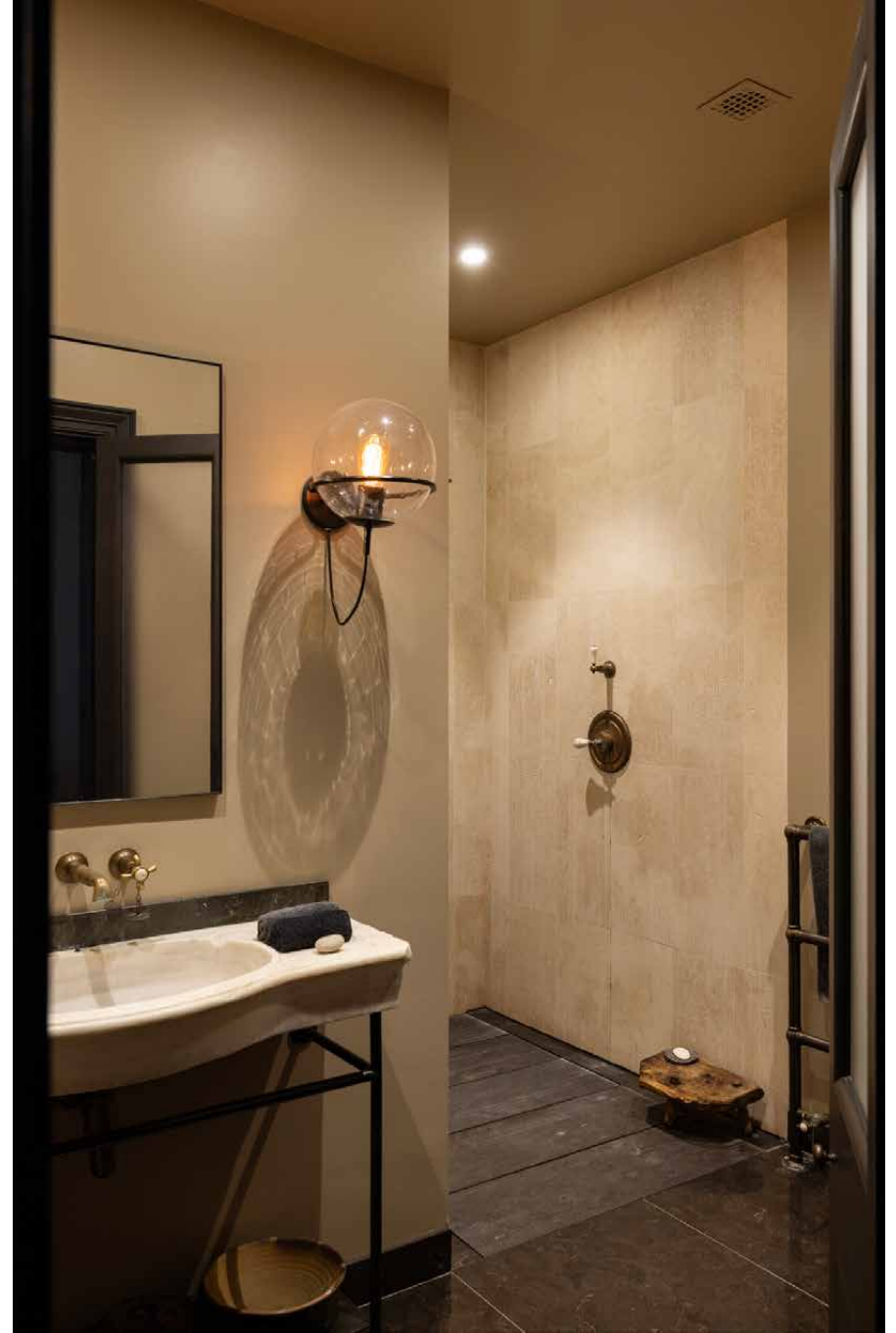
Upstairs, the principal bedroom strikes a quieter note. A bespoke bed, split and re-centred around a grandfather clock, takes pride of place. Mirrored storage amplifies the light, while the adjoining bathroom continues the theme of curated craft. Five guest bathrooms echo the same sensibility – thoughtful design, natural light and considered furnishings.







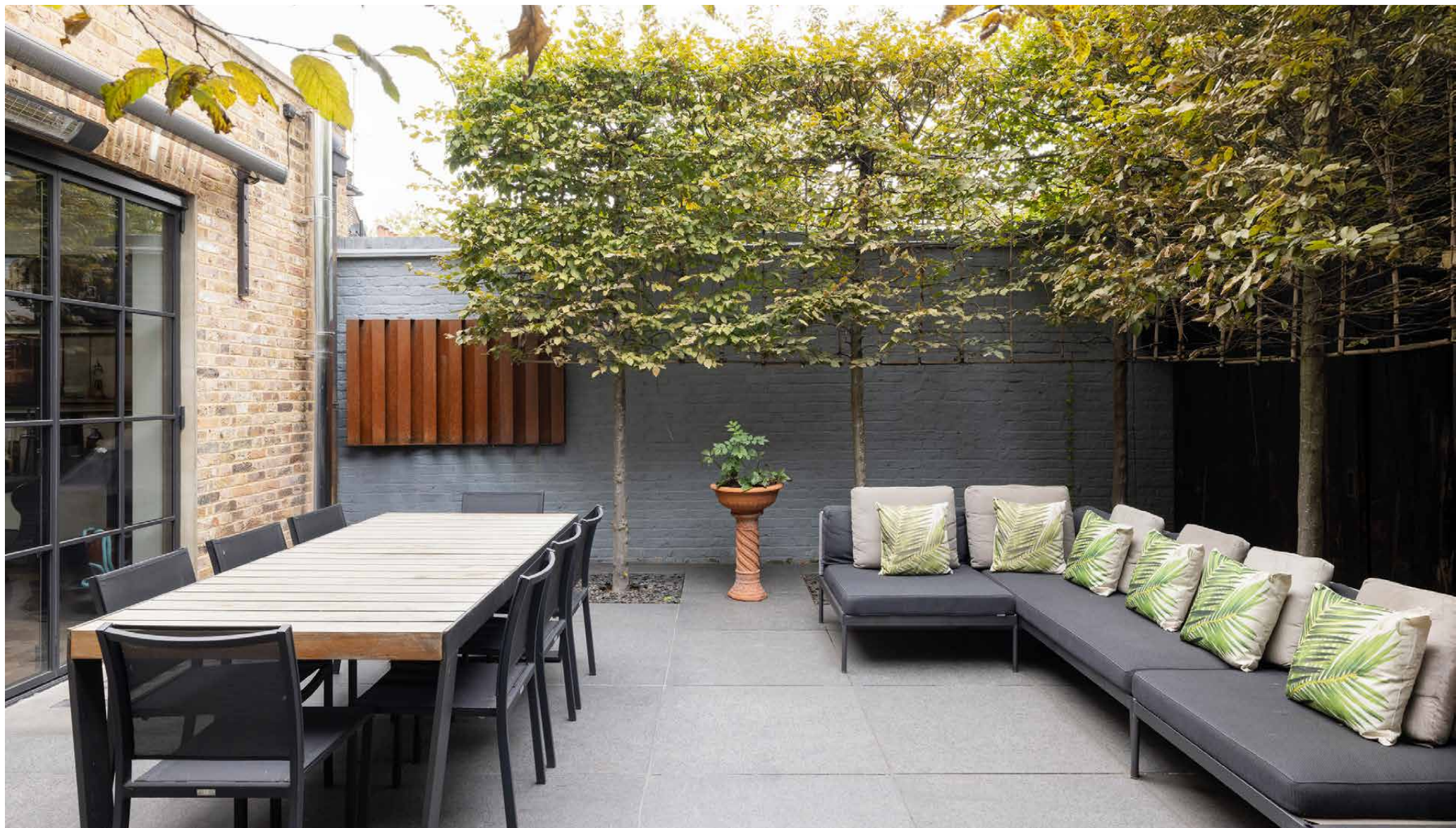




Outdoor space

Accessed via the dining room's Crittall doors, the patio garden offers a calm counterpoint to the intensity within. Walled for privacy, there's space to recline and soak up London's summer sun, or host alfresco affairs at the outdoor dining table. There's also access to the square's communal garden: an enclosed stretch of lawn exclusively for residents.

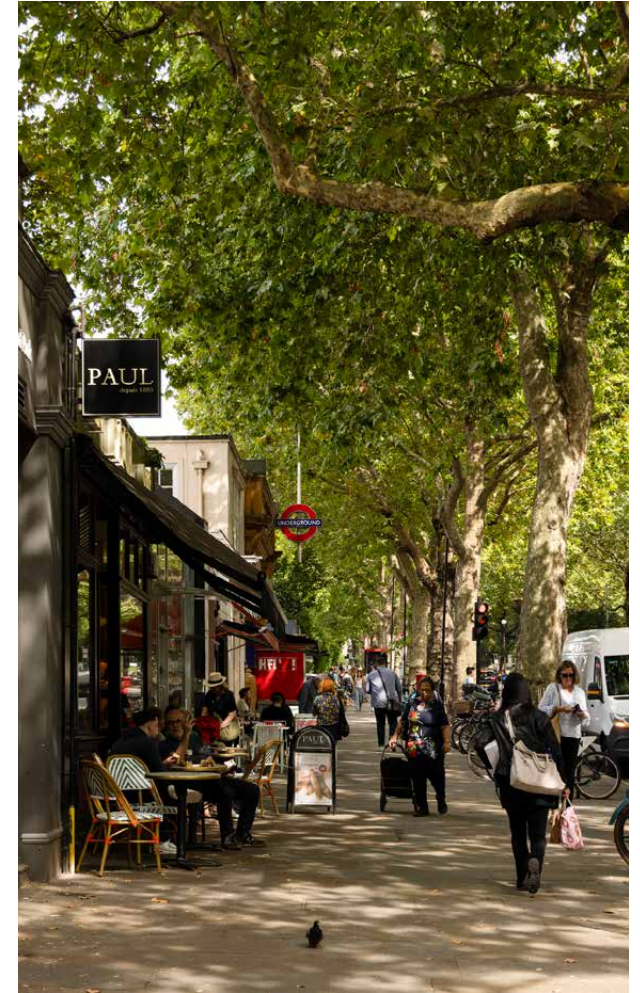


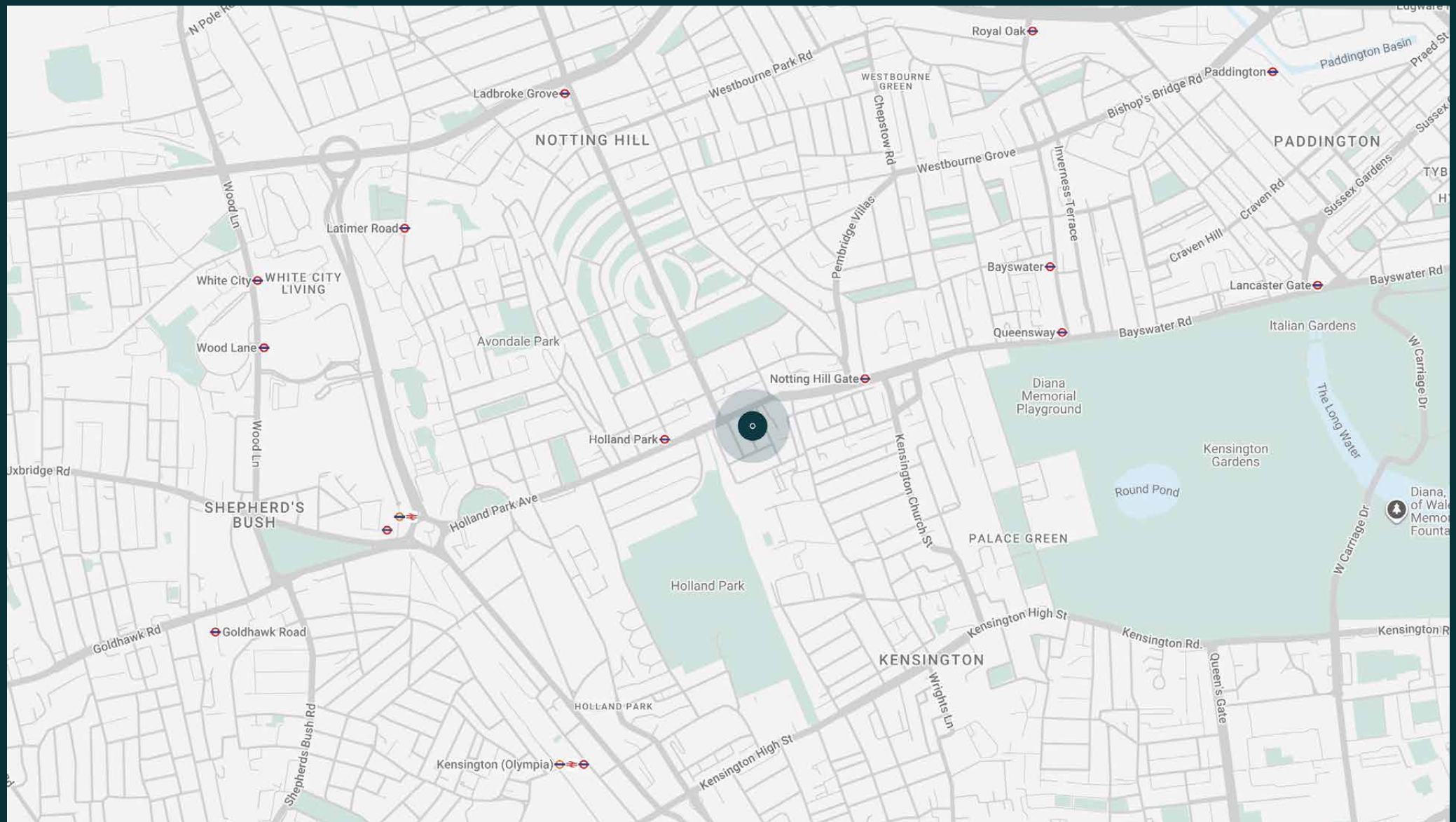




The neighbourhood

Found in a neighbourhood steeped in history and rich in culture, Campden Hill Gardens is on the doorstep to West London's most community-focused surroundings. Pick up a coffee to go from LIFT, then venture to the verdant lawns of Kensington Gardens or Holland Park. Kensington High Street is a short walk away for shopping and grocery offerings. Wander down to Kensington Church Street for antiques browsing, or up into Notting Hill for eclectic stalls and a film at the Electric Cinema or The Gate Picturehouse. Complete the evening with fine dining at local favourites Kitchen W8, Clarke's or Mazi.





Property features

- Interior design by JamesPlumb Studio
- Open-plan kitchen and dining room
- Two spacious reception rooms
- Principal bedroom suite
- Five further bedrooms
- Four further Bathrooms
- Private patio garden
- Cinema room
- Library room
- Study
- Wine cellar
- Communal garden access
- Royal Borough of Kensington and Chelsea

Approx. 4,931 sq ft / 458 sq m



Approx. Gross Internal Area = 4931 sq ft / 458.2 sq m

Floor plans are for illustrative purposes only and not to scale. Compliant with RICS code of measuring practice.
Prepared for Domus Stay. Copyright © All Rights Reserved.

Guest & concierge services

Our concierge team are here to help guests settle in, seamlessly. Centre court tickets to Wimbledon, Premier League seats with the best views, Savile Row tailors on standby, or a private chef to cater to individual tastes – we aim to elevate every stay.

From the moment of booking with us, each guest has a single point of contact to finesse the details. Our statement spaces are just the starting point – to ensure everyone feels at home, our rates include:

-
- Weekly housekeeping
 - Flexible check-in/out
 - Luxury linens and Bamford toiletries
 - Legal compliance on all our homes
 - A personal welcome and arrival essentials
 - Unlimited access to guest services and tailored experiences
 - Professional inventory inspection before and after every stay
 - Access to a curated portfolio of sole agency properties





Please get in touch if you have any questions
or require any further information.

hello@domusstay.com

+44 (0)20 8168 8880

The property particulars are a guide not statements. Descriptions, photographs, and plans are for guidance only. The Property is offered "subject to contract and references". No warranties, representations, License or Tenancy is given by Domus Stay. Our full disclaimer together with trading names and our Privacy Policy is shown on our website

© Domus Stay 2025. All rights reserved.

