

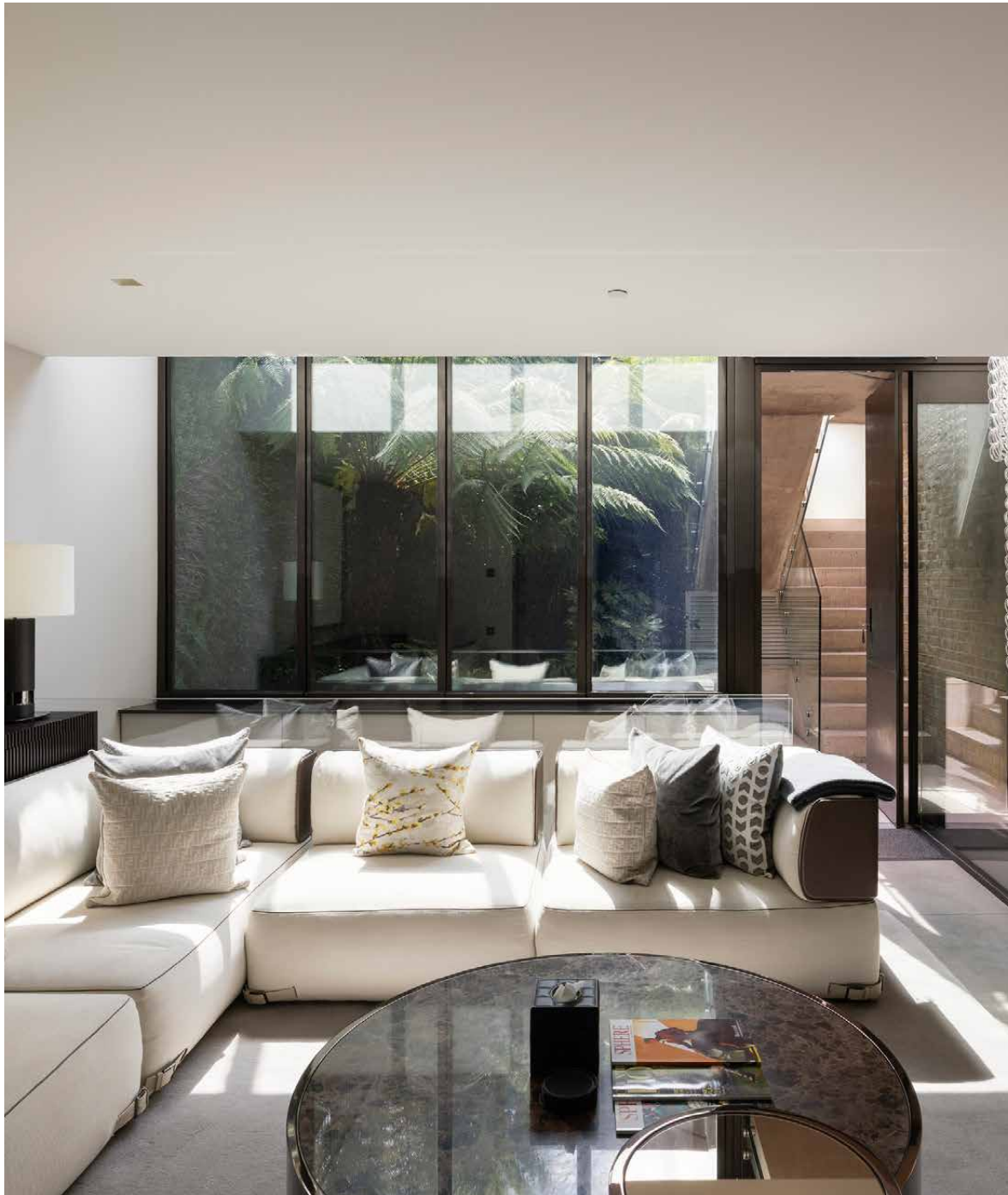


Brompton Square

Knightsbrige SW3

6 Bedrooms, 6 Bathrooms
For 12 guests





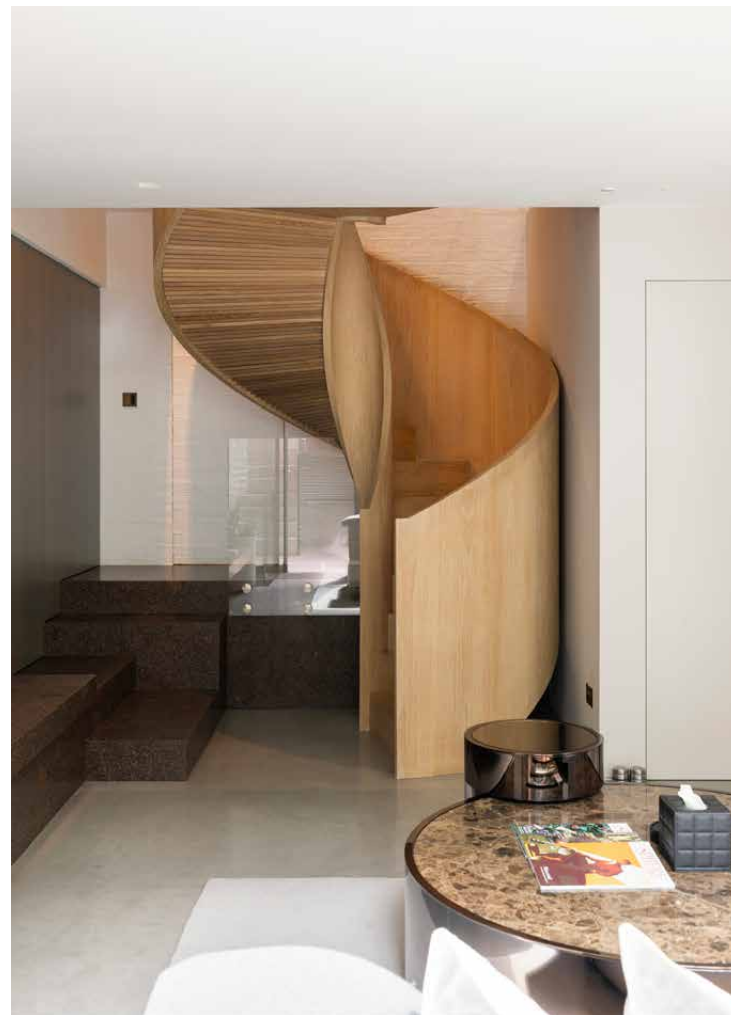
In this meticulously refurbished Knightsbridge townhouse, a showstopping blend of modern design and classic elegance plays out across nine floors.

Echoing its prestigious Knightsbridge postcode, this six-bedroom home exudes contemporary luxury with a refined interior palette, streamlined modern technologies and an abundance of natural light. It's easy to settle into the good life here, with nine spacious floors designed for entertaining and relaxation in equal measure.

Brompton Square's various social spaces – including a formal reception room, lounge, dining room, media room and contemporary kitchen – are all connected by either the passenger lift or a striking spiral staircase, features that demonstrate the home's flawless architectural character. With interior design by Fendi, there's a sophisticated feel to these spaces: think mirrored and geometric wall panelling, crystal chandeliers, ambient lighting and thoughtfully curated furnishings.

The bespoke kitchen is tailor-made for culinary creativity, centred by a stylish marble island. Gather friends for long weekend brunches, elegant dinner parties, or warm-weather drinks on the raised west-facing terrace – which has stunning vistas of the Brompton Oratory Church and the Holy Trinity Church. For a secluded alfresco spot, head to the calming roof terrace at the top of the home. Wellness is prioritised on the lower-ground floors, with a swimming pool, fully-equipped gym, sauna and jacuzzi.







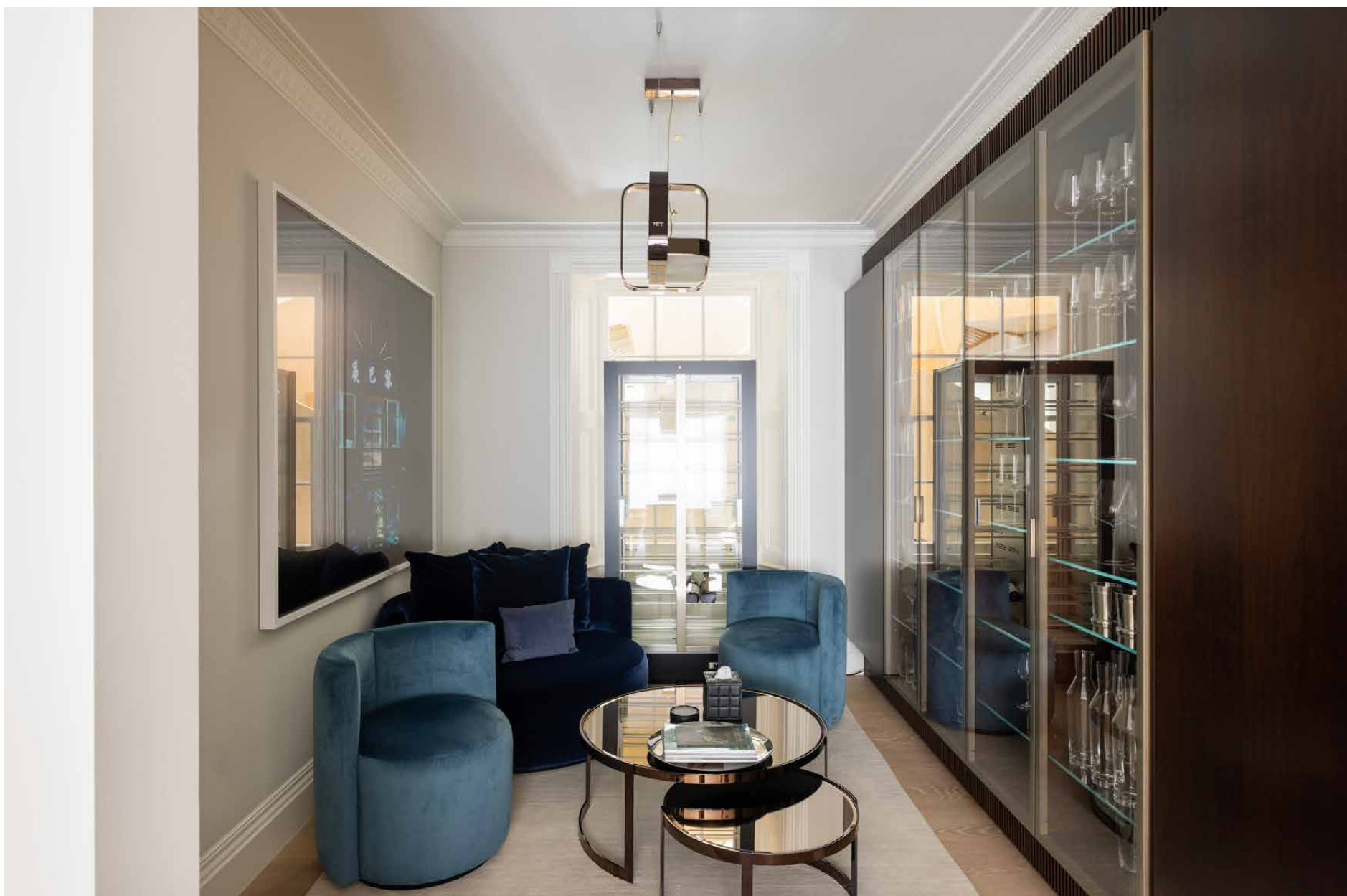
Mirrored panelling, contemporary artwork, plush seating and sleek tables all contribute to an aesthetically-engaging environment.

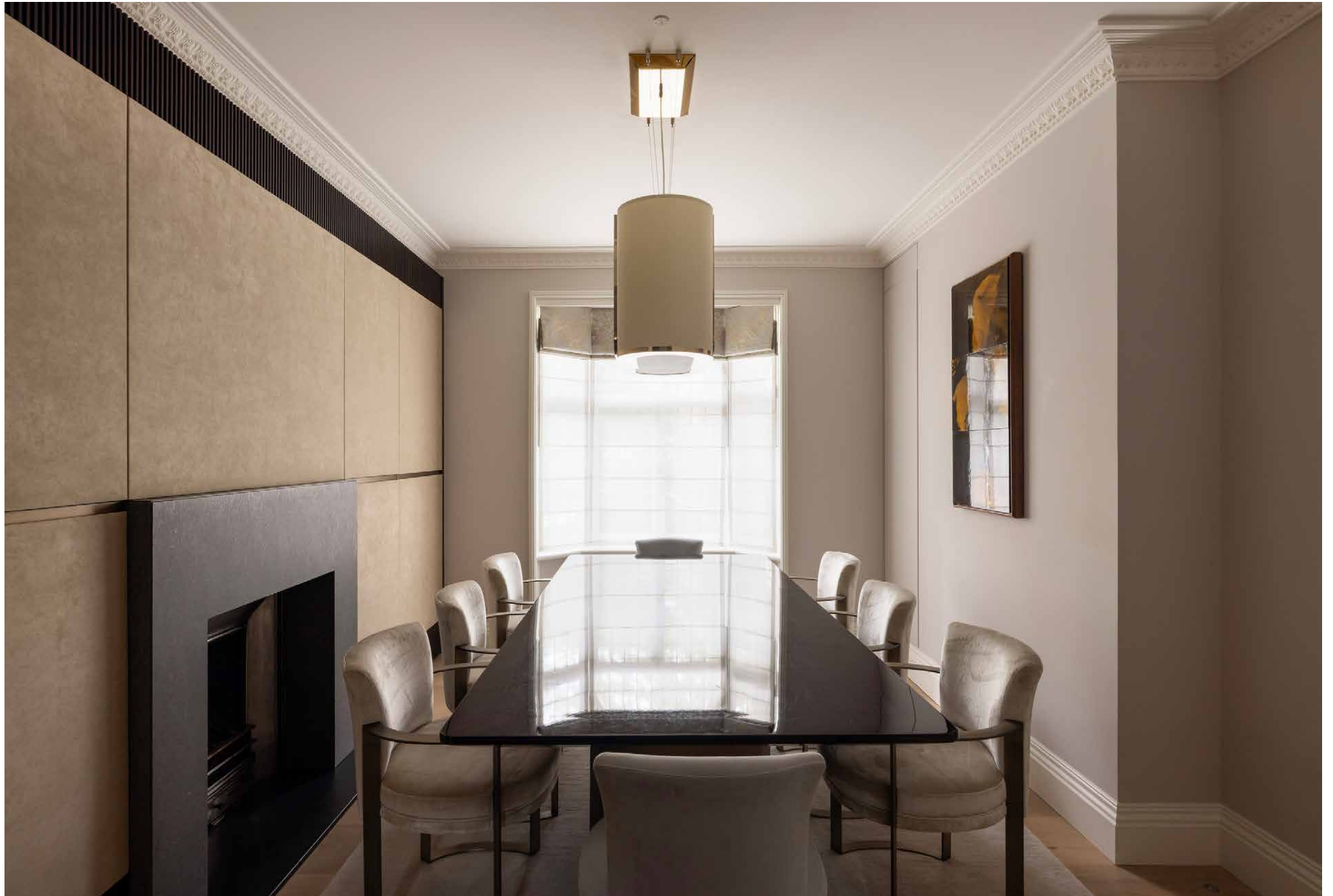


“

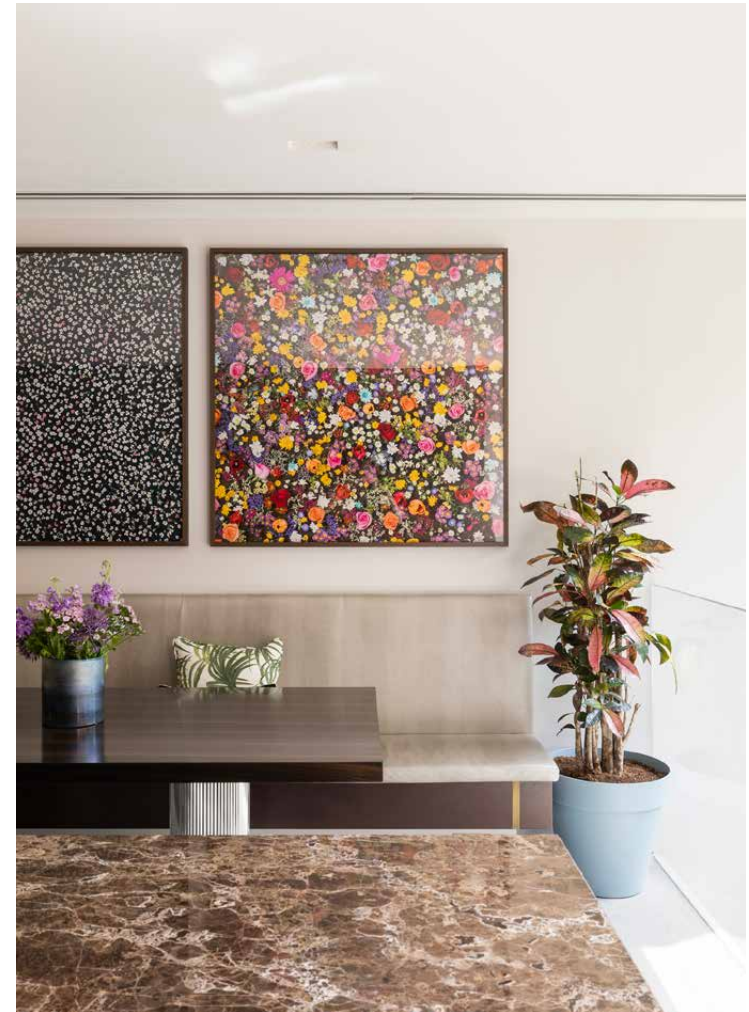
Spread across the two lower-ground floors, there's a dedicated media room, private swimming pool, sauna, jacuzzi and gym for all the family to enjoy.

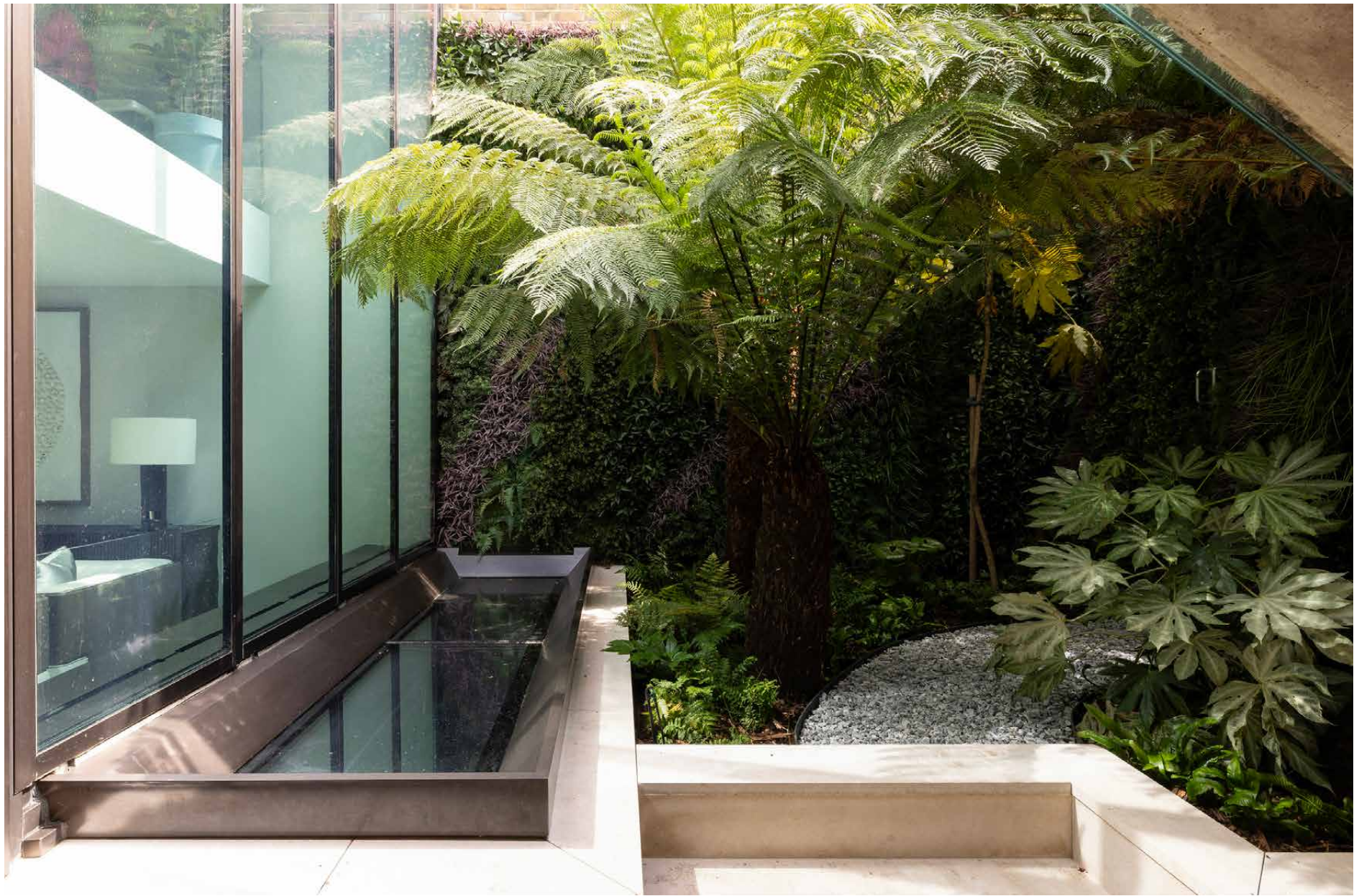












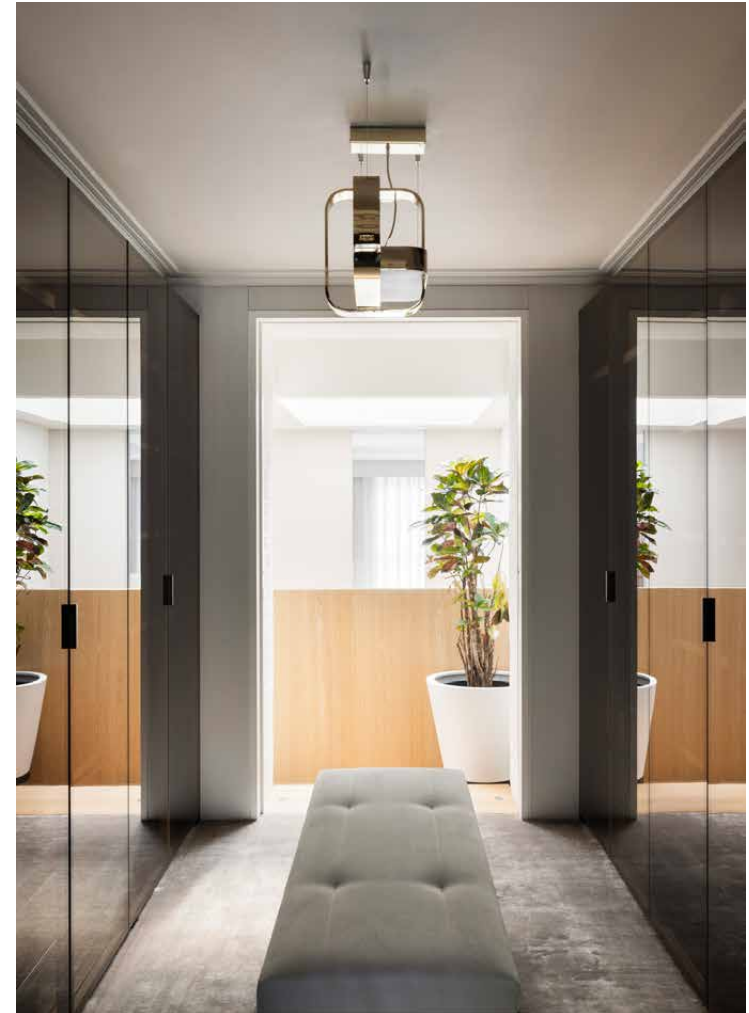


Serene and sophisticated, the principal bedroom is a masterclass in luxury craftsmanship. Sunlight filters through sheer curtains, enhancing the room's soothing palette of warm neutrals. Head through to the handsome dressing room, with rows of glass-fronted wardrobes that are perfect to store new-found pieces. As for the en suite bathroom, a sculptural freestanding tub stands boldly in the centre of the room, flanked on either side by a marble dual vanity and fireplace. Family and guests can relax and rejuvenate in the five additional bedroom suites, each showcasing the home's distinguished interiors. The fifth floor contains a kitchenette linking to the roof terrace, offering private cooking facilities for staff and long-term guests.

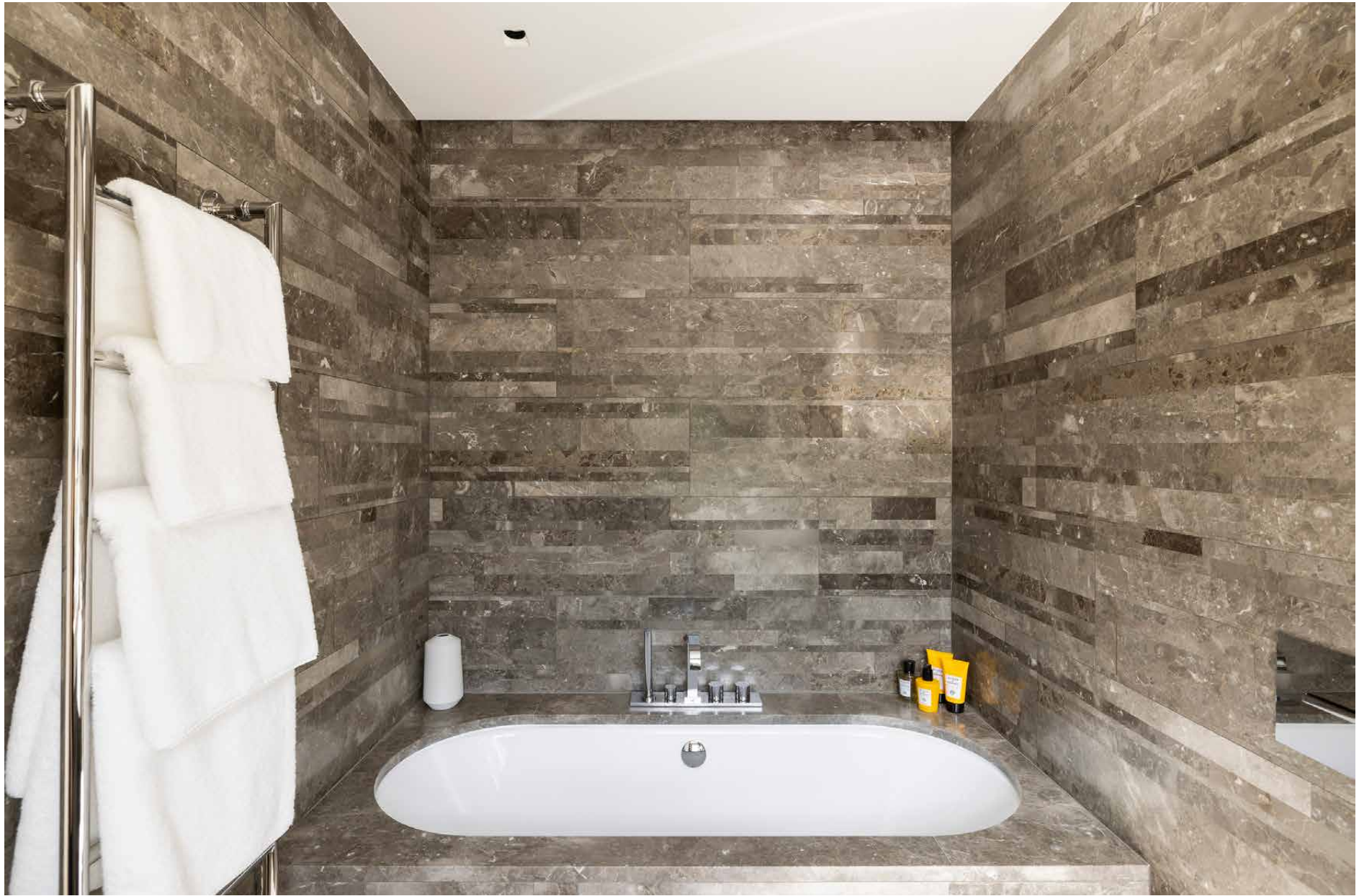




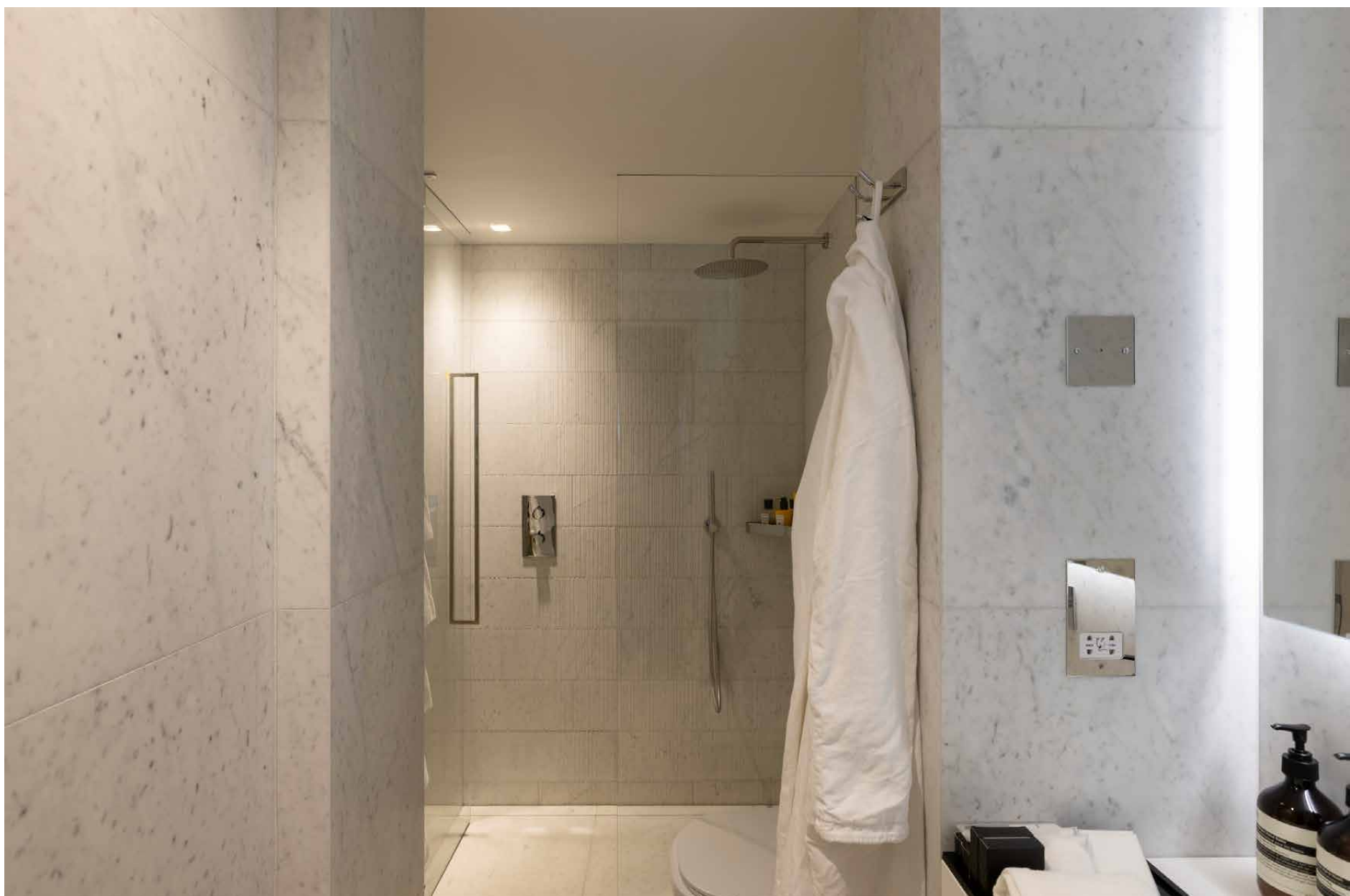




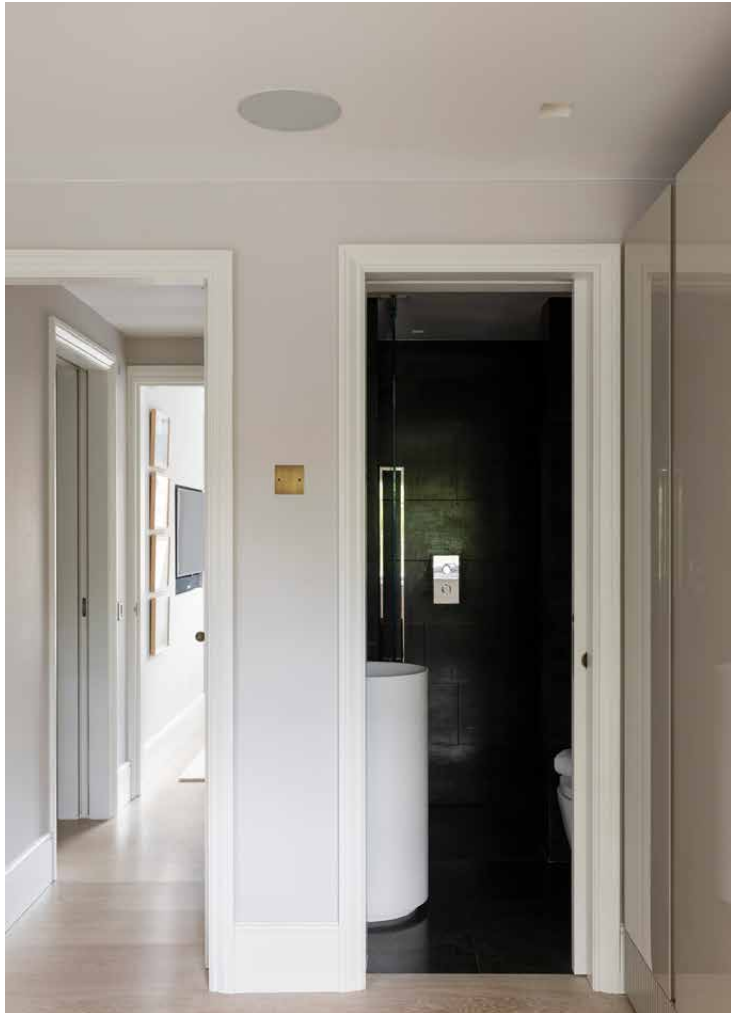








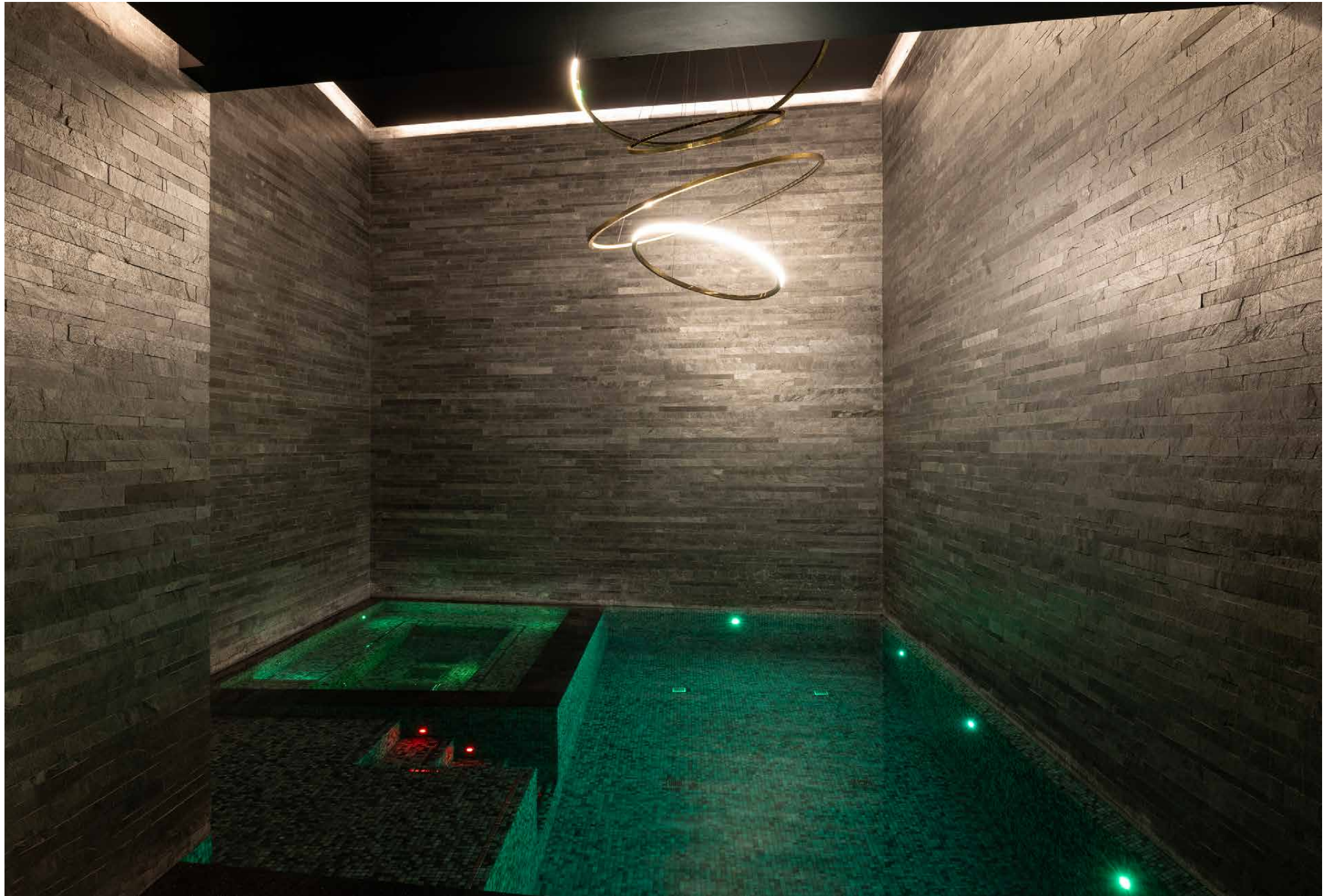


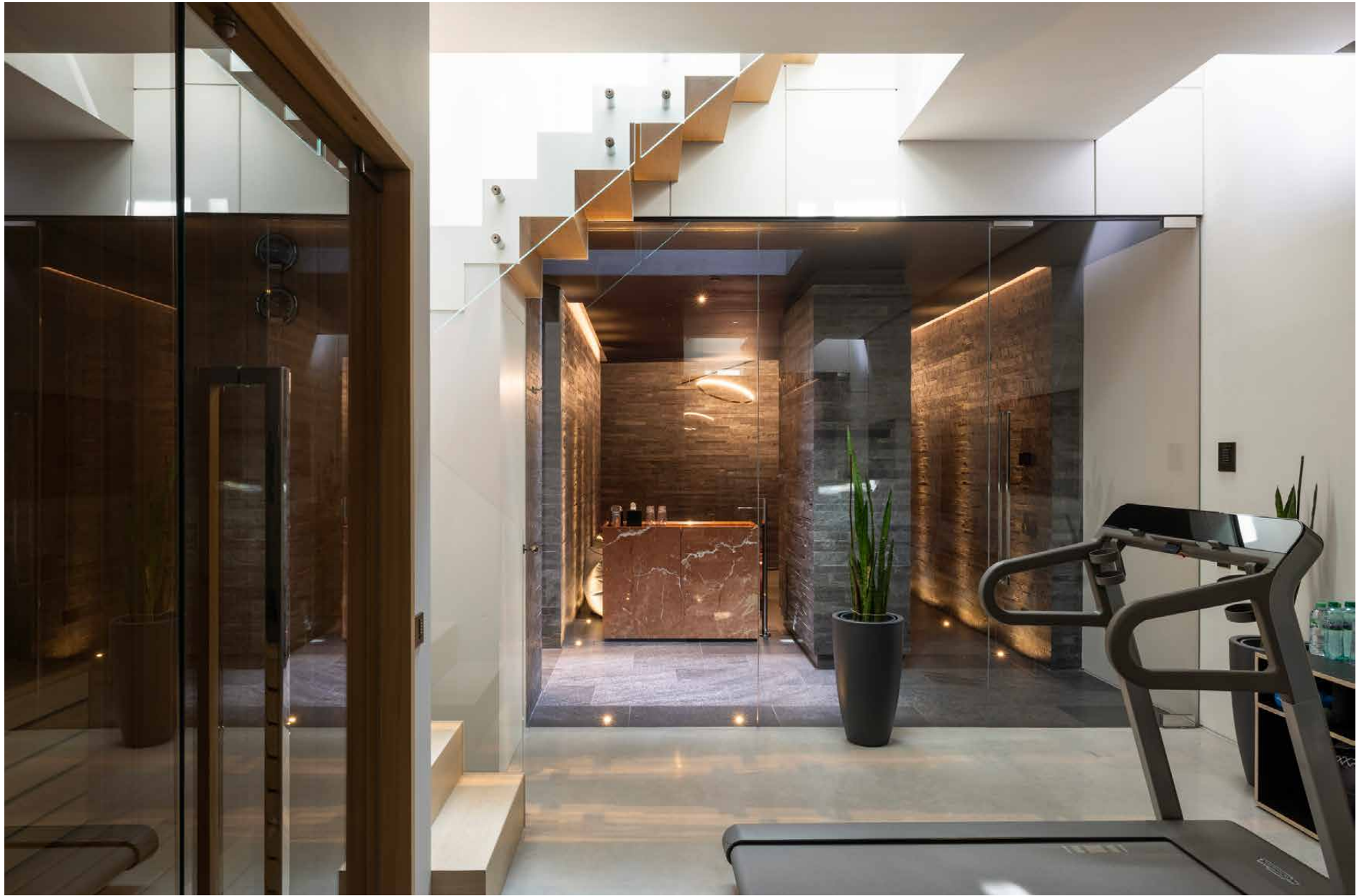








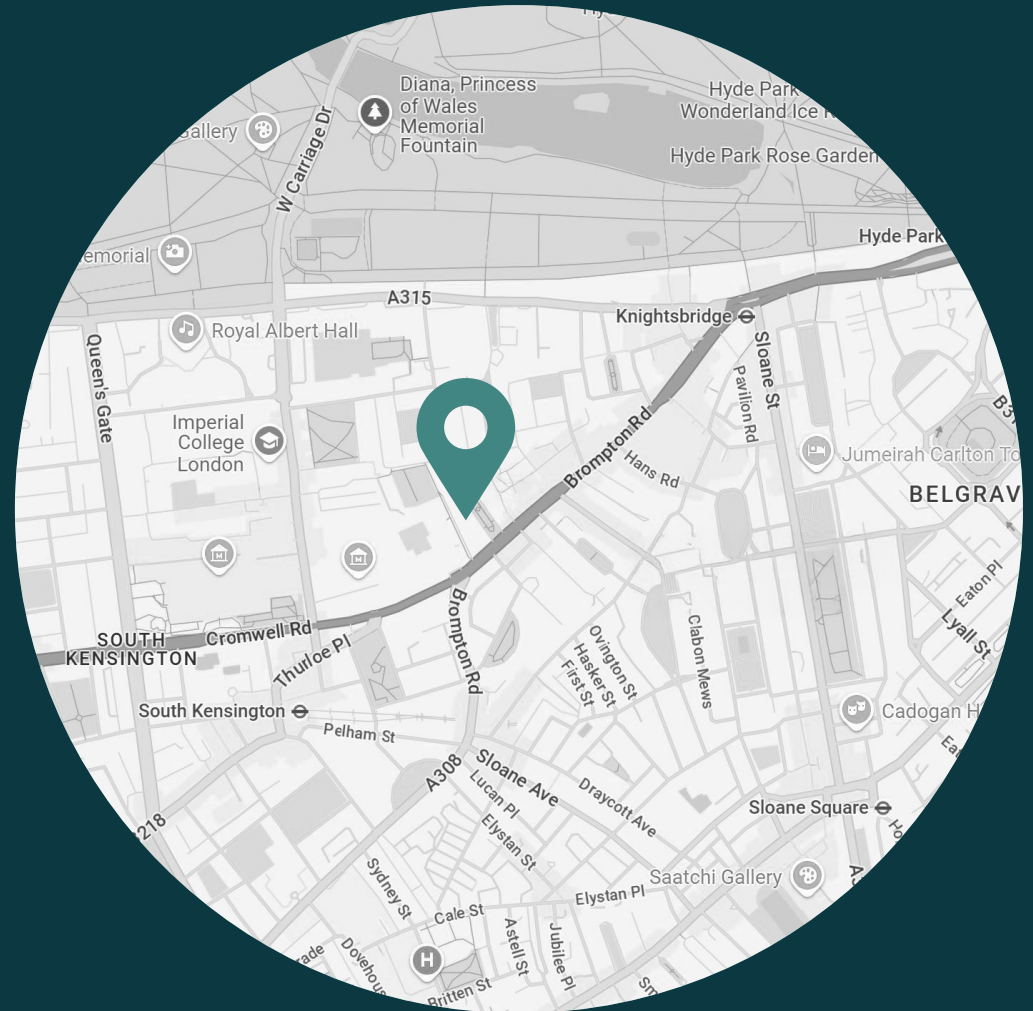




LOCATION

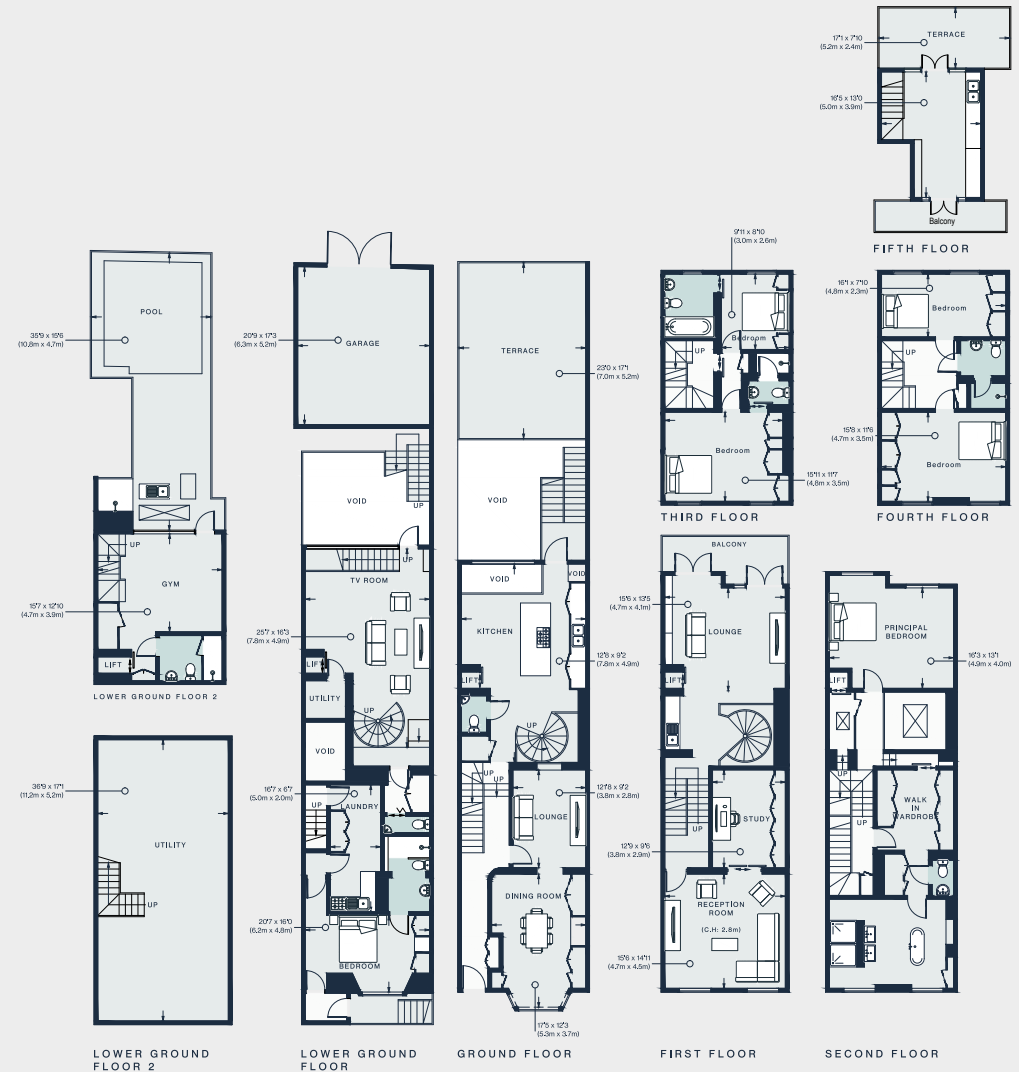
Nestled in the heart of London's prestigious Knightsbridge district, Brompton Square has enviable access to the area's best luxury shopping, fine dining and cultural landmarks.

Just a short stroll away is Hyde Park, one of the capital's eight Royal Parks. Enjoy leisurely strolls, boating and swimming on the Serpentine Lake and horseback riding lessons. Whether you want to explore the treasures of Harrods and Harvey Nichols, or venture through the flagship designer stores along Brompton Road, this postcode is tailor-made for retail therapy. Spend a day hopping between the Victoria and Albert, Natural History and Science Museums, followed by food at Amaya, Gordon Ramsay's Pétrus or Dinner by Heston Blumenthal.



PROPERTY HIGHLIGHTS

- Two formal reception rooms
- Contemporary kitchen
- Dining room and lounge
- Media room
- Principal bedroom suite with dressing room
- Five guest bedroom suites
- Study
- Passenger lift
- Double integrated garage
- Private garden
- Roof terrace
- Swimming pool
- Jacuzzi and sauna
- Home gym
- Access to communal gardens
- Royal Borough of Kensington & Chelsea



Approx. Gross Internal Area = 5,569 sq ft / 517.4 sq m
 Garage = 353 sq ft / 32.8 sq m
 Total = 5,922 sq ft / 550.2 sq m
 (Including Lift & Excluding Void)

Floor plans are for illustrative purposes only and not to scale. Compliant with RICS code of measuring practice.



Please don't hesitate to get in touch if you have any questions or require any further information.

hello@domusstay.com

+44 (0)20 8168 8880

Domus Stay provides the perfect combination of property, place and personal service for the world's most remarkable people. If you have any questions, or if we can help in any way, please contact us on the above number. Be it about a property you have, a property you want, dates to check or any special requirements you may need, we'd love a chat.

