

domus
stay.

Bridge House

THE COTSWOLDS & COUNTRY

5 Bedrooms, 5 Bathrooms
For 10 guests





In the historic village of Bourton-on-the-water, this 17th-century farmhouse to rent brims with charm.

A Grade II listed home that strikes a balance between period character, modern-day comfort and family living.

Life slows to a gentler pace in Bourton-on-the-Water. Steeped in history, its honey-stone streets are lined with antiques shops, tearooms and traditional pubs. Close to the village's heart, this house stands quietly apart – a centuries old farmhouse that has evolved with sensitivity and style.

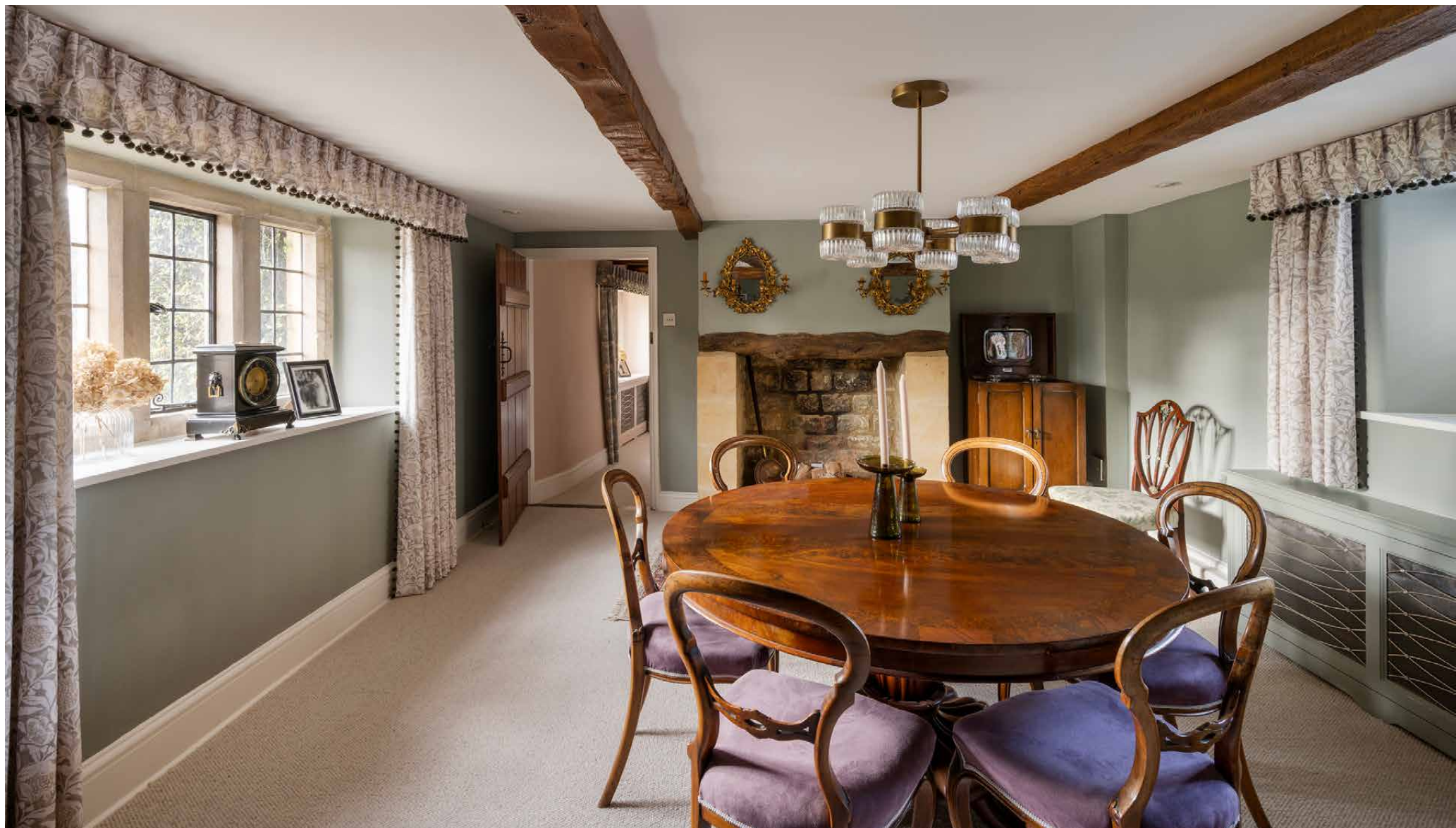


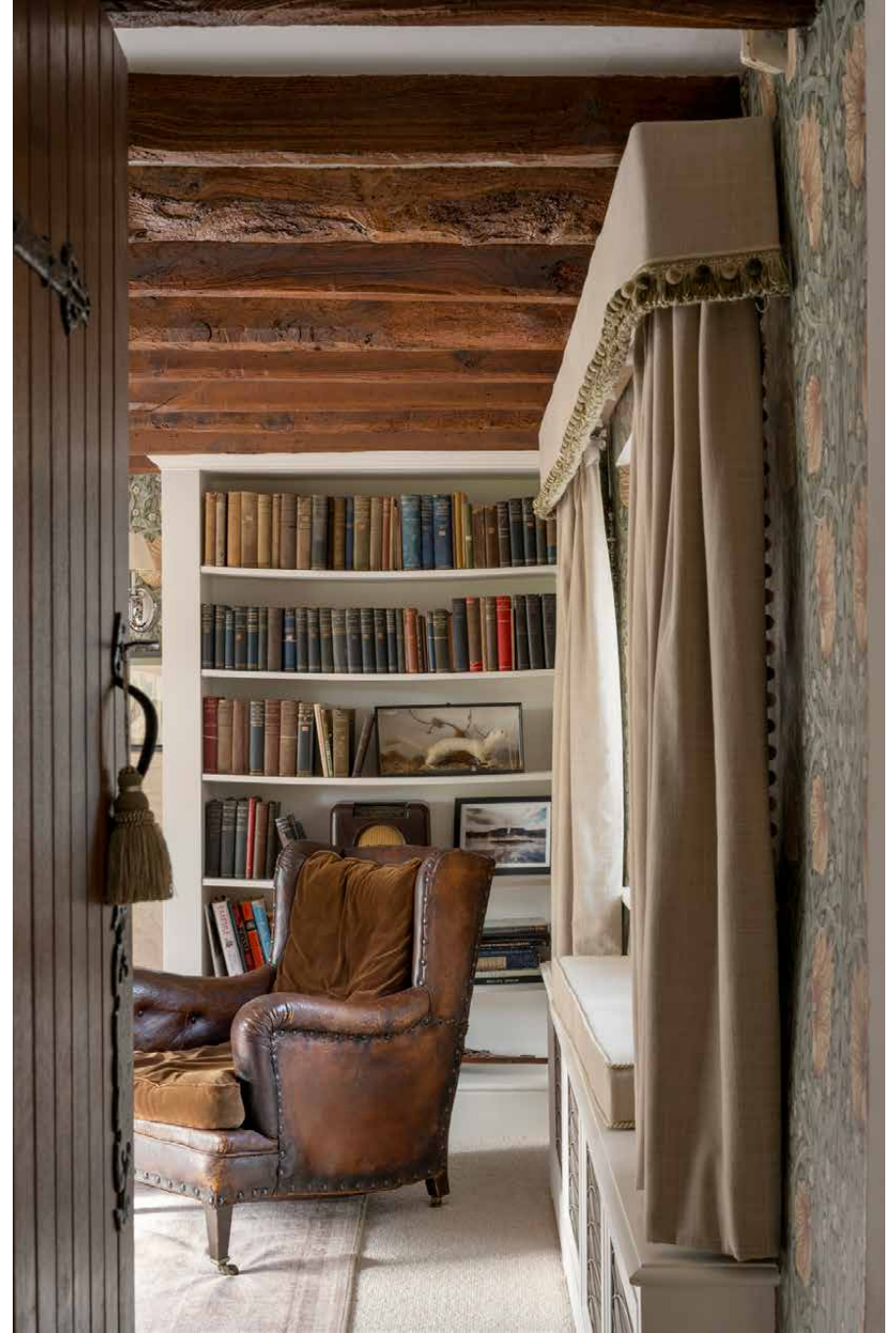
The living spaces

Two reception rooms pair heritage and harmony – one centred around a wood-burning stove, the other inviting easy conversation. Heavy wooden beams line the ceilings and rustic stone hearths radiate warmth. The dining room lends itself to long lunches or evening gatherings, while a study, with floor-to-ceiling bookcases and an impressive built-in desk offers quiet focus with garden views.













Kitchen and dining

To the far end of the home, the kitchen captures a contemporary country aesthetic. Beneath a vaulted ceiling punctuated by skylights, shaker-style cabinetry meets a cream Aga and zellige-tiled splashback. Beyond, the space opens to an open-plan reception room: a dining table and custom-built bar cabinet sit primed for hosting. Alongside, sofas create a comfortable snug, where steel-framed glazing opens to the terrace and gardens beyond.







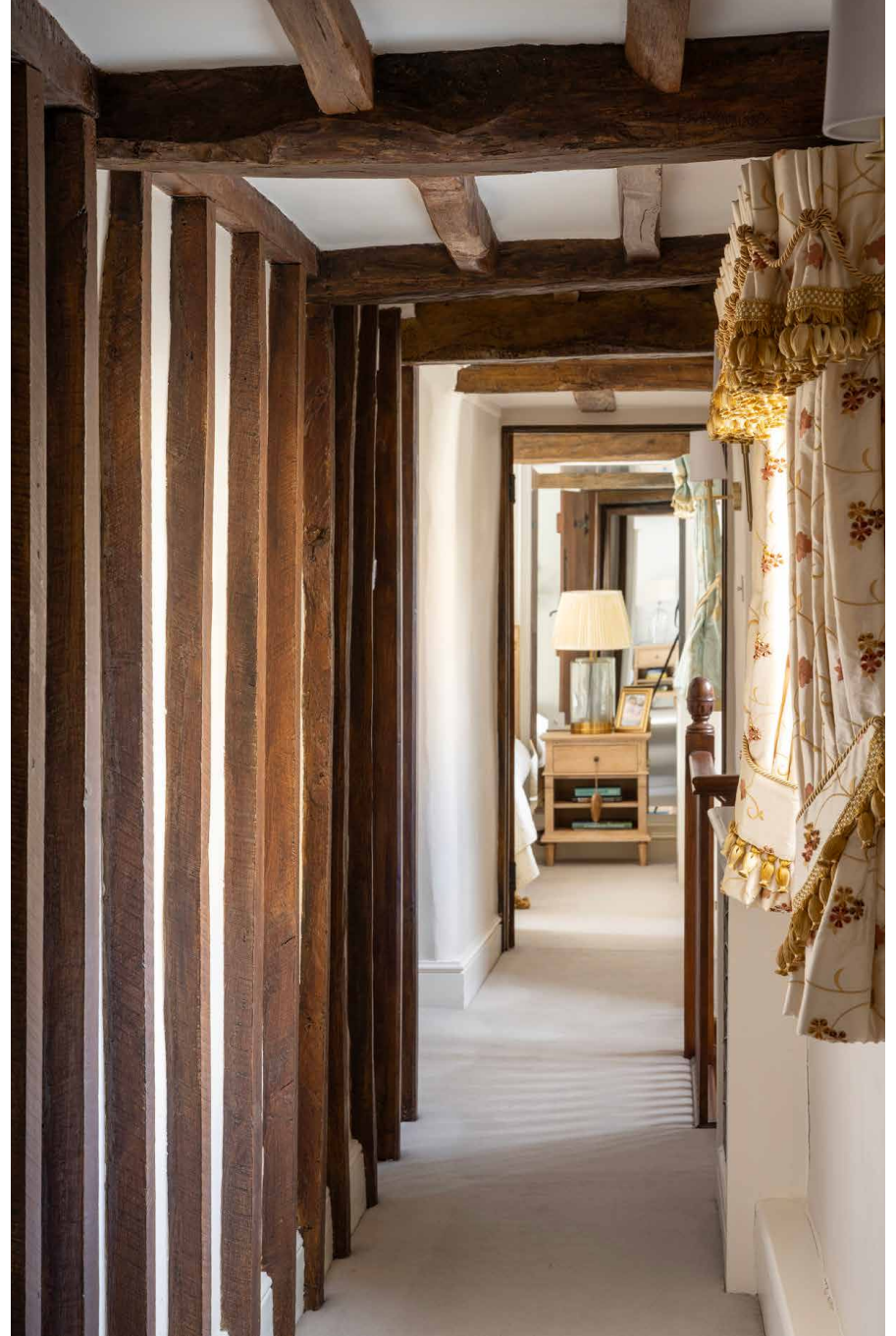


Bedrooms & bathrooms

Upstairs, the sleeping quarters unfurl with a sense of retreat while retaining the home's period character. The principal bedroom is serene with its dressing area and generous en suite bathroom, where a shower and rolltop bathtub await. A second en suite bedroom and three further rooms complete the layout, all light-filled and elegantly composed.

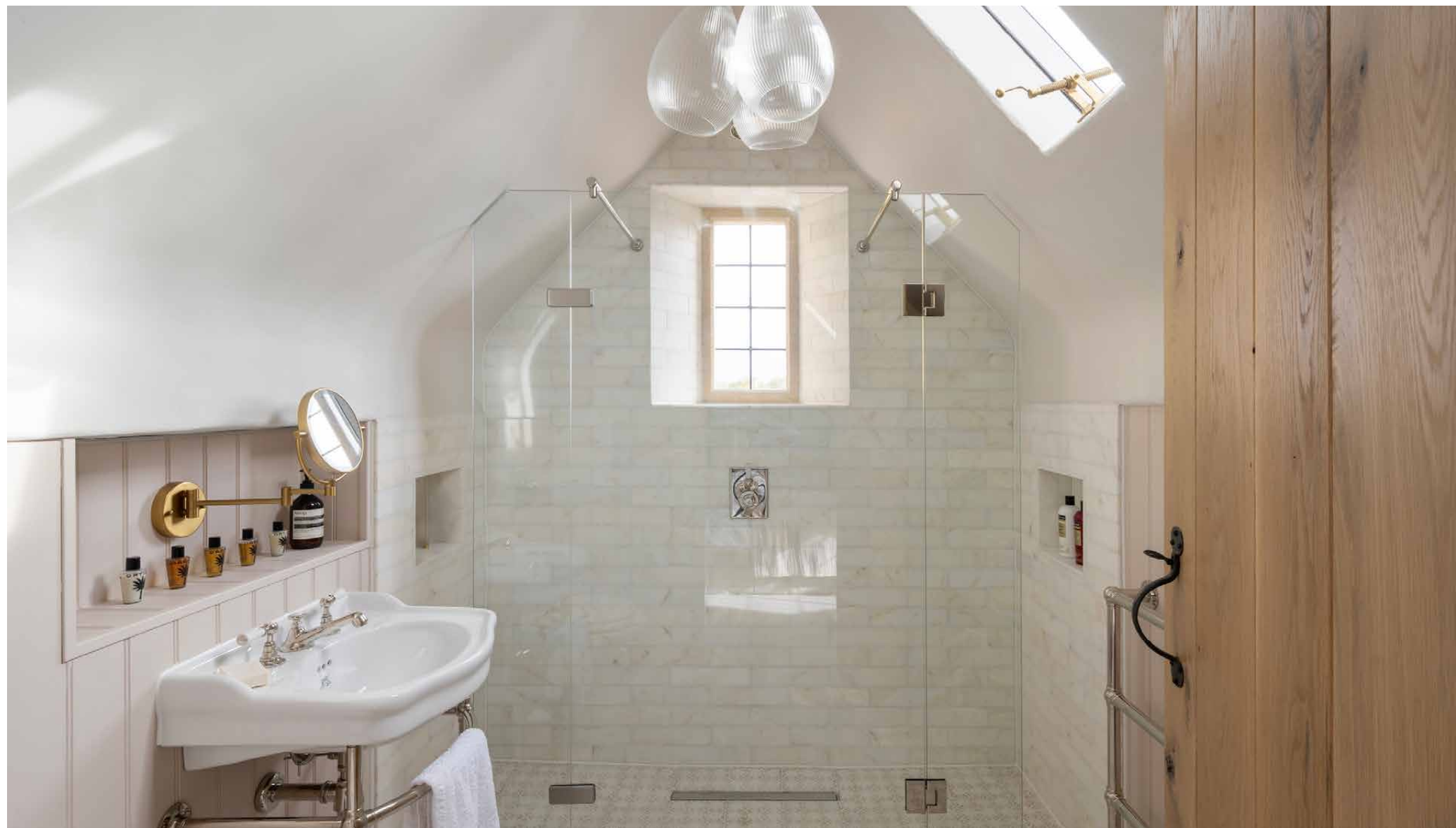


















Outdoor spaces

Outside, almost half an acre of south-facing grounds unfolds as a series of verdant lawns, a trellised walkway and wisteria-clad walls. The courtyard is a particular highlight – with flower beds herbaceous borders and a patio prepped for entertaining. Tall hedges line the boundary, ensuring utmost privacy.





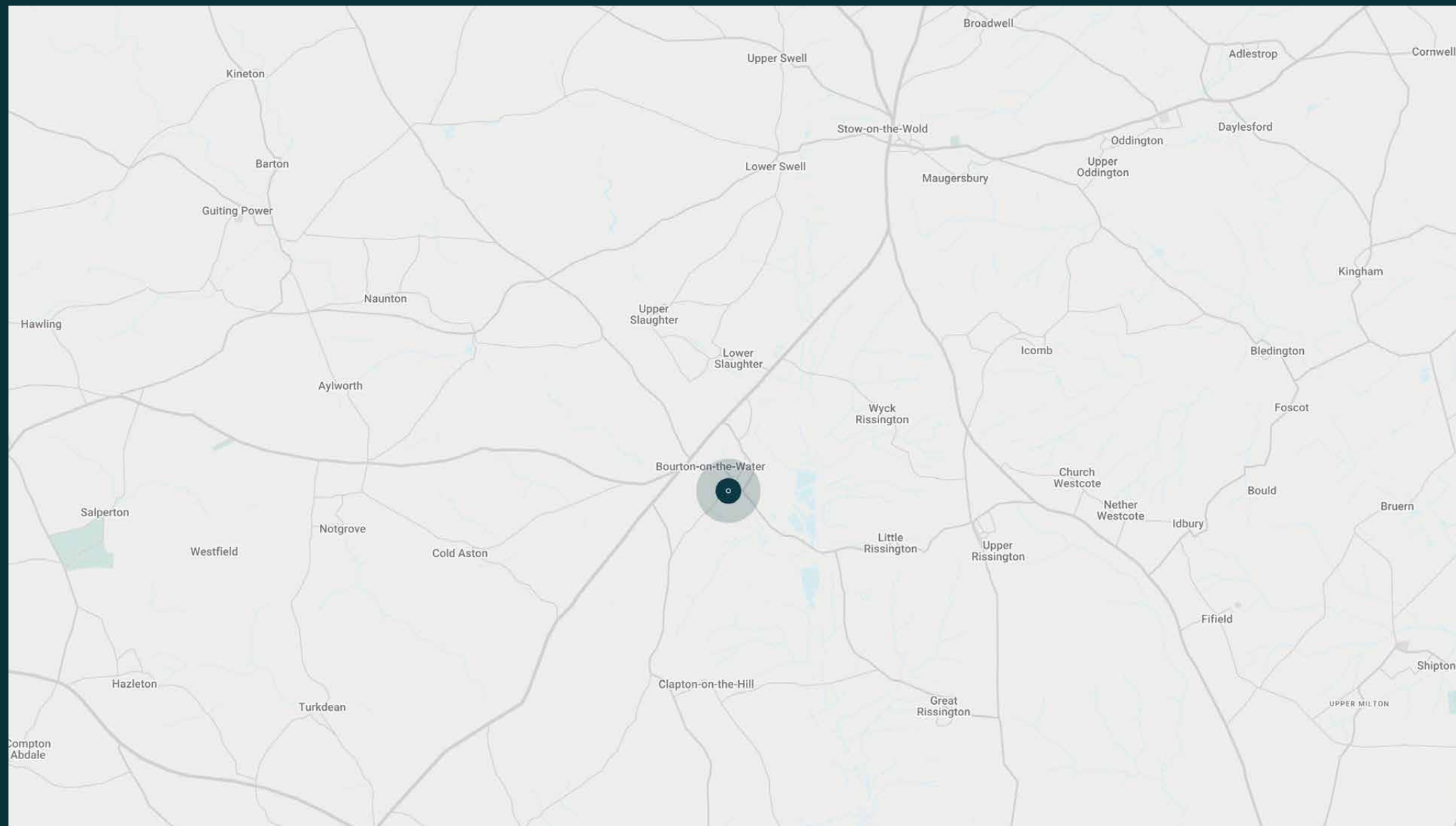
The surroundings

Set in the heart of the Cotswolds, Bourton-on-the-Water is one of Gloucestershire's most characterful villages. Its historic architecture, arched stone bridges and lively market square tell stories that span centuries. Today, its charm endures in the form of antiques shops, tearooms and traditional pubs, alongside attractions like the Model Village and Dragonfly Maze. Nearby, discover National Trust landmarks such as Bibury and Minster Lovell Hall, or explore the wider Cotswold countryside before returning to the quiet comfort of Bridge House.

Travel times (by car):

- Stow-on-the-Wold – 13 mins
- Daylesford – 21 mins
- Soho Farmhouse – 42 mins
- Oxford – 1 hour





Property features

- Interiors by JH Designs
- Contemporary kitchen with vaulted ceiling
- Breakfast and reception room
- Double drawing room
- Dining room
- Principal bedroom suite with dressing area
- Guest bedroom suite
- Three further bedrooms
- Family bathroom
- Cloakroom
- Utility room
- Large south-facing private garden
- Cinema room
- Home office



Guest & concierge services

Tennis coach or yoga instructor. Tables at renowned dining institutions, tickets to sporting or music events, and tours of the surrounding countryside: we're here to ensure stays are nothing short of exceptional. Working alongside our carefully selected partners, we put tastemakers and health and wellbeing experts at our guests' fingertips.

Our statement spaces are just the starting point – to ensure everyone feels at home, our rates include:

-
- Housekeeping
 - Flexible check-in/out
 - Luxury linens and toiletries
 - Legal compliance on all our homes
 - A personal welcome and arrival essentials
 - Unlimited access to guest services and tailored experiences
 - Professional inspection before and after every stay
 - Complete discretion



domus stay.

Please get in touch if you have any questions
or require any further information.

hello@domusstay.com

+44 (0)20 8168 8880

The property particulars are a guide not statements. Descriptions, photographs, and plans are for guidance only. The Property is offered "subject to contract and references". No warranties, representations, License or Tenancy is given by Domus Stay. Our full disclaimer together with trading names and our Privacy Policy is shown on our website

© Domus Stay 2025. All rights reserved.

