

domus  
stay.

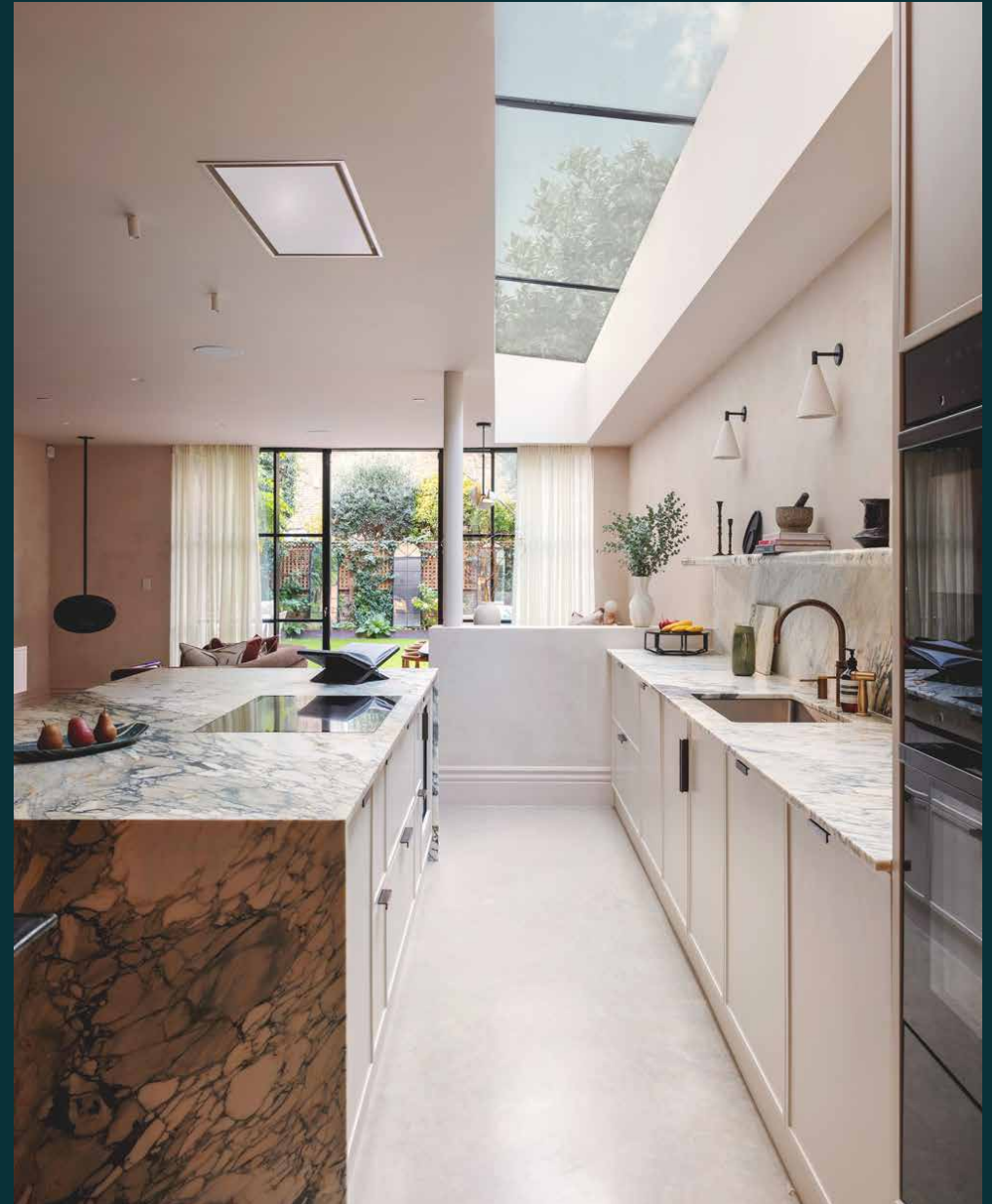
---

## Bradbourne Street

FULHAM

6 Bedrooms, 5 Bathrooms  
For 12 guests

---







This six-bedroom home to rent balances sculptural materials, generous proportions and spaces designed for flex.

A family sanctuary shaped by Mediterranean sensibilities, this Fulham home is all sun-warmed materials and rooms configured for dynamic living. Thoughtfully reworked by studio Project London, tactile finishes and carefully judged colour bring character without excess. Across four expansive floors, sociable living spaces sit alongside private retreats, with a home cinema, gym and rooftop terrace on hand to elevate the everyday.



# The living spaces

On a quiet residential street close to the Thames, a traditional frontage gives little away. Inside, the ground floor opens into an open-plan setting where polished concrete floors and softly limewashed walls establish a calm, tactile backdrop. The home's unusually long footprint has been used to full effect: kitchen, dining and living zones unfold in sequence rather than competing for attention.

At its centre, an 11-metre-long kitchen anchors the space. Designed with bespoke specialists Cor Domi, the focal point stands as a three-metre island wrapped in Breccia Capraia marble sourced from Tuscany. It's a room conceived for gathering – whether cooking, dining or settling into the integrated snug. A walk-in pantry, bar and banquette seating are woven seamlessly into the joinery, while double dishwashers, hidden appliances and generous storage keep the aesthetic uncluttered. Floor-to-ceiling glazing draws the garden into view, while a slim steel staircase introduces a sculptural edge and connects the space to the floor below.







To the front of the home, a soft teal reception space offers a warm wash of colour, styled with a plush coral sofa that invites easy days indoors. Recline with a paperback or a movie on the widescreen TV. Double doors connect from here to the home's private office, a quiet setting to catch up on work.







# Wellness at home

Descending via a custom steel staircase, the lower ground level shifts the mood towards restoration and leisure. Designed to flex with family life, it's energetic by day, cocooning by night. Crittall glazing reveals a mirrored home gym, naturally lit by overhead skylights. Beyond, a playroom and dedicated cinema room create space for downtime, with a state-of-the-art AV system and heavy curtains ensuring a fully immersive viewing experience.











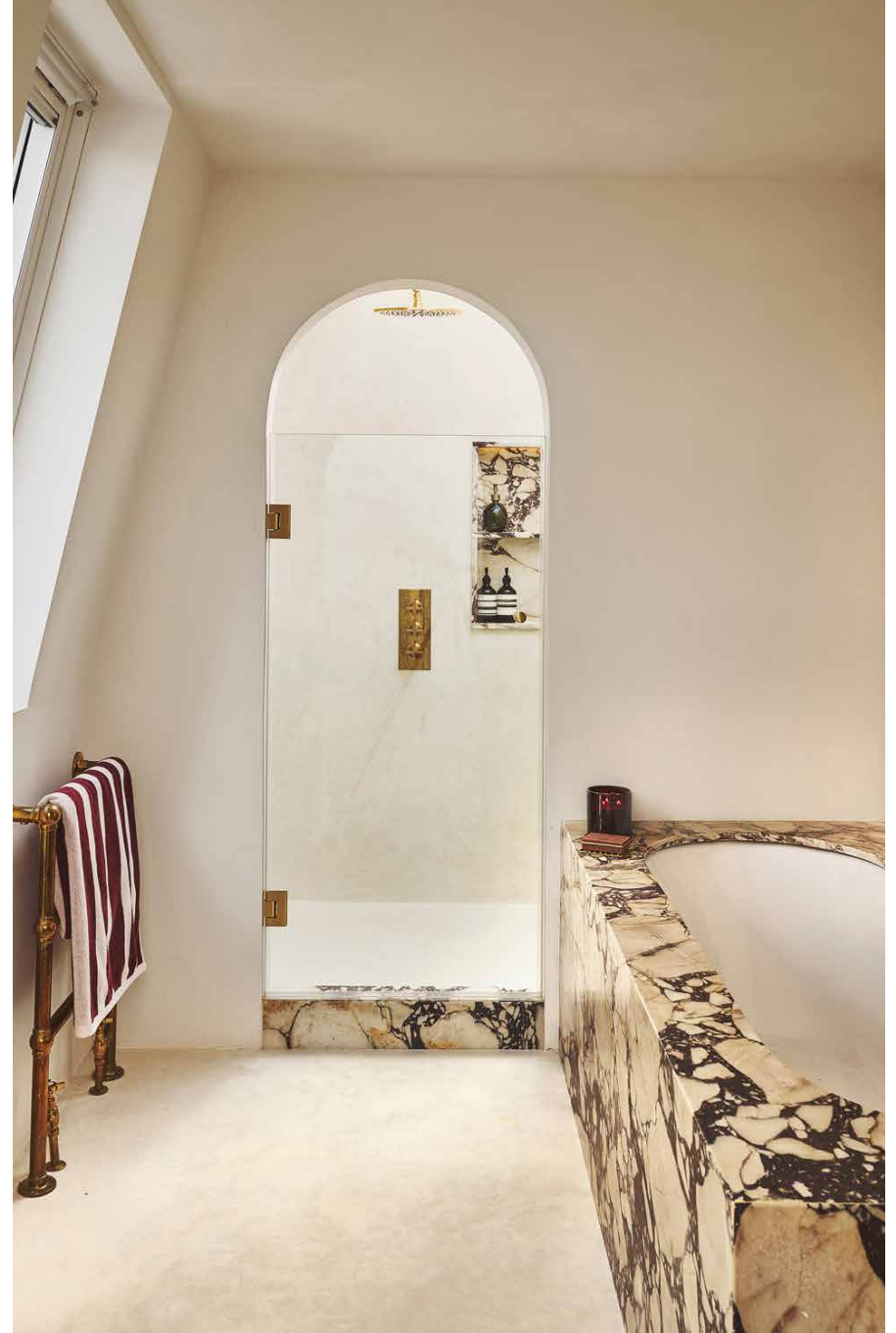
## Bedrooms & bathrooms

The principal bedroom suite occupies the top floor, conceived with calm as a penthouse-style retreat with access to a southwest-facing terrace. A sculptural headboard subtly divides the sleeping area from a dressing space, which leads through to the en suite bathroom. Here, Viola marble lines vanity tops, shelving niches and a generous bathtub. A double shower sits beneath a rooflight, framing the sky and flooding the room with natural light.

Four further bedrooms are arranged on the floor below. A characterful guest suite features a walk-in wardrobe and en suite, while the remaining bedrooms are thoughtfully designed and playfully curated, sharing access to a family bathroom.

A final bedroom suite is set on the lower ground floor, complete with an en suite shower room and private external access. Offering privacy and flexibility, it works equally well for guests, au pair accommodation or extended family.













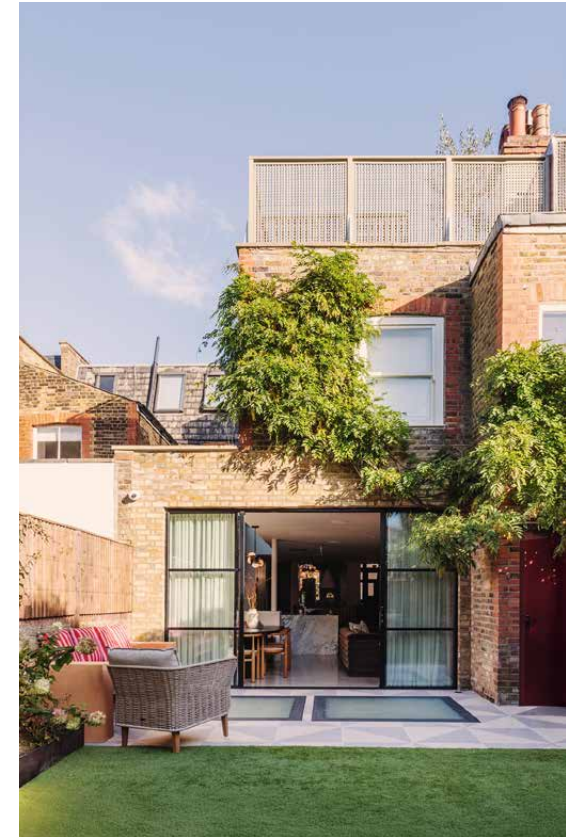






# Outdoor space

From the kitchen, Crittall glazing opens onto a private west-facing garden, with a paved terrace designed for alfresco dining and relaxed summer evenings. Above, a generous southwest-facing roof terrace crowns the home: a sunlit escape to take in the rooftops of Fulham.

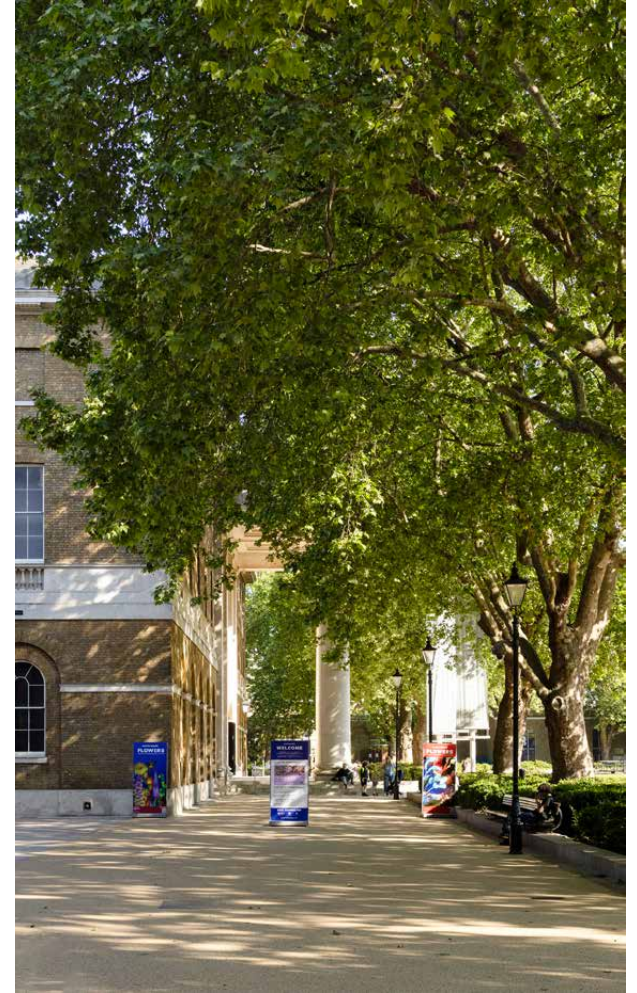




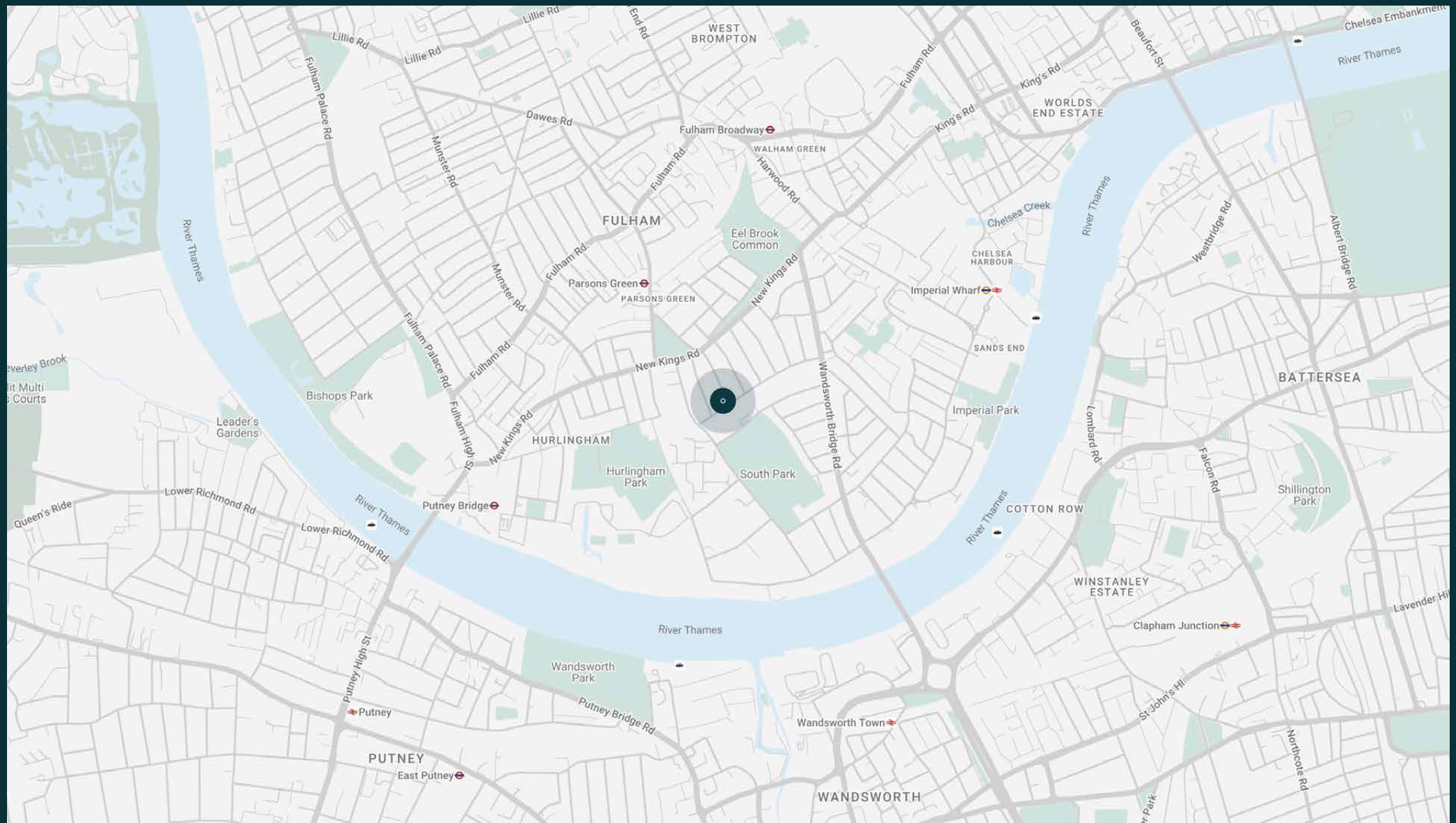
# The neighbourhood

Moments from the river and surrounded by green spaces, Bradbourne Street offers peace – and proximity to the city.

Take your pick of leafy green spaces to explore, from Imperial Park and South Park – complete with netball, tennis and basketball courts – to the nearby Hurlingham Club. For creative inspiration, check out the showrooms at The Design Centre at Chelsea Harbour and refuel with pastries from French deli Chanteroy. Wander up to New King's Road for brunch at Hally's or pick up supplies from Bayley & Sage. End the day with a drink at Duke on the Green.









# Property features

- Interior design by Project London
- Open-plan kitchen and dining room
- Reception room
- Principal bedroom suite with dressing area
- Two guest bedroom suites
- Three further bedrooms
- Family bathroom
- Home office
- Playroom
- Cinema
- Gym
- Decked roof terrace
- Private garden
- Air conditioning

---

Approx. 1,257 sq ft / 116 sq m





# Guest & concierge services

Our concierge team are here to help guests settle in, seamlessly. Centre court tickets to Wimbledon, Premier League seats with the best views, Savile Row tailors on standby, or a private chef to cater to individual tastes – we aim to elevate every stay.

From the moment of booking with us, each guest has a single point of contact to finesse the details. Our statement spaces are just the starting point – to ensure everyone feels at home, our rates include:

- 
- Weekly housekeeping
  - Flexible check-in/out
  - Luxury linens and Bamford toiletries
  - Legal compliance on all our homes
  - A personal welcome and arrival essentials
  - Unlimited access to guest services and tailored experiences
  - Professional inventory inspection before and after every stay
  - Access to a curated portfolio of sole agency properties







Please get in touch if you have any questions  
or require any further information.

---

[hello@domusstay.com](mailto:hello@domusstay.com)

+44 (0)20 8168 8880

The property particulars are a guide not statements. Descriptions, photographs, and plans are for guidance only. The Property is offered "subject to contract and references". No warranties, representations, License or Tenancy is given by Domus Stay. Our full disclaimer together with trading names and our Privacy Policy is shown on our website

© Domus Stay 2025. All rights reserved.

