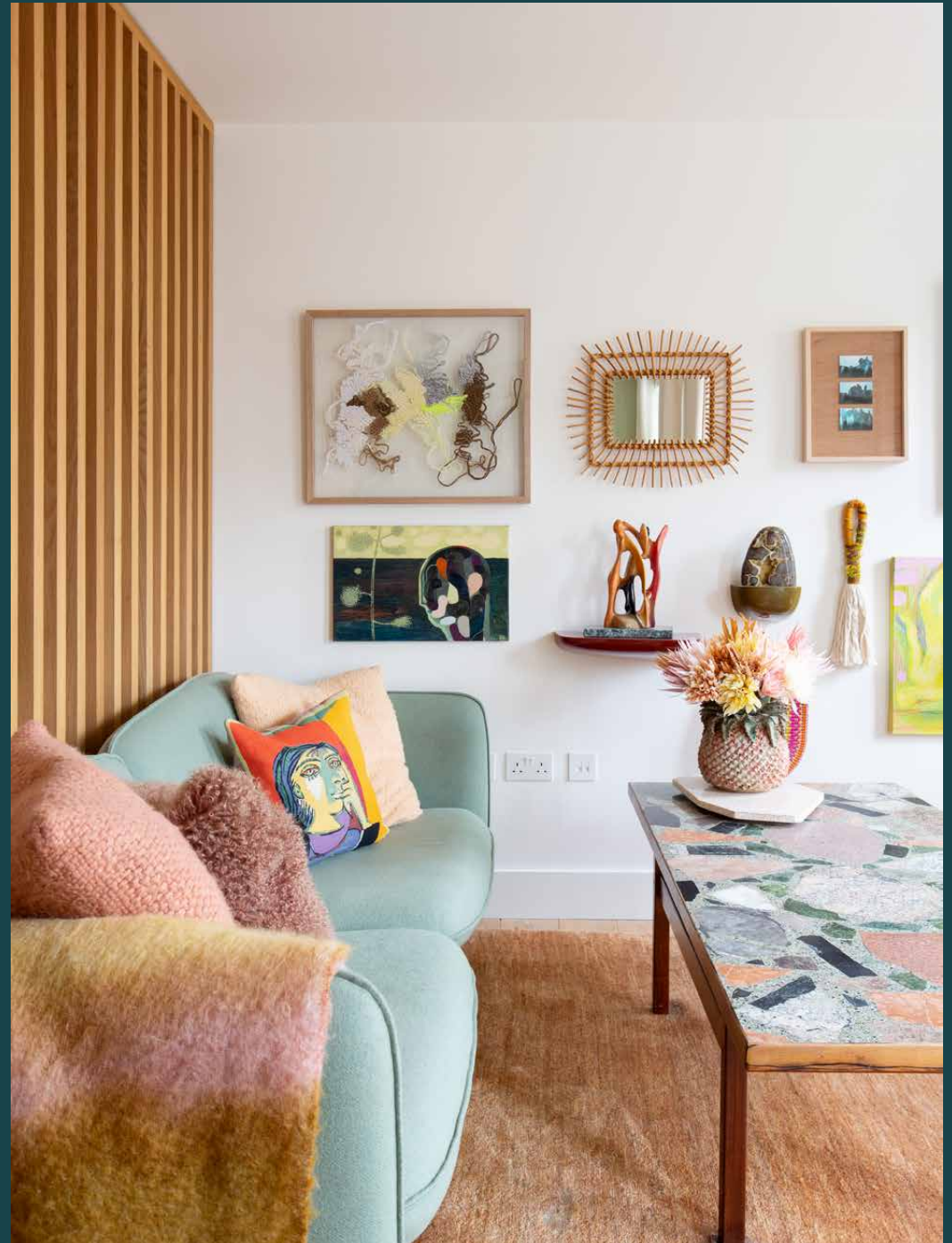

Bonchurch Road

Notting Hill W11

1 Bedroom, 1 Bathroom
For 2 guests





One bedroom. An open-plan living area. Plenty of character.

On the third floor of a new-build apartment block, this one-bedroom home is all soft light and playful interiors. The touch of its creative owner manifests through carefully curated artwork and sculptural furnishings; think Frank Lloyd Wright, Hans Kogl and Andy Warhol. Note the attention to detail in this apartment.

The way Nordic design is grounded by vintage accessories.

How polished surfaces contrast bold tones.

As you enter, a hallway leads to an open-plan living area, where materials and textures subtly carve zones; preparing small plates on sleek Carrara marble counters, sharing them at the dining table backdropped by one-of-a-kind tapestries and digestifs by the sofas tucked behind a wood-panelled divider.

Come golden hour, watch as the glow of the sunset floods in through full-length doors. Pull them open in the warmer months to let the breeze brush across designer décor. Or sip a glass of

Merlot on the west-facing balcony.



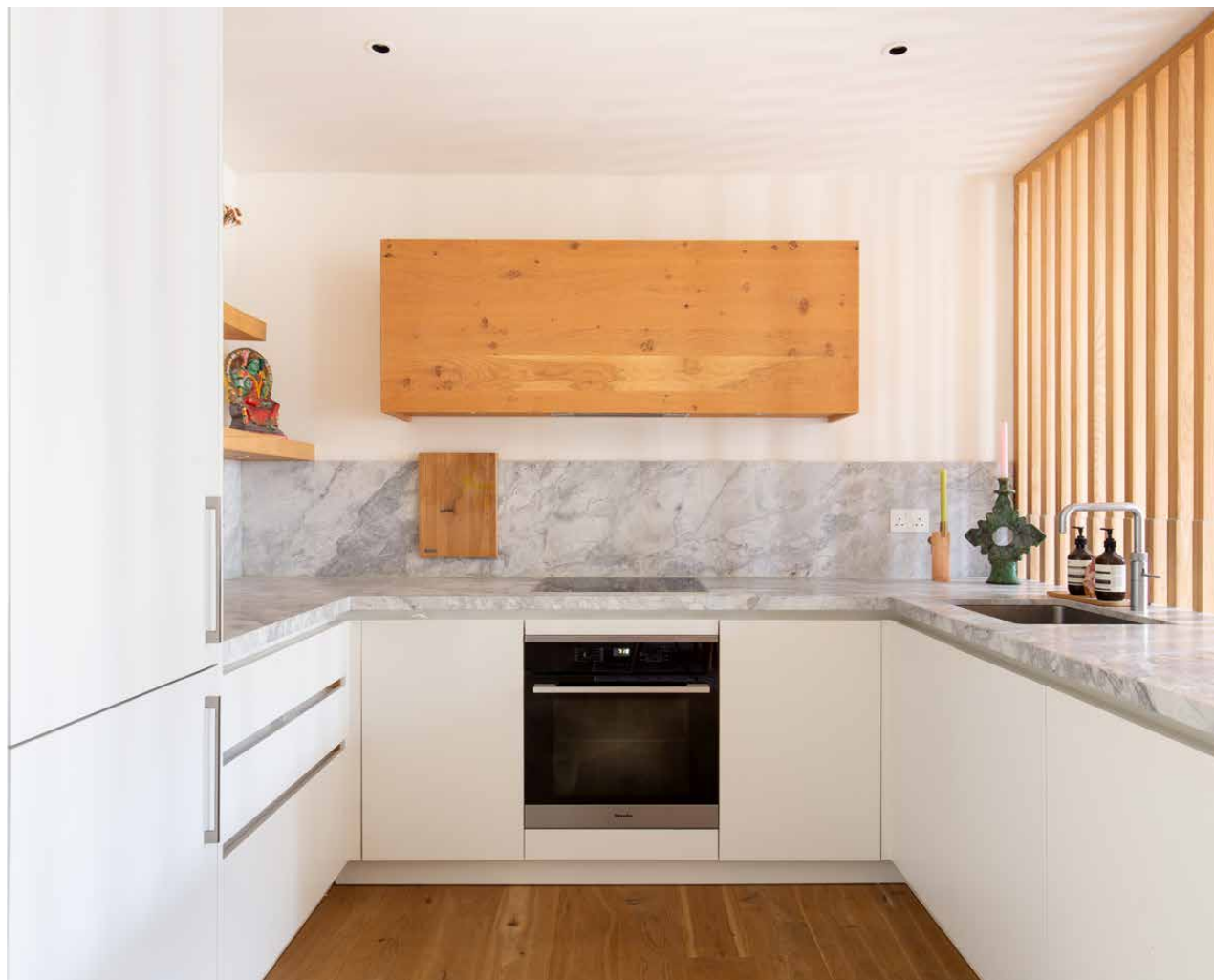


Modern-meets-vintage interiors. Best-in-design furnishings. And carefully curated artwork.

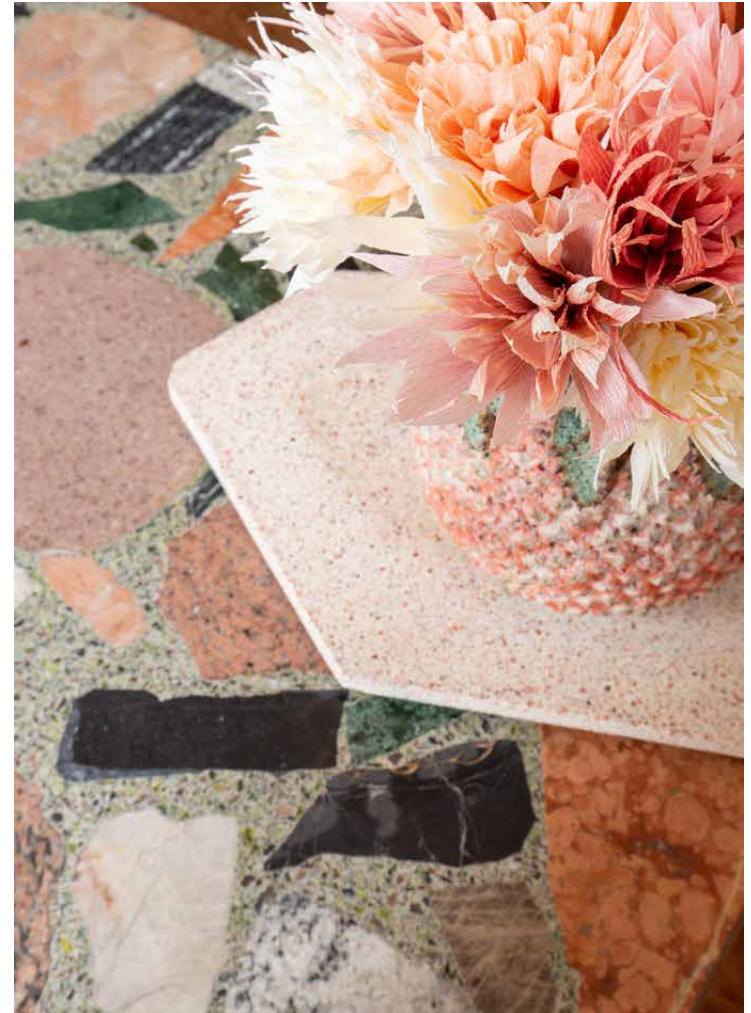


“

A work-of-art west London home that is as uplifting as it is grounding.







The bedroom shows that you needn't sacrifice character for a sense of tranquillity. Yes, the palette is pared-back but vibrant wall art amps up the mood. The bathroom is thoroughly modern, echoing the Carrara marble counters in the kitchen. It's fitted with a dual vanity and a shower bath.







“

A west-facing balcony is the perfect spot for evening tipples as the sun sets.





LOCATION

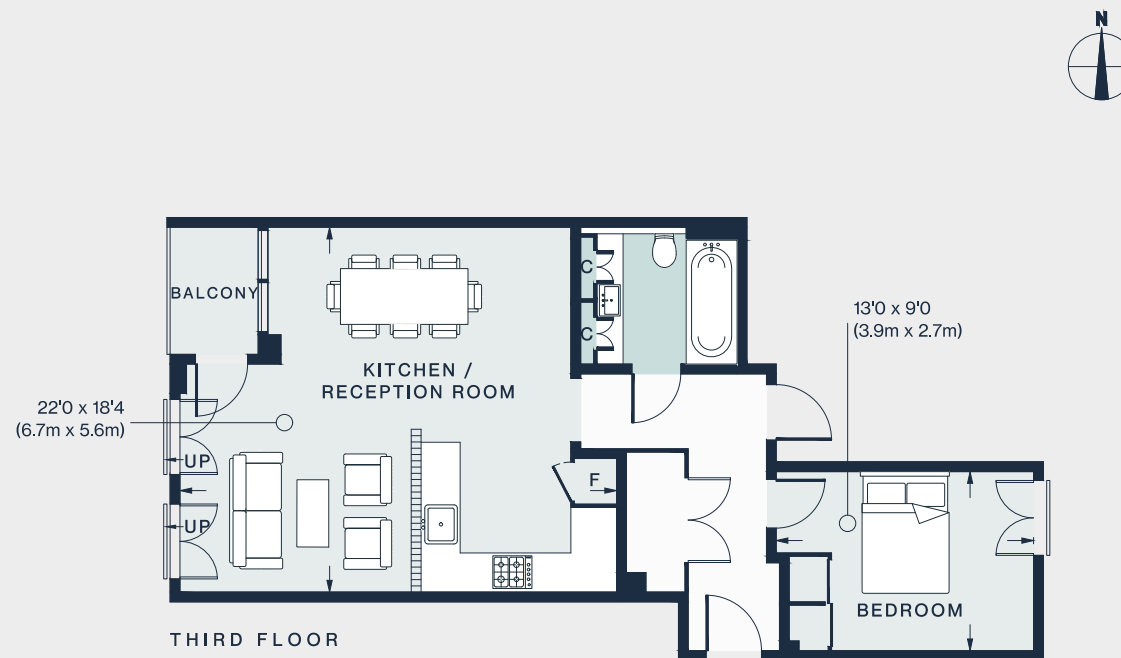
Both a stepping-stone to and a breather from Portobello Road, Bonchurch Road is around the corner from its vintage stalls and dynamic energy.

Stop by Layla's Bakery on your doorstep for a coffee and buttery pastry in the morning. Stretch your legs and stroll along the Grand Union Canal or down to Westbourne Grove and browse its independent boutiques. Stop by Granger & Co or Ottolenghi for lunch. Feeling thirsty? Try the legendary pub The Cow and be back home in 15.



PROPERTY HIGHLIGHTS

- Open-plan kitchen and reception room with Juliet balconies
- One bedroom
- Contemporary bathroom
- West-facing balcony
- Royal Borough of Kensington and Chelsea



Approx. Gross Internal Area = 639 sq ft / 59.4 sq m

Floor plans are for illustrative purposes only and not to scale. Compliant with RICS code of measuring practice.
Prepared for Domus Stay. Copyright © All Rights Reserved.



Please don't hesitate to get in touch
if you have any questions or require
any further information.

hello@domusstay.com

+44 (0)20 8168 8880

Domus Stay provides the perfect combination of property, place and personal service for the world's most remarkable people. If you have any questions, or if we can help in any way, please contact us on the above number. Be it about a property you have, a property you want, dates to check or any special requirements you may need, we'd love a chat.

