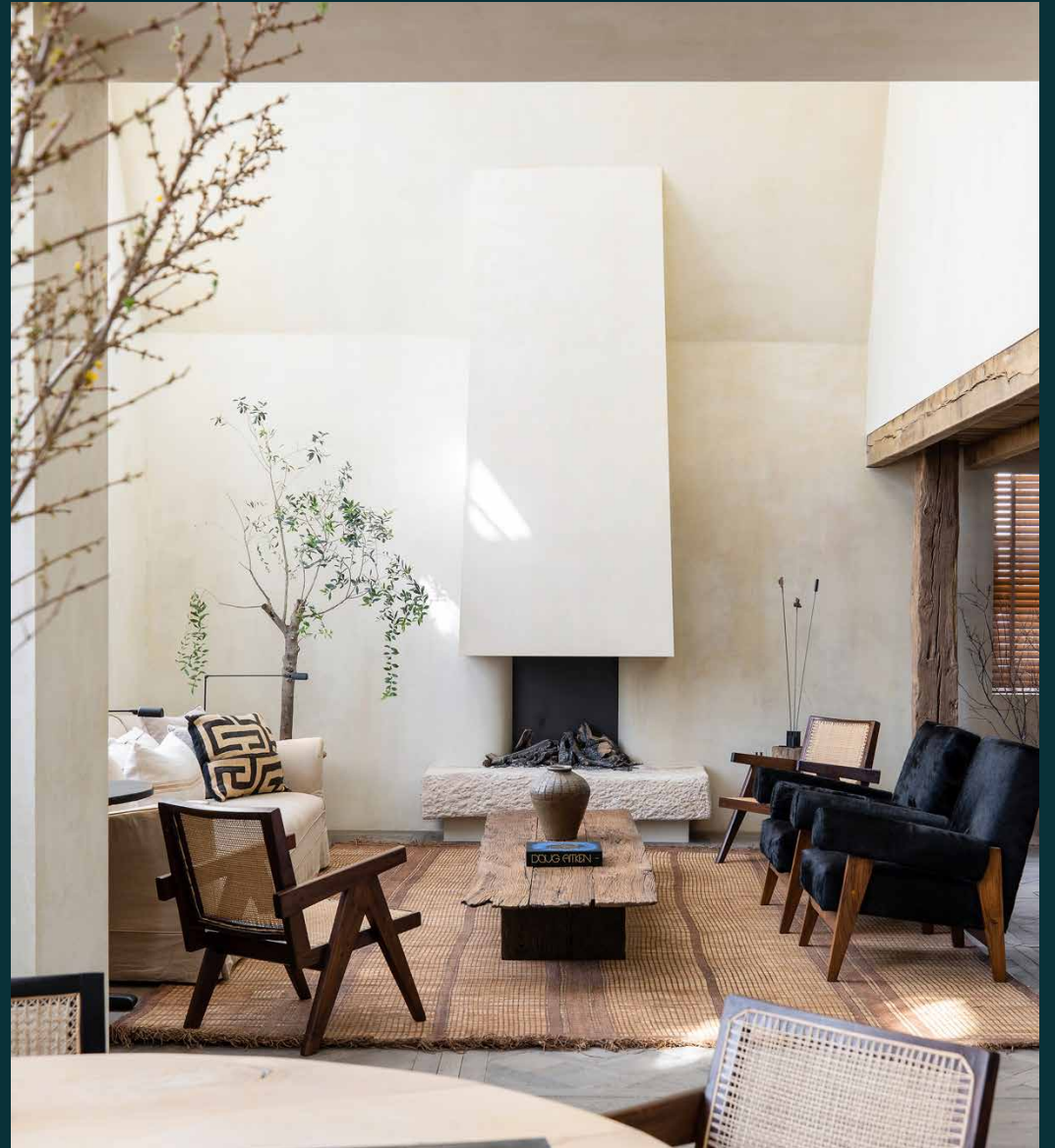


domus
stay.

Blenheim Crescent II

NOTTING HILL W11

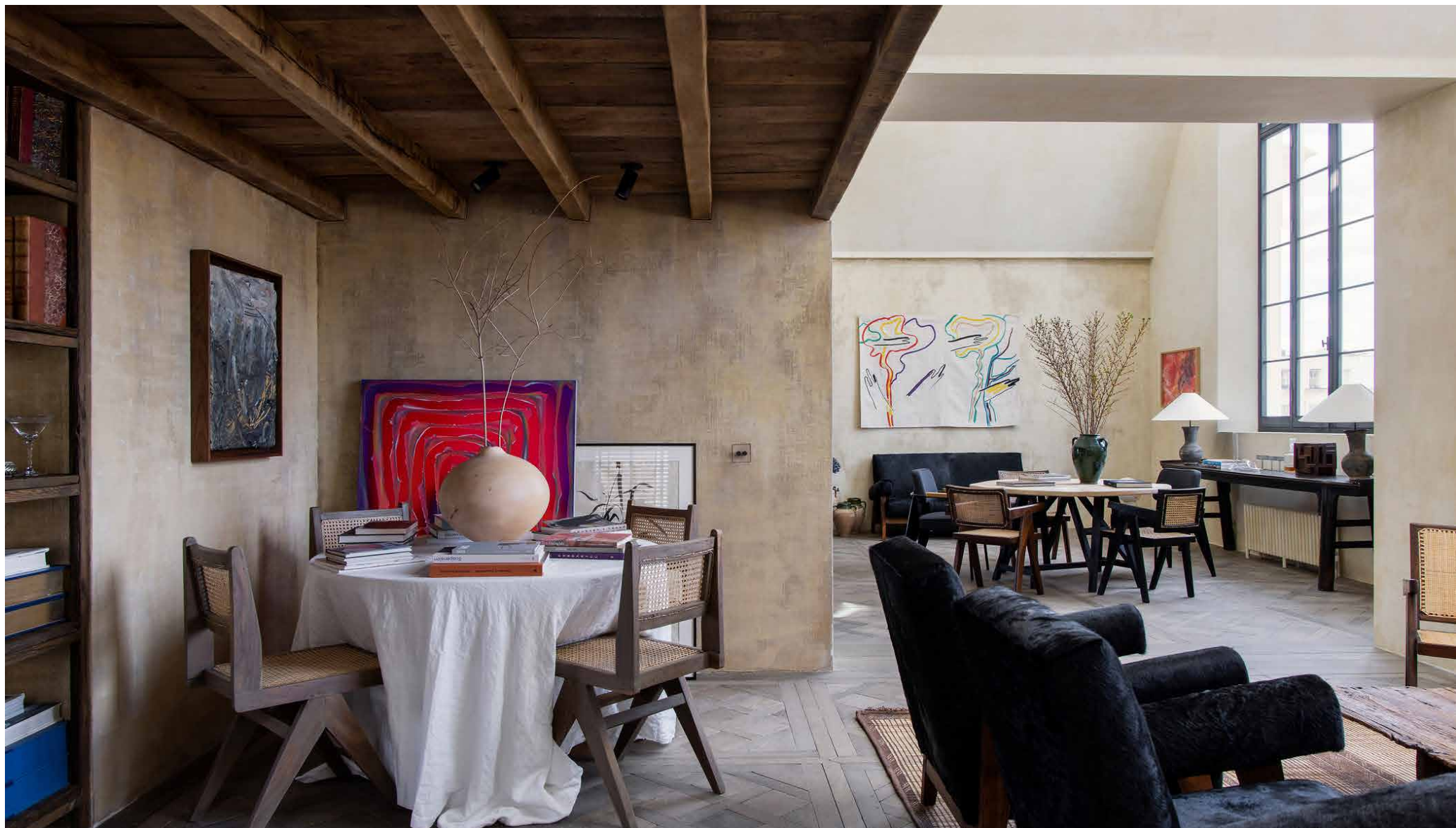
2 Bedrooms, 2 Bathrooms
For 4 guests





A statement-making two-bedroom penthouse in Notting Hill. Uplifting proportions and artful design.

Sitting among a row of colourful period townhouses, Blenheim Crescent's historic exterior offers few hints as to what awaits inside. Once an artist's studio, the apartment has been given an expectation defying transformation by interior designer Saskia Blyth.





The living spaces

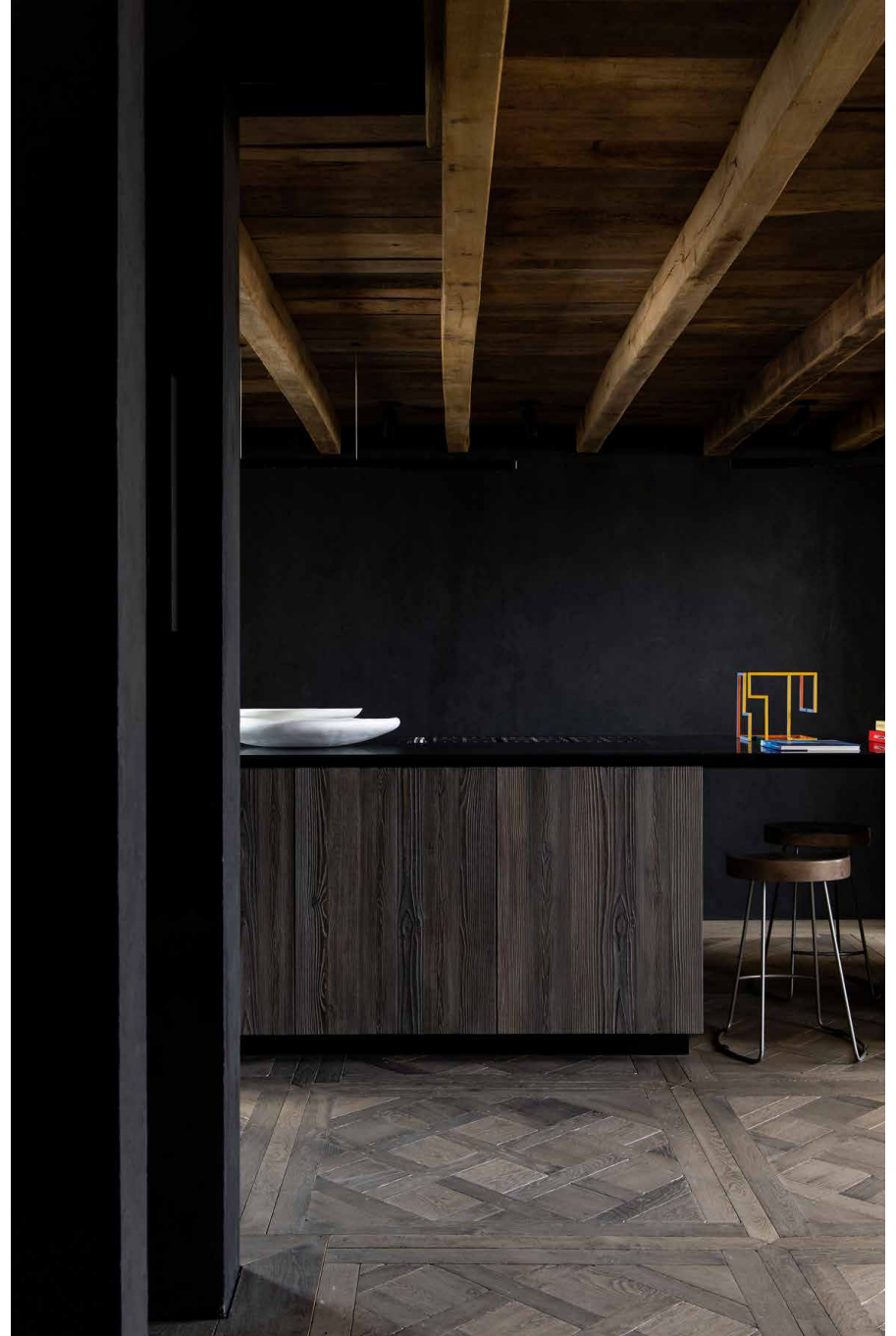
Vaulted ceilings and low-slung beams. Yellow-toned lime plaster and inky black walls: Blenheim Crescent is a lesson in contrasts. The second-floor reception room wraps around like a horseshoe, carving the palatial footprint into a series of seamlessly interlinked spaces.

A pair of double height windows that reach up into the eaves bathe the floor in natural light. In the kitchen, a monolithic Boffi island feels more like a work of sculpture than a piece of furniture. Its smooth marble surface is matched with dark grained wood that adds a moodier accent to the more rustic finishes found elsewhere.

Dark transitions to light in the dining area, where subtly mottled walls reflect the sunshine. Flowing through into the living room, an open fire provides a striking centrepiece, crowned by a chimney that stretches all the way to the ceiling. The lofty, cathedral-like proportions are tempered by a cosier snug with exposed beams that ground the space.









“Soaring vaulted ceilings and double height windows that draw the eye upwards are counterbalanced with more intimate corners.”





The Design

Interior visionary Saskia Blyth has brought an eclectic stamp to the gallery-like space, juxtaposing heirlooms with carefully sourced pieces. Materials and furniture have been thoughtfully curated throughout, from the Parquet de Versailles wooden flooring sourced in Belgium to the sumptuous upholstery by R.Kightley & Son. Attention has been paid to the very last detail – down to the matt black Dornbracht taps in the bathrooms.





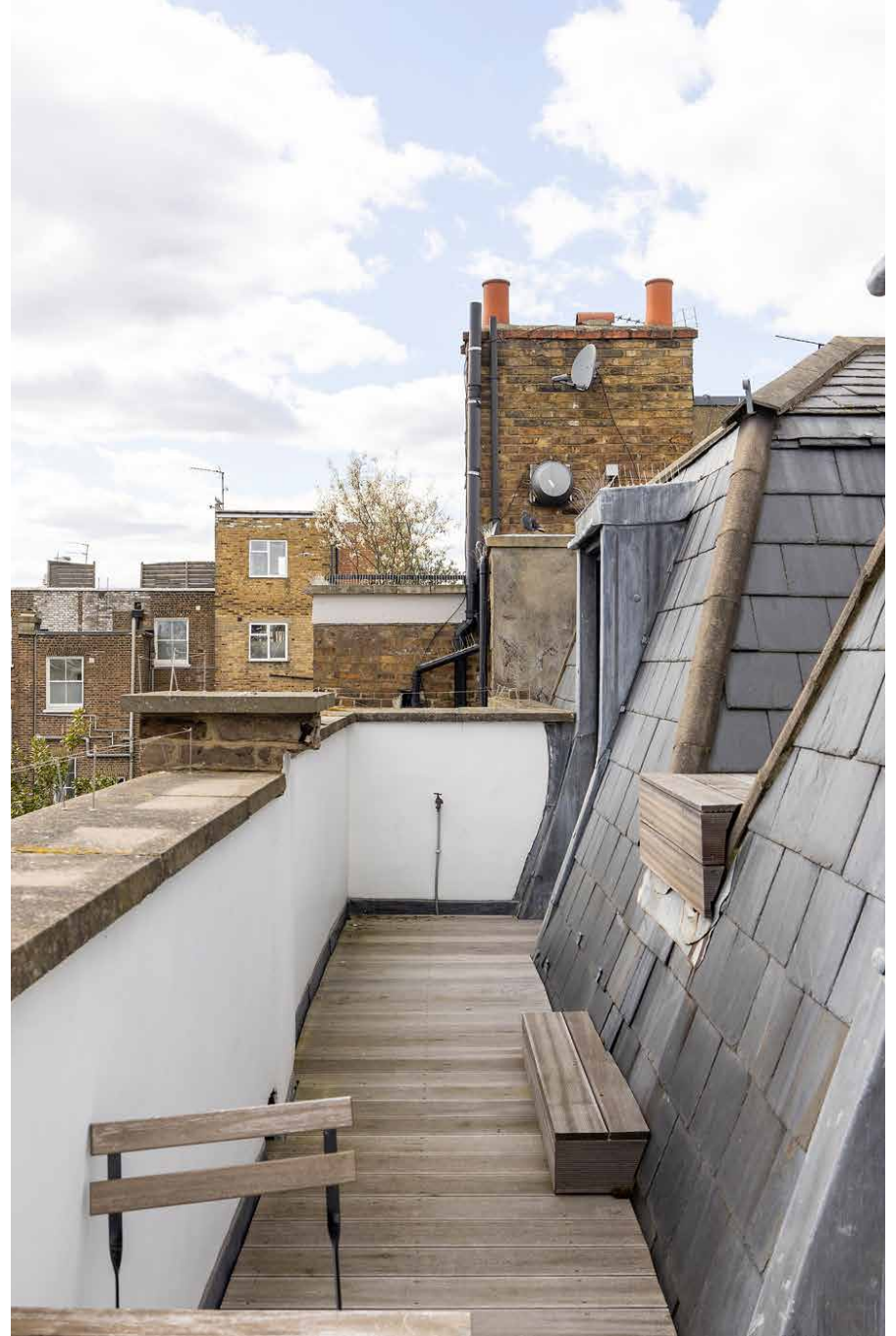
Bedrooms & bathrooms

Both bedrooms come with en suites, ensuring ultimate privacy and relaxation. In the guest room, blush plaster walls, a hessian carpet and access to a balcony set a soothing tone, while integrated storage ensures the space remains clutter free.

The same pared-back palette is adopted in the principal suite. The stone-toned, skylit bathroom with its walk-in shower and trough sink has a spa-like quality. The sleeping quarters are similarly tranquil – note the four-poster bed draped with soft cream linens – while the vaulted ceiling adds to the impressive sense of volume and scale.





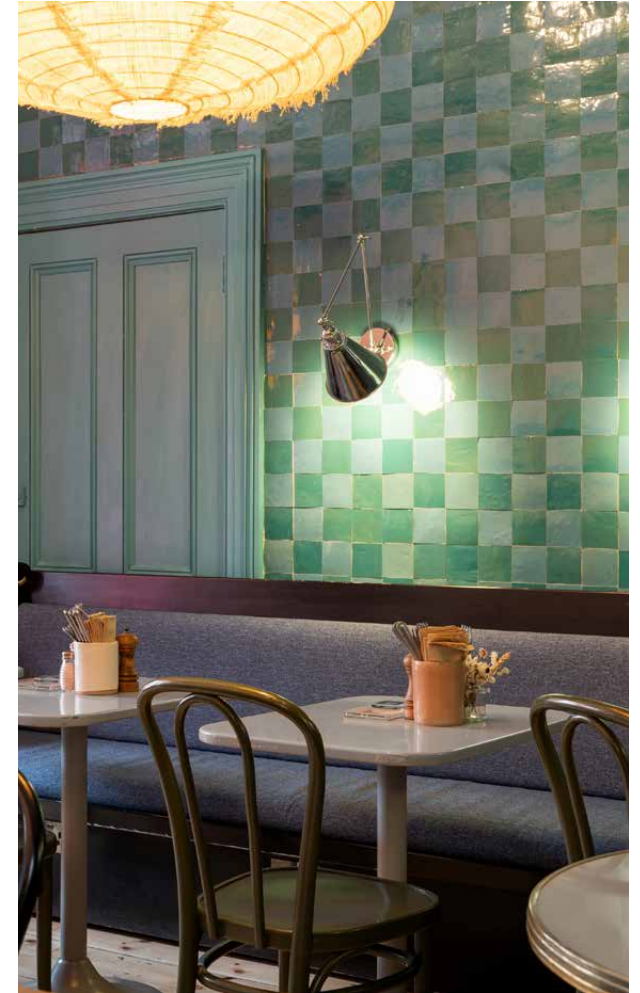


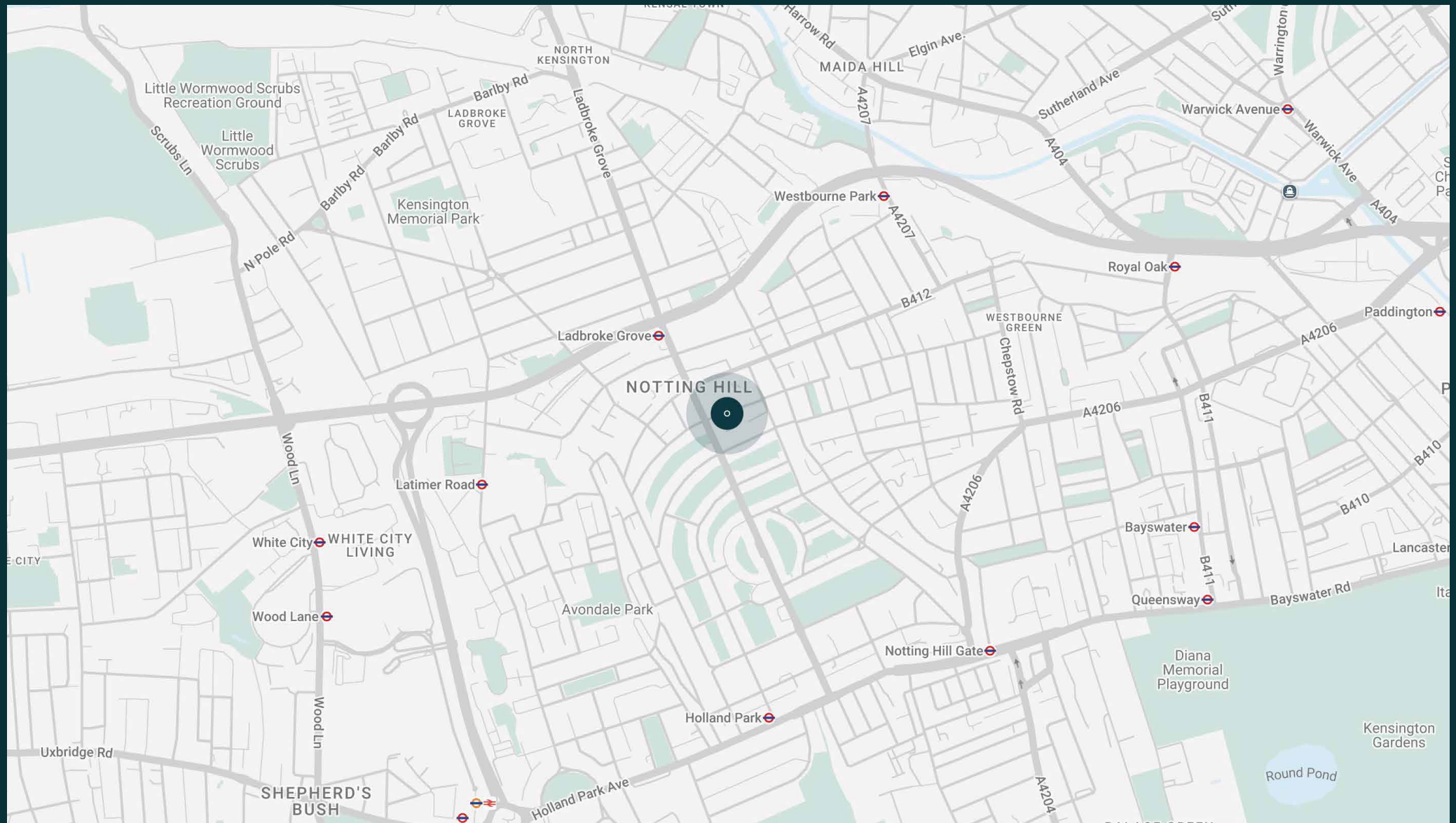


The neighbourhood

Set in the very heart of Notting Hill, Blenheim Crescent is one of Notting Hill's most desirable streets.

With Portobello Road and Kensington Park Road on your doorstep, it's easy to spend hours getting to know the neighbourhood's famous thoroughfares. Spend mornings sifting through antiques at Portobello Market or running fingers down the spines of curated literature in the Notting Hill Bookshop. Pick up a tangy sourdough from Fabrique before a session at SoulCycle. Spend evenings catching a film at the Electric Cinema or dining at Gold and be back home in five minutes. Ladbroke Grove station is just a short walk away, providing quick access to the city.

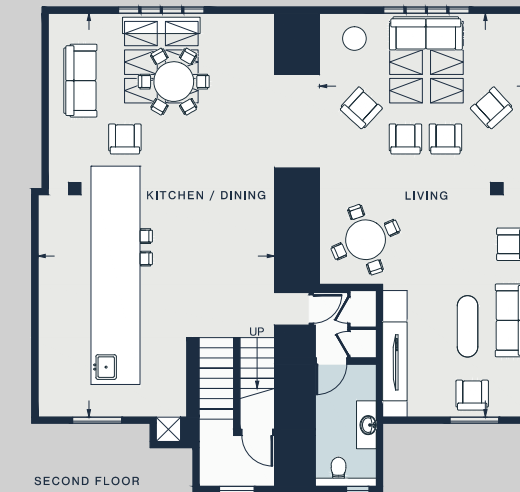
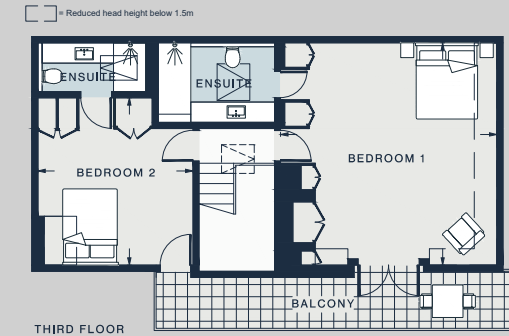




Property features

- Open-plan kitchen and reception room
- Separate dining area
- Additional living area
- Principal bedroom suite
- Guest bedroom suite
- Two bathrooms
- Roof terrace
- Royal Borough of Kensington & Chelsea

Approx. 190 sq m / 2,042 sq ft



KITCHEN / DINING ROOM

32'6 x 19'0 (9.9m x 5.8m)

LIVING ROOM

32'6 x 17'3 (9.9m x 5.2m)

BEDROOM1

17'11 x 17'5 (5.4m x 5.3m)

BEDROOM2

13'5 x 12'6 (4.1m x 3.8m)

Approx. Gross Internal Area = 2042 sq ft / 189.7 sq m

Floor plans are for illustrative purposes only and not to scale. Compliant with RICS code of measuring practice. Furniture layouts are indicative only. This property may be furnished, part-furnished or unfurnished. Please refer to your agent for details.

Guest & concierge services

Our concierge team are here to help guests settle in, seamlessly. Centre court tickets to Wimbledon, Premier League seats with the best views, Savile Row tailors on standby, or a private chef to cater to individual tastes – we aim to elevate every stay.

From the moment of booking with us, each guest has a single point of contact to finesse the details. Our statement spaces are just the starting point – to ensure everyone feels at home, our rates include:

-
- Weekly housekeeping
 - Flexible check-in/out
 - Luxury linens and Bamford toiletries
 - Legal compliance on all our homes
 - A personal welcome and arrival essentials
 - Unlimited access to guest services and tailored experiences
 - Professional inventory inspection before and after every stay
 - Access to a curated portfolio of sole agency properties



domus stay.

Please get in touch if you have any questions
or require any further information.

hello@domusstay.com

+44 (0)20 8168 8880

The property particulars are a guide not statements. Descriptions, photographs, and plans are for guidance only. The Property is offered "subject to contract and references". No warranties, representations, License or Tenancy is given by Domus Stay. Our full disclaimer together with trading names and our Privacy Policy is shown on our website

© Domus Stay 2025. All rights reserved.

