

domus  
stay.

---

## Blakemore Farm

THE COTSWOLDS & COUNTRY

7 Bedrooms, 6 Bathrooms  
For 14 guests

---





A contemporary reimagining of a Cotswold farmhouse. This seven-bedroom country home for rent is surrounded by ancient woodland and patchwork fields.

Circled by green-cloaked hills, Blakemore Farm comes about as close to old-world charm as you can get. Found just outside the artistic town of Chipping Campden, stays here give you a foothold in England's quintessential storybook countryside.

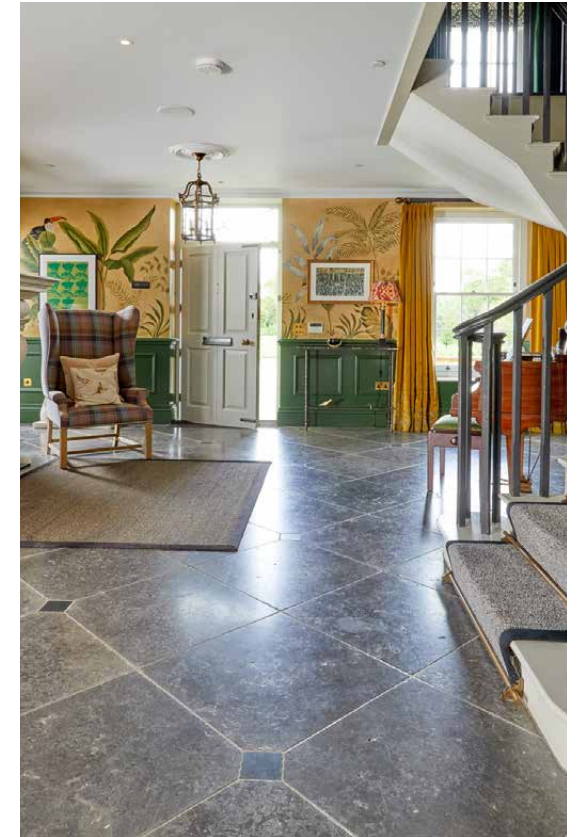
The ultimate rural pile, solitude meets striking design by Yiangou Architects – and views that never get old. Lap them up from the swimming pool and tennis court. Planning on arriving in style? Land a helicopter in the paddock.



# The living spaces

A flagstone entrance hall and sweeping cantilevered staircase set a grand scene while thoughtful details soften the scale: hand-painted murals wash the walls, armchairs flank a fireplace, and a piano stands ready to soundtrack everyday life.

This sense of warmth and welcome extends to the living spaces. A formal reception room is all inviting textures and innumerable sofas. The accompanying dining room leans dramatic – its black ceiling creates a theatrical setting for gatherings around a commanding circular table for 14. Elsewhere a cosy snug and separate playroom carve out dedicated spaces for all the family.







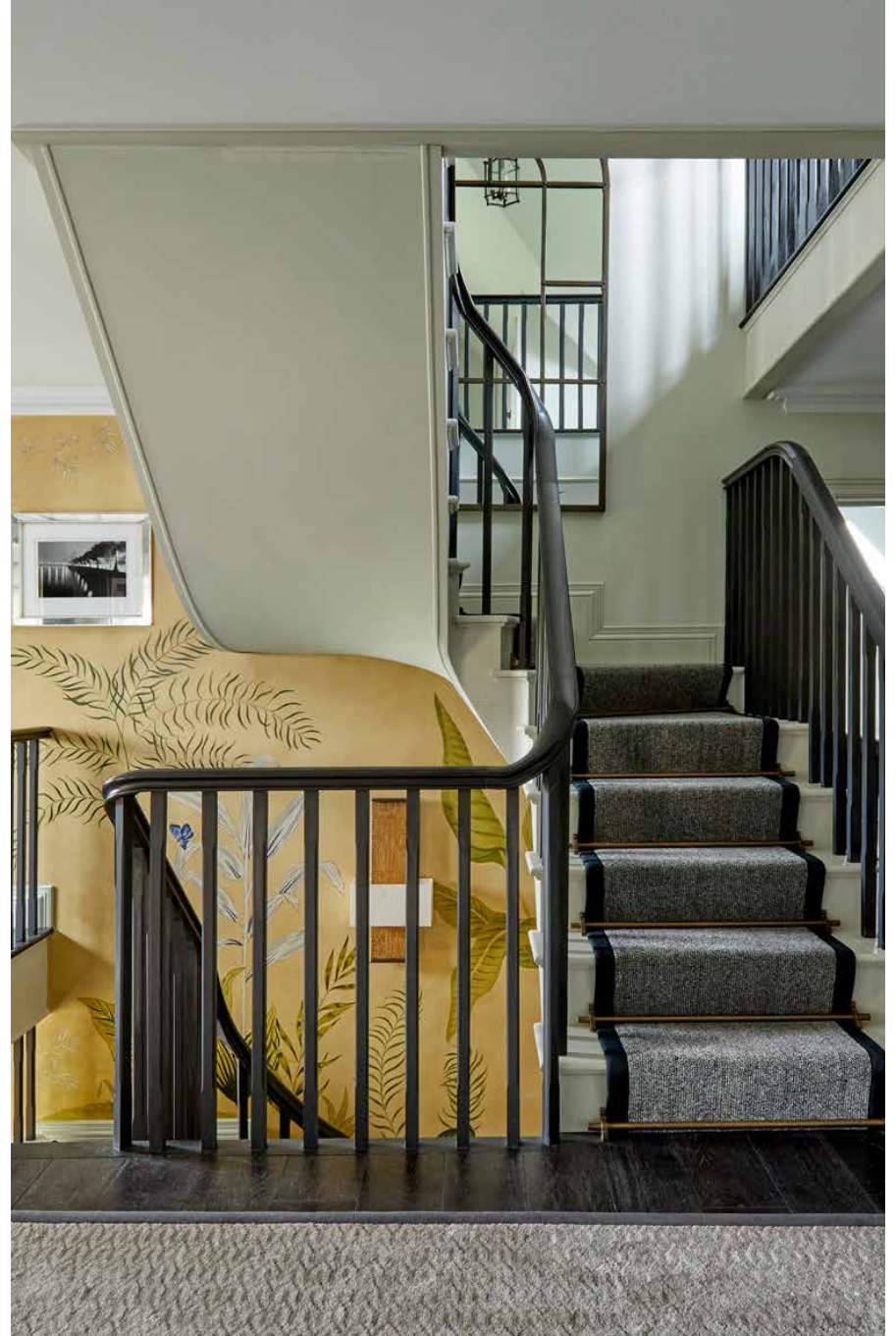




## Kitchen & dining

Entertaining and the everyday are equally catered for. Arranged around a central island, the synchronised kitchen features two butler's sinks, an Aga and range oven that deliver functionality and a farmhouse feel. Prepare lunch on marble worktops, gather around the wooden breakfast table then sink into the inviting day bed in the living area. Three sets of bi-fold doors open onto the garden, extending the hub of the home to the landscaped grounds beyond. A pantry and utility room keeps the cogs turning, tucked discreetly out of sight.







## Bedrooms & bathrooms

A soothing interior palette continues into seven serene bedrooms, designed for switching off. Every detail is selected to soothe, from soft carpets to hand-painted wallpaper and upholstered beds. The standout principal suite is calming and capacious – complete with an expansive dressing room and roll-top bath. Other bedrooms are each served by their own bathrooms, united by lashings of marble, classic styling and walk-in showers.











# Outdoor space

A flagstone entrance hall and sweeping cantilevered staircase set a grand scene while thoughtful details soften the scale: hand-painted murals wash the walls, armchairs flank a fireplace, and a piano stands ready to soundtrack everyday life.

This sense of warmth and welcome extends to the living spaces. A formal reception room is all inviting textures and innumerable sofas. The accompanying dining room leans dramatic – its black ceiling creates a theatrical setting for gatherings around a commanding circular table for 14. Elsewhere a cosy snug and separate playroom carve out dedicated spaces for all the family.









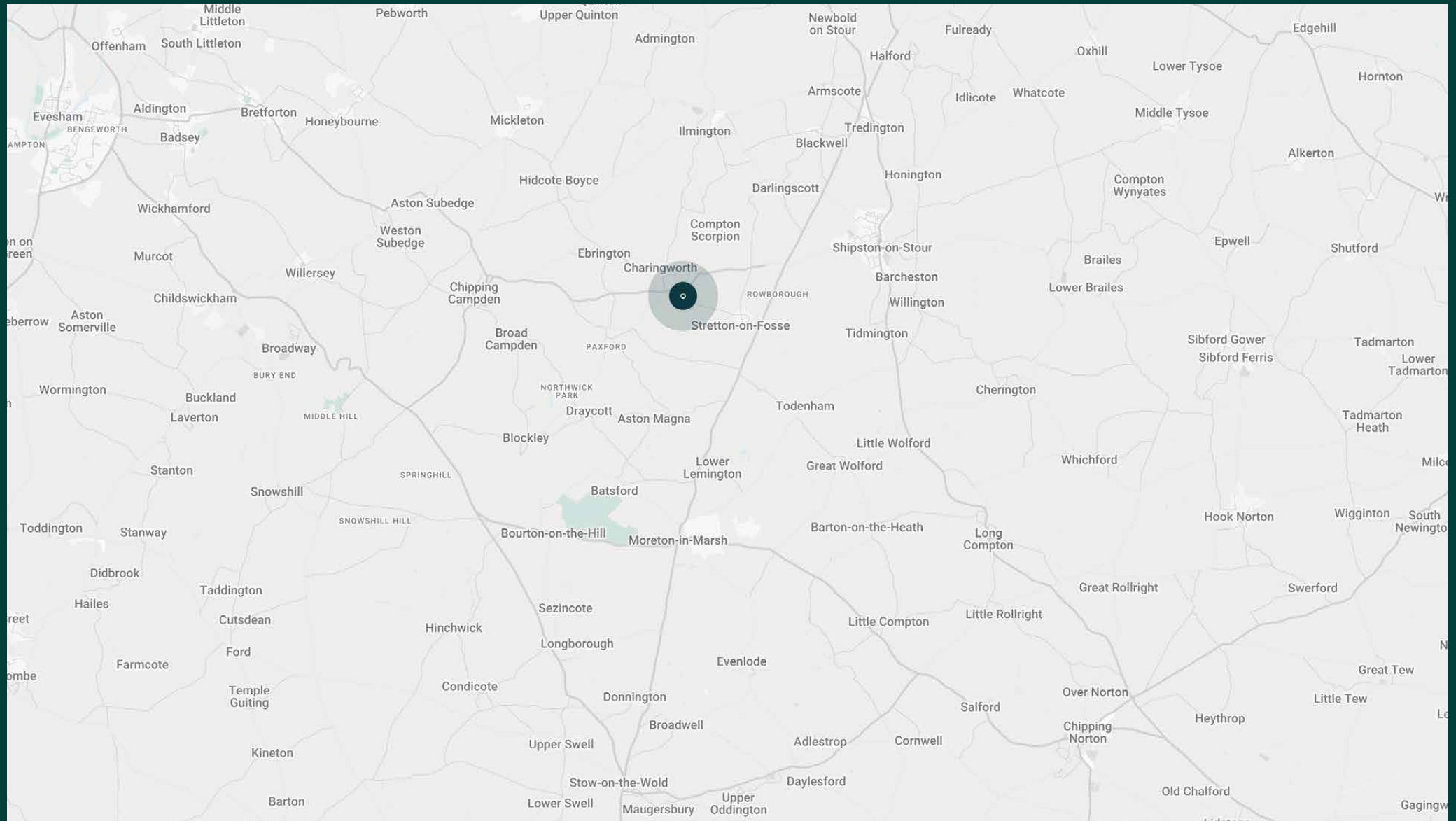
# The surroundings

Just outside the Chipping Campden, Blakemore Farm sits near the border of Gloucestershire and Warwickshire, making it a springboard for many of the region's most celebrated market towns and villages. For a taste of chocolate-box cottages, Stretton-on-Fosse is within walking distance. Also on the doorstep, there's Daylesford Farm for organic produce, delectable small plates at The Legbar and pampering at Bamford Spa. For racegoers, Cheltenham is also close by, while Home Farm airstrip is just 10 minutes' drive.





Blakemore  
Farm  
(DRIVING TIMES)



# Property features

- Farmhouse on substantial grounds
- Open-plan kitchen and reception room
- Additional reception and dining room
- Playroom and snug
- Principal bedroom suite
- Six further bedrooms
- Six further bathrooms
- Study
- Utility room
- Swimming pool / pool house
- Landscaped gardens
- Tennis court
- Stables and paddock

## What's included?

- Personal check in
- On call concierge team
- Weekly Housekeeping



# Guest & concierge services

Tennis coach or yoga instructor. Tables at renowned dining institutions, tickets to sporting or music events, and tours of the surrounding countryside: we're here to ensure stays are nothing short of exceptional. Working alongside our carefully selected partners, we put tastemakers and health and wellbeing experts at our guests' fingertips.

Our statement spaces are just the starting point – to ensure everyone feels at home, our rates include:

- 
- Housekeeping
  - Flexible check-in/out
  - Luxury linens and toiletries
  - Legal compliance on all our homes
  - A personal welcome and arrival essentials
  - Unlimited access to guest services and tailored experiences
  - Professional inspection before and after every stay
  - Complete discretion



# domus stay.

Please get in touch if you have any questions  
or require any further information.

[hello@domusstay.com](mailto:hello@domusstay.com)

+44 (0)20 8168 8880

The property particulars are a guide not statements. Descriptions, photographs, and plans are for guidance only. The Property is offered "subject to contract and references". No warranties, representations, License or Tenancy is given by Domus Stay. Our full disclaimer together with trading names and our Privacy Policy is shown on our website

© Domus Stay 2025. All rights reserved.

