

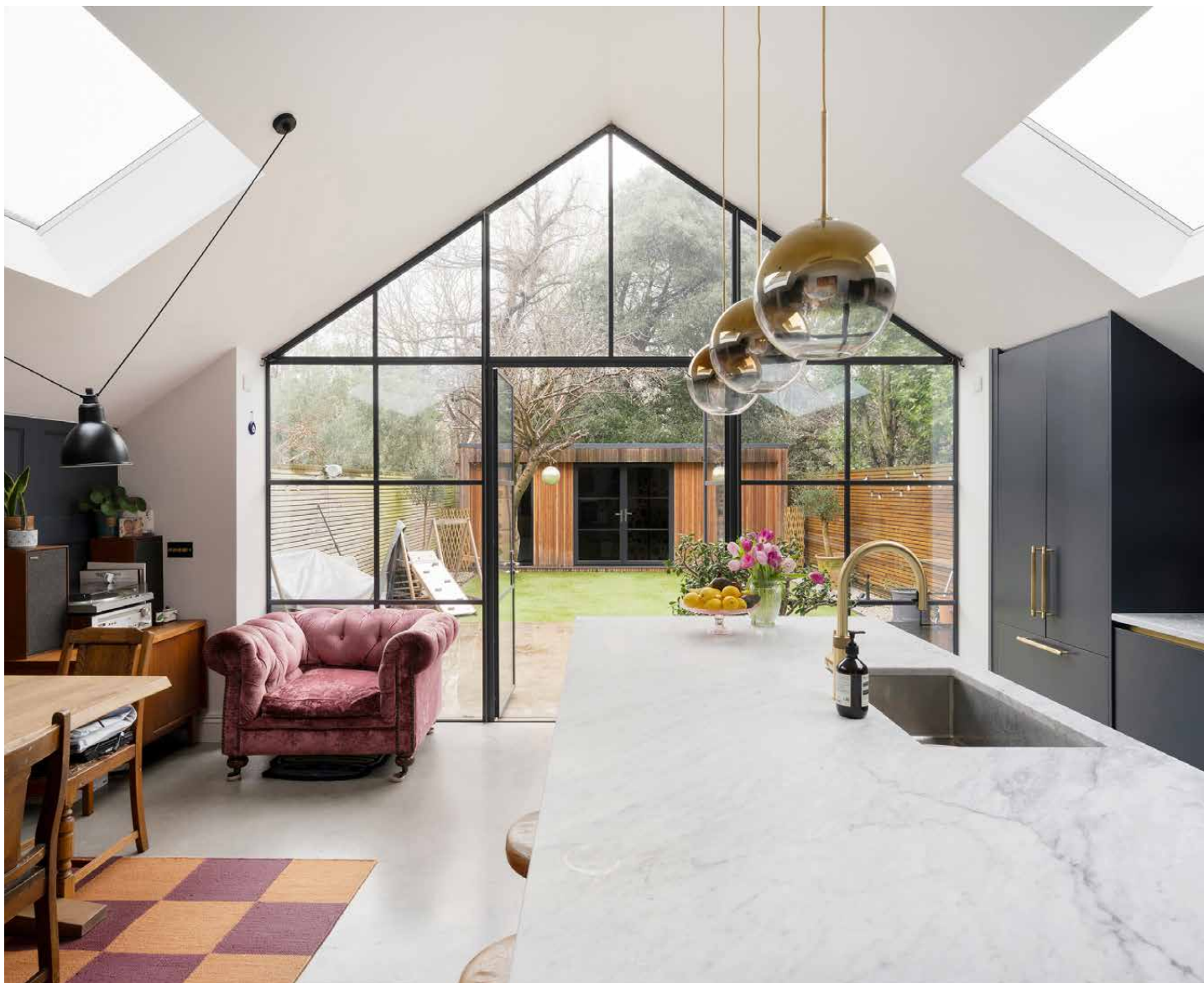
domus
stay.

Baldwyn Gardens

ACTON

3 Bedrooms, 2 Bathrooms
For 6 guests





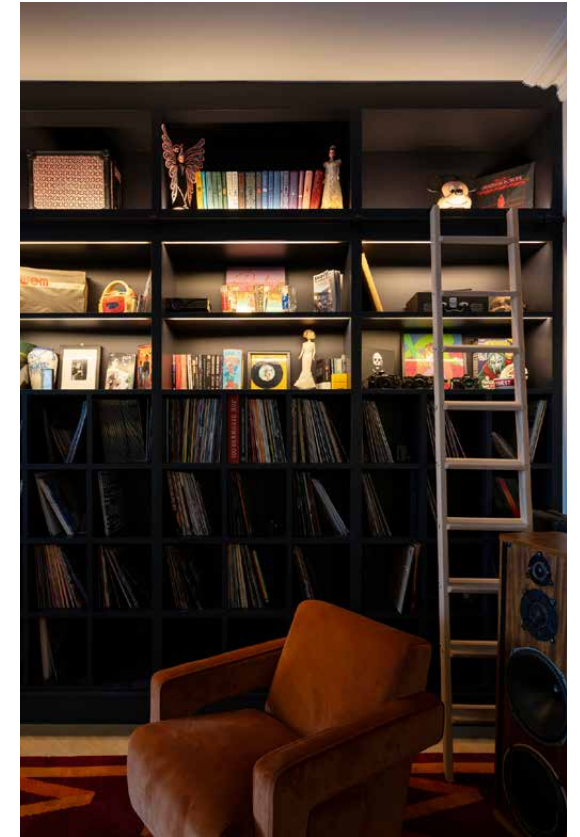
A three-bedroom house to rent in charming Poet's Corner, one of West London's most sought-after spots.

A classic, revived. Handsome period architecture has been reimagined for family life on Baldwyn Gardens. Within walking distance of popular Churchfield Road, this four-storey home is perfectly placed to connect – and switch off. Outside, a smart red brick façade updated with sleek, black-framed windows. Inside, deep tones continue the contemporary edge.

The living spaces

Living spaces unfold in layers, creating a sense of openness that draws you in. Everyday ease begins in the double reception room, flowing from the hallway through fully retracting doors. One half is made for slowing down, with walls of library shelving for records and books, vintage Celestion Ditton 66 speakers and a full hi-fi system to set the tone.

The mood carries through to the living area, anchored by a large Barker and Stonehouse L-shaped sofa, widescreen TV and wood burner. Dark accents keep things sharp, while a huge bay window floods the space with light.











The kitchen

To the rear, a dramatic kitchen extension opens the house up completely, drawing the eye straight to the garden. Floor-to-ceiling glass rises to the apex of the roof, while two oversized skylights crown either side, making the space a magnet for natural light.

This is a kitchen designed to impress: sculptural pendant lighting, satin-sealed concrete floors and dark cabinetry create impact. Siemens smart ovens, a Fisher & Paykel fridge freezer and Quooker tap perform quietly in the background alongside a concealed utility room. Drift between the oak dining table and marble island for easy entertaining.



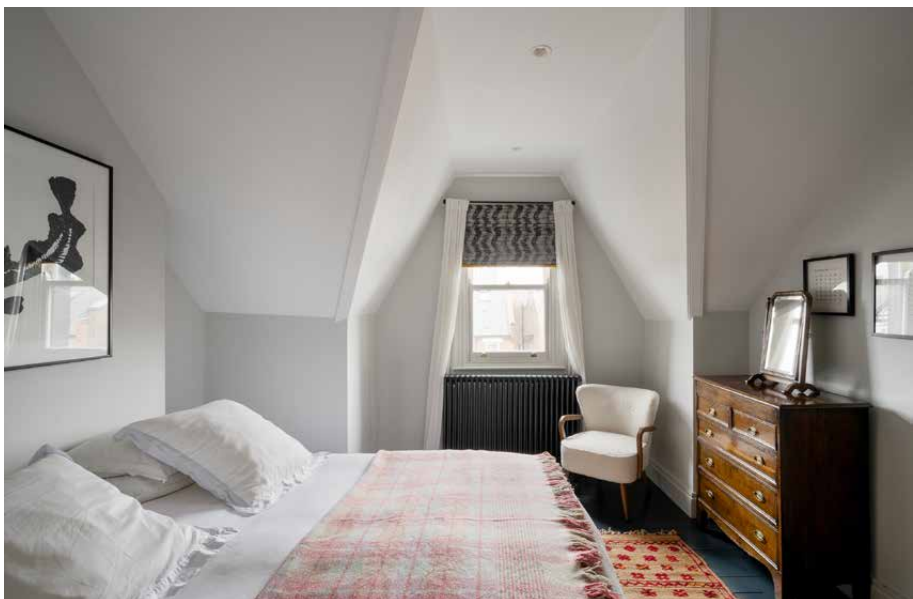
Bedrooms & bathrooms

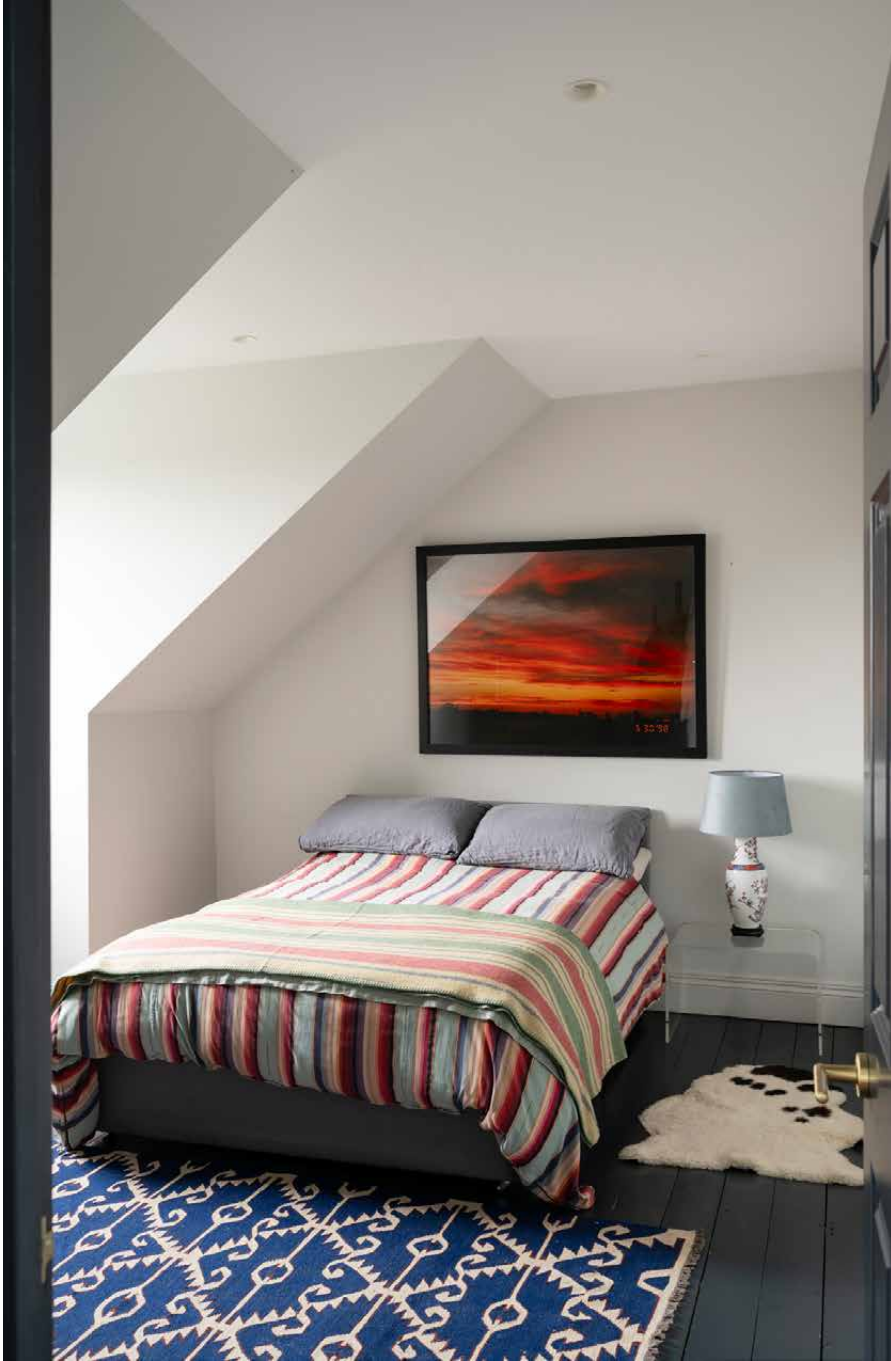
The first floor is almost entirely dedicated to the generous principal suite, spanning a sleeping space, walk-in wardrobe, study zone and additional dressing area. The en suite bathroom is soothing and spa like, with micro cement walls and floors, a double sink and deep bathtub. A watercolour mural wall adds a final layer of calm, while underfloor heating cocoons the space in comfort.

Two further bedrooms share a sense of retreat, pairing white walls with dark floorboards. A contemporary shower room serves these rooms, finished with white metro tiles and deep navy walls.

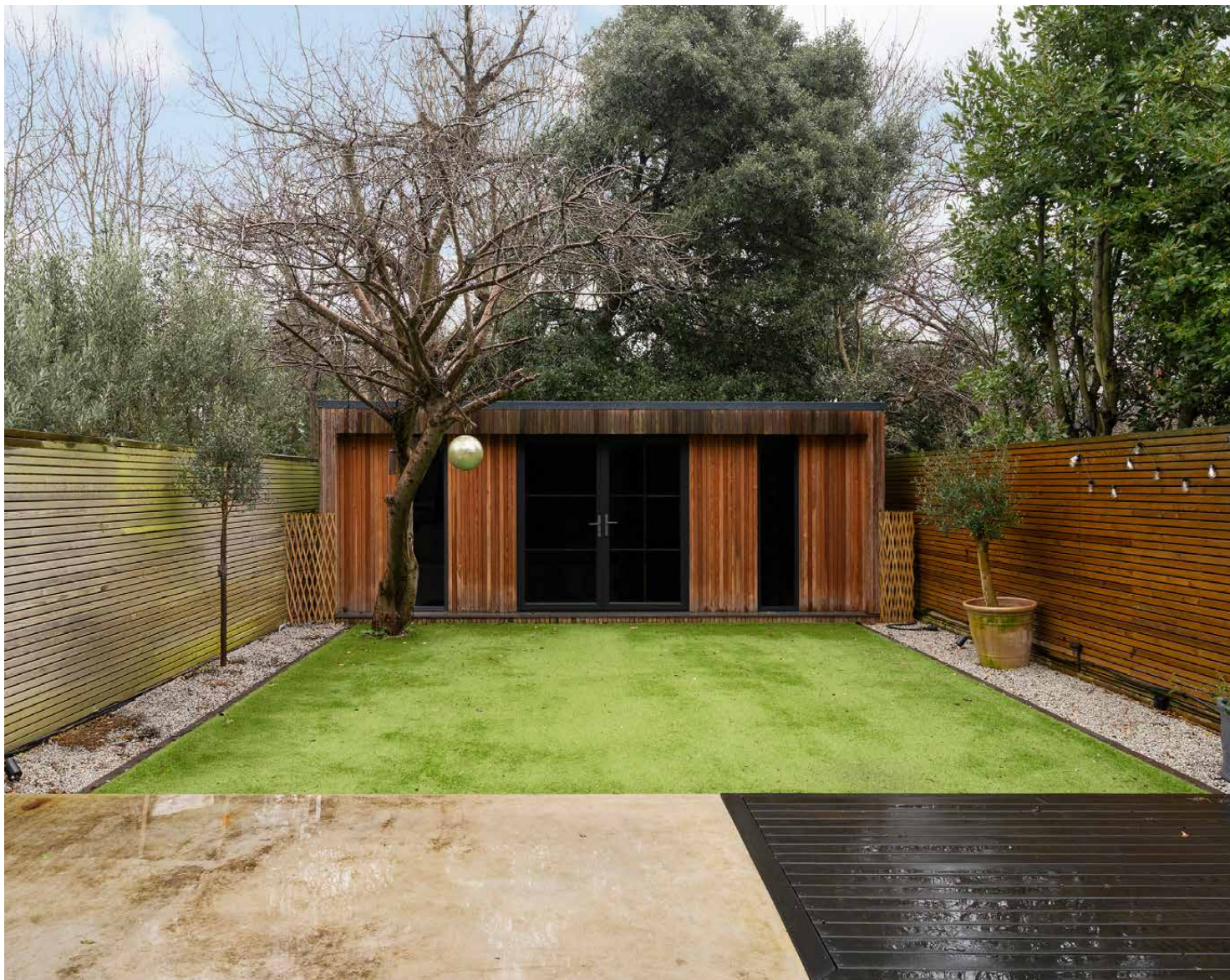










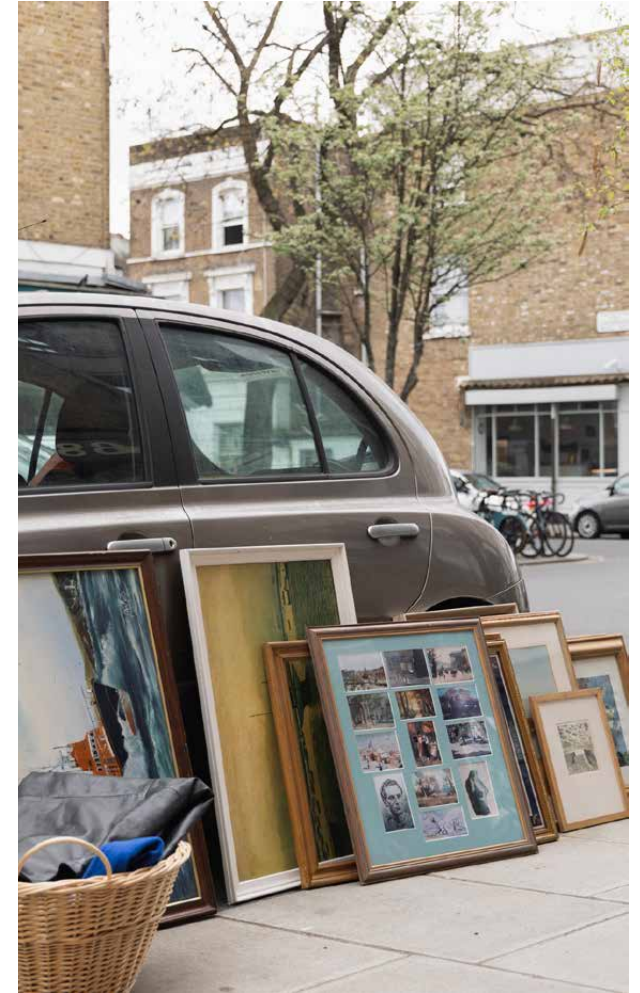


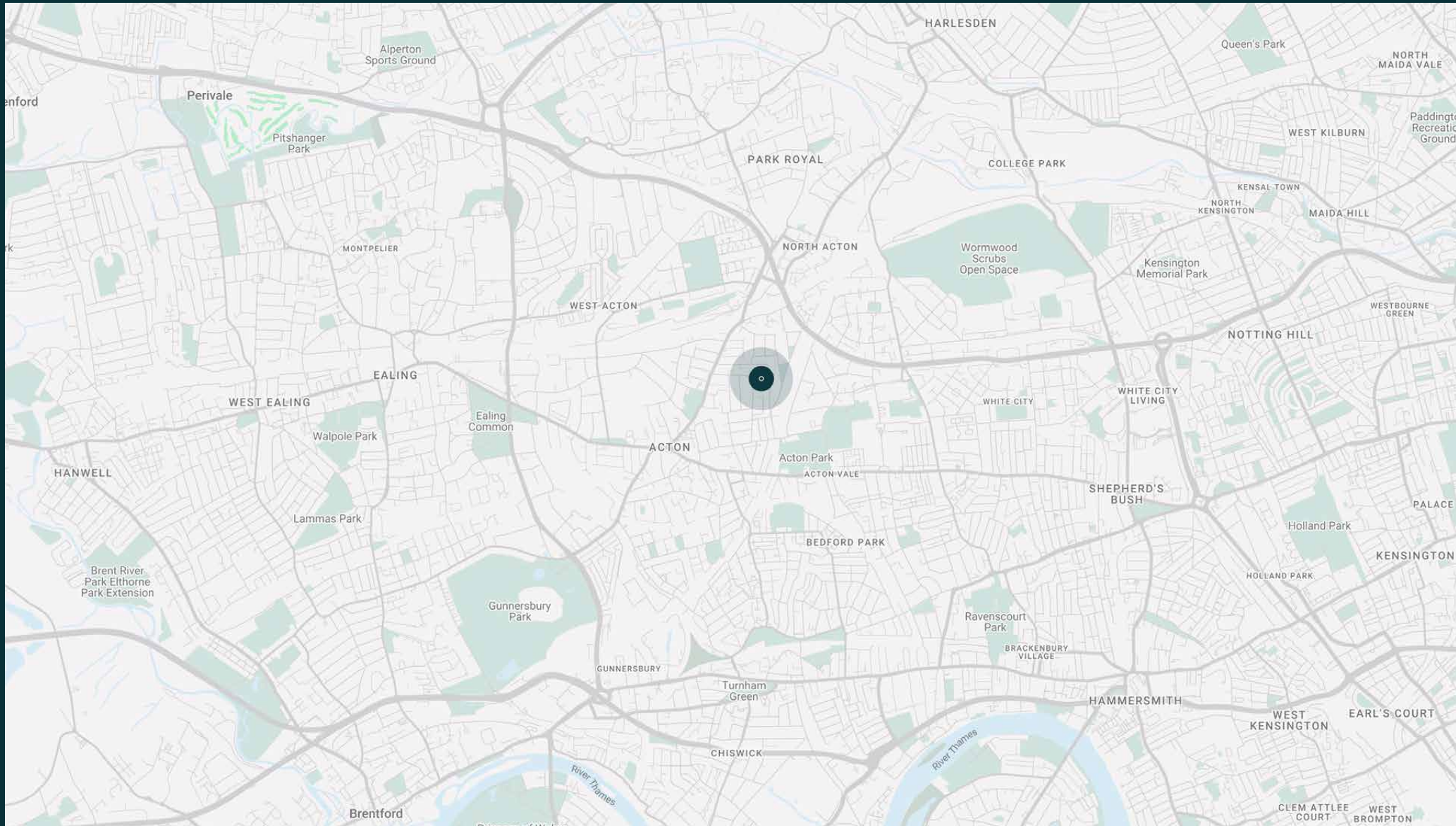
Outdoor space

Beyond the full-height fenestration that anchors the kitchen, a manicured garden awaits with a patio and lawn, entirely private and sheltered by towering trees.

The neighbourhood

In the heart of the Poet's Corner community, Baldwyn Gardens sits in a characterful conservation area with a tight-knit community feel. The liveliness of Churchfield Road is a short stroll away. Stop for morning coffee at Fields or Kave, beat the weekend sourdough queue at Layla Bakery, or pick up supplies at Basil & Tom's greengrocers or much-loved deli Churchfield Food Store. Keep it local come evening, with a drink at Vindinista Wine Shop & Bar or The Station House. Acton Park is also close by for runs, fresh air or a game of tennis. Several top-rated schools are in walking distance, making this an ideal catchment area for families.





Property features

- Family home in sought-after Poet's Corner
 - Standout contemporary kitchen extension
 - Double reception room
 - Generous principal bedroom suite with study & walk-in wardrobe
 - Two further bedrooms
 - Shower room
 - Private garden
 - Utility room and cloakroom
 - Underfloor heating in kitchen and principal suite
 - Cellar
 - London Borough of Ealing
-



Guest & concierge services

Our concierge team are here to help guests settle in, seamlessly. Centre court tickets to Wimbledon, Premier League seats with the best views, Savile Row tailors on standby, or a private chef to cater to individual tastes – we aim to elevate every stay.

From the moment of booking with us, each guest has a single point of contact to finesse the details. Our statement spaces are just the starting point – to ensure everyone feels at home, our rates include:

- Weekly housekeeping
- Flexible check-in/out
- Luxury linens and Bamford toiletries
- Legal compliance on all our homes
- A personal welcome and arrival essentials
- Unlimited access to guest services and tailored experiences
- Professional inventory inspection before and after every stay
- Access to a curated portfolio of sole agency properties



domus stay.

Please get in touch if you have any questions
or require any further information.

hello@domusstay.com

+44 (0)20 8168 8880

The property particulars are a guide not statements. Descriptions, photographs, and plans are for guidance only. The Property is offered "subject to contract and references". No warranties, representations, License or Tenancy is given by Domus Stay. Our full disclaimer together with trading names and our Privacy Policy is shown on our website

© Domus Stay 2025. All rights reserved.

