

domus
stay.

Astor Cottage

THE COTSWOLDS & COUNTRY

4 Bedrooms, 4 Bathrooms
For 8 guests





This four-bedroom luxury Cotswolds cottage to rent is a calming, cocooning retreat.

Country living, artfully layered – with timber beams overhead, patterns at play and inviting gardens beyond.

Surrounded by verdant countryside and rich woodland, Chilson reveals itself as a quietly clandestine hamlet. Set along a gentle stretch of cottages, this four-bedroom home unfolds with an assured sense of heritage, its character flowing naturally from the thatched exterior to the refined indoors. Thanks to the considered eye of celebrated interior designer Jane Churchill, layers of pattern, colour and texture afford a comforting, quietly handsome setting.

The living spaces

With wooden ceiling beams overhead and richly textured carpets underfoot, the drawing room unfolds with classic refinement. A generous fireplace anchors the space, flanked by patterned seating arranged for easy socialising or curling up with a book. At the far end, a home bar and games table invite leisurely evenings of cards, cocktails and lingering conversations.









Kitchen & dining

Smooth worktops, clean-lined cabinetry and softly diffused sunlight set a calm, convivial tone in the kitchen. Friends and family gather around the circular dining table, positioned beneath conservatory glass panels that flood the room with light. Botanical blinds and a green-painted trellis frame garden views, blurring the boundary between indoors and out.







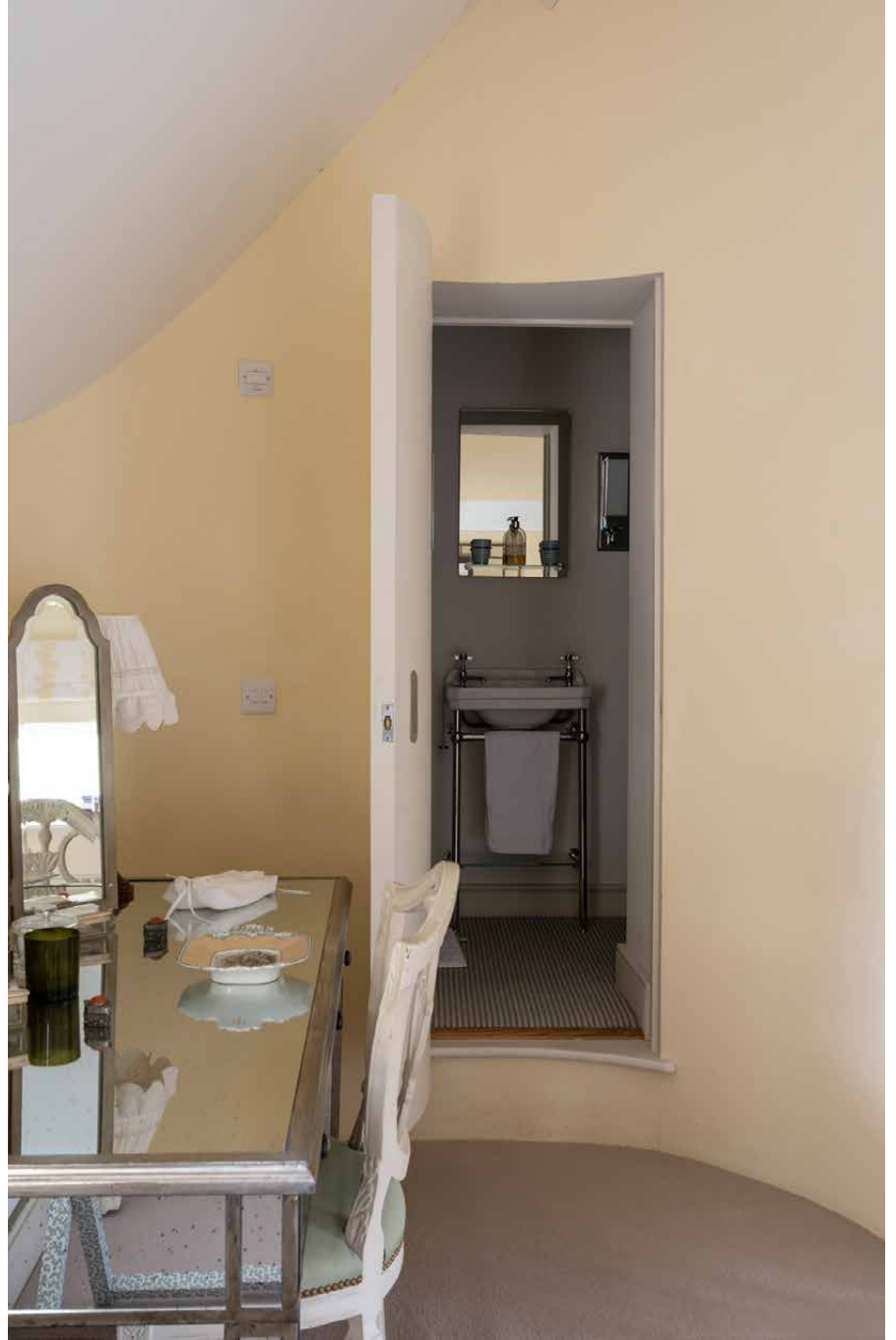
Bedrooms & bathrooms

Individually styled yet united by a country-pile sensibility, each of the four bedrooms offers a carefully considered retreat. One double bedroom is wrapped in blue-scale tones, flowing from striped wallpaper to fabric headboards and full-length curtains – continuing into the en suite bathroom with its charming sprigged wallpaper and bathtub.

Another double bedroom places the bed beneath lofty ceiling beams, with a cleverly carved shower room tucked into the curve of the wall. Ideal for younger ones, there are twin beds in one of the additional guest bedrooms.











Outdoor space

Beautifully manicured gardens create an inviting backdrop for unhurried days outdoors. The patio is designed for easy al fresco living, moving seamlessly from long summer lunches to evening sundowners. A wood-fired pizza oven invites everyone to cook, feast and gather well into the night. Beyond, lawns roll off the hills to the back of the property.

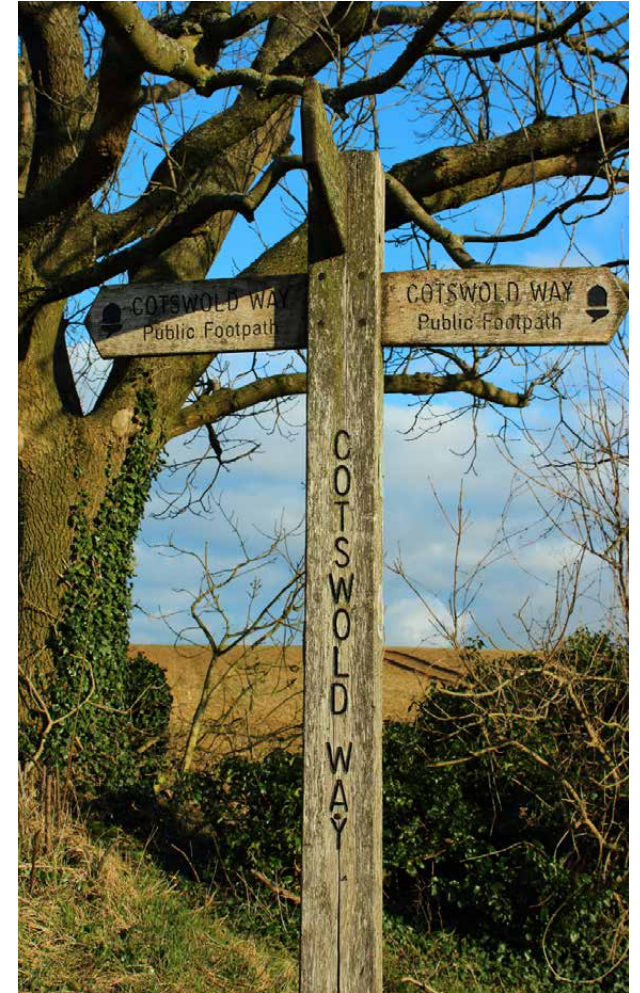


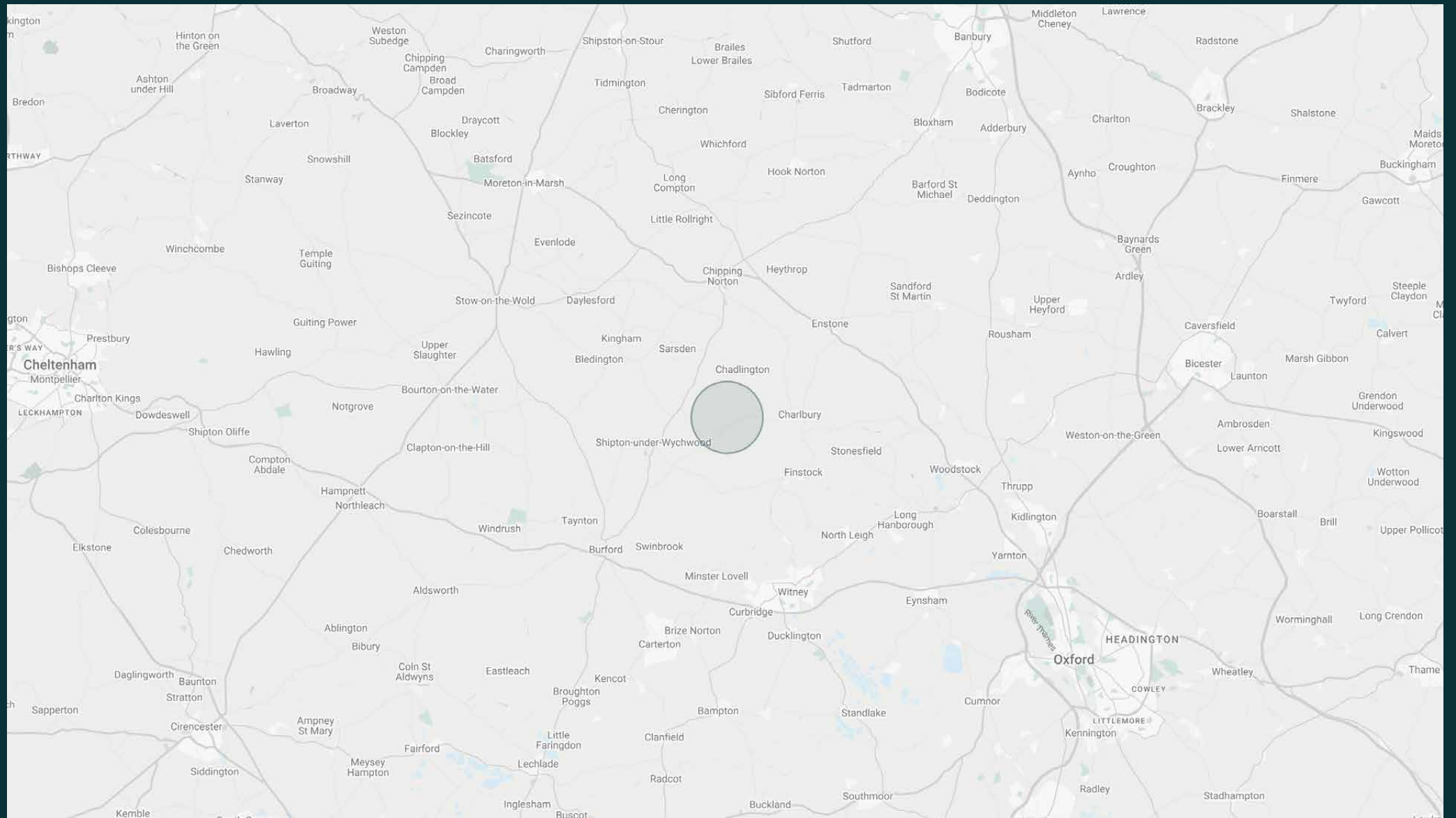
The surroundings

Tucked away amid rolling green hills, Chilson is a charming hamlet that promises true rest and relaxation – with the best of the Cotswolds close at hand. In summer, nearby Cornbury Park hosts the iconic Wilderness Festival, four award-winning days of live music, arts and theatre. Within a 20-minute drive, you'll find Daylesford, Soho Farmhouse, Stow-on-the-Wold and Bourton-on-the-Water, as well as Woodstock, home to Blenheim Palace and its scenic walks and seasonal events. Dining options abound, from The Wild Rabbit in Kingham to The Double Red Duke in Clanfield and The Chequers in Chipping Norton.

Travel times (by car):

- Daylesford: 15 mins
- Oxford: 45 mins





Property features

- Open-plan kitchen and dining room
- Formal drawing room
- Three bedroom suites
- One further bedroom
- One further bathroom
- Boot room
- Private landscaped garden with pizza oven

What's included?

Personal check-in

Concierge and customisable services available to add

Housekeeping

Approx. 3,500 sq ft / 325 sq m



Guest & concierge services

Tennis coach or yoga instructor. Tables at renowned dining institutions, tickets to sporting or music events, and tours of the surrounding countryside: we're here to ensure stays are nothing short of exceptional. Working alongside our carefully selected partners, we put tastemakers and health and wellbeing experts at our guests' fingertips.

Our statement spaces are just the starting point – to ensure everyone feels at home, our rates include:

-
- Housekeeping
 - Flexible check-in/out
 - Luxury linens and toiletries
 - Legal compliance on all our homes
 - A personal welcome and arrival essentials
 - Unlimited access to guest services and tailored experiences
 - Professional inspection before and after every stay
 - Complete discretion





Please get in touch if you have any questions
or require any further information.

hello@domusstay.com

+44 (0)20 8168 8880

The property particulars are a guide not statements. Descriptions, photographs, and plans are for guidance only. The Property is offered "subject to contract and references". No warranties, representations, License or Tenancy is given by Domus Stay. Our full disclaimer together with trading names and our Privacy Policy is shown on our website

© Domus Stay 2025. All rights reserved.

