

domus
stay.

Coleherne Road

South Kensington SW10

2 Bedrooms, 2 Bathrooms
For 5 guests





Japanese-inspired design brings a calming aura to this two-bedroom apartment, set within a traditional South Kensington townhouse.

With its Shoji-style window screens and sapele wood wall panels, there's a peaceful zen-like energy to Coleherne Road. Eastern sensibilities have guided the interiors, grounding the space in simplicity.

A restricted palette of tones and textures creates a calming backdrop, bringing a natural sense of flow to the open-plan reception room. No detail has been overlooked. Bespoke kitchen units by Concept Linea have been layered with Delabré brass by De Castelli to striking effect. Silestone worktops and a solid walnut dining table by Ado Avdagić balance form with function. Underfoot, large format Grespania Ceramica tiles in lava iron continue the earthy, organic aesthetic.

The kitchen leads seamlessly to a seating area, where custom-made paper screens diffuse soft light through the space via a generous bay window. A pair of Piero Lissoni velvet tuxedo sofas bathe in the glow. As the daylight ebbs, configure the smart LED spotlights and settle down in front of the TV.

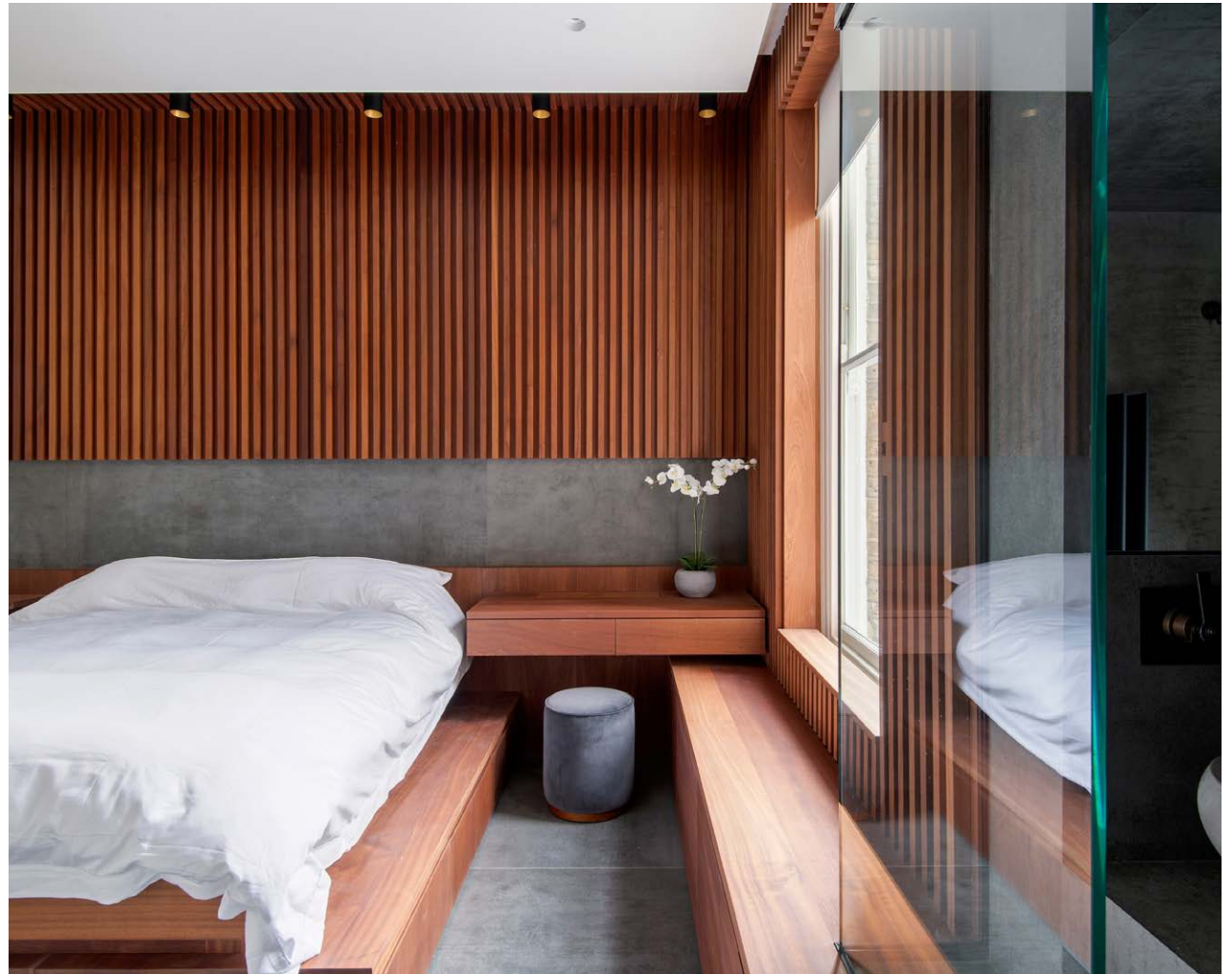


Natural materials and a minimalist, Japanese-inspired aesthetic create a meditative atmosphere.



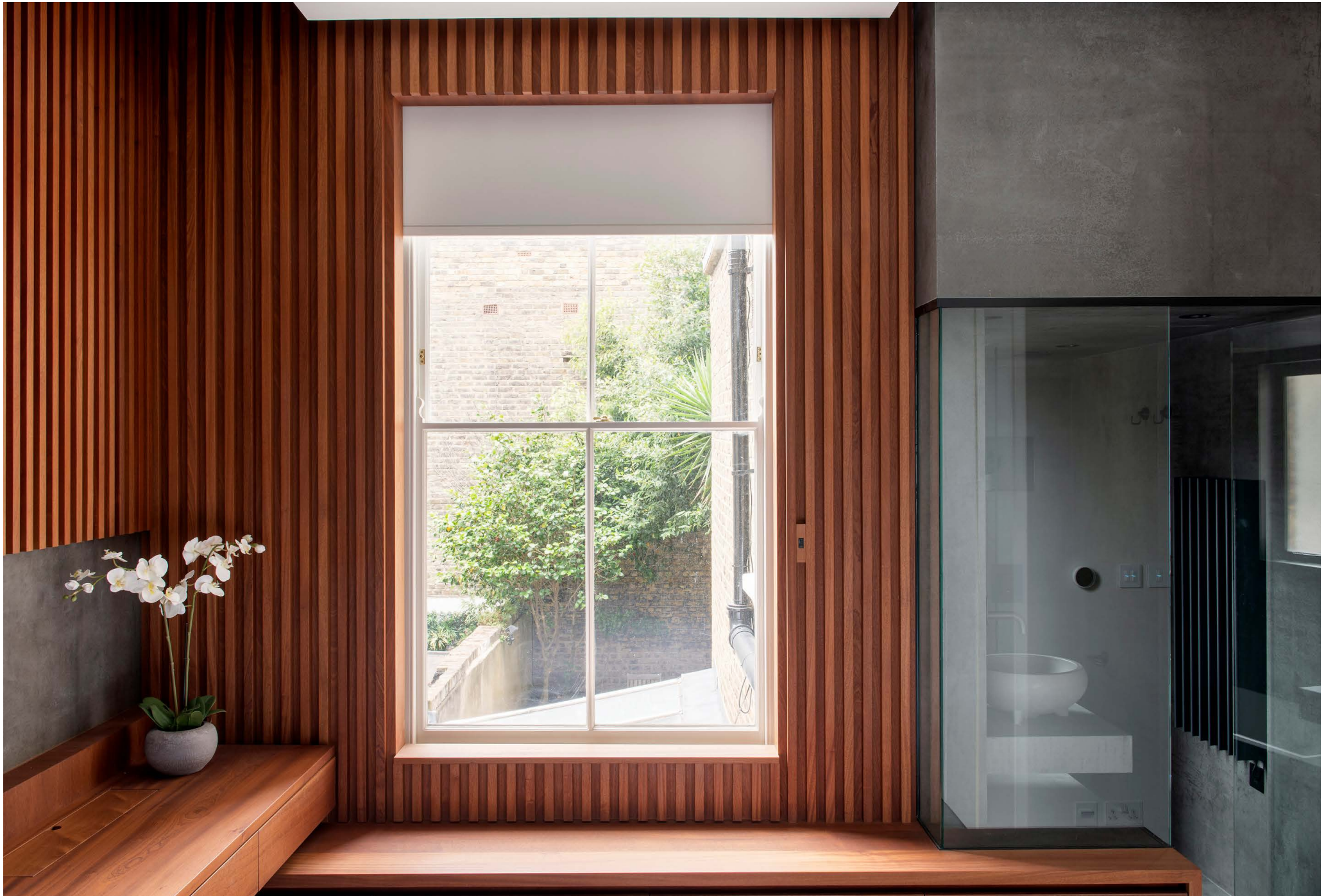
“

With its Shoji-style paper window screens and sapele wood wall panels, there's a peaceful zen-like energy to Coleherne Road.

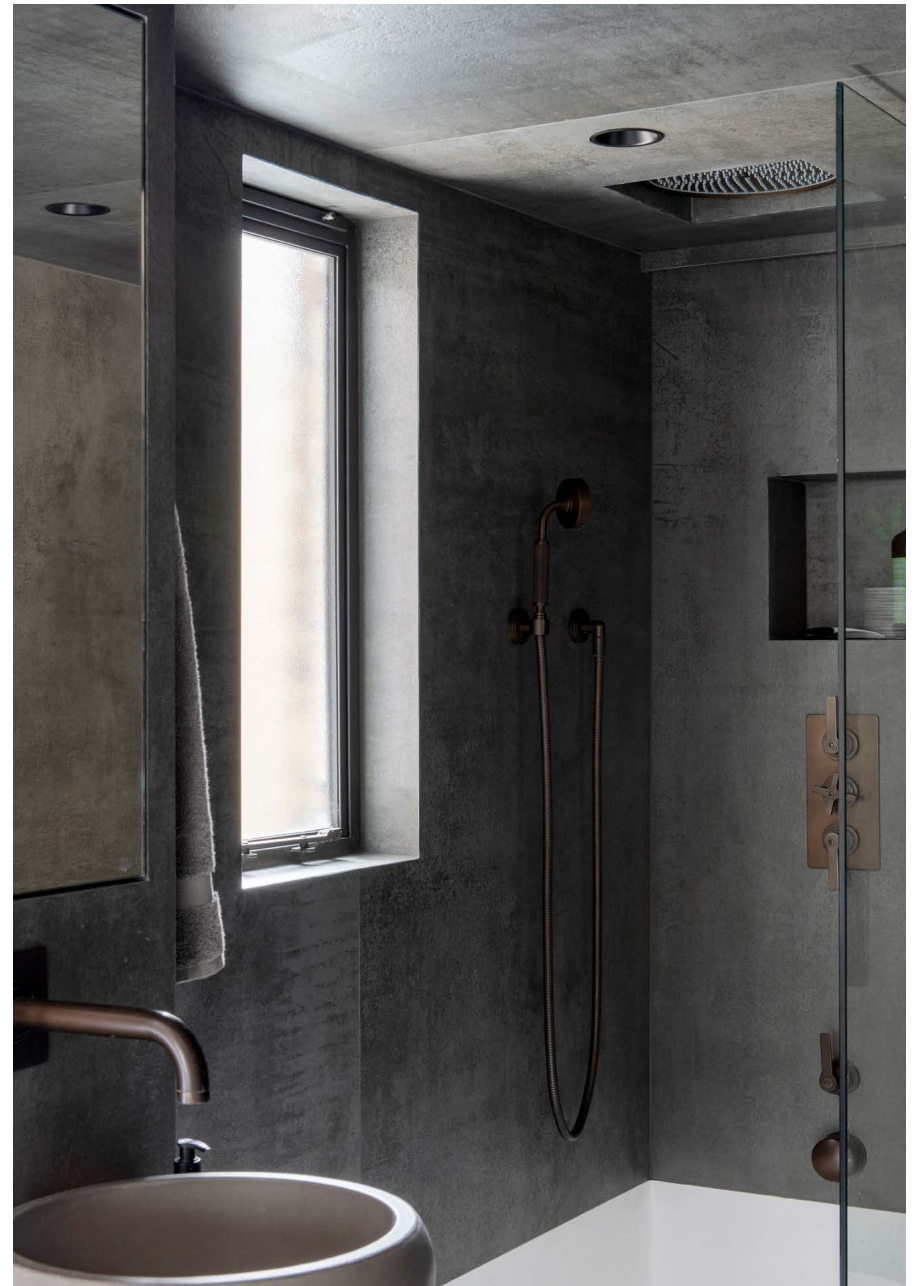


Clean lines are smoothed with natural materials in both bedrooms. Slide back the 3.5-metre-tall door to the principal suite and you'll find tactile wood, stone and an inviting super king sized platform bed for a restful night's sleep. Integrated storage keeps distractions to a minimum. Sitting behind a glass door, dark stone covers every surface in the en suite, creating a comforting cocoon. Ease into the day in the deep bathtub, with a rainfall shower overhead.





Tucked away at the back of the apartment, a streamlined shower room and versatile guest bedroom. Meticulously planned to optimise the floorspace, two folding beds by Pozzoli Milan – one king-sized, one single – pull out from the wall. Come daytime, tidy away to transform the room into a convenient office.





LOCATION

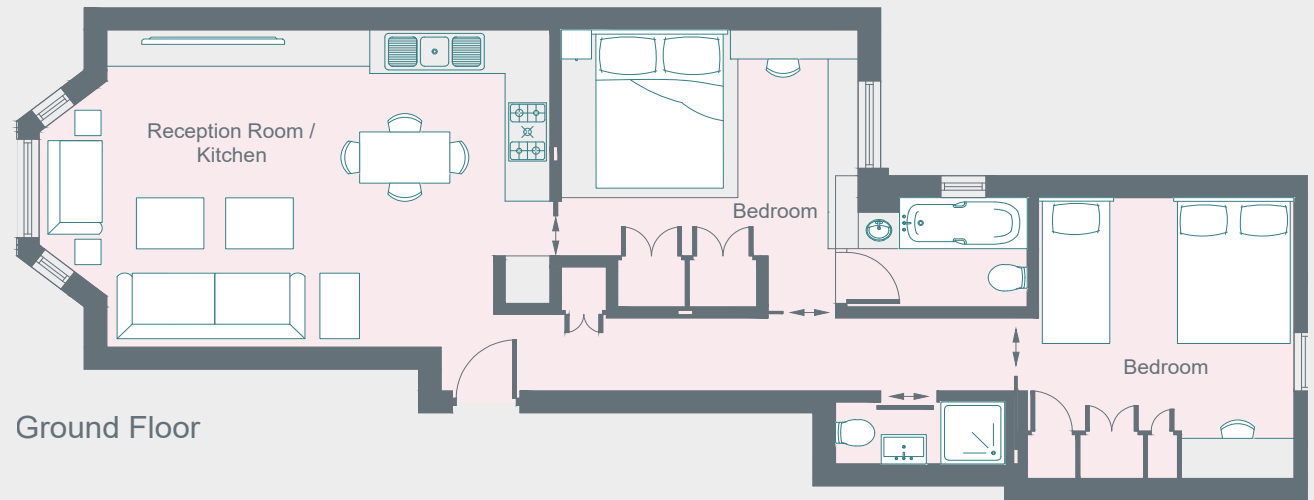
Buzzing, creative South Kensington is your backdrop here - the perfect spot to wine, dine or watch the world go by.

Sitting among the boutiques and brasseries of SW10 but within walking distance of South Kensington's world-renowned museums, tick off the sights or leave the guidebook at home – there's plenty to entertain either way. Refresh your wardrobe on the King's Road, refuelling with a leisurely lunch at Sophie's or Medlar. If the weather obliges, grab a gelato cone from Badiani; enjoy it en route to The Victoria & Albert Museum or the historic Brompton Cemetery – the resting place of Emmeline Pankhurst. In the evening, join the locals for a drink at The Hollywood Arms or catch some live music at Troubadour.



PROPERTY HIGHLIGHTS

- Open-plan reception room and kitchen
- Architect designed
- Principal bedroom suite
- Guest bedroom/office with concealed beds
- Shower room
- Royal Borough of Kensington & Chelsea



Approximate Area = 71.2 sq m / 766 sq ft

Drawn for Illustration Purposes Only
fourwalls-group.com 59096





Please don't hesitate to get in touch if you have any questions or require any further information.

hello@domusstay.com

+44 (0)20 8168 8880

Domus Stay provides the perfect combination of property, place and personal service for the world's most remarkable people. If you have any questions, or if we can help in any way, please contact us on the above number. Be it about a property you have, a property you want, dates to check or any special requirements you may need, we'd love a chat.

