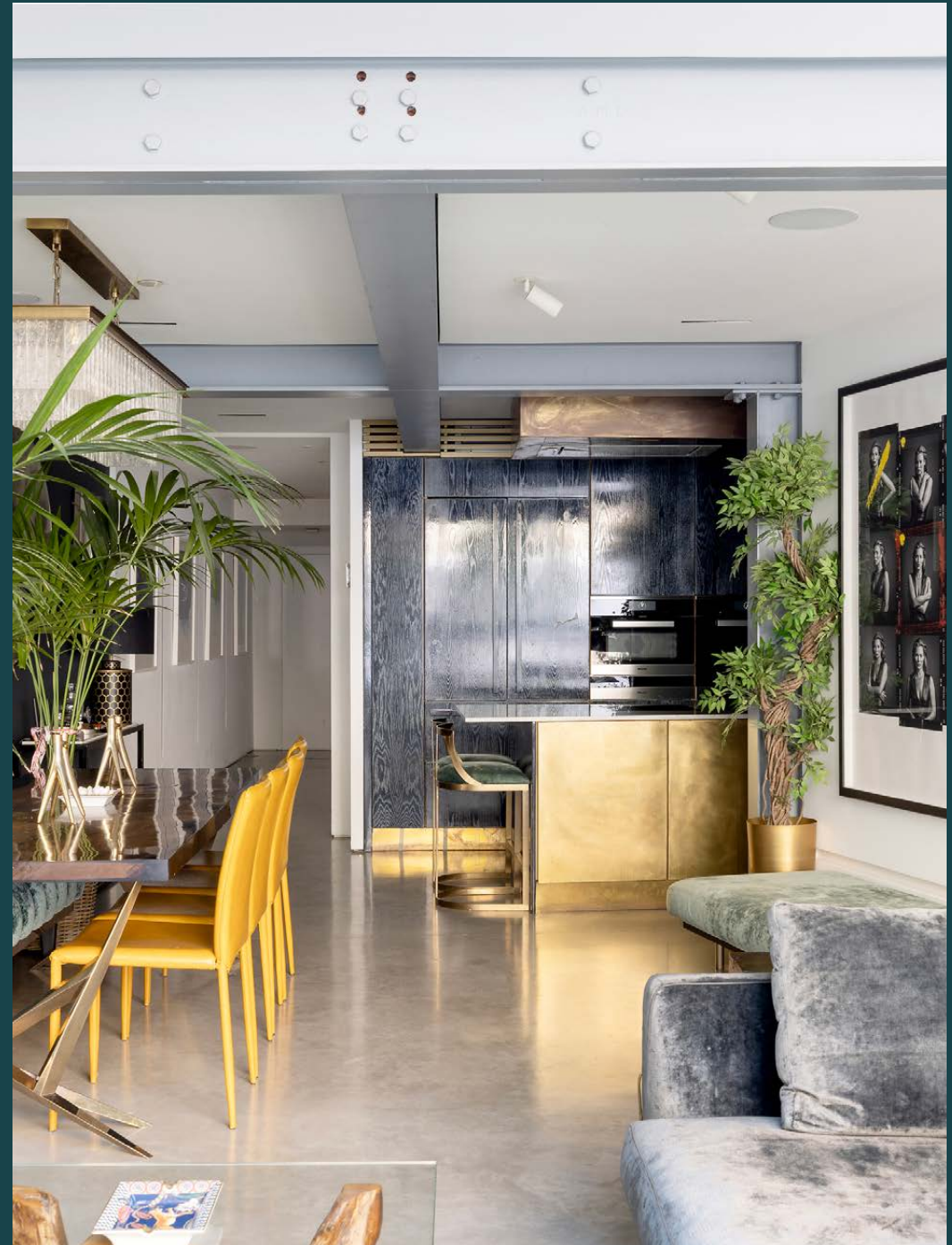


domus
stay.

Upper Addison Gardens

Holland Park W14

2 Bedrooms, 2 Bathrooms
For 4 guests





Concealed beyond a soaring bay-fronted townhouse, this two-bedroom apartment offers indulgent lateral living backdropped by dynamic design and industrial architecture.

A picturesque enclave in Holland Park, Upper Addison Gardens effortlessly impresses with esteemed heritage residences and well-presented façades. Arranged across the garden level of a period townhouse, this two-bedroom apartment takes a striking departure from its heritage roots.

Comparable to a contemporary gallery, the entrance hall captivates with glossy concrete floors and whitewashed walls. Colour-changing LED lights are carved neatly into the walls, artfully leading the way to an expansive open-plan kitchen, dining and reception room. A kaleidoscope of tone and texture, material and structural creativity plays out against an inherently industrial backdrop. An eye-catching kitchen pairs dark wooden cabinets with integrated appliances, while a marble feature wall makes for a dramatic splashback. Centring the space, a brushed gold island offers space to cook or indulge in leisurely breakfasts. Dining and dinner parties come with an air of grandeur, crowned by an art-deco inspired chandelier.

On restful evenings, sink back into a generous lounge arranged around a wide-screen TV, set into charcoal-toned marble. Floor-to-ceiling glazing floods the space with natural light, drawing back to reveal a private garden. It's a tranquil setting with bench seating and well-manicured greenery, tailor-made for London's sunny months.





An eye-catching kitchen pairs dark wooden cabinets with integrated appliances, while a marble feature wall makes for a dramatic splashback.



“

A kaleidoscope of tone and texture, material and structural creativity plays out against an inherently industrial backdrop.







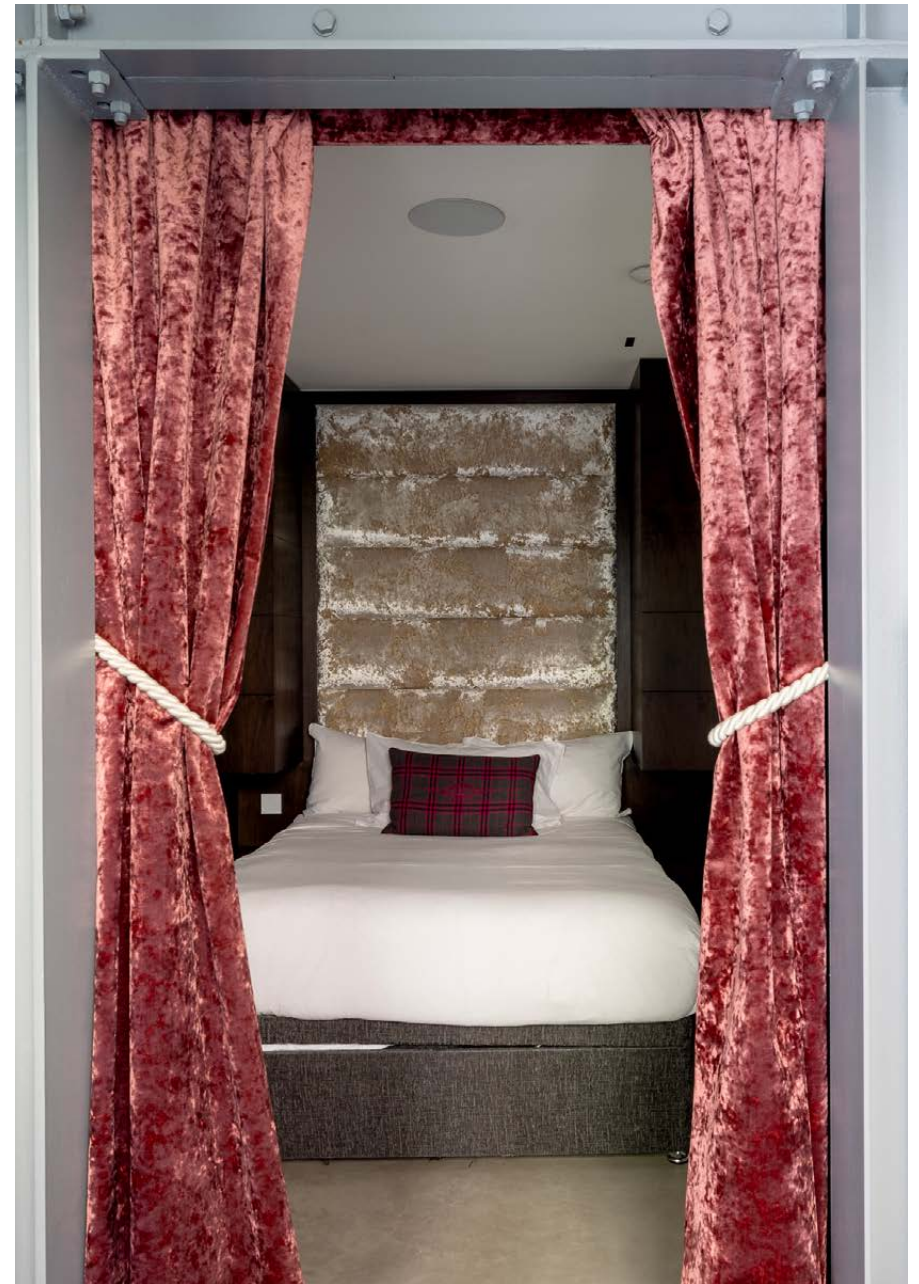
A more minimalist approach is taken in the principal bedroom, where bay windows gently illuminate a soft tonal palette. The en suite bathroom takes a dramatic turn with dark colours and a black-brick rainfall shower.







In the guest bedroom, velvet curtains draw back to reveal the sleeping area, while a study space offers direct access to the garden. An indulgent en suite bathroom serves this room, featuring marble tiling and a freestanding bathtub.

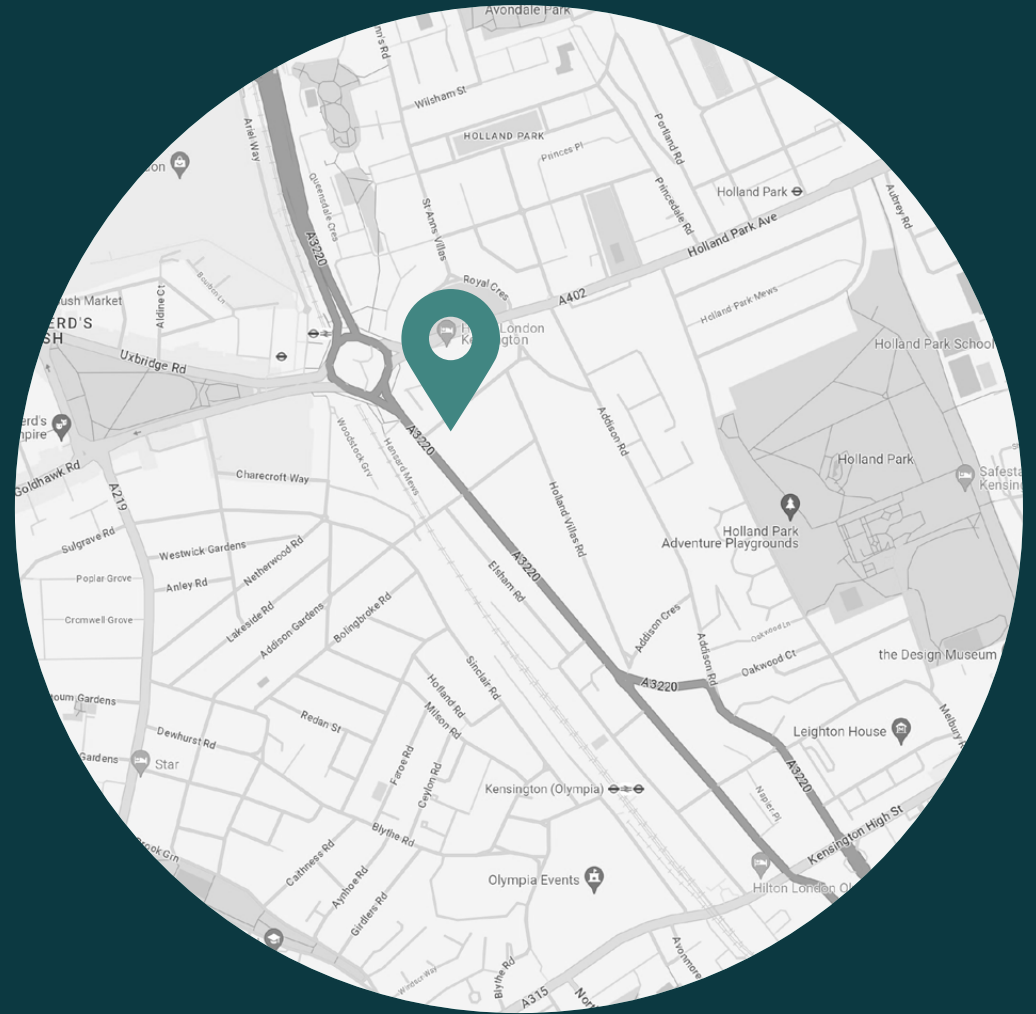




LOCATION

A tranquil enclave hidden away in Holland Park, Upper Addison Gardens is just moments away from lively Shepherd's Bush and eclectic Notting Hill.

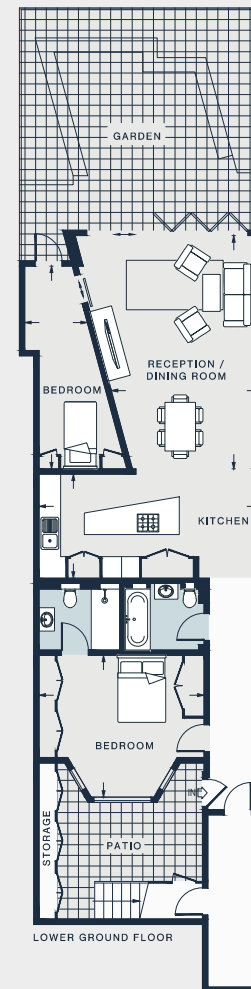
The home is a short walk away from village-like Clarendon Cross – a cluster of independent shops with favourites including Melt Chocolates, Julie's Restaurant and Myriad Antiques. The 54 acre eponymous park centres the neighbourhood: wander around the peaceful Kyoto Gardens before a meal at Belvedere or exhibition at the Design Museum. Westfield Shopping Centre and Soho House White City are close-by for days of retail therapy and nights spent socialising.





PROPERTY HIGHLIGHTS

- Open-plan kitchen, dining and reception room
- Principal bedroom suite
- Guest bedroom
- One further bathroom
- Private garden
- Royal Borough of Kensington & Chelsea



RECEPTION /
DINING ROOM
21'3 x 14'0 (6.4m x 4.2m)

KITCHEN
20'5 x 9'6 (6.2m x 2.9m)

BEDROOM
18'6 x 5.10 (5.6m x 1.7m)

BEDROOM
15'2 x 13'0 (4.6m x 3.9m)

Approx. Gross Internal Area = 1216 sq ft / 113 sq m (Including Storage)

Floor plans are for illustrative purposes only and not to scale. Compliant with RICS code of measuring practice.



Please don't hesitate to get in touch if you have any questions or require any further information.

hello@domusstay.com

+44 (0)20 8168 8880

Domus Stay provides the perfect combination of property, place and personal service for the world's most remarkable people. If you have any questions, or if we can help in any way, please contact us on the above number. Be it about a property you have, a property you want, dates to check or any special requirements you may need, we'd love a chat.

