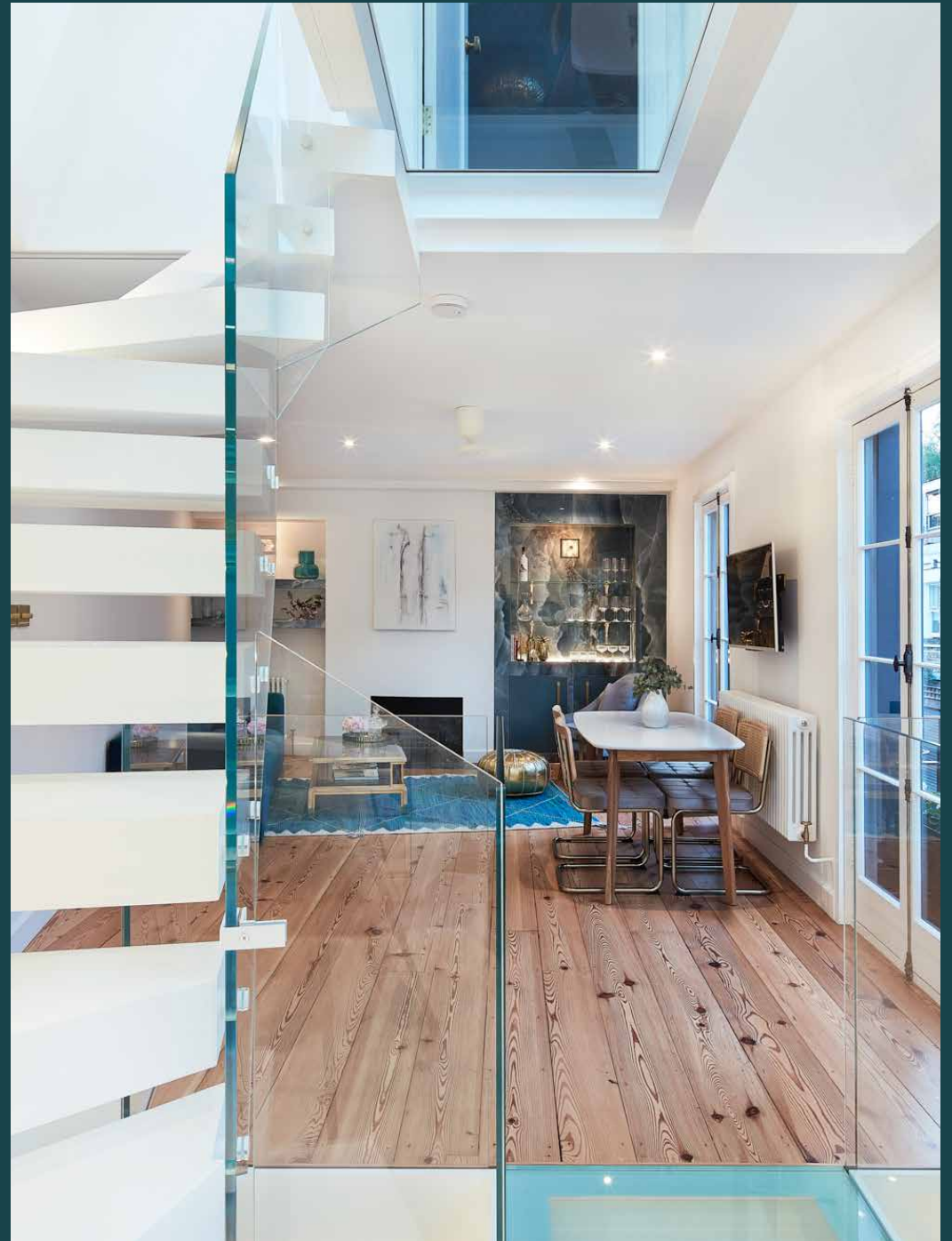


domus
stay.

Pindock Mews

Little Venice W9

2 Bedrooms, 2 Bathrooms
For 4 guests





Layers of glass channel light throughout this imaginatively reconfigured two-bedroom mews home, with a twist.

Sitting on a quintessential cobbled street, Pindock Mews radiates period charm with a daring streak. Bold black render and window lintels stand out against the traditional brickwork – and hint at the contemporary design that awaits inside.

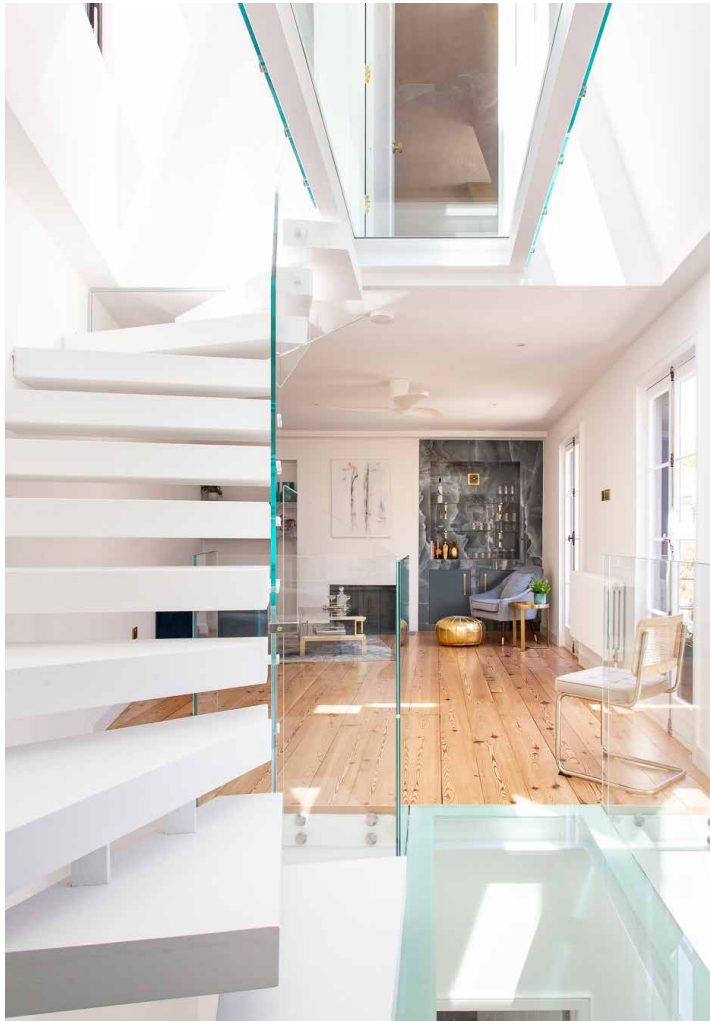
Configured to maximise the space and natural light available, bedrooms are found on the ground and second floors, with a sociable living space positioned in-between. Floating staircases with glass balustrades thread the levels together, while glass floors offer an uninterrupted view to the roof skylight above, emphasising the impressive volumes here.

On the first floor, the reception room and kitchen are joined by a glass walkway, a feat of architectural ingenuity. White walls and wooden floors create a neutral backdrop that lets this design detail do the talking. In the living area, two sets of double doors open onto Juliet-style balconies that bounce light around the space. A blue marble bar positioned in an alcove by the fireplace adds an opulent touch. Marble accents continue in the kitchen, where white veined splashbacks elevate the streamlined units, complete with integrated appliances and a considered layout.





Floating staircases with glass balustrades thread the levels together, while glass floors offer an uninterrupted view to the roof skylight above



“

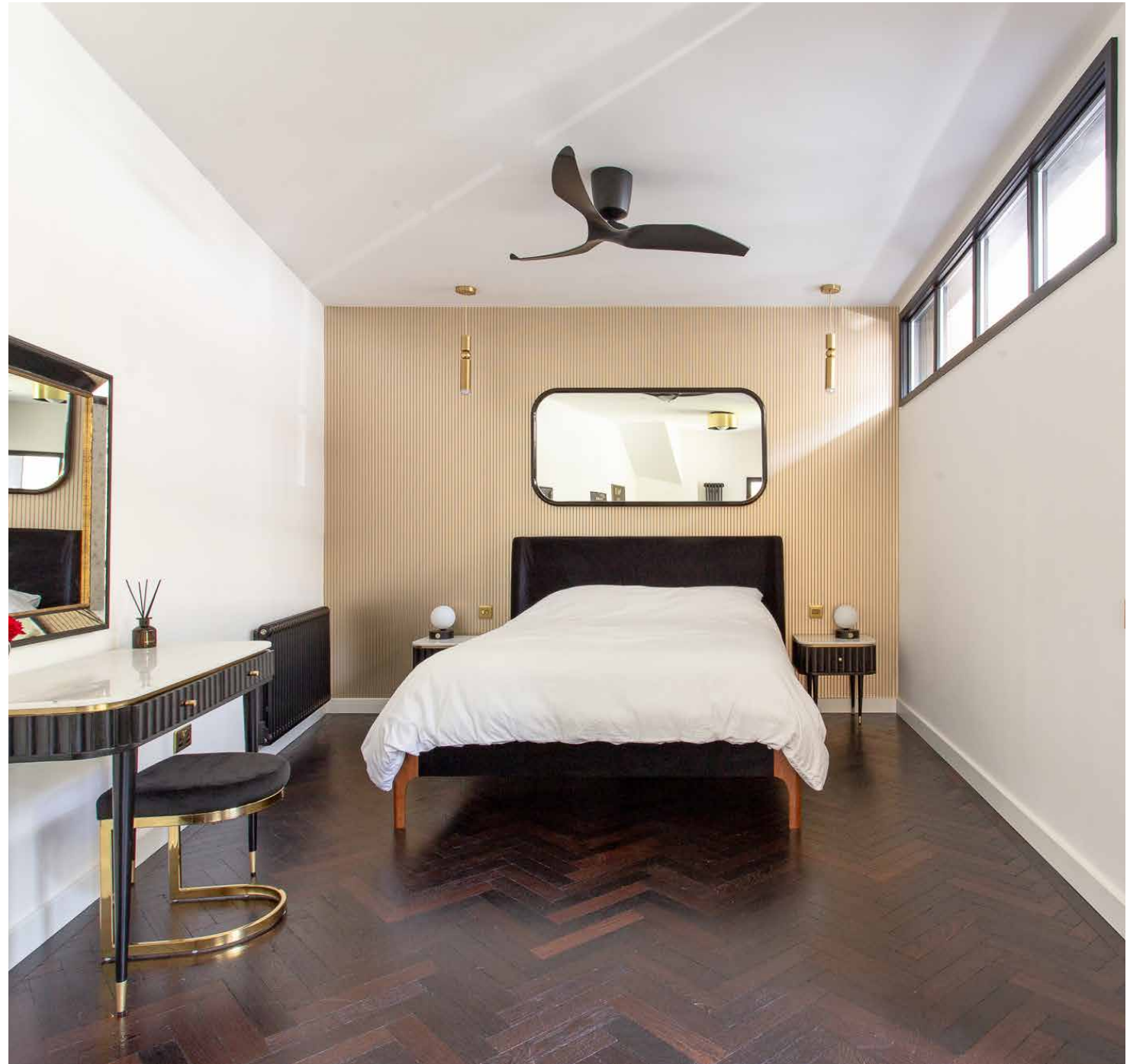
The scenic roof terrace is set up for meals or morning coffees.





Located on their own floors, both bedrooms enjoy a sense of privacy. The guest bedroom is finished in a decadent palette of blacks and burnished golds that adds an Art Deco feel. Clerestory windows diffuse the light, making the space conducive to rest and relaxation. Also on this floor, a family bathroom is wrapped in marble and features a rainfall shower over a bathtub.

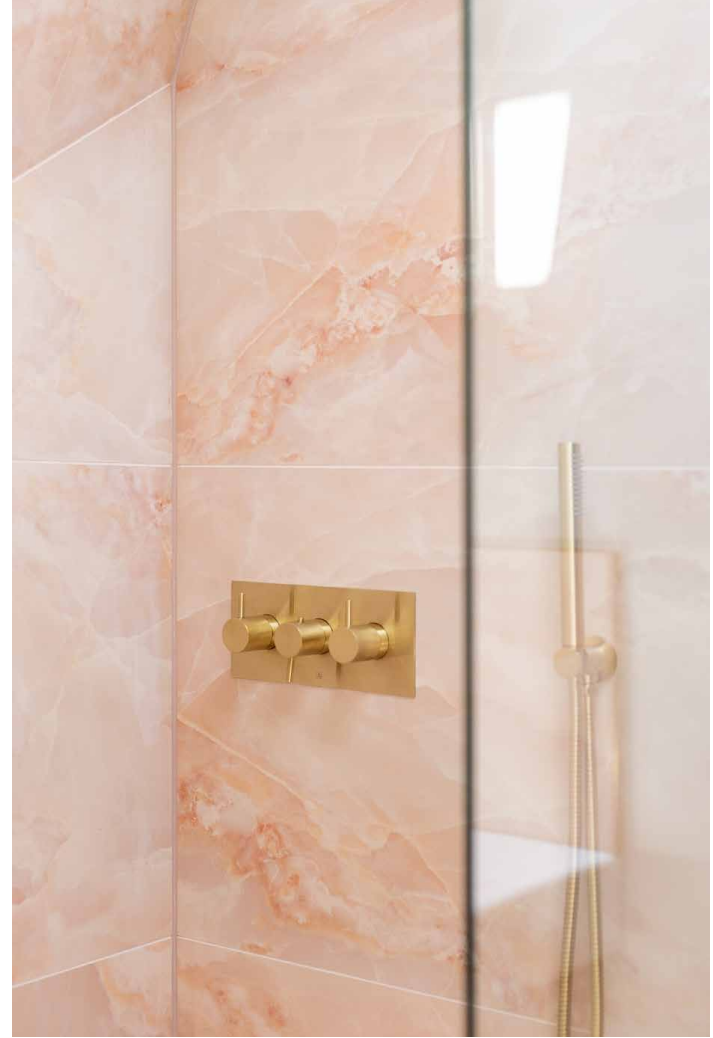
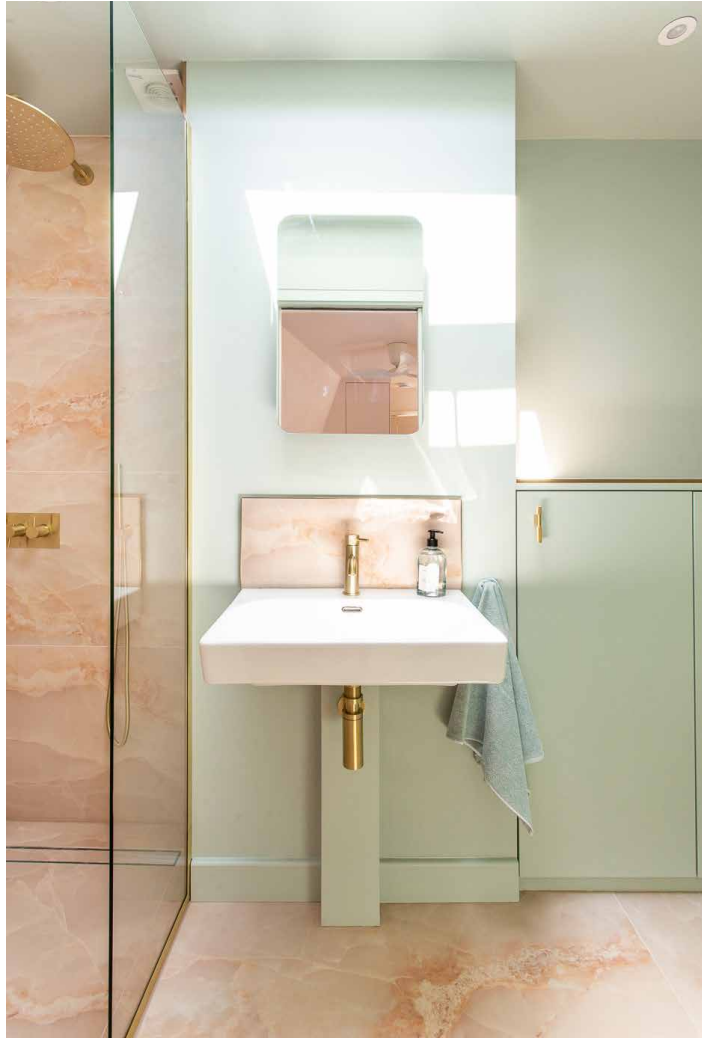
The principal suite is tucked away on the top floor. Soft, blush tones create a calming atmosphere, while integrated storage keeps the space clutter free. The pink marble en suite with walk-in shower is similarly inviting. From here, cross the glass-floored landing out to the roof terrace. A generous space featuring a table, it's an ideal spot for morning coffees.















LOCATION

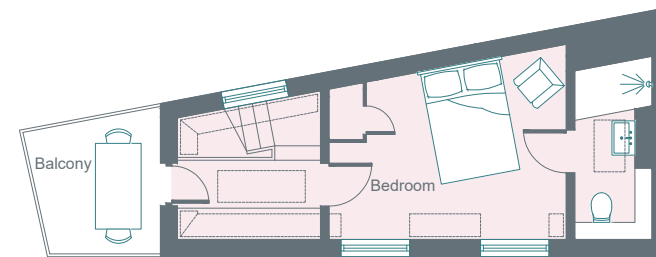
Scenic surroundings and a strong sense of community await in this tranquil corner of Little Venice.

A short stroll from the colourful barge-lined Regent's Canal, there's plenty to savour in this locally minded neighbourhood. Start the day with breakfast at The Waterway, or grab a leisurely brunch at The Summerhouse, both situated on the canal. Stop by the independent boutiques and antiques dealers of Formosa Street then spend the afternoon in picturesque Rembrandt Gardens or catch a live performance at Canal Café Theatre. Come evening, enjoy wine tasting and French cuisine at local favourite Paulette or a drink at The Prince Alfred.

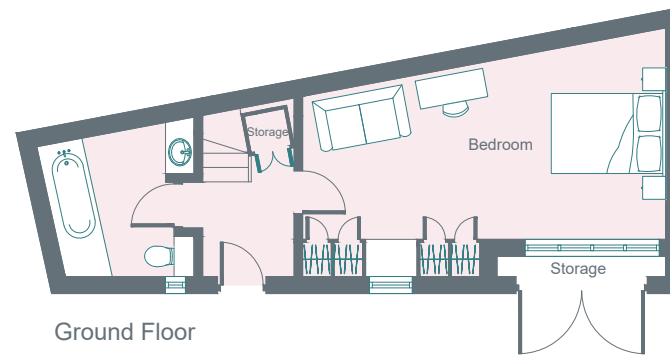


PROPERTY HIGHLIGHTS

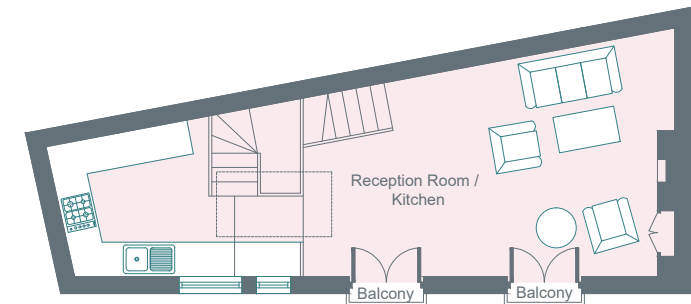
- Open-plan kitchen and reception room
- Principal bedroom suite
- Guest bedroom
- Family bathroom
- Roof terrace
- City of Westminster



Second Floor



Ground Floor



First Floor

Approximate Area = 100.8 sq m / 1085 sq ft
Storage = 1.4 sq m / 15 sq ft
Total = 102.2 sq m / 1100 sq ft
Including Limited Use Area (3.0 sq m / 32 sq ft)

Drawn for Illustration Purposes Only
fourwalls-group.com 58383





Please don't hesitate to get in touch if you have any questions or require any further information.

hello@domusstay.com

+44 (0)20 8168 8880

Domus Stay provides the perfect combination of property, place and personal service for the world's most remarkable people. If you have any questions, or if we can help in any way, please contact us on the above number. Be it about a property you have, a property you want, dates to check or any special requirements you may need, we'd love a chat.

