
Tarrant Place

Marylebone W1H

2 Bedrooms, 2 Bathrooms
For 4 guests





Calm, contemporary and considered. Nestled in a private gated mews, this two-bedroom duplex home is a serene retreat in the heart of Marylebone.

Set within an exclusive gated enclave just moments from the charming St Mary's Church, this two-bedroom duplex apartment is all refined tones and sleek interior design.

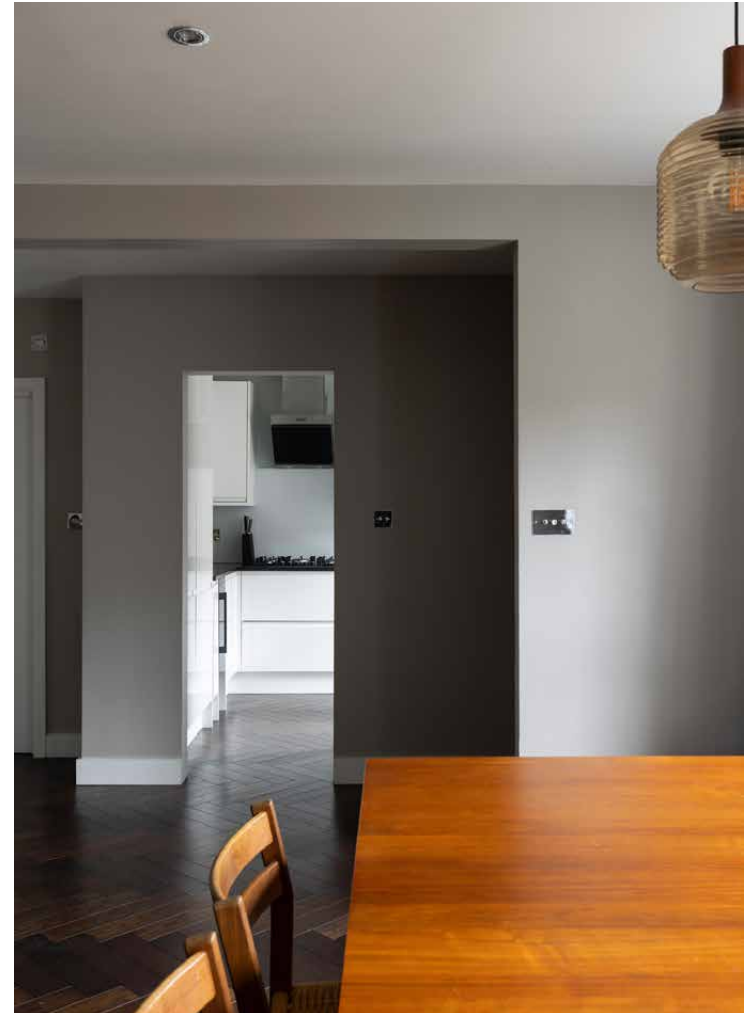
Enter from the cobbled cul-de-sac into the calming open-plan dining and reception room. A trio of glass pendant lights cast a warm glow over the dining table, complemented by the minimalist fireplace. Beyond, a luxe tuxedo sofa and lime-green armchair are poised in front of a television, perfect for cosy film nights.

The kitchen is a sleek, streamlined affair, with glossy whitewashed cabinets and integrated appliances.











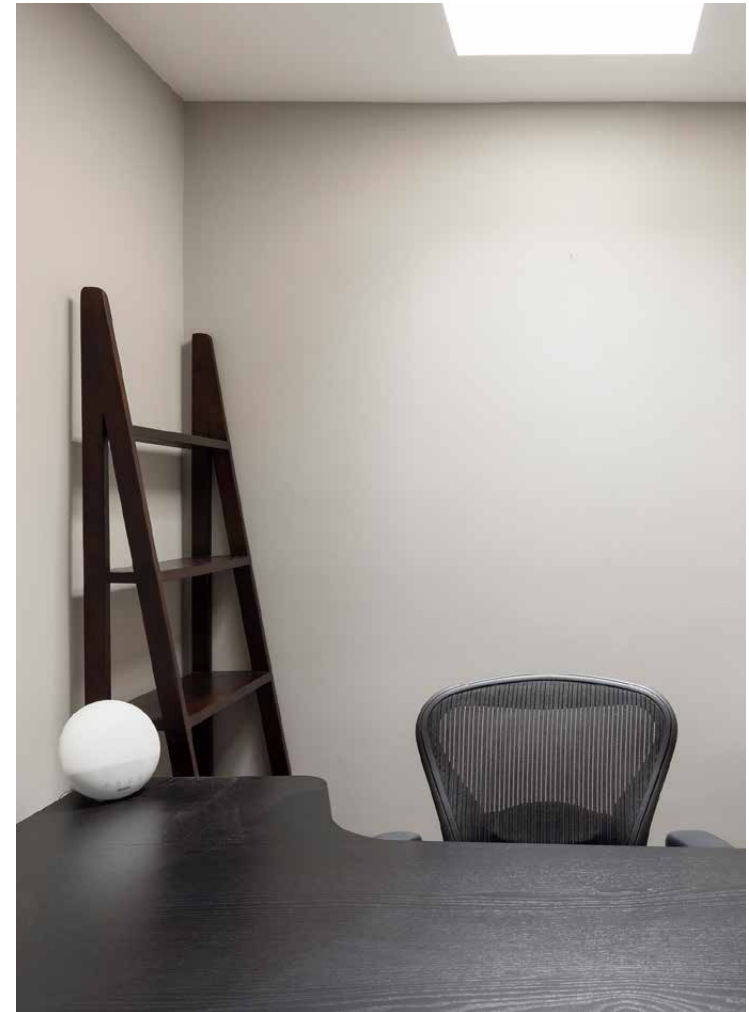
Upstairs, the bedrooms maintain a sense of tranquility with a pared-back aesthetic. The principal bedroom suite has soft grey walls and a row of integrated wardrobes – offering a neat storage solution for new-found treasures. The guest bedroom is a peaceful sanctum, filled with natural light and served by a bathroom downstairs.

Completing the first floor is a quiet study, complete with a dark wood desk and skylight – which has flexibility to be used as a bedroom.







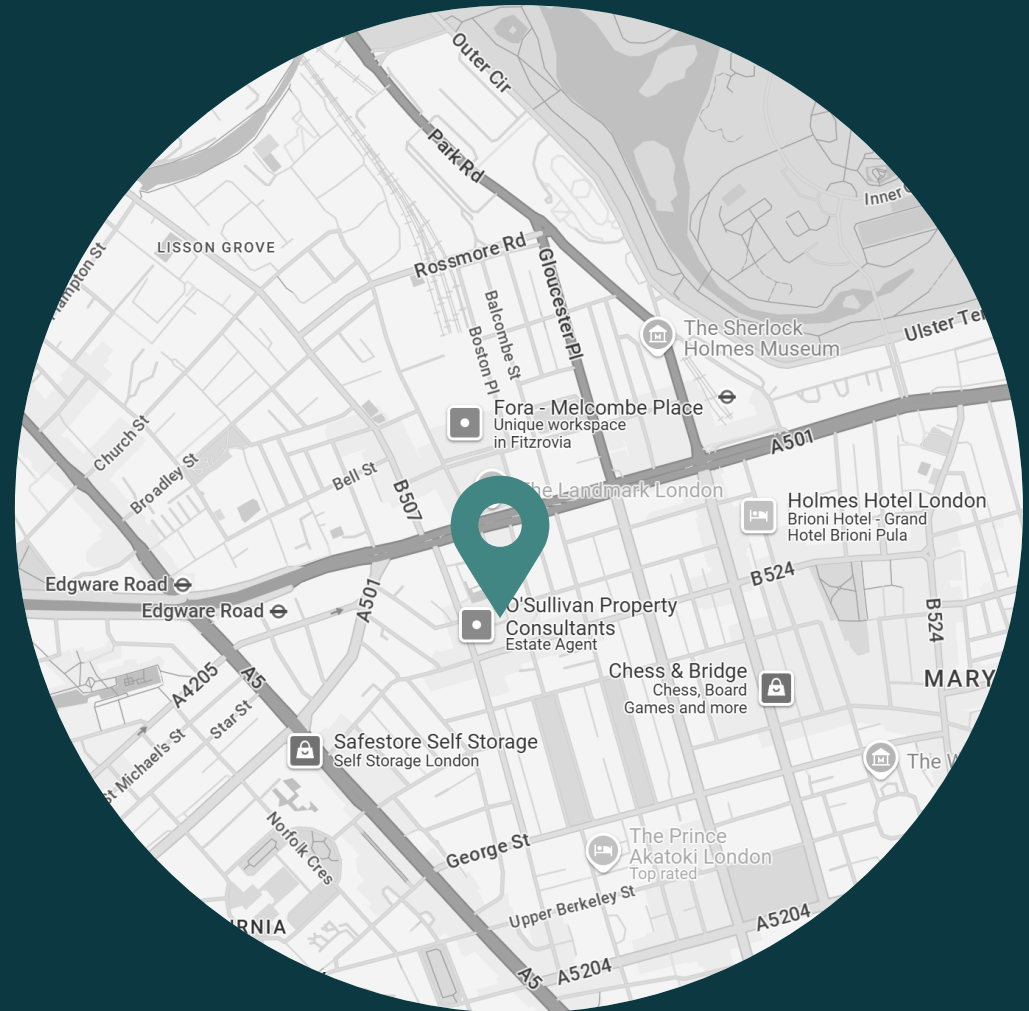




LOCATION

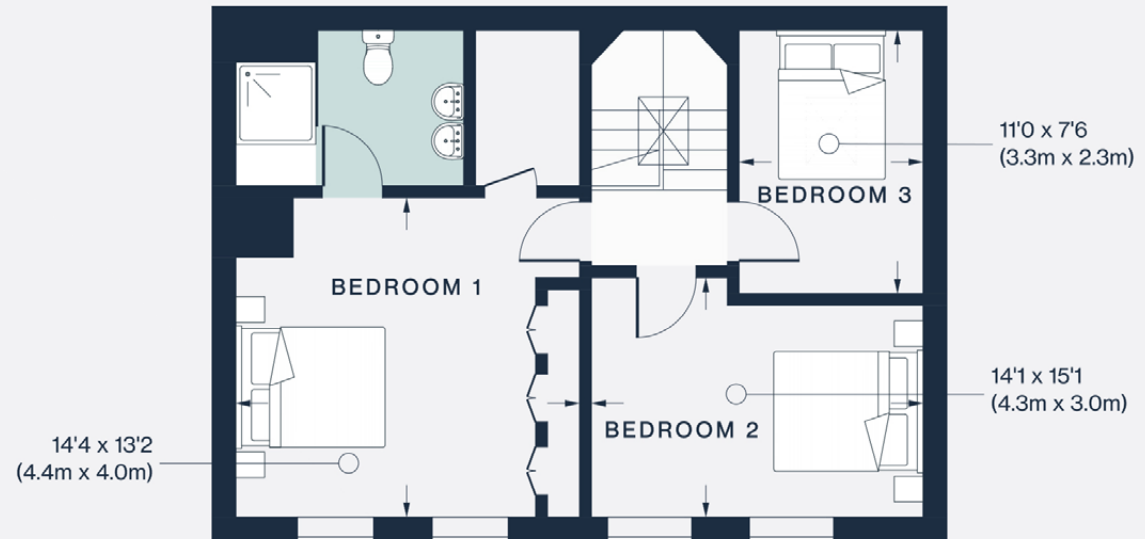
Central London with a village-like feel.

Marylebone is an enclave buzzing with independent shops and high-end eateries, tucked between the vibrant energy of Oxford Street, the refined elegance of Mayfair and the natural stretches of Regent's Park. After a day perusing the high-end boutiques of Marylebone High Street, eat well at famed dining destinations – Chiltern Firehouse, KOL and Fischers to name a few. On Sundays, stock up on local produce at the local farmer's market. During the summer, there's a fantastic programme of performances at Regent Park's Open Air Theatre, while the London Zoo is a fantastic day out year-round.

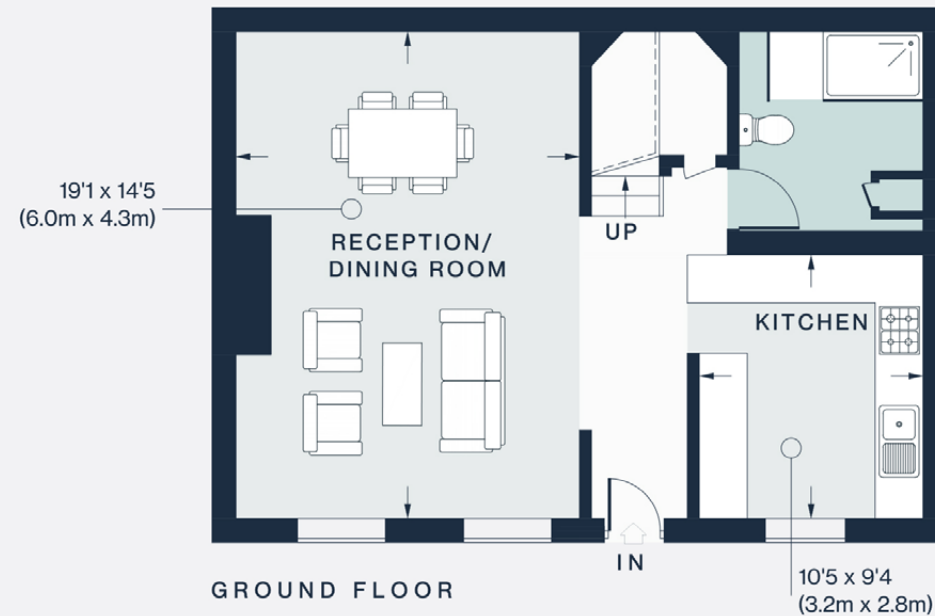


PROPERTY HIGHLIGHTS

- Contemporary duplex apartment
- Open-plan kitchen, dining and reception room
- Principal bedroom suite
- One guest bedroom
- Study / additional bedroom
- Guest bathroom



FIRST FLOOR



GROUND FLOOR

Approx. Gross Internal Area = 1,152 sq ft / 107.0 sq m

Floor plans are for illustrative purposes only and not to scale. Compliant with RICS code of measuring practice.
Prepared for Domus Stay. Copyright © All Rights Reserved.



Please don't hesitate to get in touch if you have any questions or require any further information.

hello@domusstay.com

+44 (0)20 8168 8880

Domus Stay provides the perfect combination of property, place and personal service for the world's most remarkable people. If you have any questions, or if we can help in any way, please contact us on the above number. Be it about a property you have, a property you want, dates to check or any special requirements you may need, we'd love a chat.

