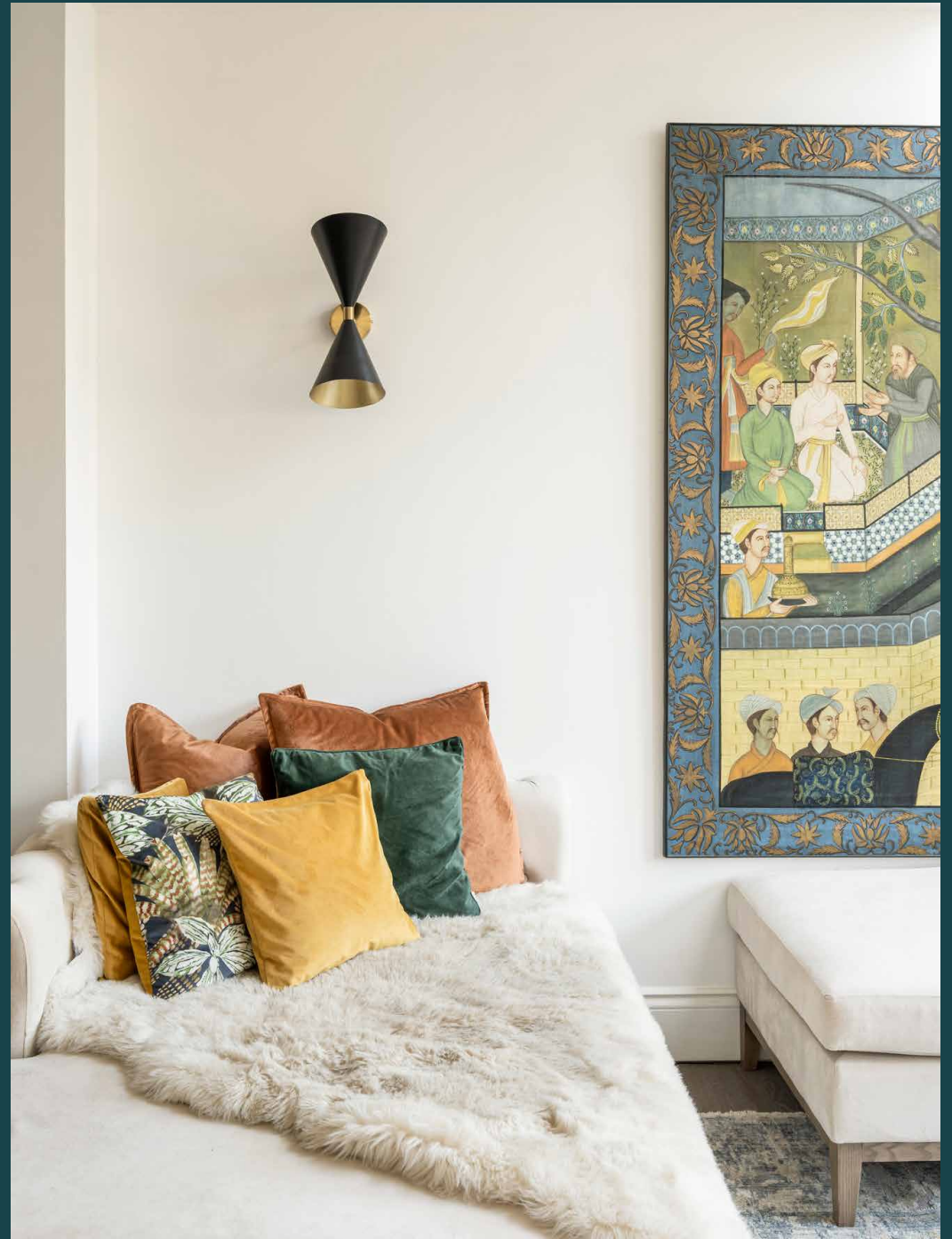

Campden Hill Road

Notting Hill W8

2 Bedrooms, 2 Bathrooms
For 4 guests





Behind a monochromatic façade, this stylish townhouse is a quiet enclave a stone's throw from Notting Hill.

Worldly and warming, contemporary interior design ties myriad spaces together over Campden Hill Court's four spacious floors.

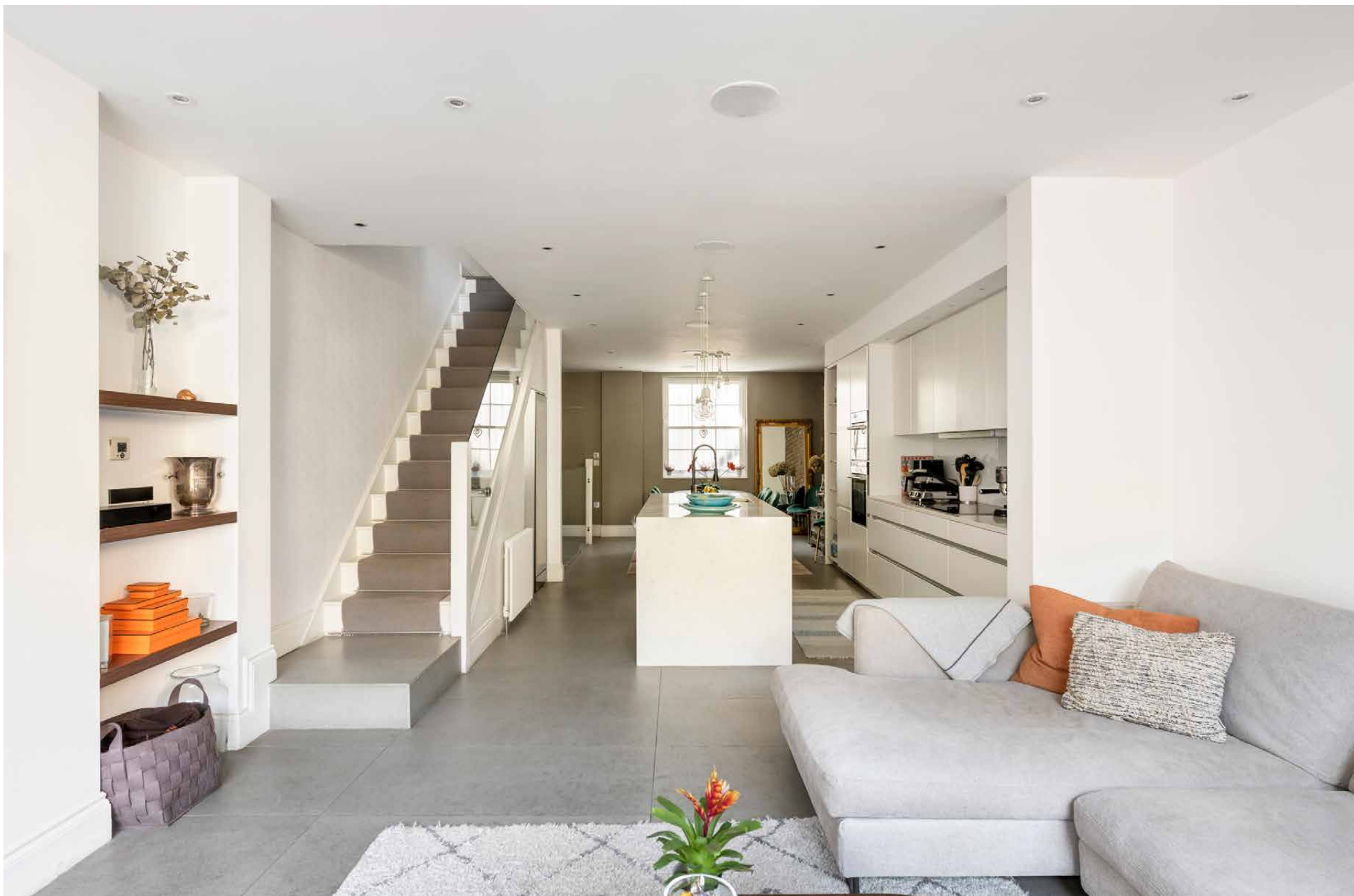
An amalgamation of natural light and neutral tones – expect inviting settings with seamless connectivity to the outside.

The lower ground floor hosts the home's primary social hub: a serene and spacious open-plan living area. Washed in white tones, the kitchen forms a sophisticated culinary set up. Utilise the double oven and integrated appliances before settling in at the breakfast bar or dining table.

Tiled floors flow back through the minimalist living area, where four Crittall doors lead out onto a leafy patio garden. A secluded, wood-lined space, it's perfect for casual dining or lounging in London's warmer months.

Upstairs, the eclectic secondary reception room is quirky and characterful with gilded light fittings and statement art pieces. Light floods the room through a generous skylight and floor-to-ceiling doors – leave them open to embrace the inside-outside effect. Head downstairs to work out in the gym – simultaneously serving as an additional bedroom when required – or switch off in the sauna. Cool off under the rain shower in the family bathroom.



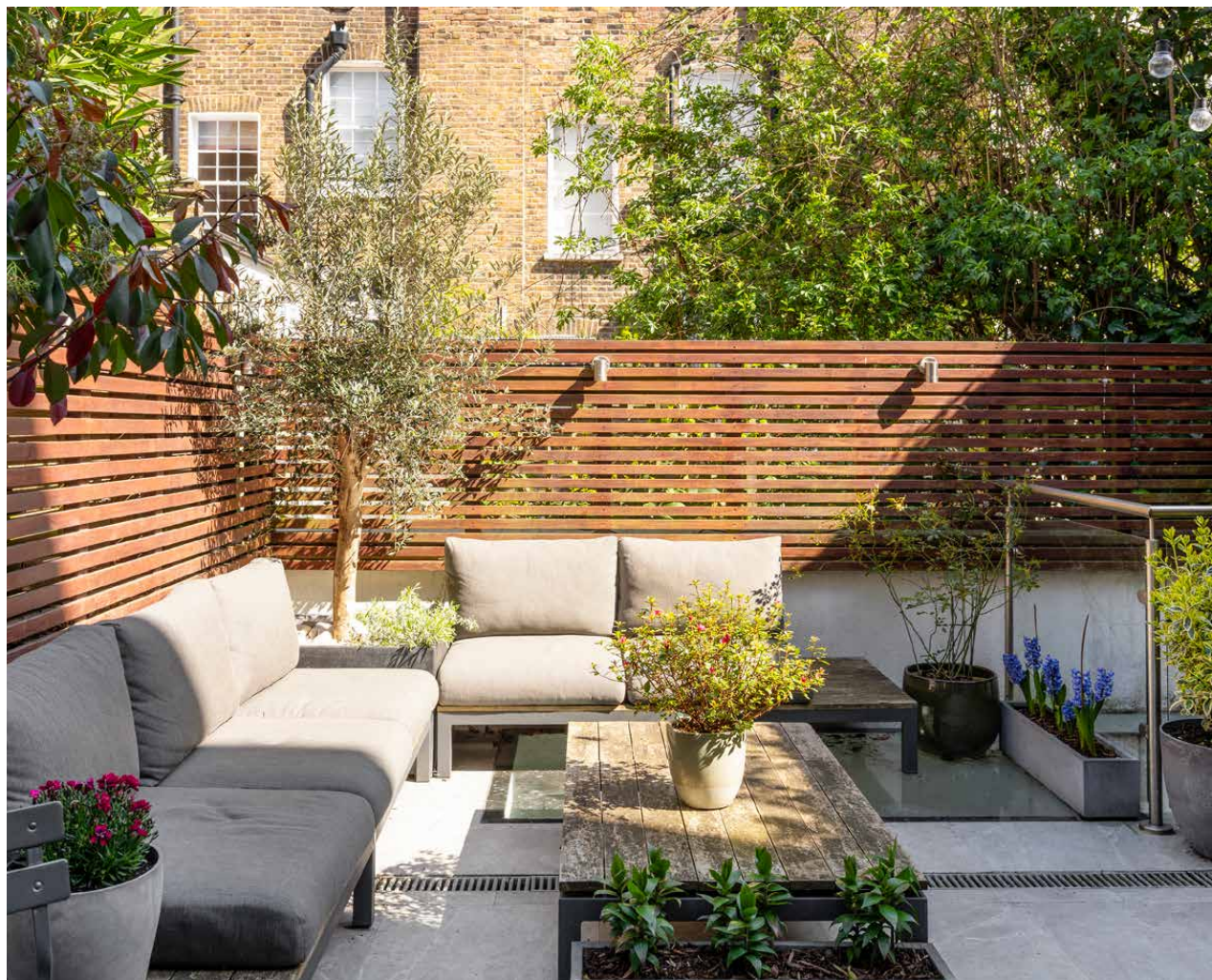


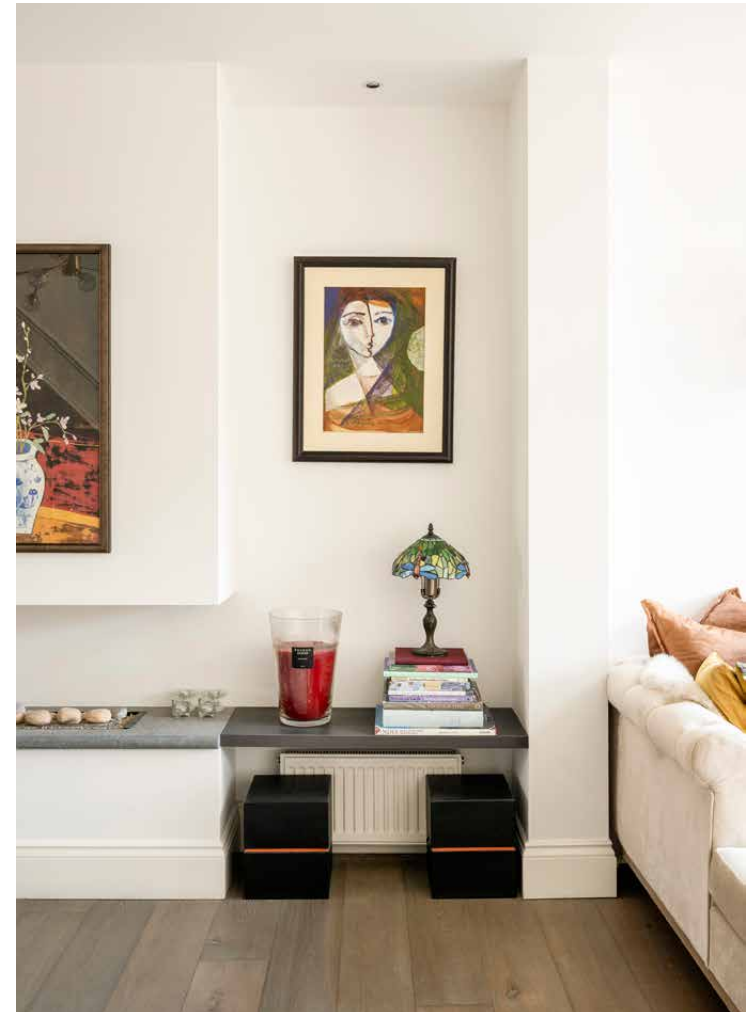
Tiled floors flow back through the minimalist living area, where four Crittall doors lead out onto a leafy patio garden.



“

The patio garden is a perfect spot for entertaining or casual alfresco dining.





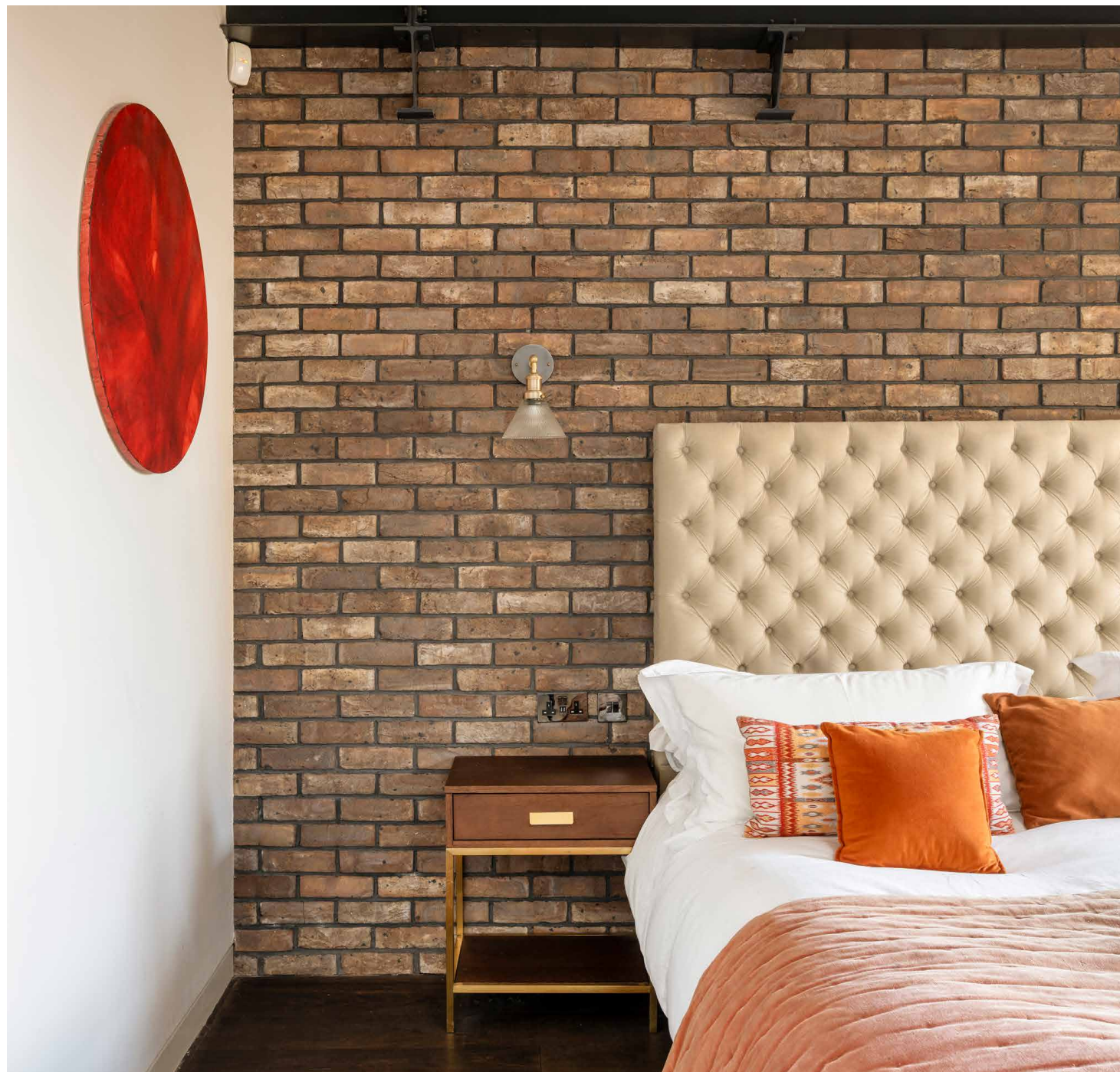


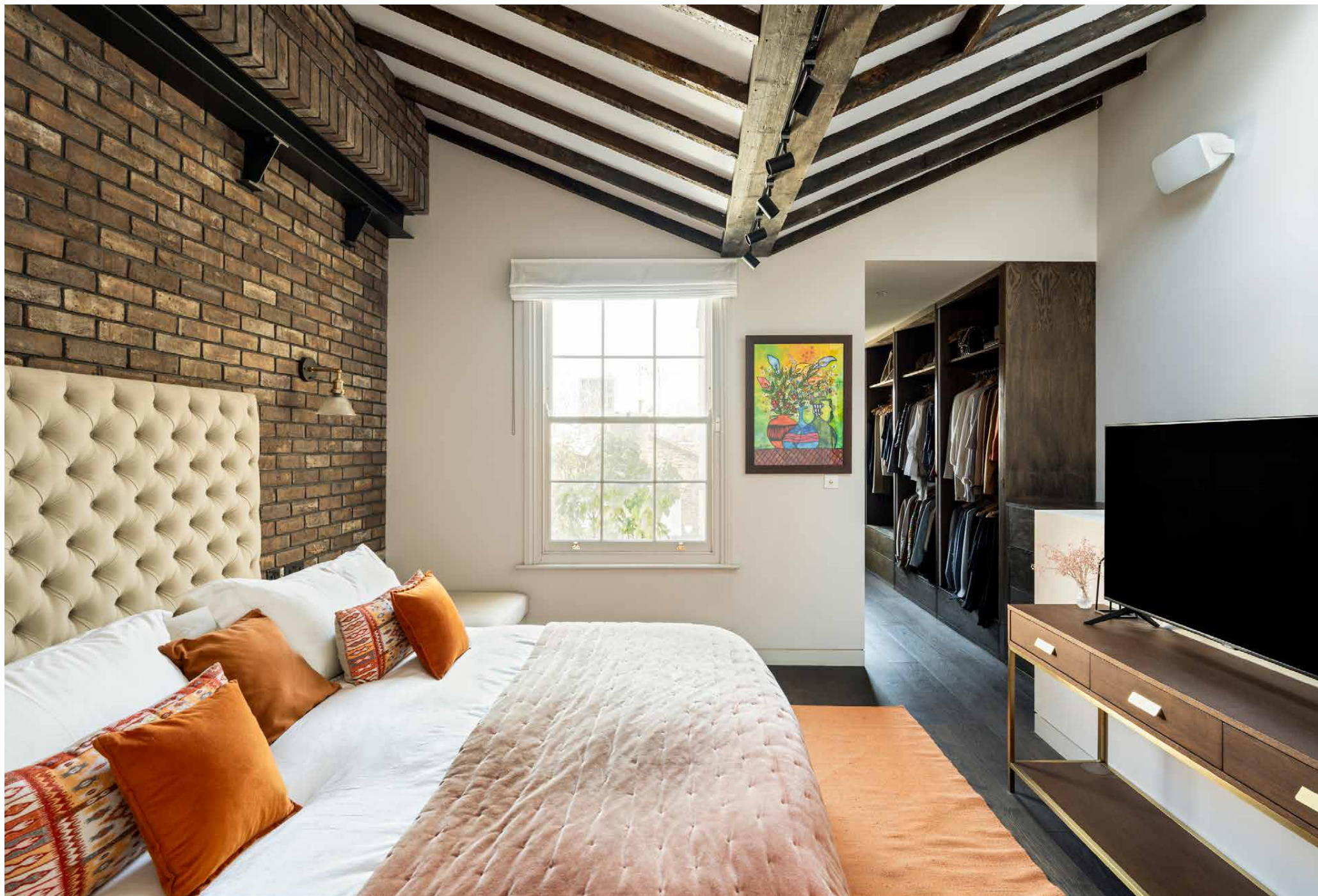






Vaulted ceilings and exposed beams create a voluminous feel to the principal bedroom, conveniently cooled in warmer months by built-in AC. Stash newfound treasures from Portobello Road in the walk-in wardrobe then collapse into plush bedding. A serene en suite bathroom features a walk-in rain shower and a freestanding bath, plus a twin vanity crafted with marble. A guest bedroom in the basement level is bright and serene, with thoughtful design and glass doors leading to a light-well courtyard.

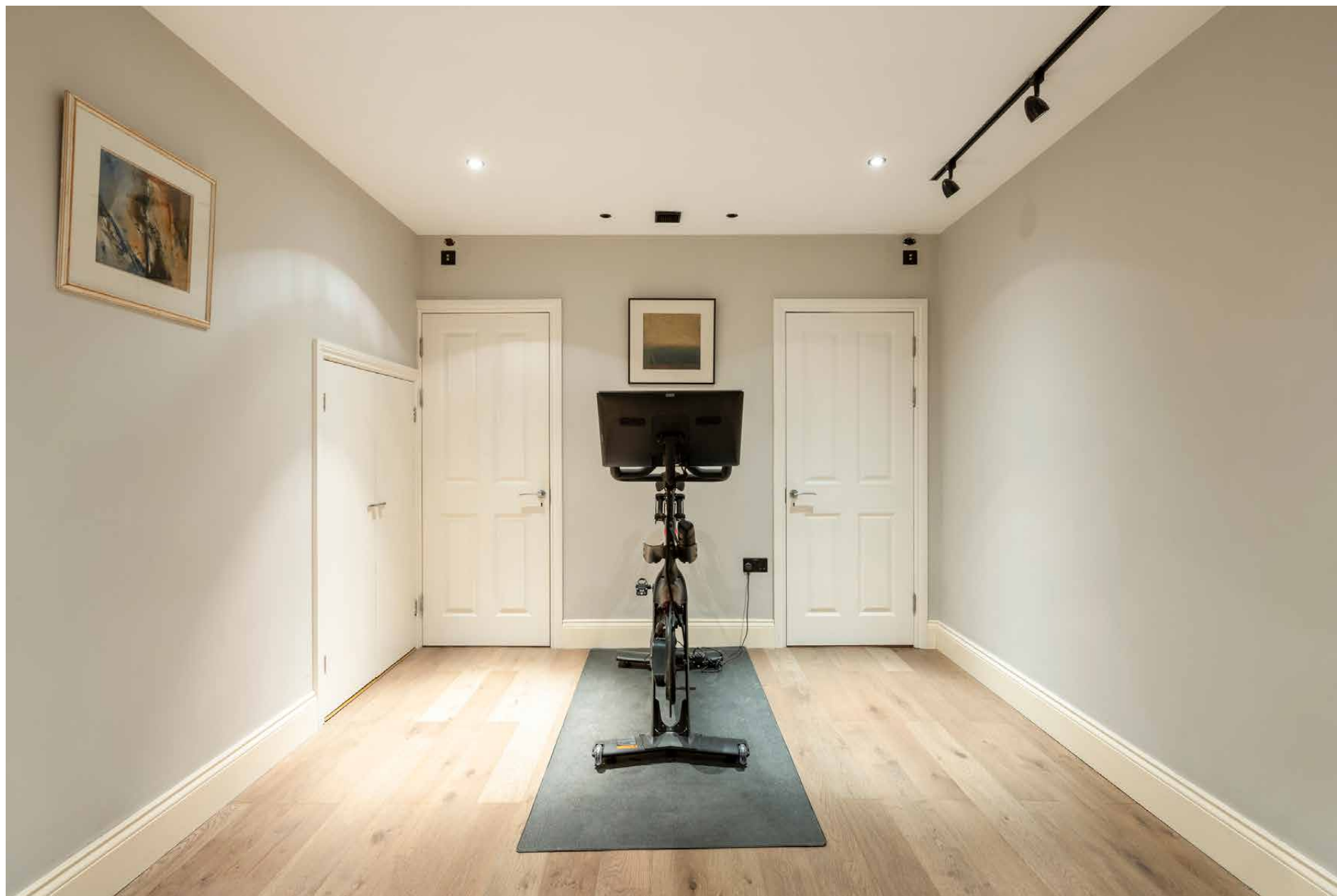












LOCATION

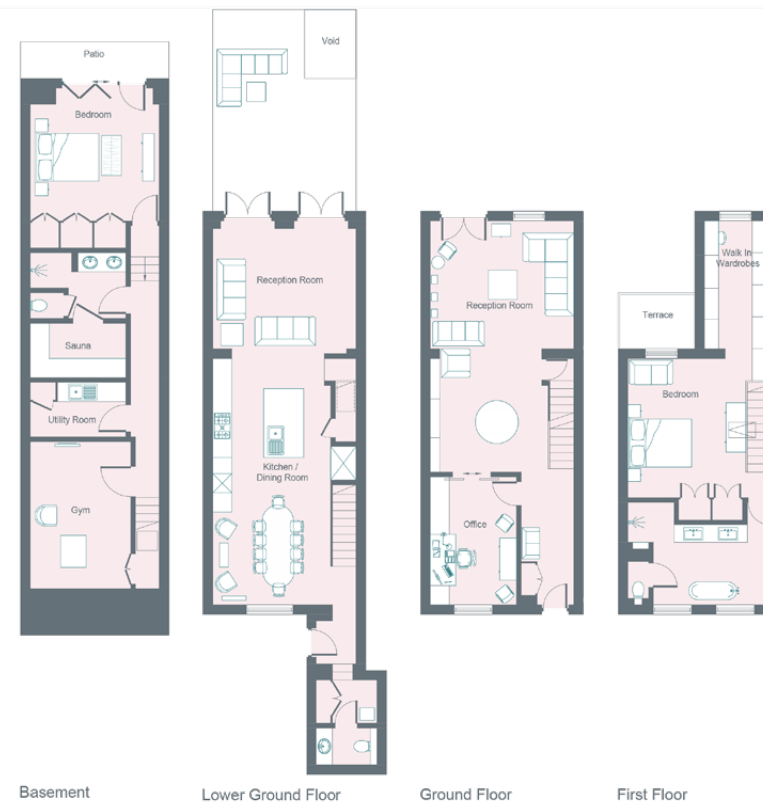
Moments from Notting Hill Gate, Campden Hill Road has a quiet, suburban feel while being close to some of west London's best shops and restaurants.

Brunch at Sunday in Brooklyn, peruse the boutiques and antiques of Portobello Market then dine at Gold. Or book ahead and experience the gastronomical institution that is The Ledbury. For summertime strolls, Hyde Park is 10 minutes away. Alternatively, hop on the tube at Notting Hill Gate to explore central London and beyond.



PROPERTY HIGHLIGHTS

- Open-plan kitchen, dining and reception room
- Additional reception room with Juliet balcony
- Principal bedroom suite with walk-in wardrobe
- One further bedroom
- Gym and sauna
- Study
- Patio garden
- Light well courtyard
- Family bathroom
- Royal Borough of Kensington & Chelsea



Approximate Area = 160.3 sq m / 1725 sq ft
 Basement = 68.3 sq m / 735 sq ft
 Total = 228.6 sq m / 2460 sq ft

Surveyed and drawn in accordance with the International Property Measurement Standards (IPMS 2: Residential)
 fourwalls-group.com 895302





Please don't hesitate to get in touch if you have any questions or require any further information.

hello@domusstay.com

+44 (0)20 8168 8880

Domus Stay provides the perfect combination of property, place and personal service for the world's most remarkable people. If you have any questions, or if we can help in any way, please contact us on the above number. Be it about a property you have, a property you want, dates to check or any special requirements you may need, we'd love a chat.

