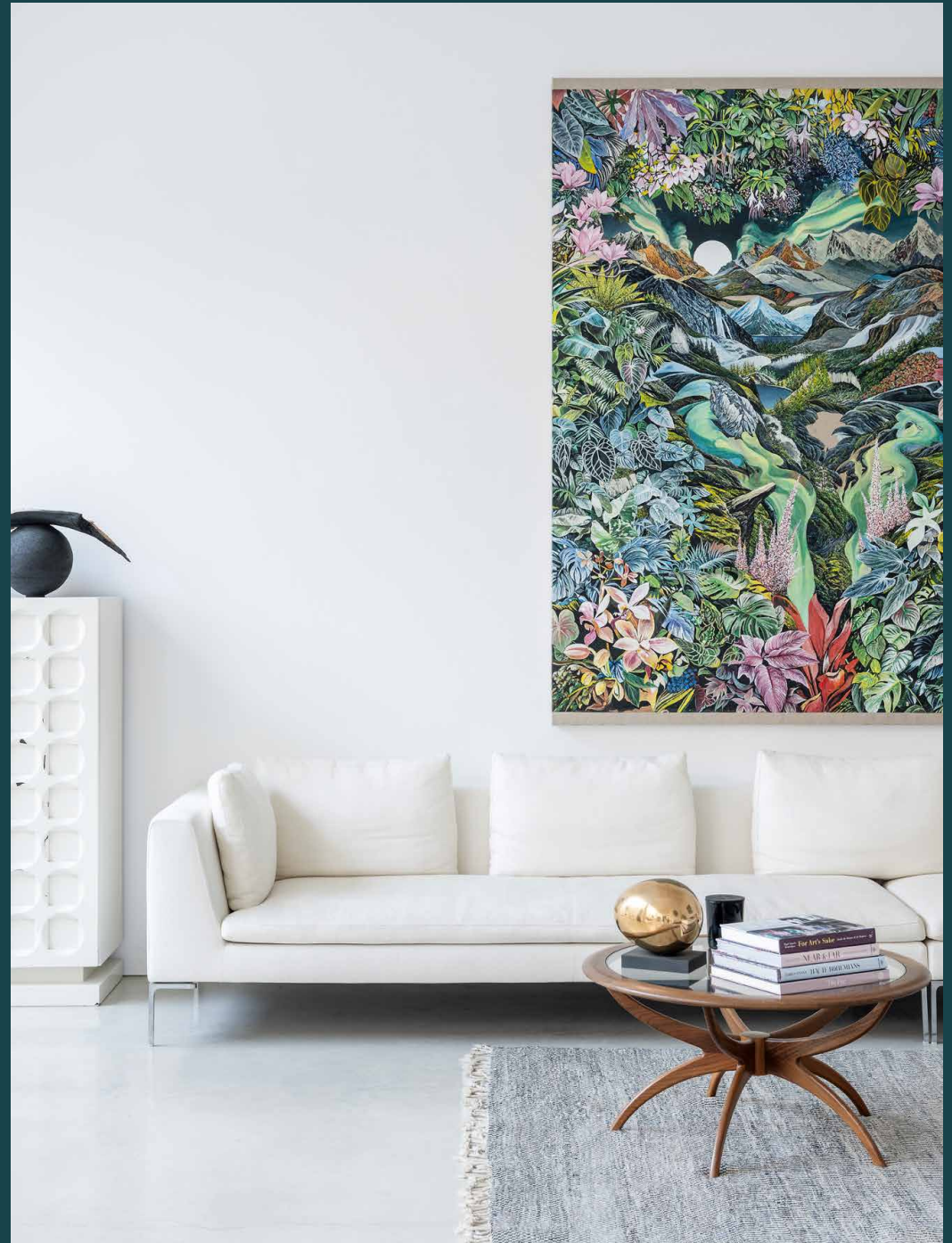




Broughton Road

Chelsea SW6

4 Bedrooms, 4 Bathrooms
For 9 guests





A landmark building transformed; this cleverly designed home takes city living to another level.

Set within the historic Loud & Western Laundry, a commercial laundry house that formerly served Fulham, this home's impressive façade is a patchwork of vibrant tiles. Inside, palatial industrial bones are reimagined with a modern eye.

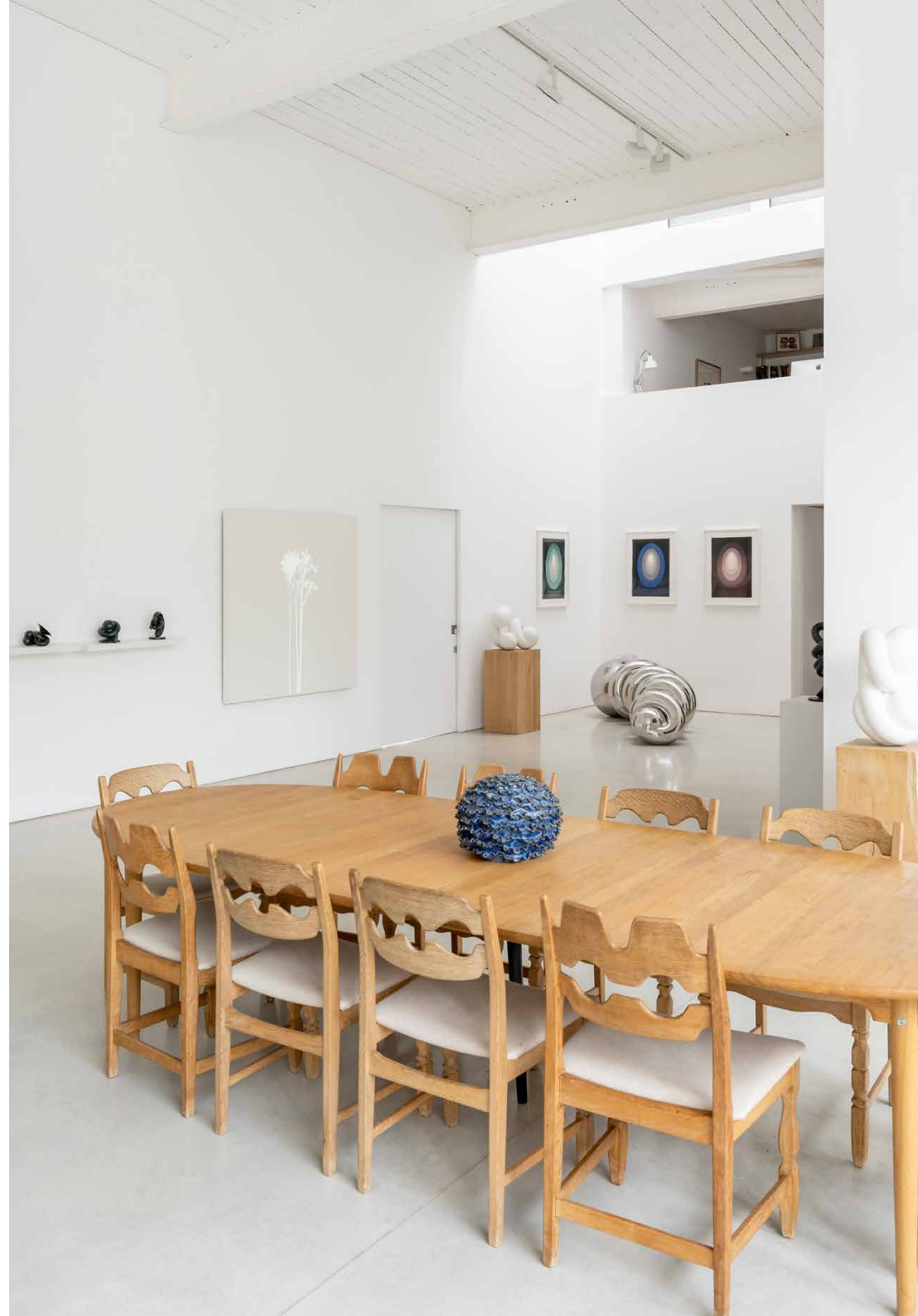
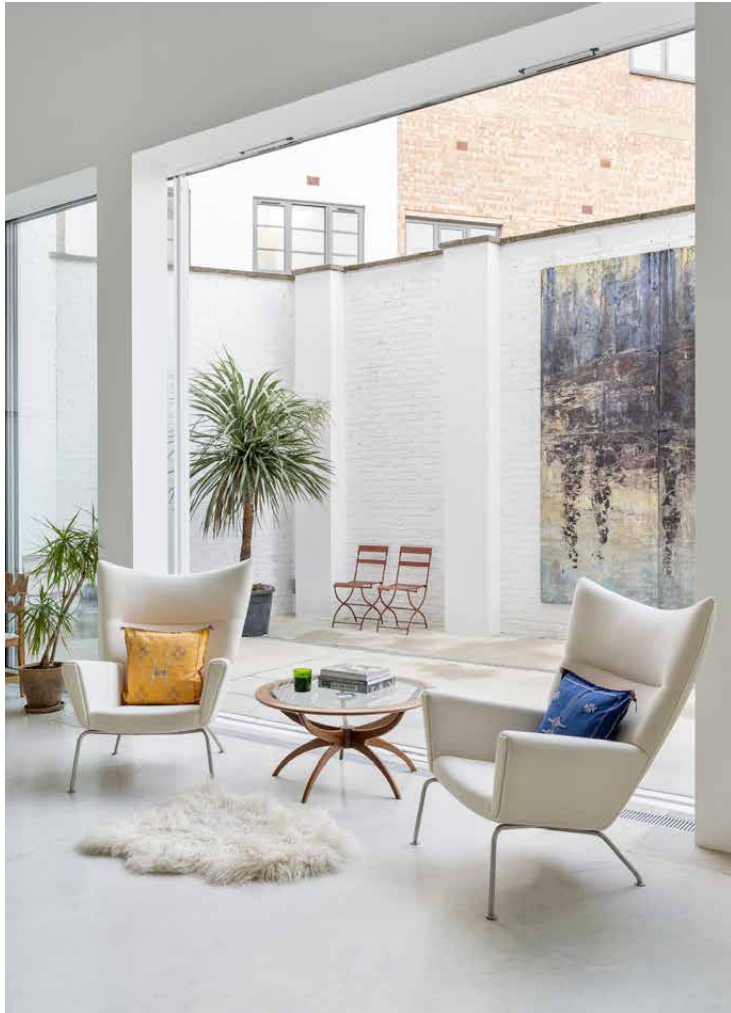
Past a brick-clad entrance, smooth concrete floors unify an impressive social setting. A partition wall establishes two distinct zones – one is centred around a grand ten-seat table, the other set up for evenings in on the plush cream sofas. When conversation wanes, inspiration comes in the form of striking sculptures and eye-catching artwork. Tall panes of glass lead to the enclosed patio garden: a welcoming extension of the interior in warmer months.

Set apart, a minimalist kitchen caters for any eventuality. Multiple chefs can make use of stainless-steel countertops and a large wooden island; onlookers can observe from the breakfast table. Elsewhere, an additional living room affords space to spread out. Draw back bi-folding doors to the roof terrace – a decked area with an away-from-it-all feel.









Smooth concrete floors and towering white walls provide a gallery-like backdrop for vibrant artwork and mirrored steel sculptures.

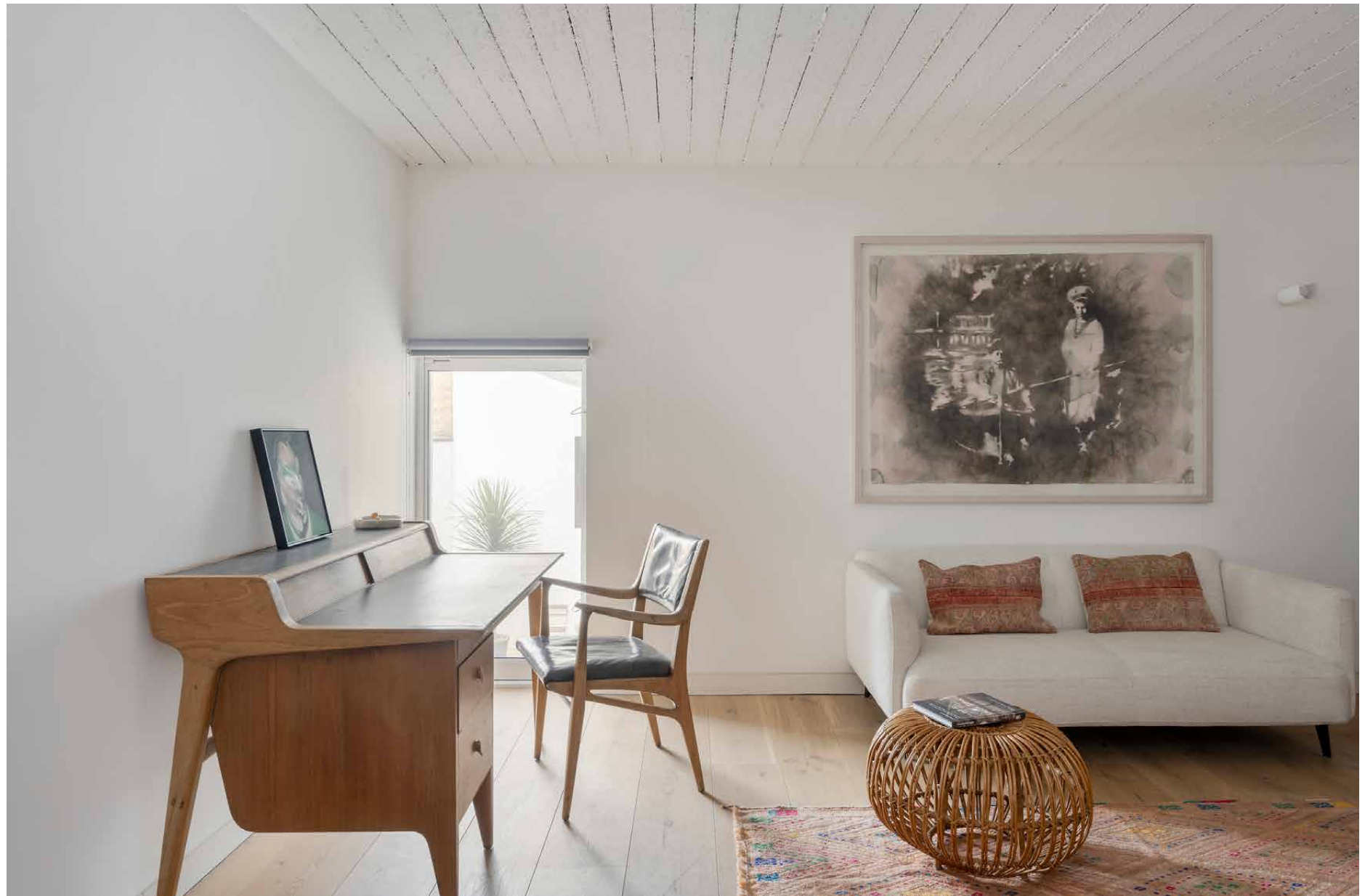


“

When conversation wanes, inspiration comes in the form of striking sculptures and eye-catching artwork.







Spread across the home's three floors, four bedrooms are bright in design. A vaulted ceiling draws light through the spacious principal suite, all tactile textures and pared-back tones. Its en suite bathroom is similarly soothing, kitted out with a freestanding tub, rainfall shower and dual vanity.

Wooden floors sweep through three further bedrooms, each similarly stylish and served by shower rooms.





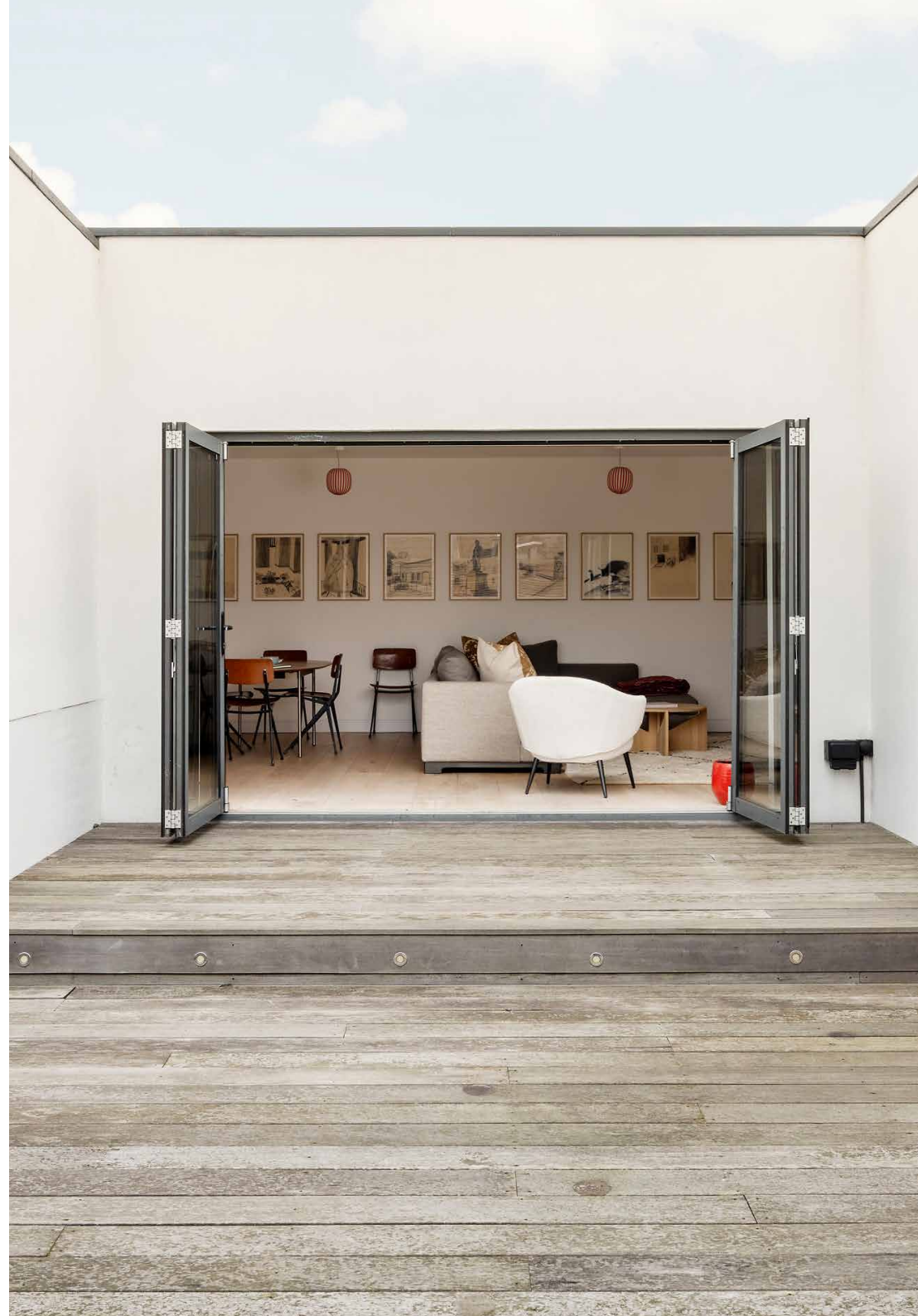
















LOCATION

Moments from the river and surrounded by green spaces, Broughton Road offers peace - and proximity to the city.

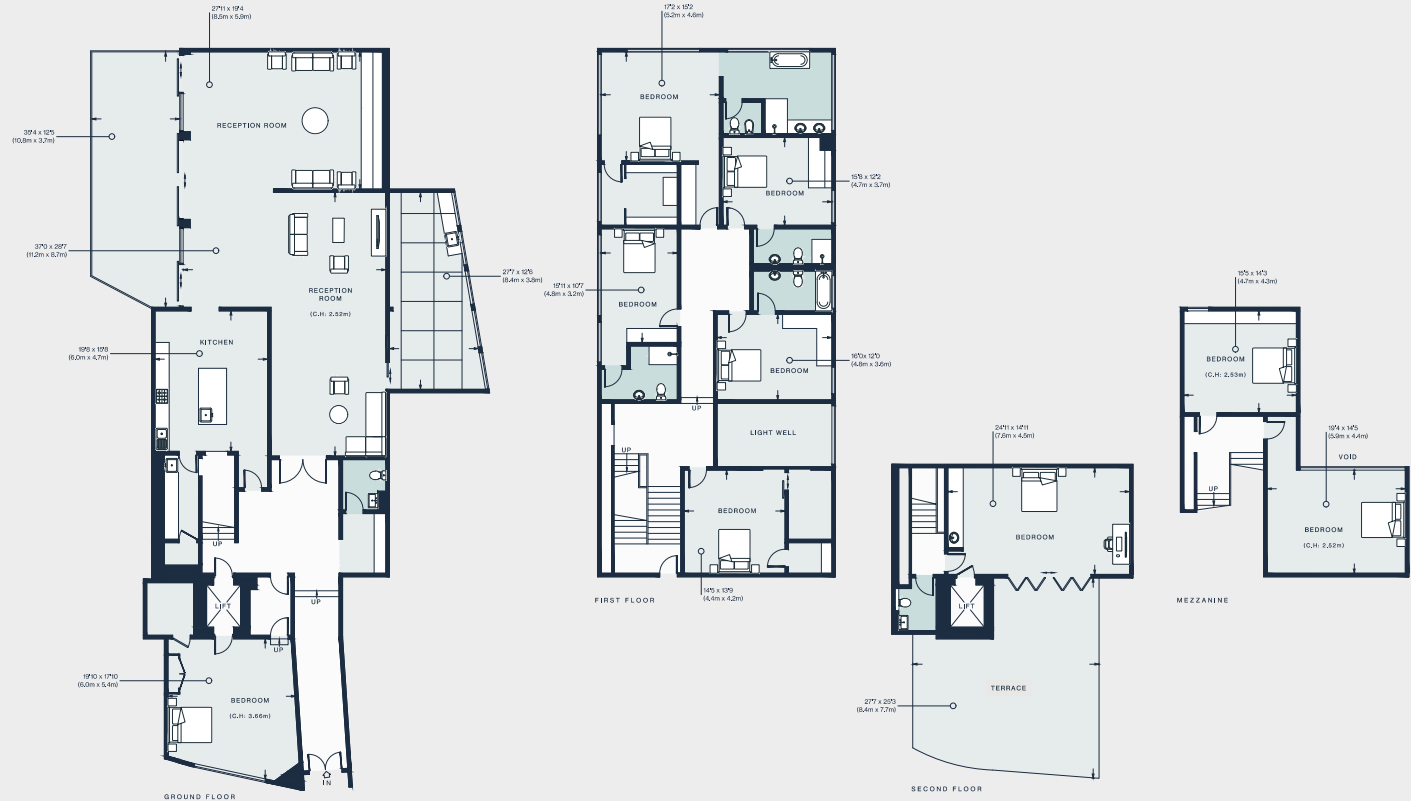
Take your pick of leafy green spaces to explore, from Imperial Park to Parsons Green and Eel Brook Common, or enjoy a game of tennis at the Hurlingham Club or Harbour Club. For creative inspiration, check out the showrooms at The Design Centre at Chelsea Harbour and refuel with pastries from French deli Chanteroy or brunch at Hally's. Make The Sand's End pub your local and be home in five.





PROPERTY HIGHLIGHTS

- Large open-plan dining and reception room
- Spacious contemporary kitchen
- Additional open-plan living space
- Principal bedroom suite
- Guest bedroom suite
- Two further bedrooms
- Patio garden
- Roof terrace
- Family bathroom
- Shower room
- Office



Approx. Gross Internal Area = 6,611 sq ft / 614.2 sq m

Floor plans are for illustrative purposes only and not to scale. Compliant with RICS code of measuring practice.



Please don't hesitate to get in touch if you have any questions or require any further information.

hello@domusstay.com

+44 (0)20 8168 8880

Domus Stay provides the perfect combination of property, place and personal service for the world's most remarkable people. If you have any questions, or if we can help in any way, please contact us on the above number. Be it about a property you have, a property you want, dates to check or any special requirements you may need, we'd love a chat.

