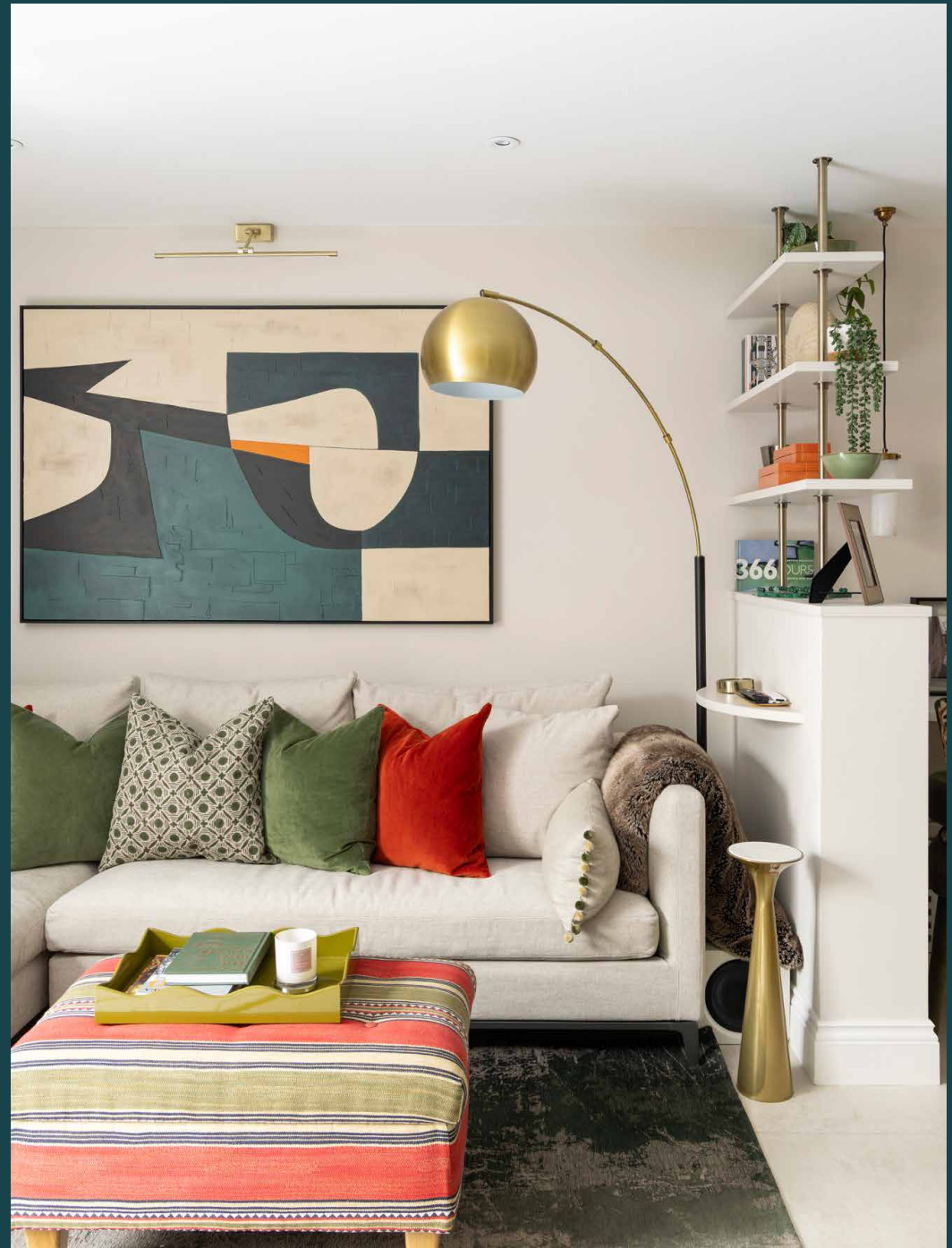
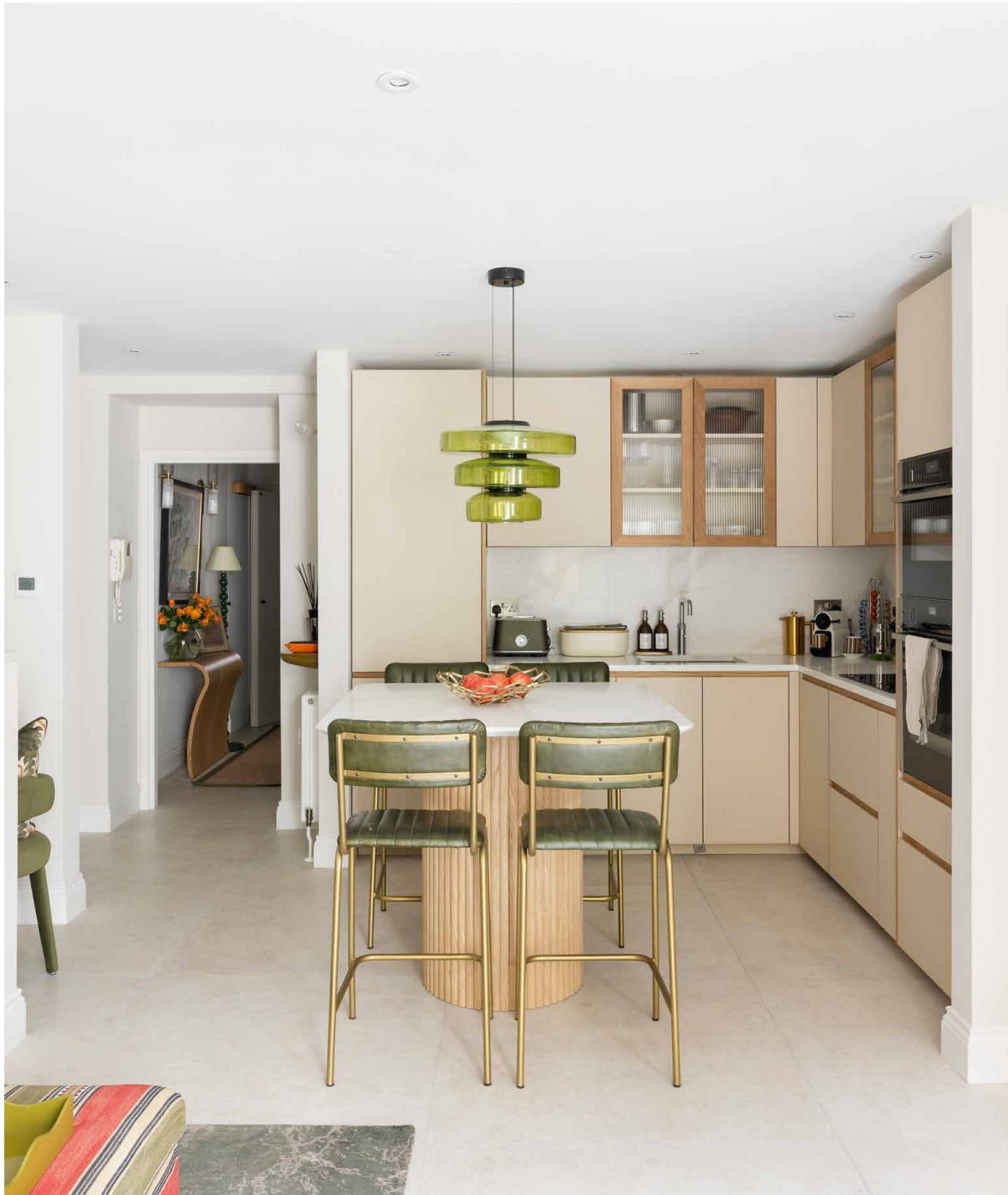


## Culford Gardens II

Chelsea SW3

2 Bedrooms, 2 Bathrooms  
For 4 guests





Composed and charismatic, this Chelsea apartment is rich in texture, wrapped in colour and designed with an artist's eye.

Some spaces whisper style, Culford Gardens hums with it. Arranged across the lower ground floor of a grand red-brick mansion block just off Sloane Square, this Chelsea retreat has been reimagined by designer Alex Meachen with an instinct for texture, tone and balance.

The open-plan living space is the home's heart – a quiet composition of natural woods, warm earthy tones and playful detail. To one side, a Holte Studio kitchen runs along the wall with tactile oak cabinetry and softly veined quartz surfaces. The island is as functional as it is sculptural – a breakfast perch in the morning, a prep space come dinner. Everything is streamlined, from the double oven to the integrated hob and extractor, so nothing interrupts the flow.

Beyond, the lounge area leans into comfort and colour – think deep green accents, abstract artwork and layered lighting. Built-in shelving houses books and curiosities, while a bespoke home bar invites evenings in. Doors here open onto a patio garden – paved, private and lit with Pooky lighting, it's an idyllic setting for slow evenings or spontaneous gatherings.



Curated by Alex Meachen, interiors here are rich in texture and tonal harmony, with bursts of colour that lend a playful feel.



“

Softly lit by Pooky lighting, the private patio feels tailor-made for long alfresco lunches and summertime entertaining.







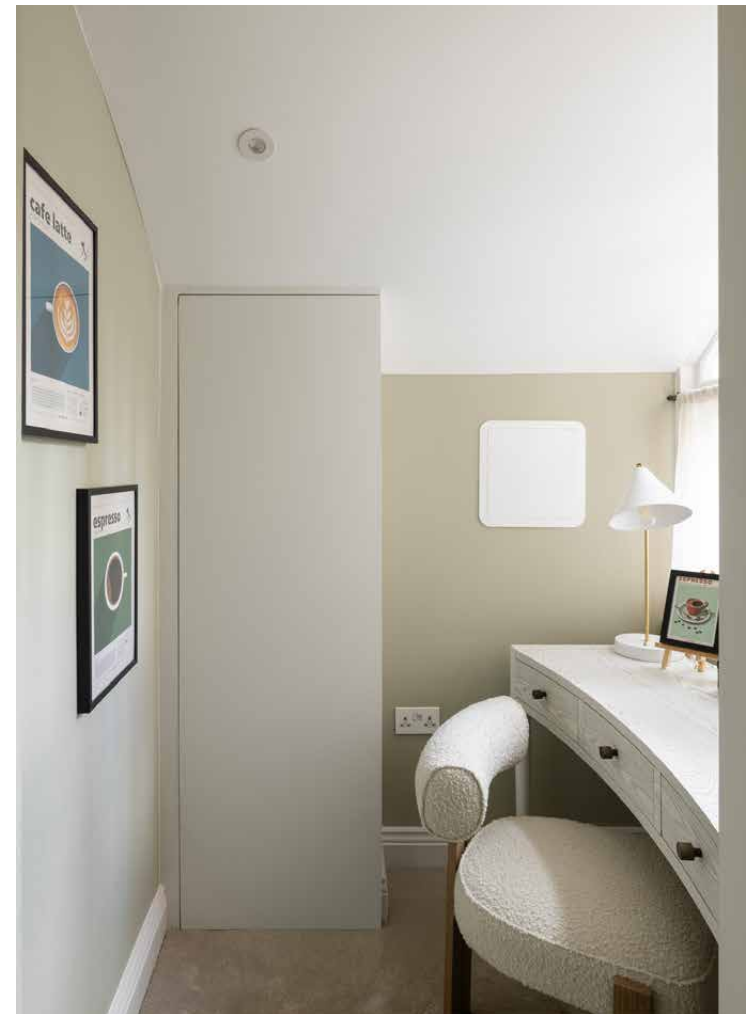
Elsewhere, the principal bedroom layers pastels and terracottas with soft light, custom joinery and a graphic headboard that lends a lively character. Built-in and under-bed storage speaks to form and function, while the en suite bathroom embodies a sophisticated feel – a walk-in rainfall shower, double vanity and mirror-fronted storage. The guest bedroom is equally convivial, with a tucked-away nook perfect for getting ready or working from home. In the adjacent bathroom: blush pinks, jade green onyx and brushed brass soften the edges of a bathtub and overhead shower.

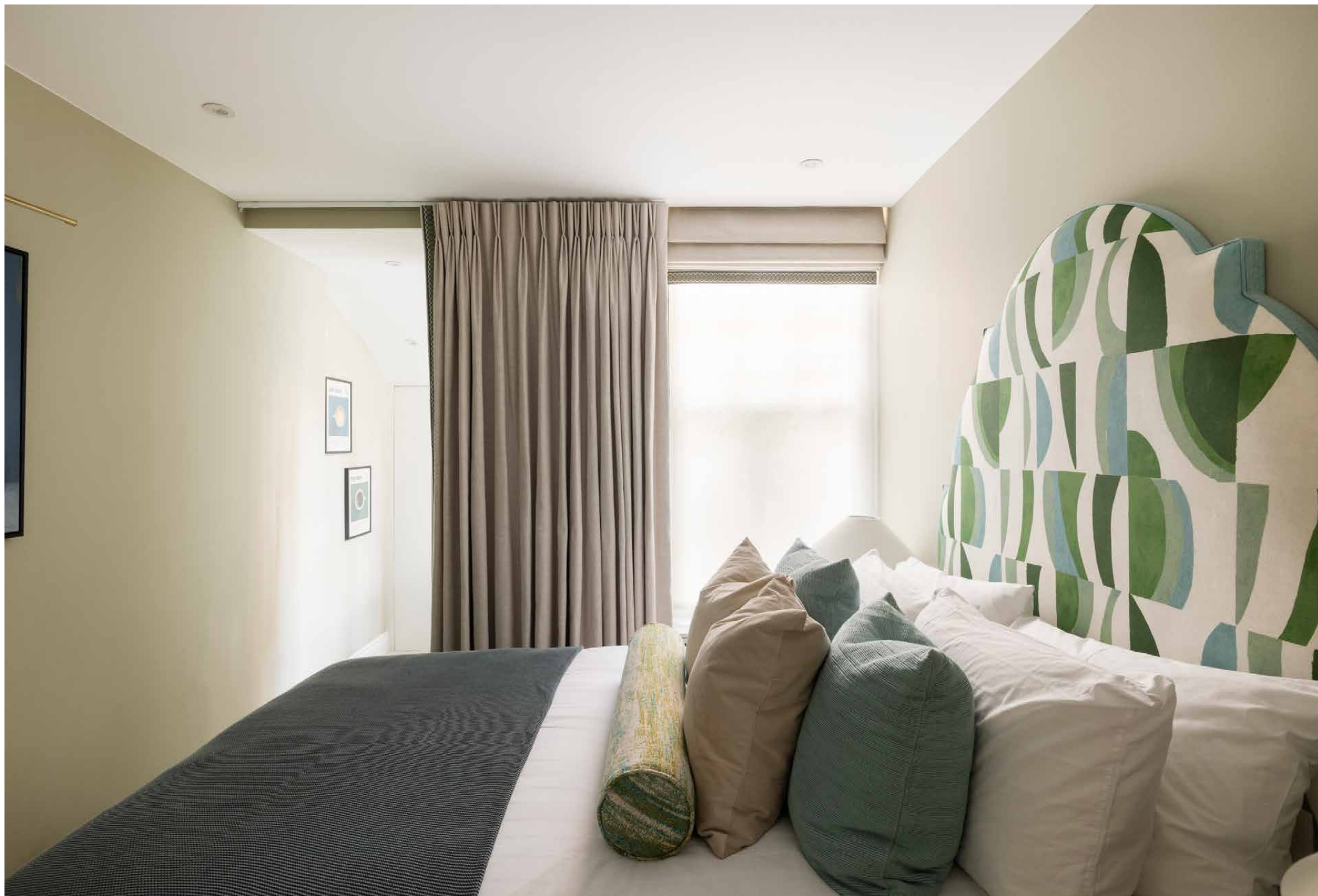














## LOCATION

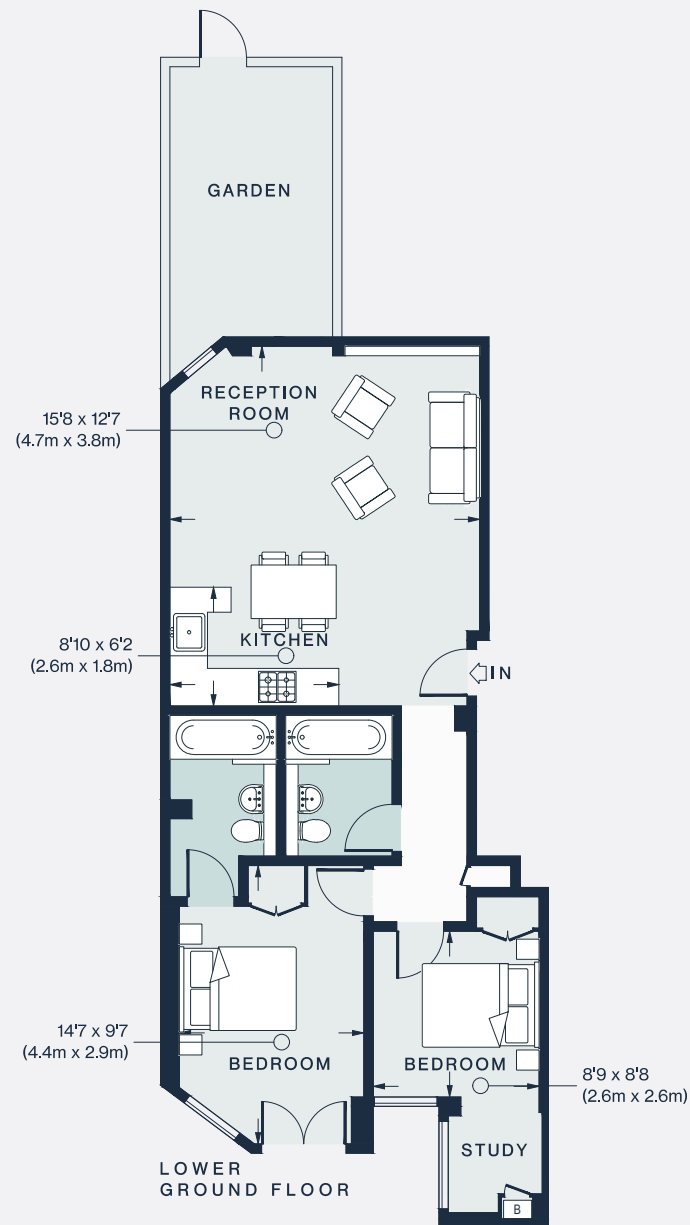
Just around the corner from the beating heart of Chelsea, Culford Gardens is in strolling distance of the best of everything.

Eat, drink and shop your way around the neighbourhood. Within one minute's walk, you'll find Michelin-starred restaurant The Five Fields. A few minutes more and you'll be at Sloane Square and famed French bistro The Colbert. Or make a beeline for the nearby boutiques of the King's Road. Duke of York Square and the Saatchi Gallery are also both in easy reach of your front door.



### PROPERTY HIGHLIGHTS

- Open-plan kitchen, dining and reception room
- Principal bedroom suite
- Guest bedroom
- Family bathroom
- Patio garden
- Royal Borough of Kensington & Chelsea



Approx. Gross Internal Area = 721 sq ft / 67 sq m

Floor plans are for illustrative purposes only and not to scale. Compliant with RICS code of measuring practice.  
Prepared for Domus Stay. Copyright © All Rights Reserved.



Please don't hesitate to get in touch if you have any questions or require any further information.

---

[hello@domusstay.com](mailto:hello@domusstay.com)

+44 (0)20 8168 8880

Domus Stay provides the perfect combination of property, place and personal service for the world's most remarkable people. If you have any questions, or if we can help in any way, please contact us on the above number. Be it about a property you have, a property you want, dates to check or any special requirements you may need, we'd love a chat.

