



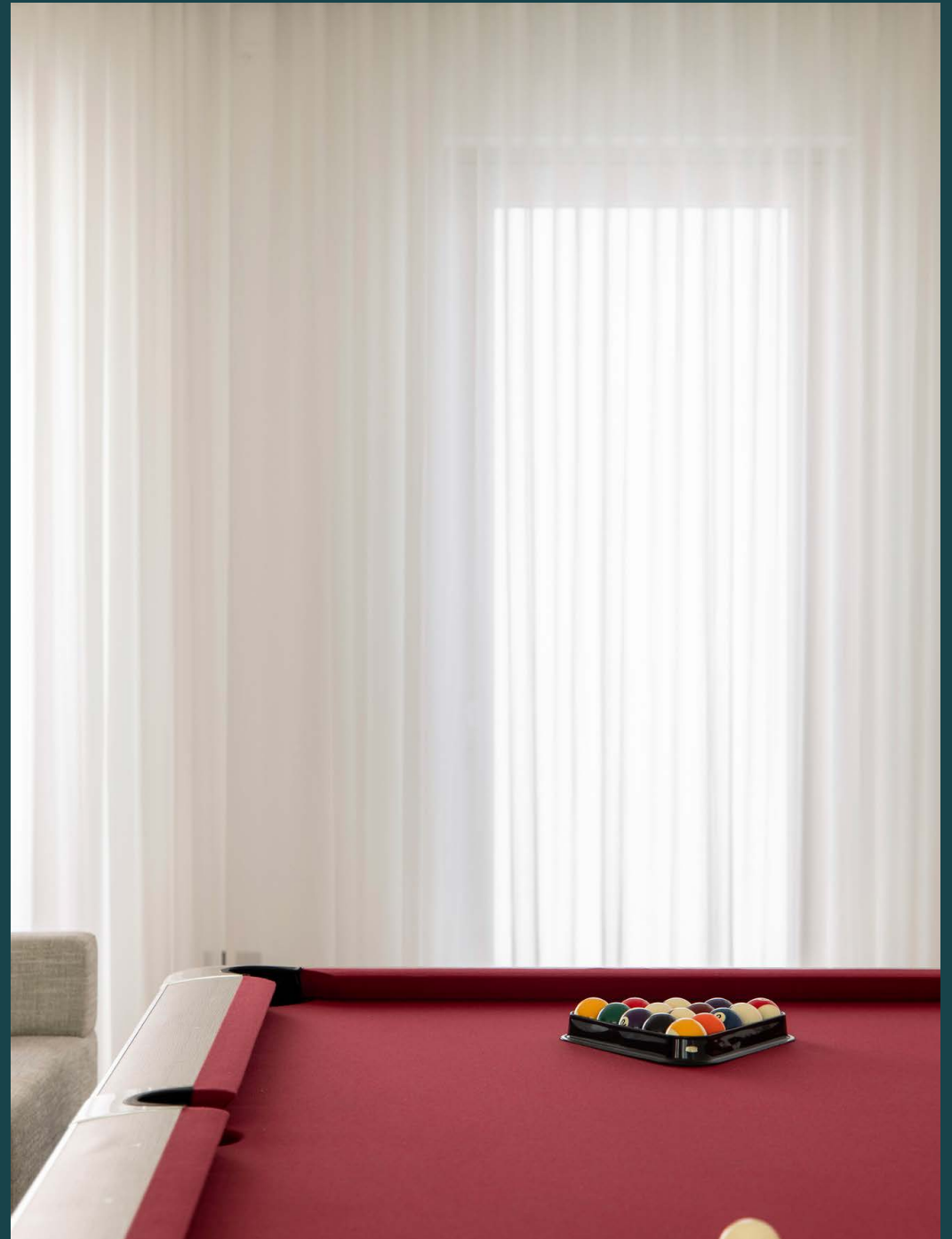
---

# Down Street Mews

Mayfair W1J

4 Bedrooms, 5 Bathrooms  
For 8 guests

---





Formed from a towering trio of glass cubes, this striking four-bedroom home in Mayfair combines seven floors of immaculate modernist design.

Crafted by architects Scott Brownrigg, Down Street Mews draws its inspiration from the renowned La Maison de Verre in Paris. Forming a striking visual interplay with the surrounding buildings, its glazing reflects an image of the traditional façades opposite.

A discreet gated mews leads to the entrance, where a lift connecting all seven floors takes you directly to the third floor living spaces. Underfloor heated solid oak flooring sweeps through to an expansive open-plan kitchen, dining and reception room – soft textures and soothing tones striking a balance with the home's contemporary framework. A showpiece of linear design unfolds in the Poggenpohl kitchen, where precise lines and handleless cabinetry form a spotless space to cook. Poised for culinary creations, integrated Gaggenau appliances pair with Neolith worktops.

Illuminated from all angles, swathes of light lend an uplifting ambiance to the minimalist design. A black and bronze abstract light overhangs a dining table with seating for eight, while a skylight above sets the scene for sunlit morning coffees. Down polished concrete steps, an additional reception room invites more laid back socialising. Lounge over one of the three thoughtfully arranged sofas or make use of the pool table. Primed for movie marathons, a cinema room on the lower basement floor comes with a bespoke system from James + Giles.









Whether you're hosting dinner parties or movie marathons, there's endless space to socialise across the home's seven floors.



“

A showpiece of linear design unfolds in the Poggenpohl kitchen, where precise lines and handleless cabinetry form a spotless space to cook.









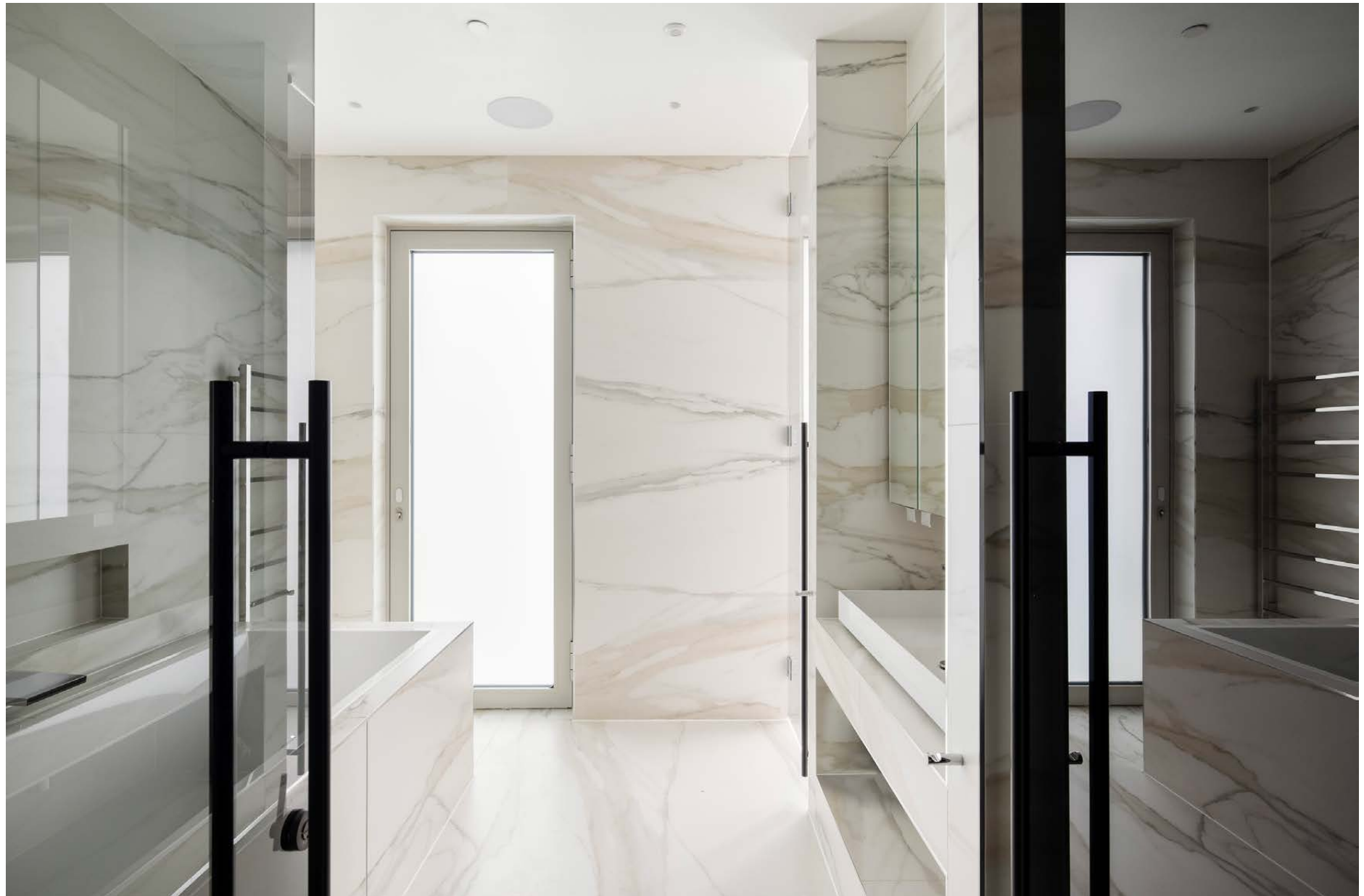


Arranged across multiple levels, four bedroom suites exude a sense of sophistication. In the principal bedroom suite, a pared-back palette lets the lighting take centre stage. Mornings feel easy here, with natural light cascading through double doors to a Juliet balcony. Come evening, adjust the ambiance to your taste with the lighting controls.

Bathe in opulence in the en suite bathroom, every inch wrapped in smooth white marble. Sink into an expansive bathtub or make the most of the pressurised water system in the rainfall shower. A spacious walk-in wardrobe helps you get ready for the day. Taking on equally tranquil tones, three further bedrooms come with en suite bathrooms.













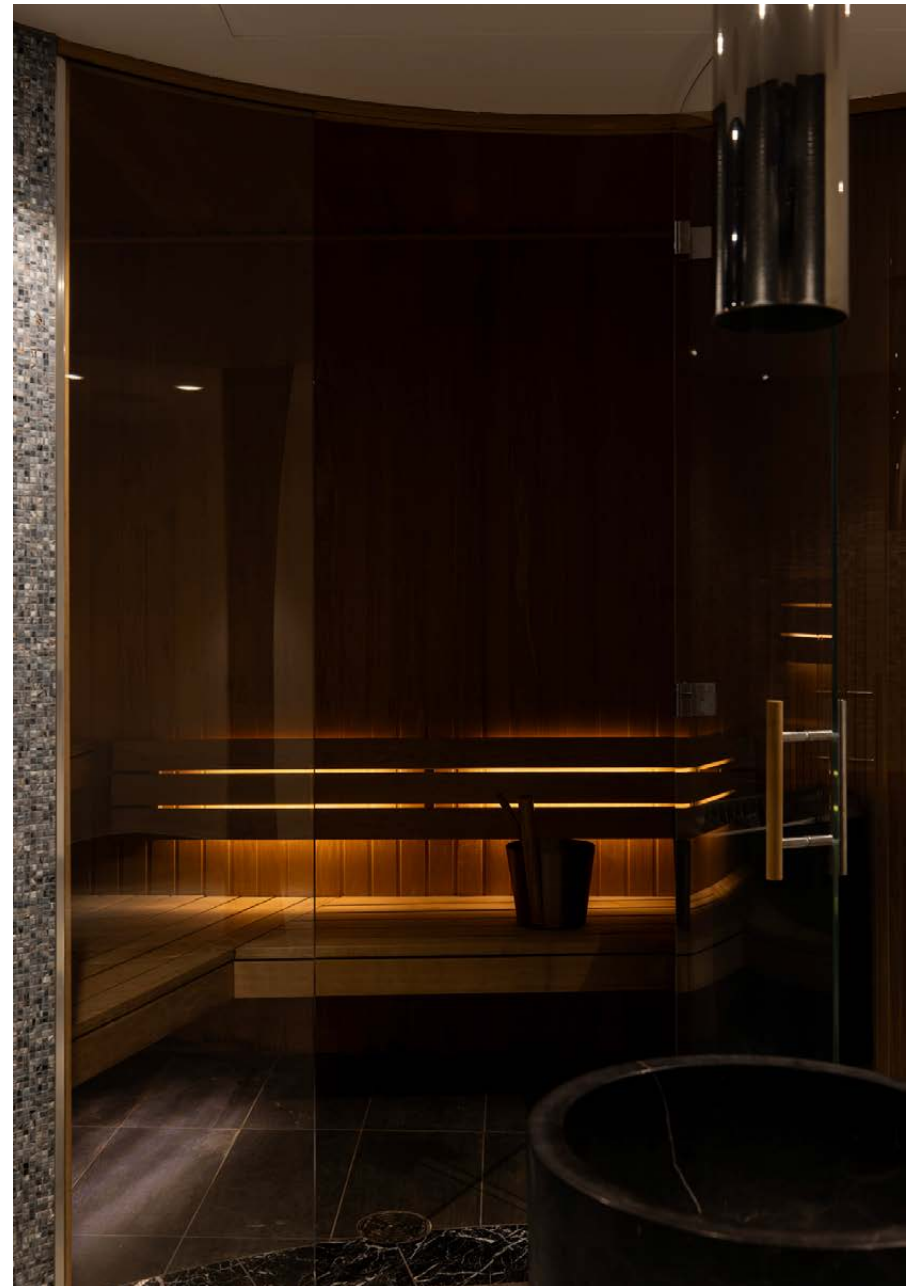
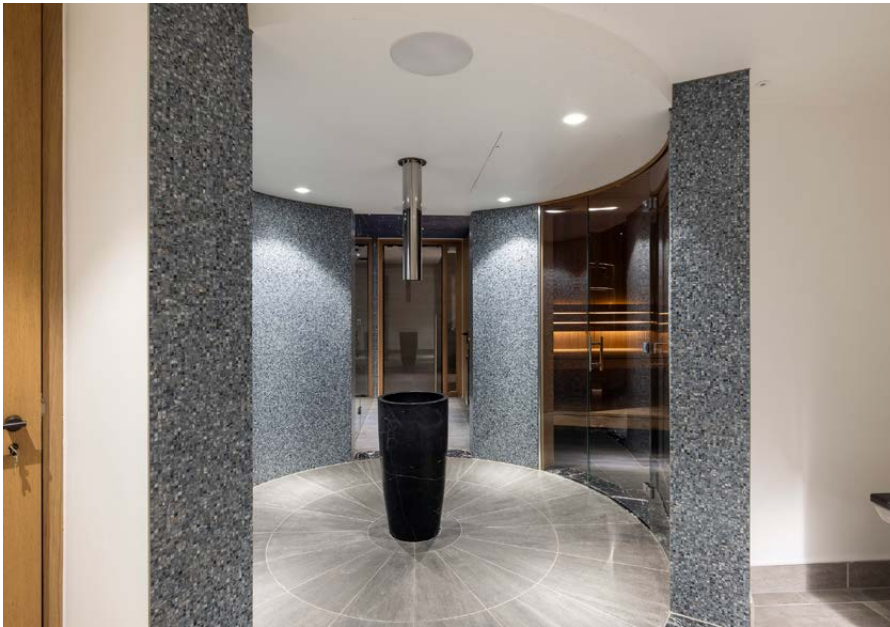






Positioned on the lower ground floor, a mirrored room is styled for working up a sweat. Post work-out, your own private Dröm designed spa awaits downstairs. Find an entire floor dedicated to a spectacular spa and wellness space, equipped with a sauna, tiled Hammam with heated bench, and a steam room. Just set the scene with the 'Starry Sky' lighting feature and unwind.

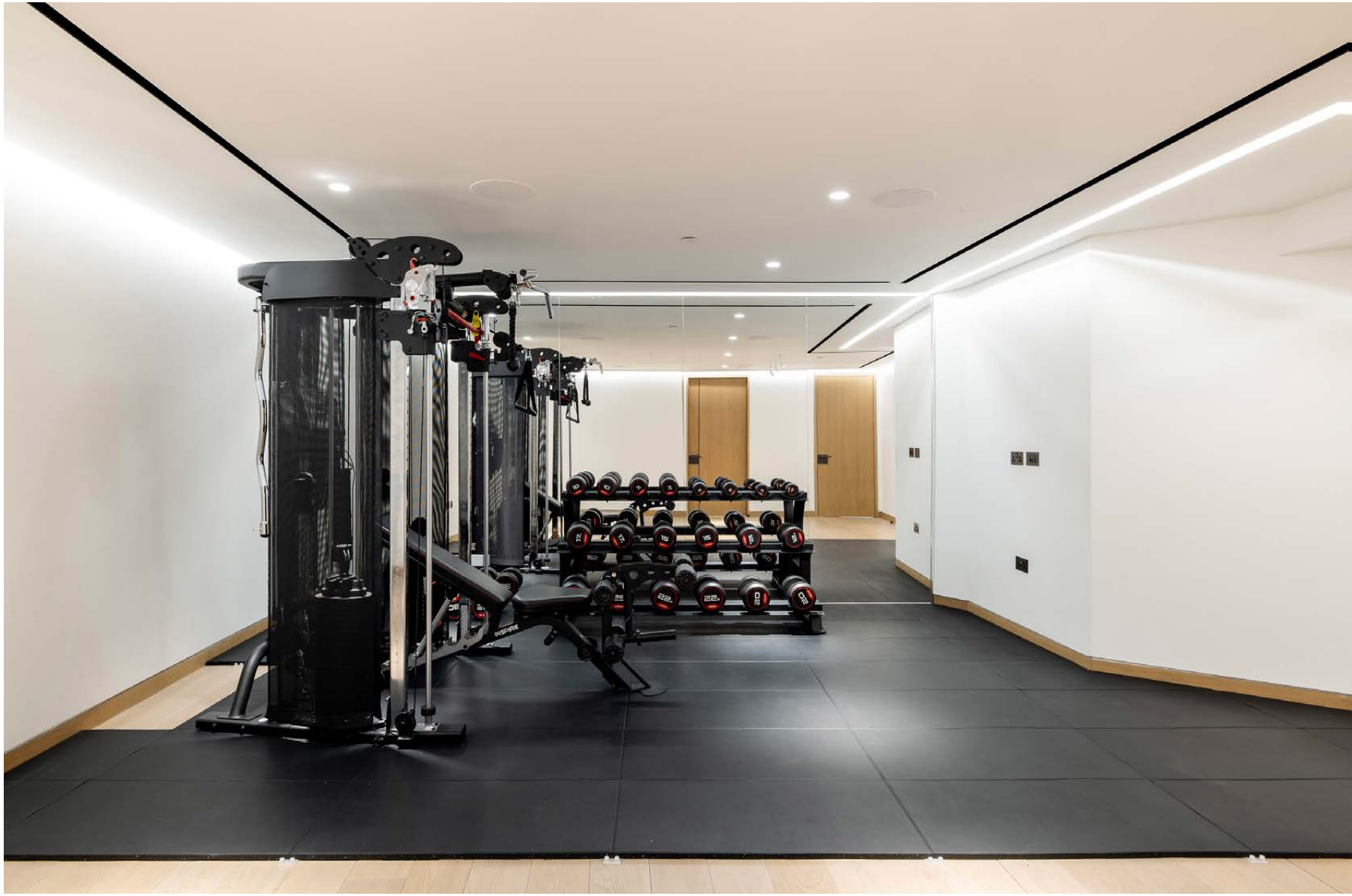
The home also comes with a bespoke-designed four vehicle car stacker, accessed via remote fob through electronic gates.













## LOCATION

A walk away from central London, Down Street Mews places you within easy reach of Mayfair's most coveted restaurants, members clubs and more.

Start your day with a stroll, both Hyde Park and Green Park in walking distance. Head to 18th century square Shepherd Market for a coffee, then browse boutiques with everything from rare books to jewellery. Stop by Nobu for a taste of refined Japanese cuisine, then peruse the latest exhibitions at the Royal Academy of Arts. Come evening, fine dining options are in abundance. Visit Tamarind for an authentic North Indian dining experience or be immersed in eclectic Peruvian fashion at Coya.





## PROPERTY HIGHLIGHTS

- Open-plan kitchen, dining and reception room
- Additional reception room
- Principal bedroom suite
- Three guest bedroom suites
- Bathroom
- Cinema
- Gym
- Hammam
- Sauna
- Steam room
- Utility room
- Courtyard
- Air conditioning
- City of Westminster





Please don't hesitate to get in touch  
if you have any questions or require  
any further information.

---

[hello@domusstay.com](mailto:hello@domusstay.com)

+44 (0)20 8168 8880

Domus Stay provides the perfect combination of property, place and personal service for the world's most remarkable people. If you have any questions, or if we can help in any way, please contact us on the above number. Be it about a property you have, a property you want, dates to check or any special requirements you may need, we'd love a chat.

