



St Petersburg Mews

Notting Hill W2

2 Bedrooms, 2 Bathrooms
For 4 guests





A quintessential mews home reimagined into an artistic marvel, moments from Hyde Park.

A fusion of rustic textures and vibrant colours, this two-bedroom residence blends a farmhouse aesthetic with fast-paced city living. Nestled between upscale Westbourne Grove and picturesque Hyde Park, West London's prime locales are at your doorstep. From designer boutiques to sunlit boat rides, St Petersburg Mews promises the best of both worlds.

Exposed timber beams, stable doors and a wooden pitch roof honour the home's once humble origins as an early 20th century stable and carriage house. Updated with a built-in workshop, home office and spacious open-plan layout, today it offers seamless living and entertaining space.

Brushed plaster floors and poured concrete floors add a contemporary undercurrent in the open-plan kitchen and dining room, contrasting the array of reclaimed furniture. Centred around a huge wooden kitchen island, the space feels sociable and streamlined. Pull up a leather breakfast stool for morning coffees or host around the dining table; eclectic artwork and contemporary photography provide the talking points. Open the French doors to the terrace in warmer months for inside-out living.

Upstairs, the living room is a spectacle of colour, with a berry-toned palette offering an opulent yet uplifting feel. Light enters through west-facing windows – overlooking the roof terrace – onto a desk, making for a bright space for home working.







Reconnect with friends or family. Or both. This dedicated dining space is perfect for dinner parties, complete with a view of the private courtyard

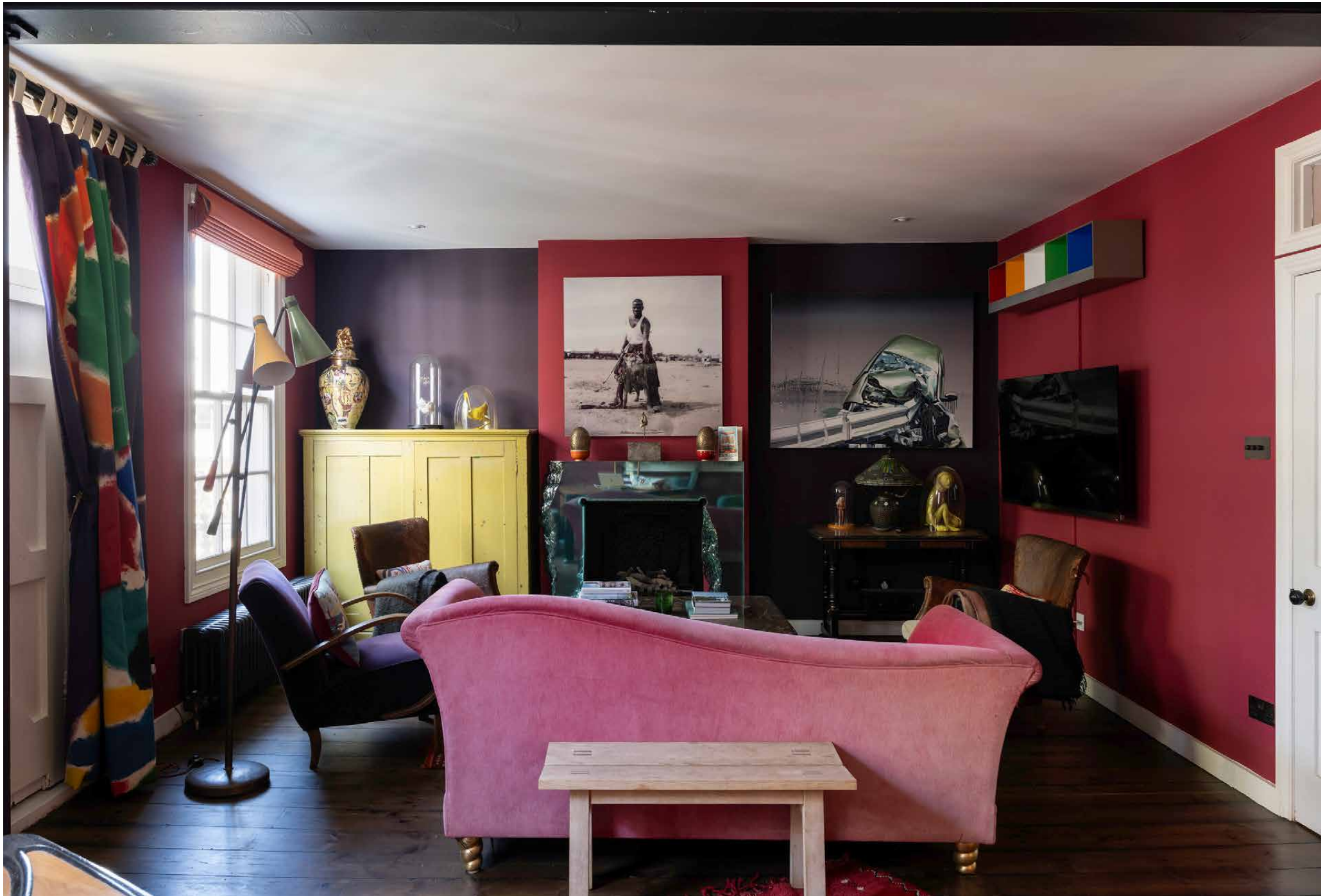


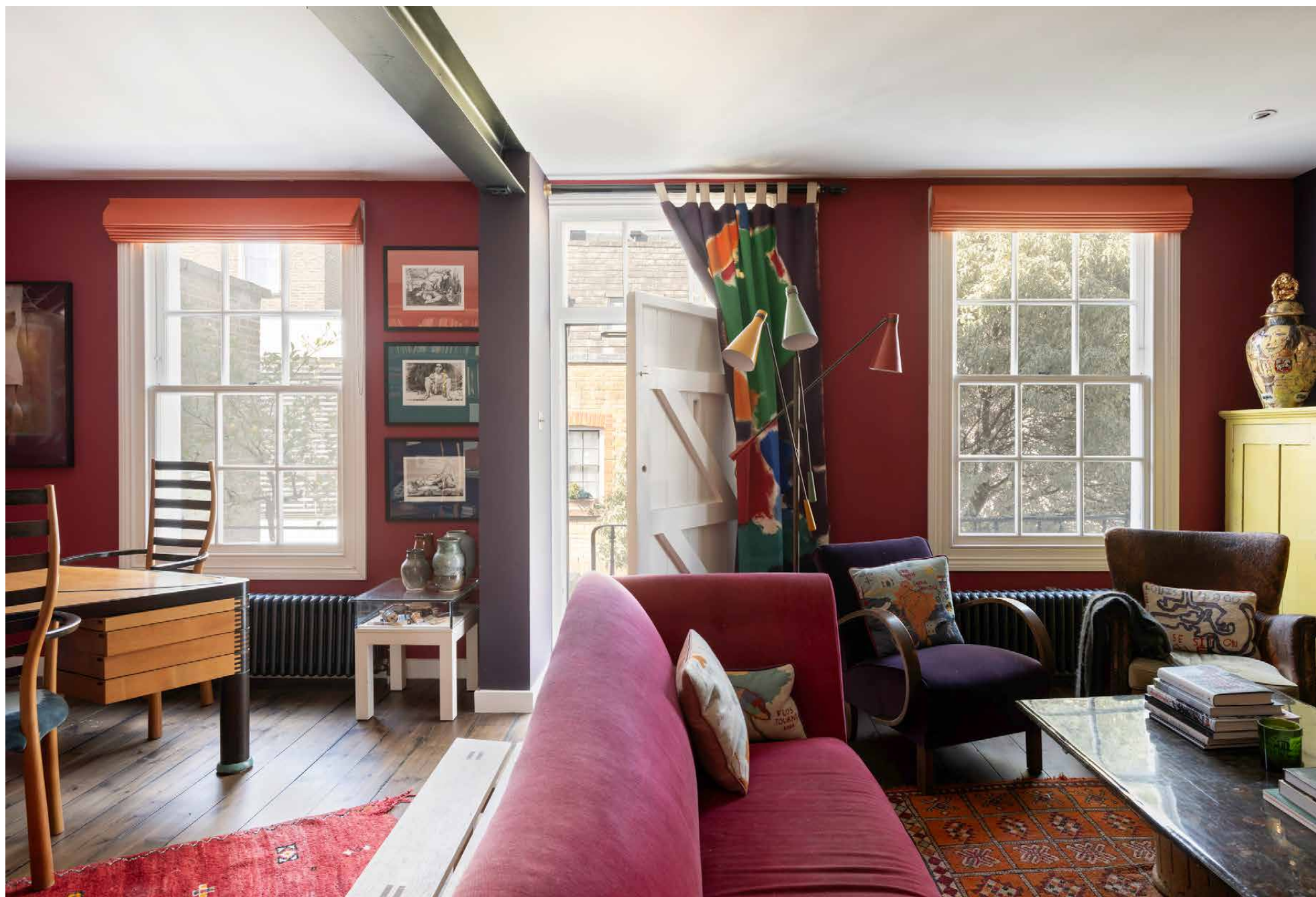
“

A curated collection of masterpieces won't fail to give you pause. Every piece adds to the creative character of this property.











The principal bedroom is the pièce de résistance, stretching across the second floor to offer considerable living space and a walk-in wardrobe. A haven of minimalism, whitewashed walls and floors offer a calming atmosphere. Through an archway, the en suite bathroom features a freestanding tub, beautifully lit through Velux windows. A second bedroom is found on the first floor; an energising space with canary-yellow walls, served by a family bathroom.

A curated display of portraiture punctuates the considered décor on every floor, paying tribute to the visual arts and creating a thoroughly inspirational and uplifting setting. If you're searching for a home that celebrates originality, this is it.









LOCATION

Minutes from Kensington Palace and acres of green space, well-heeled Notting Hill is also in walking distance here.

A quiet stroll in Hyde Park, a vintage treasure hunt along Portobello Market, or brunching on Westbourne Grove: everything you're looking for is a stone's throw away. Grab coffee at Guillam Coffee House, book a workout at Bodyism or linger over a leisurely lunch at Beam. In the evening, neighbourhood favourite Sol's is the place to sip natural wines, followed by dinner at The Park.



PROPERTY HIGHLIGHTS

- Open-plan kitchen and dining room
- Generous living space
- Principal bedroom suite with walk-in wardrobe
- Guest bedroom
- Family bathroom
- Terrace
- The Royal Borough of Kensington & Chelsea



Approximate Area = 185.6 sq m / 1998 sq ft (Excluding External Void)
Including Limited Use Area (12.6 sq m / 136 sq ft)

Surveyed and drawn in accordance with the International Property Measurement Standards (IPMS 2: Residential)
fourwalls-group.com 749434





Please don't hesitate to get in touch if you have any questions or require any further information.

hello@domusstay.com

+44 (0)20 8168 8880

Domus Stay provides the perfect combination of property, place and personal service for the world's most remarkable people. If you have any questions, or if we can help in any way, please contact us on the above number. Be it about a property you have, a property you want, dates to check or any special requirements you may need, we'd love a chat.

