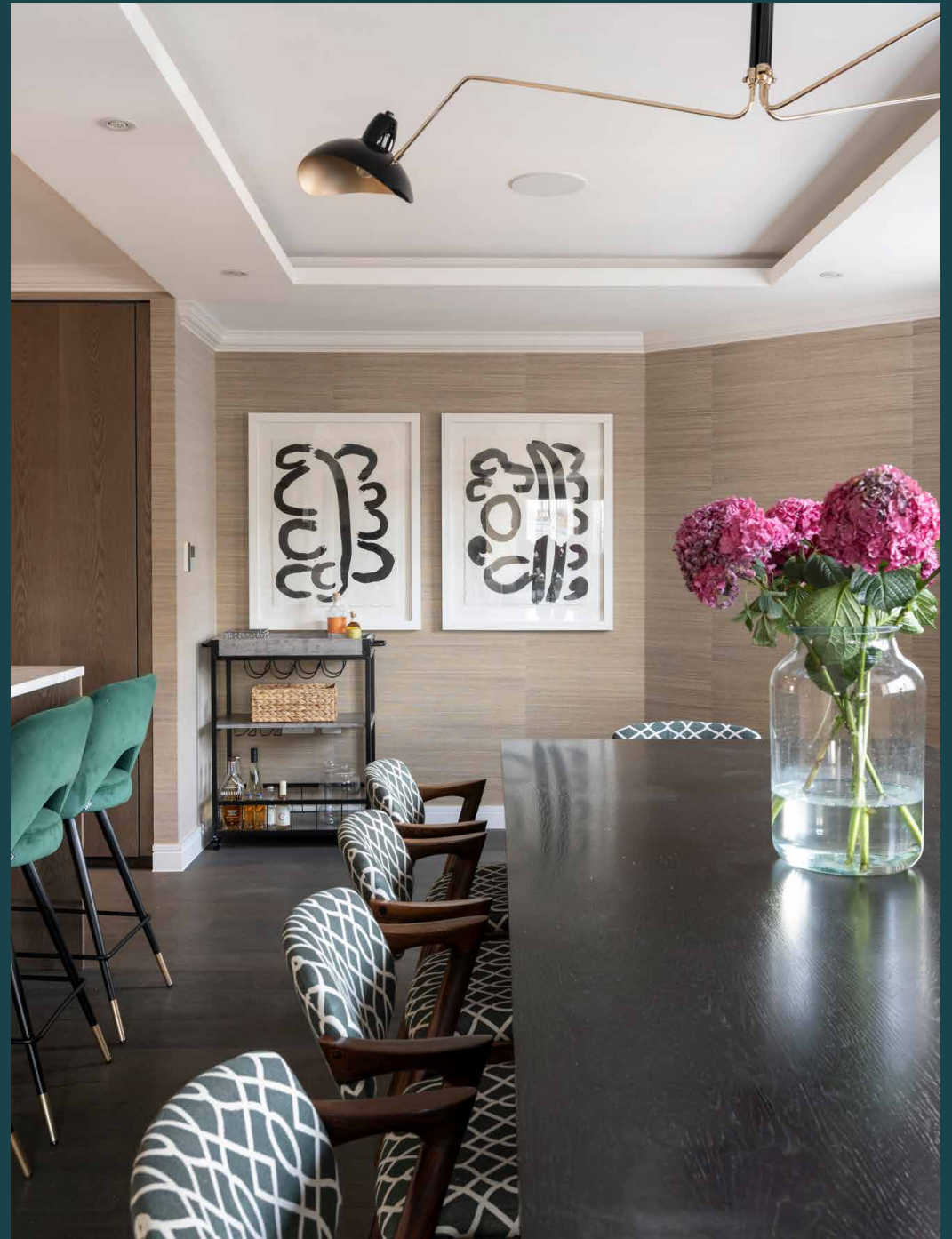


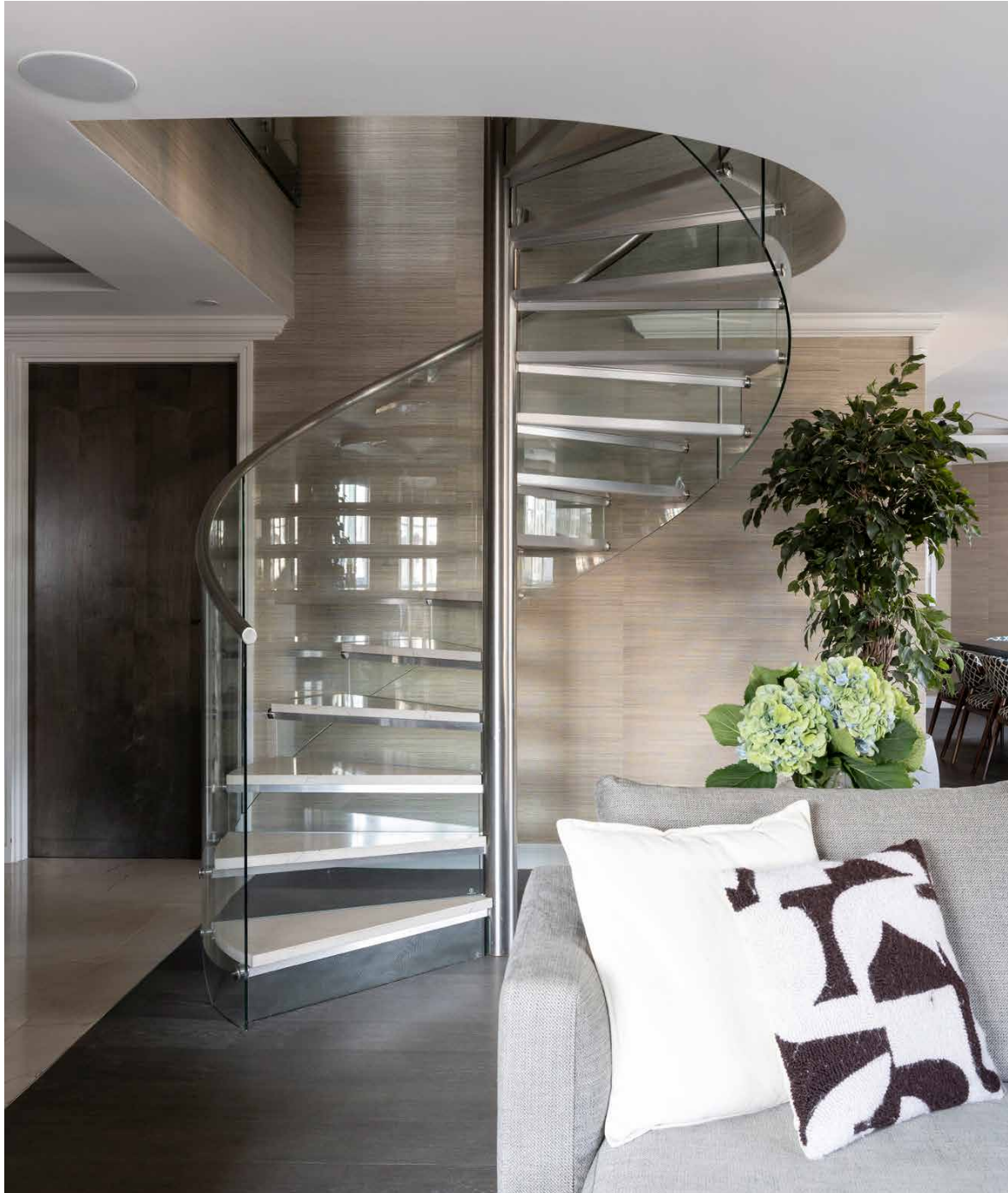
domus
stay.

New Cavendish Street

Marylebone W1W

3 Bedrooms, 3 Bathrooms
For 6 guests





Arranged across the top two floors of a boutique Marylebone development, this penthouse apartment is imagined with state-of-the-art, urbane interiors.

In a central London spot famed for its 20th-century literary links, a towering Victorian mansion block has been reinterpreted with contemporary style. Equidistant from Oxford Street and Regent's Park, an exceptional penthouse sits at the heart of the action.

Arranged across two sprawling floors plus a private roof terrace, this considered duplex comes with space to spread out. Take the lift directly to the fourth floor, and step inside to a social hub awash with light.

Featuring design by Louisa Penn Interiors, a dialogue between light and dark plays out. Neutral walls and dark wooden floors set the stage for entertaining in the lounge – sip coffees at the window seat or settle back into the sofa for movies on the widescreen TV. The German-engineered Hacker kitchen is equally as impressive – an open-plan layout and Miele appliances offer versatility for the most serious or sociable chefs. Grab a bottle from the wine cooler and gather friends at the ten-seat dining table.



With an unrivalled setting in central London, there's easy access to the best of the city here. Spend days laid back in Regent's Park or stroll down to Oxford Street – less than 10 minutes' walk away.



“

Featuring design by Louisa Penn Interiors, a dialogue between light and dark plays out.







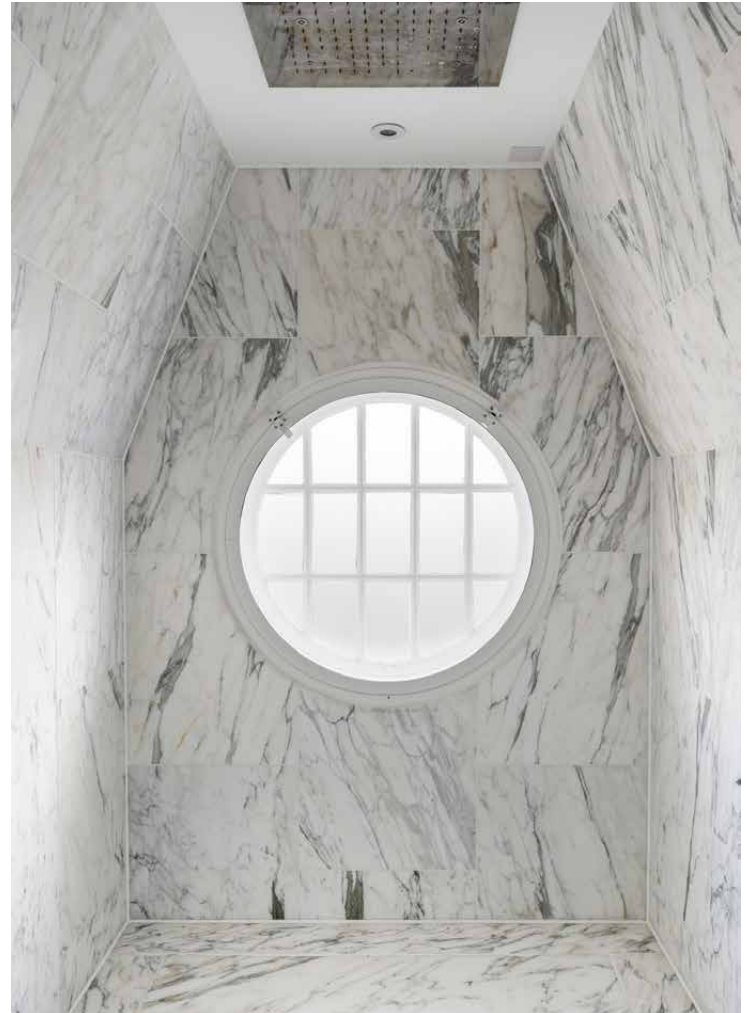
Ascending a striking spiral staircase to the upper floor, the principal bedroom emulates your own private enclave. Sleeping quarters are pared-back for a restful feel, while a walk-in wardrobe leads to the pièce de résistance. Decked out in Italian marble, the en suite bathroom is sky-lit and showstopping. Sink into the freestanding tub or wash the day away under the rainfall shower. Two further bedroom suites are found on the fourth and fifth floor, the former connecting directly with a private study.

At the top of the home, capitalise on the exceptional setting with afternoons on the roof terrace. Featuring panoramic city views, it's the perfect spot to soak up the sun or enjoy sundowners with friends. The home additionally benefits from a weekday porter, while air conditioning throughout keeps things cool in the warmer weather.











LOCATION

Set between Regent's Park and Oxford Street, New Cavendish Street is an exceptional setting for easy access to the city.

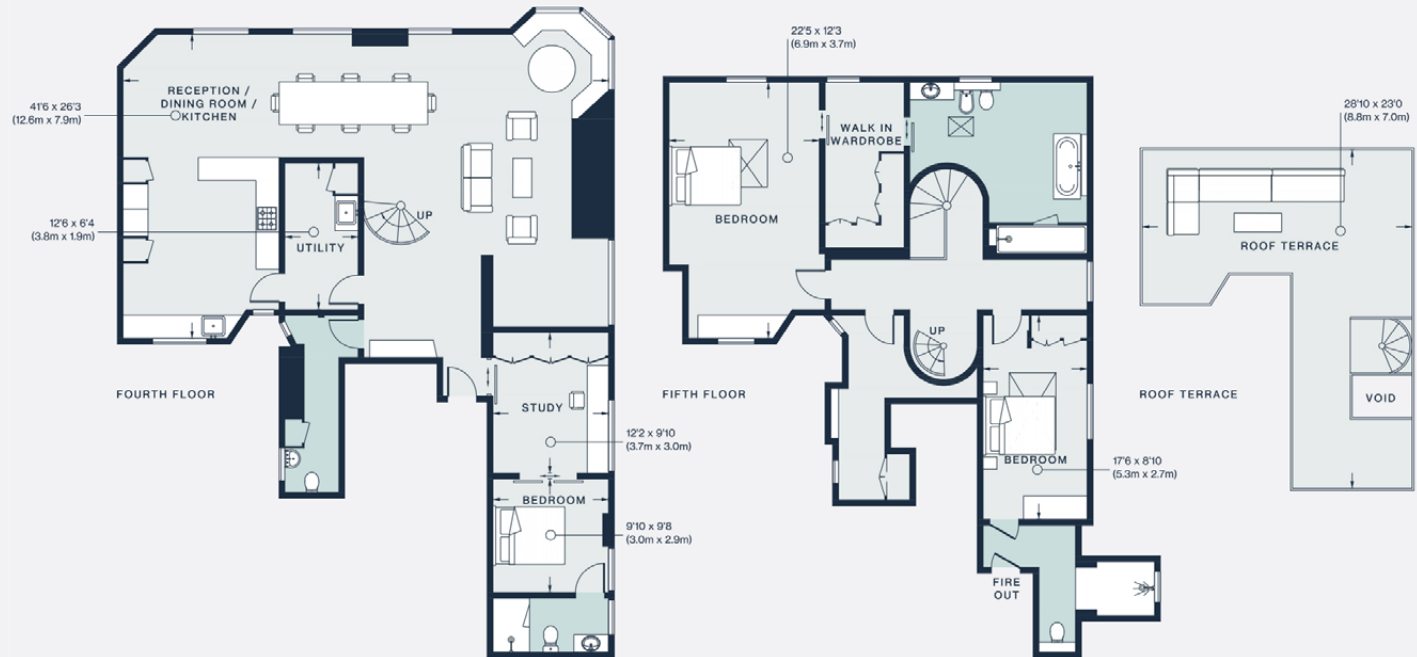
Only a short walk away from some of London's best sights, this penthouse apartment sits in a sought-after spot. Start the day with brunch and coffee from Drunch, before heading south to Oxford Street for an array of retail therapy options. For Michelin-starred Indian cuisine, dine at Trishna. For culture, head to Moco Museum London. On sunny days, the lawns and gardens of Regent's Park are within a 10-minute walk.





PROPERTY HIGHLIGHTS

- Open-plan kitchen, dining and reception room
- Principal bedroom suite
- Two guest bedroom suites
- Study
- Roof terrace
- Air conditioning
- Lift access
- Porter



Approx. Gross Internal Area = 2,511 sq ft / 233.3 sq m

Floor plans are for illustrative purposes only and not to scale. Compliant with RICS code of measuring practice.



Please don't hesitate to get in touch if you have any questions or require any further information.

hello@domusstay.com

+44 (0)20 8168 8880

Domus Stay provides the perfect combination of property, place and personal service for the world's most remarkable people. If you have any questions, or if we can help in any way, please contact us on the above number. Be it about a property you have, a property you want, dates to check or any special requirements you may need, we'd love a chat.

