
Arundel Gardens

Notting Hill W11

6 Bedrooms, 5 Bathrooms
For 12 guests





Impressive proportions and striking design converge at this family home on one of Notting Hill's most stylish streets.

Overlooking a gated garden square, this six-bedroom townhouse is quintessential Notting Hill. Set over six generous floors, it brings together period grandeur and modern innovation – tailored for elegant gatherings, quiet moments and everything in between.

From the street, its classic stucco frontage sets the tone. Beyond a smart portico entrance, the home makes an immediate statement with its palatial double-height proportions. Soaring ceilings, heritage cornicing and Versailles oak flooring offer a nod to the past, while contemporary touches bring things firmly into the now. The kitchen has been imagined for streamlined culinary activity, with a glossy marble island, seamless rows of cabinetry, high-tech Gaggenau and Siemens appliances, two dishwashers and a large fridge-freezer. At the rear of the room, an informal breakfast area is backdropped by full-height Crittall windows that open to bring the outside in.

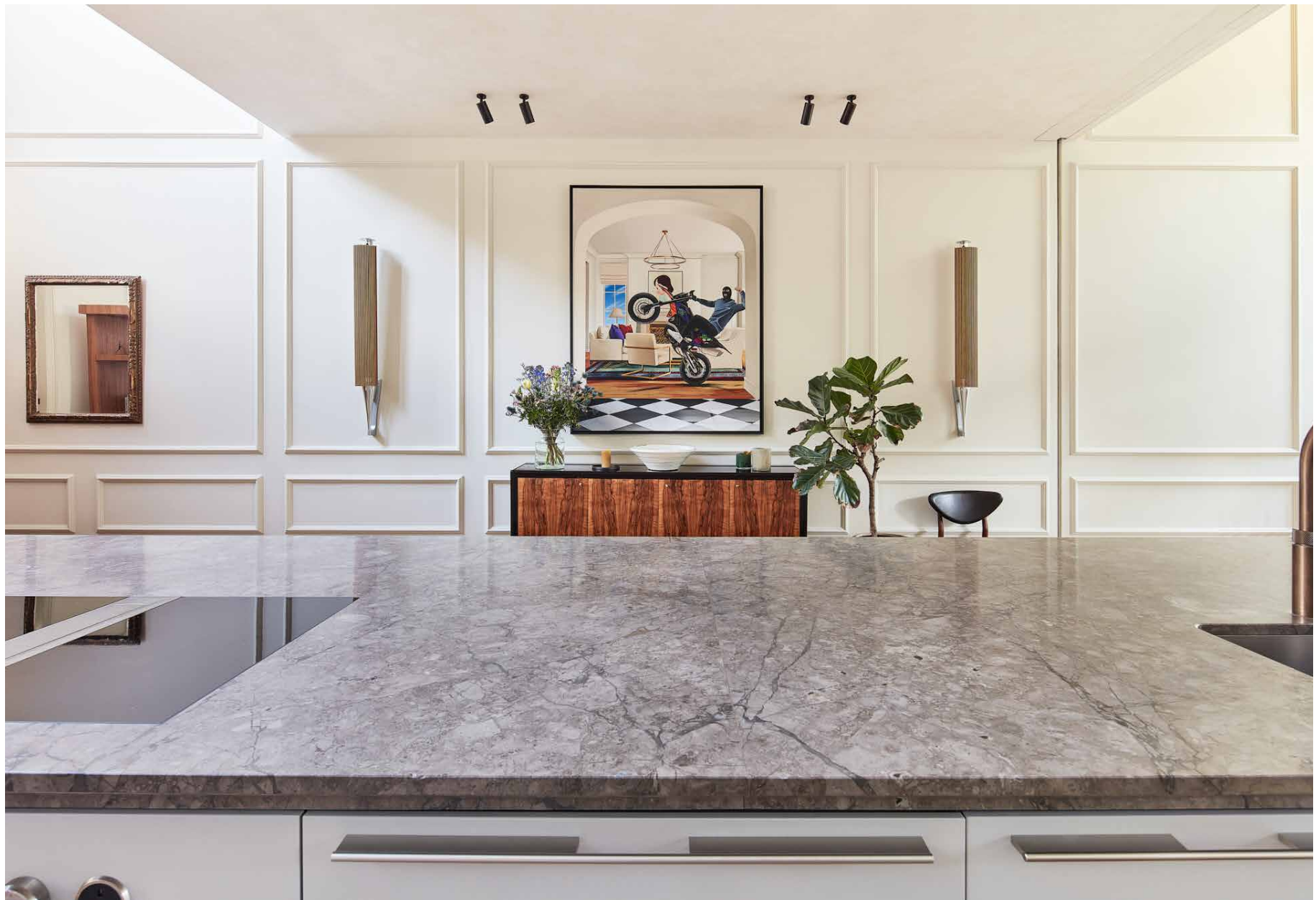
Head up to the first-floor mezzanine via the private lift or stylish open staircase, where a quiet reading nook overlooks the kitchen below. Behind, a formal dining area is backdropped by handsome display shelving and striking artwork. It's a refined spot for entertaining, complete with a gas fireplace and a built-in marble bar. Downstairs, the cinema and games room offer a more relaxed rhythm – perfect for family film nights or lazy Sunday lounging. Surround sound throughout means ambience follows you from room to room.



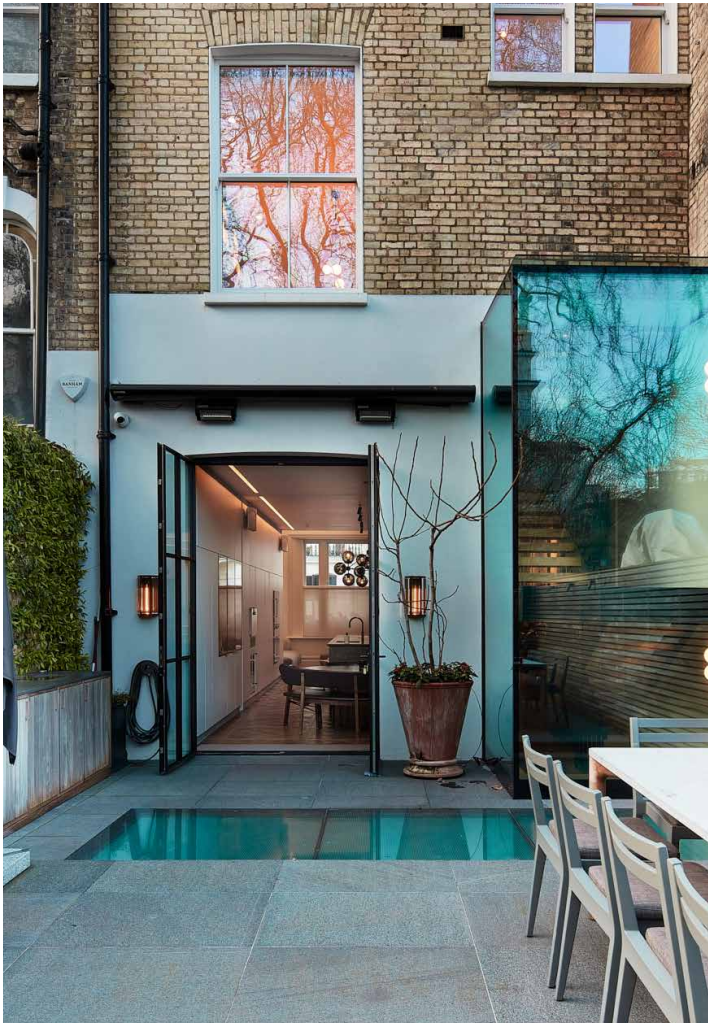






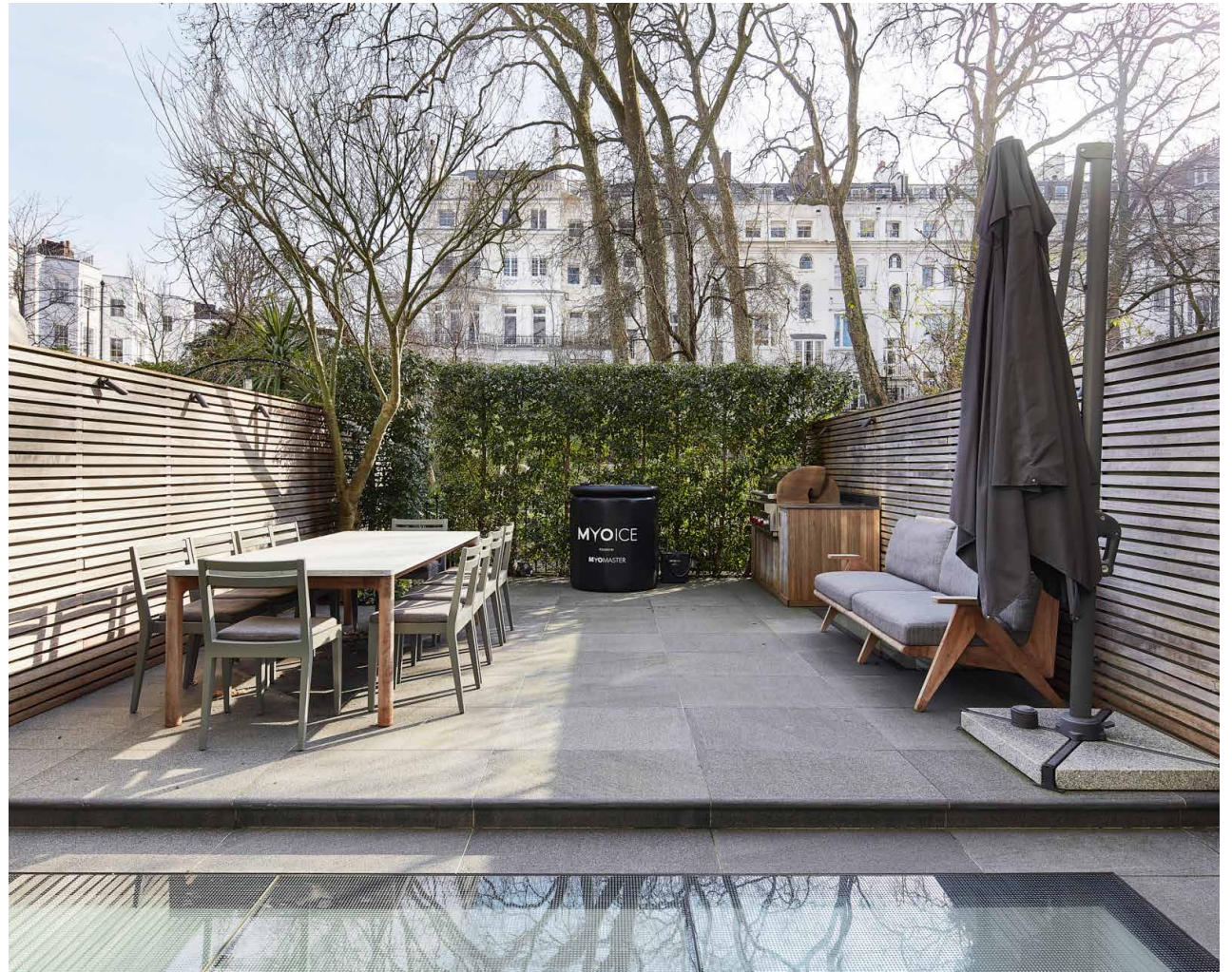


The private south-facing patio garden is tailor-made to enjoy London's warmer months. There's also access to the highly sought-after Arundel Gardens – an exclusive tree-filled sanctuary away from the buzz.



“

Completely private and utterly ambient, the garden is ideal for barbecues and al fresco dining.

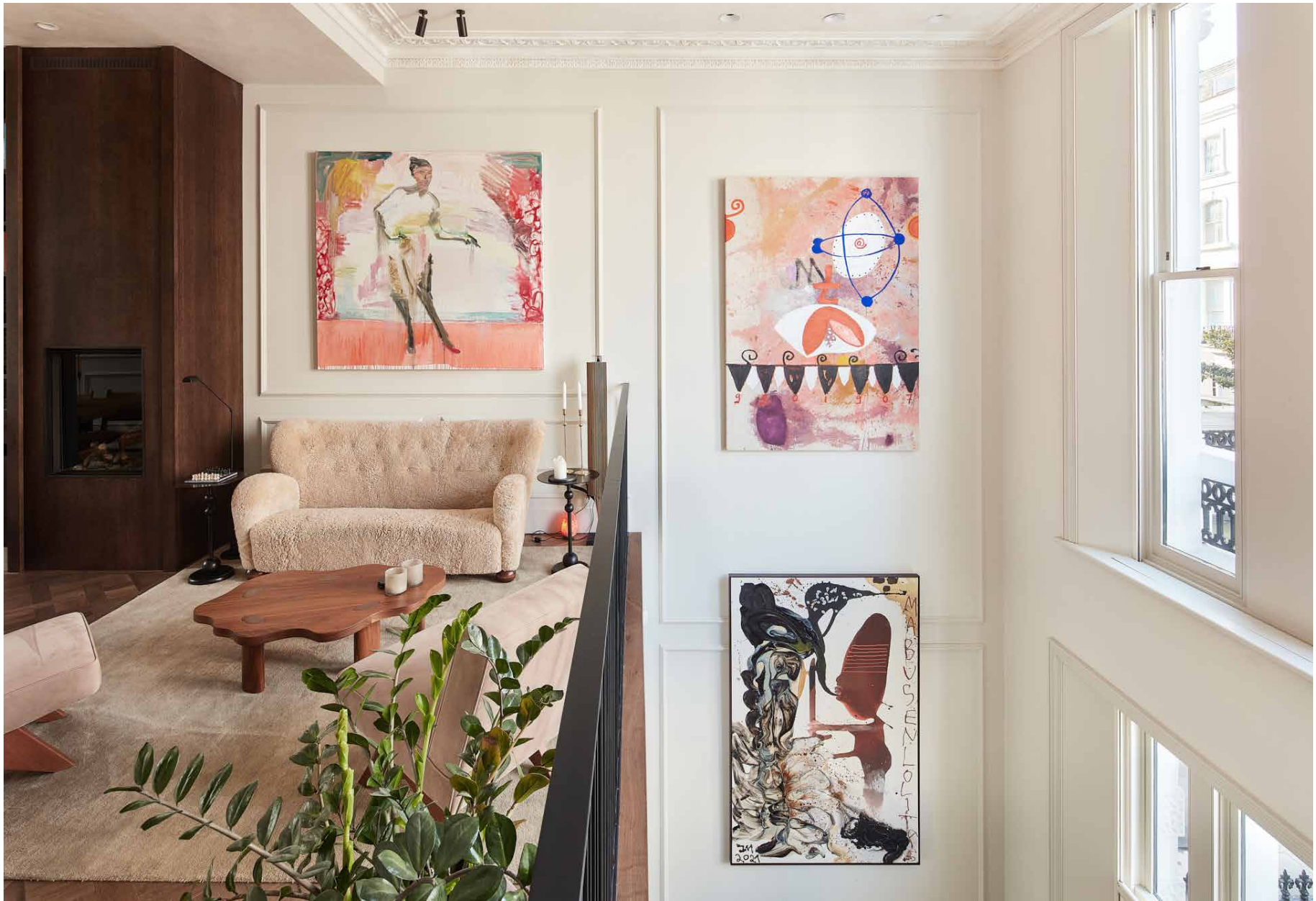










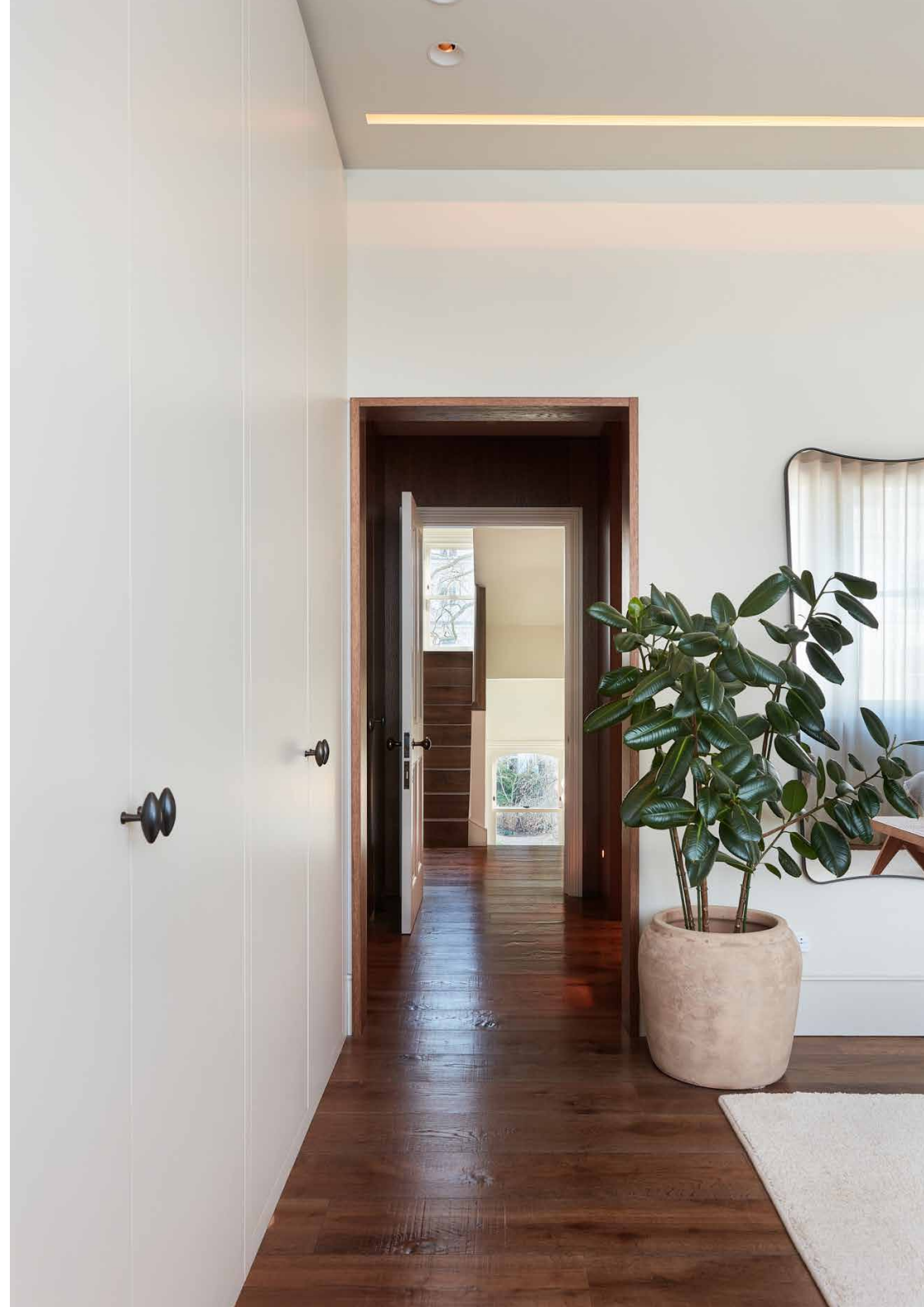




The principal bedroom suite occupies the entire second floor, crafted with a minimalist interior eye. Serene, softly lit and beautifully pared-back – pale walls and wood floors set a calming tone, while a row of full-height whitewashed wardrobes offers a neat storage solution. A trio of sash windows flood the room with natural light, while the bespoke oak dressing room and marble-lined bathroom add a layer of understated elegance. Think freestanding tub, double vanity, integrated storage – every element calm and considered.















Spread across the third and fourth floors, there are two guest bedroom suites, three additional bedrooms and two further bathrooms – all continuing the home's flawless craftsmanship. On the lower-ground floor, another bedroom enjoys a kitchenette, making it an ideal offering for staff or long-stay visitors.





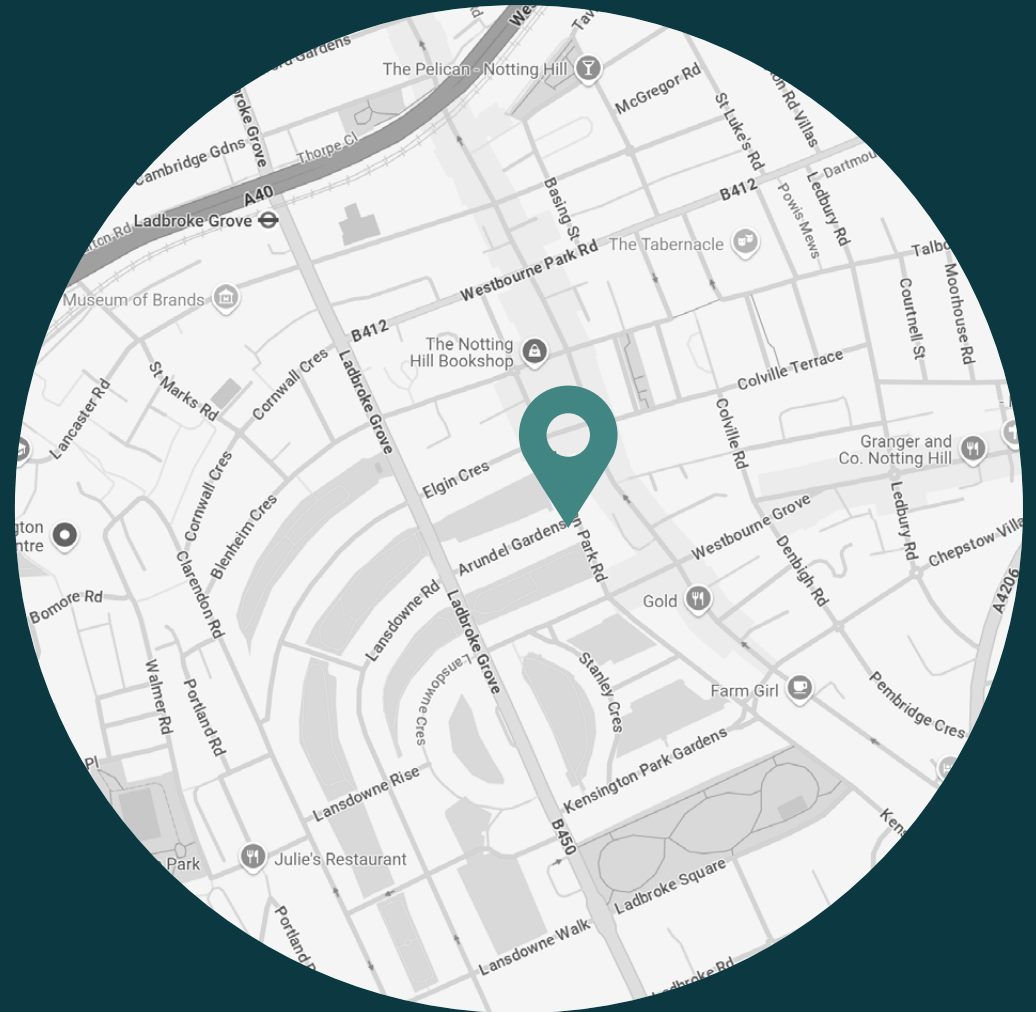




LOCATION

Nestled among archetypal Notting Hill townhouses, Arundel Gardens has a distinctly peaceful feel with plenty to entertain on the doorstep.

Moments from Portobello Road, Westbourne Grove and Ledbury Road, coveted eateries including Gold, Ottolenghi and The Ledbury are minutes away. Stop by Notting Hill Fish & Meat Shop for seasonal local produce, work up a sweat at SoulCycle or head to Holland Park for a meditative stroll. For fine dining, Gold or Core by Clare Smyth are firm favourites, or end the day with a blockbuster at the Electric Cinema.



PROPERTY HIGHLIGHTS

- Contemporary kitchen and breakfast room with double-height void
- Formal dining room with home bar
- Principal bedroom suite with dedicated dressing room
- Two guest bedroom suites
- Three further bedrooms
- Three further bathrooms
- Two cloakrooms
- Private garden
- Games and cinema room
- Wine cellar
- Laundry room
- Staff accommodation
- Air conditioning
- Lift
- Access to private communal gardens
- Royal Borough of Kensington and Chelsea





Please don't hesitate to get in touch if you have any questions or require any further information.

hello@domusstay.com

+44 (0)20 8168 8880

Domus Stay provides the perfect combination of property, place and personal service for the world's most remarkable people. If you have any questions, or if we can help in any way, please contact us on the above number. Be it about a property you have, a property you want, dates to check or any special requirements you may need, we'd love a chat.

