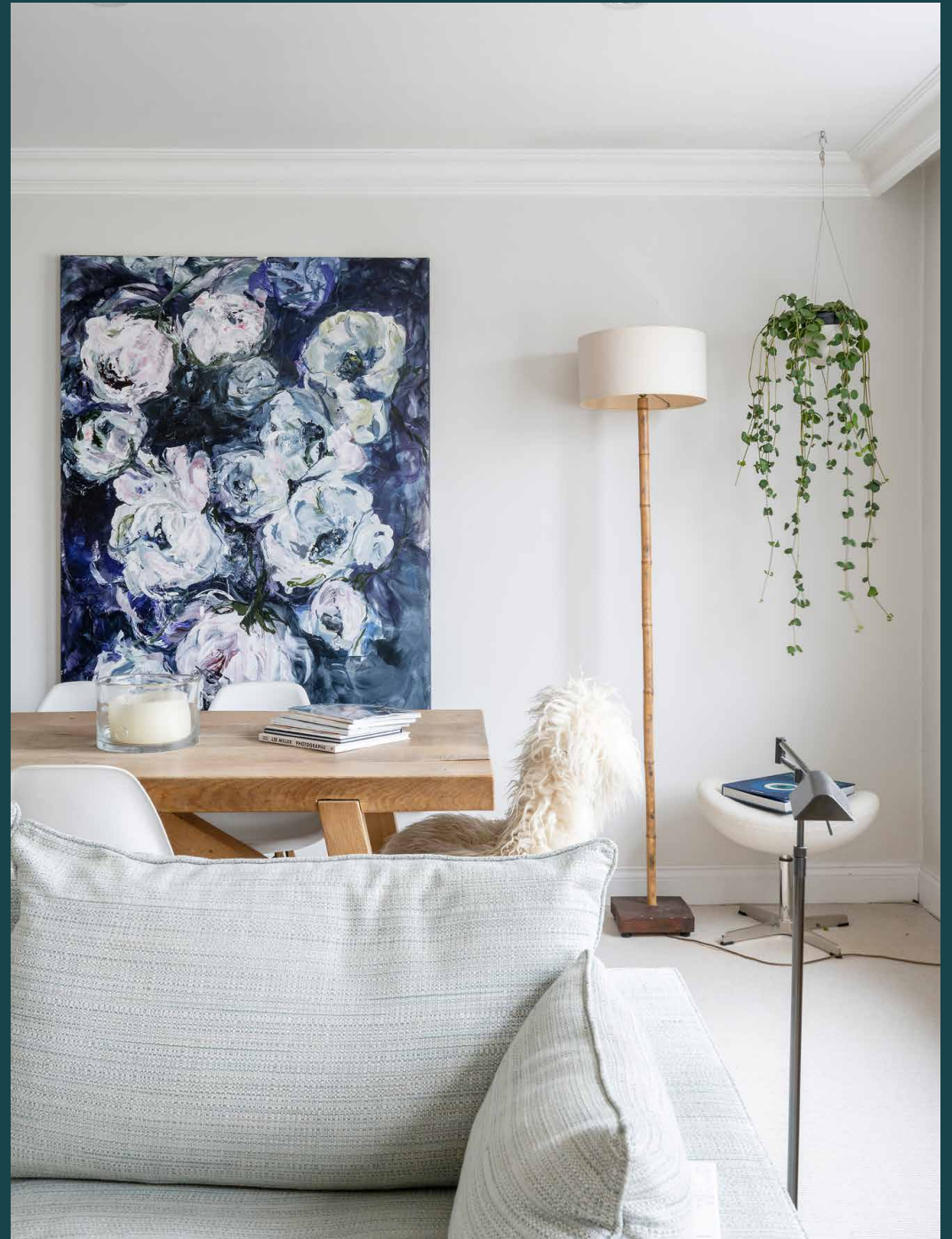

St Mark's Place

Notting Hill W11

2 Bedrooms, 1 Bathroom
For 4 guests





Within walking distance of Portobello Road, this considered two-bedroom apartment provides a calming backdrop for everyday life.

Pared-back design sets a welcoming scene at this Notting Hill apartment, arranged over three floors. Large, light-filled living spaces, a private terrace and a designated study mean every eventuality is accommodated for here – from hosting to working from home. Throughout, Scandi-style furniture, neutral tones and tactile soft furnishings create a relaxing environment.

The hub of the home sits on the middle floor, with a quiet study and cloakroom below, and bedrooms and a bathroom above. This sense of separation accentuates the feeling of space and privacy. Two sash windows brighten the open-plan layout, which spans lounging and dining areas. A large wooden table can easily seat six; other seating options include a deep sofa and Arne Jacobsen-inspired egg armchairs positioned in front of the fireplace. The breakfast bar provides another area to congregate overlooking the timeless kitchen. A streamlined space to cook, it both looks and acts the part thanks to the abundance of worktop space, storage and high-spec integrated appliances.





Large, light-filled living spaces, a private terrace and a designated study mean every eventuality is accommodated for here – from hosting to working from home.



“

There's a hygge-like feel to the interiors here, accentuated by a neutral palette and natural materials.



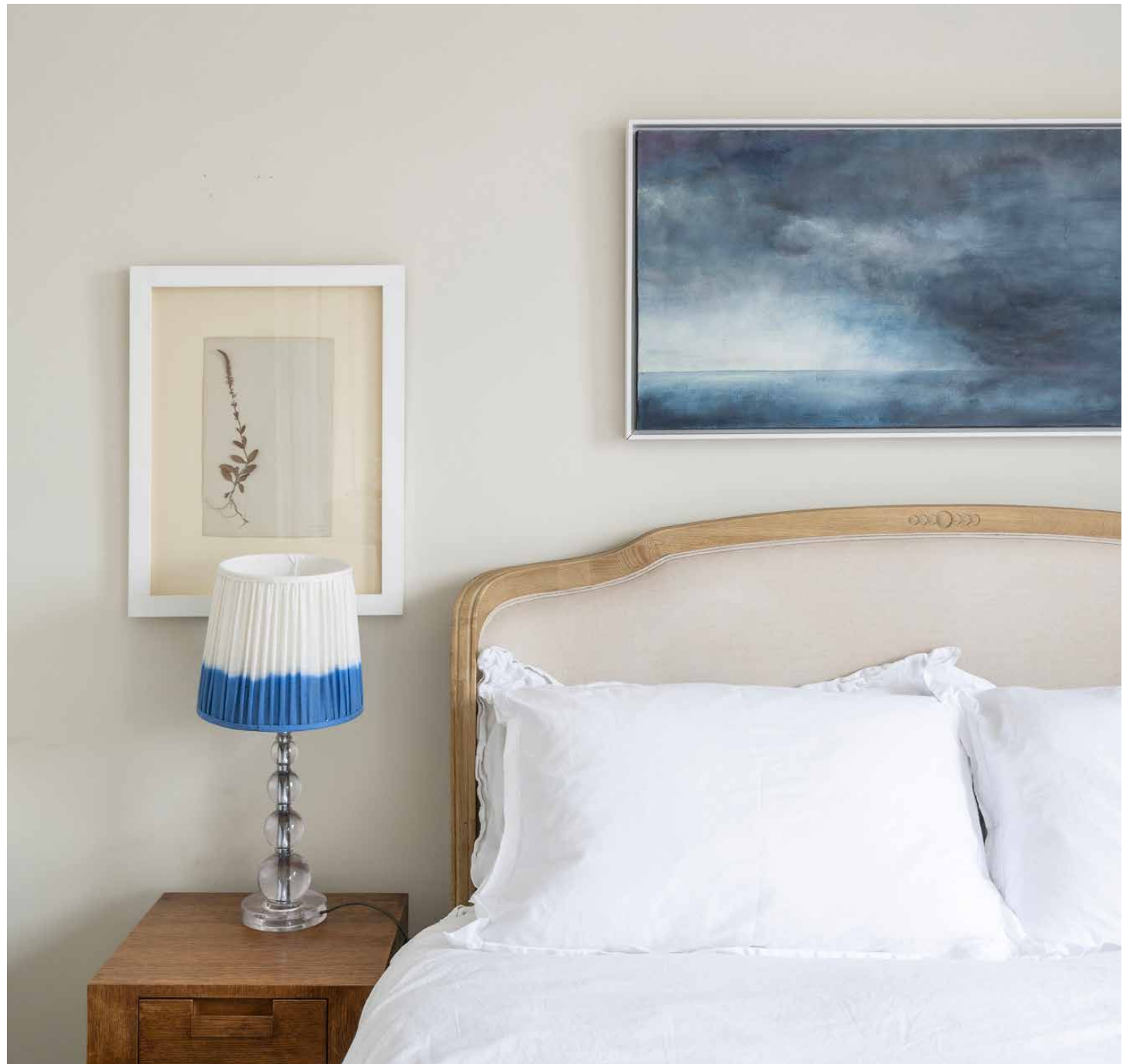






Take the stairs up the terrace – a perfect spot for morning coffee or an aperitif (note the outdoor lights that come in handy after dusk). Screened for privacy, it feels incredibly secluded and comes complete with an outdoor sofa and coffee table.

A final flight of stairs leads to the bedrooms, both of which are styled to sooth. Neutral tones, dark floorboards and wooden furniture add to the laid-back vibe. Fitted wardrobes and access out to a small balcony make the principal particularly inviting. Both bedrooms are served by a polished bathroom, finished with marble tiles and a deep bathtub.









LOCATION

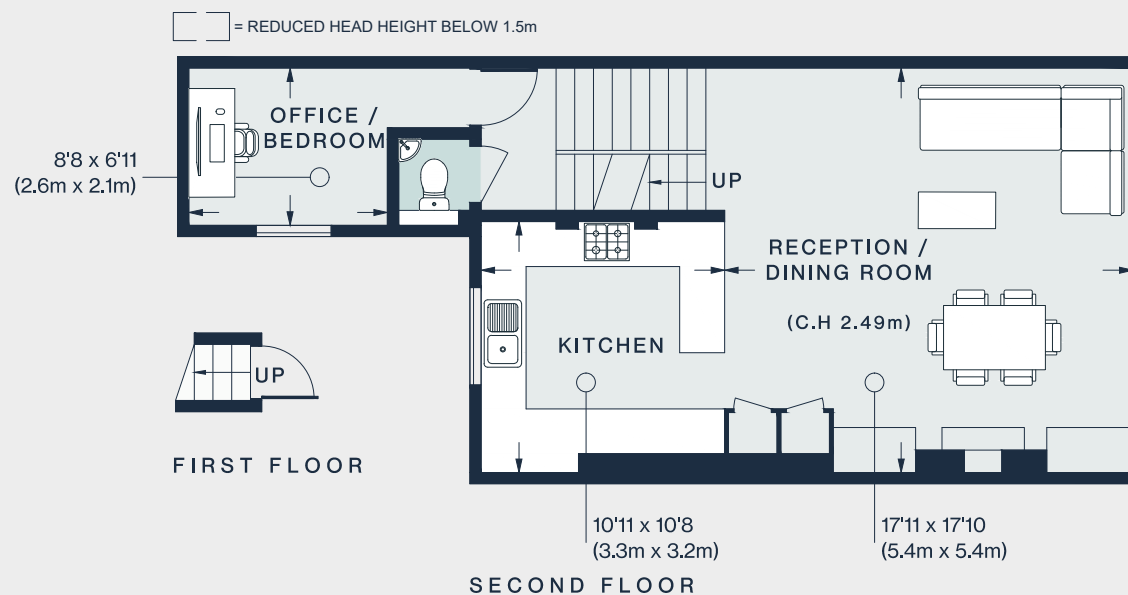
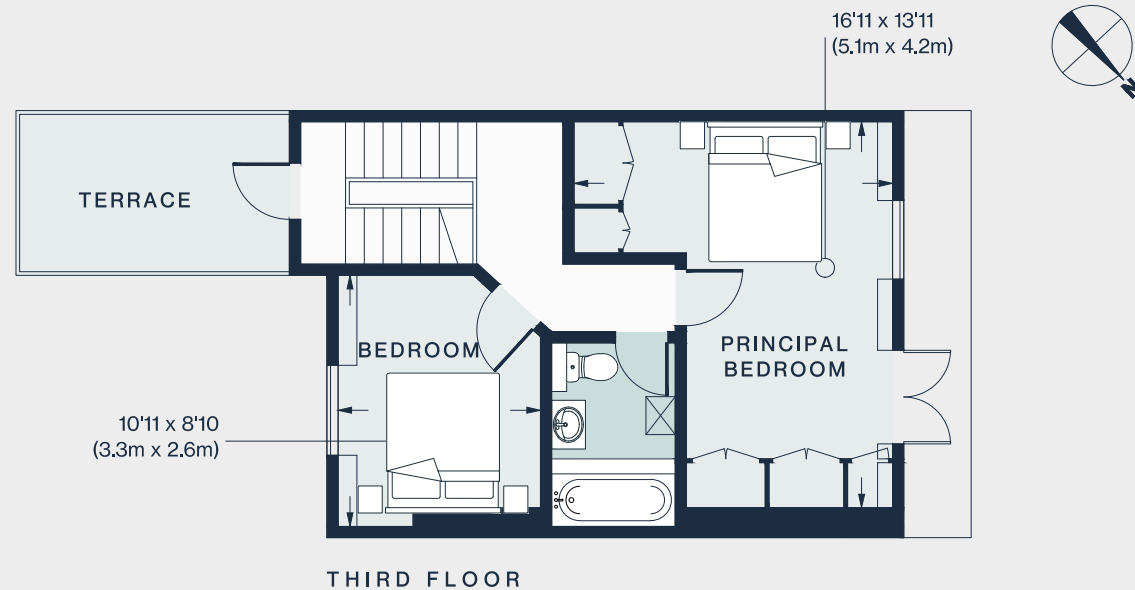
Notting Hill is your oyster here - with a renowned food scene, markets and independent shops all on the doorstep.

Nearby Portobello Road Market comes alive on the weekend so visit early like the locals do, picking up lunch to go from Buns from Home or It's Bagels. Keep up with your workout routine at Body Works West before stocking up on organic groceries at Daylesford or stopping for coffee at Granger & Co. Come evening, unwind with a drink at The Pelican then catch a film at The Electric Cinema. For special celebrations, Gold is just a short walk away.



PROPERTY HIGHLIGHTS

- Period apartment over three floors
- Scandinavian-inspired design
- Open-plan kitchen, dining and reception room
- Terrace
- Principal bedroom
- Guest bedroom
- Bathroom
- Cloakroom
- Study
- Walking distance to Portobello Road



Approx. Gross Internal Area = 1,063 sq ft / 98.8 sq m

Floor plans are for illustrative purposes only and not to scale. Compliant with RICS code of measuring practice.



Please don't hesitate to get in touch if you have any questions or require any further information.

hello@domusstay.com

+44 (0)20 8168 8880

Domus Stay provides the perfect combination of property, place and personal service for the world's most remarkable people. If you have any questions, or if we can help in any way, please contact us on the above number. Be it about a property you have, a property you want, dates to check or any special requirements you may need, we'd love a chat.

