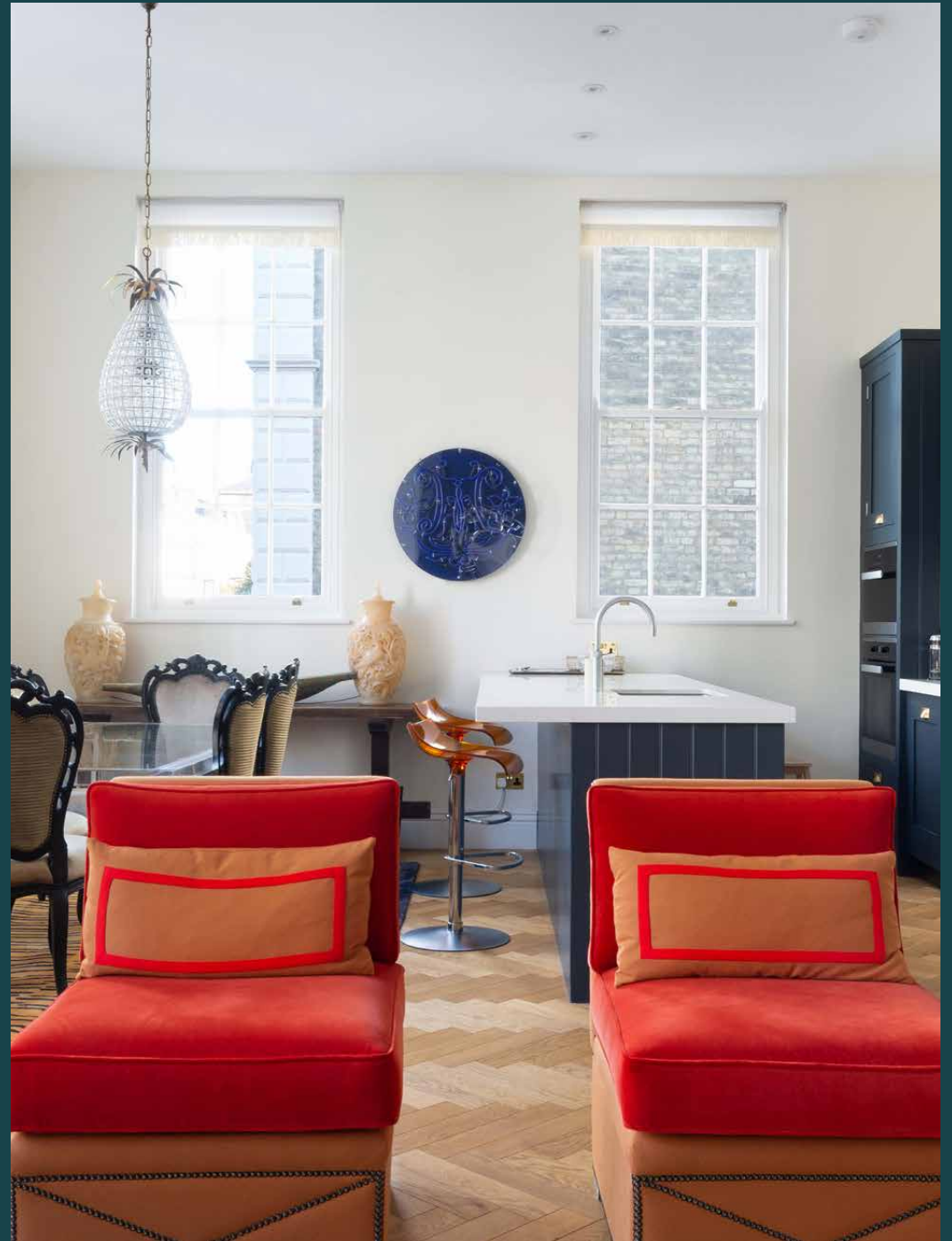


Westbourne Grove Mews

Notting Hill W11

2 Bedrooms, 1 Bathroom
For 4 guests





On a charming mews just off one of Notting Hill's most fashionable streets, this lateral, two-bedroom apartment is as stylish as its setting.

There's plenty that makes Westbourne Grove Mews stand out. Its location for one – within seconds of the front door, coffee shops, brunch spots and designer boutiques await. For another, its expansive, private terrace – a rarity in this part of town. Inside, the space on offer is just as generous and considered. Enter on the first floor to an inviting lateral kitchen, reception and dining room, brightened by a series of arched sash windows. Natural light is a defining feature, helping to accentuate the already impressive period proportions and high ceilings. Divided between areas for cooking, entertaining and relaxing, it's an ideal space to host.

Navy blue cabinetry, white worktops and a mirrored splashback elevated the kitchen area, which is equipped with integrated appliances and a double American-style fridge freezer. Pull up at a stool at the breakfast bar, or a seat at the Perspex dining table. An antique glass and brass chandelier takes care of the mood lighting. Each piece of furniture has been curated to inject character and personality to the space, from the Chesterfield-style sofas to the tangerine mid-century-style armchairs positioned in front of the fireplace.







There's a sense of drama to the principal bedroom suite, courtesy of dark floor-to-ceiling wall panelling and a velvet upholstered headboard. Natural light filters through the clerestory window, while designer wall lights add a warm glow come evening. The en suite bathroom is polished, with a large vanity and a walk-in shower wrapped in greyscale marble tiling. The guest bedroom is more minimalist in finish, with neutral walls, wooden floors and antique touches. It's served by a skylit en suite bathroom finished with contemporary white subway tiles.

The highlight, though, is the expansive, south-facing terrace. Bordered by planting that lends a sense of privacy, it's perfect for dining al fresco when the sun shines and comes complete with an eight-seater table and an outdoor sofa.









LOCATION

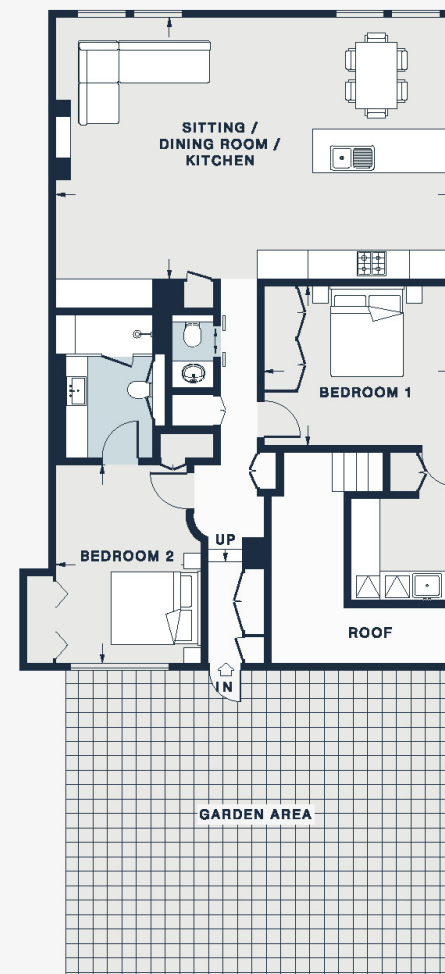
Running through the heart of Notting Hill, Westbourne Grove is home to upmarket boutiques, eateries and wellness studios.

Shop for local produce at Daylesford Organic Farm Shop or Planet Organic, then head for brunch at favourite local spots Beam, Granger & Co. and Sunday in Brooklyn. For invigorating workouts, there's Body Works West – leave it to our guest services team to sort exclusive passes and membership. Or it's a short walk to Hyde Park, where keen outdoor swimmers can take a dip in the Serpentine Lido. Come evening, catch a film at the Electric Cinema on Portobello Road after dinner at Dorian or a drink at The Walmer Castle.



PROPERTY HIGHLIGHTS

- First-floor lateral apartment
- Open-plan kitchen, dining and reception room
- Principal bedroom suite
- Guest bedroom
- Additional WC
- Private terrace
- Royal Borough of Kensington & Chelsea



SITTING / DINING ROOM / KITCHEN

27'2 x 17'10 (8.3m x 5.4m)

BEDROOM 1

13'7 x 9'9 (4.1m x 3.0m)

BEDROOM 2

13'1 x 10'11 (4.0m x 3.3m)

Approx. Gross Internal Area = 1,080 sq ft / 100.3 sq m

Floor plans are for illustrative purposes only and not to scale. Compliant with RICS code of measuring practice. Furniture layouts are indicative only. This property may be furnished, part-furnished or unfurnished. Please refer to your agent for details.



Please don't hesitate to get in touch if you have any questions or require any further information.

hello@domusstay.com

+44 (0)20 8168 8880

Domus Stay provides the perfect combination of property, place and personal service for the world's most remarkable people. If you have any questions, or if we can help in any way, please contact us on the above number. Be it about a property you have, a property you want, dates to check or any special requirements you may need, we'd love a chat.

