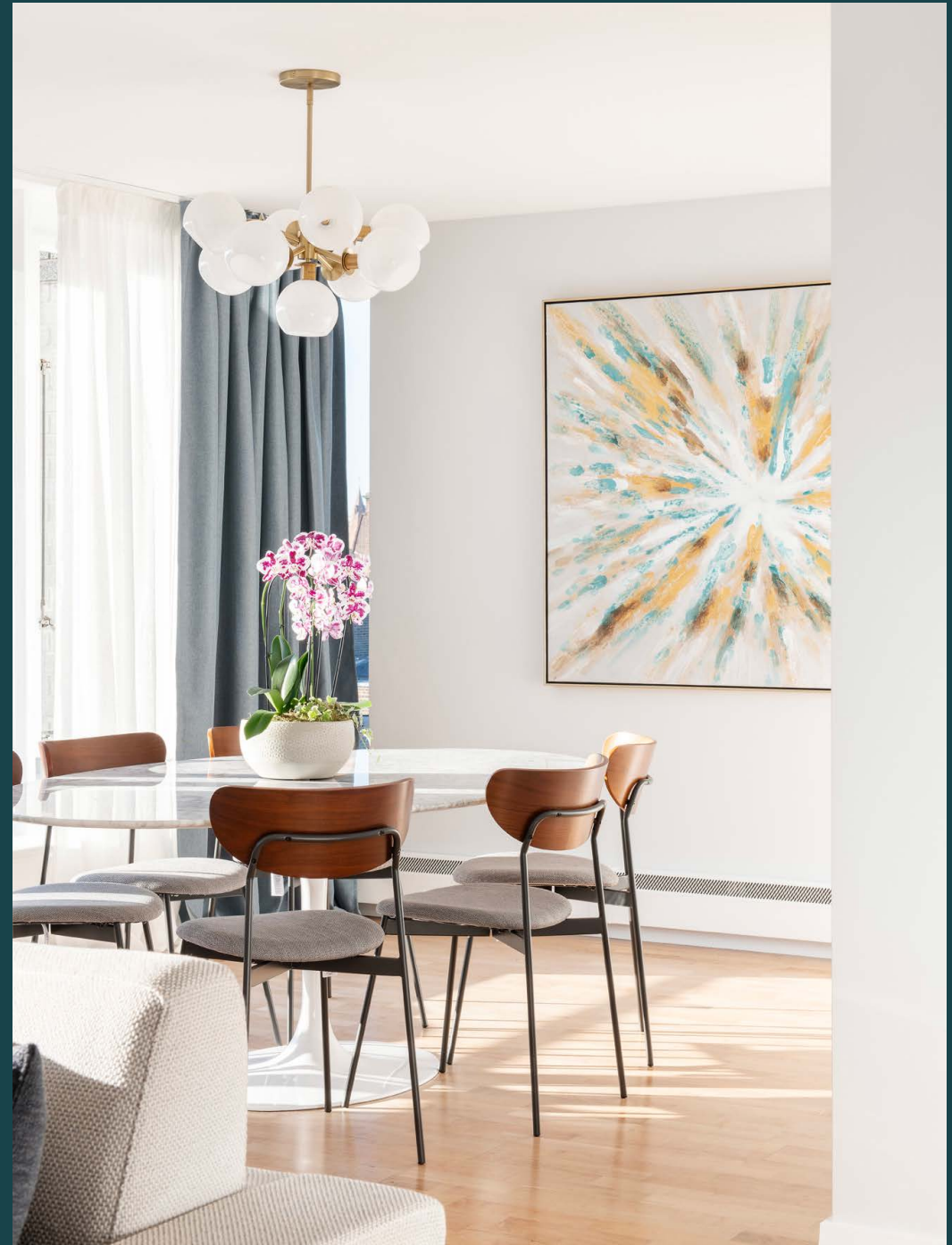


domus
stay.

Grosvenor Hill Court

Mayfair W1K

3 Bedrooms, 2 Bathrooms
For 6 guests





Timeless contemporary charm and cosmopolitan allure converge at this three-bedroom apartment in Mayfair.

In the heart of Mayfair, natural light and lateral living unfurls at Grosvenor Hill Court. Serving as both a gateway to the city centre and a sanctuary from its bustling energy, this design-led space is perfectly poised for exploring London's finest offerings.

A sleek exterior sets a refined tone, the elegant lobby – complete with 24hr porter – extending a welcoming invitation inside. Ascend the lift to the 7th floor, where glass doors cast light across tonal wooden flooring in an airy reception hall. Beyond double doors – a sophisticated setting for entertaining awaits in the open-plan living space. A pared-back palette directs attention to the room's pièce de résistance – a striking view framed by floor-to-ceiling glass windows.

Softly lit by natural light, a sumptuous cream sofa invites relaxation, while a staggered glass chandelier brings a warm ambiance to a marble-topped dining table. Concealed behind a discreet door to the rear of the room, slated-toned tiles distinguish a contemporary kitchen. Integrated appliances and clean lines lend a refined feel to the space, while bright light infuses culinary endeavours with an animated atmosphere.



A generous open-plan living space is envisaged for spending time with friends or family.



“

An abundance of natural light illuminates almost every inch of the interiors here, with expansive floor-to-ceiling windows producing spaces that calm.







As evening descends, unwind in the subdued hues of the generous principal bedroom suite. An expansive navy bed beckons, while light from a window spanning the length of the space effortlessly imparts a sense of calm. Take time to refresh in the sleek en suite, complete with a rainfall shower. Neutral tones and soft carpet lend an air of sophistication to two further bedrooms, each space thoroughly sun-lit courtesy of floor-to-ceiling windows. A spacious family bathroom, complete with a generous bathtub to soak away the day, serves these bedrooms.

For a breath of fresh air, step out to the sprawling communal roof terrace, to which the home benefits from access to.











CHANEL PARIS-DALLAS



LOCATION

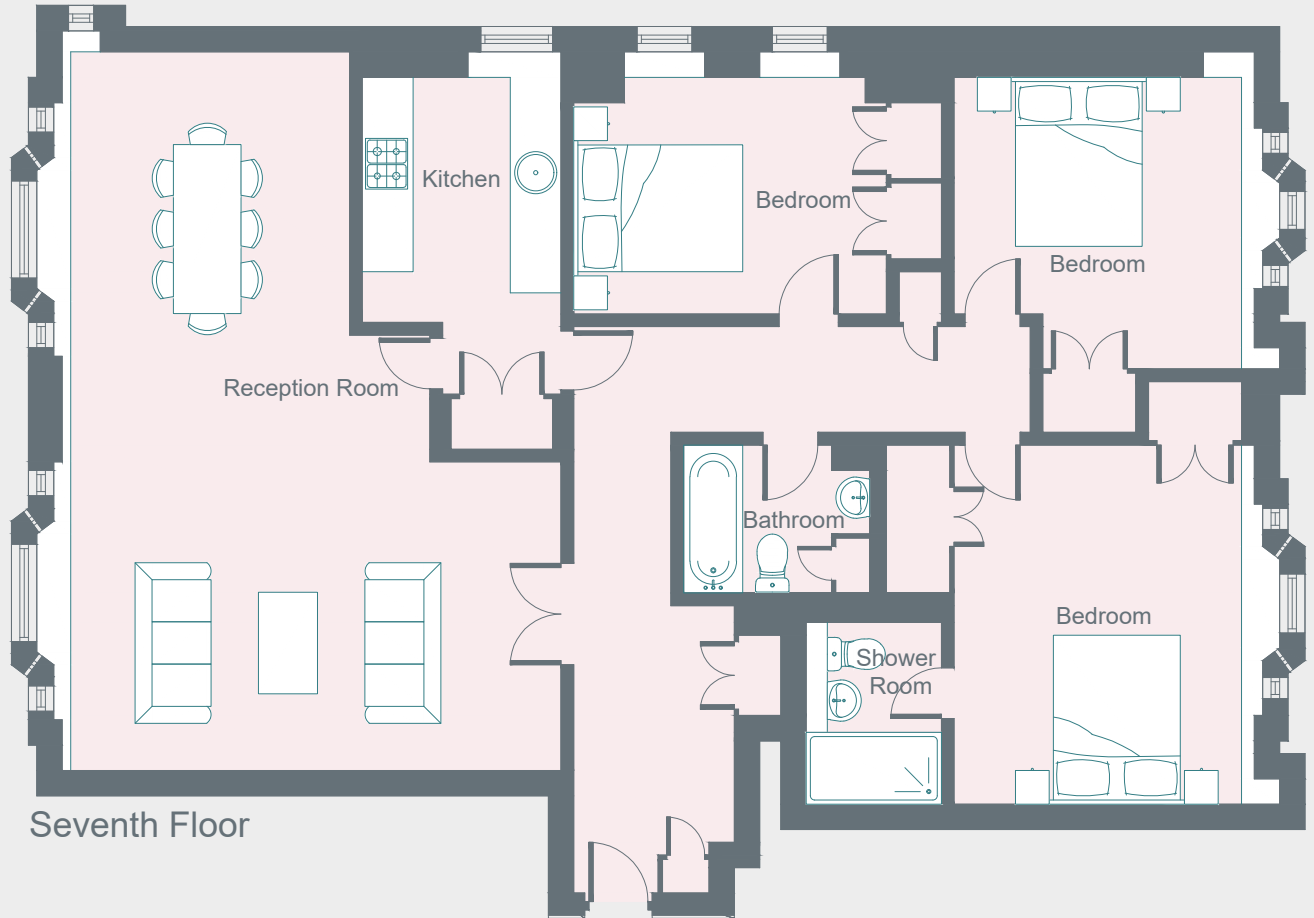
Set within the heart of Mayfair, Grosvenor Hill Court places you at the epicentre of London's finest offerings.

Just a stone's throw from Bond Street, numerous high-end boutiques are a mere walk away. For a relaxed afternoon out, head out Berkeley Square with a book. Celebrated for its culinary scene, a wealth of options are on hand for dining. Visit Scott's, famous for exquisite seafood and classic British dining, or try Cecconi's for Venetian-inspired delights. Stop by Annabel's or Mahiki for a more lively ambiance.



PROPERTY HIGHLIGHTS

- Open plan dining and reception room
- Contemporary kitchen
- Principal bedroom suite
- Two guest bedrooms
- Family bathroom
- Access to communal roof terrace





Please don't hesitate to get in touch if you have any questions or require any further information.

hello@domusstay.com

+44 (0)20 8168 8880

Domus Stay provides the perfect combination of property, place and personal service for the world's most remarkable people. If you have any questions, or if we can help in any way, please contact us on the above number. Be it about a property you have, a property you want, dates to check or any special requirements you may need, we'd love a chat.

