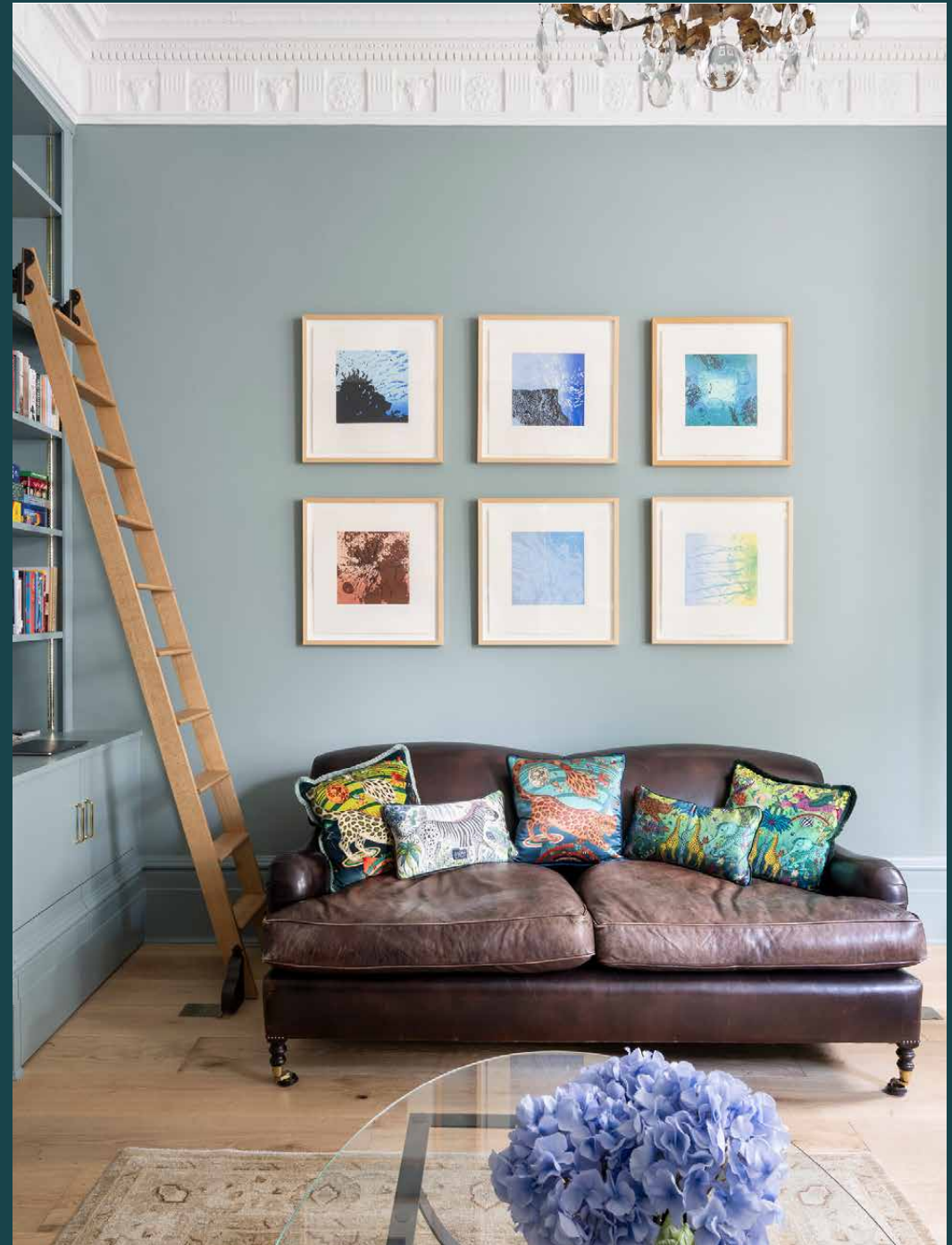


domus
stay.

Holland Park II

Holland Park W11

1 Bedroom, 1 Bathroom
For 2 guests





Moments from leafy Holland Park, this immaculate one-bedroom apartment is a mirror of its smart, sought-after location.

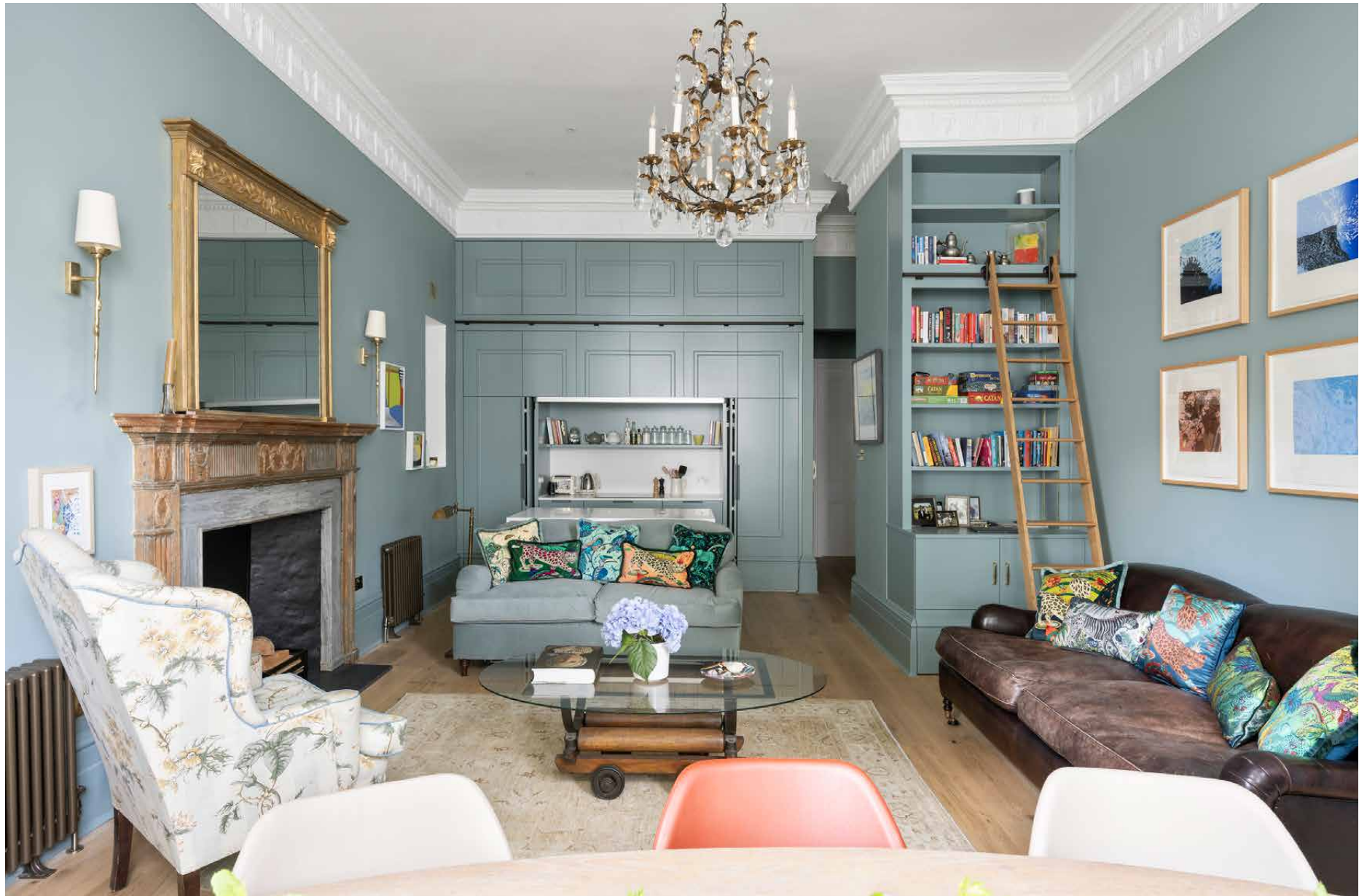
Quieter than its Notting Hill and Kensington neighbours, there's a peaceful feel to Holland Park. With the area's namesake green space just down the road, this apartment enjoys tree-lined surroundings.

Found on the first floor of an Italianate white-stucco villa, interior design by Gilly Foulds and Amanda Fisher of Completion is elegant – think chandeliers, gilded mirrors and bespoke cabinetry that feels at home within its period setting. Original features elevate the open-plan living room and kitchen; huge sash windows stretch from the floor to the cornicing-trimmed ceiling, while a carved wood fireplace provides a focal point.

This is a space that both looks good and functions well. Custom-made bookcases encompass a library (complete with a rolling ladder) and a mini bar area, while pocket doors conceal a streamlined but well-equipped kitchen. Enjoy the results of your culinary endeavours at the eight-seater dining table – or leave it with us to organise a private chef. Afterwards, unwind on the George Smith leather sofa among the colourful Emma J Shipley cushions.







Enjoy the results of your culinary endeavours at the eight-seater dining table – or leave it with us to organise a private chef.



“

Form meets function in the kitchen, subtly tucked away behind pocket doors.



Towards the back of the home, the bedroom has a green outlook. Fold back the shutters to leafy views; pale blue tones contribute to the calming atmosphere, and fitted wardrobes offer ample space for any retail therapy at The Village at Westfield London. The en suite bathroom means you can step straight from your bed to the walk-in shower. There's also an additional cloakroom off the living space for convenience.









LOCATION

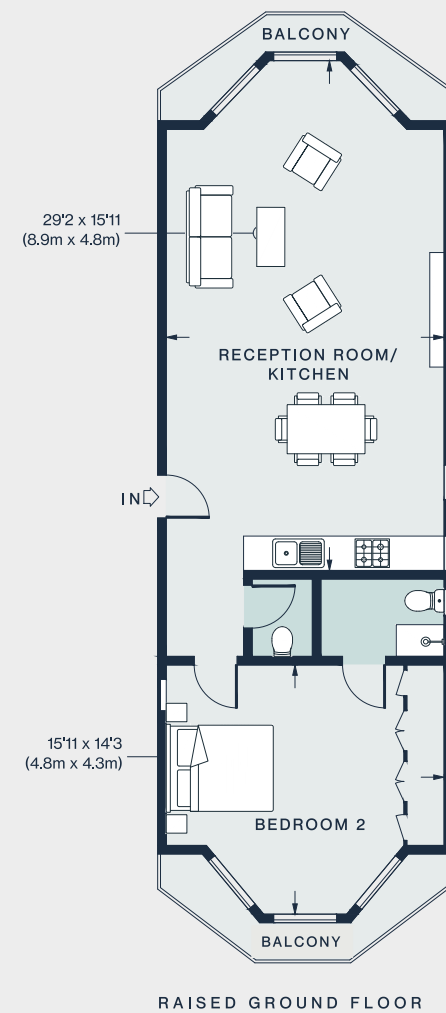
Alongside its namesake green space, Holland Park is celebrated for its laid-back village vibe and striking Victorian architecture.

Historically an enclave for creatives, Holland Park is still a magnet for culture. The home of Opera Holland Park, every summer Holland House hosts a season of unmissable al fresco performances. Independent businesses are also thriving here; stock the fridge at C Lidgate butchers, the wine chiller at Jeroboams and the bookshelves at Daunt books – all on the doorstep. When you want to stretch your legs, it takes just over 15 minutes to wander to Portobello Road, where eclectic stalls and vintage treasures await. A walk in the other direction brings you to the award-winning Design Museum, as well as the shops and delis of Kensington High Street. For dinner, the must-visit Julie's is close by.



PROPERTY HIGHLIGHTS

- Open-plan reception room and kitchen
- Period features throughout
- Envious Holland Park setting
- Bedroom suite with fitted storage
- Cloakroom
- Royal Borough of Kensington & Chelsea



Approx. Gross Internal Area = 729 sq ft / 67.7 sq m

Floor plans are for illustrative purposes only and not to scale. Compliant with RICS code of measuring practice.



Please don't hesitate to get in touch if you have any questions or require any further information.

hello@domusstay.com

+44 (0)20 8168 8880

Domus Stay provides the perfect combination of property, place and personal service for the world's most remarkable people. If you have any questions, or if we can help in any way, please contact us on the above number. Be it about a property you have, a property you want, dates to check or any special requirements you may need, we'd love a chat.

