

domus  
stay.

---

## Portsea Place

Hyde Park W2

4 Bedrooms, 2 Bathrooms  
For 8 guests

---





This richly textured, interior-designed four-bedroom home is caught between two of London's most famed landmarks: Hyde Park and Marble Arch.

Refined eclecticism is the order of the day in this four-bedroom home, crafted with passion by the former homeowner. There's a sense of intrigue to every room across the four spacious storeys, drawn with mixtures of contemporary and antique furniture, bold patterns and tactile textures, plus a host of engaging artwork.

The home's double-fronted, stucco façade makes a handsome first impression. Beyond, the historic architecture has been reworked with unique flair. An archway leads into the open-plan dining room and study. An elegant jacquard-style pattern spans the walls and curtains that frame the windows at either end of the space. To one side, a smart wooden dining table is paired with perspect chairs. To the other, a retro desk cabinet offers a bright pop of colour. Beyond a set of French doors, there's a private patio garden. Tall black trellises make for a punchy contrast to the green planting, while affording a sense of privacy to the al fresco space. The shaker-style kitchen is also located on this story: it's a calming setting with whitewashed metro tiling and a marble-topped breakfast bar.





Social life continues on the first floor with the voluminous double reception room. A pair of full-height sash windows infuse the space with sunlight, while heritage grandeur is introduced through olive-green walls, a marble fireplace surround, crystal chandelier and antique sculptures. Completing this floor is a guest bedroom, decorated with pinstripe walls and full-height curtains that can be closed to conceal the sleeping area.

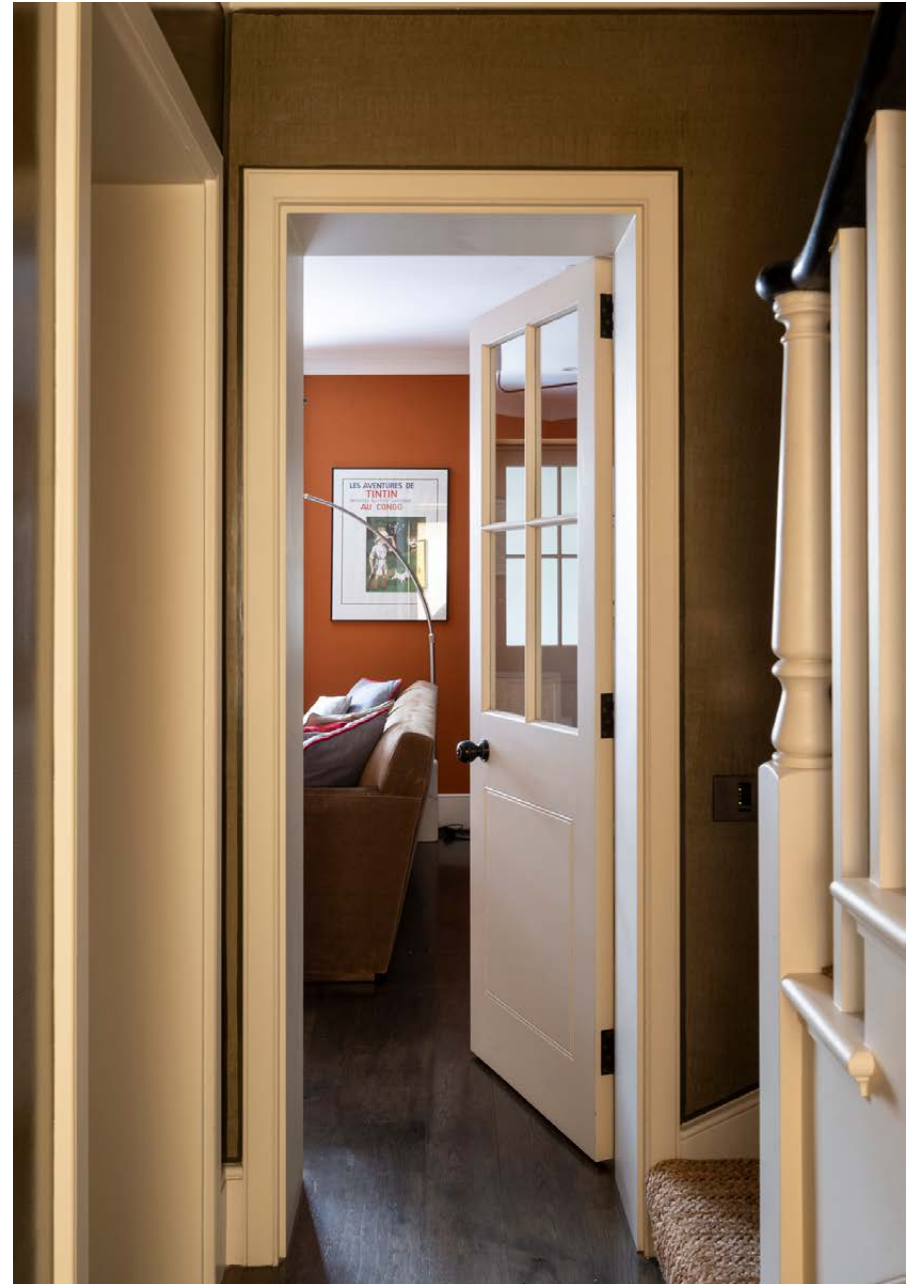




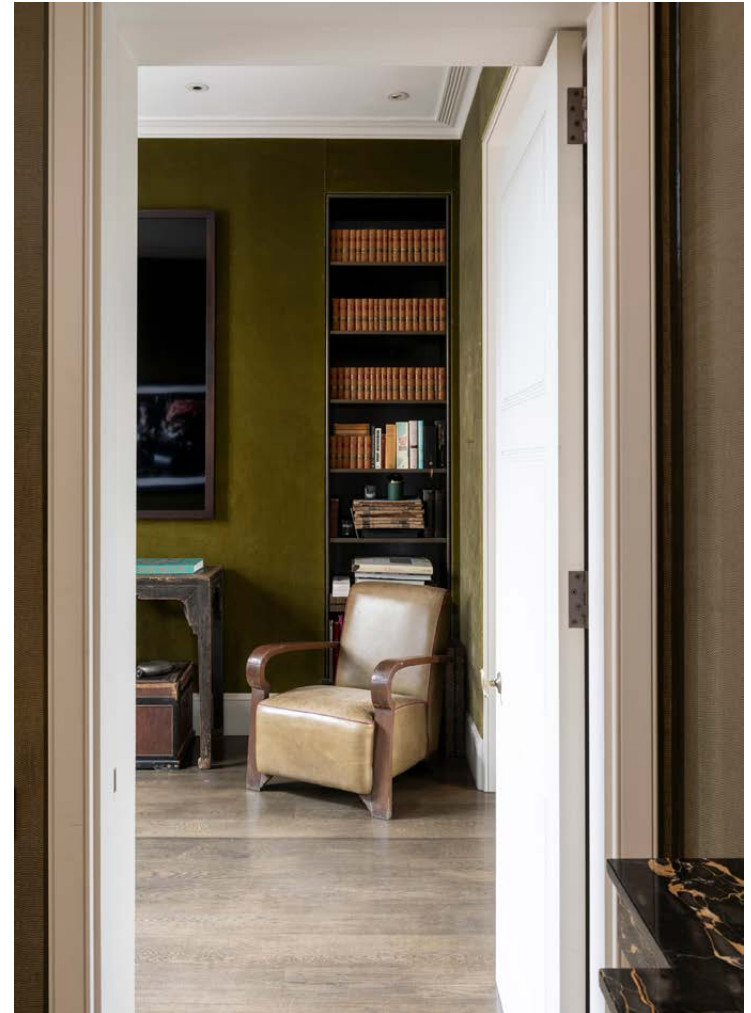




On the lower-ground floor, the media room is modish with burnt-orange walls, mid-century style seating and a television set for cosy nights in.









The principal bedroom suite takes the second storey. Dark wood floors and pale walls lend attention to the four-poster bed, while a row of wardrobes are set to store new-found retail purchases. The en suite bathroom is a masterpiece of marble; the floors, dual vanity and rainfall shower are all wrapped in the smooth veined stone. From the bedroom, you can access a private terrace that overlooks the peaceful street.



Elegant interior style blends cultures and eras to harmonious effect. Be it the grandiose reception room, clean-line guest bedrooms or wallpapered WC, no corner of Portsea Place is left unadorned.

“

There's a sense of intrigue to every room across the four spacious storeys, drawn with mixtures of contemporary and antique furniture.





Two sunlit guest bedrooms are also located on the lower ground floor: both are crafted with whitewashed tongue-and-groove panelling and sisal carpets, adding a nautical edge to their interiors. A family bathroom serves these rooms — an opulent space with brown marble walls and a bathtub.

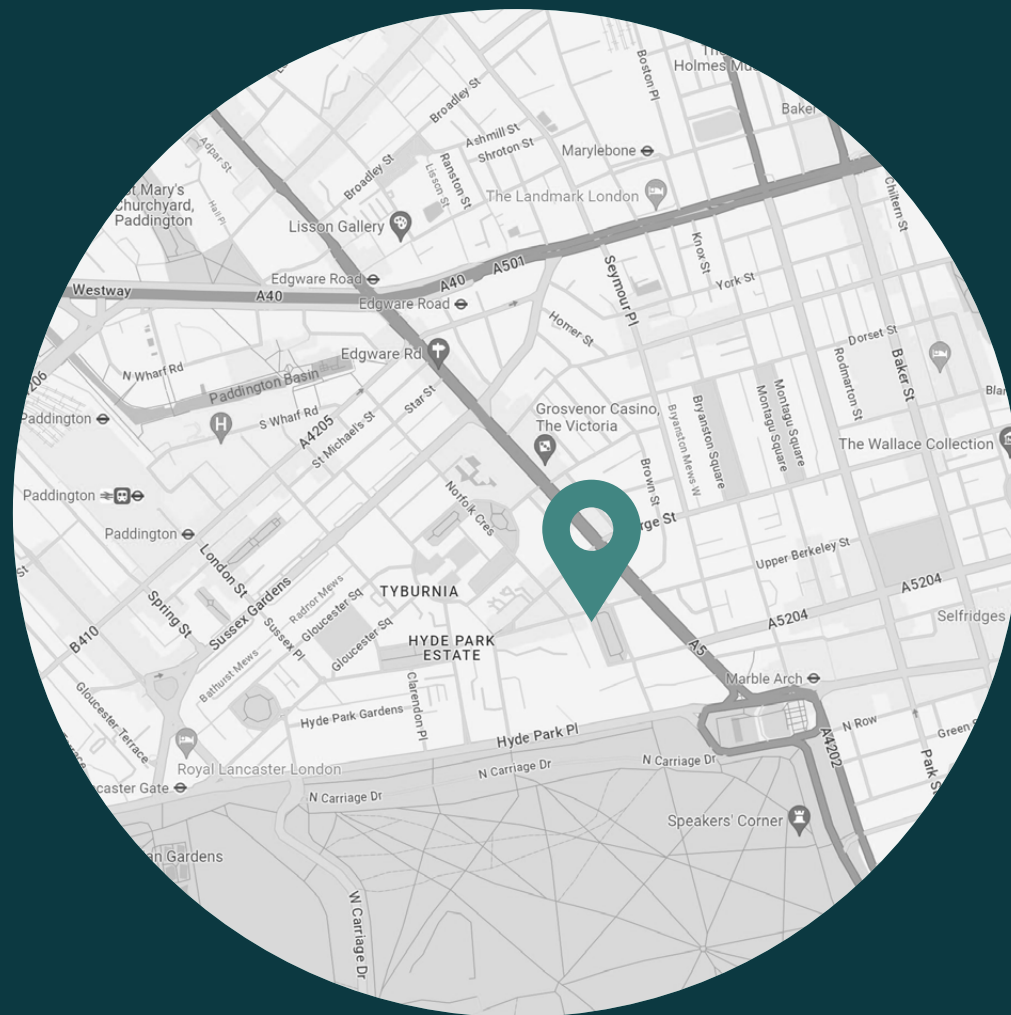




## LOCATION

A springboard to the capital at its most vibrant; Portsea Place's peaceful character belies its fantastic proximity to London's most famed hotspots.

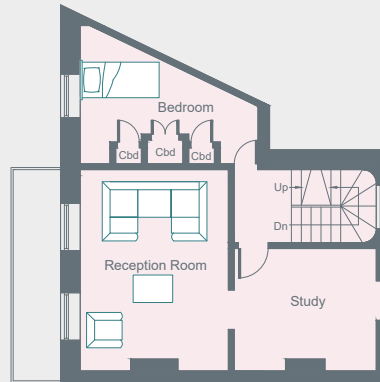
It's a ten-minute walk to Marble Arch, marking the start of Oxford Street with its world-class retail stores and links to the West End's vast cultural offerings. The varied range of eateries and bars across Fitzrovia and Soho will keep epicures satisfied from morning to night. For long walks, warm-weather boating, horse riding and outdoor swimming, Hyde Park is close by to cater for all al fresco activities. The home is brilliantly connected by public transport, including Paddington station which provides fast connections to Heathrow airport.



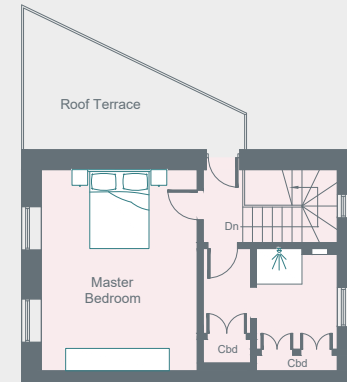


## PROPERTY HIGHLIGHTS

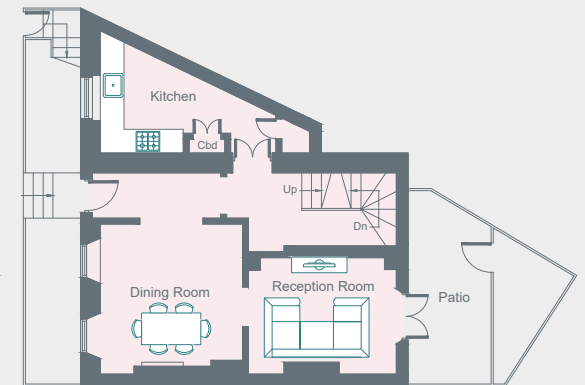
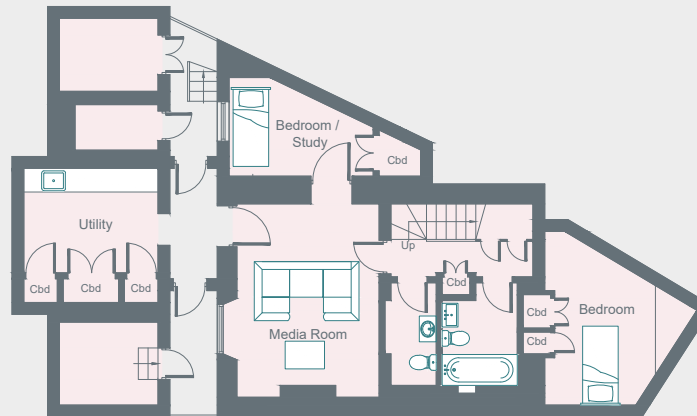
- Double-fronted, end of terrace Georgian property
- Contemporary kitchen
- Open-plan dining room and library
- Double reception room
- Media room
- Principal bedroom suite with roof terrace
- Three guest bedrooms
- Family bathroom
- Additional WC
- Study area
- Private patio garden
- City of Westminster



First Floor



Second Floor



# domus stay.

Please don't hesitate to get in touch if you have any questions or require any further information.

[hello@domusstay.com](mailto:hello@domusstay.com)

+44 (0)20 8168 8880

Domus Stay provides the perfect combination of property, place and personal service for the world's most remarkable people. If you have any questions, or if we can help in any way, please contact us on the above number. Be it about a property you have, a property you want, dates to check or any special requirements you may need, we'd love a chat.

