

domus  
stay.

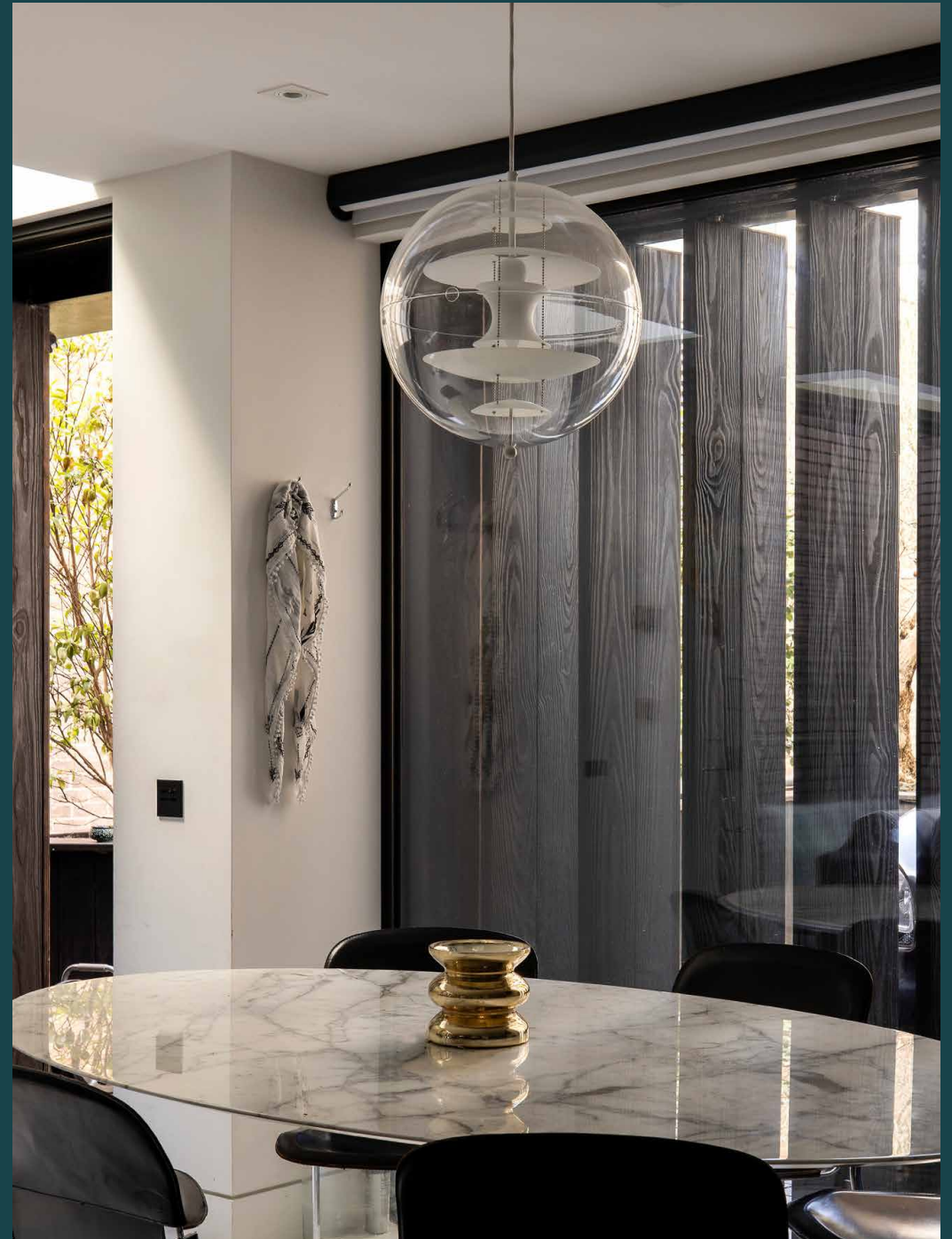
---

# Hyde Park Crescent

Bayswater W2

3 Bedrooms, 3 Bathrooms  
For 6 guests

---





**An inventive three-bedroom pied-à-terre in Bayswater. This secluded urban retreat is a haven of considered design elevated by choice artwork.**

Three minutes from Hyde Park, charred wood accents make for a tactile welcome to this clean-lined, contemporary home masterminded by Belsize Arc. Entering on the ground floor, this level balances the three functions of cooking, dining and relaxing. Expanses of glass, and two skylights overhead, pour daylight into the space.

Motoring-themed artwork pops against white walls while a peninsula kitchen places textures of dark, white-veined stone with minimalistic matte cabinetry. Prepare a meal using integrated appliances then tuck in at the marble dining table. Bespoke joinery provides a navy blue backdrop for an array of books and ornaments in the living area. Open up a tomb, put on a playlist via the integrated speakers and sink into one of the two plush sofas.





smart

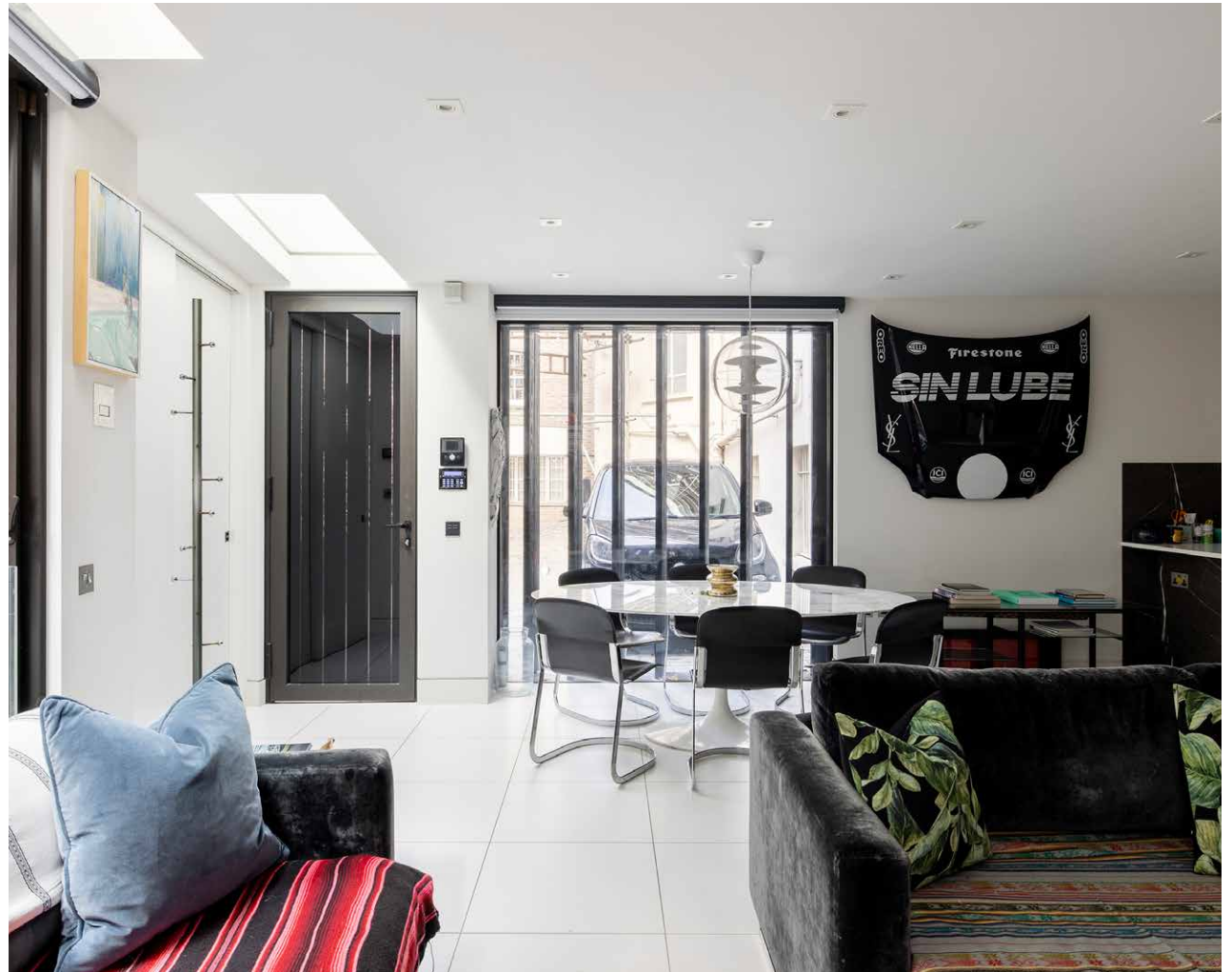
www.smartcar-hire.com





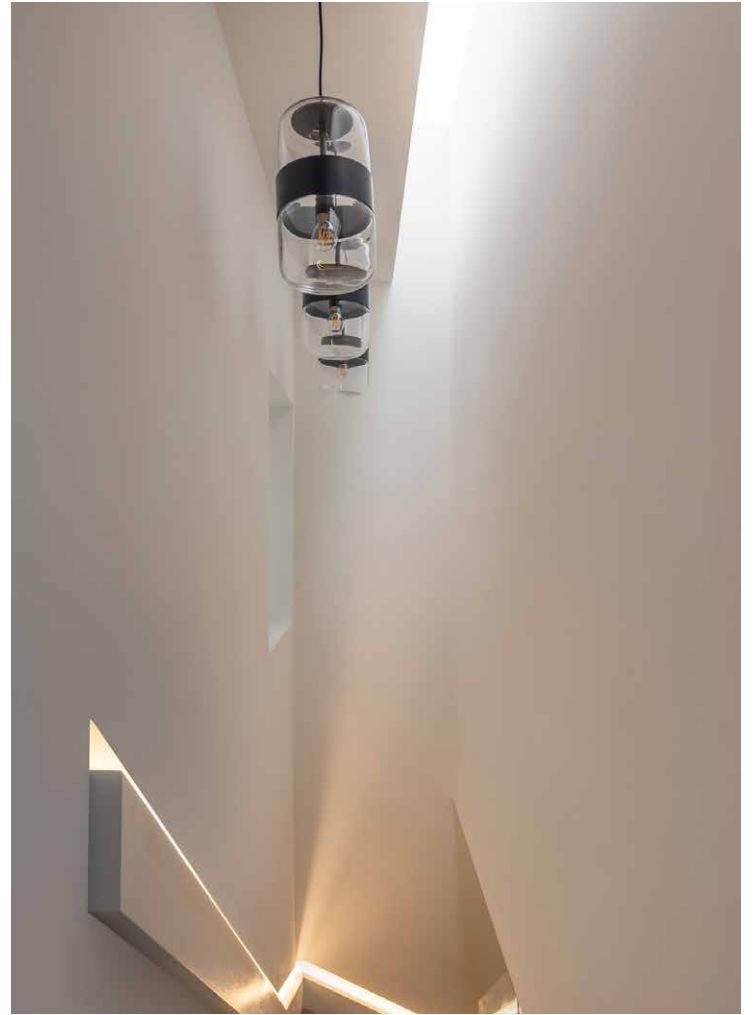
“

Modern design principles meet timeless materials in the spacious reception room.







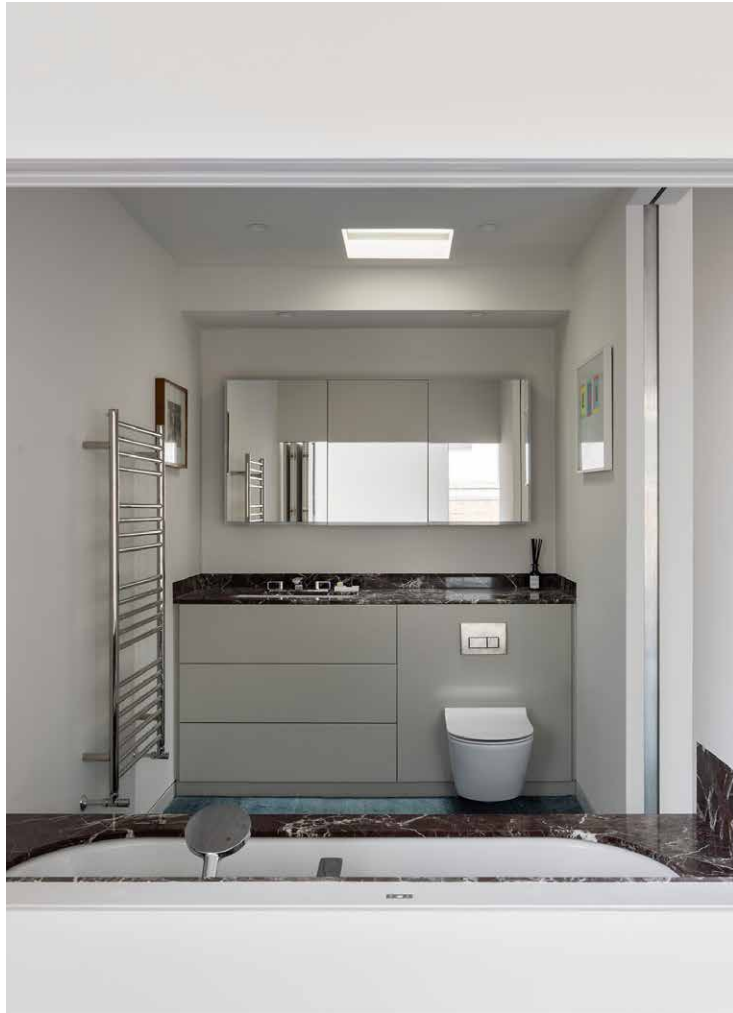




A shadow gap forms a pared-back bannister, with recessed lighting guiding the way to the upper levels. The spacious principal bedroom suite combines natural light and restrained design. A sunlit corner of the room features a chaise lounge finished in red leather, perfect for moments of quiet contemplation. The en suite bathroom features chrome fittings, integrated drawers and a bath finished in striking black marble. Bi-folding doors slide away to create an immediate connection between bedroom and bathroom. Two further bedrooms draw together plush carpet, neutral tones and fitted storage. One further bathroom features modern fittings, oversized tiles and a frameless walk-in shower.















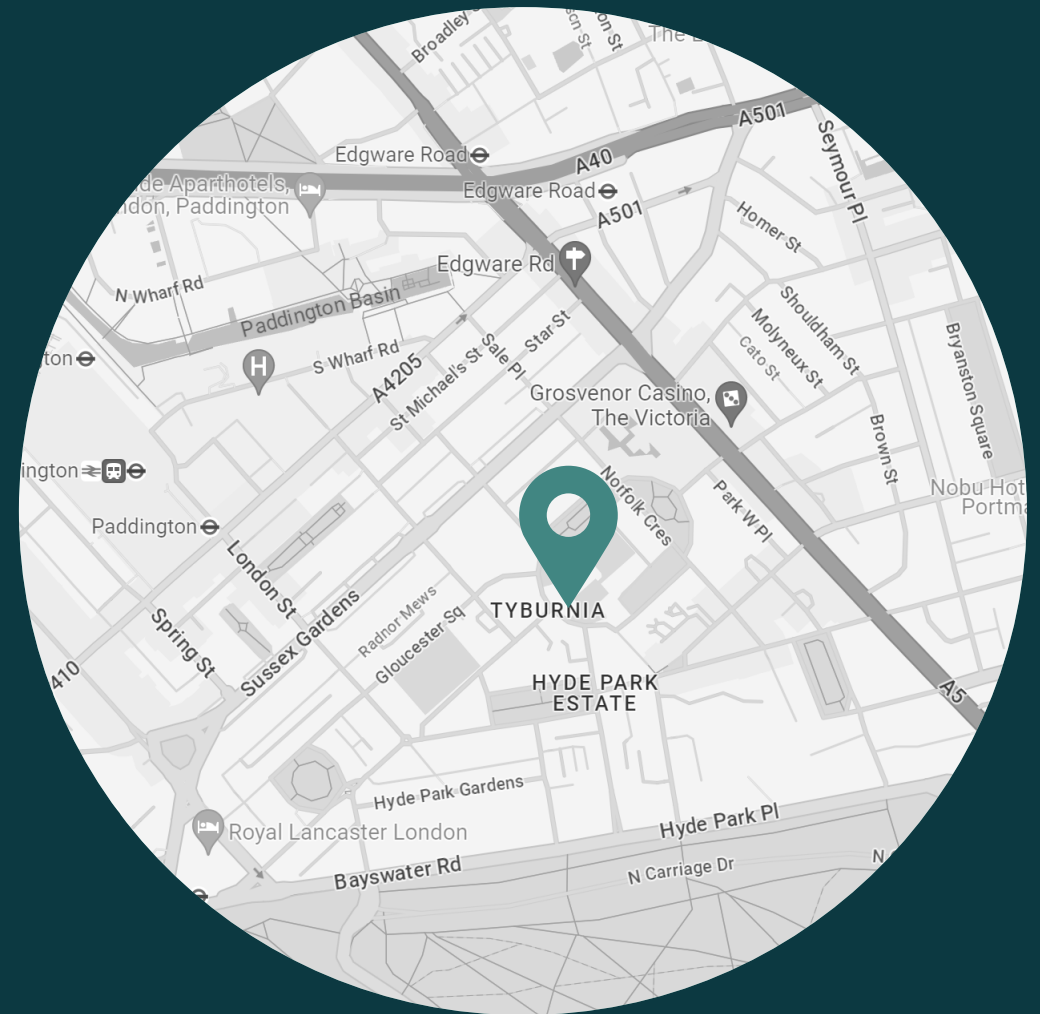




## LOCATION

Home to tree-lined streets and period architecture, Bayswater offers easy access to the restaurants and boutiques of Westbourne Grove.

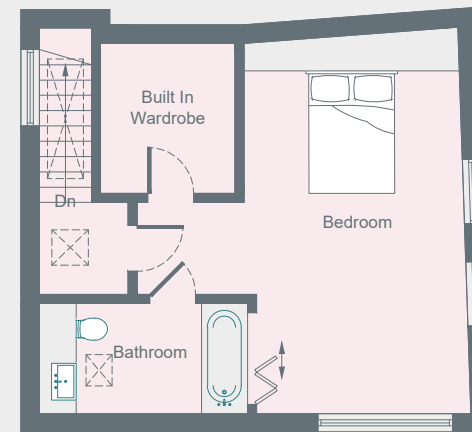
The tranquil lawns and manicured gardens of Hyde Park – just three minutes away. The West End, London's thriving theatre district, is also within strolling distance. Indulge in a Michelin-starred meal at Le Gavroche or, further afield, tuck into seafood and oysters at Scott's.



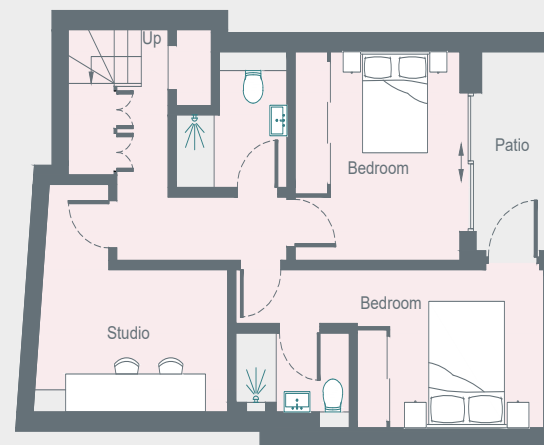


### PROPERTY HIGHLIGHTS

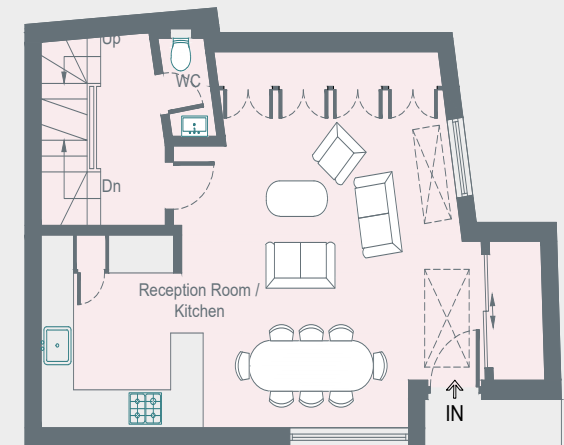
- Open-plan kitchen and reception room
- Expansive principal bedroom suite
- Two further bedrooms
- One further bathroom
- Study area
- Terrace
- Gated entrance
- City of Westminster



First Floor



Lower Ground Floor



Ground Floor



Please don't hesitate to get in touch if you have any questions or require any further information.

---

[hello@domusstay.com](mailto:hello@domusstay.com)

+44 (0)20 8168 8880

Domus Stay provides the perfect combination of property, place and personal service for the world's most remarkable people. If you have any questions, or if we can help in any way, please contact us on the above number. Be it about a property you have, a property you want, dates to check or any special requirements you may need, we'd love a chat.

