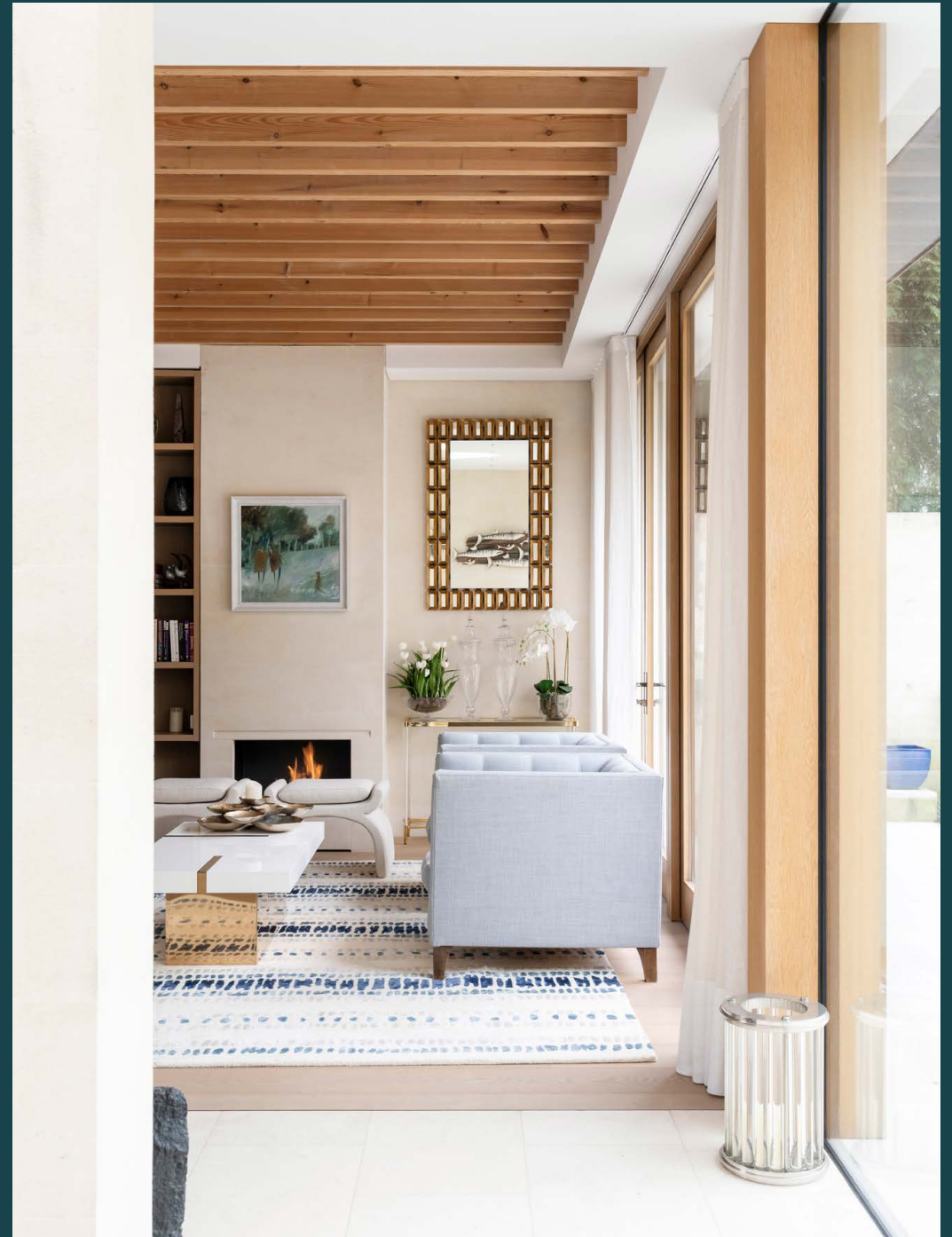


domus
stay.

The Lodge

Fulham SW6

5 Bedrooms, 5 Bathrooms
For 10 guests





Neo-gothic references meet contemporary design principles at this award-winning five-bedroom home in Fulham.

Set at the entrance of Fulham Cemetery, a bold reimagining of a 19th-century lodge plays out across three floors. A traditional exterior, with rustic brickwork and a steeply pitched roof, belies the modern masterpiece that lies within.

Entering on the ground floor, the home has been reborn as an urban retreat with ecclesiastic volumes. Designed by Simon Gill Architects and featured on *Grand Designs*, old and new elements blend seamlessly via considered materials and poised finishes.

The open-plan kitchen and dining room drinks in garden views via an expanse of glazing. A waterfall island delineates the space between cooking and dining areas. The bespoke kitchen draws together dark wood finishes, a Quooker tap and integrated Miele appliances. Prepare a meal on the Elica induction hob then dine at the stylish breakfast bar.

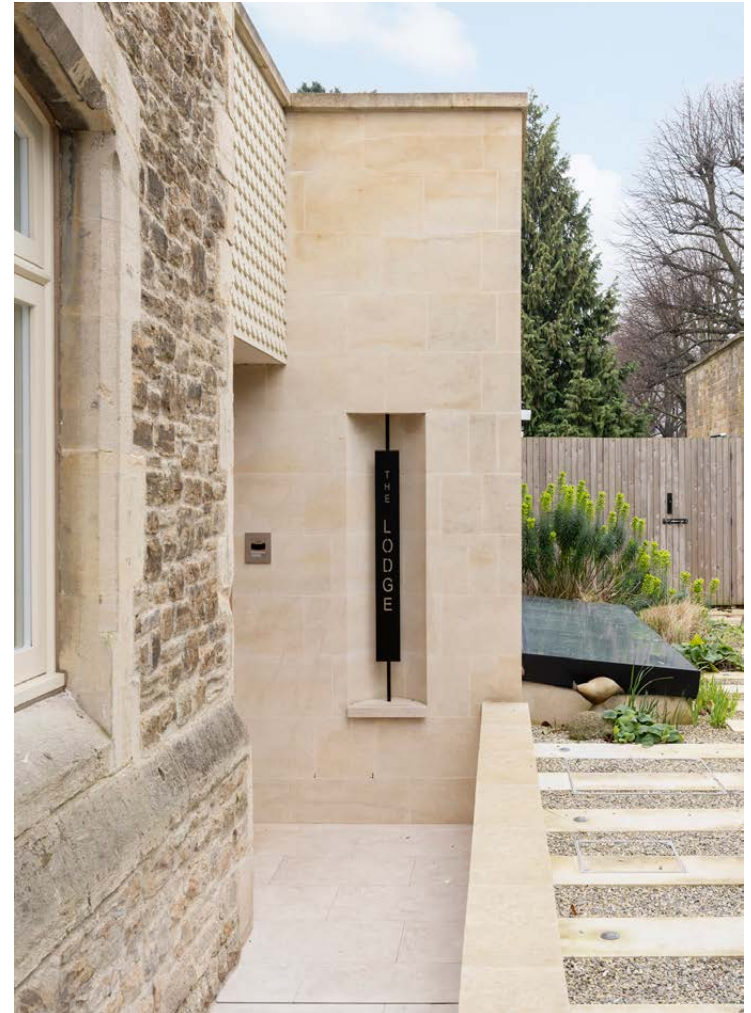
In the dining area, a table with seating for 10 is crowned with sculptural chandeliers and illuminated by a transom skylight. A raised snug features comforting, wood-wrapped walls. Integrated seating, an open fire and a sightline through to the front door make it an ideal spot for movie marathons.



With wood flooring underfoot and exposed beams overhead, the garden room is a warm, convivial space perfect for family get-togethers. In the winter, put on the fire. In the summer, slide open the south-facing glazing, step into the walled garden and light the barbecue. This space is completely private, utterly idyllic and provides direct access to the cemetery. Alternatively, embrace nature in the separate flower garden and enjoy the gently babbling water feature.



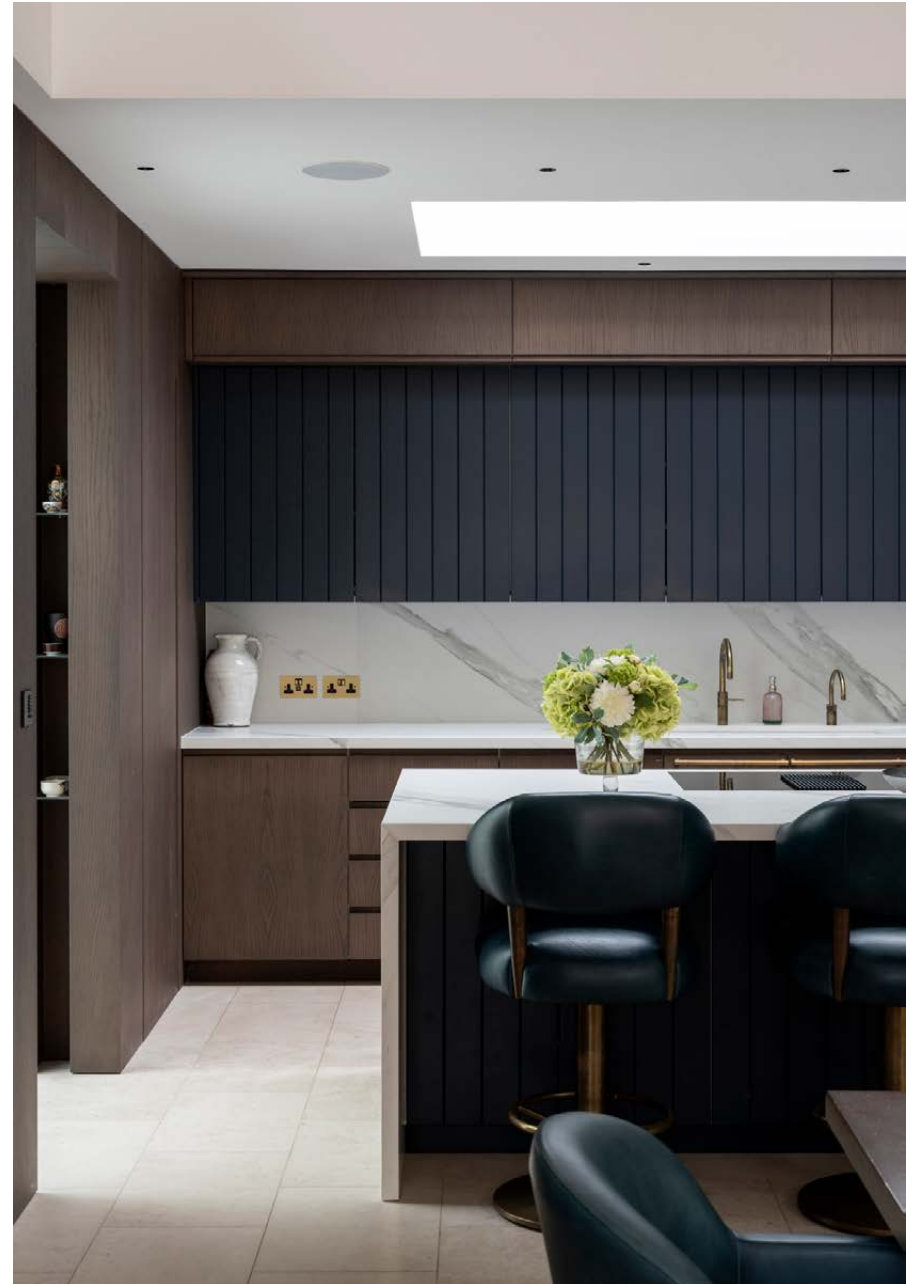








Throughout the home, voids and skylights imbue spaces with natural light.





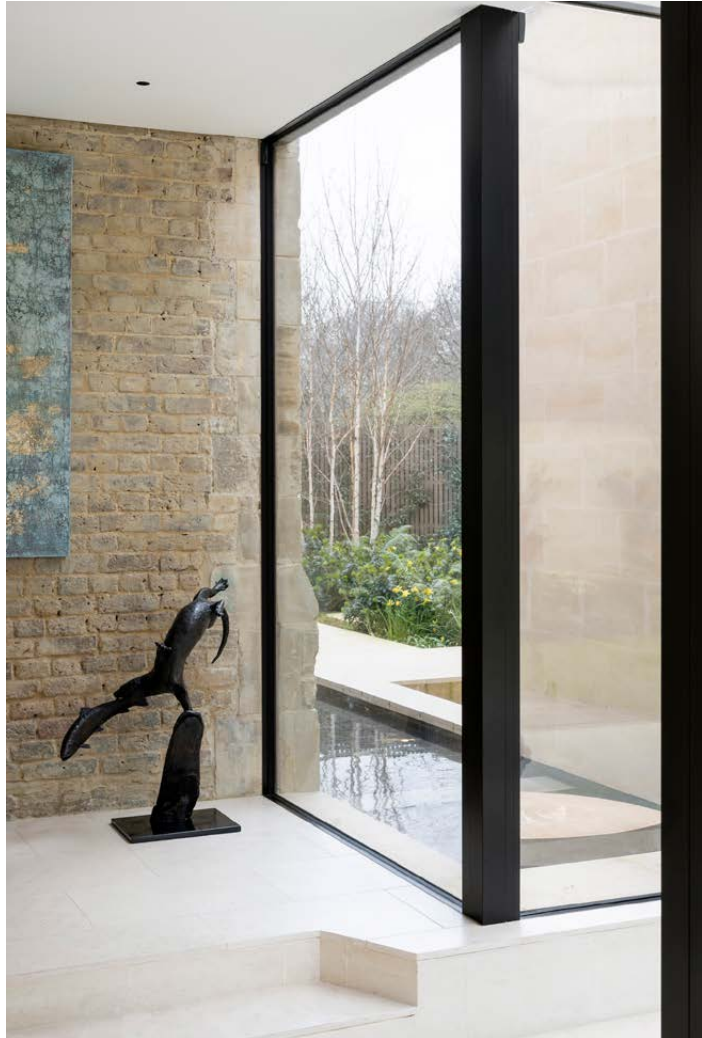


Original brickwork forms a traditional accent, contrasting the contemporary palette. From the garden, the project's use of Bath stone – to match the original building – can be appreciated.

“

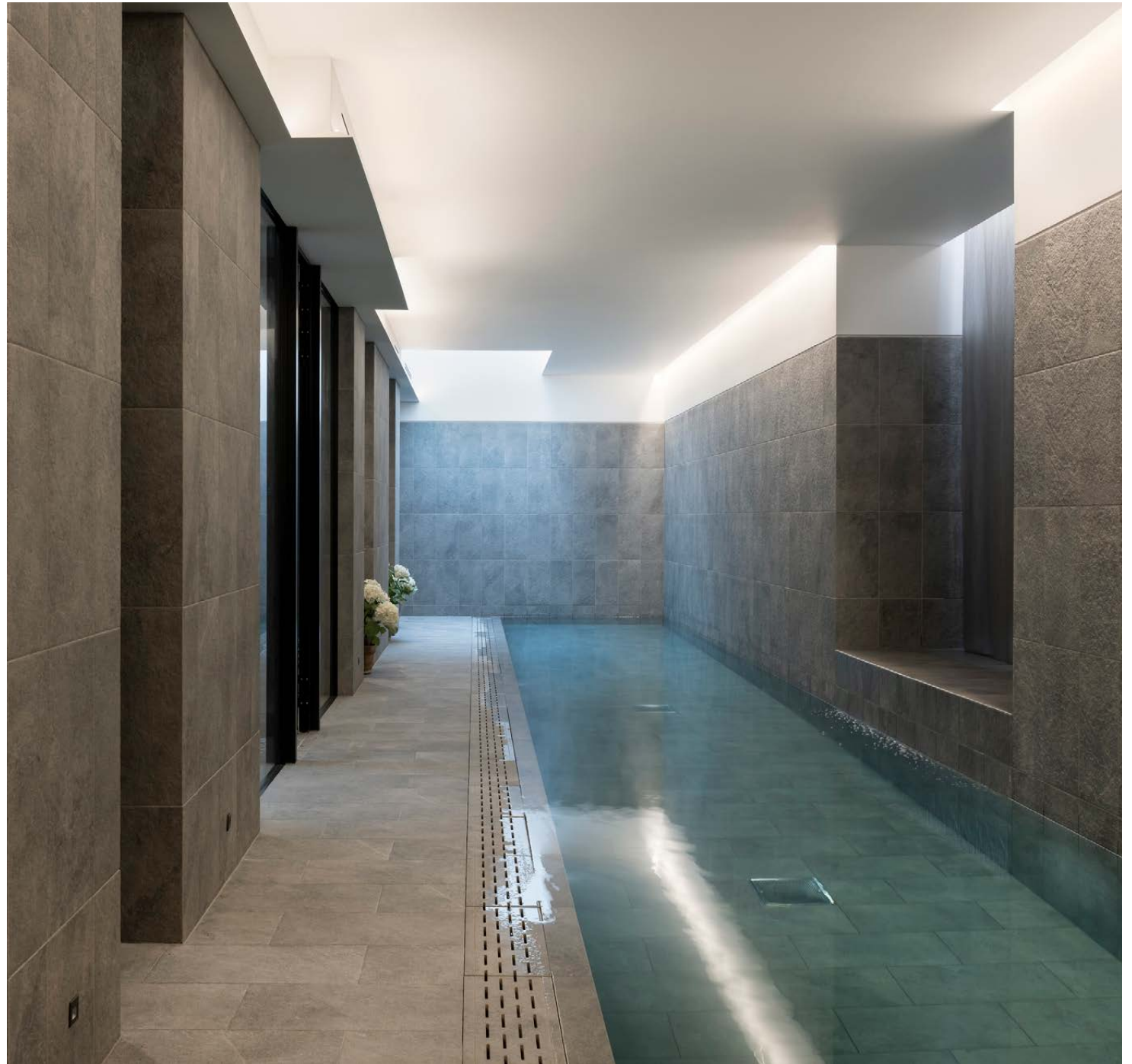
Old and new elements blend seamlessly via considered materials and poised finishes

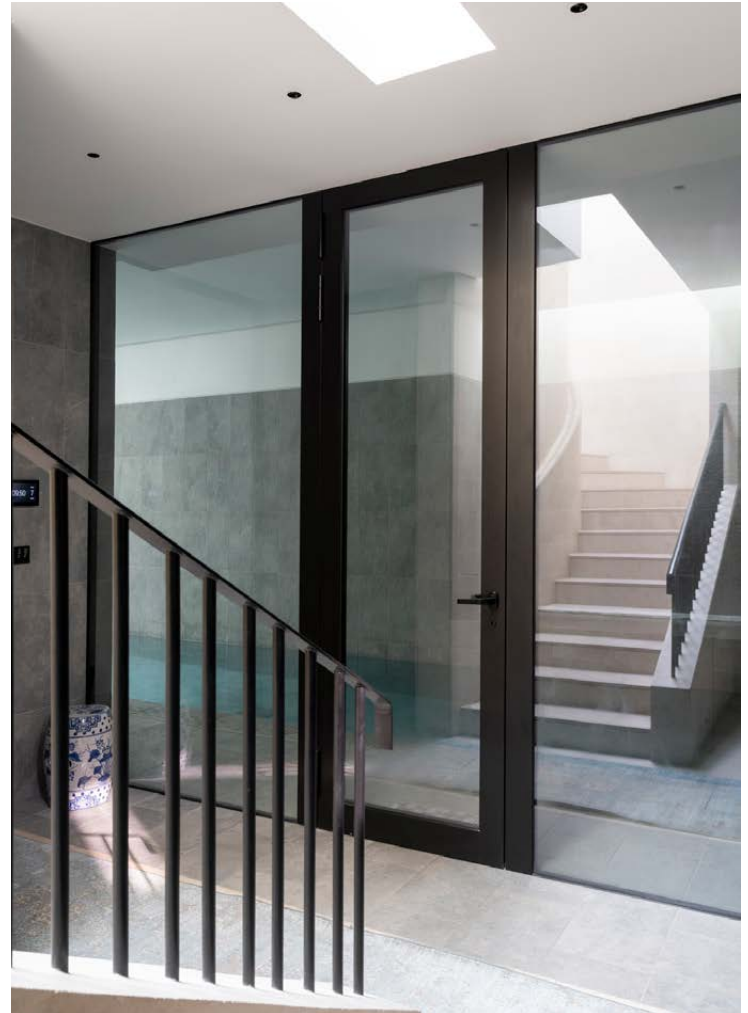




At ground level, a curving staircase leads down to the lower ground floor. Every space on this level benefits from natural light, including the impressive 17-metre swimming pool. This climate-controlled space also draws together a shower room and a sizable sauna.

A games room features an air hockey table and a bar with antique glass. Custom artwork was created by Simon Gill. This space draws in light from a patio which leads directly up to the garden. In addition to utility areas, the lower-ground floor draws together two further bedroom suites and one self-contained studio. A fifth bedroom takes the ground floor and is served by a family bathroom.









Dominating the first floor, the principal bedroom suite is a generous space with thoughtful design details and indulgent materials. Matching the bedroom, the sky-lit walk-in dressing room features a vaulted ceiling and exposed beams. The en suite bathroom features stone flooring, a dual vanity and a freestanding bathtub. A separate shower and sanitary area enjoys a walk-in rainfall shower.



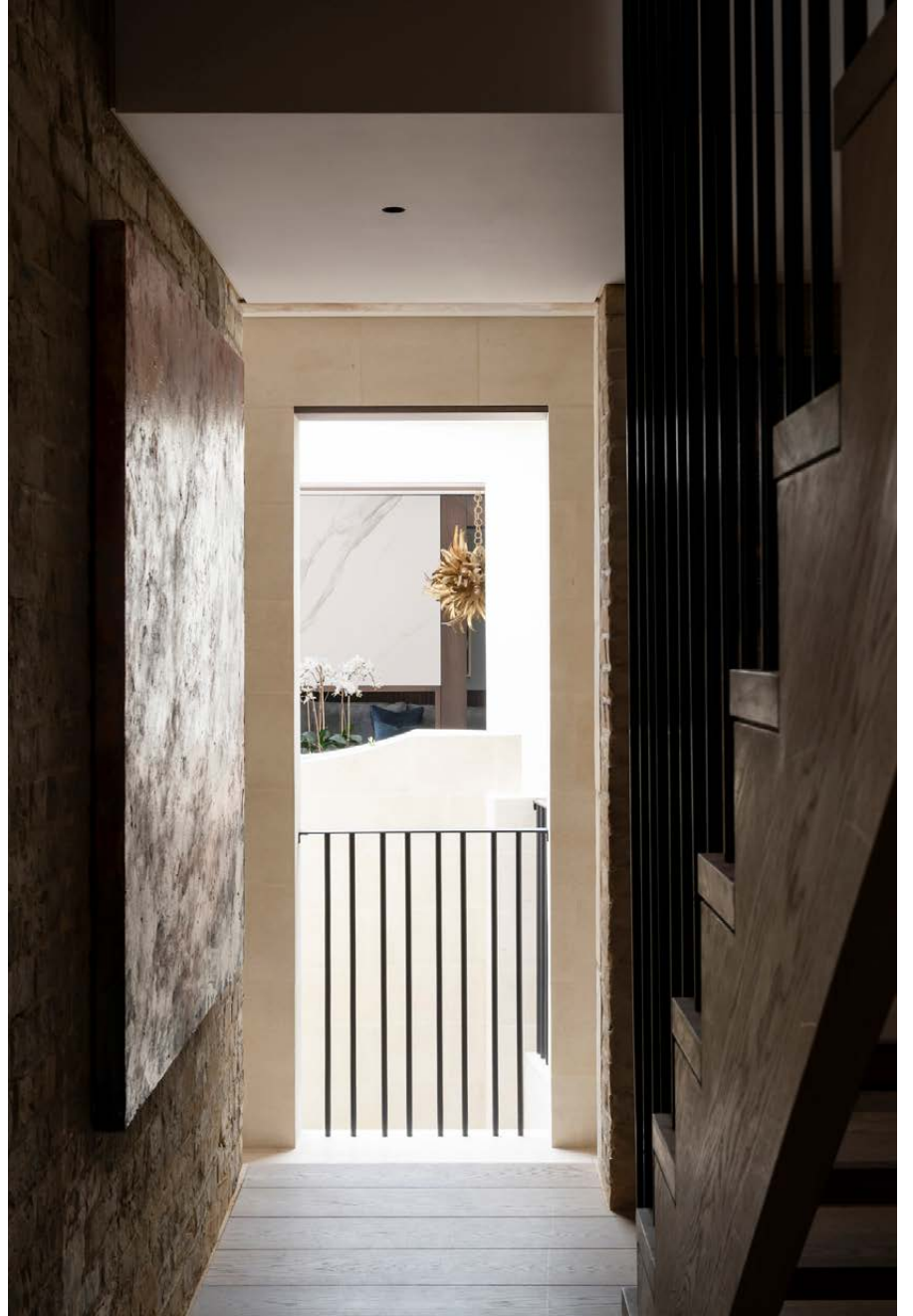










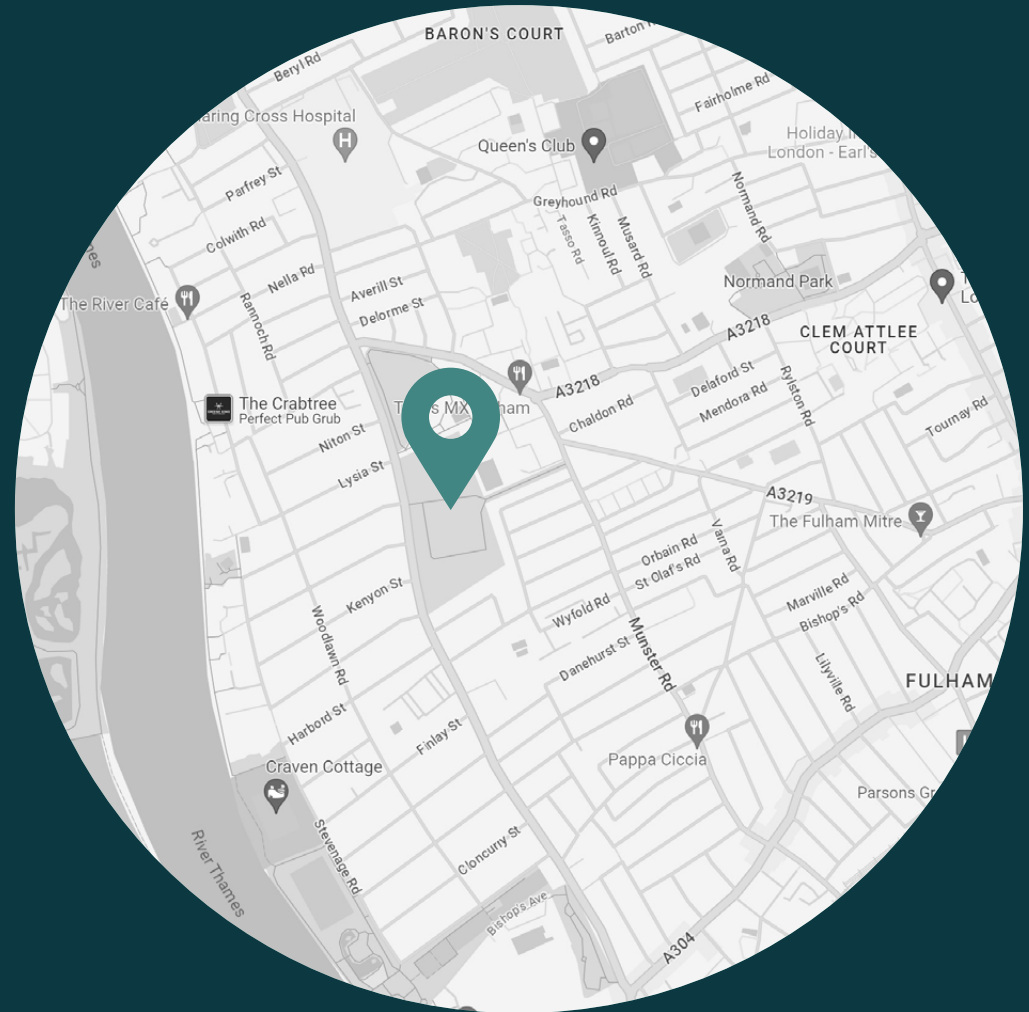




LOCATION

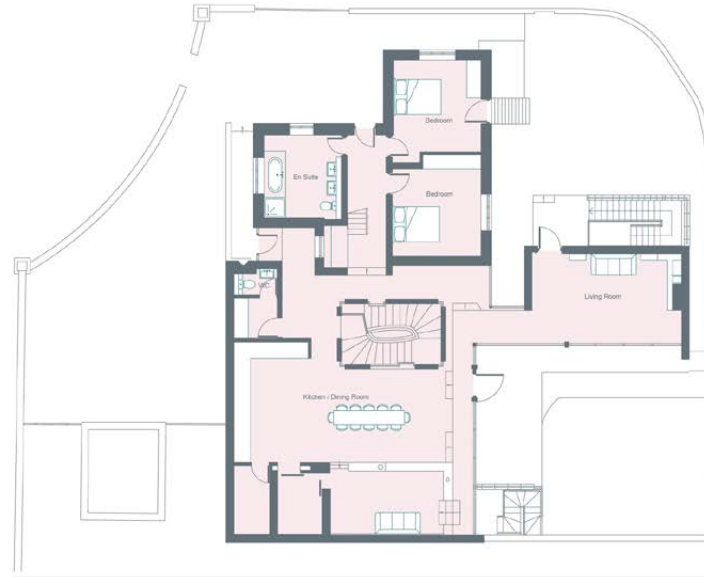
This unique home is remarkably private yet moments from some of London's best restaurants and boutiques.

Start your day with sweet treats from Little Sourdough Kitchen then caffeinate at Carbon Kopi. The Thames Path is a 10-minute walk away. Or, for retail therapy, head to boutiques Image London or Kyra Loves. Further afield, The White Horse in Parson's Green is a favoured local watering hole. Closer to home, Ruth Rogers' Michelin-starred Italian restaurant The River Café is within a 10-minute walk.



PROPERTY HIGHLIGHTS

- Award-winning, architect-designed home
- Open-plan kitchen and dining room
- Two reception rooms
- Principal bedroom suite with AC and dressing area
- Four further bedrooms
- Four further bathrooms
- Games room
- Swimming pool with shower room and sauna
- Two cloakrooms and walk-in closet
- Two gardens



Ground Floor



First Floor



Lower Ground Floor



Please don't hesitate to get in touch if you have any questions or require any further information.

hello@domusstay.com

+44 (0)20 8168 8880

Domus Stay provides the perfect combination of property, place and personal service for the world's most remarkable people. If you have any questions, or if we can help in any way, please contact us on the above number. Be it about a property you have, a property you want, dates to check or any special requirements you may need, we'd love a chat.

