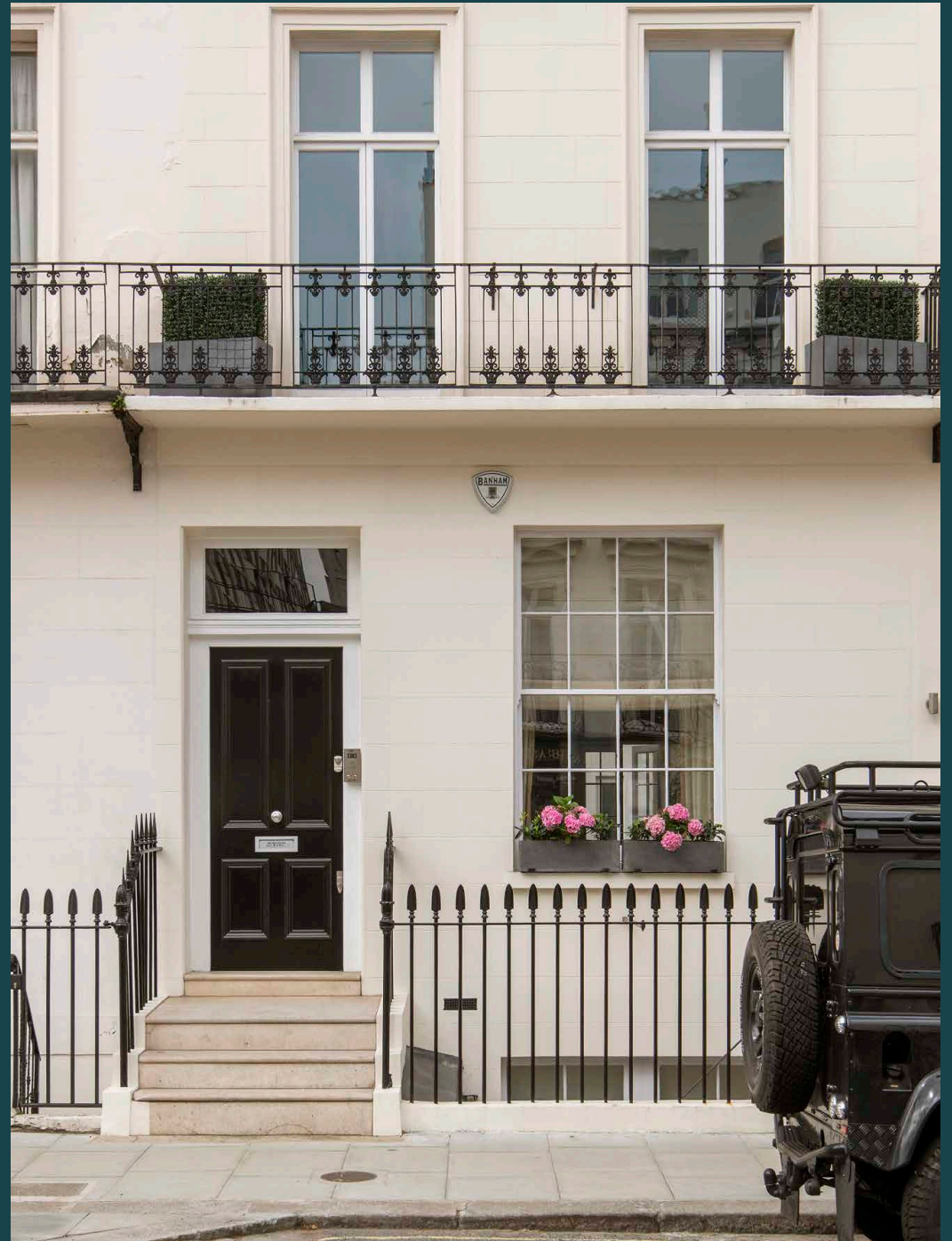


domus
stay.

Ebury Street

Belgravia SW1W

3 Bedrooms, 2 Bathrooms
For 5 guests





**A mirror of its Belgravia location,
this flawless three-bedroom duplex
apartment is a gallery of bespoke finishes
and creative finesse.**

Set within a quintessential stucco-fronted townhouse, this Ebury Street apartment harmonises with its refined surroundings.

Behind a stone façade and cast-iron railings, find a newly refurbished space envisaged by a leading light in interior design.

No detail has been overlooked, with all furniture and fixtures custom-made to fit the backdrop.

The double reception room has been conceived for entertaining. Mix a drink at the bar, ignite the Chesneys gas fire and settle into the gentle curve of the artisanal cream sofa. Ambient lighting sets a welcoming tone; cabinets are softly backlit to cast a warm glow and track lights illuminate artwork and objects.

There's a timelessness to the design, which pairs classic coving and wainscoting with contemporary interventions. Herringbone floors flow throughout, creating a sense of uniformity, while gold accents add a touch of decadence – from the intricate stitching on the Beaumont and Fletcher curtains to the filigree-style Porto Romana pendant light.





Tucked away at the other end of the room, a study area with a desk is an ideal spot to catch up on some work, overlooking the patio garden.

“

Entertaining comes easy in the double reception room, featuring a back-lit bar, generous curved sofa and access to the patio garden.

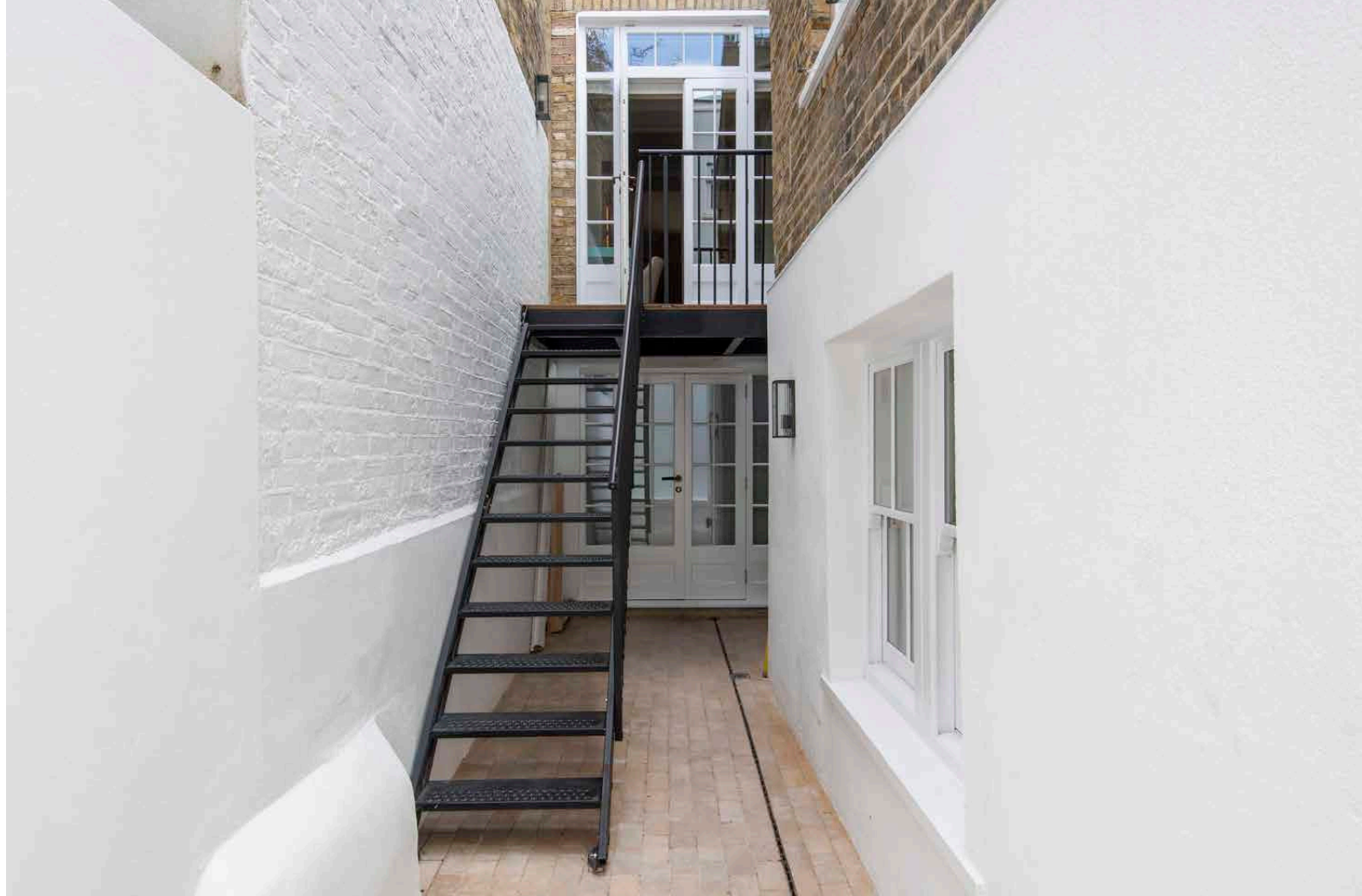






Taupe-coloured cabinets and lightly veined marble bring elegance, while Smeg appliances and a chef-grade cooker ensure all practical necessities are taken care of.





On this floor, you'll also find the first of three considered bedrooms. A quiet, streamlined space, Poliform fitted wardrobes keep clutter at bay. It's served by an opulent bathroom with a spa-like finish – think brass fixtures against white stone. Pull back the frosted glass screen to step into a concealed bathtub.

Two further bedrooms are found towards the back of the apartment. Both benefit from an abundance of natural light and access to the patio garden. Inviting and tranquil, expect neutral tones, fitted wardrobes and sink-into beds. A luxurious shower room is also found on this floor, finished with striking brass fixtures.







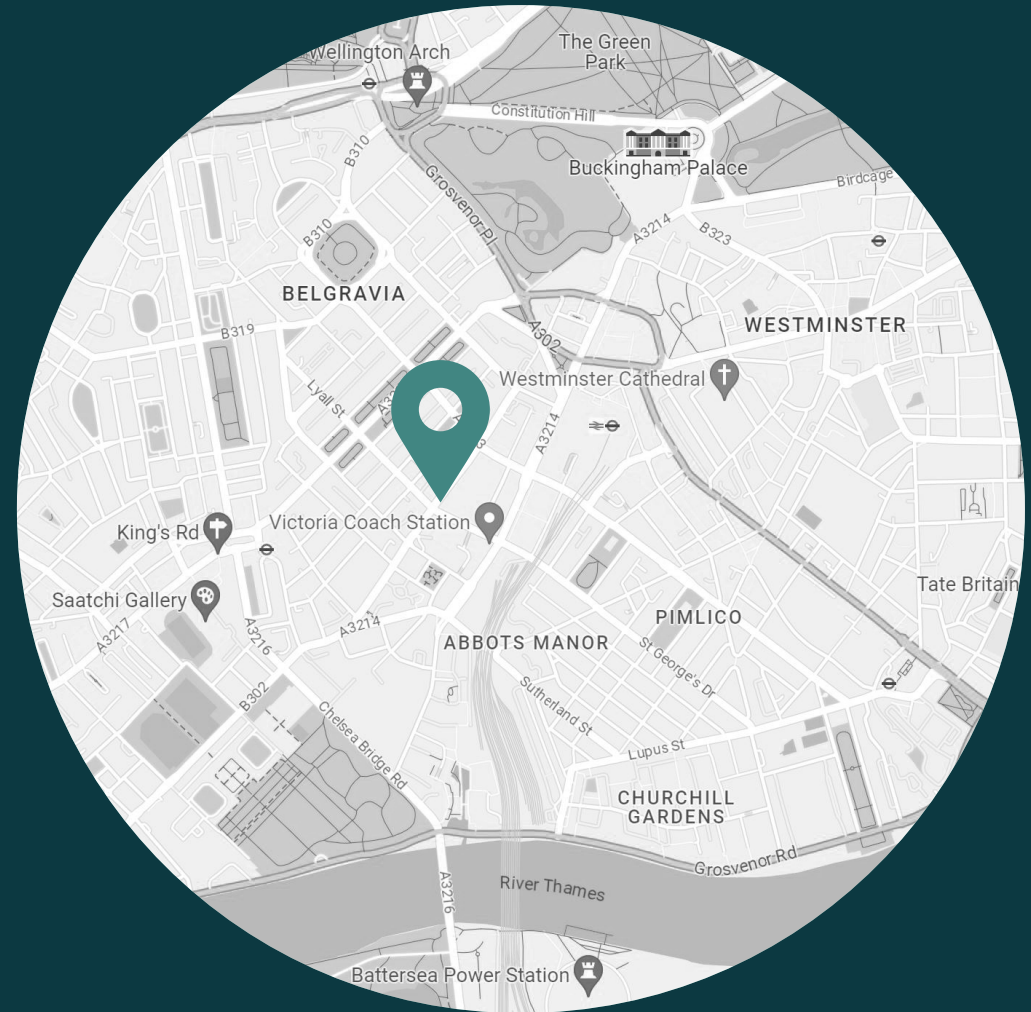




LOCATION

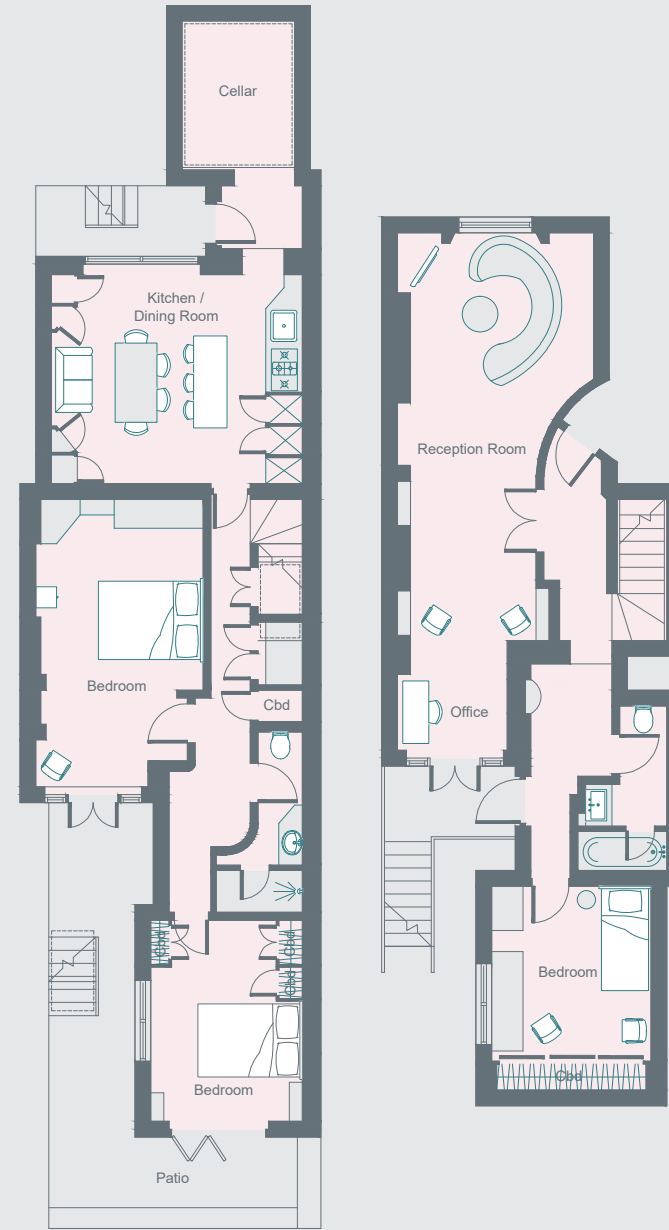
Sat between neighbourhood-focused Belgravia and creative Chelsea, live like a local at Ebury Street.

Mornings here are best started with a coffee from Tomtom and a stroll down Elizabeth Street, stopping to pick up a loaf at Chestnut Bakery or groceries at Bayley & Sage. For a spot of retail therapy, head in the direction of the King's Road, enjoying an art-filled interlude at Saatchi Gallery en route. Music aficionado? Book a table at Boisdale for whiskey, cigars and live bands. Come evening, there are no shortage of fine dining options on the doorstep. Choose between French classics at La Poule au Pot, Chinese small plates at Hunan or the seasonal tasting menu at Claude Bosi at Bibendum.



PROPERTY HIGHLIGHTS

- Double reception room finished with bespoke furniture
- Contemporary kitchen featuring chef-grade appliances
- Three bedrooms with Poliform storage
- Two bathrooms
- Patio garden
- City of Westminster



Lower Ground Floor

Ground Floor



Please don't hesitate to get in touch if you have any questions or require any further information.

hello@domusstay.com

+44 (0)20 8168 8880

Domus Stay provides the perfect combination of property, place and personal service for the world's most remarkable people. If you have any questions, or if we can help in any way, please contact us on the above number. Be it about a property you have, a property you want, dates to check or any special requirements you may need, we'd love a chat.

