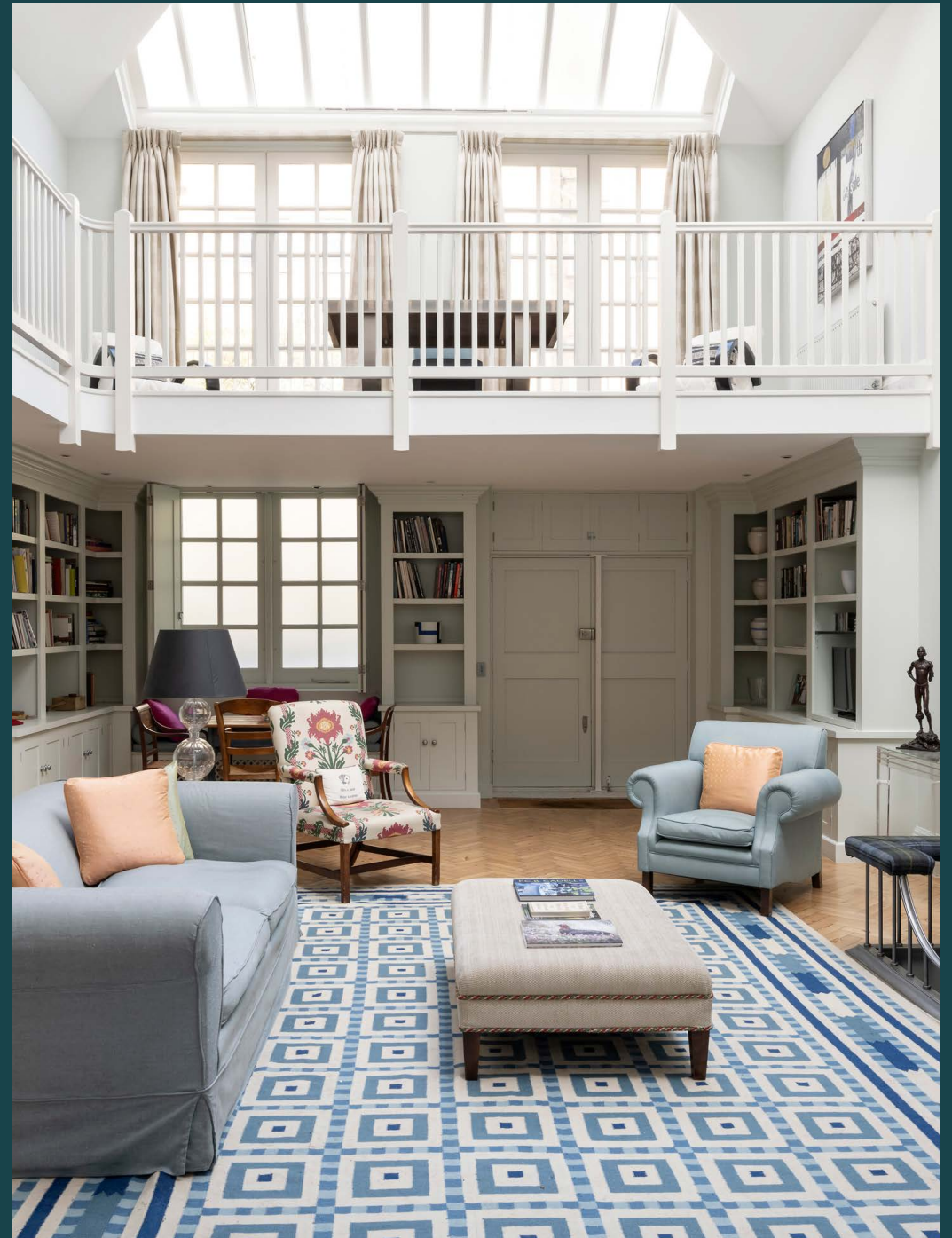


domus
stay.

Avenue Studios

Chelsea SW3

2 Bedrooms, 2 Bathrooms
For 4 guests





An immaculate take on a renovated artist's studio, this two-bedroom contemporary haven in Chelsea comes with a captivating history.

A loft-style haven with a contemporary twist, Avenue Studios boasts an impressive sense of history. Allegedly once serving as King Henry VIII's stables, the space was a creative sanctuary in the mid-19th century for Queen Victoria's sculptor, before later transforming into workspaces for numerous notable artists.

Now, this immaculately reimagined artist's studio plays host to inspiring design-led interiors. Smooth tiles pave the way through to the social heart of the home – an immense double-height room with a lofty vaulted ceiling. A mezzanine level encircles the space, allowing light to cascade across a central lounge. A space to press pause, an array of armchairs makes for a peaceful spot to admire the feature fireplace. Envisaged for effortless entertaining, an L-shaped open-plan kitchen melds seamlessly into the space. Cook up a storm then enjoy informal dinners across the bench-style dining table. Leisurely breakfasts are best from the cosy window-nook opposite.



There's an effortless flow to the open-plan living space, with a sleek kitchen that seamlessly flows into the dining and lounge areas beyond.



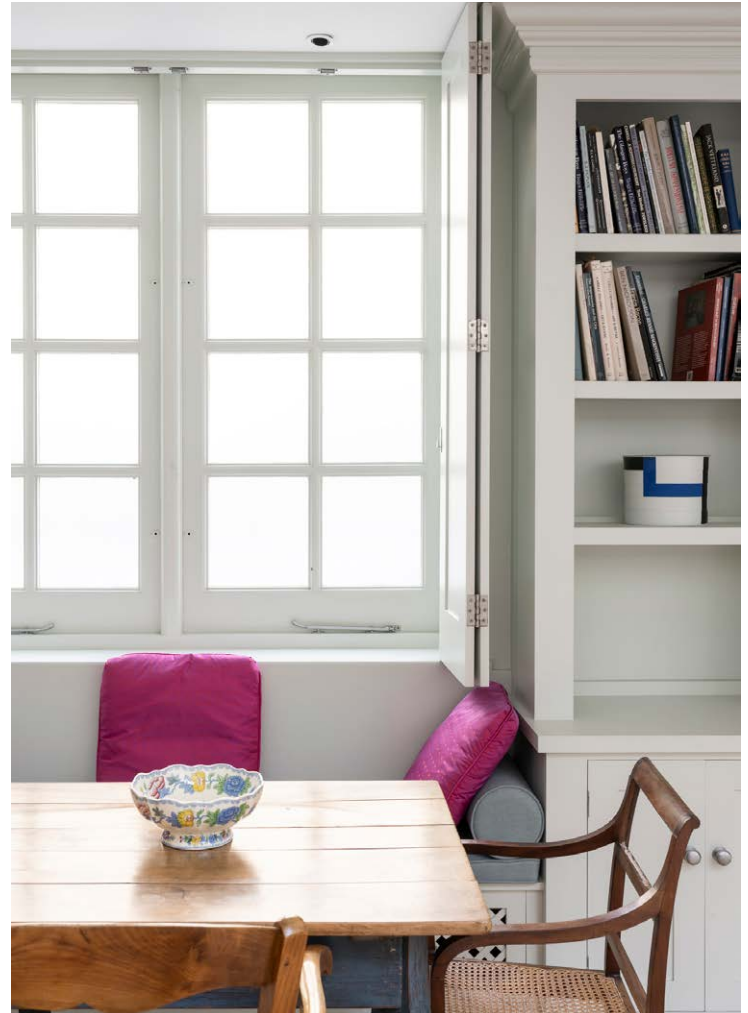
“

Reams of light create an open-plan living space that instantly uplifts.











Upstairs, the principal bedroom benefits from an airy mezzanine level of its own. Calming lilac carpet sweeps through the C-shape space, considerably divided into areas for sleeping and lounging. Illuminated by an abundance of natural light, two floor-to-ceiling windows cast light across a versatile space for curling up with a book or catching up on work. Refresh in the generous family bathroom, complete with smooth stone finishes and a large bathtub.

On the ground floor, a calming tone carries through an enchanting guest bedroom. Soft natural light filters through artfully placed skylights above, completing the peaceful ambiance. Serving this bedroom is a contemporary shower room in a beige plaster finish.







LOCATION

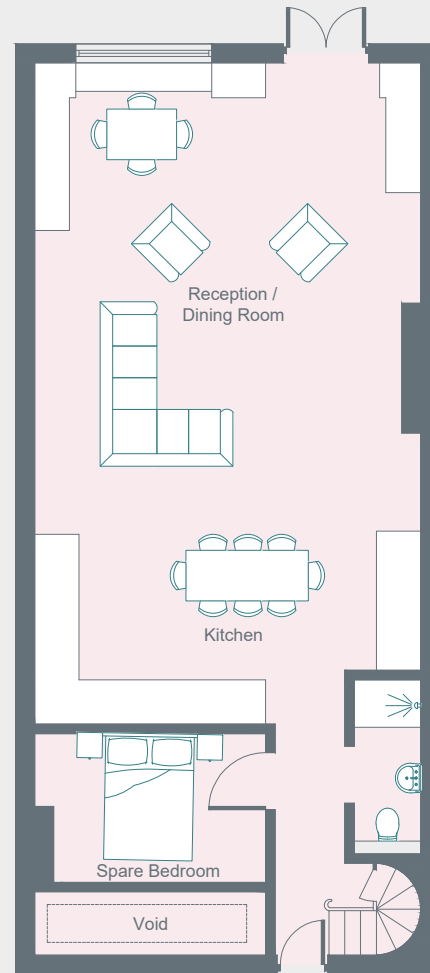
Just a stone's throw from Fulham Road, Avenue Studios is an ideal base for exploring Chelsea and beyond.

Conveniently situated between South Kensington and Chelsea, there's a best of both worlds feel here. Wander down to King's Road for boutique shopping and up-market eating, grabbing a coffee to go and pastry from Gail's. Stop in at Bluebird for fine food and crafted cocktails with an easy ambience. Up towards South Kensington, The Natural History Museum and the V&A are just over ten minutes' walk away. Complete the day with dinner at Zheng.

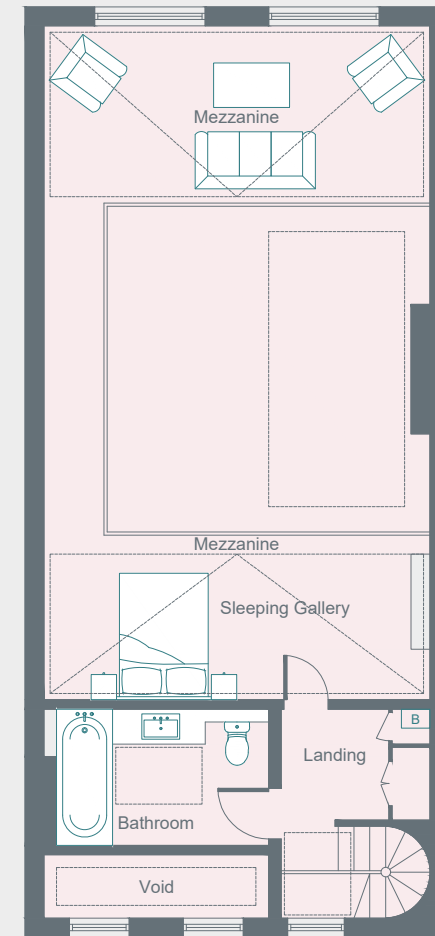


PROPERTY HIGHLIGHTS

- Open-plan kitchen, dining and reception room
- Mezzanine level principal bedroom
- Guest bedroom
- Family bathroom
- Shower room
- London Borough of Chelsea



Ground Floor



First Floor



Please don't hesitate to get in touch if you have any questions or require any further information.

hello@domusstay.com

+44 (0)20 8168 8880

Domus Stay provides the perfect combination of property, place and personal service for the world's most remarkable people. If you have any questions, or if we can help in any way, please contact us on the above number. Be it about a property you have, a property you want, dates to check or any special requirements you may need, we'd love a chat.

