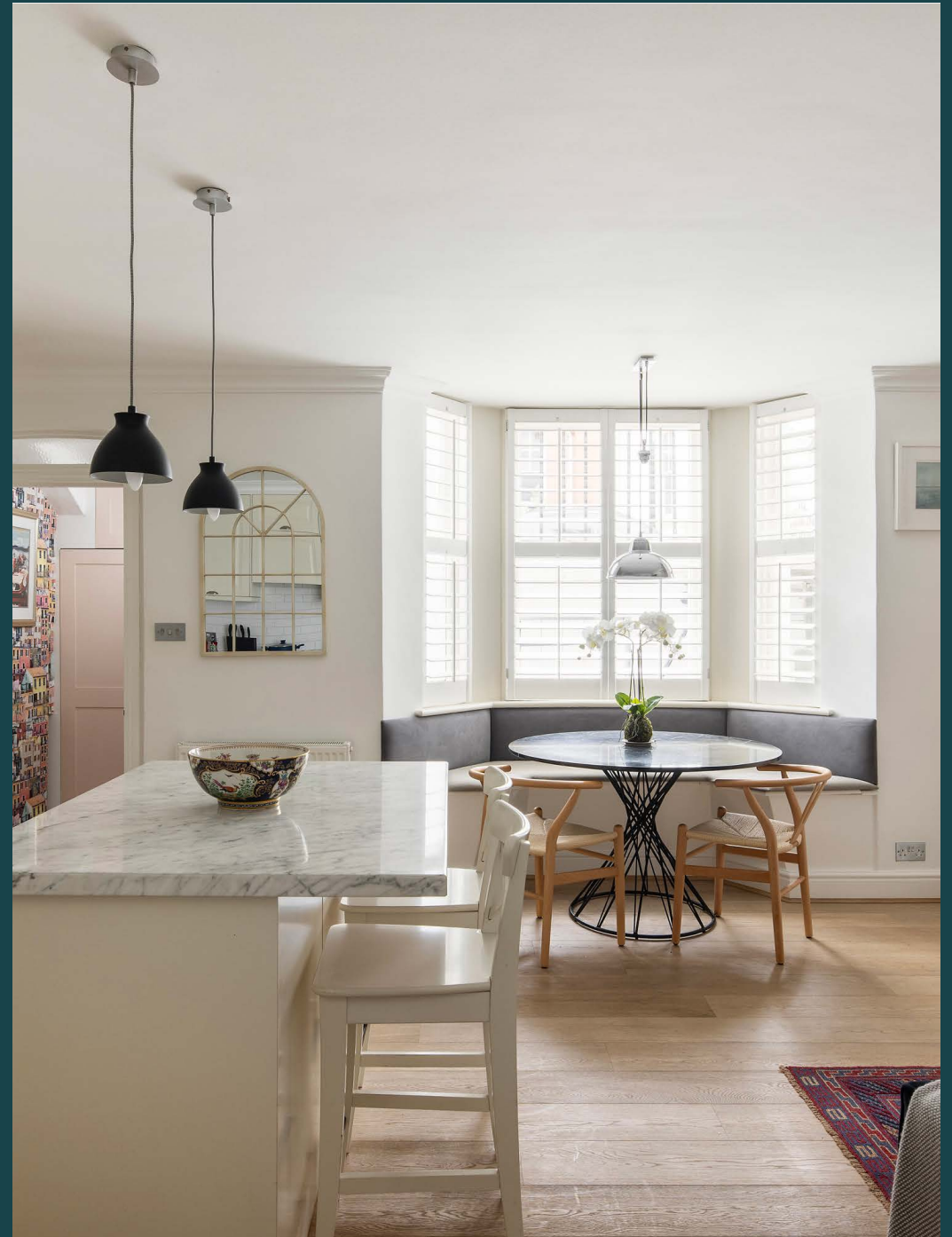


domus
stay.

Callow Street

Chelsea SW3

2 Bedrooms, 2 Bathrooms
For 4 guests



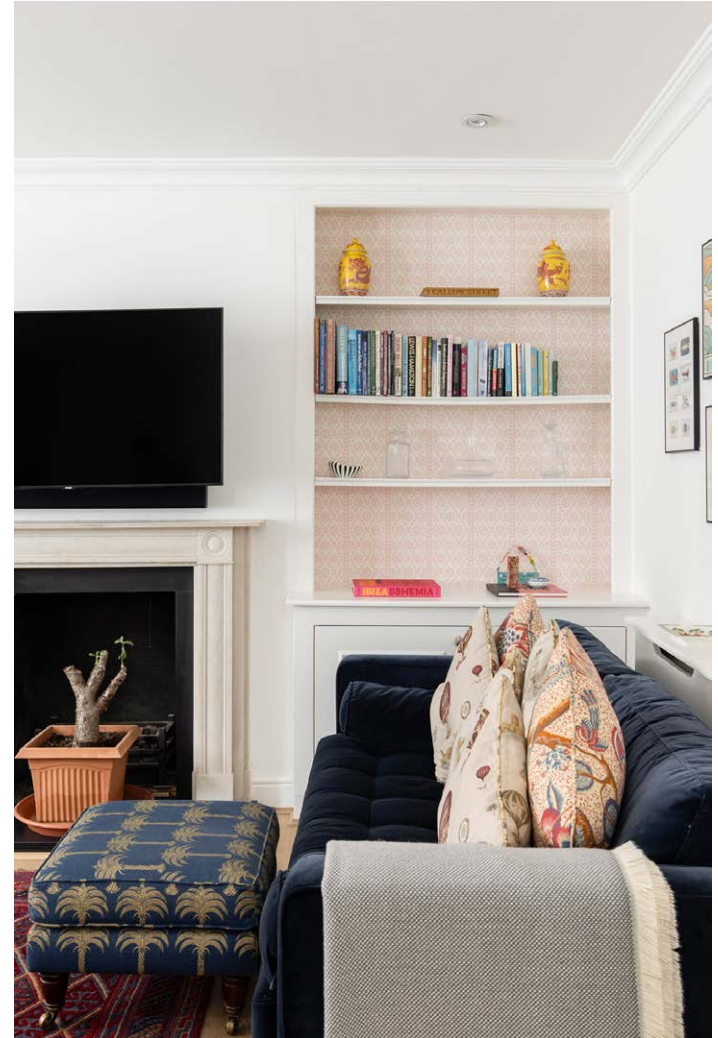


Beyond a row of red-brick façades, contemporary interiors and playful design bring an uplifting feel to this two-bedroom apartment in Chelsea.

From the entrance itself, there's a playful feel to Callow Street. Osborne & Little Portovenere wallpaper creates a warm welcome, featuring vibrant palm trees and painted houses. Through a glass panelled door, the open-plan kitchen and reception room showcases a natural flow between spaces for cooking, dining and lounging.

Cream coloured cabinetry forms an L-shaped kitchen – integrated appliances and open shelving creating a sleek feel. Matte black pendant lights subtly define the space, casting a soft glow over a light grey marble island.

Flooding the room in natural light, a bay window is the backdrop for banquette seating – a bright space to dine or linger on slow mornings. The opposite area forms a relaxed place to lounge. Sink into the inky blue velvet sofa, its tone mimicked in the minimalist artwork overhead. Flanking an elegant feature fireplace, pops of pink add a tasteful touch of colour to recessed shelving.





“

Wood floors lead the way to an airy bedroom, striped candy-coloured wallpaper enhancing the sense of space.



Wood floors lead the way to an airy bedroom, striped candy-coloured wallpaper enhancing the sense of space. Thoughtfully designed floor-to-ceiling integrated wardrobes sit to either side of the room. Laze over the expansive black bed, making the most of a widescreen TV, or draw back curtains and step out to an enclosed private patio. Serving this bedroom, a spacious family bathroom washed in light cream tones is complete with a bathtub.

At the rear of the home – an additional bedroom with an equally calming presence. White shutters reveal two generous sash windows, casting light across built-in wardrobes. Adorning the walls, curated art lends a sophisticated feel. Soothing hues continue in the en suite bathroom, featuring a generous walk-in shower.









LOCATION

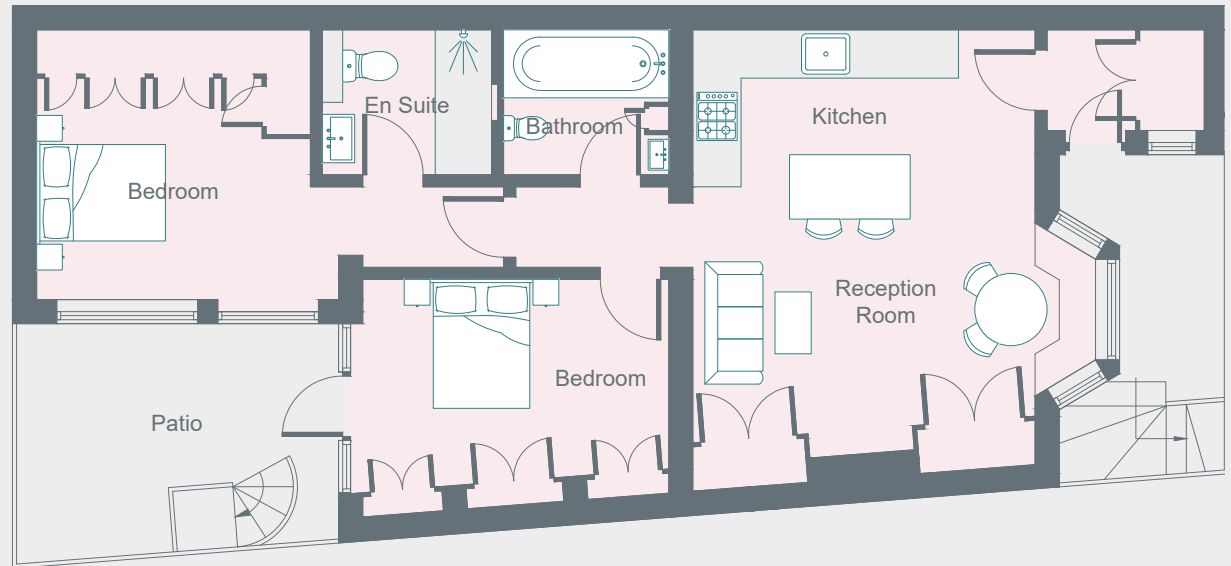
Positioned between sophisticated South Kensington and vibrant Chelsea - enjoy the best of both worlds at Callow Street.

Pick up coffee from Gail's Bakery, then work up a sweat at Triyoga. Wander the boutiques on The King's Road or stop in at the Saatchi Gallery to peruse the contemporary art collection. For sushi lovers, head to Sticks'n'Sushi or Benihana. Complete your day with a walk around Chelsea Physic Garden, then dinner at Bluebird.



PROPERTY HIGHLIGHTS

- Open-plan kitchen and reception room
- Principal bedroom suite
- Guest bedroom
- Family bathroom
- Patio
- Royal Borough of Kensington & Chelsea



Lower Ground Floor

Approximate Area = 65.9 sq m / 709 sq ft
Drawn for Illustration Purposes Only
fourwalls-group.com 59184





Please don't hesitate to get in touch if you have any questions or require any further information.

hello@domusstay.com

+44 (0)20 8168 8880

Domus Stay provides the perfect combination of property, place and personal service for the world's most remarkable people. If you have any questions, or if we can help in any way, please contact us on the above number. Be it about a property you have, a property you want, dates to check or any special requirements you may need, we'd love a chat.

