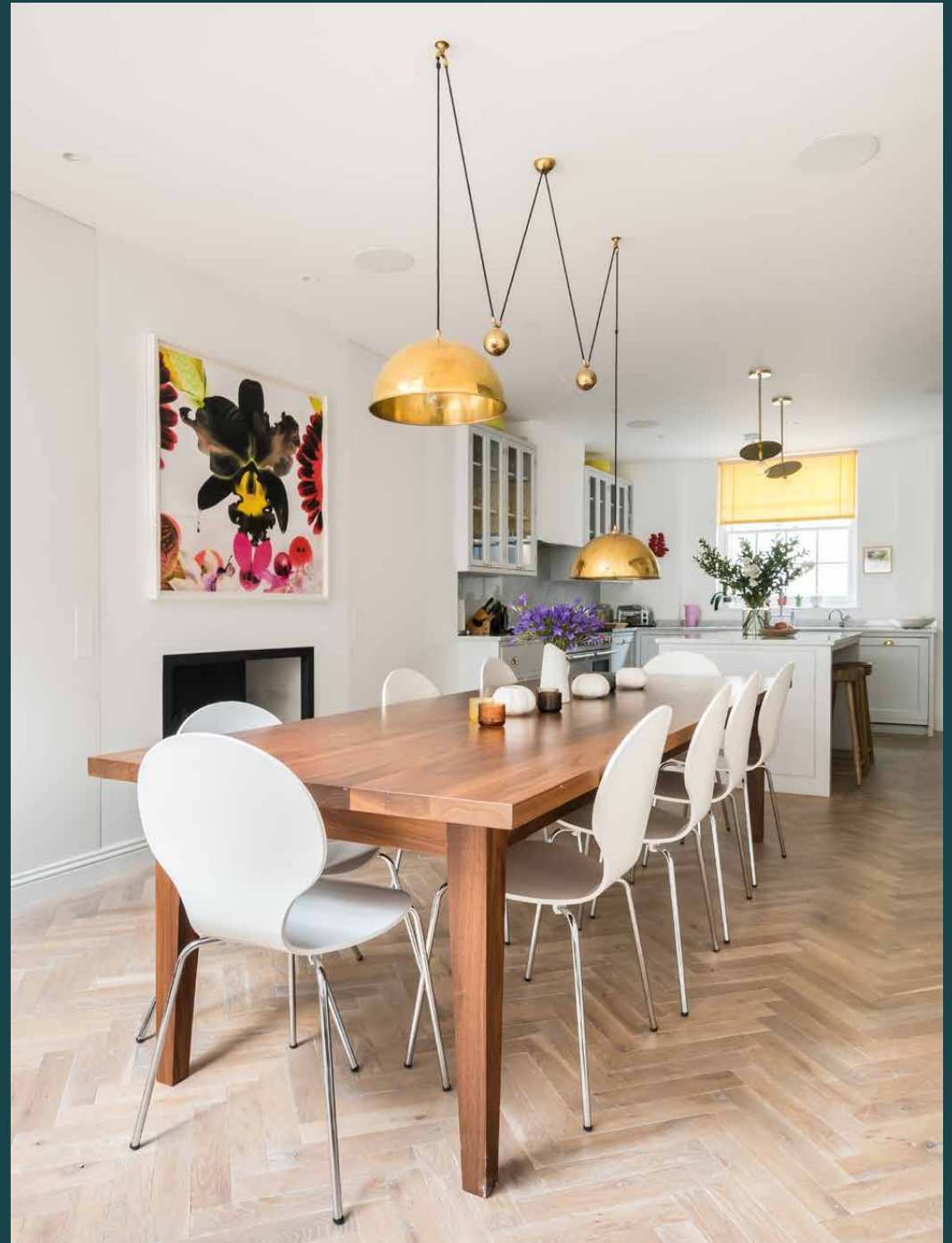
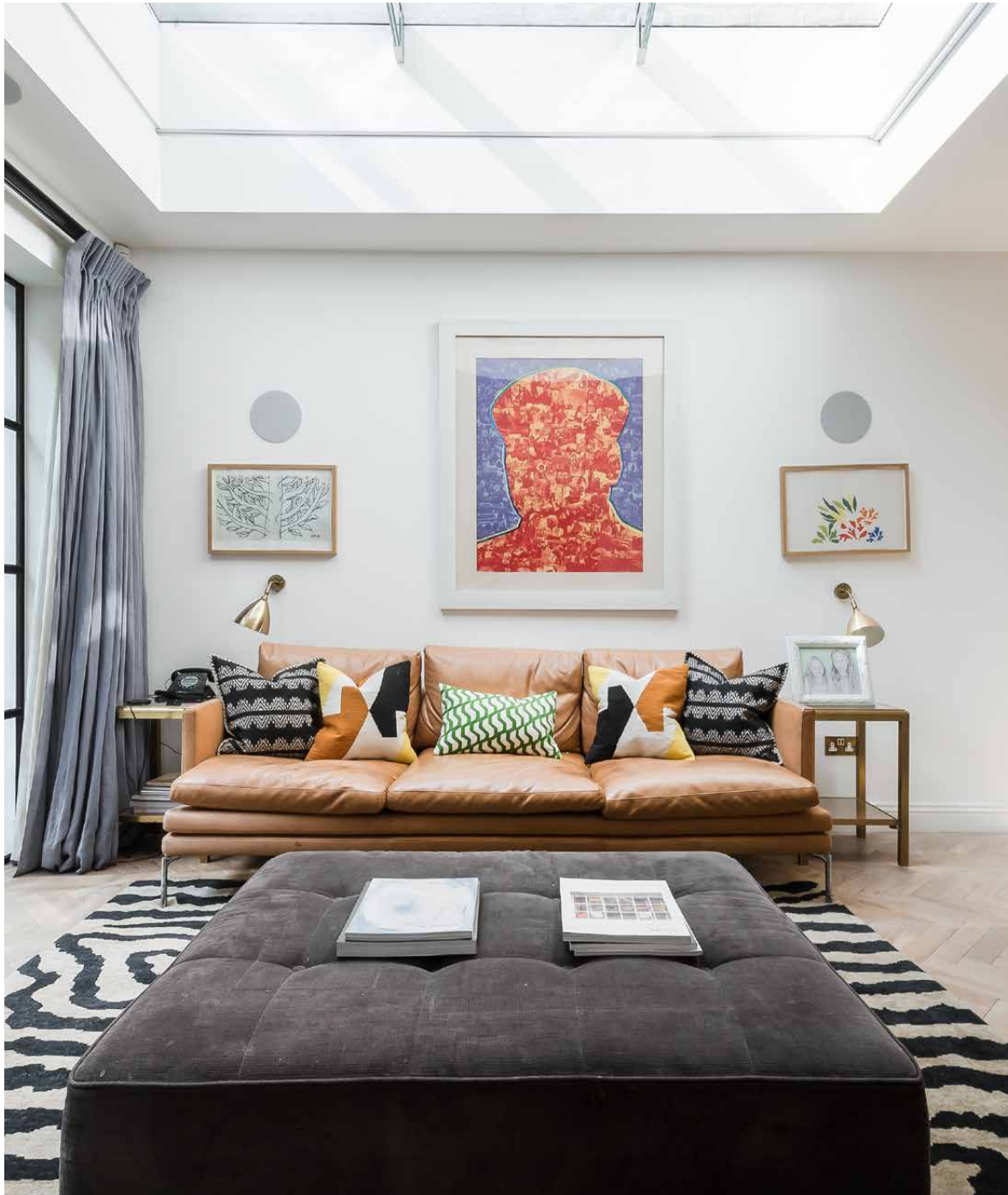

Northumberland Place

Notting Hill W2

4 Bedrooms, 4 Bathrooms
For 8 guests



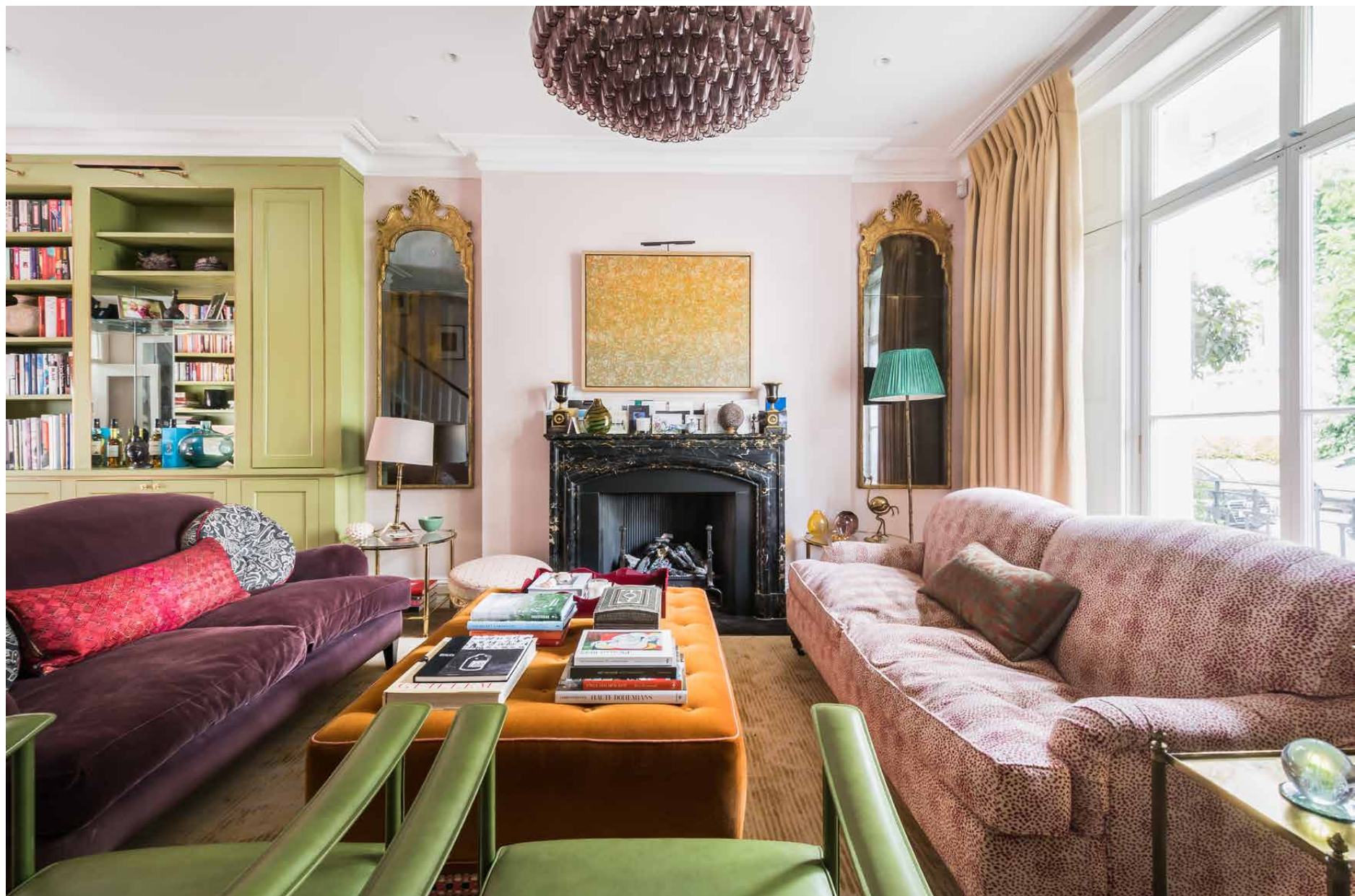


Five floors united by considered design and a timeless aesthetic. Great for gathering around sunset barbecues.

Wander down the historic street of Northumberland Road and you'll find classic townhouses, rows of blossoming trees and a wonderful community spirit. The sense of peace resonates as you step into this laid-back home, where timeless design is elevated by modern functionality. And fireplaces that add a warm welcome.

Enter on the raised ground floor, where soothing mauves and earthy greens invite you to settle into the sofas. Put your feet up on the marigold footstool. Dual aspect windows and blank canvas walls that make classical furnishings pop. It's a space designed for disconnecting and reconnecting – getting lost in a page-turner or for spending time with family as the sun makes its curtain call. Remote workers take note, the study will make logged-in hours fly.





The lower-ground floor is where daily life plays out, between the high-spec kitchen, the stylish lounge and the patio garden beyond – effortless entertaining.



“

It's the kind of home where families can both gather and enjoy moments of privacy.







The upper floors are given over to bedrooms and bathrooms. On the first, the feel-good master suite takes it up a notch; Pantone-approved silver-greys and lemon yellows, floor-to-ceiling windows that channel light and the quietness of the surrounding street, a serene atmosphere that makes waking up a pleasure – a feeling that is echoed in the suave en suite. The naturally bright dressing room is both fuss-free and sophisticated.

Three further bedrooms take over the second and third storeys – two share a family bathroom with a bath and dual vanity, the other sits on the third floor with access to a separate bathroom and a balcony. From here, the west London views are uninterrupted.











LOCATION

You might be between Notting Hill's most vibrant addresses, but there's an away-from-it-all feel to this street.

Close to Westbourne Grove, Portobello Road and Ledbury Road, Northumberland Place is the ideal spot for adventures around Notting Hill. Mornings spent rubbing elbows at market stalls, a biodynamic lunch at Ottolenghi's, late afternoons at the Electric Cinema. Tuck into locally sourced, seasonal plates at Caractère. The independent boutiques that line Westbourne Grove are always worth exploring. Reach Diptyque or L'Estrange 5. Meet your personal trainer at Bodyism in under 10. Need a break? Hyde Park is less than 30 minutes away.

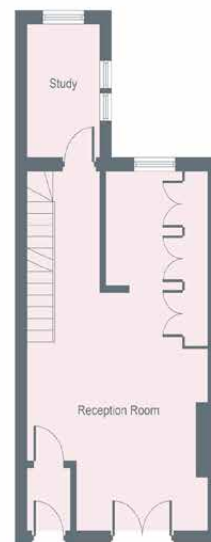


PROPERTY HIGHLIGHTS

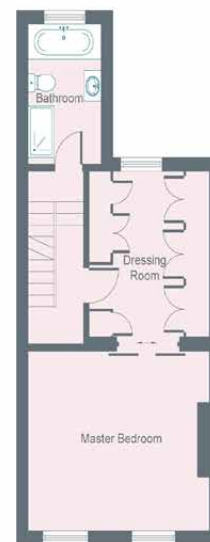
- Light-filled reception room
- Open-plan kitchen and dining room
- Principal bedroom with dressing room
- Three bathrooms
- Two further bathrooms
- One washroom
- Home office
- Utility room
- Patio garden
- Balcony
- City of Westminster



Lower Ground Floor



Raised Ground Floor



First Floor



Second Floor



Third Floor

Approximate Area = 216.4 sq m / 2329 sq ft

Surveyed and drawn in accordance with the International Property Measurement Standards (IPMS 2: Residential)
fourwalls-group.com 779564





Please don't hesitate to get in touch
if you have any questions or require
any further information.

hello@domusstay.com

+44 (0)20 8168 8880

Domus Stay provides the perfect combination of property, place and personal service for the world's most remarkable people. If you have any questions, or if we can help in any way, please contact us on the above number. Be it about a property you have, a property you want, dates to check or any special requirements you may need, we'd love a chat.

