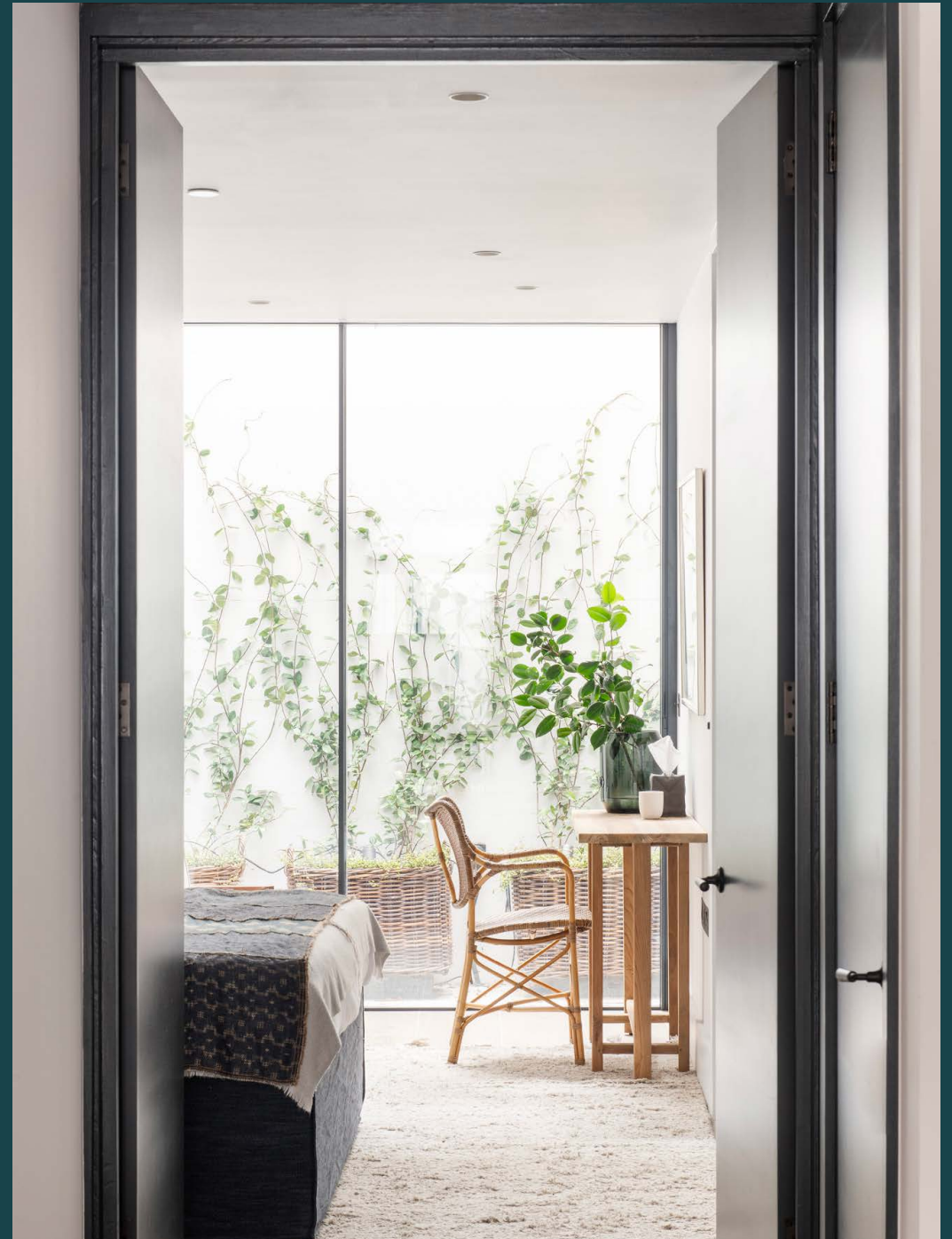


domus
stay.

The Pavilion

Notting Hill W2

2 Bedrooms, 2 Bathrooms
For 4 guests





Directly opposite the green expanses of Kensington Gardens and Hyde Park, this bright two-bedroom apartment invites the outside in.

There's an overwhelming feeling of calm to this immaculate apartment. Tucked away discreetly on the lower-ground floor of a handsome period building, lightwells flood the inviting home with natural light, while maintaining a sense of complete privacy.

With its pared-back colour palette, pale wooden furniture and tactile Zellige tiles, there's a Scandinavian simplicity to the open-plan living space. To one side, an atmospheric lounging area, complete with a deep sofa and large-screen TV. To the other, a well-equipped kitchen with a six-seater dining table. Altogether, a considered backdrop for socialising and unwinding.



With its pared-back colour palette, pale wooden furniture and tactile Zellige tiles, there's a Scandinavian simplicity to the open-plan living space.



“

Lightwells infuse the space with natural light, while hushed tones continue the calming feel.



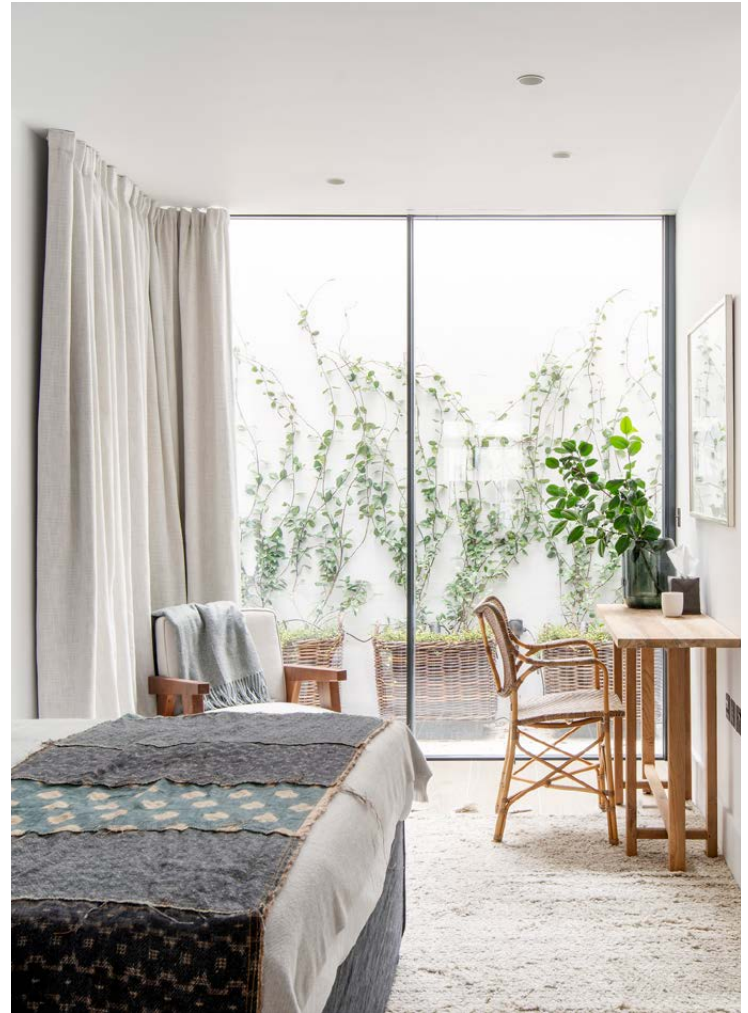


Both bedrooms are finished in the same natural tones and textures. Floor-to-ceiling glazing frames views out to a small and secluded patio in the principal suite, inviting additional light inside. Every detail has been considered, from the plush soft furnishings to the convenient dressing table and fitted storage. There's a natural warmth to the en suite, where yet more floor-to-ceiling glazing casts rays on an atmospheric rainfall shower.

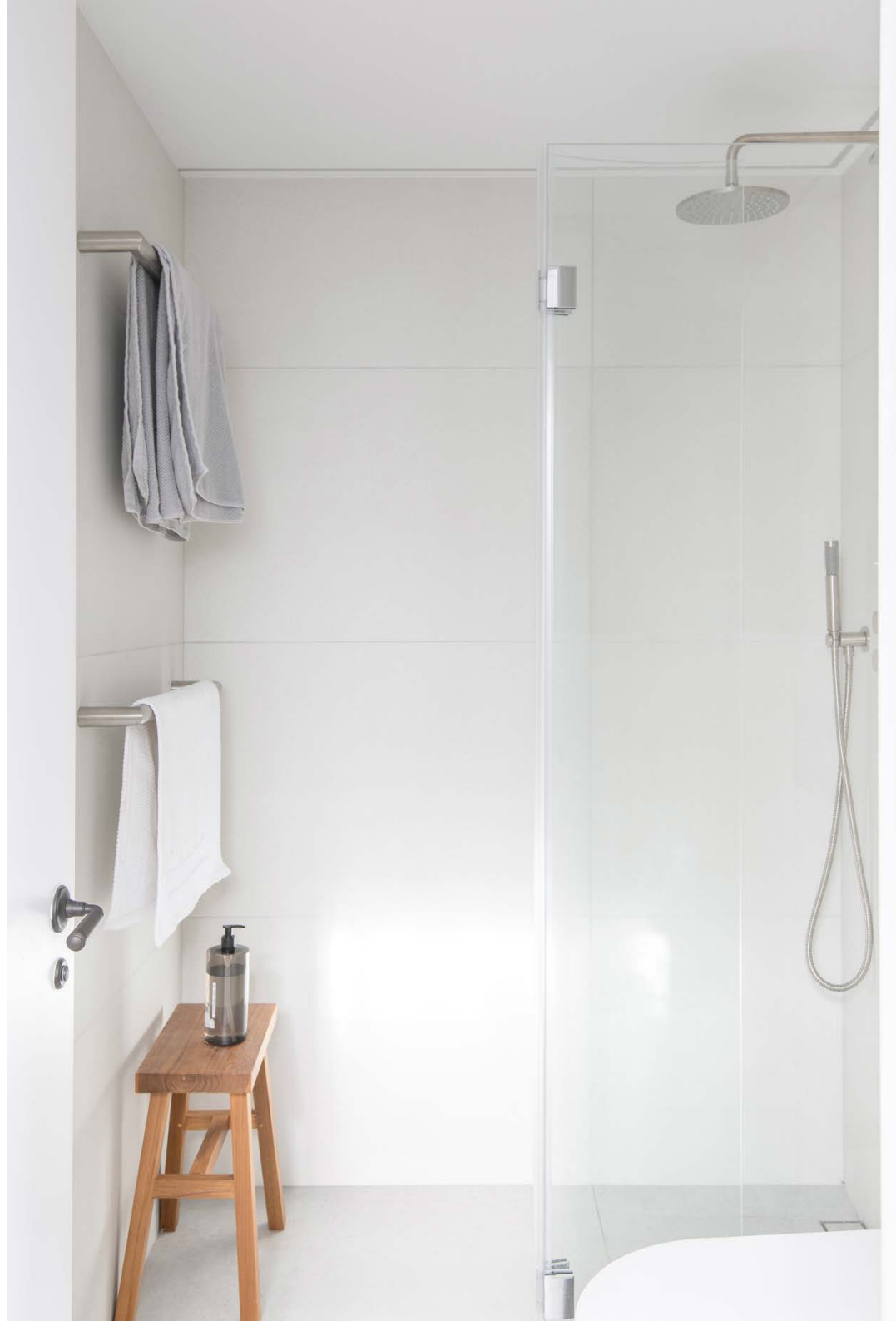
The second bedroom is located off the living area, a set of skylights neatly engineered into the ceiling illuminate its peaceful setting. Accessed via a set of stairs, its en suite comes complete with a walk-in shower.













LOCATION

With so much green space on the doorstep, take a breather from the relentless pace of city life here.

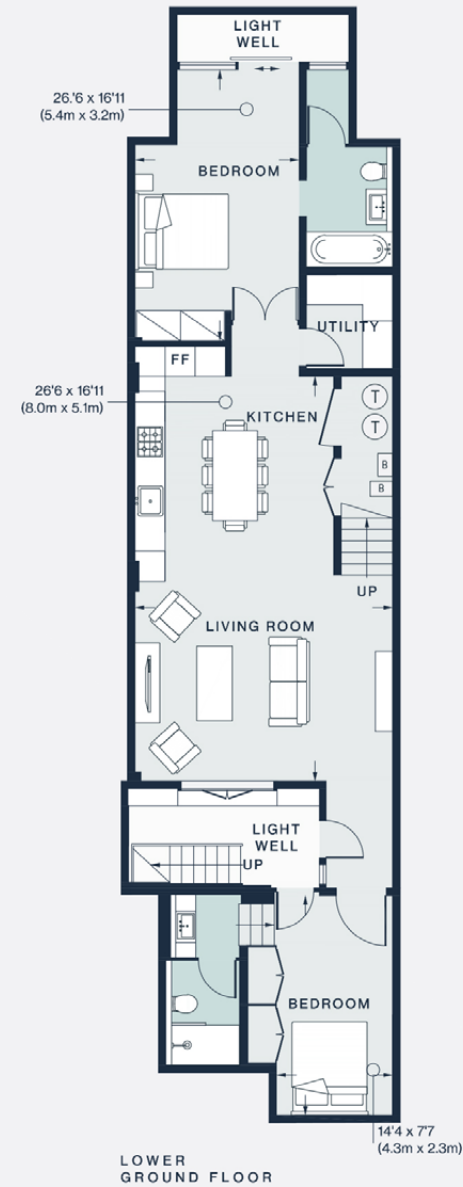
Take in the Albert Memorial in Kensington Gardens, stroll around the lake in Hyde Park or – if you're feeling brave – dive into the Serpentine Lido. Recharged and ready to go, the best of Bayswater and Notting Hill is within walking distance. Ease into the day with a flat white at Guillam Coffee House, a workout at Heartcore, or brunch at Farm Girl. Then continue along Portobello Road for a spot of vintage shopping. Come evening, head to Gold for a lively dinner or The Hillgate for a quiet drink at the pub.





PROPERTY HIGHLIGHTS

- Open-plan kitchen, dining and reception room
- Moments from Kensington Gardens and Hyde Park
- Bright and airy feel
- Principal bedroom suite with patio access
- Guest bedroom suite
- Parking available on request
- City of Westminster



Approx. Gross Internal Area = 985 sq ft / 91.5 sq m

Floor plans are for illustrative purposes only and not to scale. Compliant with RICS code of measuring practice.



Please don't hesitate to get in touch if you have any questions or require any further information.

hello@domusstay.com

+44 (0)20 8168 8880

Domus Stay provides the perfect combination of property, place and personal service for the world's most remarkable people. If you have any questions, or if we can help in any way, please contact us on the above number. Be it about a property you have, a property you want, dates to check or any special requirements you may need, we'd love a chat.

